



# SCHEFFER COMMUNITY CENTER

CAC MEETING

JANUARY 24, 2017 | JLG 16147 | © 2017 JLG ARCHITECTS

Saint Paul Parks and Recreation



DESIGN FOR LIFE



1" = 80'-0"

# SCHEFFER COMMUNITY CENTER

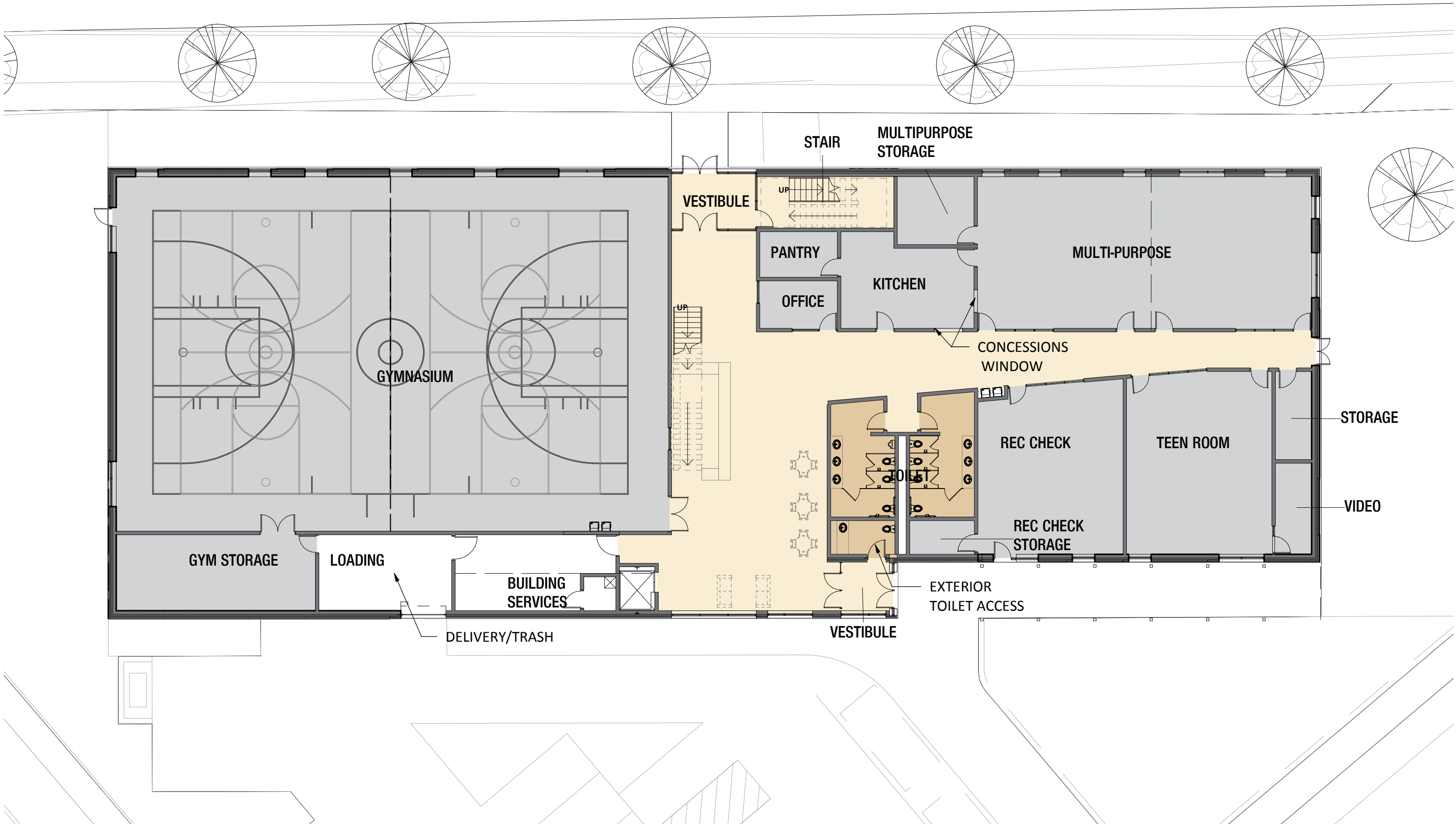
SITE PLAN  
 JANUARY 24, 2017 | JLG 16147 | © 2017 JLG ARCHITECTS

0 20 40 80

Saint Paul Parks and Recreation  
 DESIGN FOR LIFE



1" = 40'-0"

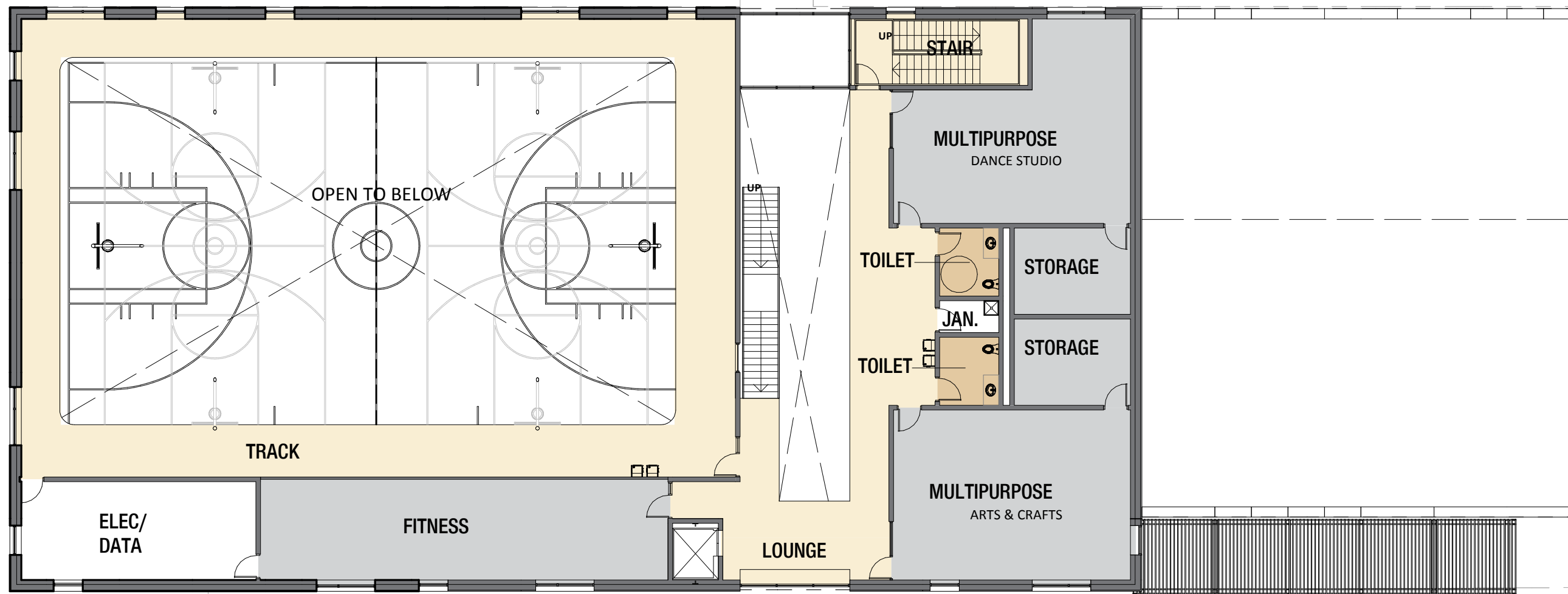


# SCHEFFER COMMUNITY CENTER

## FIRST FLOOR PLAN

01/23/17 | JLG 16147 | © 2017 JLG ARCHITECTS





# SCHEFFER COMMUNITY CENTER

## SECOND FLOOR PLAN

01/23/17 | JLG 16147 | © 2017 JLG ARCHITECTS





PERGOLA WOOD EXAMPLE



GLAZED BRICK CASE STUDY



GREEN GLAZED BRICK (COLOR TBD)



BLUE GLAZED BRICK (COLOR TBD)



GLAZED BRICK CASE STUDY



ENDICOTT DARK IRONSPOT EXAMPLE



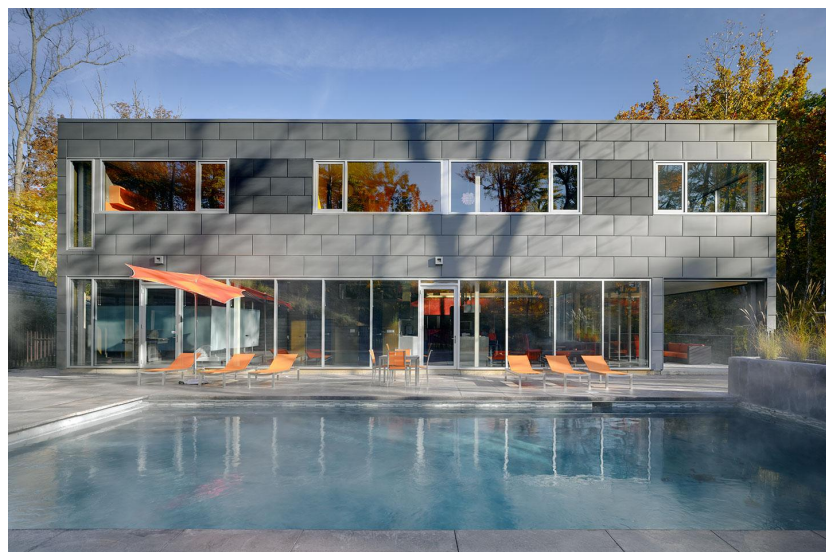
ENDICOTT DARK IRONSPOT EXAMPLE



DRI-DESIGN METAL PANEL EXAMPLE, COLOR TBD



ENDICOTT DARK IRONSPOT BRICK - MULTIPLE TEXTURES



DRI-DESIGN METAL PANEL 2 TONED EXAMPLE, COLOR TBD



DRI-DESIGN METAL PANEL EXAMPLE, COLOR TBD

# SCHEFFER MATERIALS

SCHEMATIC DESIGN

JANUARY 20, 2017 | JLG 16147 | © 2017 JLG ARCHITECTS



DESIGN FOR LIFE