

*Wadajir aan udisano xarun ciyareed oo caruurteena
anfici donta mustaqbalka*

*Baga nagayaan dhuftan
Walii wajjiin paarkii kana haa ijaarru*

Together let's get this park built

WELCOME

AGENDA

MEETING 2 (TODAY) - APRIL 25, 2018

Gordon Parks High School

1. Welcome and Introductions

2. Feedback to date and summary of park amenities (10 min)

- a) Review of amenity preferences collected to-date (Seema, Trust for Public Land)
- b) Parks design process and amenities nearby

3. Site functions (15 min)

- a) Review opportunities and constraints from meeting #1
- b) Ecological and Stormwater
- c) Social and Connectivity
- d) Maintenance and Safety

4. Scale comparisons (25 min)

- a) Similar sized parks in St. Paul, Minneapolis, and across the U.S.

5. What fits at Midway Peace Park? (30 - 40 min)

- a) Divide into groups. Using scale comparisons from other parks, and park amenities, combine them on a scaled site plan (20 min).
- b) Informal review of our group plans (10 min)

6. Wrap-up

- a) Next Steps and schedule
- b) Questions and evaluations



April 25, 2018 -- 2

FEEDBACK HEARD TO DATE

COMMUNITY ENGAGEMENT 2015-2017

- 525 Listening sessions
- 5 meetings and events (if not more)
- 6 park and community walks with 75 participants
- Two clean-up days - 2016, 2017

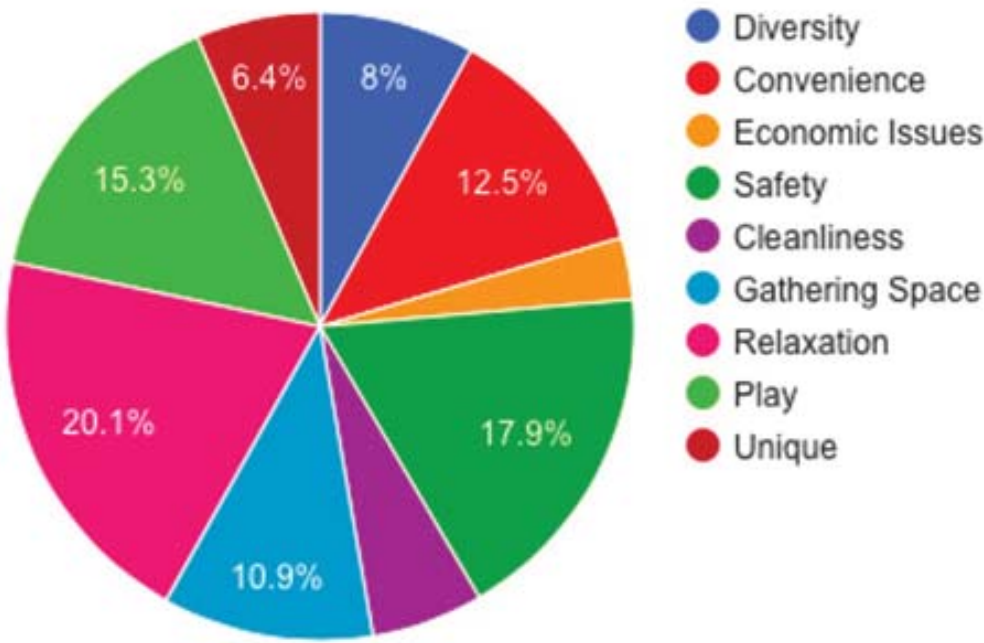
NAMING THE PARK

- Ballots at local schools, offices, apartments
- 512 ballots cast for park name
- Officially named through Parks Commission and City Council in March 2018

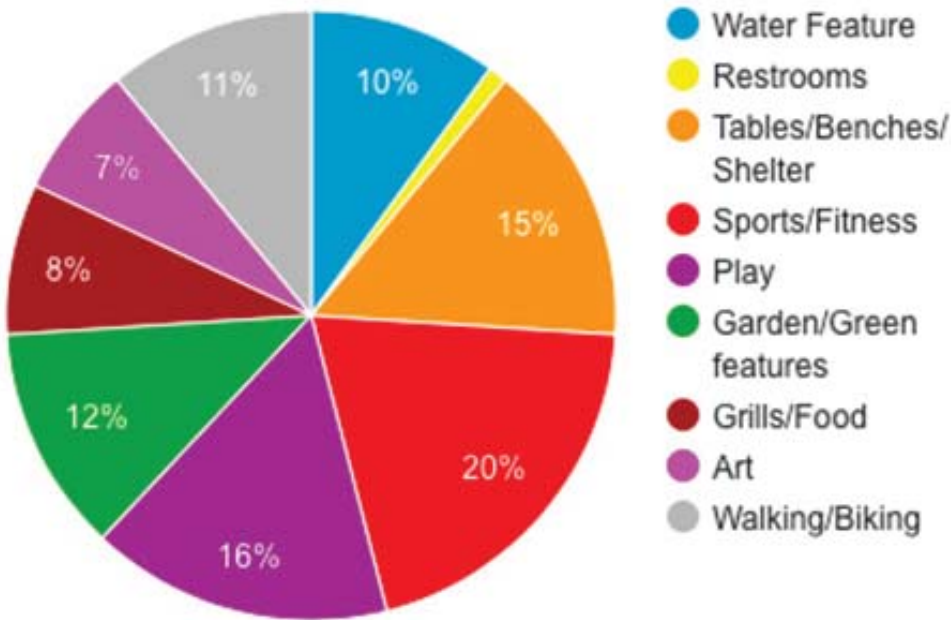
PARK AMENITIES - RANKED

- Open field
- Walking loop (can walk 30 minutes or more)
- Flexible play area
- Basketball hoop or half court
- Pavilions/Gathering area (for elders to sit and watch)
- Picnic table and BBQ
- Community garden
- Outdoor classroom / amphitheater
- Water feature

Values



Desired Park Amenities



FEEDBACK ON PARK ACTIVITIES



FEEDBACK HEARD TO DATE

PARK LISTENING IMPRESSIONS:

People value the **diversity** of the neighborhood and want a multicultural park where everyone feels **welcome**. Many were interested in providing an area for **performances** and **art** to showcase the various cultures.

Many would use the park to **gather** with friends and family, especially around **food**. Open **green** space, **shade** and **seating** were a priority.

People want to make sure that **play structures** and **field** can accommodate **kids** of different age groups, making sure the **teens** are included in addition to the small kids. Seating should be provided so **parents** and **families** can sit while kids play.

Many would use the park to **relax**, and would want the park to feel **natural** and **green**, and provide areas for planting and **gardening**.

Walking is an important opportunity to **socialize** with friends, enjoy the outdoors and **exercise**. Paths should accommodate **groups** walking together and the length should be maximized to promote longer walks.

People are concerned about **litter** and **safety**. Trash receptacles and **lighting** should be located to promote use and good visibility around the park.

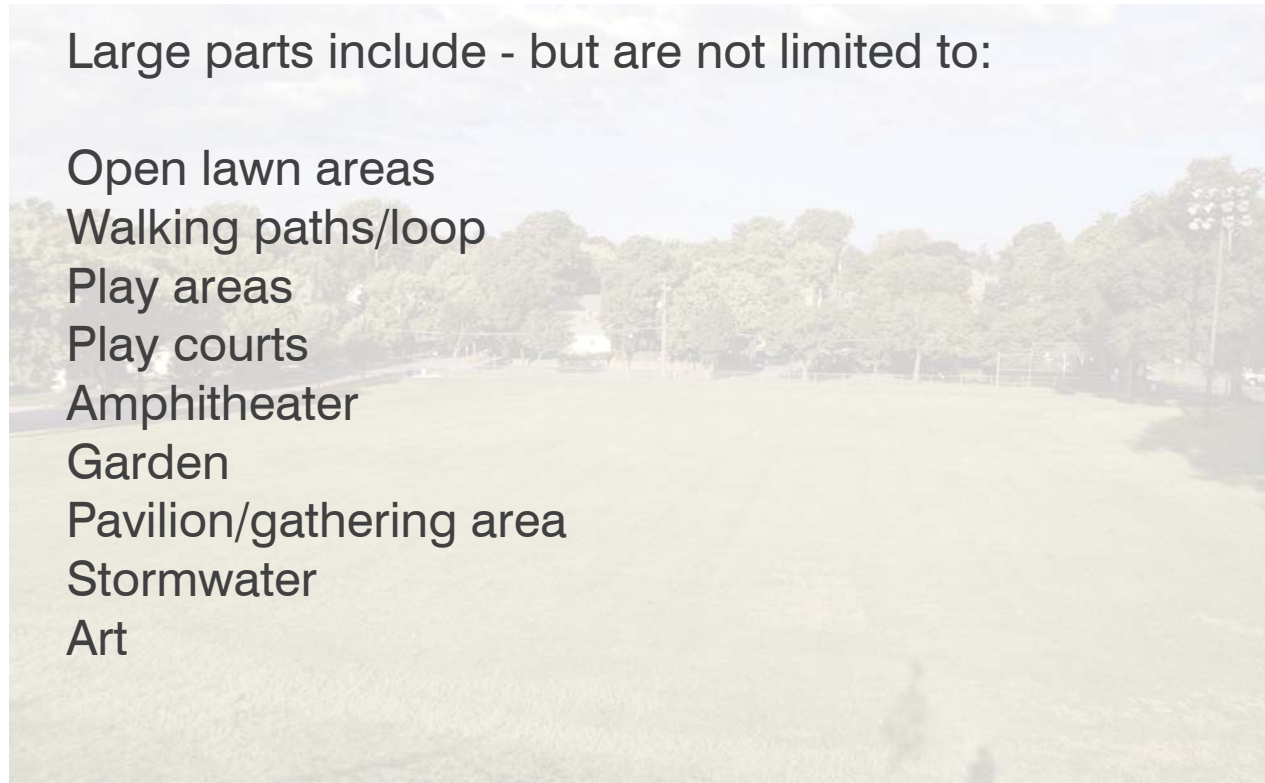
PARK DESIGN PROCESS

STEP ONE - ARRANGE MAJOR PARK COMPONENTS

We are deciding how the big program areas fit together within Midway Peace Park (MPP).

Large parts include - but are not limited to:

- Open lawn areas
- Walking paths/loop
- Play areas
- Play courts
- Amphitheater
- Garden
- Pavilion/gathering area
- Stormwater
- Art

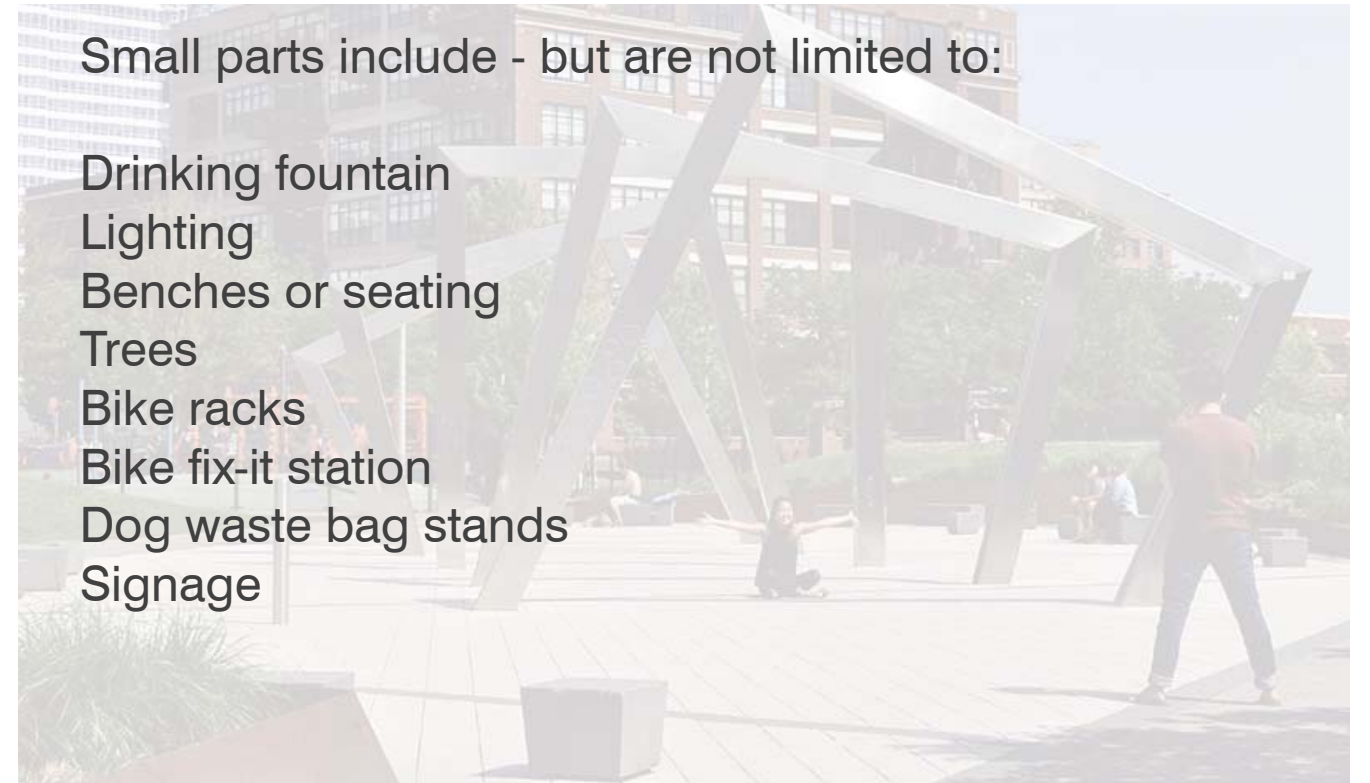


STEP TWO - LOCATIONS FOR SMALL AMENITIES


Where we put the bigger parts will influence the location of smaller parts. This step will happen later.

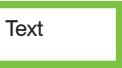
Small parts include - but are not limited to:

- Drinking fountain
- Lighting
- Benches or seating
- Trees
- Bike racks
- Bike fix-it station
- Dog waste bag stands
- Signage



AMENITIES NEAR MIDWAY PEACE PARK

 = half mile radius from MPP

 Text = amenities within a half mile from MPP



April 25, 2018 -- 7

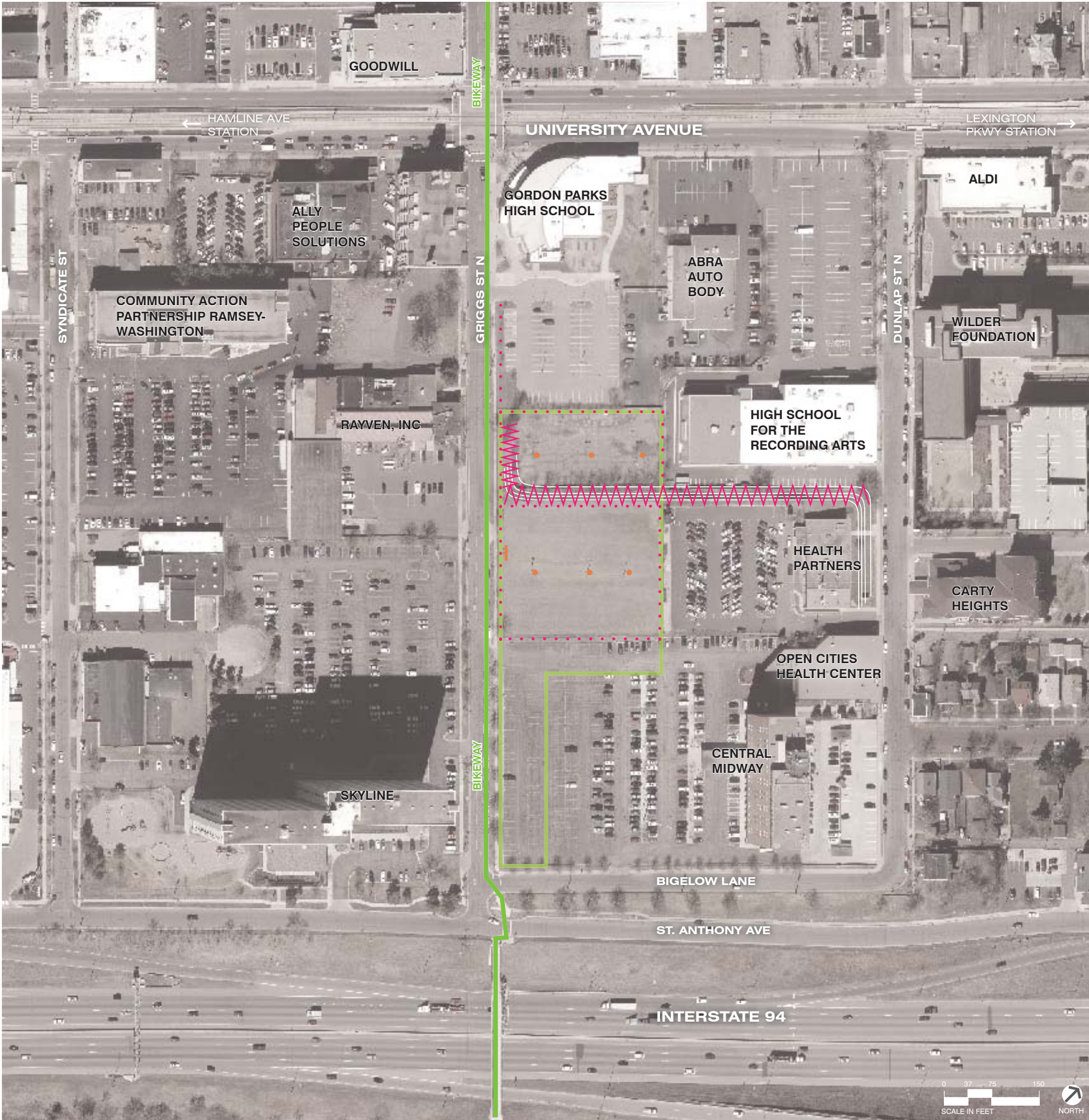
PARK CONSTRAINTS

SITE CHALLENGES

- Steep hill and wall
- Parking easement on south parcel
- Utility poles and fences create barriers



- ⚡ Steep hill and wall
- Sign and light pole
- ⋯ Fence
- ▭ Future Park Area

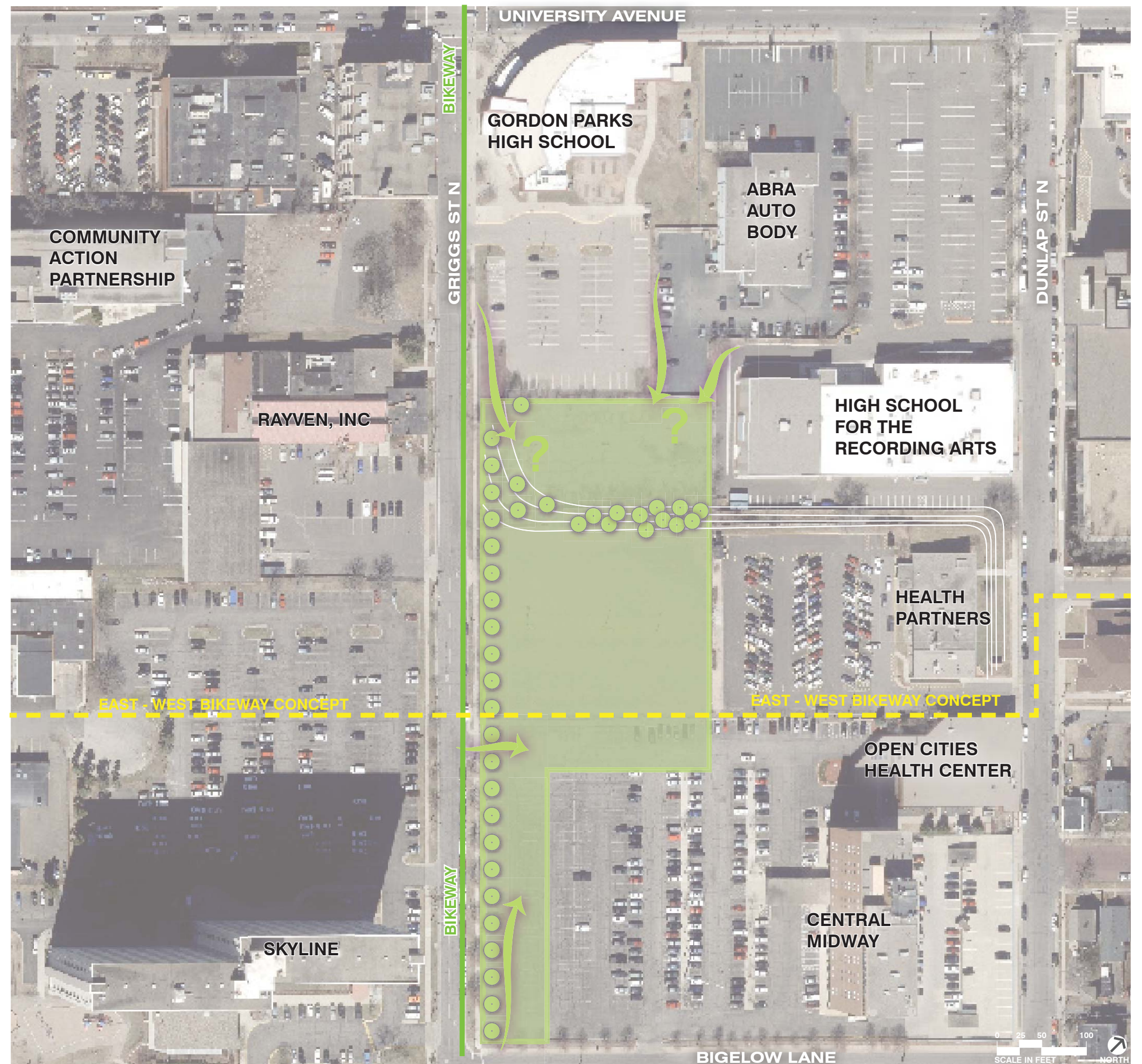
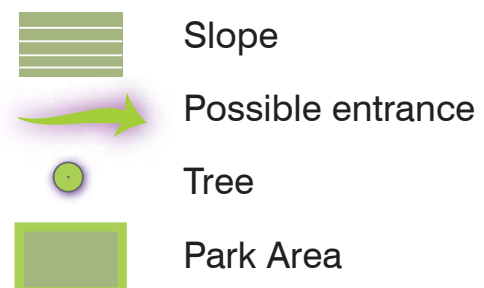


April 25, 2018 -- 8

PARK OPPORTUNITIES

SITE POSSIBILITIES

- Connection from **east is difficult**, City does not own adjacent property
- Will need to work with neighbors to create entrance with **least possible impacts**
- East-west **bike route is desired**, station area plan shows a route through Skyline parking lot to Carty Heights, we will determine where it best fits in our design



April 25, 2018 -- 9

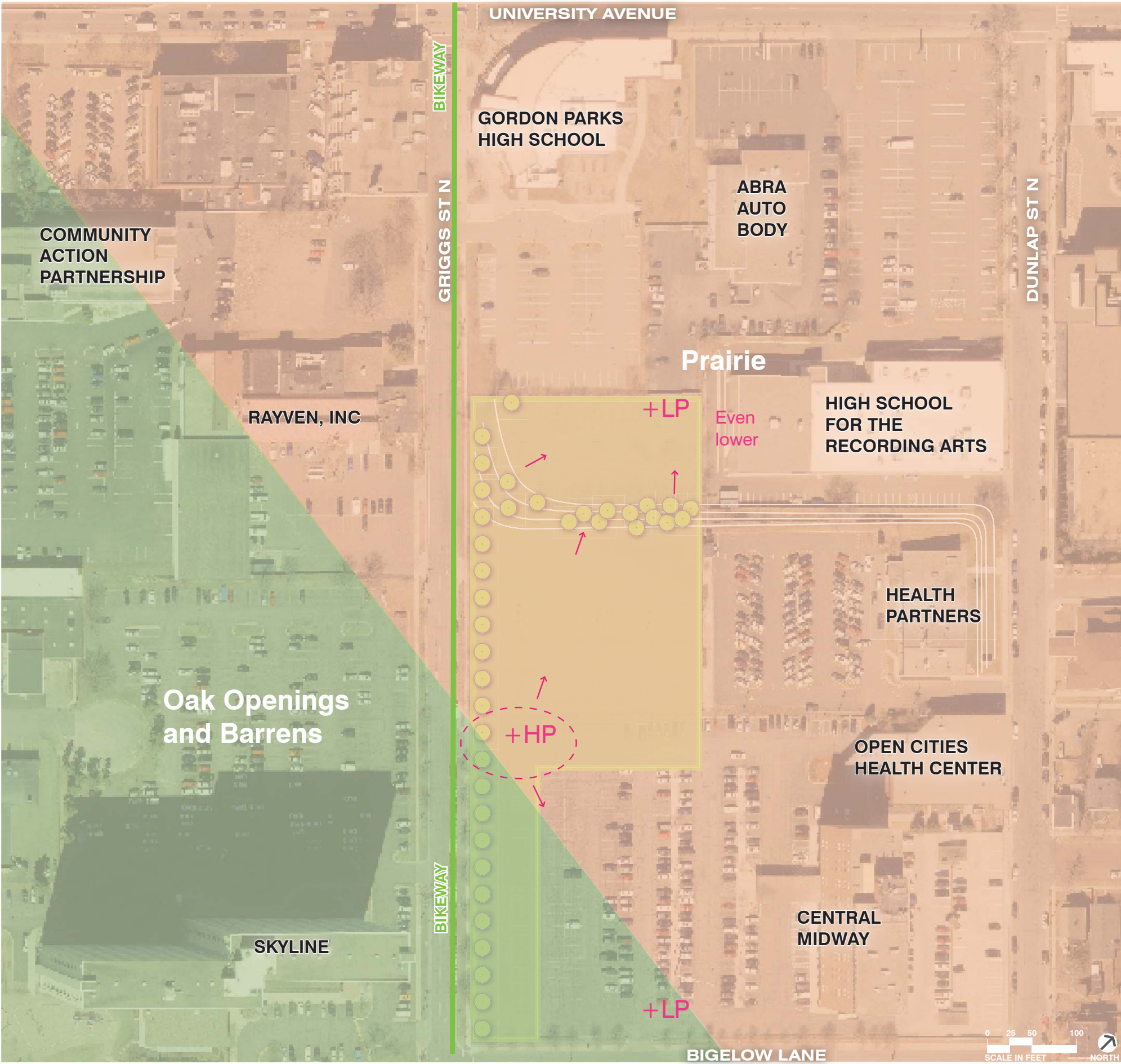
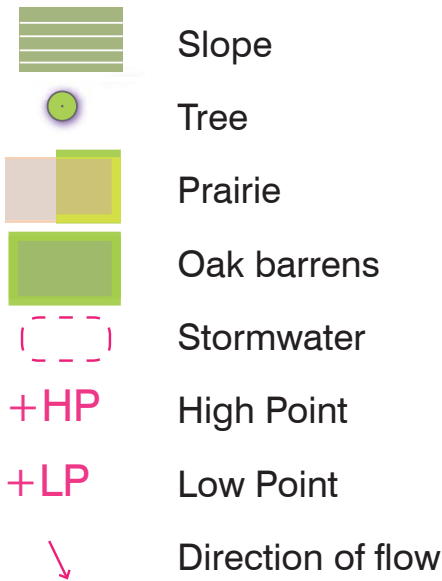
SITE FUNCTIONS

ECOLOGY

- Pre-settlement vegetation was “Prairie” and “Oak openings and barrens”

STORMWATER

- Surface water flows from high point (+HP) at curb cut near edge of north parcel and middle parcel, then down toward HSRA. Some water flows toward Bigelow Lane
- Low point (+LP) at GPHS parking lot, even lower behind gym at HSRA
- Property line between south parcel and middle parcel acts as a ridgeline, basically dividing two drainage areas



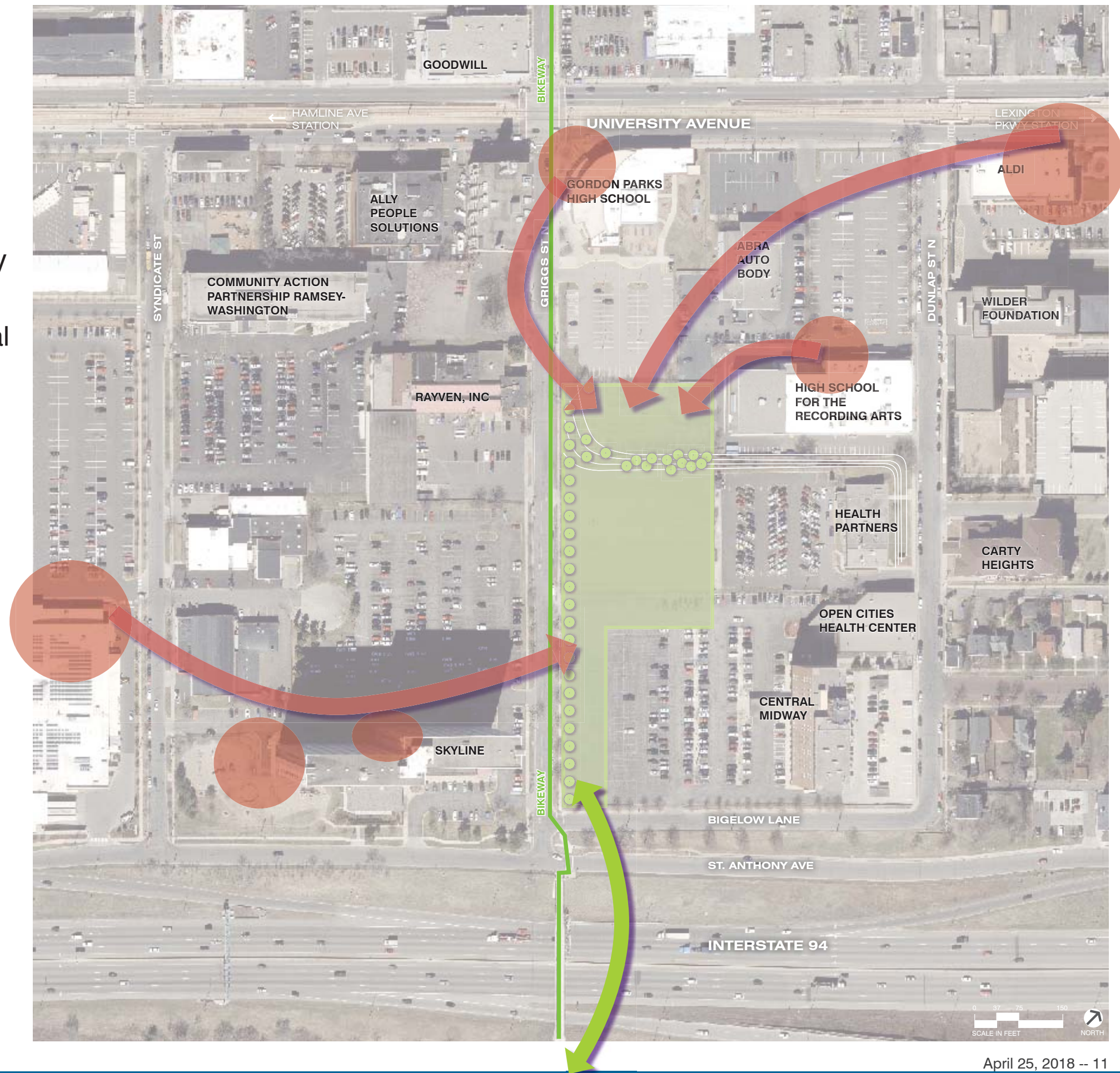
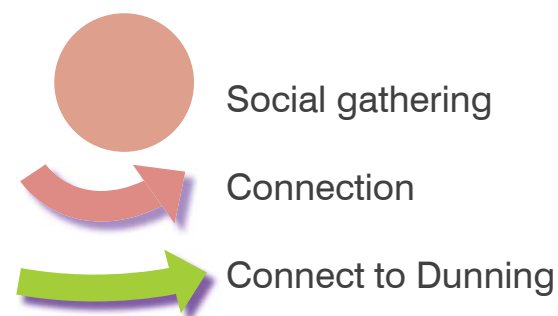
SITE FUNCTIONS

SOCIAL

- No parks in nearby area (north of I-94)
- Social gathering at Target, ALDI, near high schools - goal is to bring that energy to the park
- Identity of community outreach and social services at CAPRW, Wilder Foundation

CONNECTIVITY

- Reach across I-94, greening the Griggs bridge, make MPP and Dunning complementary parks (concept, not in this project)
- Keep the MPP field un-programmed and open to everyone



April 25, 2018 -- 11

SITE FUNCTIONS

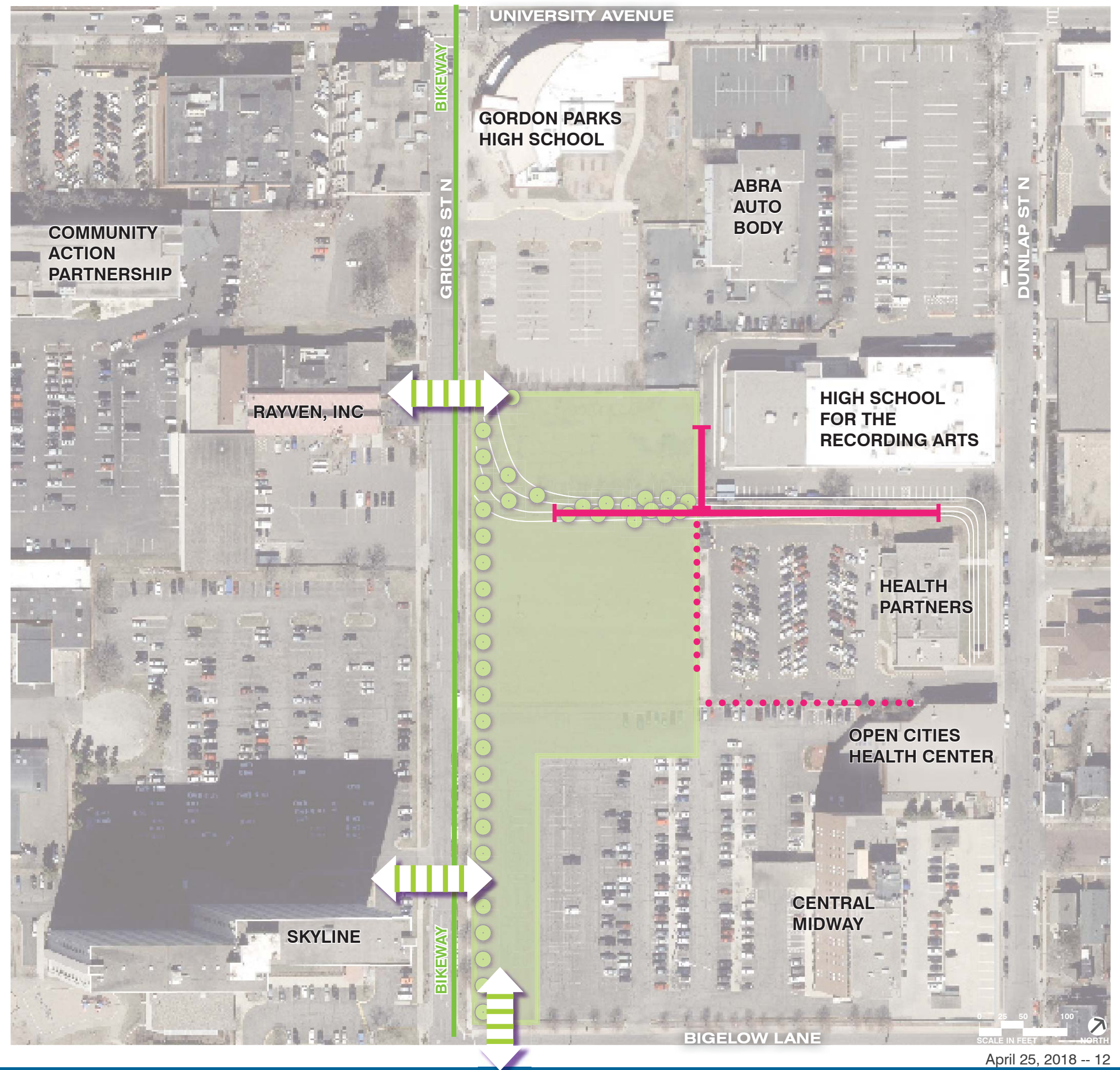
MAINTENANCE

- Maintain access for lawn mowers, trash removal, plowing, etc. to both north and middle parcel
- Access to north parcel near Abra Auto Body and HSRA will be challenging

SAFETY

- Ensure crossing Griggs Street is safe for children and everyone (outside of scope but starting conversations)
- Lighting and sight lines across park and adjacent parking lots
- Link to street accident data:

<https://www.stpaul.gov/departments/police/pedestrian-and-bike-crash-data-city-st-paul>



April 25, 2018 -- 12

SCALE COMPARISONS

HOW BIG IS THE PARK?

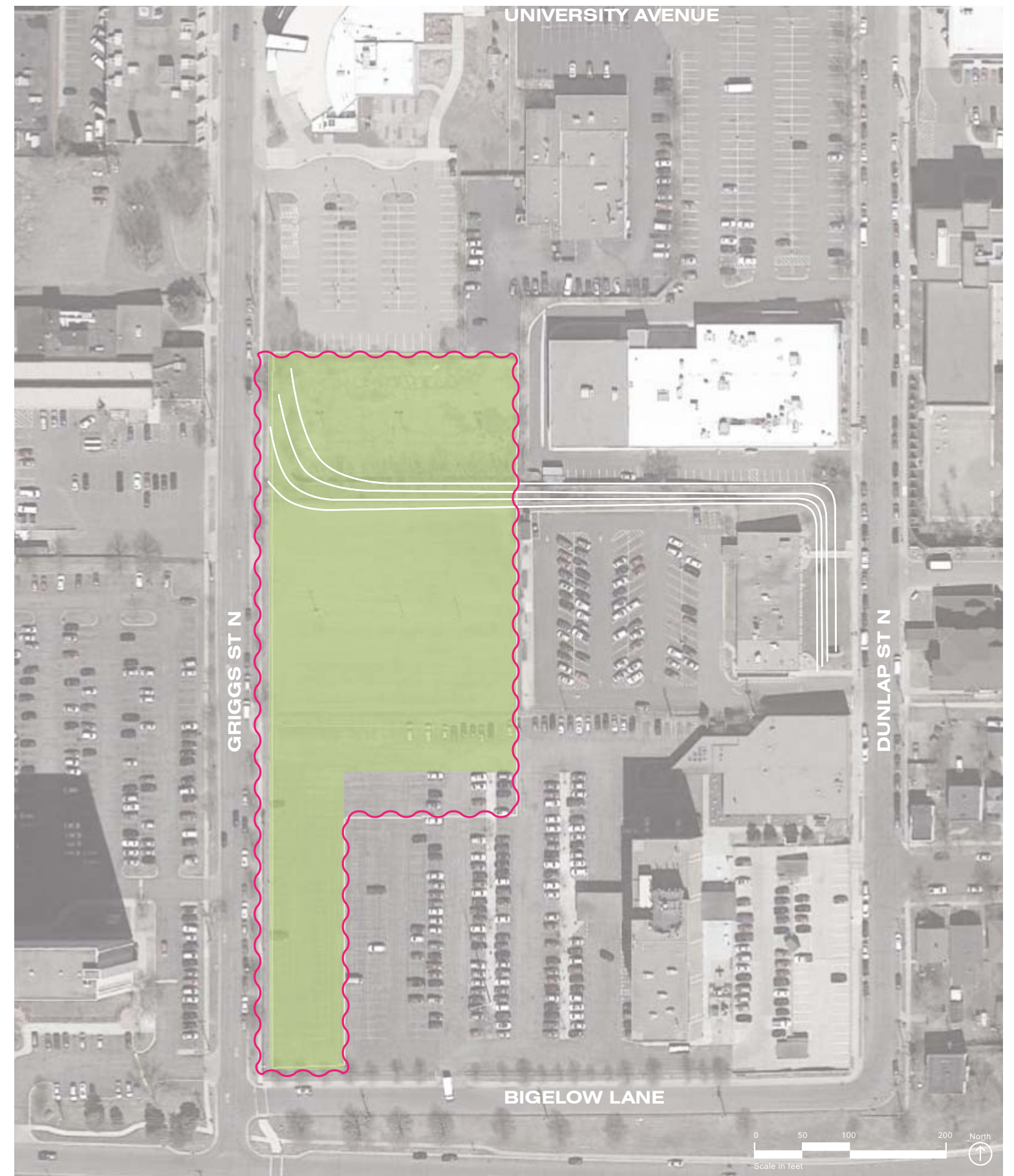
- Park area will be **2.8** to 3.1 acres or 125,000 - 140,000 sf
- Size depends on layout of parking lot in south

WHAT IS IN THE PARK?

- Studying other parks helps us **imagine the size and shape** of Midway Peace Park
- Slopes and walls
- Play areas
- Field layout / dual use
- Walking trails
- Amphitheater
- Water features
- Stormwater
- Pavilion/gathering area

Legend







	Court/Field		Walking path		Art / sculpture
	Open Field		Tree		Water feature
	Playground		Plaza		Pavilion
		Slope		Stormwater area or rain garden	



SCALE COMPARISONS

Margaret Park, St. Paul MN














- | | | |
|---|--|---|
|  Court/Field |  Walking path |  Art / sculpture |
|  Open Field |  Tree |  Water feature |
|  Playground |  Plaza |  Pavilion |
| |  Slope / hill |  Stormwater area or rain garden |

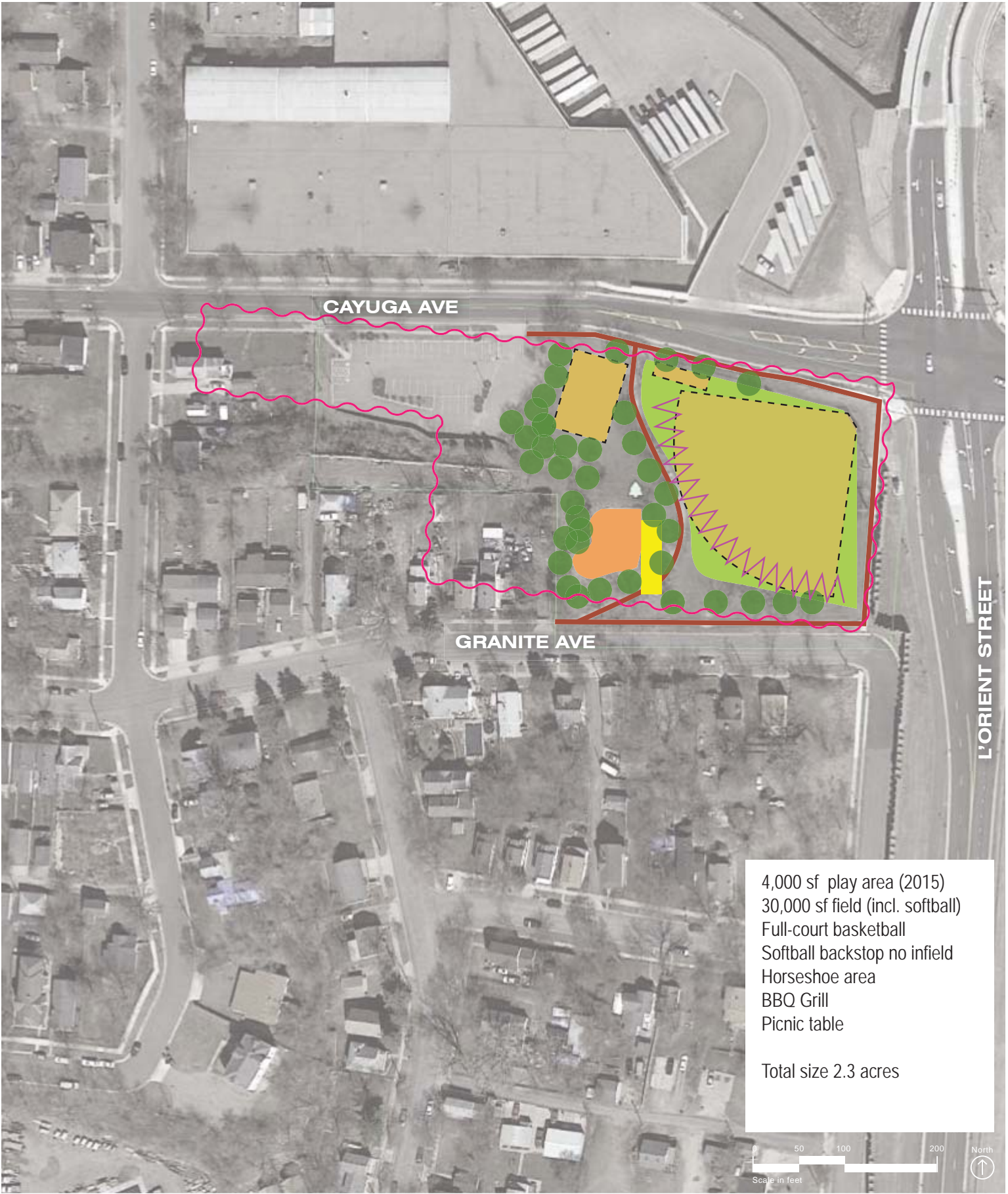


SCALE COMPARISONS

Cayuga Park, St. Paul MN



- | | | |
|---|--|---|
|  Court/Field |  Walking path |  Art / sculpture |
|  Open Field |  Tree |  Water feature |
|  Playground |  Plaza |  Pavilion |
| |  Slope / hill |  Stormwater area or rain garden |



SCALE COMPARISONS

Jackson Square Park, Minneapolis MN



James Brenner Sculpture

- Court/Field

Walking path

Art / sculpture

Open Field

Tree

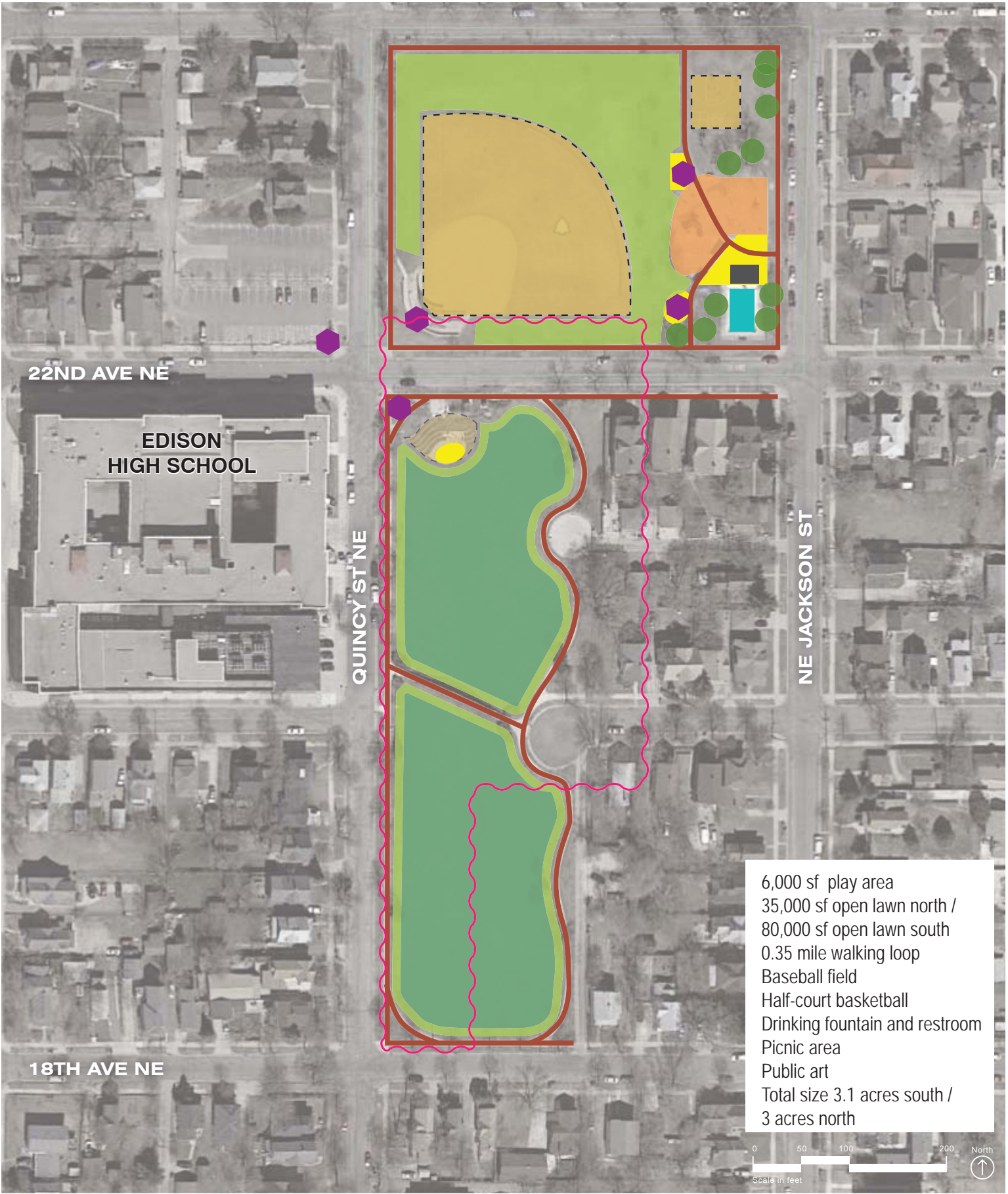
Water feature

Playground

Plaza

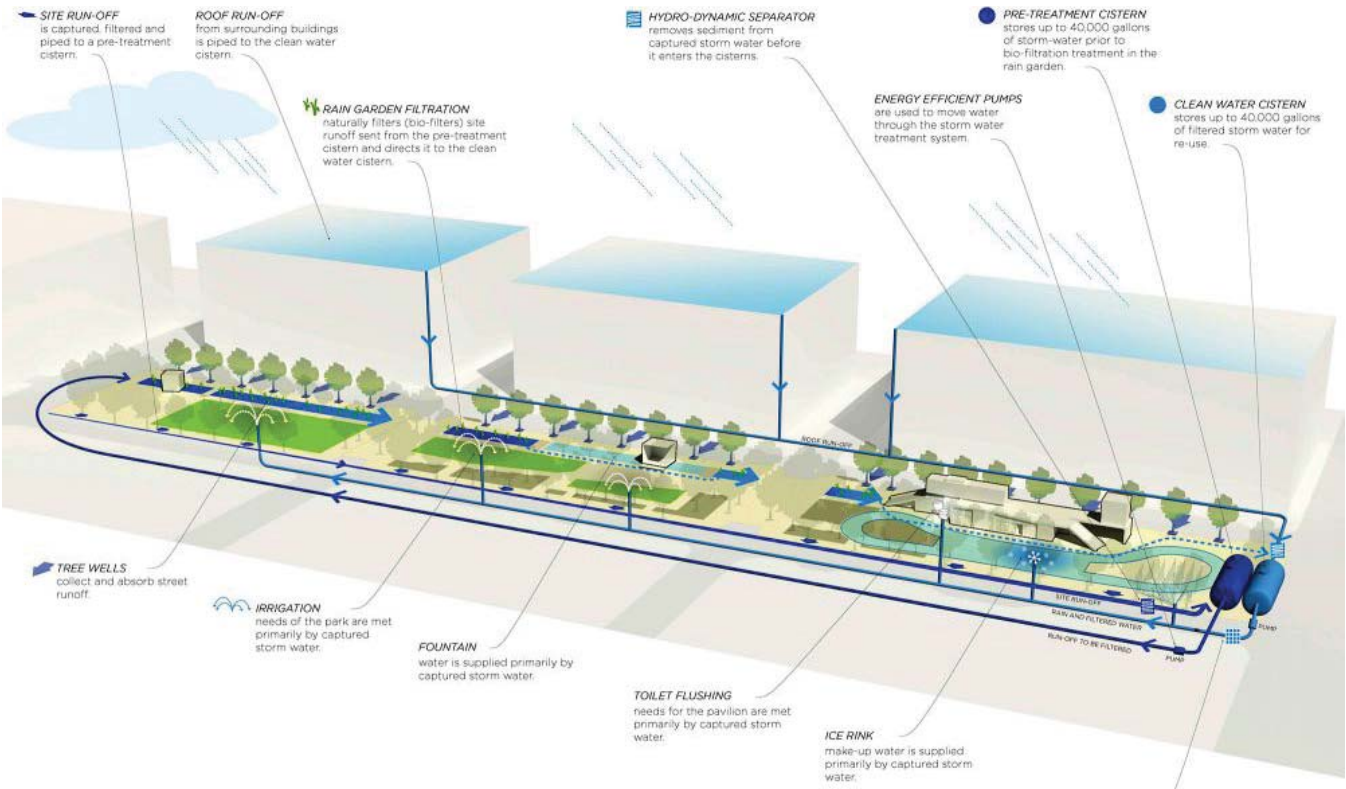
Pavilion











Stormwater area or rain garden

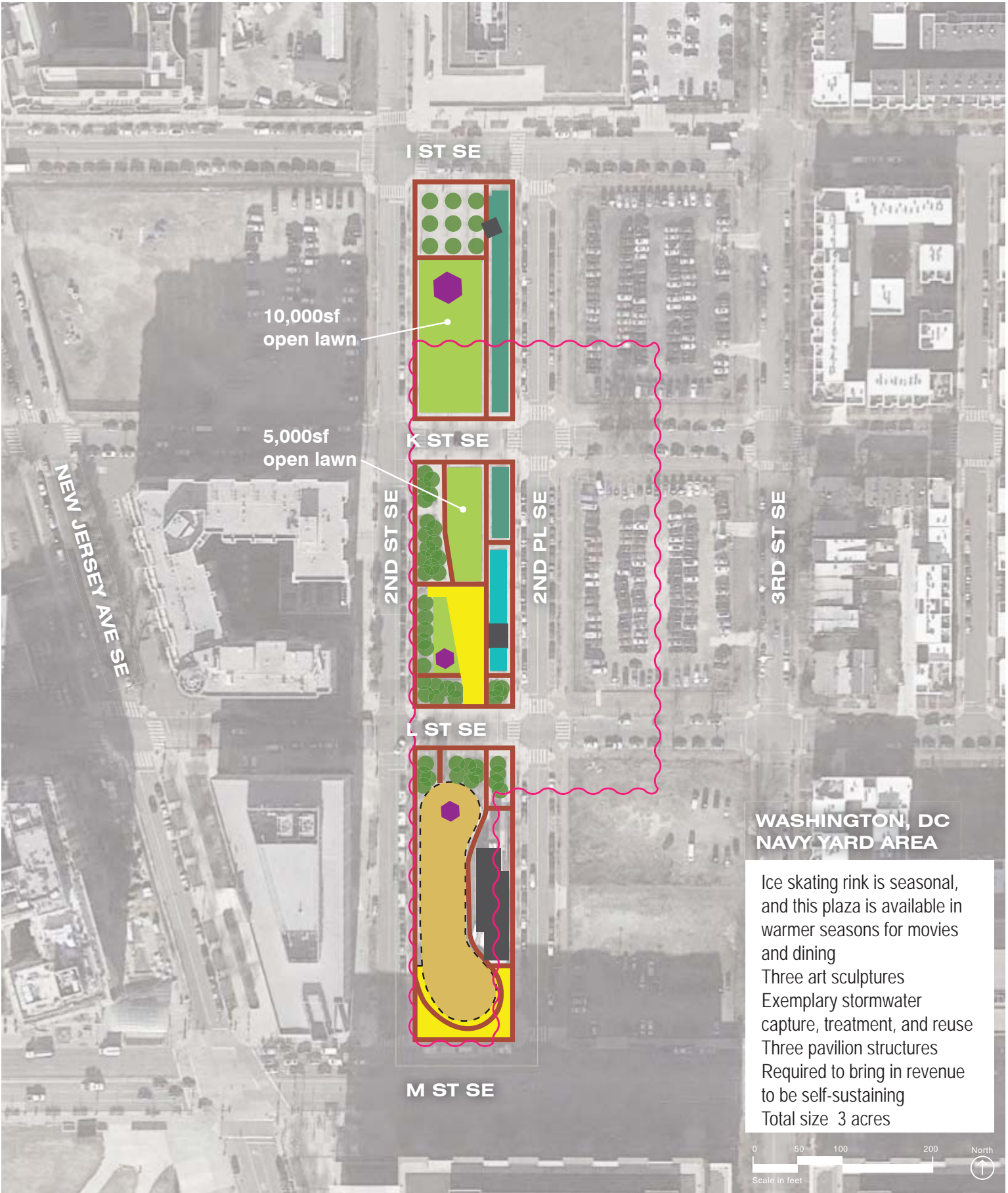


SCALE COMPARISONS

Canal Park, Washington DC



- | | | |
|---|--|---|
|  Court/Field |  Walking path |  Art / sculpture |
|  Open Field |  Tree |  Water feature |
|  Playground |  Plaza |  Pavilion |
| | |  Stormwater area or rain garden |



SCALE COMPARISONS

Mary Bartelme Park, Chicago IL



Court/Field

Walking path

Art / sculpture

Open Field

Tree

Water feature

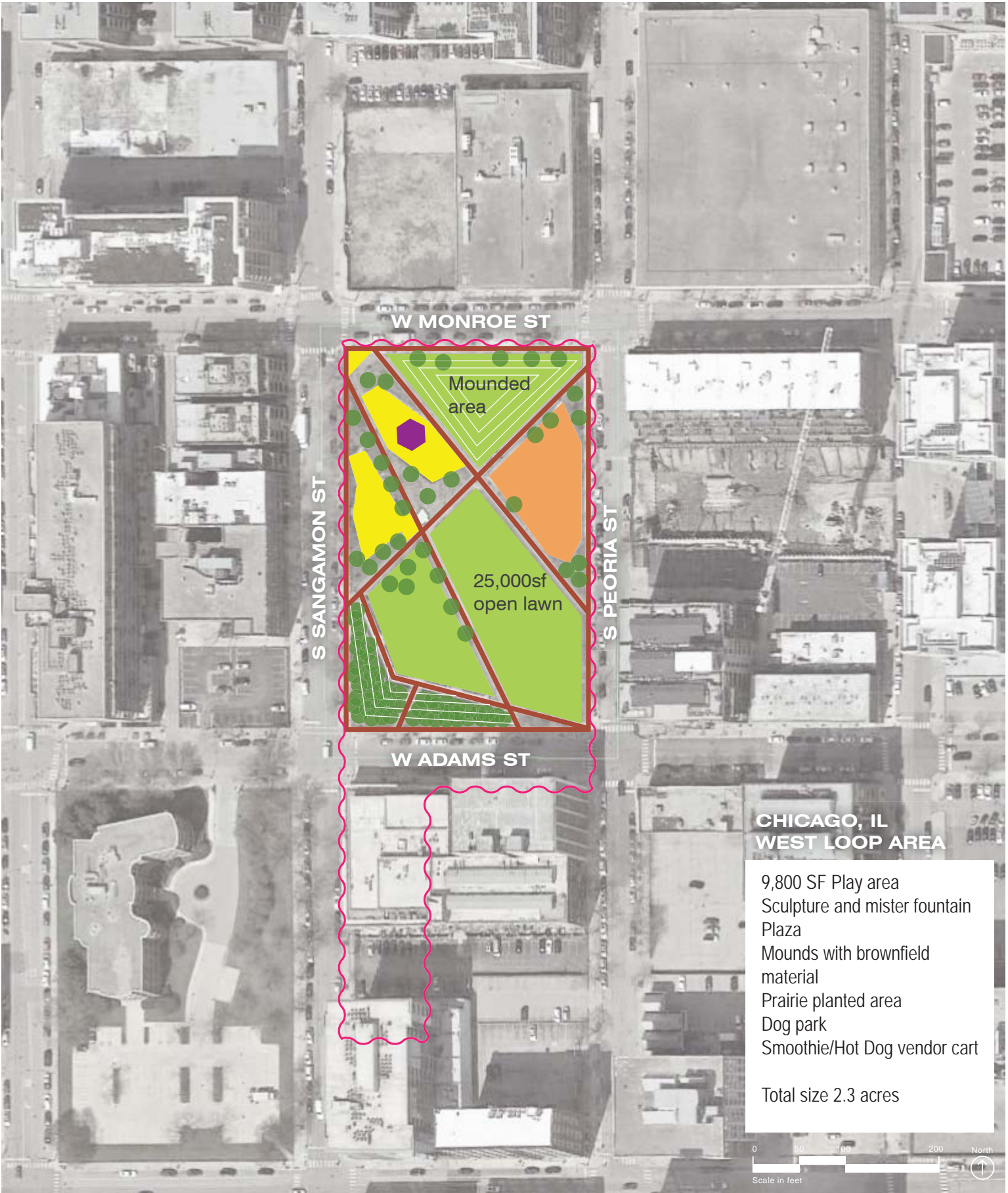
Playground

Plaza

Pavilion

Slope

Stormwater area or rain garden



WHAT FITS AT MIDWAY PEACE PARK?

6,000 sf playground

Amphitheater with plaza

9,800 sf playground

Half court basketball

5,000sf open lawn

10,000sf open lawn

20,000sf open lawn

1,500 sf plaza

Junior Soccer Field

4,800 sf plaza

25,000sf open lawn

Court/Field

Open Field

Playground

Walking path

Tree

Plaza

Slope

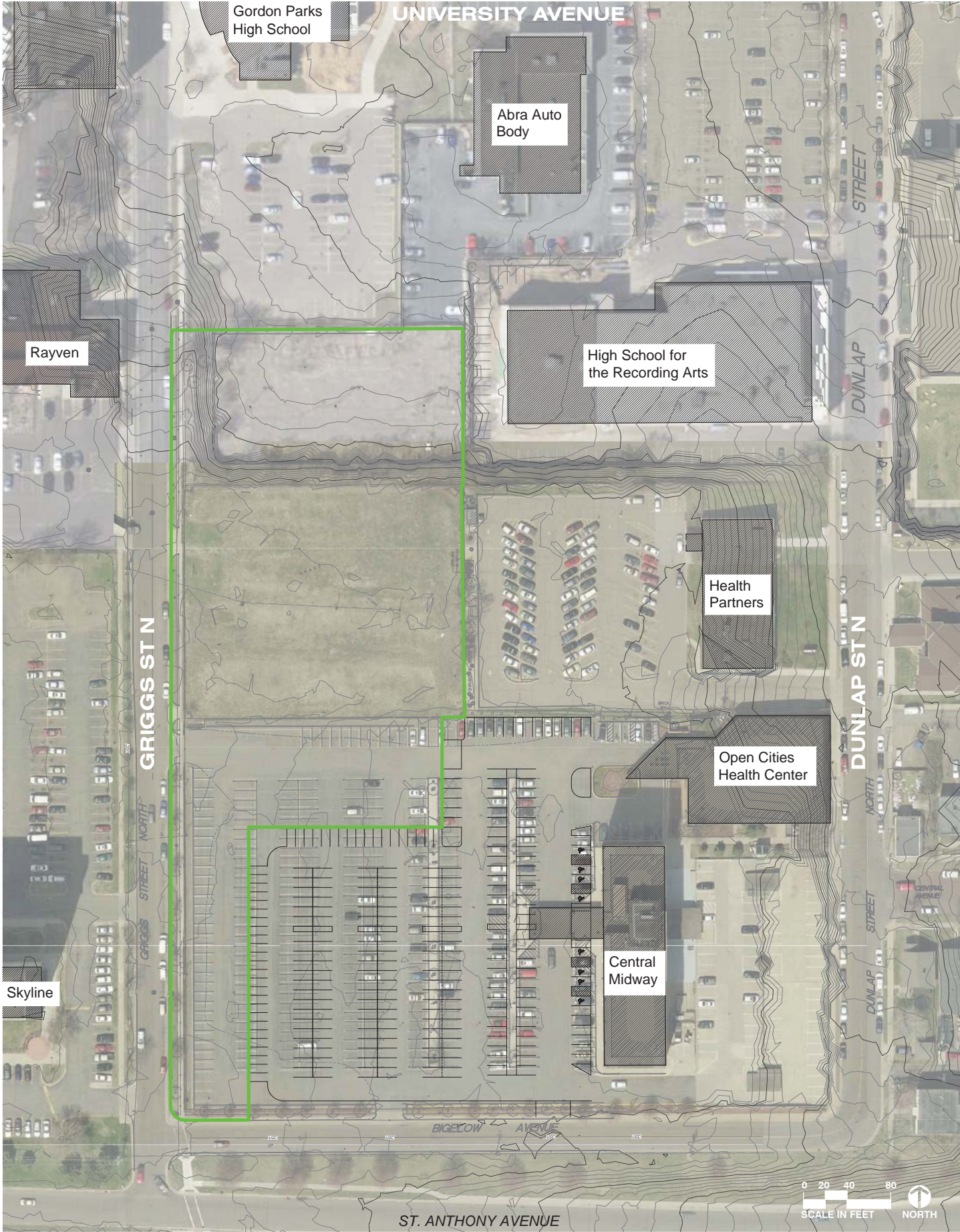
Art / sculpture

Water feature

Pavilion

Stormwater area or rain garden

Make your own path using pipe-cleaners



NEXT STEPS AND SCHEDULE

PARK CLEANUP - APRIL 28, 2018

9:00 AM - 11:30 AM

Meet TPL and the City at the grassy middle area on Saturday
We will have coffee and donuts, as well as gloves and bags!

Middle parcel will be open through the summer!

MEETING 3 - MAY 23, 2018

High School for the Recording Arts

Topics will include:

- Concept plans
- Priorities for amenities/program
- Preliminary cost estimate
- Stormwater and engineering update
- Slope/grading options

OPEN HOUSE - JULY 2018

Design concept: grading, layout, materials
Revised cost estimate with engineering input

POTENTIAL ARTIST CALL EARLY 2019

CONSTRUCTION BEGINS 2019

PARK OPEN LATE 2019

QUESTIONS & EVALUATION

THANK YOU!