

*Wadajir aan udisano xarun ciyareed oo
caruurteena anfici donta mustaqbalka*

*Baga nagayaan dhufaan
Walii wajjiin paarkii kana haa ijaarru*

Together let's get this park built

WELCOME

AGENDA

MEETING 3 - JUNE 6, 2018

High School for the Recording Arts

1. Welcome and Introductions (5:30 - 5:40 PM)

- a) Project update: engineer contract status, environmental testing, artist process

2. Layouts from Last Meeting (5:40 - 5:50 PM)

- a) Review four groups' park arrangements
- b) Discuss ideas generated from layouts

3. Concept Layout Plans (5:50 - 6:15 PM)

- a) Review three concepts
- b) Discuss priorities for park layout - what did you like? What did we leave out?

4. Amenities and Preferences (6:15 - 6:45 PM)

- a) Present photos of potential park amenities and styles
- b) Split into two groups
 - Group 1 votes on amenities by placing a sticker on their preference
 - Group 2 votes on layout plans (and can comment by writing on post-it)
 - then switch-- 10 minutes each, 20 minutes total

5. Wrap-up (6:50 - 7:00 PM)

- a) Feedback
- b) Next steps and schedule
- c) Questions



June 6, 2018 -- 2

PARK CONSTRAINTS

SITE CHALLENGES

- Steep hill and wall
- Parking easement on south parcel
- Utility poles and fences create barriers

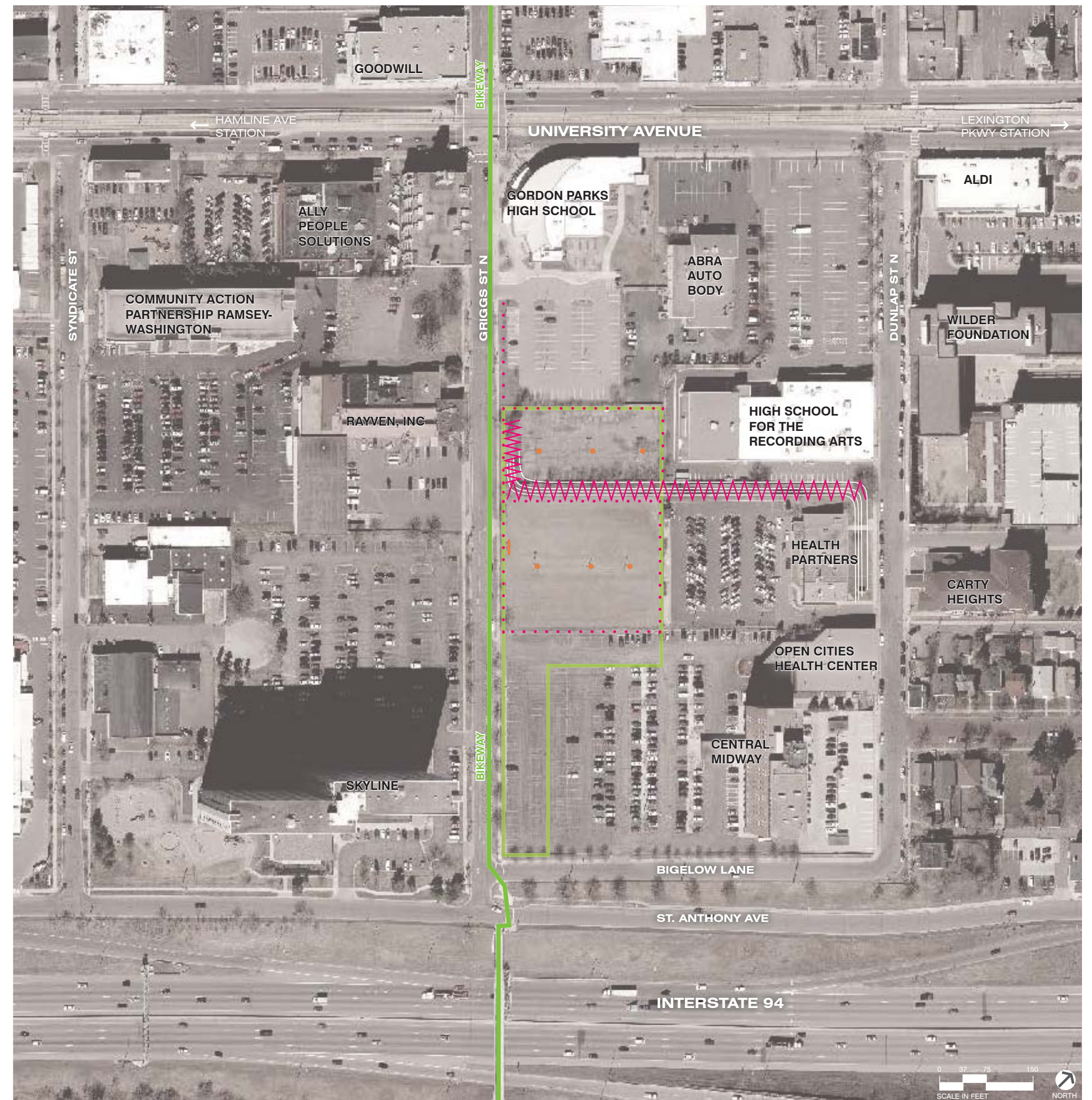
SOCIAL

- Few parks in nearby area (north of I-94)
- Social gathering at Target, ALDI, near high schools - goal to bring that energy to the park

CONNECTIVITY


- Reach across I-94, greening the Griggs bridge, make MPP and Dunning complementary parks (concept that Parks can support but, not in this project)
- Keep the MPP field un-programmed and open to everyone

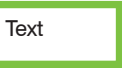
- ▤ Steep hill and wall
- Sign and light pole
- ⋯ Fence
- ▭ Future Park Area



June 6, 2018 -- 3

AMENITIES NEAR MIDWAY PEACE PARK

 = half mile radius from MPP

 Text = amenities within a half mile from MPP



WHAT FITS AT MIDWAY PEACE PARK?

6,000 sf playground

Amphitheater with plaza

9,800 sf playground

Half court basketball

5,000sf open lawn

10,000sf open lawn

20,000sf open lawn

1,500 sf plaza

Make your own path using pipe-cleaners

Court/Field

Open Field

Playground

Walking path

Tree

Plaza

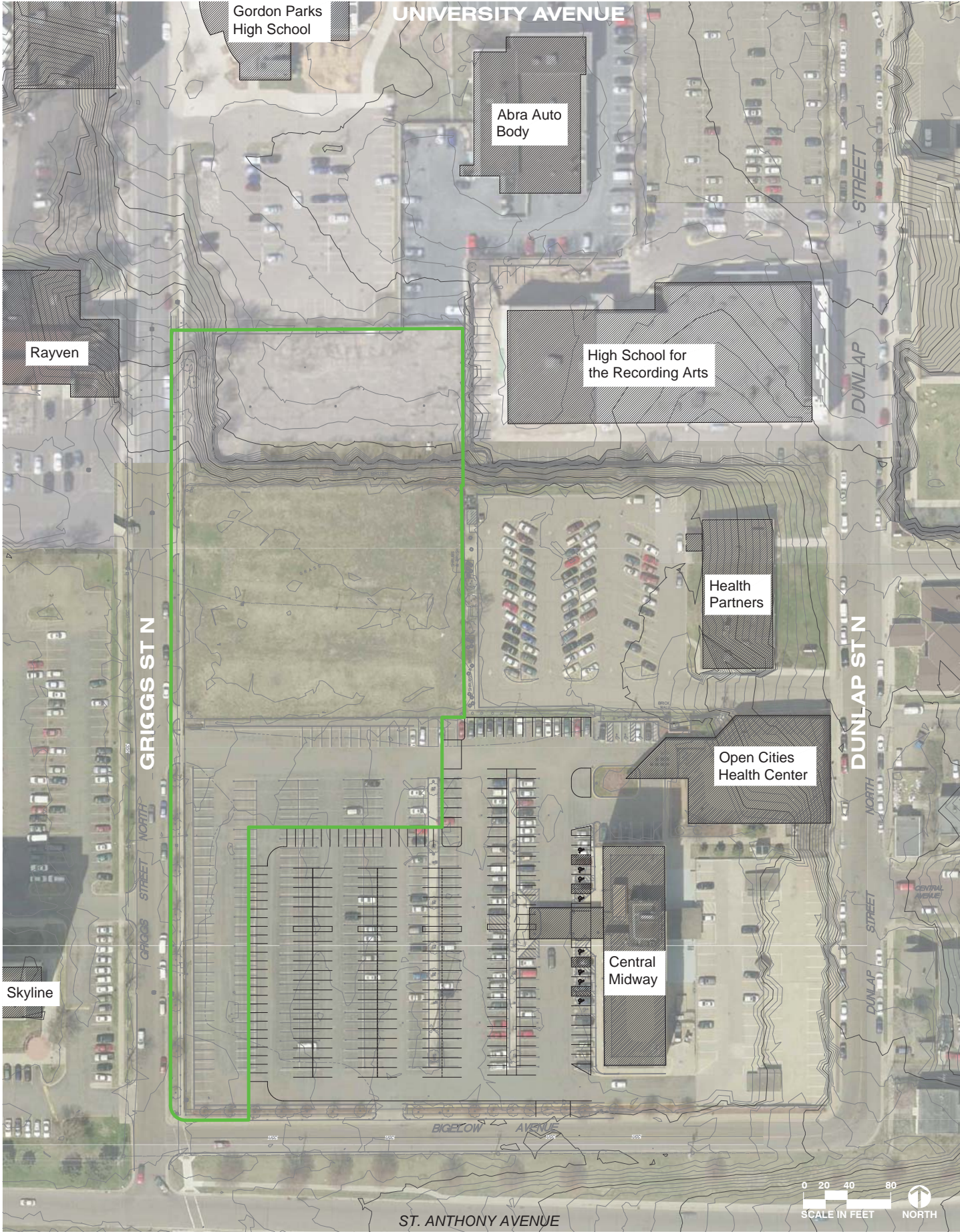
Slope

Art / sculpture

Water feature

Pavilion

Stormwater area or rain garden



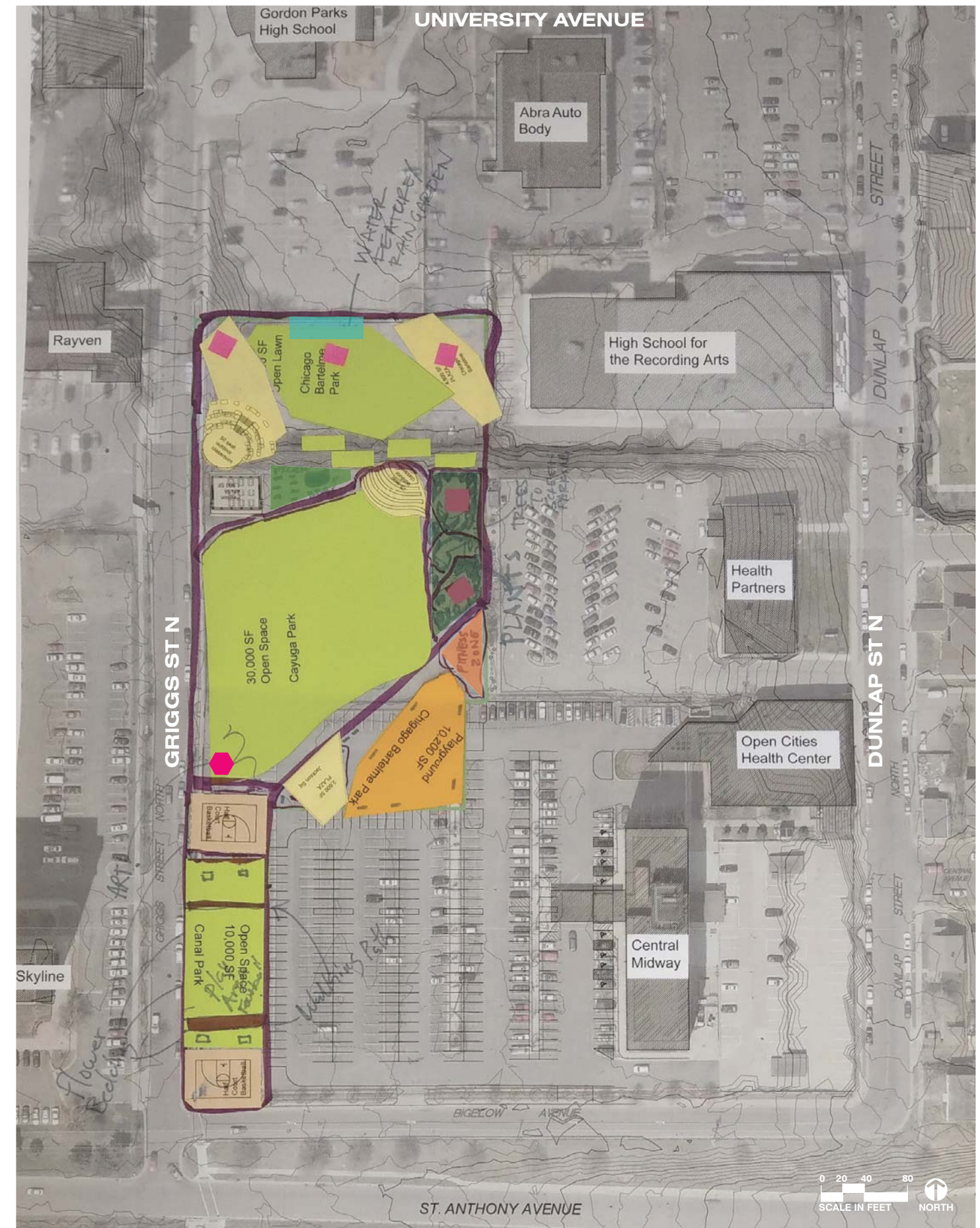
June 6, 2018 -- 5

GROUP LAYOUT #1



NOTES ON LAYOUT 1

- **Terraced gardens down the hill**, with a large **stormwater/** rain garden feature at the bottom
- Placed art at the high point (visibility), and in planted area
- Corner near Health Partners has playground, a **fitness zone** (for adults), and seating for families/elders
- Larger structured outdoor classroom in hill for high school use. Second casual amphitheater space facing the fields
- **Pavilion at the top of the hill**, close to Griggs St and the back of the outdoor classroom, paired with a plaza
- Planted buffers near Health Partners and Open Cities, for people walking, offers a place to sit and appreciate art
- Mixture of **courts and planted areas** with benches/picnic tables in south



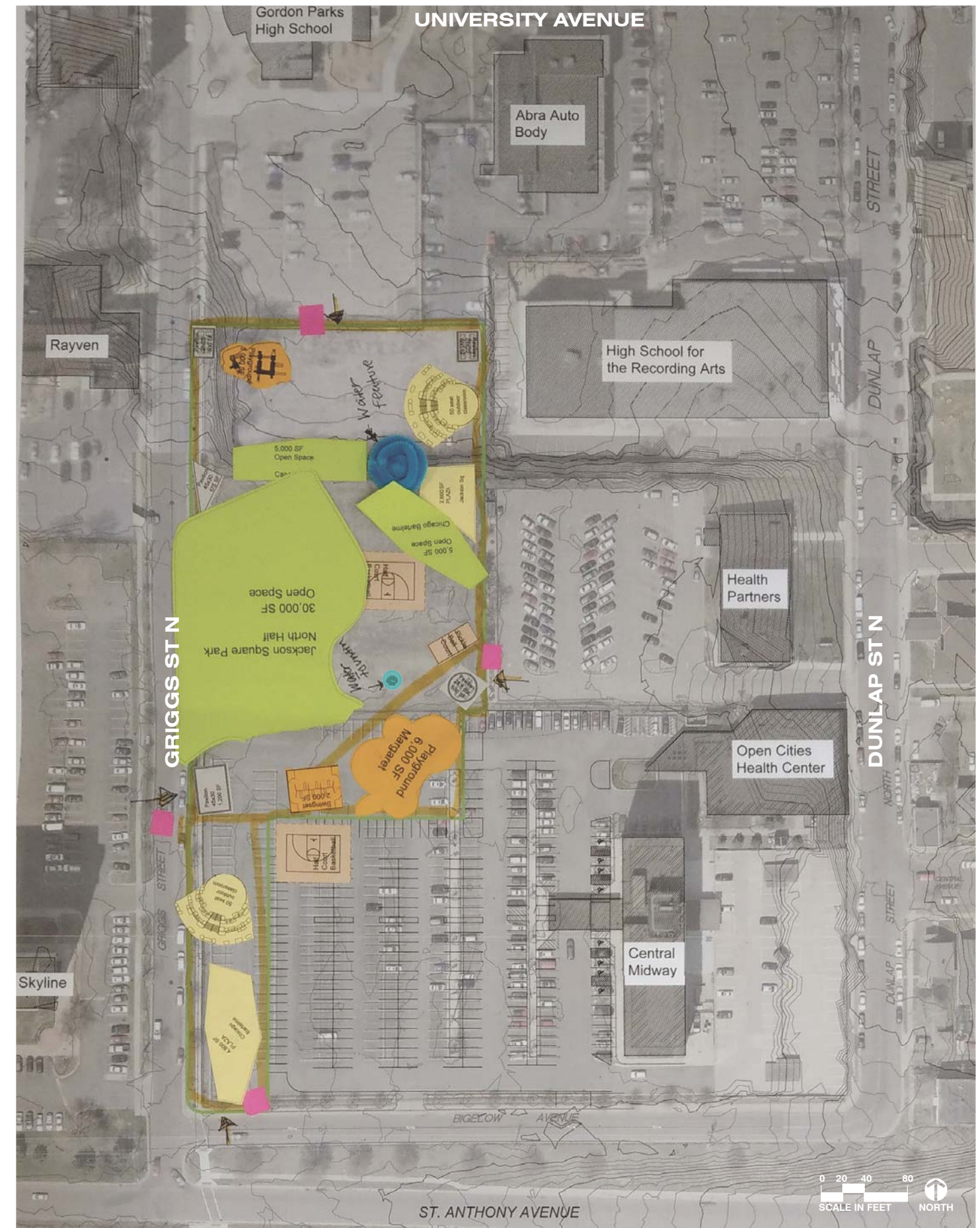
June 6, 2018 -- 6

GROUP LAYOUT #3



NOTES ON LAYOUT 3

- Deliberate about putting the **play area** (the main one) in a place that was **visible and accessible** for views from the pavilion so the elders felt like they were part of the activity.
- Make sure there is shaded seating for the elders
- Most interested in **basketball**
- Want multiple crossings/entrances to the park from the other side of Griggs St.
- Want connections to be made to the east of the park using entrances and plaza spaces.



June 6, 2018 -- 7

GROUP LAYOUT #4



NOTES ON LAYOUT 4

- Play/sloped climbing wall on hill.
- Art and water together.
- Buffer of greenery at the Health Partners parking lot and the middle/Whitaker parcel.
- Excited about a southern path that weaves between groups of seating and trees to create smaller gathering areas.
- The large play area toward the center of the middle (Whitaker) parcel, to ensure safety and sightlines.
- Art on the edge of a welcoming plaza centered along Griggs St, thinking it would be useful for gathering.
- Pavilion moved into the green space.



June 6, 2018 -- 8

GROUP LAYOUT #5



NOTES ON LAYOUT 5

- Felt the narrow **south area should draw elders and children** in to the park, placed a small playground there with seating.
- Sought to maximize the walking loop length, placing it near activity, for example, basketball. A meandering path around the other park areas would be attractive and utilized.
- **Stormwater flowing over retaining wall** into a shallow pond on the north parcel.
- Park users look for seating, want seating provided through low perimeter barriers (vs. fencing), etc.
- Want a play area that serves older children
- Different from others with tot-lot in south, no pavilion, and inclusion of full court basketball (which teens want).

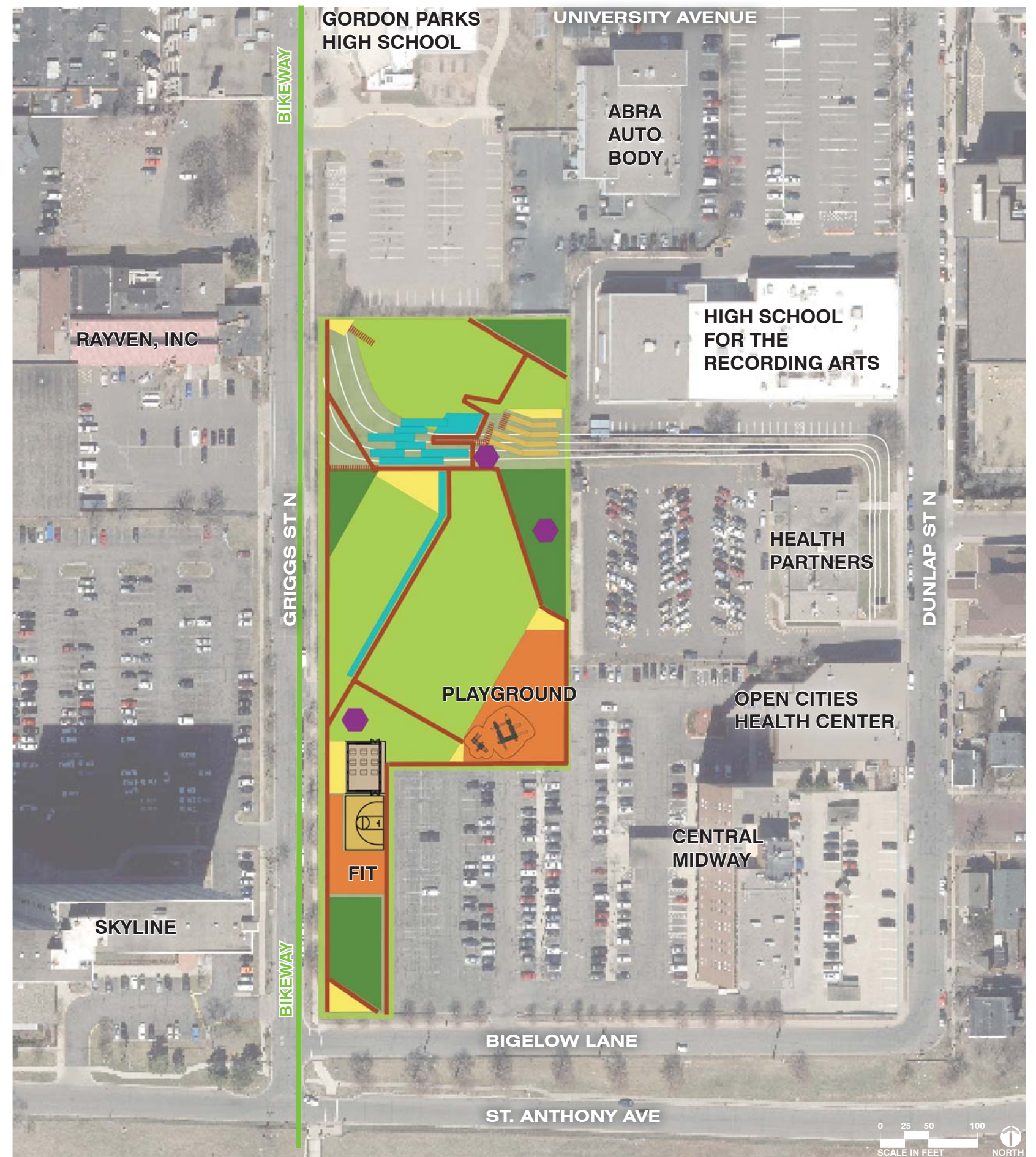


June 6, 2018 -- 9

OPTION 1 - CASCADE

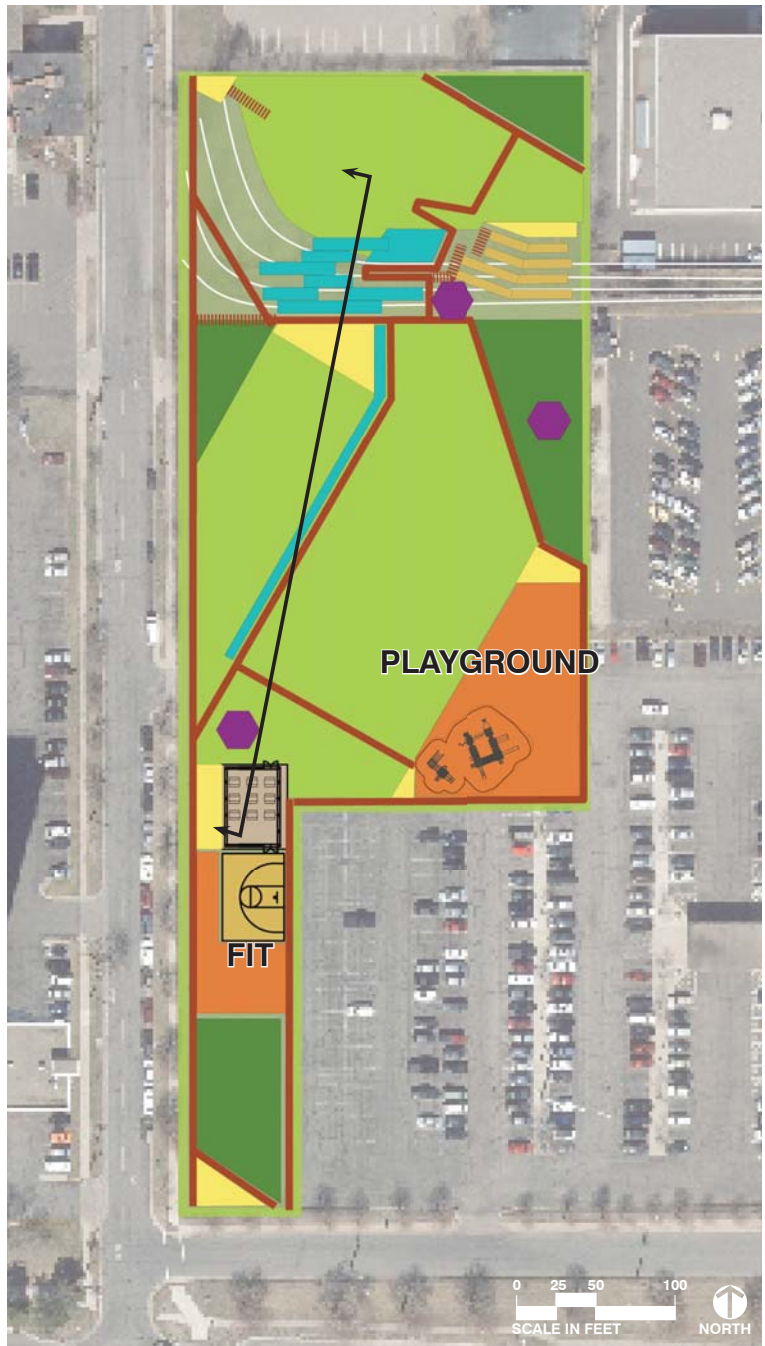
DESCRIPTION

- Use the **middle of the slope for stormwater** - creates a cascade, as various groups suggested
- Garden in corner between GPHS and HSRA
- Playground based on groups 1 and 3 location; tot-lot in south near where group 5 put it (but further into park for safety)
- Amphitheater pushed toward area between HSRA and GPHS, as group 3 located it. The **amphitheater is hard edged, structural**.
- Sloped walkway near Griggs St., grass at a gentle slope. Allows **sight lines** from bottom of hill to top.
- Stormwater moved toward Griggs St like in group 5
- Fitness and basketball in the south, similar to groups 5 and 1

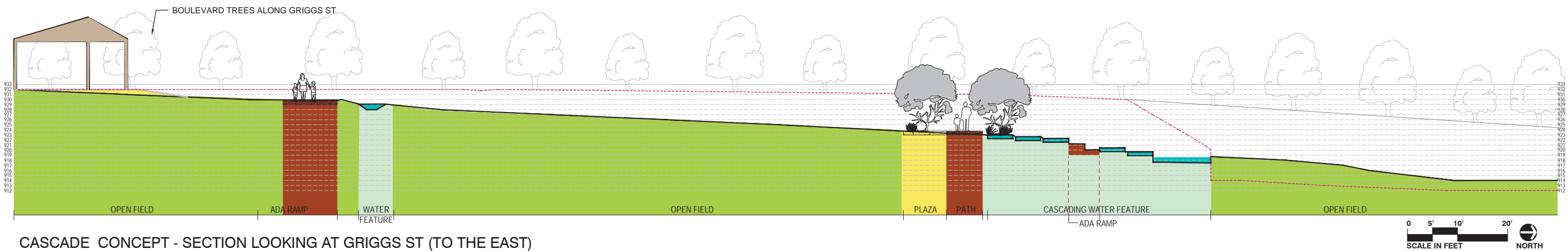


June 6, 2018 -- 10

OPTION 1 - CASCADE



- | | | |
|-------------|---------------|-------------------------------|
| Court/Field | Walking path | Pavilion |
| Open Field | Plaza | Garden or planted buffer area |
| Playground | Water feature | Line of existing conditions |



CASCADE CONCEPT - SECTION LOOKING AT GRIGGS ST (TO THE EAST)

OPTION 2 - THREE RINGS

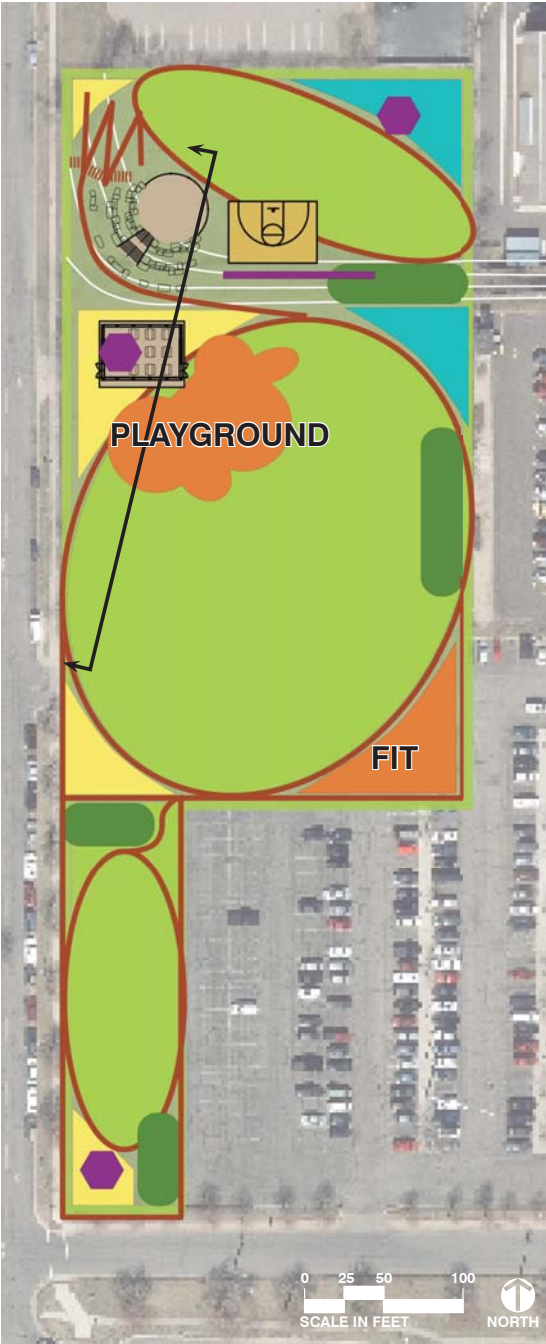
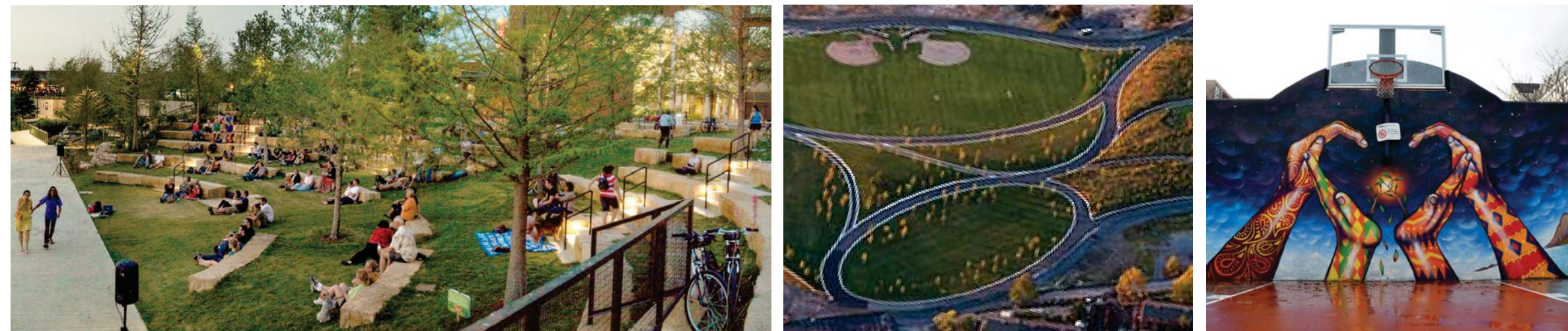
CONCEPT DESCRIPTION

- Slope dominated by amphitheater and walkway
- Water pool at top of slope, larger stormwater basin at corner between GPHS and HSRA
- Amphitheater is **naturalized, with grass and boulders** (some soft edges, some hard)
- Playground located toward the middle of the flat green middle parcel, similar to group 4
- Fitness moved south but still within sight of play
- **Basketball** in north (group 5) with art wall
- Buffer of planted area between Health Partners parking and open space - like group 1
- Pavilion located similar to group 1
- **Art near stormwater** like group 5

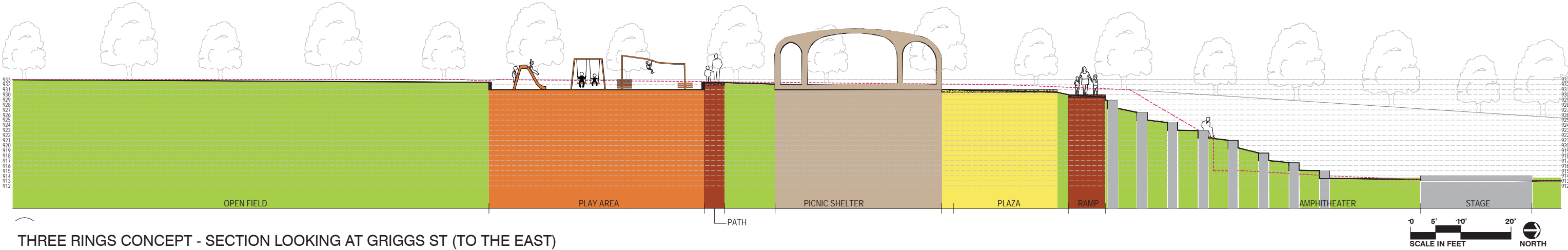
	Court/Field		Walking path		Art / sculpture
	Open Field		Plaza		Water feature
	Playground		Slope		Pavilion
			Garden or planted buffer area		



OPTION 2 - THREE RINGS



- | | | |
|-------------|---------------|-------------------------------|
| Court/Field | Walking path | Pavilion |
| Open Field | Plaza | Garden or planted buffer area |
| Playground | Water feature | Line of existing conditions |



THREE RINGS CONCEPT - SECTION LOOKING AT GRIGGS ST (TO THE EAST)

OPTION 3: HILL FOR PLAY

CONCEPT DESCRIPTION

- **Playground on hill**, similar to group 4
- Stormwater interacts with playground edge
- Path intersects with amphitheater (some seating, some walls)
- Plazas where path and amphitheater meet
- Fitness and basketball moved further from play area, **create a draw to the south part** of the park
- Plaza connects HSRA and access to GPHS
- **Art at top of amphitheater** like groups 4 + 5

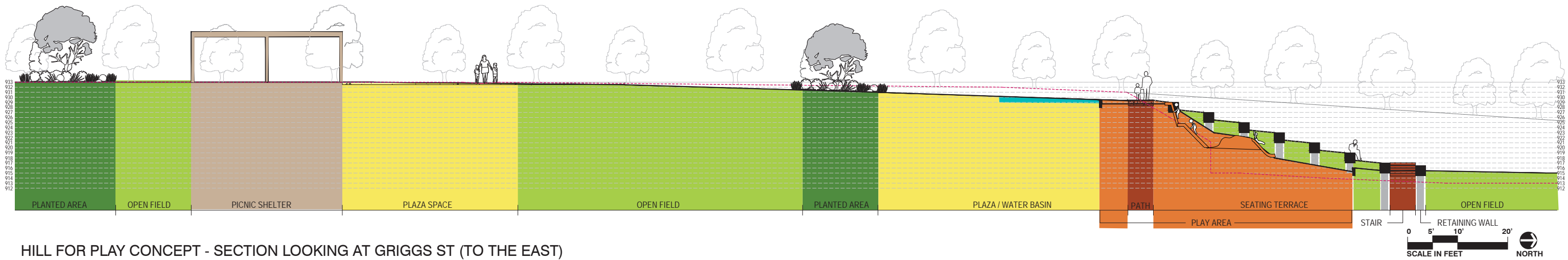


June 6, 2018 -- 14

OPTION 3: HILL FOR PLAY



- Court/Field
- Open Field
- Playground
- Walking path
- Plaza
- Water feature
- Pavilion
- Garden or planted buffer area
- Line of existing conditions



HILL FOR PLAY CONCEPT - SECTION LOOKING AT GRIGGS ST (TO THE EAST)

PARK DESIGN PROCESS

STEP ONE - ARRANGE LARGE PARK PARTS (PROGRAM)

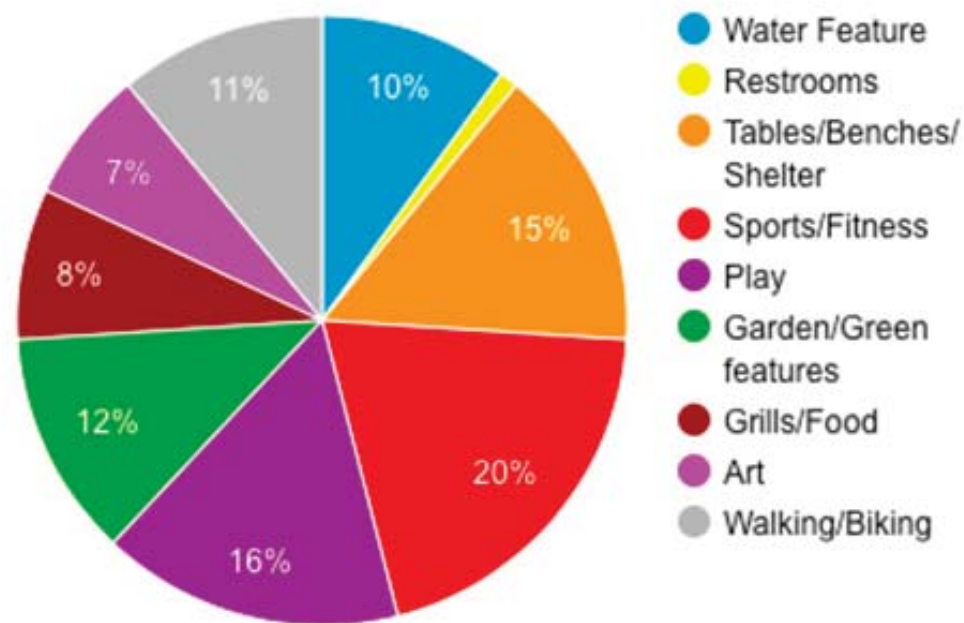
We are deciding how the big program areas fit together within Midway Peace Park (MPP).

Large parts include:

Sports/fitness (20%)
Play (16%)
Pavilion/gathering area (15%)
Open lawn areas, garden/planted areas (12%)
Walking paths (11%)
Water feature/stormwater (10%)
Grills/Food (8%)
Art (7%)
Amphitheater

[Does this order reflect what you want in the park?](#)

Desired Park Amenities



TODAY WE WILL:

Confirm order of priorities for large park parts
Indicate your preferred concept using stickers
Comment on concepts using post-its
Use stickers to indicate amenity style preferences

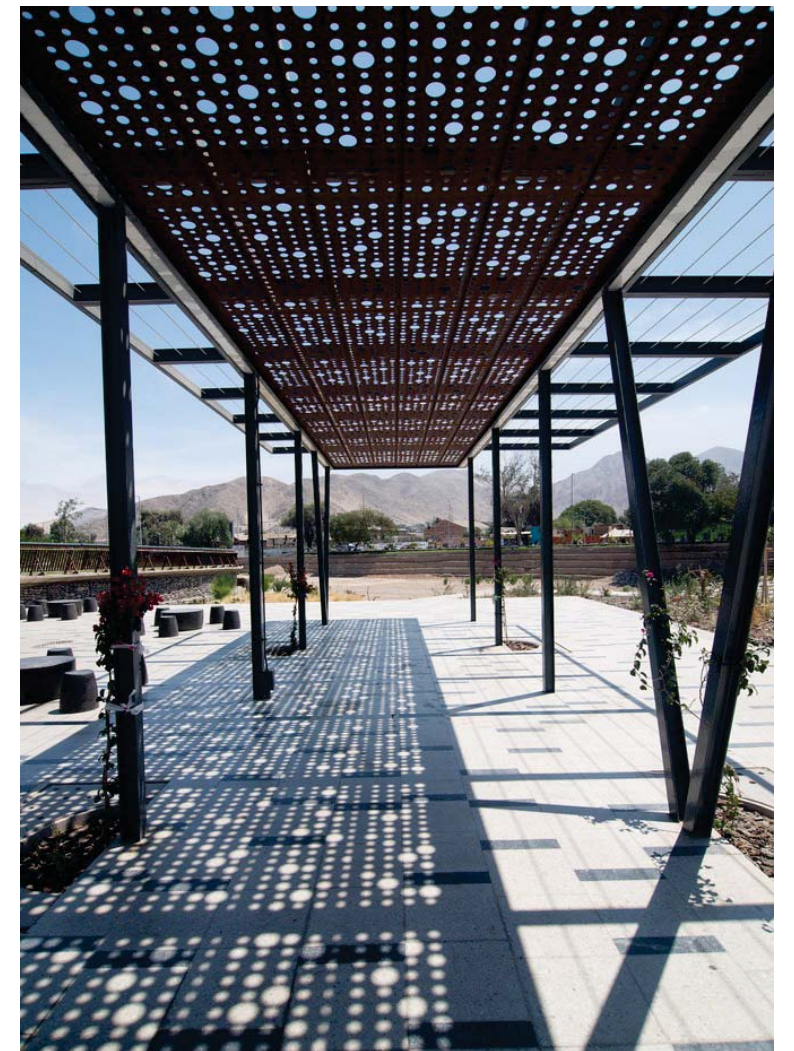
STEP TWO - LOCATIONS FOR SMALL AMENITIES

Where we put the large parts influences the location of smaller parts. This step will happen as the design evolves.

Small parts include:

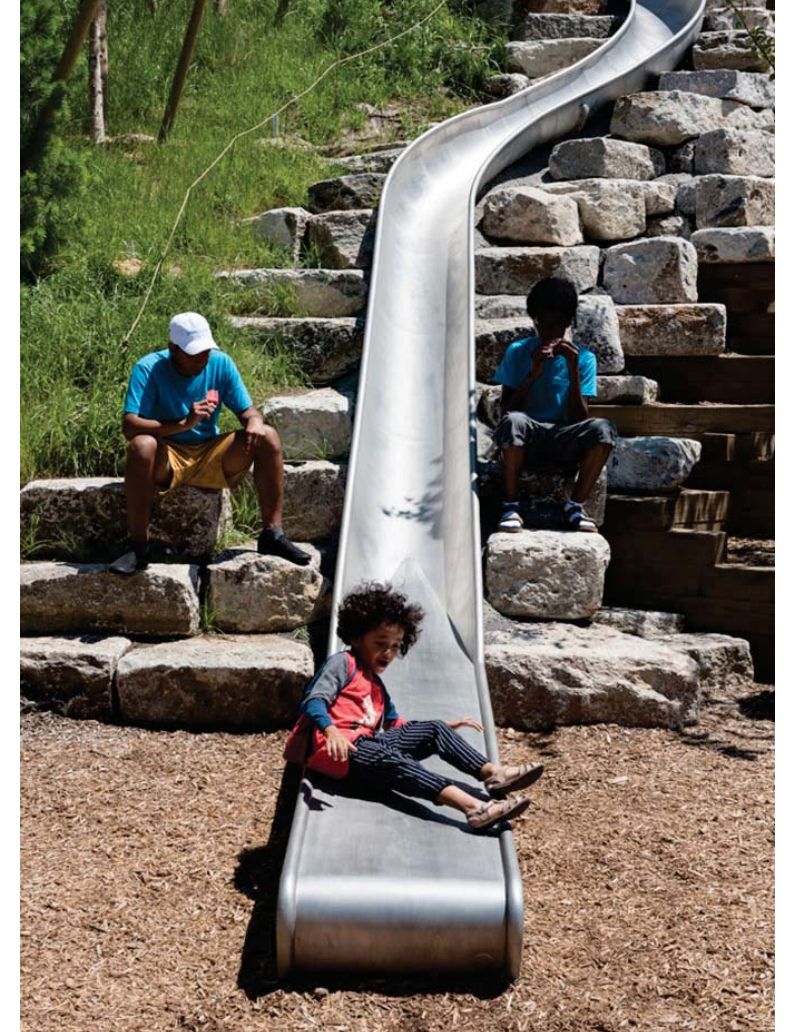
Drinking fountain
Lighting
Benches
Picnic tables
BBQ grills
Trees (required)
Bike racks (required)
Signage (required)

PAVILION AMENITIES



June 6, 2018 -- 17

ACTIVE PLAY AMENITIES - PLAYGROUND



June 6, 2018 -- 18

ARTISTIC AMENITIES



SCULPTURE: GITA GHEI



SCULPTURE: JAMES BRENNER

PLAY AMENITIES & SPACES

ACTIVE



PASSIVE



PLANTED AREA/GARDEN STYLE

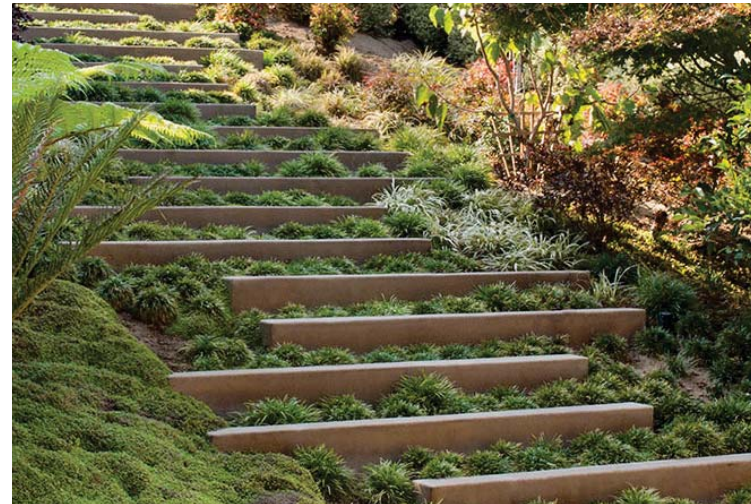
ALONG PATH



PLANTED AREA



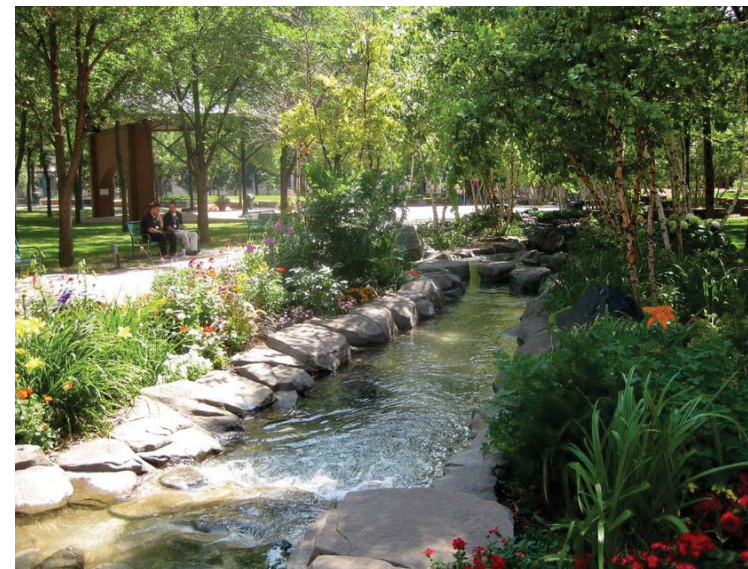
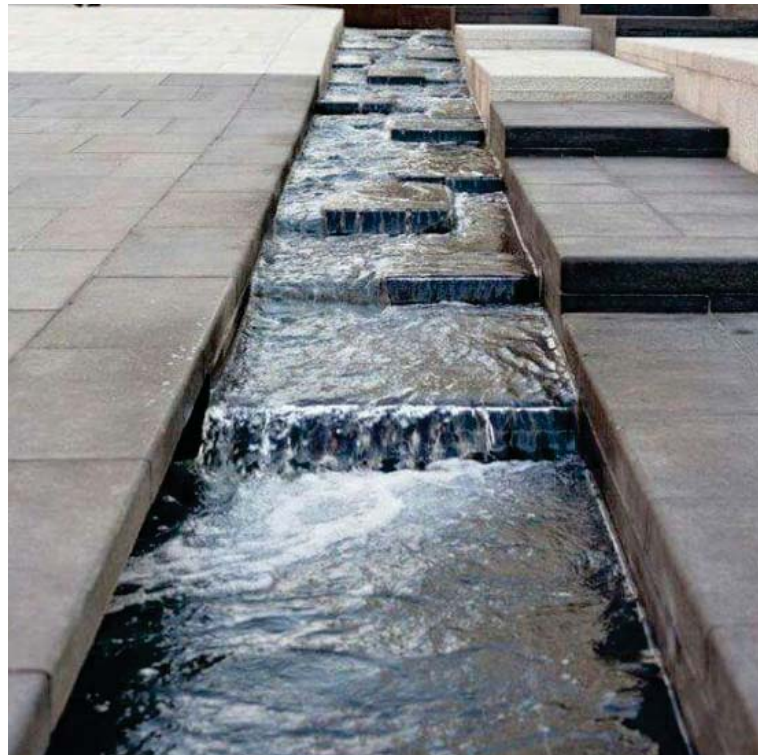
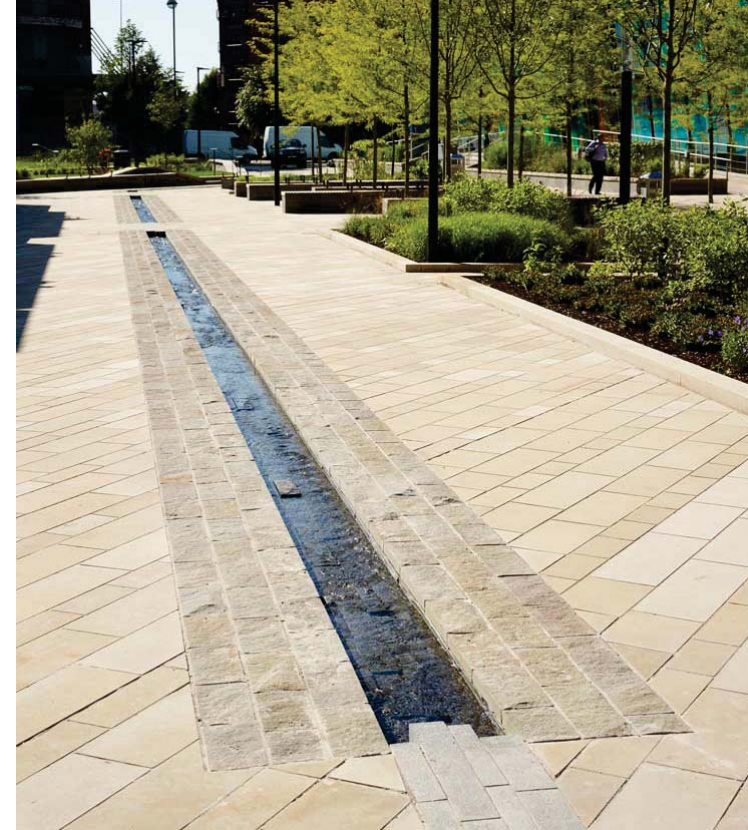
ON SLOPE



GARDEN



STORMWATER AMENITIES



NEXT STEPS AND SCHEDULE

HAMLIN MIDWAY ELDERS ICE CREAM SOCIAL

JUNE 26, 2018

6:30 - 8:00 PM

Hamline Methodist Church

LEXINGTON HAMLIN COMMUNITY COUNCIL ICE CREAM SOCIAL - JULY 22, 2018

1:00 - 3:00 PM

Hamline-Hague Tot Lot

Middle parcel will be open through the summer!

OPEN HOUSE - JULY 2018

Design concept: grading, layout, materials

Cost estimate with engineering input

POTENTIAL ARTIST CALL FALL 2018

CONSTRUCTION BEGINS SPRING 2019

PARK CONSTRUCTION COMPLETE IN LATE 2019

QUESTIONS?

THANK YOU!