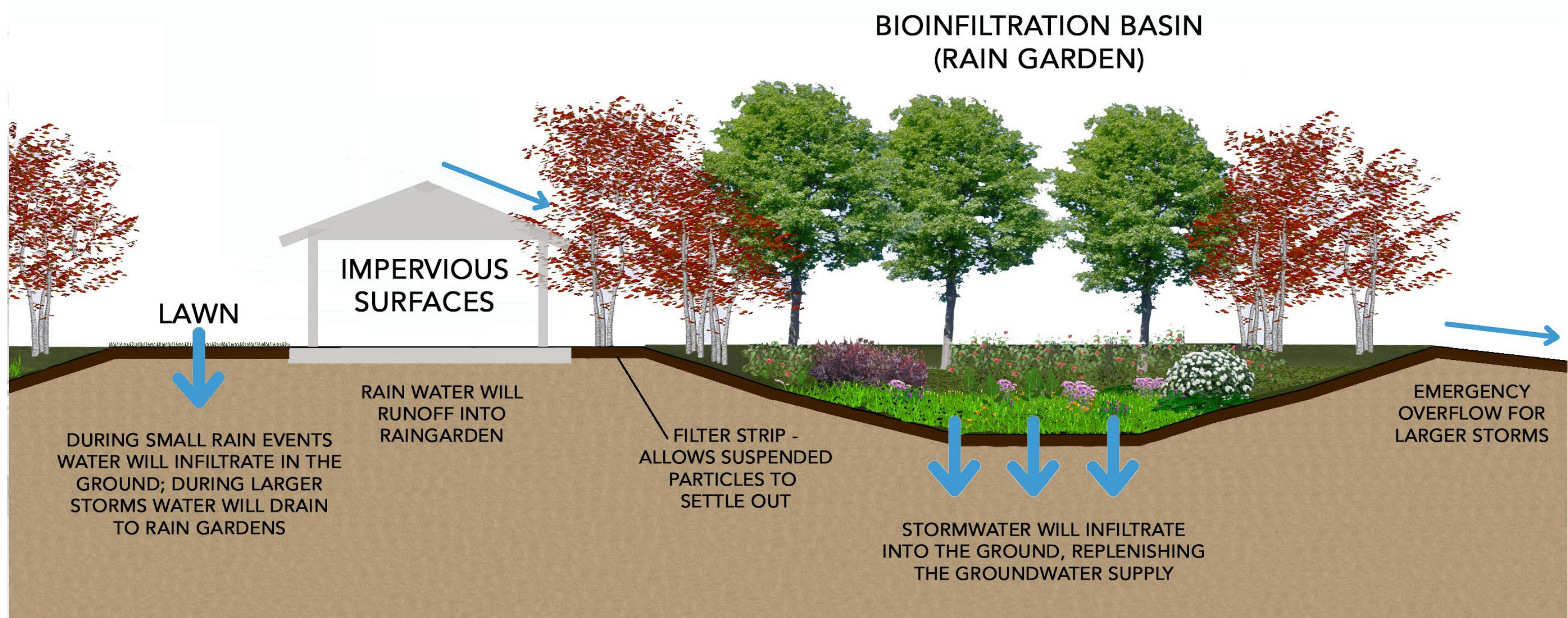
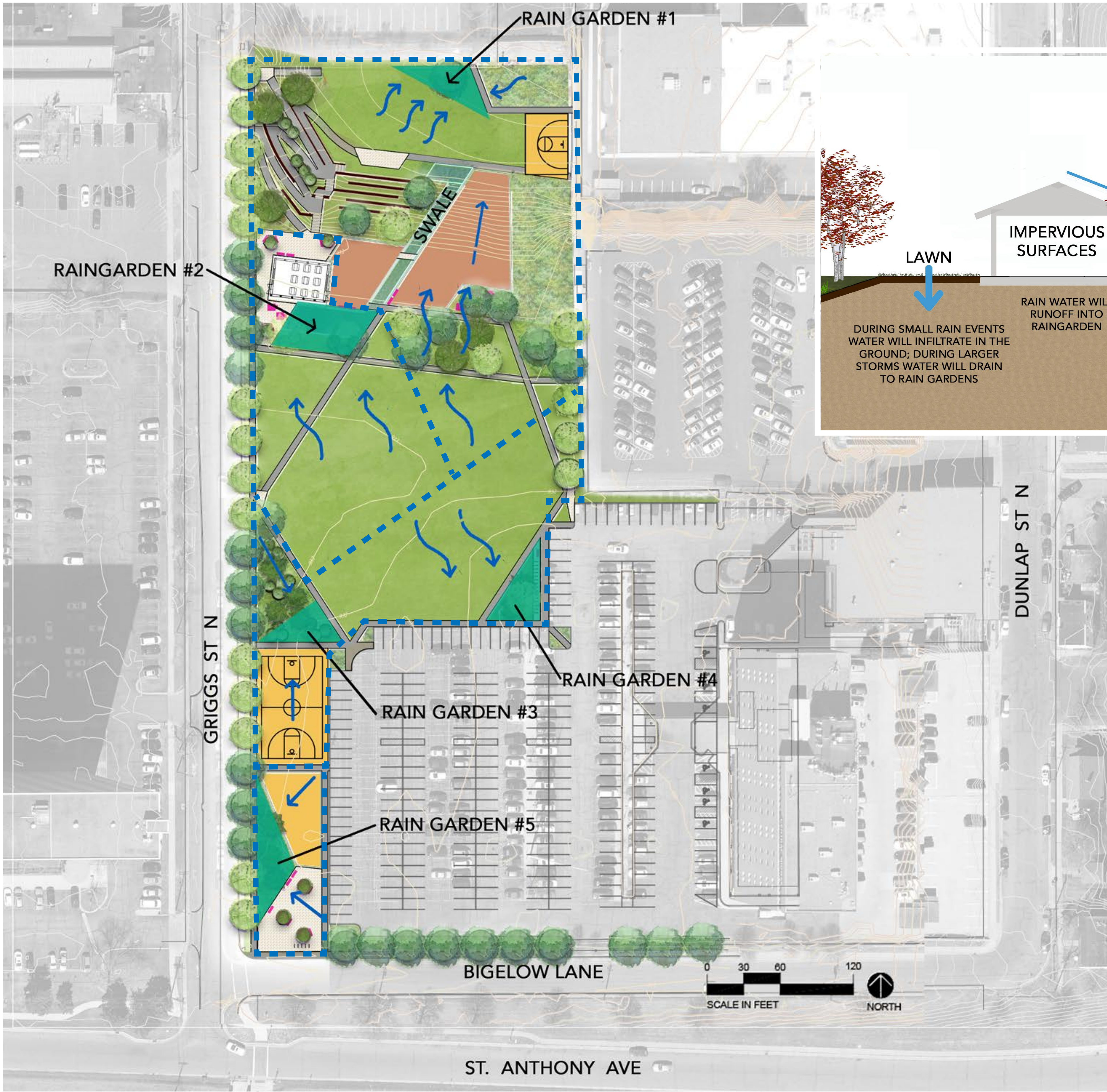


STORM WATER DESIGN CONCEPT #1



THE RAINGARDENS INFILTRATE WATER INTO THE GROUND. AS THE WATER GOES THROUGH THE SOIL, CHEMICAL, BIOLOGICAL AND PHYSICAL PROCESSES REMOVE POLLUTANTS FROM THE WATER.

THE RAIN GARDENS AT THIS PARK WILL CAPTURE **56,000** GALLONS OF WATER.

THAT IS EQUIVALENT TO TWO SWIMMING POOLS FULL OF WATER.

STORM WATER DESIGN CONCEPT #2



STORMWATER CHANNEL



BUILT PROJECT RAIN GARDEN



PLAY AREA WITH BRIDGE

September 29, 2018 -- 2