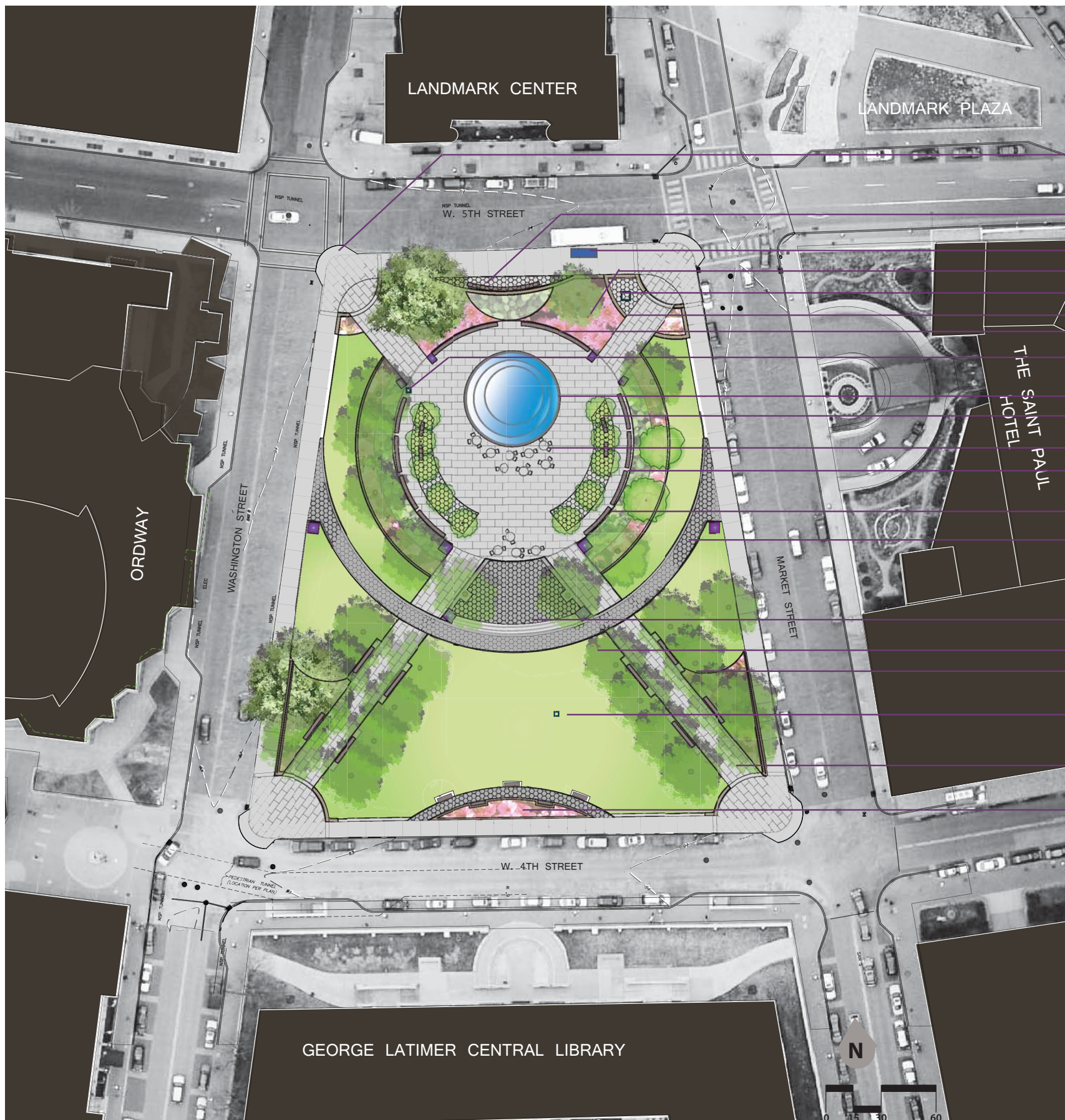


RICE PARK REVITALIZATION CONCEPT PLAN

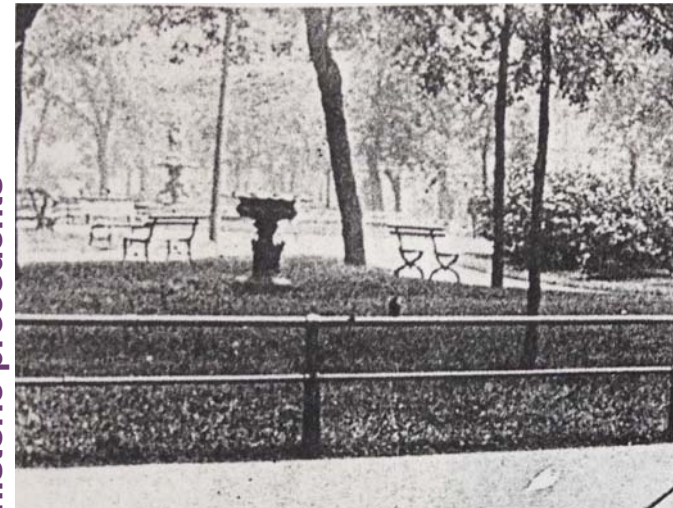
The concept plan activates Rice Park by adding a central space for activities and gatherings. The park is visually open and offers a new experience to Rice park with a new pathway, colorful display gardens, flexible seating options, and engaging light features.



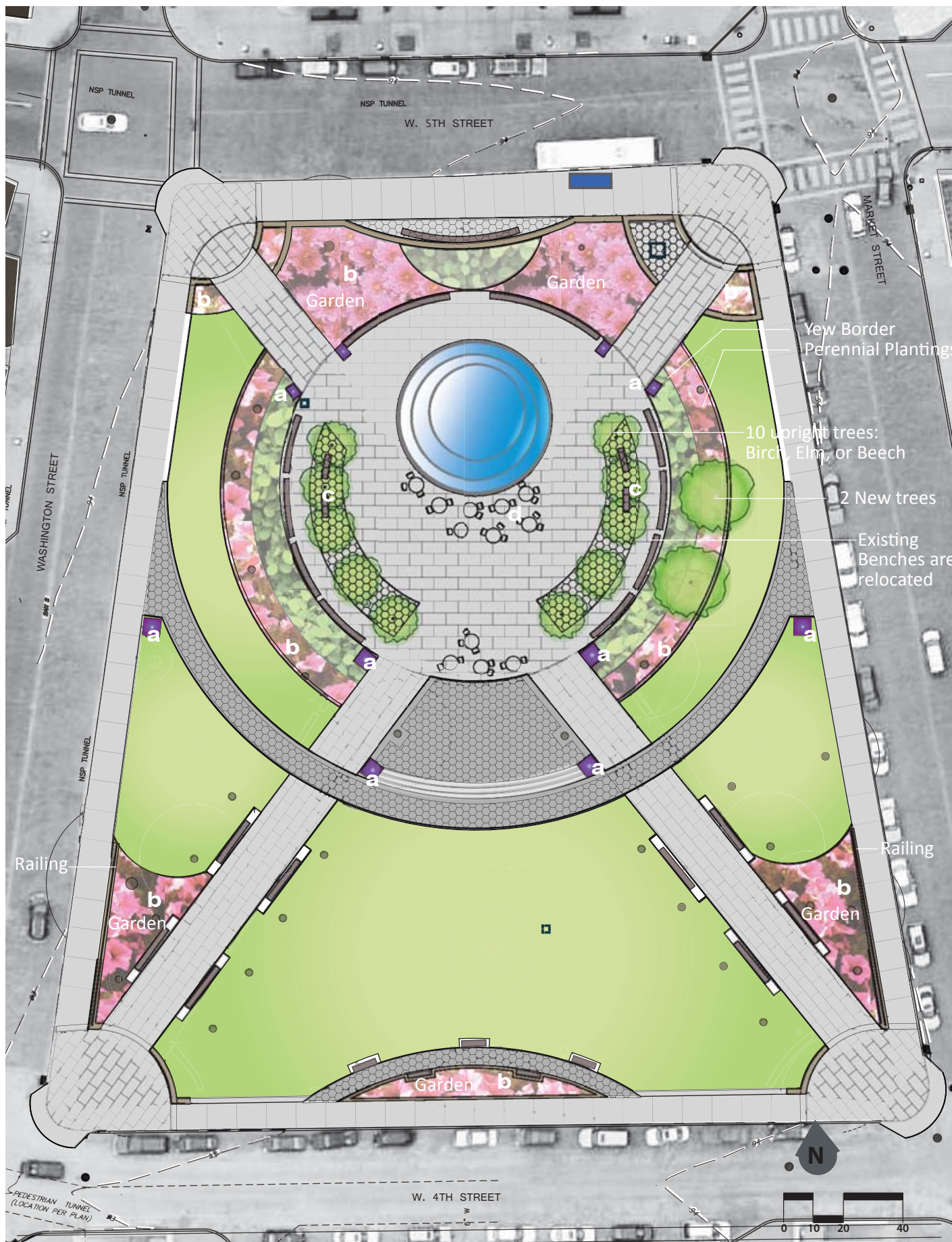
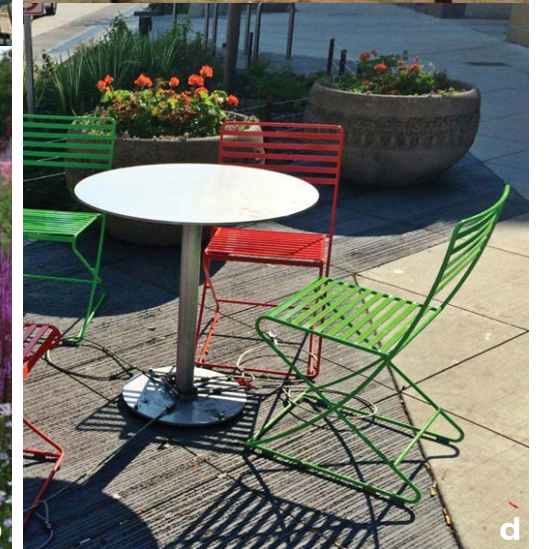
- Bumpouts at all 4 corners for traffic calming and pedestrian crossings-
(pending further discussion with Public Works and Historic Preservation Specialist)
 - Reconstructed seatwall
 - Bus stop
 - Garden area is expanded
 - Fitzgerald sculpture remains in place
 - Entry space at all four corners reconfigured and defined with new seatwalls
 - Perimeter seating offset into garden area
 - New drinking fountain
 - Existing fountain remains
 - New trees add shade to the open plaza
 - Moveable chairs and tables offer flexible seating options
 - Existing Benches remain
 - Yew plantings are bordered by colorful flower displays around the perimeter of plaza
 - New secondary pathway (10') from Market and Washington
 - Central space can be programmed for concerts, weddings, small gatherings, performances
 - Open lawn area with new irrigation and reinforced turf edge
 - Existing linden allees
 - Holiday tree location
 - Paving is reduced by narrowing diagonal pathways
 - Raised garden bed for flower display by the Saint Paul Garden Club
- Other elements:
- Charles Schulz Peanuts sculptures will be relocated in the southeast perennial bed
 - Kiosks at entry corners will remain at corners
 - Signage plaques and historic monuments will be integrated into the entrance walls and entry garden beds
 - Existing utility boxes and fountain pump are proposed to be relocated in an underground vault

PLANTING AND FURNISHINGS

historic precedents



proposed



KEY



PERENNIAL PLANTING WITH LOW GROWING SHRUBS



HEDGE OF YEWS OR OTHER EVERGREEN SHRUB



LAWN



NEW TREE





view e - view from 5th Street and Washington towards interior of Rice Park



view d - view of south lawn with reconfigured gardens and an open view to Landmark Center



view f - view from Market Street into Rice Park

PERSPECTIVE GRAPHICS **RICE PARK**