

VISION PLAN FOR HIGHLAND 9-HOLE GOLF COURSE



CITY OF SAINT PAUL
Department of Parks & Recreation
Design & Construction Division
JANUARY 2020



PROJECT OVERVIEW

Project Goals

- Long-term visioning exercise
- Purpose is to re-evaluate existing land use for modern needs
- Develop a preliminary concept plan and cost estimate to consider alternative land uses
- Preliminary study only. Does not account for an exhaustive economic or traffic analysis
- No additional funding for design or construction

Outreach

- Email
- Social Media
- Villager & Pioneer Press
- Highland Aquatic Center Pop-up Meeting
- Flyers (Rec Center & homeowners along Edgcumbe)

Schedule

- | | |
|----------------------------|--------------|
| • Pop-up Meeting | Aug 31, 2018 |
| • Meeting #1 | Oct 1, 2018 |
| • Analysis/Concept Design | October 2018 |
| • High School Presentation | Nov 8, 2018 |
| • Meeting #2 | Nov 19, 2018 |
| • Meeting #3 | Dec 11, 2019 |
| • Parks Commission | January 2020 |



DECISION FACTORS

Help make Saint Paul the most Livable City in America by facilitating the creation of ...

OUR GOALS

 **ACTIVE LIFESTYLES**

 **VIBRANT PLACES**

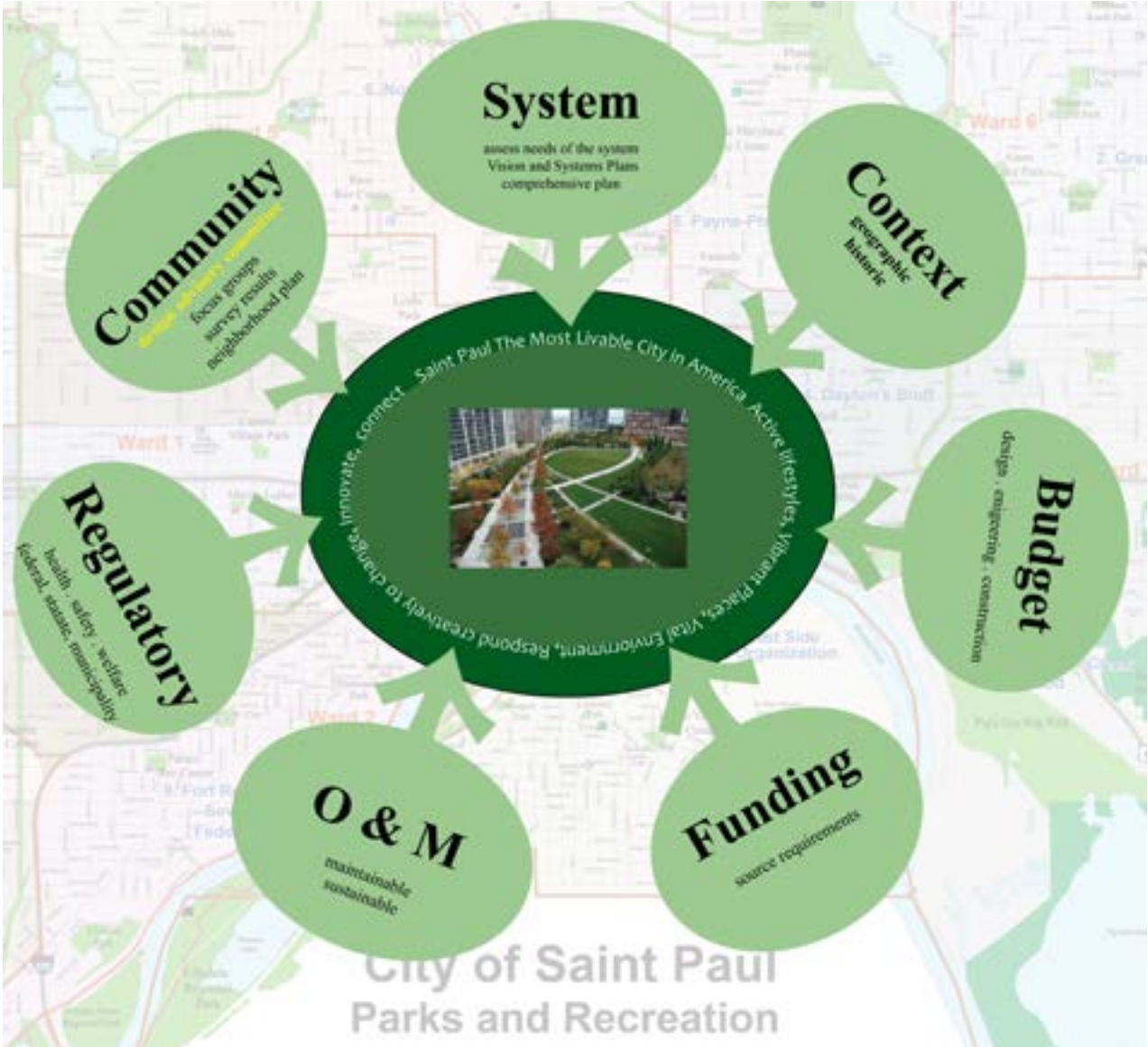
 **A VITAL ENVIRONMENT**

through parks and recreation that...

 **RESPONDS CREATIVELY TO CHANGE**

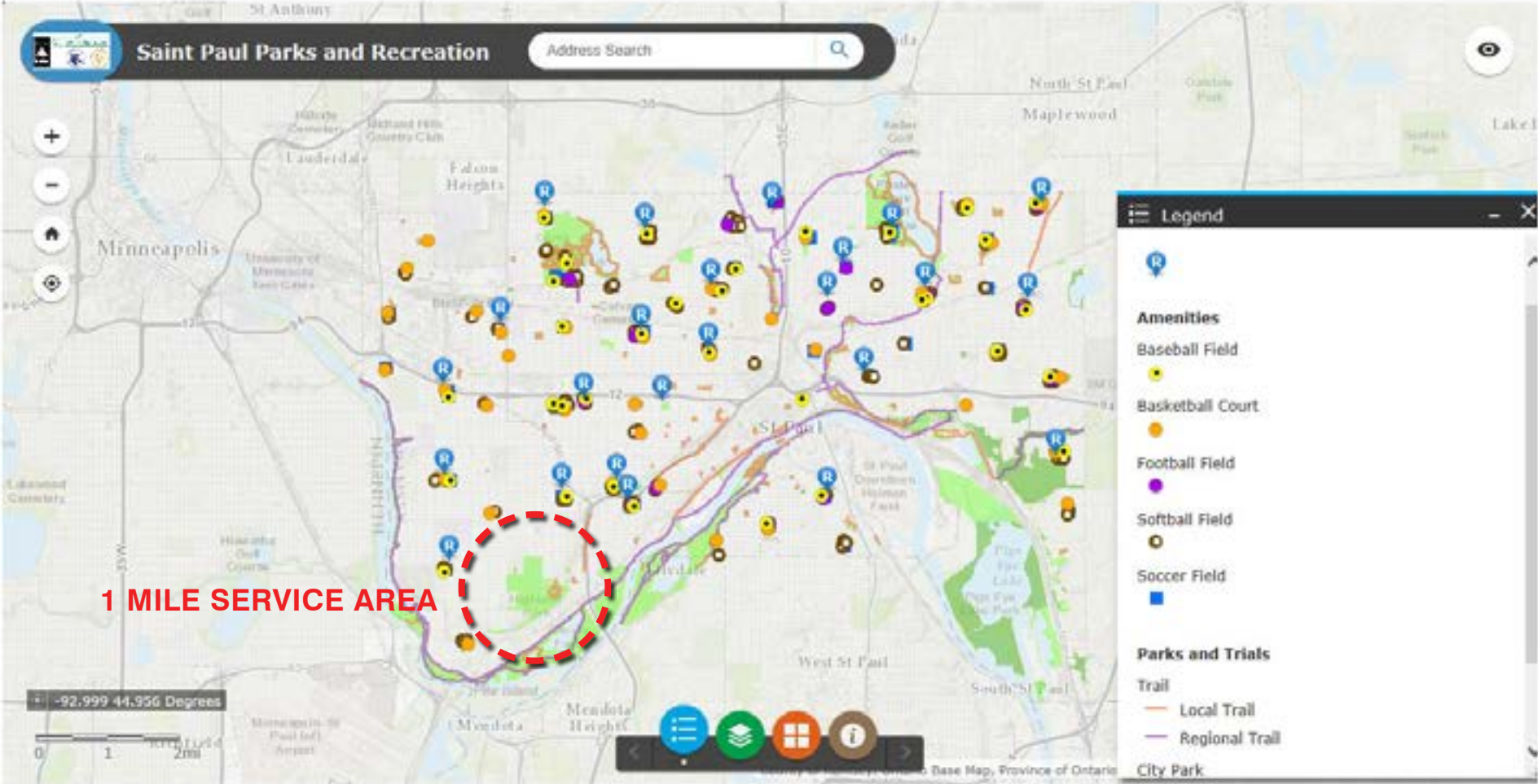
 **INNOVATES WITH EVERY DECISION**

 **CONNECTS THE ENTIRE CITY**



HIGHLAND PARK AMENITIES

Parks and Recreation Amenities Map

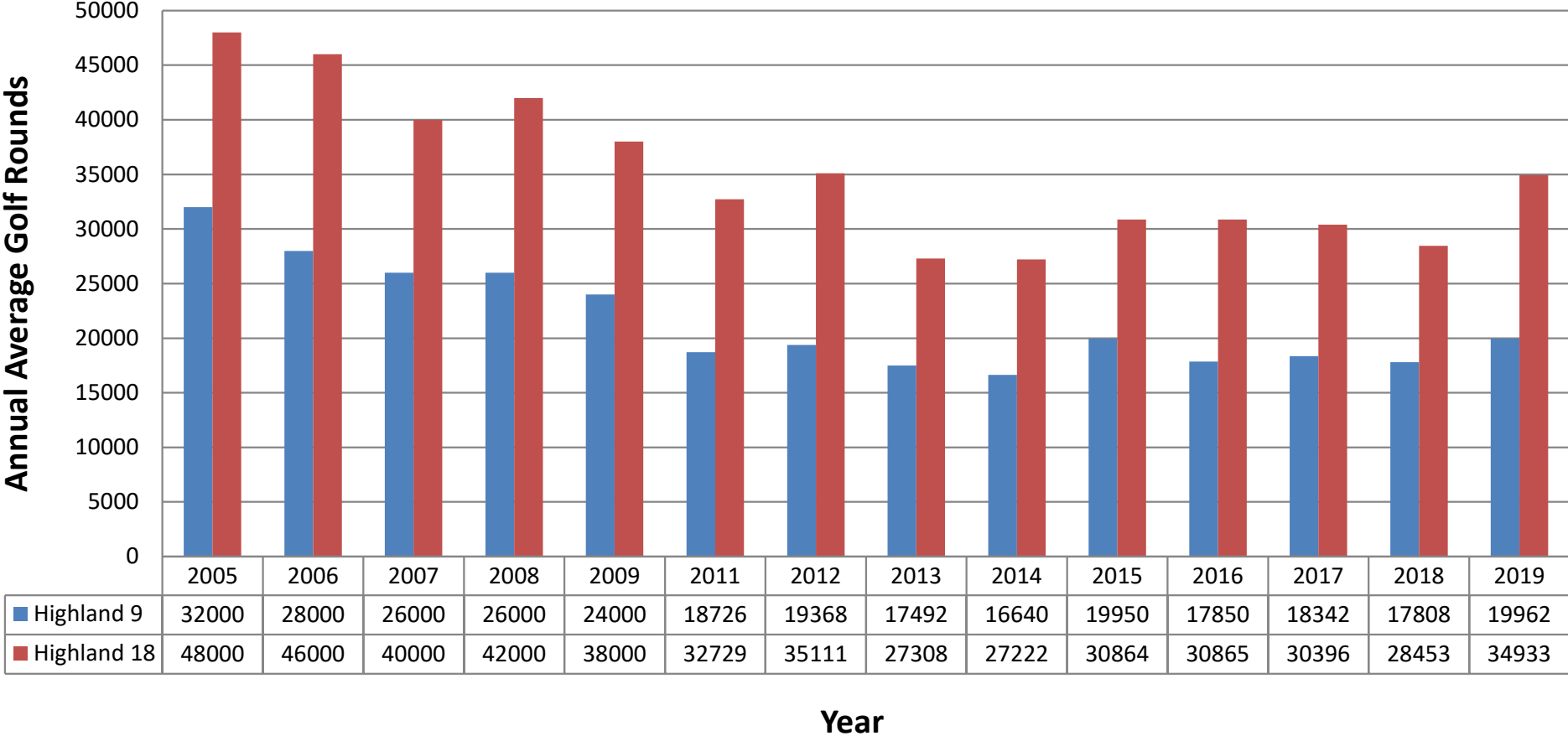


SYSTEM PLAN NEEDS

Table 5.3

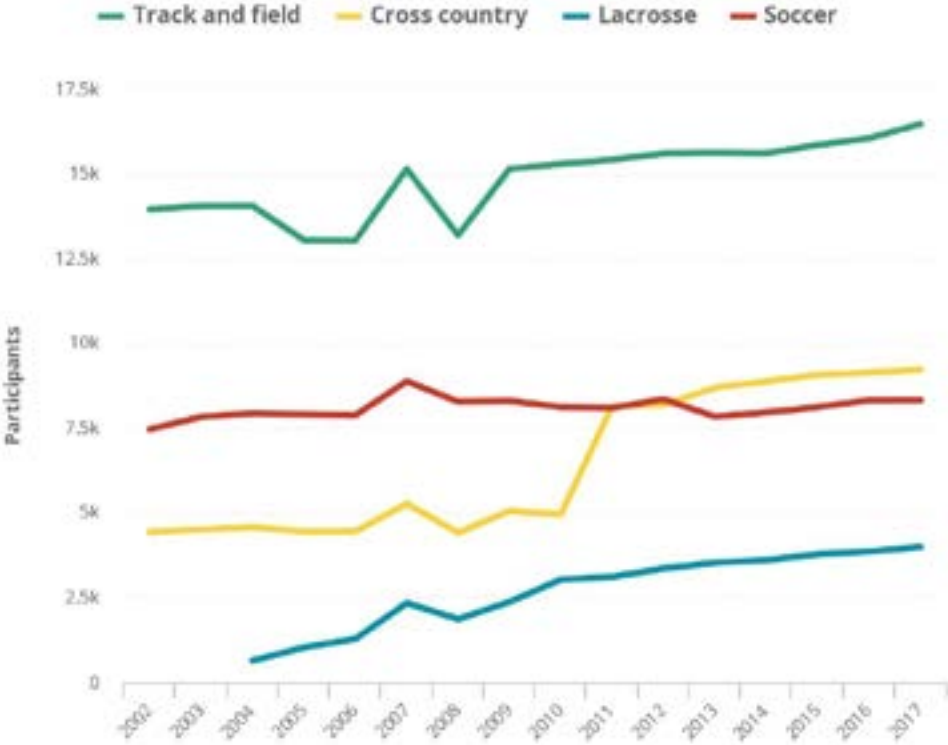
Facility	Minimum Service Areas	Location	Minimum Number Needed (assumes most efficient distribution)	Current Number of Facilities (Level of Service)	Excess or Deficits	Facility Supply Notes
<p>Field Sports: Field Hockey Lacrosse Soccer (full size) Football</p> <p>Youth Soccer (smaller)</p>	<p>1 mile service radius Soccer with groups of four or more fields in each quadrant, plus other multi-use turf field areas</p> <p>½ -1 mile service radius</p>	<p>Increasing popularity of turf field sports. Neighborhood and community parks. Youth soccer on smaller fields adjacent to schools or in neighborhood parks</p>	<p>40 youth</p> <p>25 full size soccer</p> <p>25 full size other turf fields Min. 28 dedicated full size lighted fields.</p>	<p>Soccer : 47 fields total Approx 29 youth Approx 18 full size</p> <p>Football: 24 Many football/ soccer fields are the same space now.</p>	<p>- 8 full size</p> <p>- 11 youth</p>	<p>There is a need for additional turf sports fields. Focus on creating high quality full sized fields, which can withstand more frequent use and can be split into two youth fields as needed. Opportunities exist to reconfigure marginal and lesser used ball fields into turf sports fields.</p>

HIGHLAND 9 GOLF COURSE TRENDS

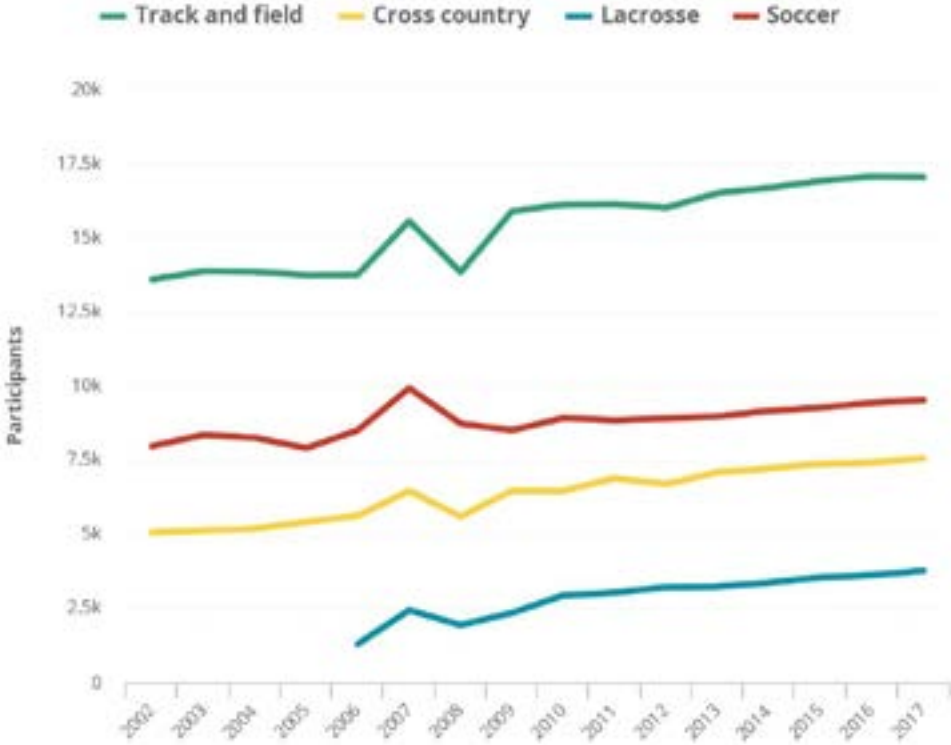


MN STATE HIGH SCHOOL RECREATION TRENDS

Girls increasing sports

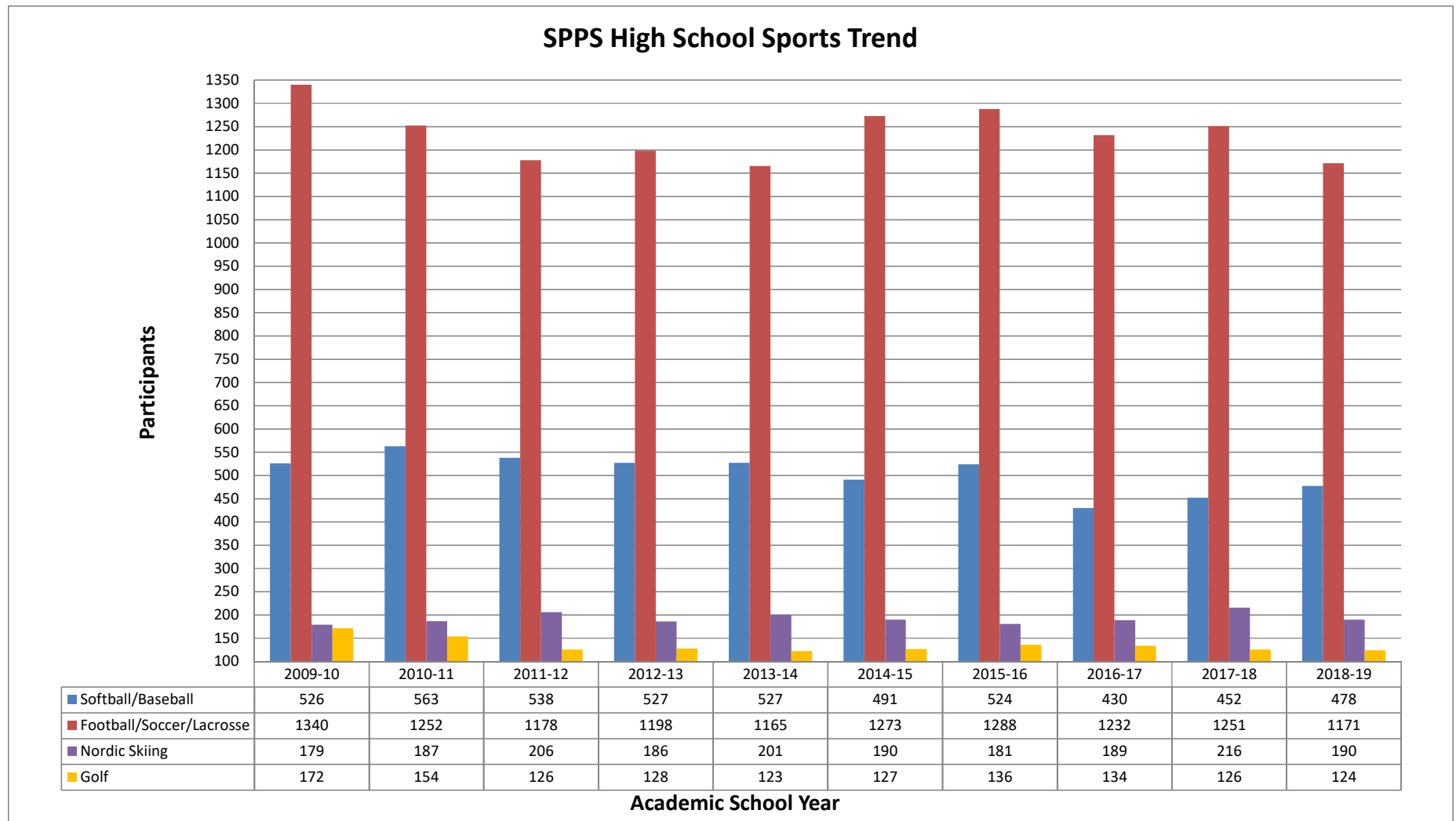


Boys increasing sports



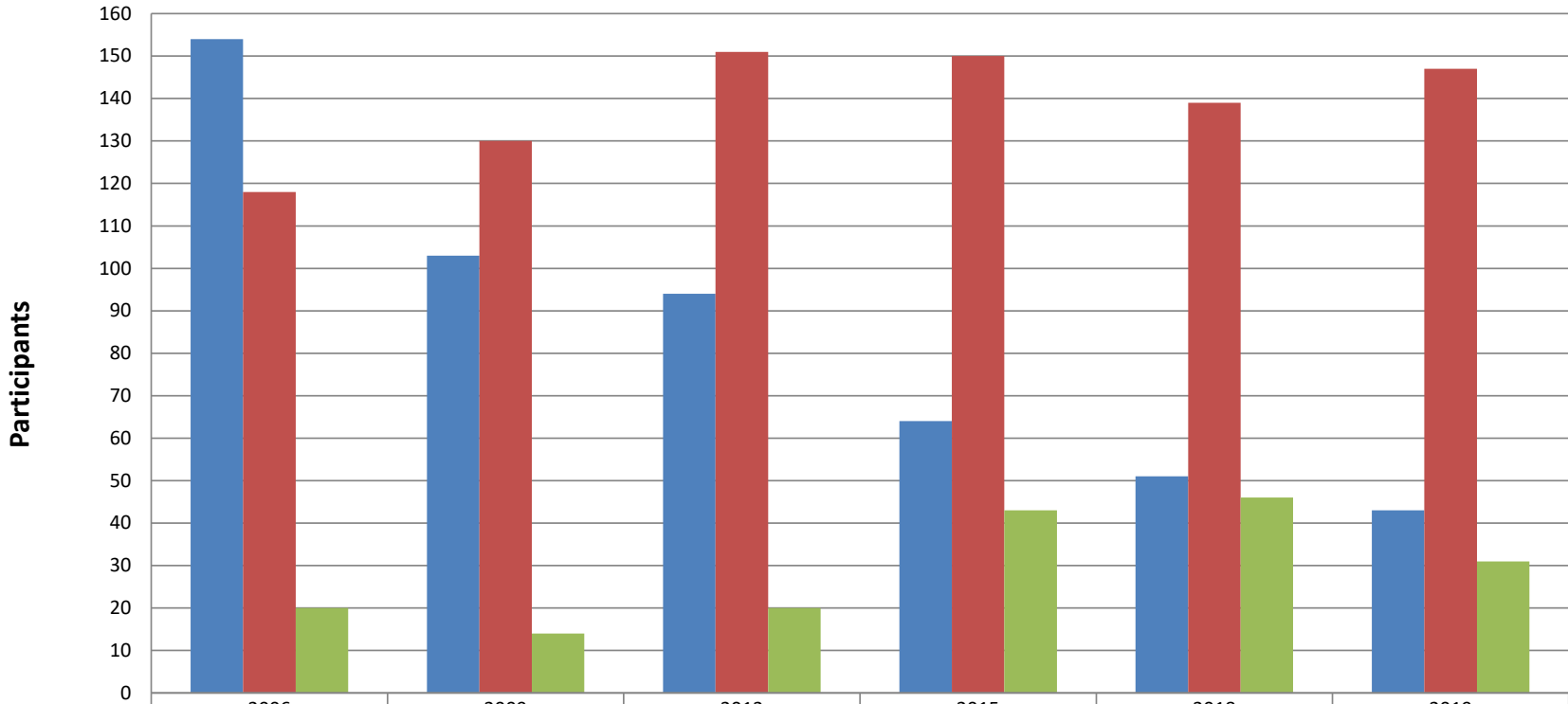
Source: National Federation of State High School Association

ST PAUL PUBLIC SCHOOLS RECREATION TRENDS



ST. PAUL MUNICIPAL RECREATION TRENDS

City of Saint Paul Municipal Sports Trend



■ Softball/Baseball	2006	2009	2012	2015	2018	2019
■ Football/Soccer/Lacrosse	154	103	94	64	51	43
■ Indoor Soccer	118	130	151	150	139	147
	20	14	20	43	46	31

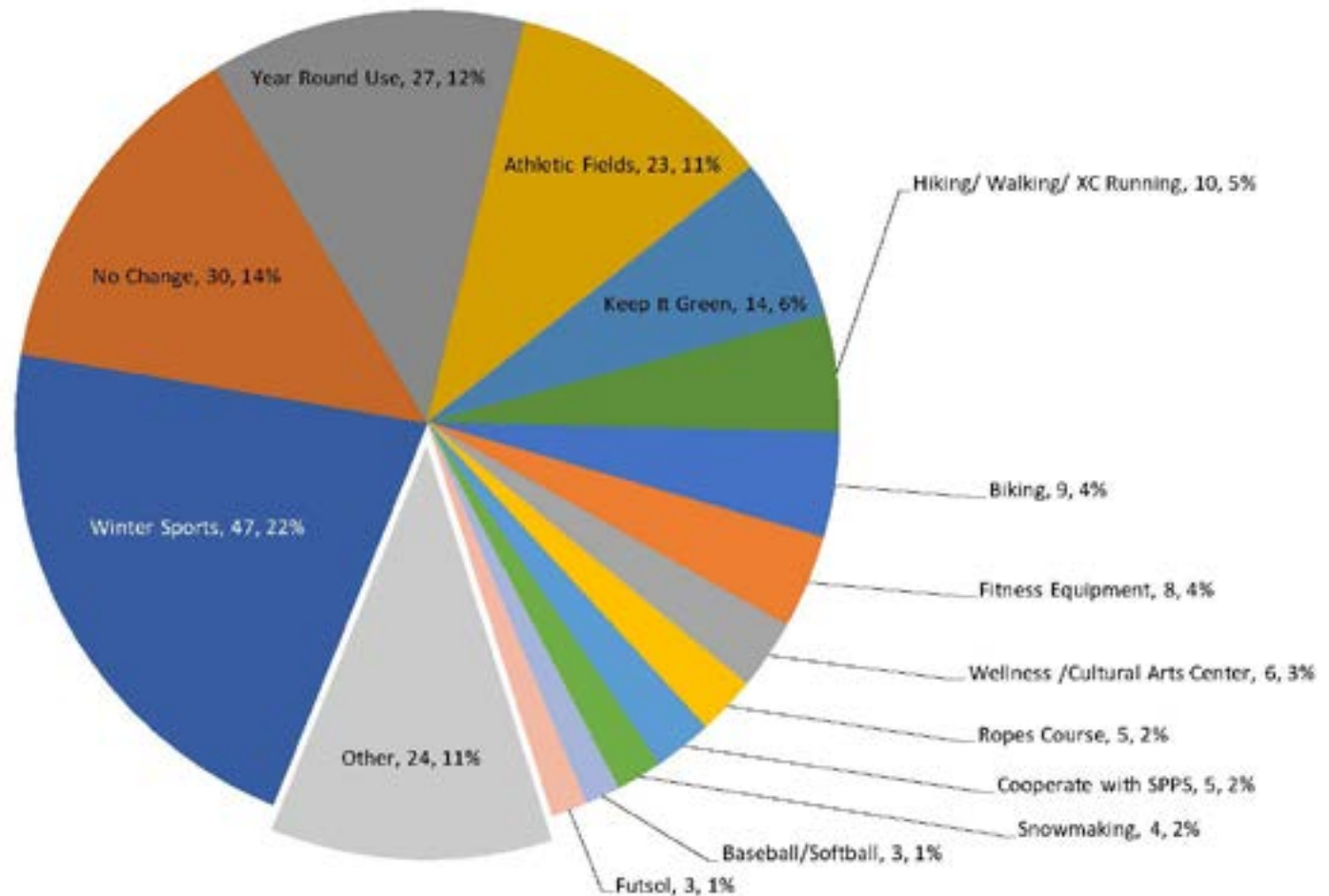
Year

COMMUNITY OUTREACH MEETING #1

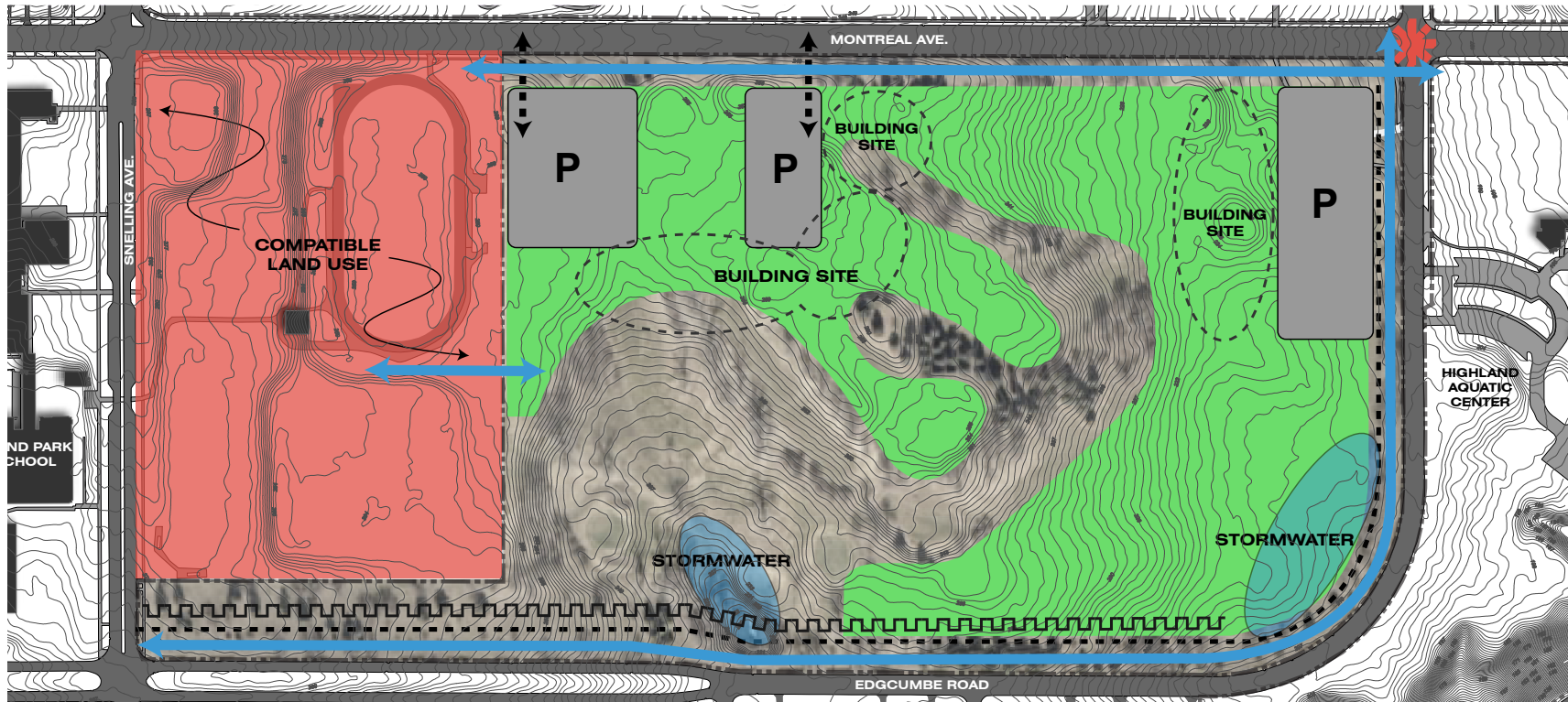
Top 5 Comments:

- Retain golf
- Retain cross-country skiing
- Incorporate recreation for aging population
- Keep it Green
- Incorporate multi-use fields/ diverse recreation amenities

Highland 9 Visioning Meeting #1 Comments



OPPORTUNITIES AND CONSTRAINTS



LEGEND:

-----	60' BUFFER		COMPATIBLE LAND USE		BUILDING LOCATION
←---→	DRIVE ACCESS		PARKING		STORMWATER
↔	PEDESTRIAN CIRCULATION		SUITABLE RECREATION SPACE		ENHANCED INTERSECTION
-----	RESIDENTIAL BUFFER				

Concept Assumptions

- Maintain 60' buffer around site
- Preserve tree groves where possible
- Provide centralized building to support field and restroom
- Parking and facilities away from residential homes
- Retaining walls required
- Internal trail/sidewalk connections
- Partner with SPPS to share and re-organize fields at H.S.
- Multi-use artificial turf fields (similar to Jimmy Lee Fields)
- Utilize fencing to delineate field spaces

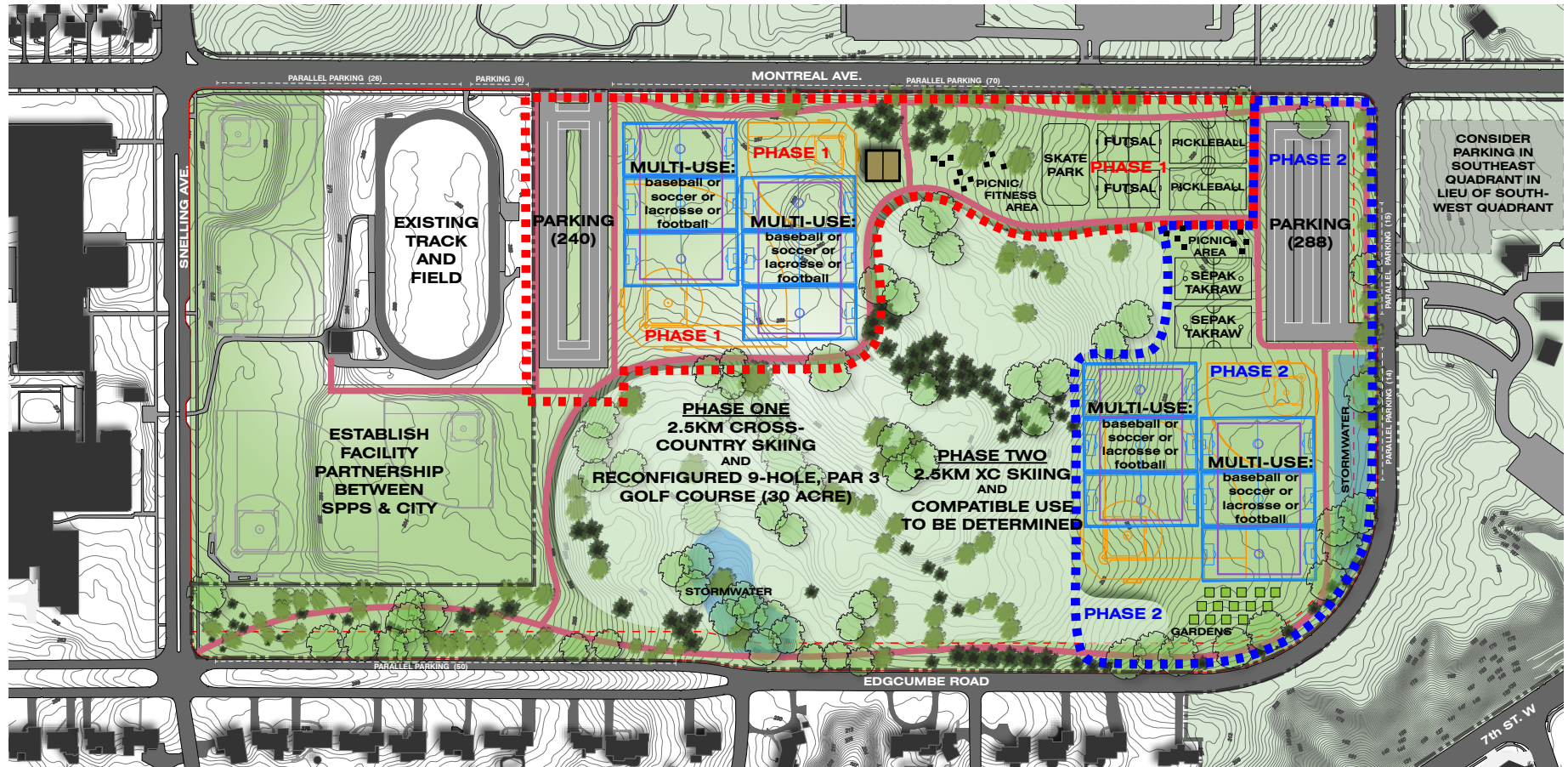
CONCEPTS



PUBLIC MEETING #2 COMMENTS

- Retain golf
- Retain cross-country skiing
- More diverse recreational amenities
- Preserve open space

PREFERRED CONCEPT: PHASES 1 & 2



Total Rec Services Added:

- (1) Skate Park
- (2) Sepak Takraw (Kato) courts
- (2) Pickleball only courts
- (2) Futsal courts
- (4) Artificial Turf Multi-use fields:
 - (2) youth baseball and
 - (2) high school baseball or
 - (12) youth soccer or
 - (4) full soccer or
 - (4) full lacrosse or
 - (4) full football
- 2.5 KM Cross Country Skiing

Parking:

Supply: 528 in lot,
180 on street

Total: 708
Demand (estimate):
315 for new fields
200 for high school
Total: 515 (193 extra)

Site Cost:

\$18 Million to \$22 million
(includes design fees,
survey, geotechnical report,
and construction administration)

Assumptions:

1. Maintain 60' buffer around site.
2. Re-organize 2.5 km cross-country skiing.
3. Preserve tree groves where possible.
4. Parking and recreation fields located away from residential homes.
5. Minimize retaining walls required.
6. Provide centralized building to support field, restroom & concessions.
7. Internal trail/sidewalk connections.
8. Partner with St Paul Public Schools to potentially share fields.
9. Utilize fencing to delineate between field space.

Legend:

Recreation
Fields



Existing Tree



Support Building



Pathway



Road/Parking



NORTH

1" = 100'
0' 100' 200'

Garden



Picnic Tables



NEXT STEPS

Parks & Recreation:

- Visioning study will be complete after feedback from this meeting.
- Parks and Rec staff to complete document that summarizes visioning process.
- No funding for additional planning, design or construction: State Bond, CIB, partnership with SPPS
- Pursue schematic design funding (Capital Improvement Budget): \$300K
- Total design funding needed: \$1M+

Website - <http://www.stpaul.gov/Highland9>

Contact - brett.hussong@ci.stpaul.mn.us