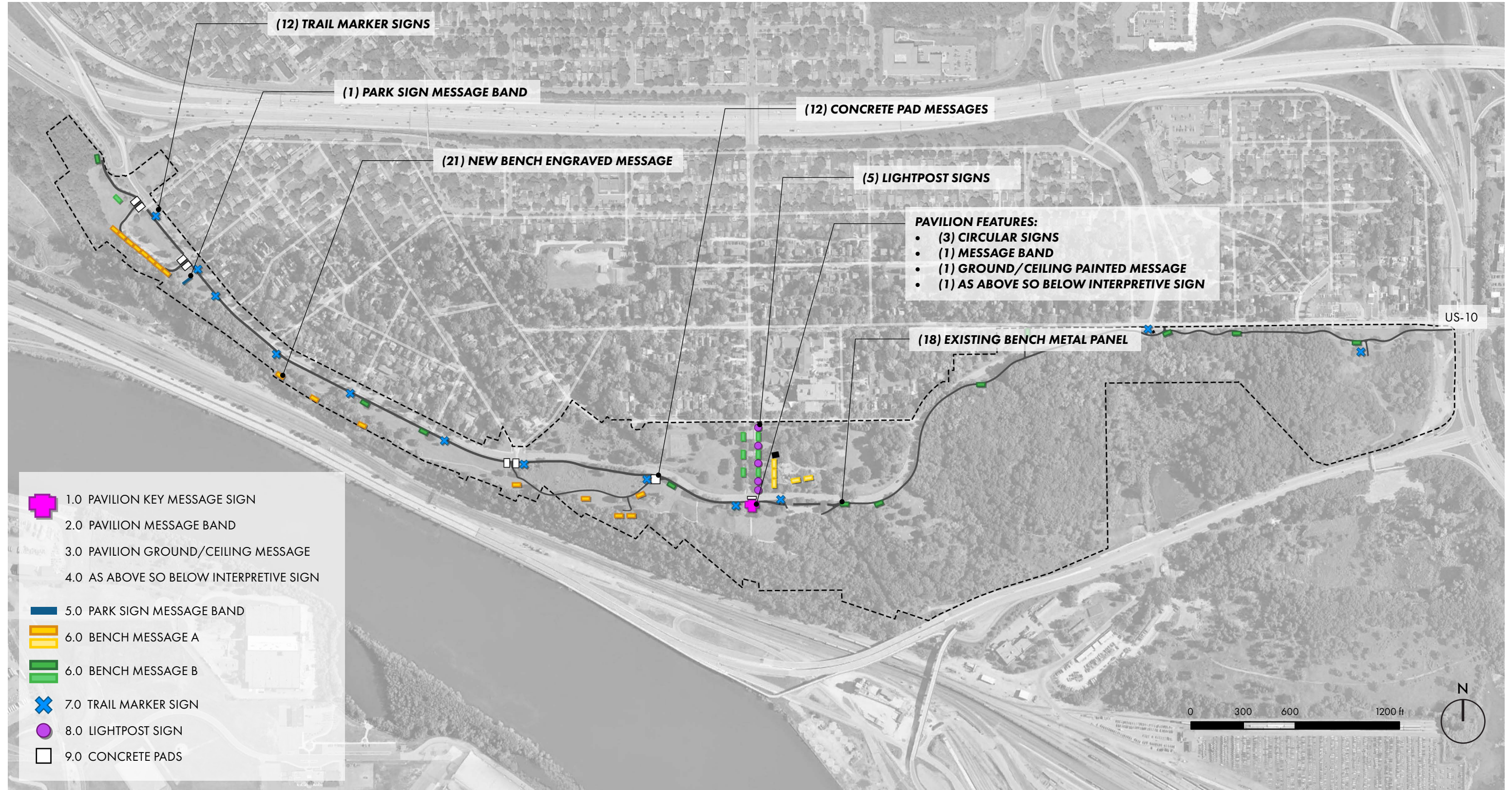


IMMEDIATE ACKNOWLEDGMENT MESSAGING PLAN



1.0 PAVILION KEY MESSAGE SIGN

Sign: 30" wide

Title text: 2" (visible from 50')

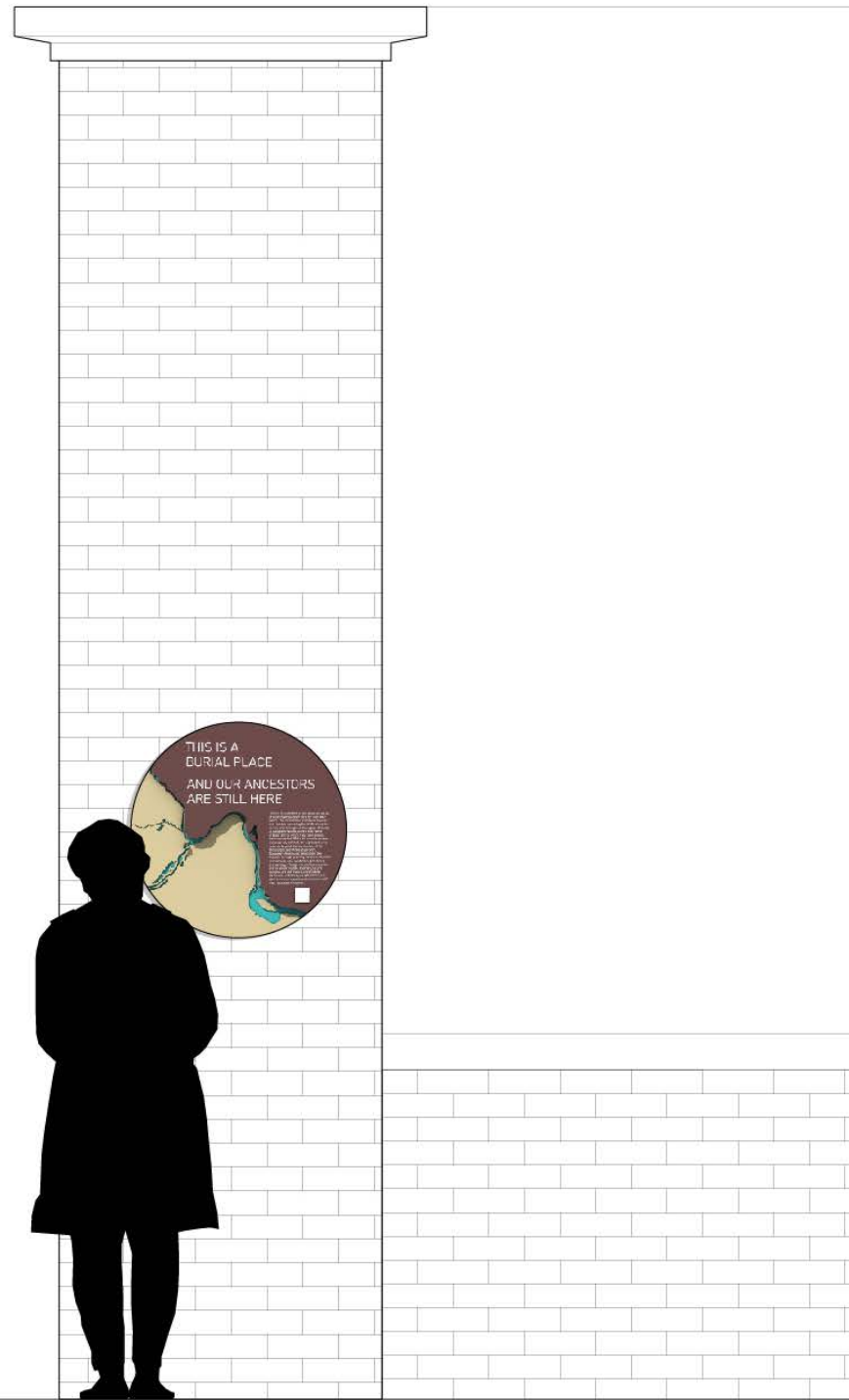
Paragraph text: 5/16" (visible from 7')

CURRENT TEXT:

This is a burial place and our ancestors are still here.

You are in a cemetery. It is a sacred burial ground that has been here for thousands of years. The sacred land continues beyond this location spanning the bluffs along the rivers, and throughout the region. Minisota [Mnisota] is Dakota homeland, to which Dakota people have always been connected. While its boundaries are not precisely defined, the significant area extends beyond the confluence of the Mississippi and Minnesota Rivers. Settlers desecrated the mounds through plowing, road construction, recreational use, vandalism, greed, and archaeology. Though most of the mounds are no longer visible, their ancestor's remains are still here. Living Dakota, Ho-Chunk, and loway people continue to visit to honor, respect, and commune with their deceased ancestors.

Dakota language has been translated by Dakhóta íápi Okhódakičhiye (DIO) in the University of Minnesota Orthography.



Wood



Blue Wood Stain



Blackened Steel

2.0 PAVILION MESSAGE BAND

Sign: 15'-7" wide

Text Height: 2.25" (visible from 55')



CURRENT TEXT:

Táku Wakhán Thípi - this is a burial place and our ancestors are still here.



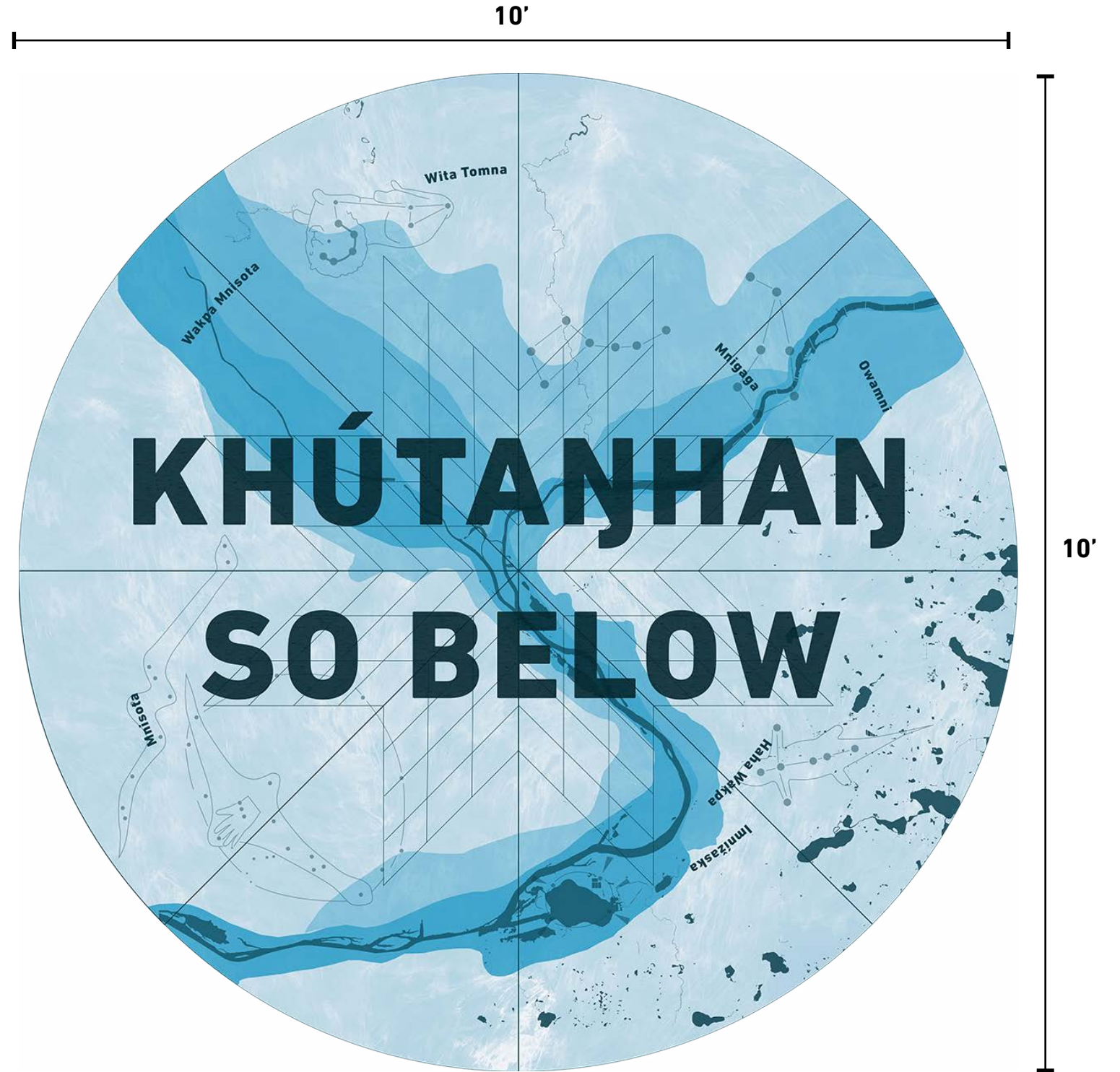
3.0 PAVILION GROUND/CEILING MESSAGE

CURRENT TEXT:
Wanjkátaŋhan as above / Khútaŋhan so below



CEILING

constellations / star quilt / milky way

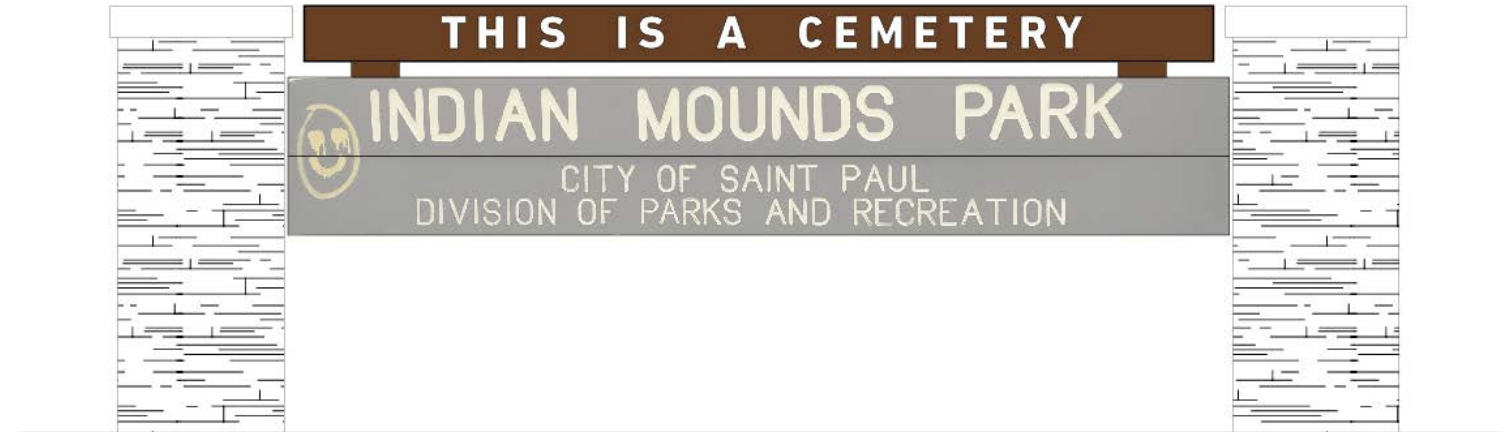


FLOOR

bdote / star quilt / Dakota placenames

5.0 PARK SIGN MESSAGE BAND

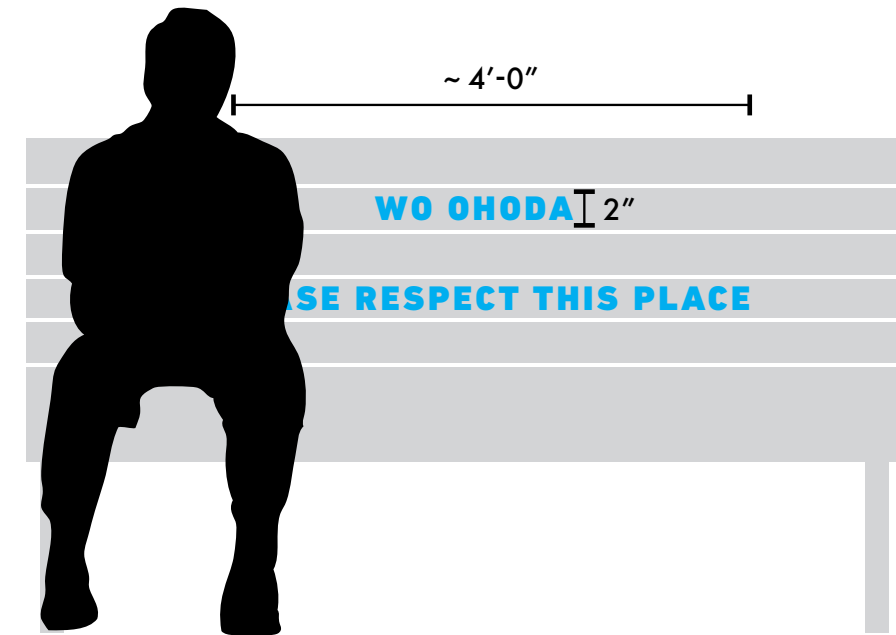
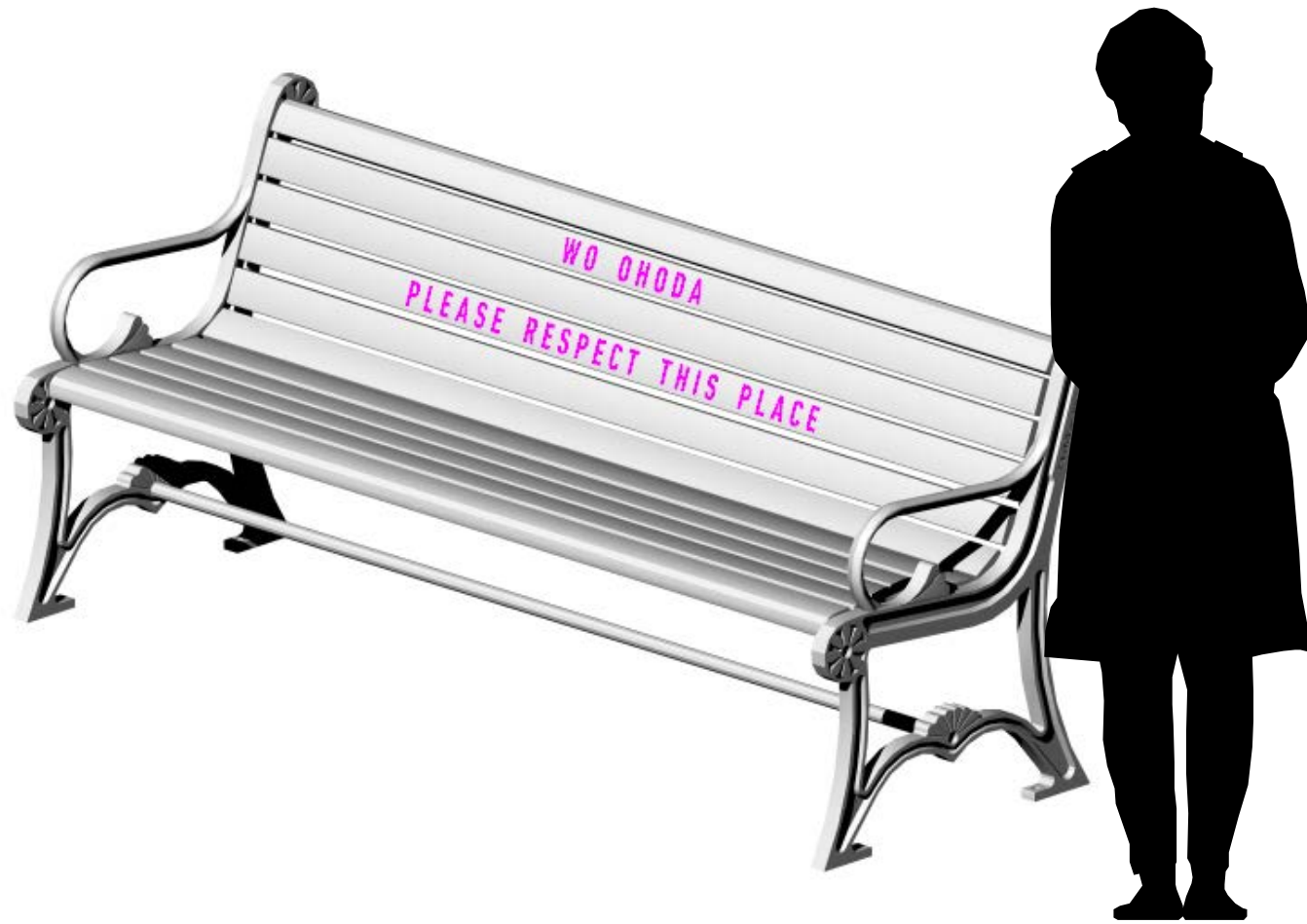
CURRENT TEXT:
This is a cemetery



Cut Corten Steel

6.0 BENCH MESSAGE A

CURRENT TEXT:
Wo 'ohoda . Please respect this place.



Routed text in composite wood slat

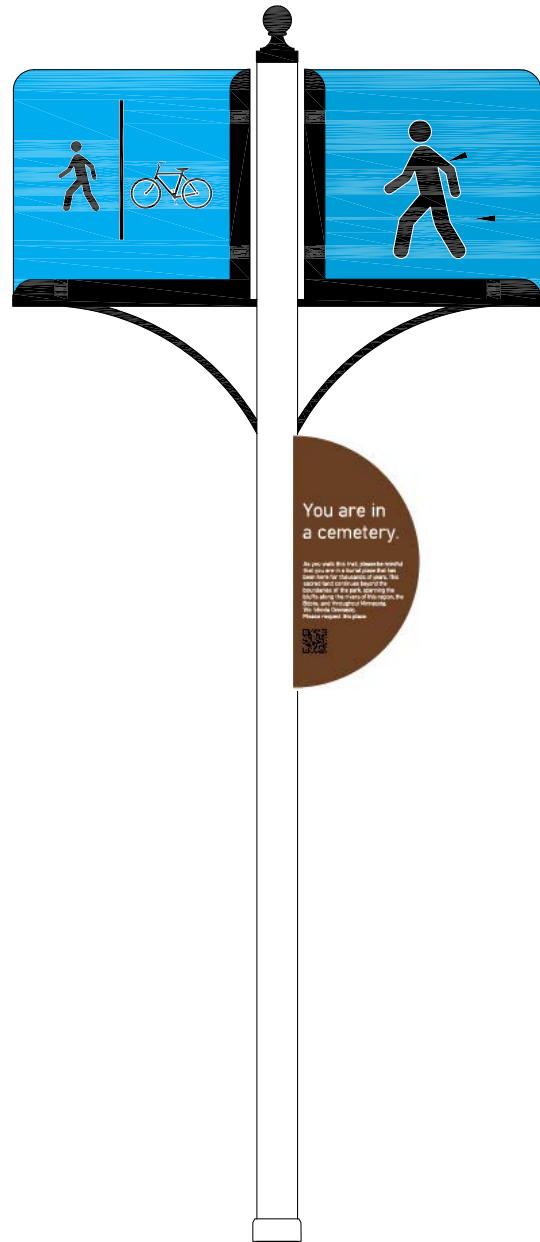
6.1 BENCH MESSAGE B

Text Height: 2" (visible from 50')
Blue Sign



CURRENT TEXT:
Wo 'ohoda. Please respect this place.

7.0 TRAIL MARKER SIGN



CURRENT TEXT:

You are in a cemetery. As you walk this trail, please be mindful that you are in a burial place that has been here for thousands of years. This sacred land continues beyond the boundaries of the park, spanning the bluffs along the rivers of this region, the Bdote, and throughout Minnesota. Wo 'ohoda . Please respect this place.



Powder Coat
Corten color

8.0 LIGHTPOST SIGN

Sign Size: 24" x 12"

Title Text Height: 2.25" (visible from 55')

Subtitle Text: 5/16" (visible from 7')



CURRENT TEXT:

Oceti / **Fire**

WICANHPIWETU / *SPRING STARS*

Ahdeska / **Salamander**

WICANHPI BDOKETU / *SUMMER STARS*

Keya / **turtle**

WICANHPI PTANTEU / *FALL STARS*

Nape / **Hand**

WICANHPI WANIYETU / *WINTER STARS*

Towiŋ / **Blue Woman**

WAZIYATA WICANHPI / *NORTH CIRCUMPOLAR STARS*

WORDS: PAVING MESSAGING

Respect and Honor: *Wo Ohoda / Respect*
Wokiksuye / Remember



STAMPED TEXT IN CONCRETE



SANDBLASTED CONCRETE