



Photograph by Dana Wheelock

Lilydale Regional Park

Update on Lilydale Regional Park : Phase III



The City of Saint Paul Department of Parks and Recreation has been working to implement the approved master plan for Lilydale Regional Park since 2011. The first phase of construction began with environmental remediation of the old Marina Dump Site where material was removed or recycled for reuse in the park.

In 2013, the first phase of roadway and trail construction began. This work includes pulling the former County Highway away from Pickerel Lake. A new parkway road was constructed along with paved trails through-out the park. Water and sanitary sewer service were installed under the new roadway to serve a future rest room building overlooking Pickerel Lake.

In 2014, the second phase of roadway work began. This involved the separation of the existing roadway and regional trail at a critical pinch point within the park. Existing overhead electric lines were buried and water and sanitary sewer were installed under the new roadway.

The third phase of roadway improvements in Lilydale Regional Park is planned to begin summer 2016. Work includes reconstruction of 2,800 lf of roadway along with buried overhead electric lines and installation of water and sanitary sewer.

These projects have been funded by Clean Water Land and Legacy Funds and Metropolitan Council Capital Improvement Bonds.



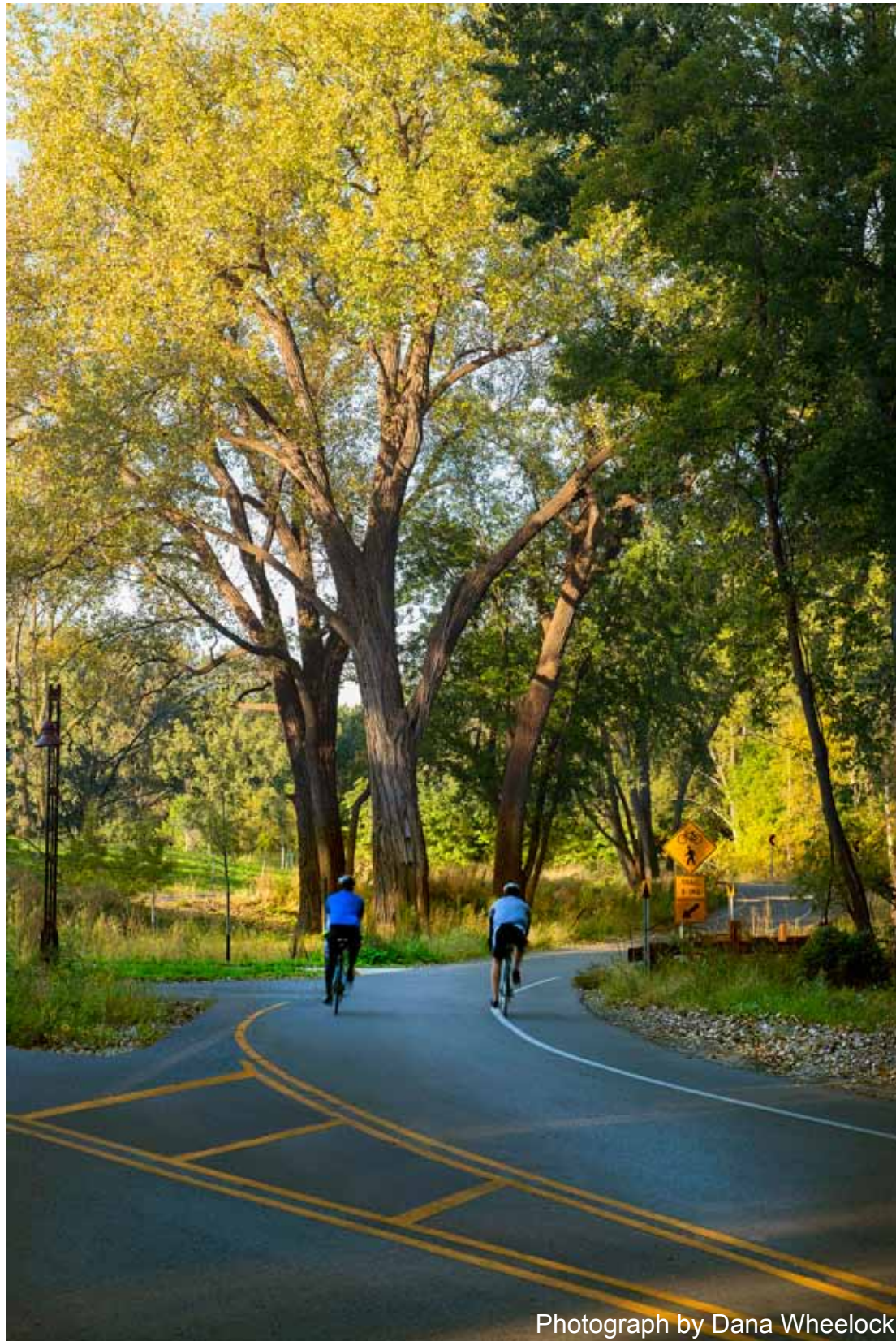
Lilydale Regional Park

Phase I Highlights



Lilydale Regional Park

Phase I Highlights



Photograph by Dana Wheelock

New roadway pulled away from Pickerel



Old roadway converted to shared use trail



Capped Lilydale Dump Site



Photograph by Dana Wheelock

Trails along Pickerel Lake

Lilydale Regional Park

Phase II Highlights

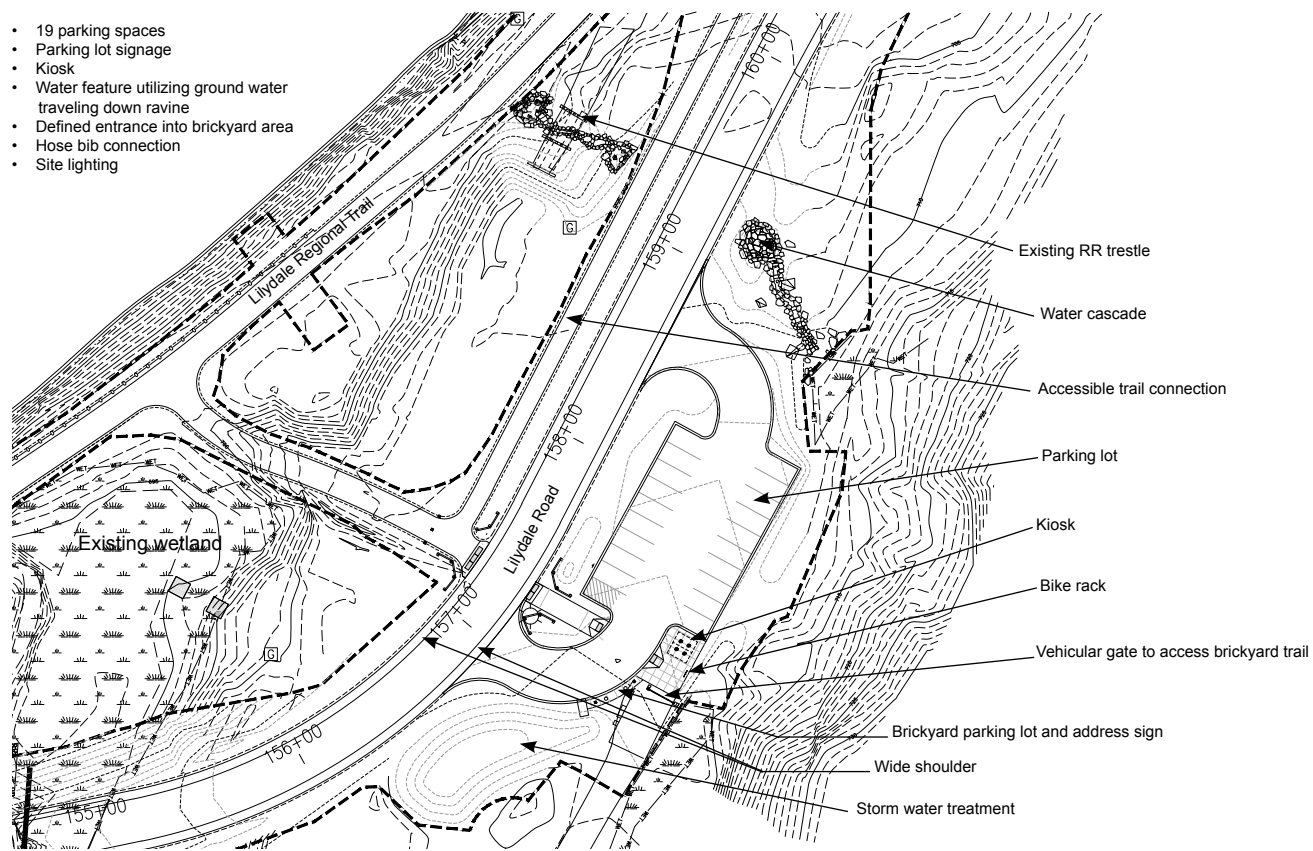


Highlights of Phase II

- 1 **Separation of regional trail and roadway:** construction of new roadway and regional trail, which eliminates existing roadway and trail conflict
- 2 **Brickyard Trail head:** provides trail head at entrance to fossil grounds. Includes parking, signage and associated site amenities
- 3 **Bluff stream water feature :** captures bluff water and transports it through a rock cascade
- 4 **Burial of existing power lines :** remove existing overhead power line and replace with underground looped system
- 5 **Trail resting spots :** construction of three trail rest areas offering views of Mississippi River and downtown Saint Paul

Lilydale Regional Park

- 19 parking spaces
- Parking lot signage
- Kiosk
- Water feature utilizing ground water traveling down ravine
- Defined entrance into brickyard area
- Hose bib connection
- Site lighting



Parking lot and trailhead



Photograph by Dana Wheelock

Resting Areas



Photograph by Dana Wheelock

Bluff Stream Water Feature - winter and summer condition

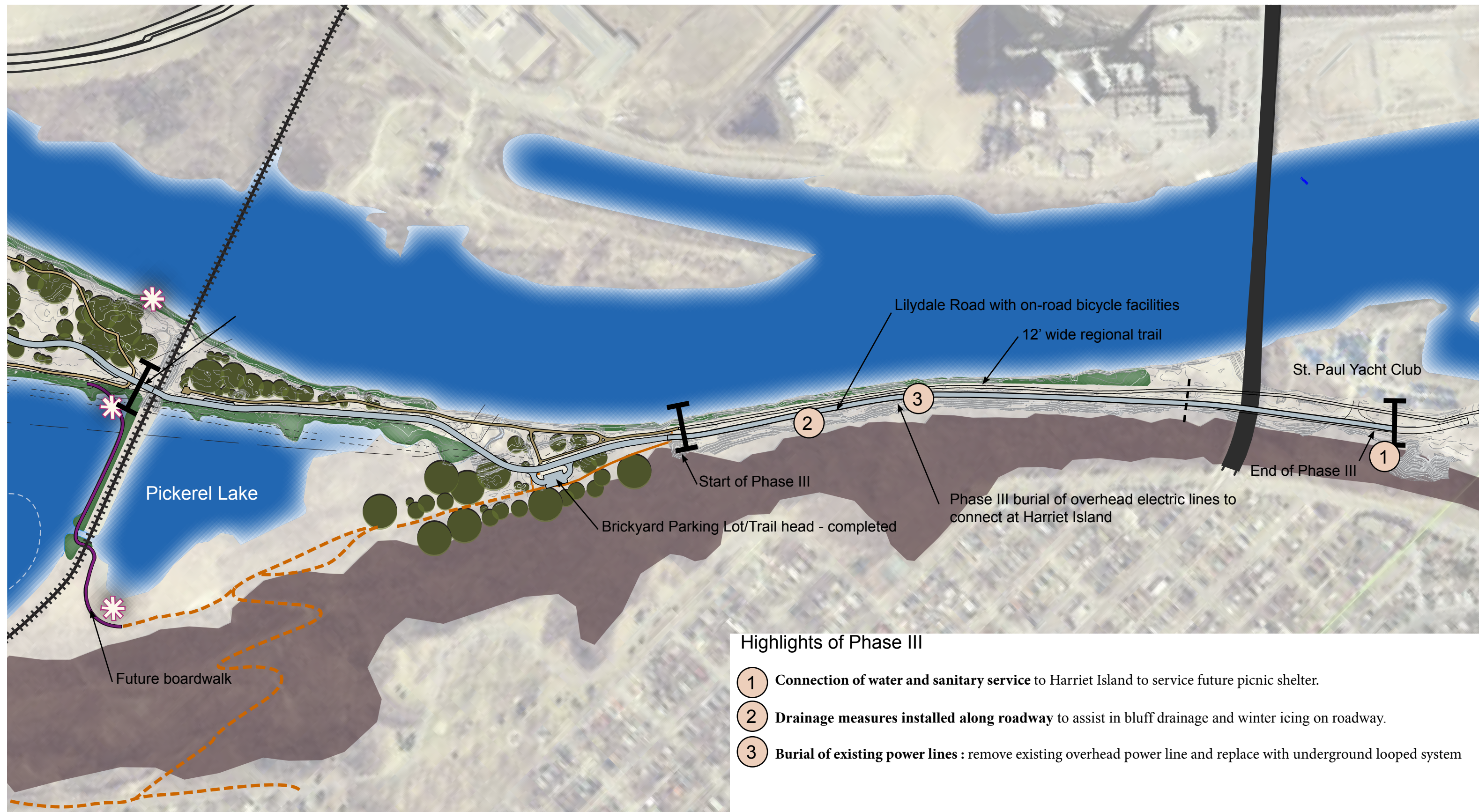


Photograph by Dana Wheelock

Separated roadway and regional trail

Lilydale Regional Park

Lilydale Regional Park - PHASE III



Lilydale Regional Park

Phase III Highlights

Construction will begin after July 1, 2016.

Roadway and trail will be closed during construction. Thru traffic will be stopped at Harriet Island and Brickyard Trail Parking lot.

Roadway designed to 25 MPH.

Wide shoulders for on road cyclists.

Regional trail to remain between roadway and Mississippi River.

Native plantings installed.

Overhead electrical lines buried.

Drainage measures installed along roadway to assist in bluff drainage and winter icing on roadway.



Photograph by Dana Wheelock

Lilydale Regional Park