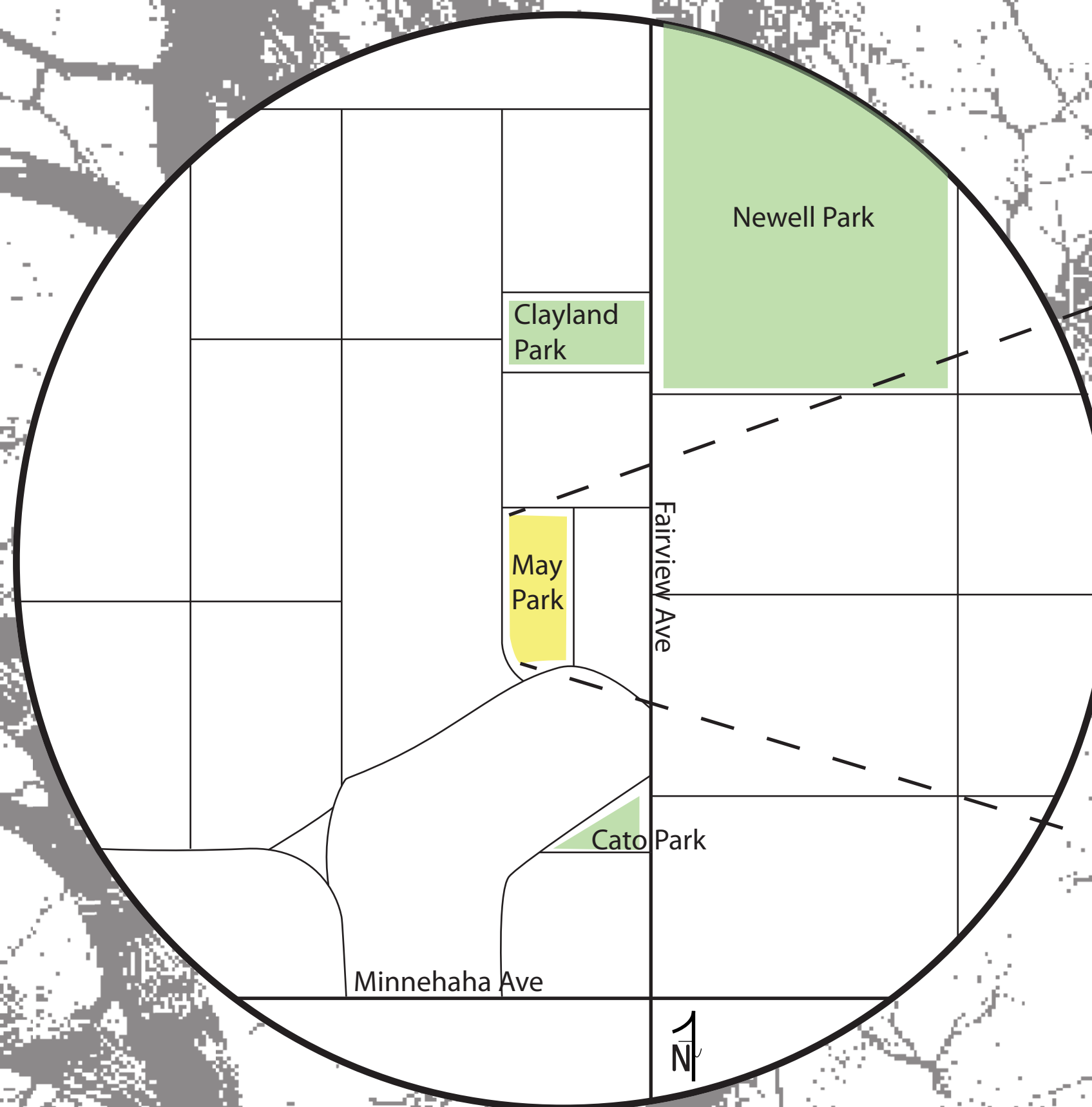


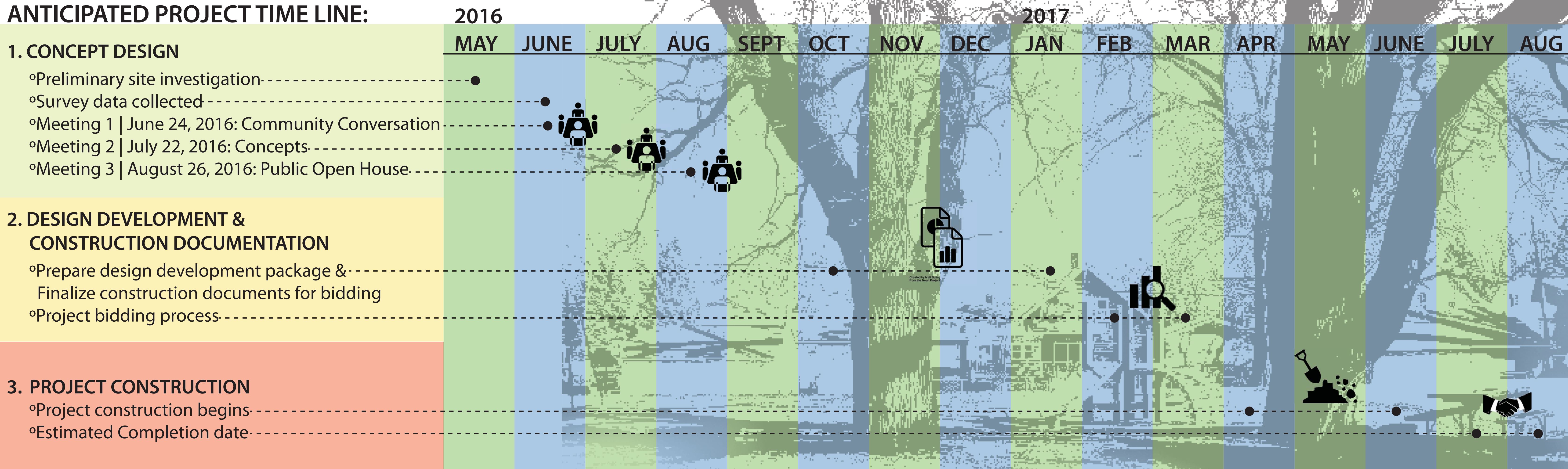
PROJECT LOCATION



PROJECT PURPOSE:

May Park is a 0.81 acre park surrounded by residential homes in the Hamline-Midway Neighborhood. The park currently has two large oak trees, a swing set, merry-go-round, and flexible open space. Funding from the Capital Improvement Bonds (CIB) has been secured to remove existing play equipment and create a “playful” space within May Park.

ANTICIPATED PROJECT TIME LINE:



MAY PARK RENOVIATION

OUTLINE & SCHEDULE | JUNE 24, 2016

Project Supervisor: Alice Messer | Project Manager: Cheeneng Yang
 Contact: 651-266-6412 | 651-266-6414
 Email: Alice.Messer@ci.stpaul.mn.us | Cheeneng.Yang@ci.stpaul.mn.us





MAY PARK RENOVIATION

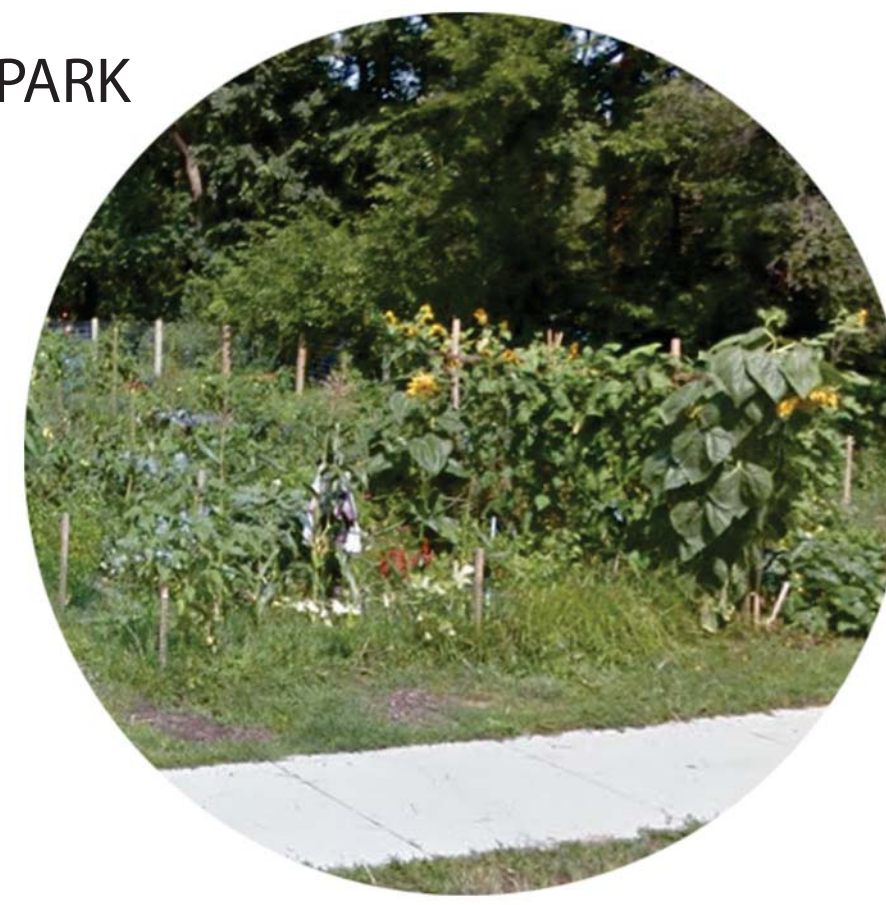
SITE CONTEXT | JUNE 24, 2016

Project Supervisor: Alice Messer | Project Manager: Cheeneng Yang
 Contact: 651-266-6412 | 651-266-6414
 Email: Alice.Messer@ci.stpaul.mn.us | Cheeneng.Yang@ci.stpaul.mn.us





TATUM PARK



COMMUNITY GARDEN

NEWELL PARK



TRADITIONAL PLAY AREA



LARGE FIRE PIT

AMENITIES OFFERED:
 PICNICKING
 RENTAL FACILITY
 BASKETBALL
 TIRE SWING
 SWINGS
 PLAY AREA

CLAYLAND PARK



TENNIS COURT

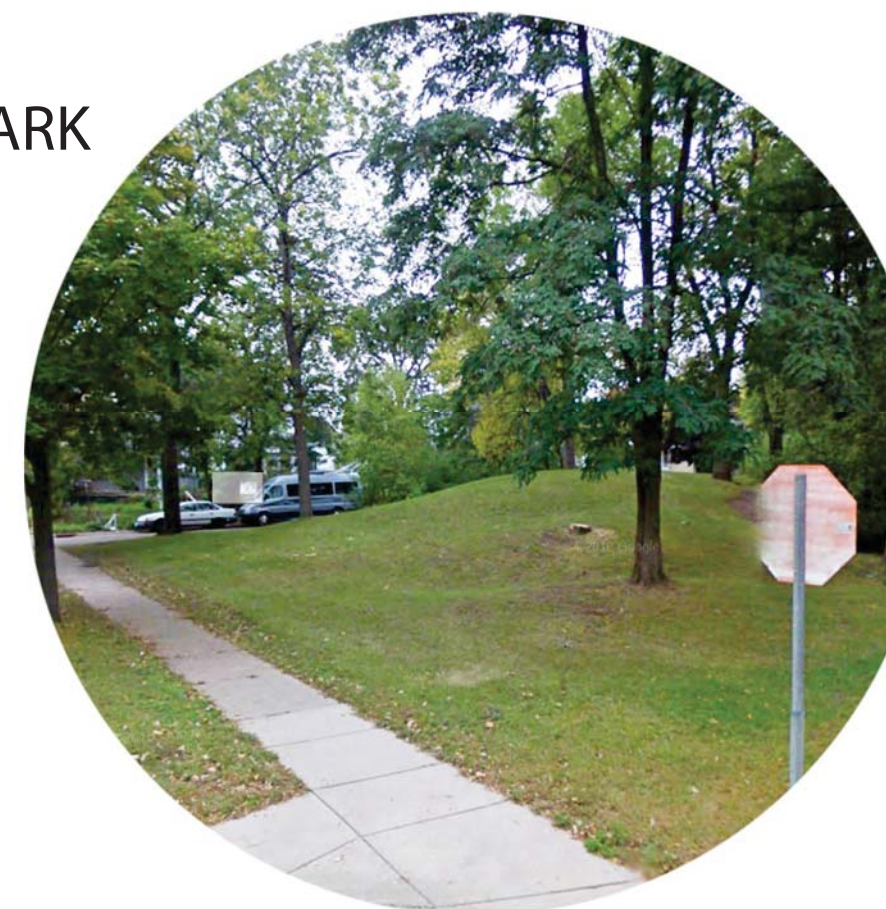


SHELTER
 GRILL



BASEBALL FIELD

CATO PARK



LEISURE-OPEN SPACE

MAY PARK

PARK = 0.81 ACRE
 PLAY AREA = 3670 SQ. FT.



OAK TREES



PLAY AREA



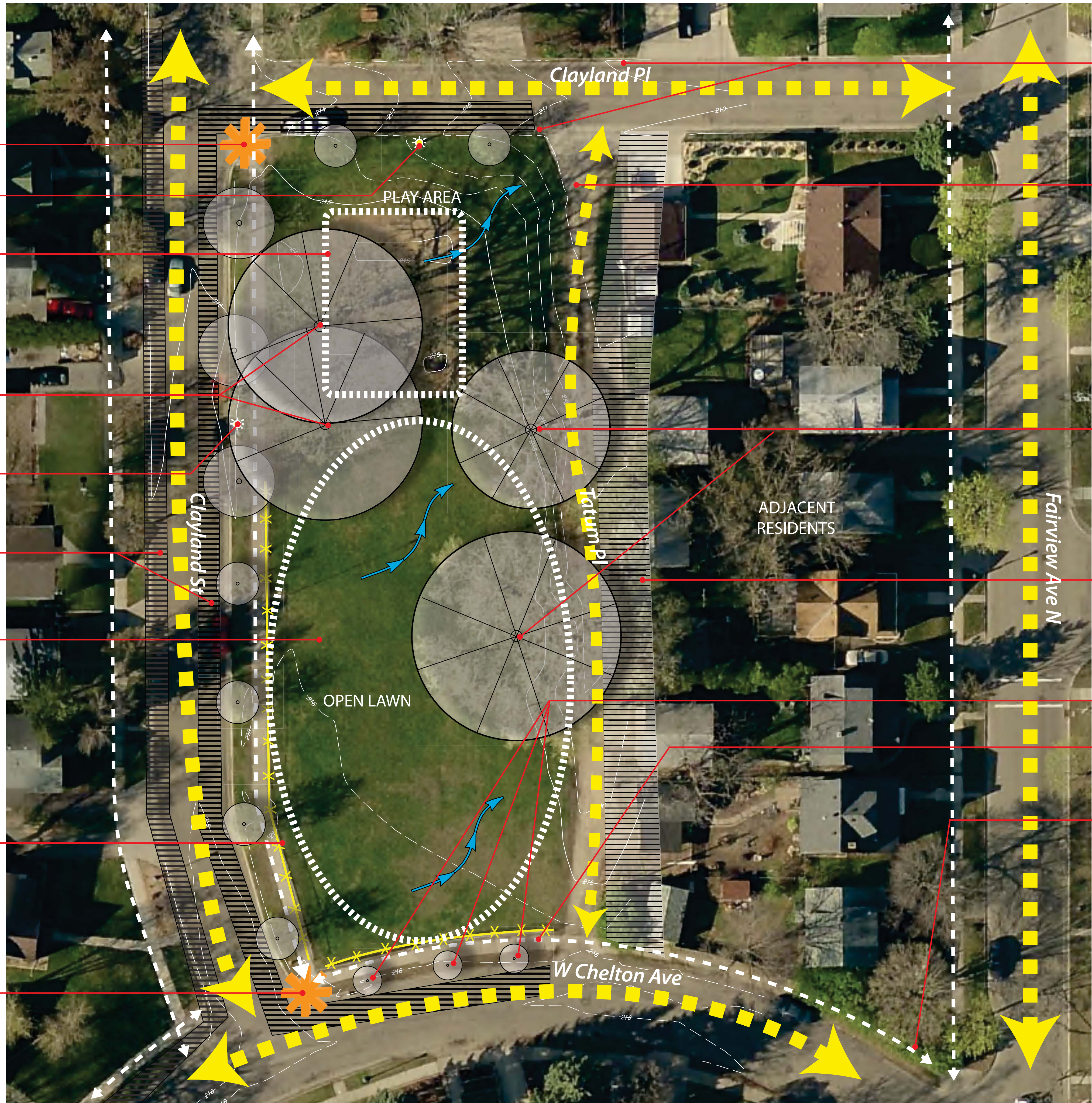
OPEN LAWN

MAY PARK RENOVATION

SURROUNDING PARKS | JUNE 24, 2016

Project Supervisor: Alice Messer | Project Manager: Cheeneng Yang
 Contact: 651-266-6412 | 651-266-6414
 Email: Alice.Messer@ci.stpaul.mn.us | Cheeneng.Yang@ci.stpaul.mn.us





No sidewalk
-Limits connection to adjacent parks -
Newell Park, Clayton Park

Existing Alley - Gravel

Existing Trees - Protect

Open view to back of home from
park
-Explore ways to define park space from
alley

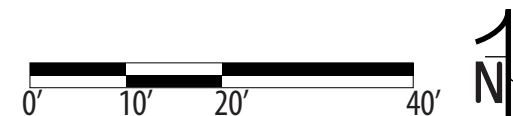
Boulevard Trees - Protect

Sidewalk
-Good condition
-Provide pedestrian access to park

Pedestrian access from Fairview
Ave

Legend

- Pedestrian Circulation
- Road Network
- Chain-link Fence
- Drainage Pattern
- Access Point



Northern Park Access
- No Signage

Street Light

Existing Play Equipment
-Does not meet current safety standards
-Not ADA accessible
-Disconnected from rest of the park
-Play container is in good condition
-Location under oak tree provides shade

Existing Oak Trees
-Iconic to park
-Protect!

Street Light

Existing On-Street Parking

Existing Open Lawn
-Flat, sunny, & flexible open space
-Open view to alley
-Site of former Tatum School

-Disconnected from rest of site
-Limited planting & visual interest
-No signage to identify park

Existing Chain-link Fence
-Adds protection & defines space
-Limits access

Southern Park Access
- No Signage

MAY PARK RENOVATION

EXISTING CONDITION | OPPORTUNITIES & CONSTRAINTS | JUNE 24, 2016

Project Supervisor: Alice Messer | Project Manager: Cheeneng Yang
Contact: 651-266-6412 | 651-266-6414
Email: Alice.Messer@ci.stpaul.mn.us | Cheeneng.Yang@ci.stpaul.mn.us



IDEA: A

CLAYLAND PL



PLAYFUL ELEMENTS



PLAYFUL

- Open Space
- Gathering Space
- Play Space
- Primary Circulation



Key Ideas

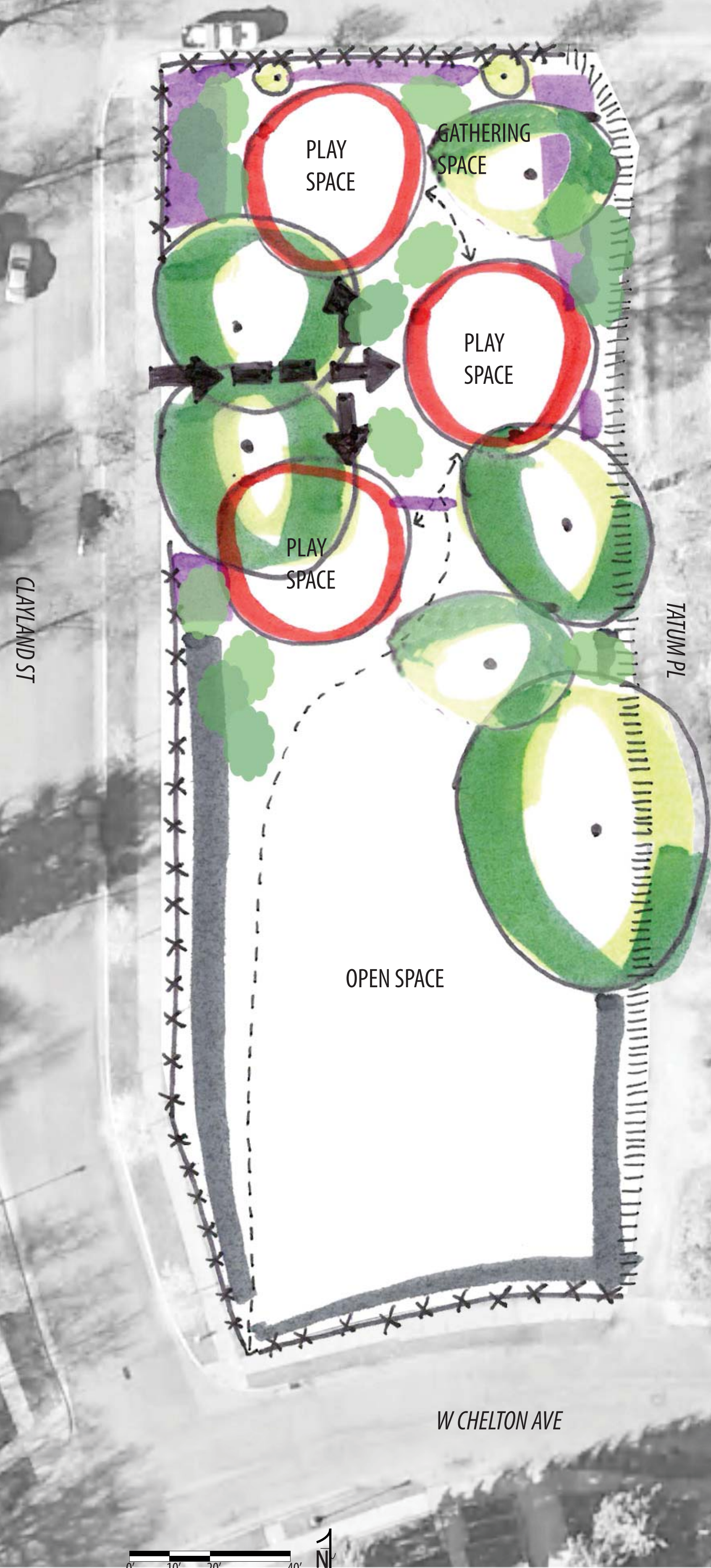
- Looped circulation connects open space to play space
- Play space that utilizes existing play container
- Oak trees provide shade for play space
- Sculptural play elements
- Playful mounds & landforms to add topography to site
- View of residential homes softened by vegetation

Share Your Ideas!

-
-
-
-
-
-
-
-
-
-

IDEA: B

CLAYLAND PL



PLAYFUL ELEMENTS



- Open Space
- Gathering Space
- Play Space
- Primary Circulation
- - -> Secondary Circulation



Key Ideas

- Oak trees welcome visitors as a gateway & entrance to park
- Separation of play spaces encouraging movement through park
- Play spaces differ by theme (nature), style (climbing), or material (net)
- Internal paths connects spaces within park

Share Your Ideas!

-
-
-
-
-
-
-
-
-
-

MAY PARK RENOVATION

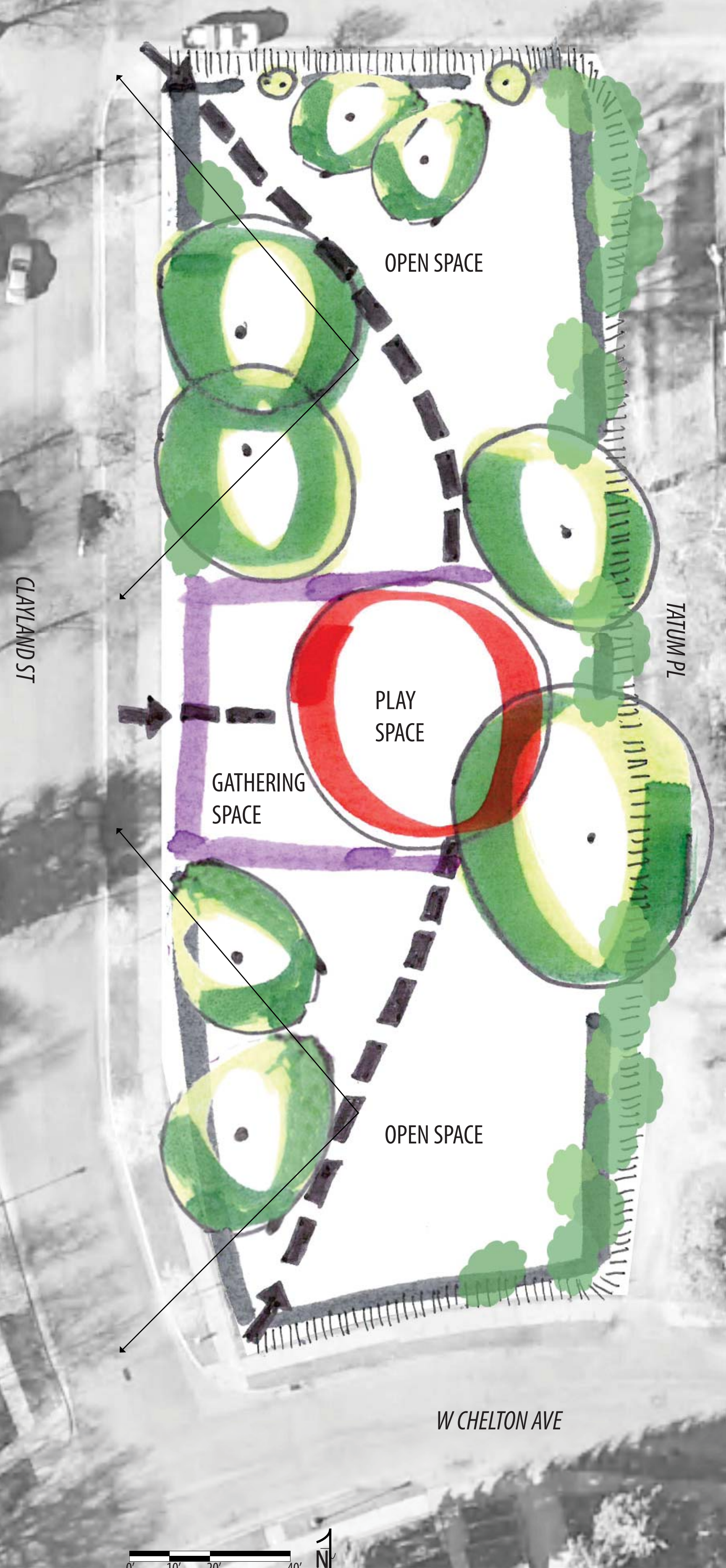
PLAYFUL IDEAS | JUNE 24, 2016

Project Supervisor: Alice Messer | Project Manager: Cheeneng Yang
 Contact: 651-266-6412 | 651-266-6414
 Email: Alice.Messer@ci.stpaul.mn.us | Cheeneng.Yang@ci.stpaul.mn.us



IDEA: C

CLAYLAND PL



PLAYFUL ELEMENTS



- Open Space
- Gathering Space
- Play Space
- Primary Circulation

Key Ideas

- Combine gathering space & play space in central location
- Encourage "lounging" with artful seating & play elements
- Remove fence along Clayland & open up park to residents
- Relocate play space away from oak trees



Share Your Ideas!

-
-
-
-
-
-
-
-
-
-

IDEA: D

CLAYLAND PL

PLAYFUL ELEMENTS

CLAYLAND ST

TATUM PL

GATHERING SPACE

PLAY SPACE

OPEN SPACE

W CHELTON AVE



- Open Space
- Gathering Space
- Play Space
- Primary Circulation
- - - Secondary Circulation

Key Ideas

- Play spaces act as “obstacle course” that promotes movement thru park
- Add trees to enhance park & reduce amount of open space
- Remove fencing to expand park access to community



UNIQUE

Share Your Ideas!

-
-
-
-
-
-
-
-
-
-
-
-
-
-
-

MAY PARK RENOVATION

PLAYFUL IDEAS | JUNE 24, 2016

Project Supervisor: Alice Messer | Project Manager: Cheeneng Yang
 Contact: 651-266-6412 | 651-266-6414
 Email: Alice.Messer@ci.stpaul.mn.us | Cheeneng.Yang@ci.stpaul.mn.us



SCULPTURAL



POETIC

PUBLIC
ART



INTERACTIVE



A dog on a walk
is like a person in love-
You can't tell them
it's the same old world



ENGAGED



MAY PARK RENOVATION

PUBLIC ART IDEAS | JUNE 24, 2016

Project Supervisor: Alice Messer | Project Manager: Cheeneng Yang
Contact: 651-266-6412 | 651-266-6414
Email: Alice.Messer@ci.stpaul.mn.us | Cheeneng.Yang@ci.stpaul.mn.us

