



MAY PARK RENOVIATION | COMMUNITY MEETING #2

JULY 28, 2016

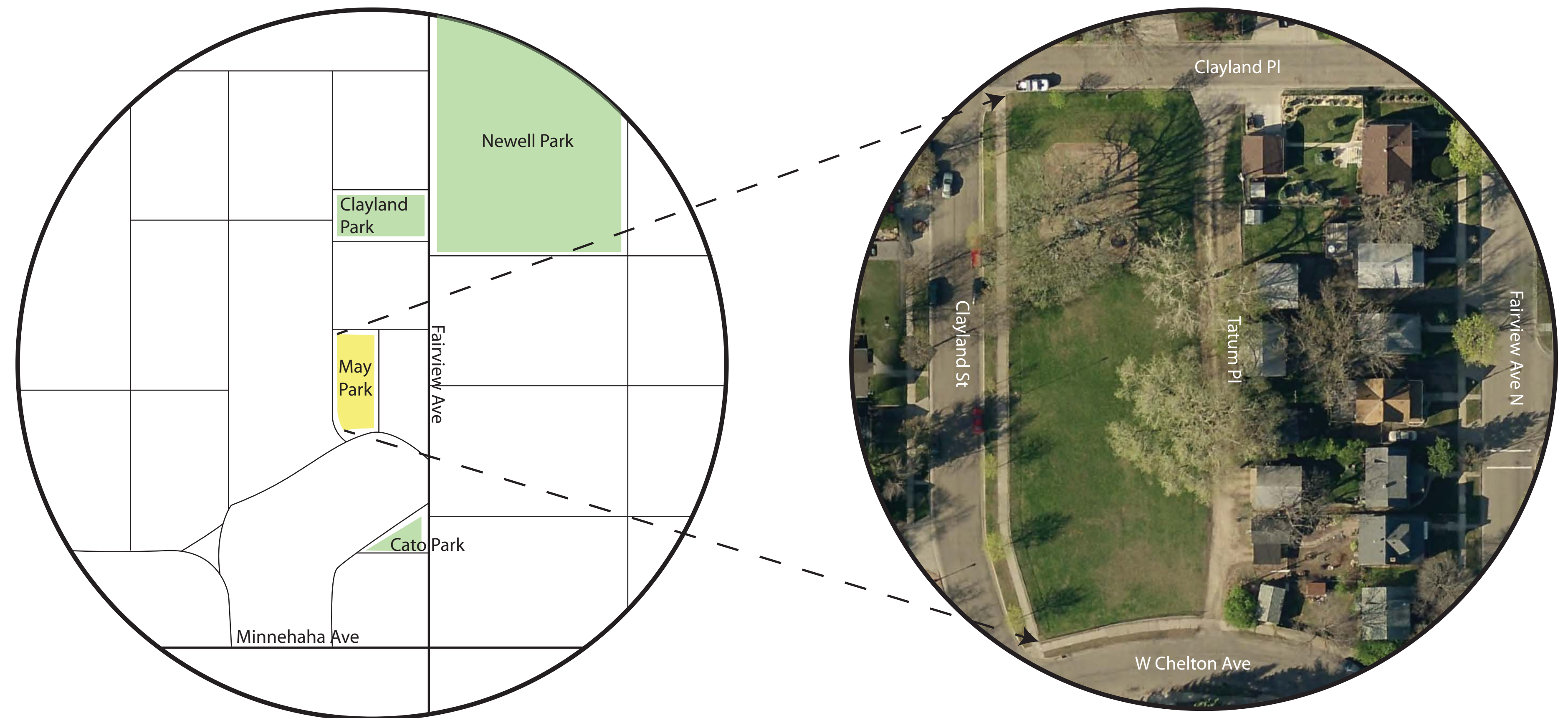
Project Supervisor: Alice Messer | Project Manager: Cheeneng Yang
Contact: 651-266-6412 | 651-266-6414
Email: Alice.Messer@ci.stpaul.mn.us | Cheeneng.Yang@ci.stpaul.mn.us



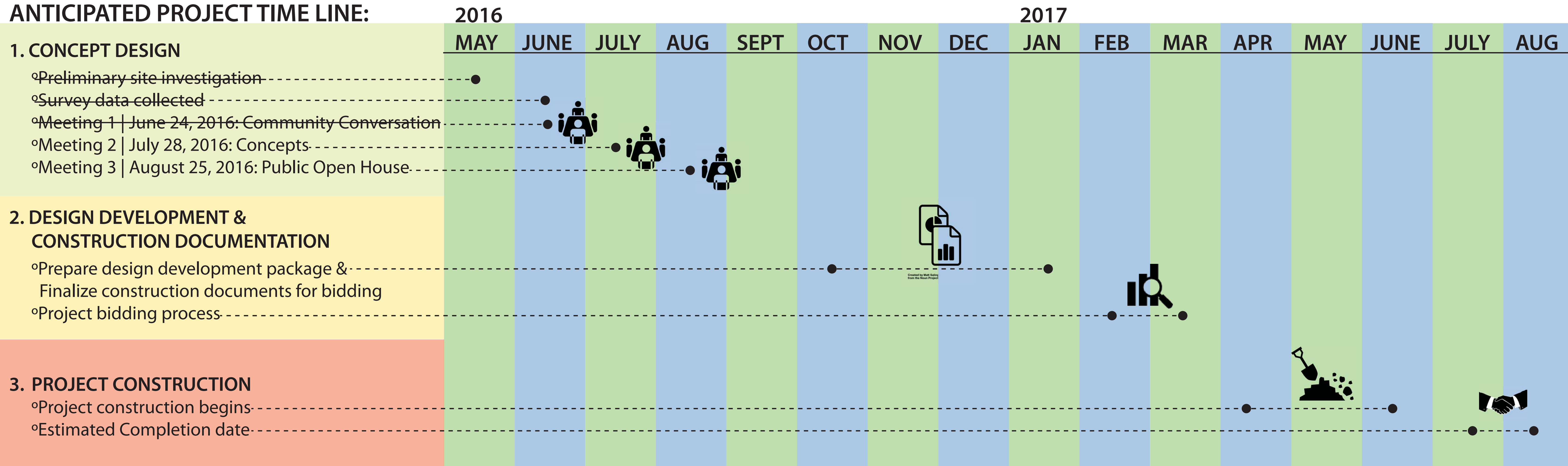
MEETING AGENDA

- A) Welcome & Introductions
- B) Recap of Meeting #1
- C) Presentation of Concepts
 - Discussion of concepts
- D) Public Art
- E) Questions | Next Step

PROJECT LOCATION



ANTICIPATED PROJECT TIME LINE:



MAY PARK RENOVATION: AGENDA

JULY 28, 2016

Project Supervisor: Alice Messer | Project Manager: Cheeneng Yang
 Contact: 651-266-6412 | 651-266-6414
 Email: Alice.Messer@ci.stpaul.mn.us | Cheeneng.Yang@ci.stpaul.mn.us





MAY PARK RENOVATION: MEETING #1 REVIEW

JULY 28, 2016

Project Supervisor: Alice Messer | Project Manager: Cheeneng Yang
 Contact: 651-266-6412 | 651-266-6414
 Email: Alice.Messer@ci.stpaul.mn.us | Cheeneng.Yang@ci.stpaul.mn.us



IDEA: A

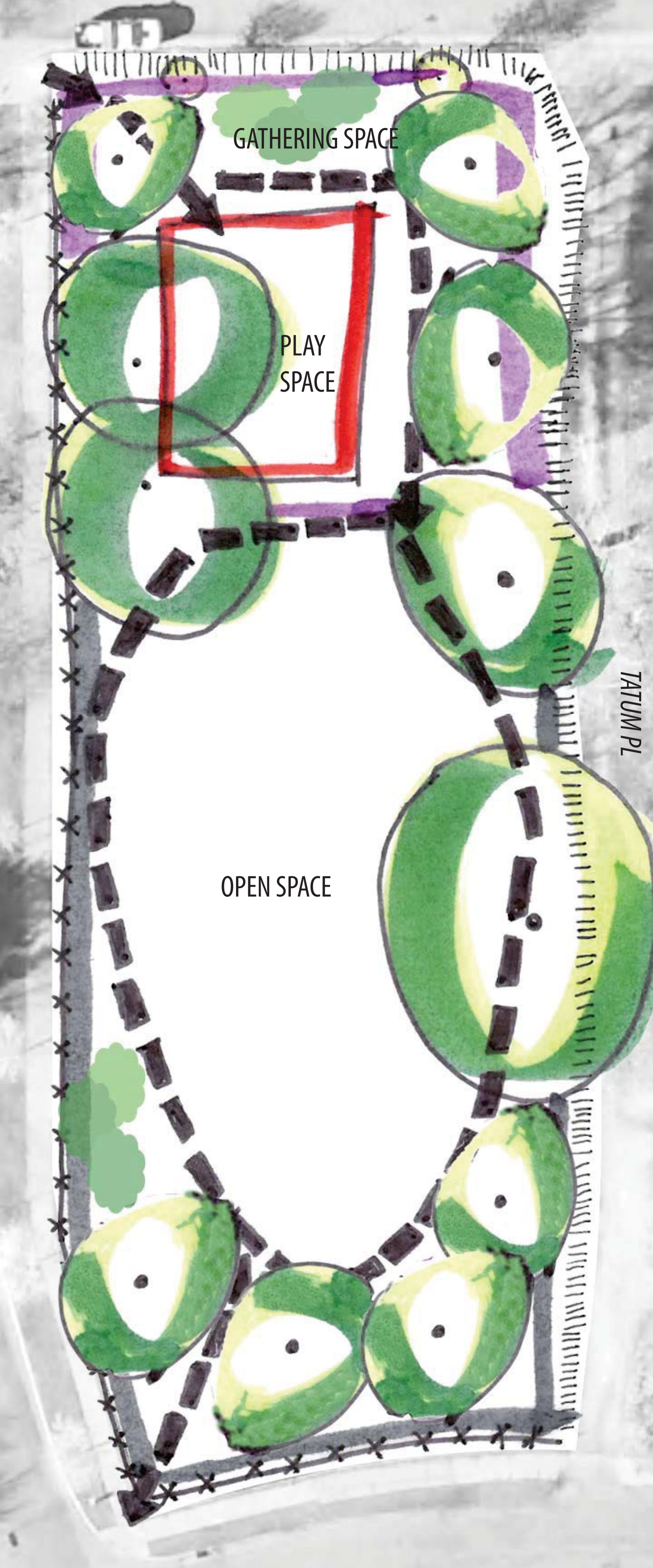
CLAYLAND PL

PLAYFUL ELEMENTS

CLAYLAND ST

TATUM PL

W CHELTON AVE



PLAYFUL

- Open Space
- Gathering Space
- Play Space
- Primary Circulation



Key Ideas

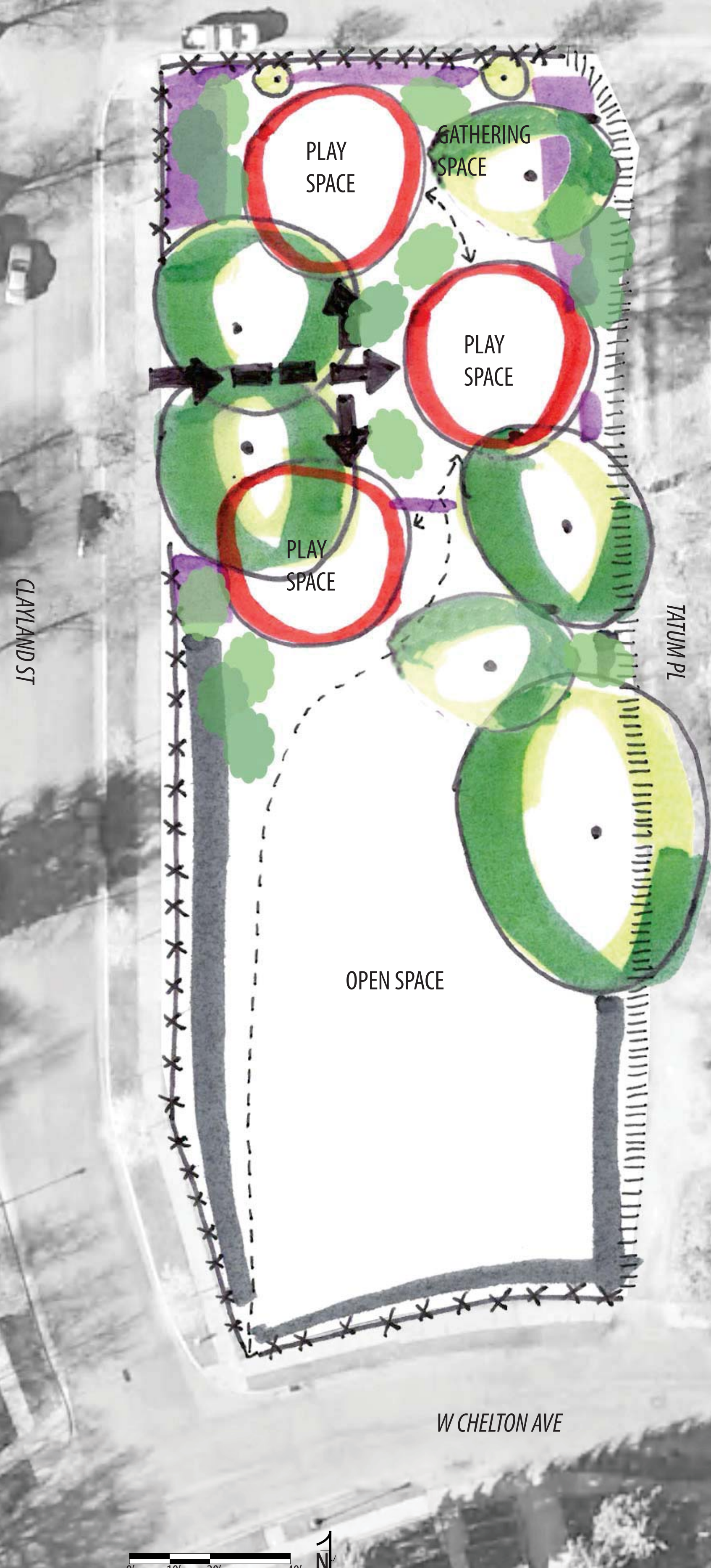
- Looped circulation connects open space to play space
- Play space that utilizes existing play container
- Oak trees provide shade for play space
- Sculptural play elements
- Playful mounds & landforms to add topography to site
- View of residential homes softened by vegetation

Share Your Ideas!

-
-
-
-
-
-
-
-
-
-

IDEA: B

CLAYLAND PL



PLAYFUL ELEMENTS



- Open Space
- Gathering Space
- Play Space
- Primary Circulation
- Secondary Circulation



Key Ideas

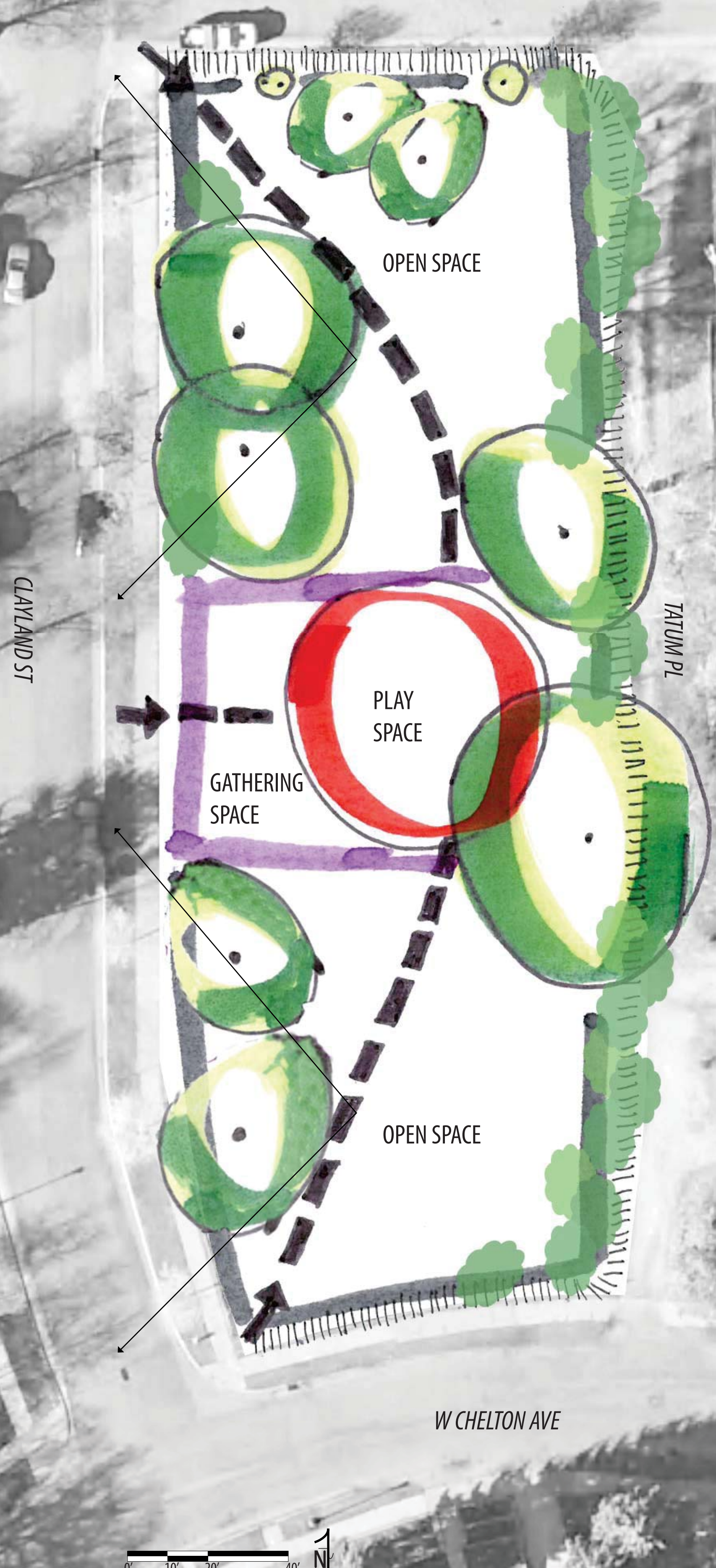
- Oak trees welcome visitors as a gateway & entrance to park
- Separation of play spaces encouraging movement through park
- Play spaces differ by theme (nature), style (climbing), or material (net)
- Internal paths connects spaces within park

Share Your Ideas!

-
-
-
-
-
-
-
-
-
-

IDEA: C

CLAYLAND PL



PLAYFUL ELEMENTS



- Open Space
- Gathering Space
- Play Space
- Primary Circulation

Key Ideas

- Combine gathering space & play space in central location
- Encourage "lounging" with artful seating & play elements
- Remove fence along Clayland & open up park to residents
- Relocate play space away from oak trees



Share Your Ideas!

-
-
-
-
-
-
-
-
-
-

IDEA: D

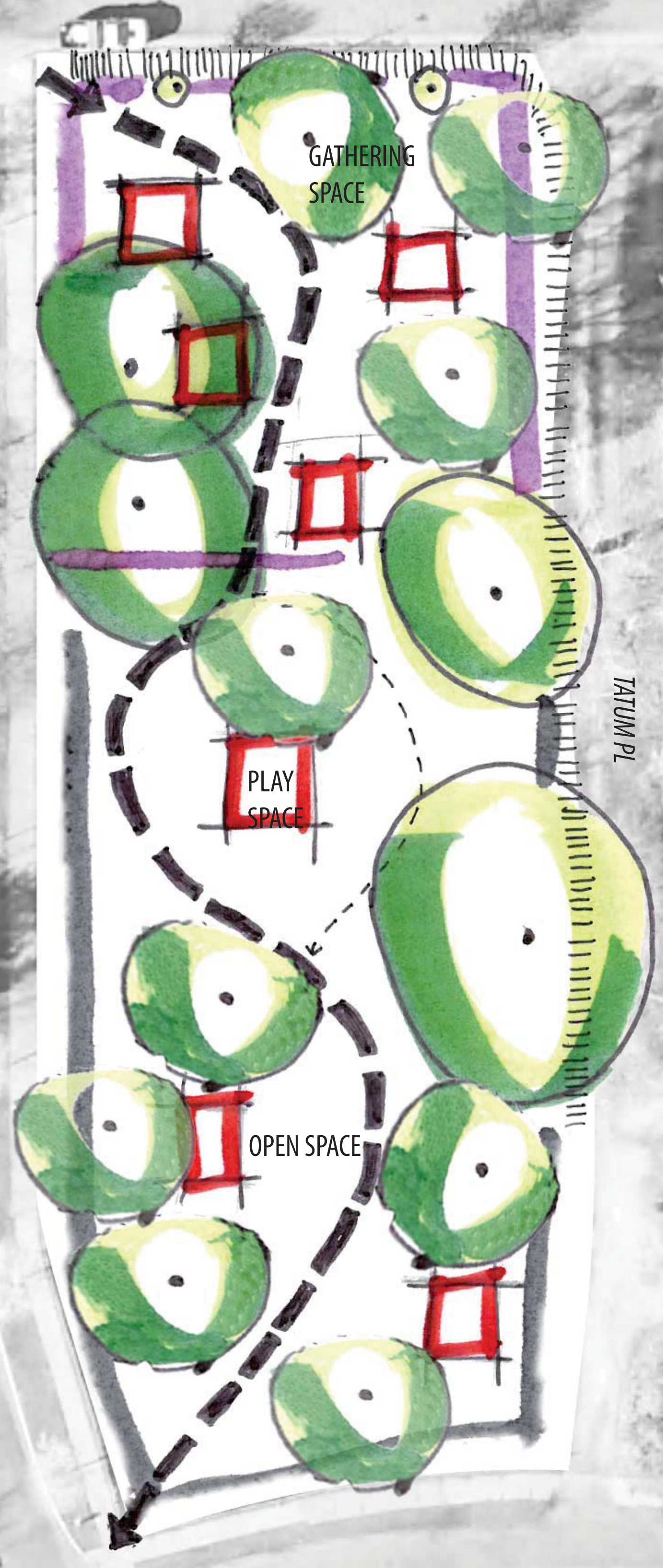
CLAYLAND PL

PLAYFUL ELEMENTS

CLAYLAND ST

TATUM PL

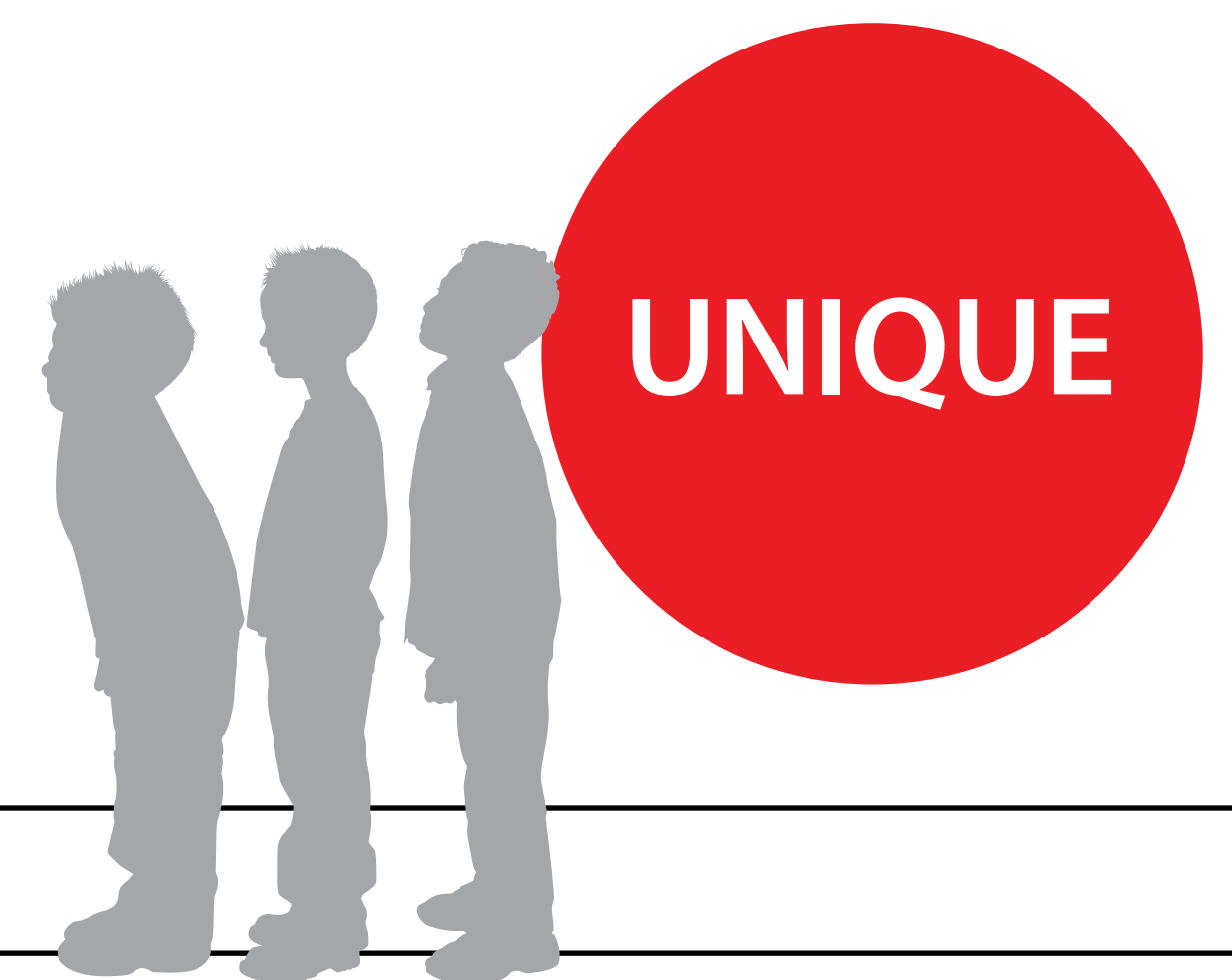
W CHELTON AVE



- Open Space
- Gathering Space
- Play Space
- Primary Circulation
- - - Secondary Circulation

Key Ideas

- Play spaces act as “obstacle course” that promotes movement thru park
- Add trees to enhance park & reduce amount of open space
- Remove fencing to expand park access to community



Share Your Ideas!

- | | |
|---|---|
| • | • |
| • | • |
| • | • |
| • | • |
| • | • |
| • | • |
| • | • |
| • | • |
| • | • |
| • | • |

FROM MEETING #1



KEY COMMENTS

- Play Space for Children
- Keep Open Space
- Protect Oak Trees



- Add Picnic Tables & Benches
- Keep Merry-Go-Round
- Flexible Play Elements



MERRY-GO-ROUND CAN STAY! FOR NOW.



KEY IDEAS:

- Circular path defines open space & encourages movement through park
- Nature theme play space

PLAYFUL ELEMENTS

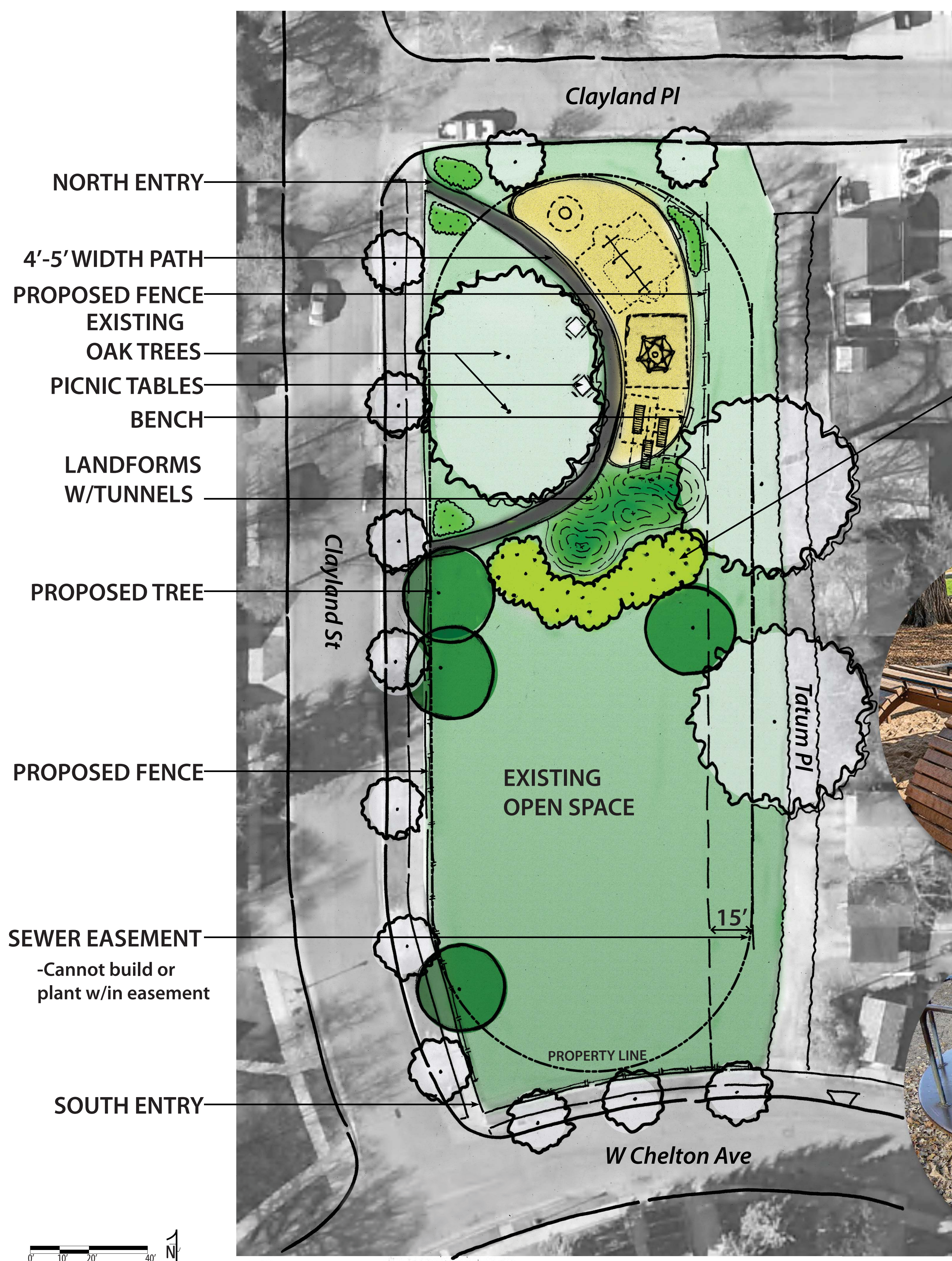


MAY PARK RENOVATION: CONCEPT A

JULY 28, 2016

Project Supervisor: Alice Messer | Project Manager: Cheeneng Yang
 Contact: 651-266-6412 | 651-266-6414
 Email: Alice.Messer@ci.stpaul.mn.us | Cheeneng.Yang@ci.stpaul.mn.us





KEY IDEAS:

- Play space orientated off existing oak trees
- Create picnic/gathering space under trees
- Tree grove to define play space from open space
- Maintain open space

TREE GROVE PRECEDENTS



PLAYFUL ELEMENTS



MAY PARK RENOVATION: CONCEPT B

JULY 28, 2016

Project Supervisor: Alice Messer | Project Manager: Cheeneng Yang
 Contact: 651-266-6412 | 651-266-6414
 Email: Alice.Messer@ci.stpaul.mn.us | Cheeneng.Yang@ci.stpaul.mn.us





Sculpture: Fence Art



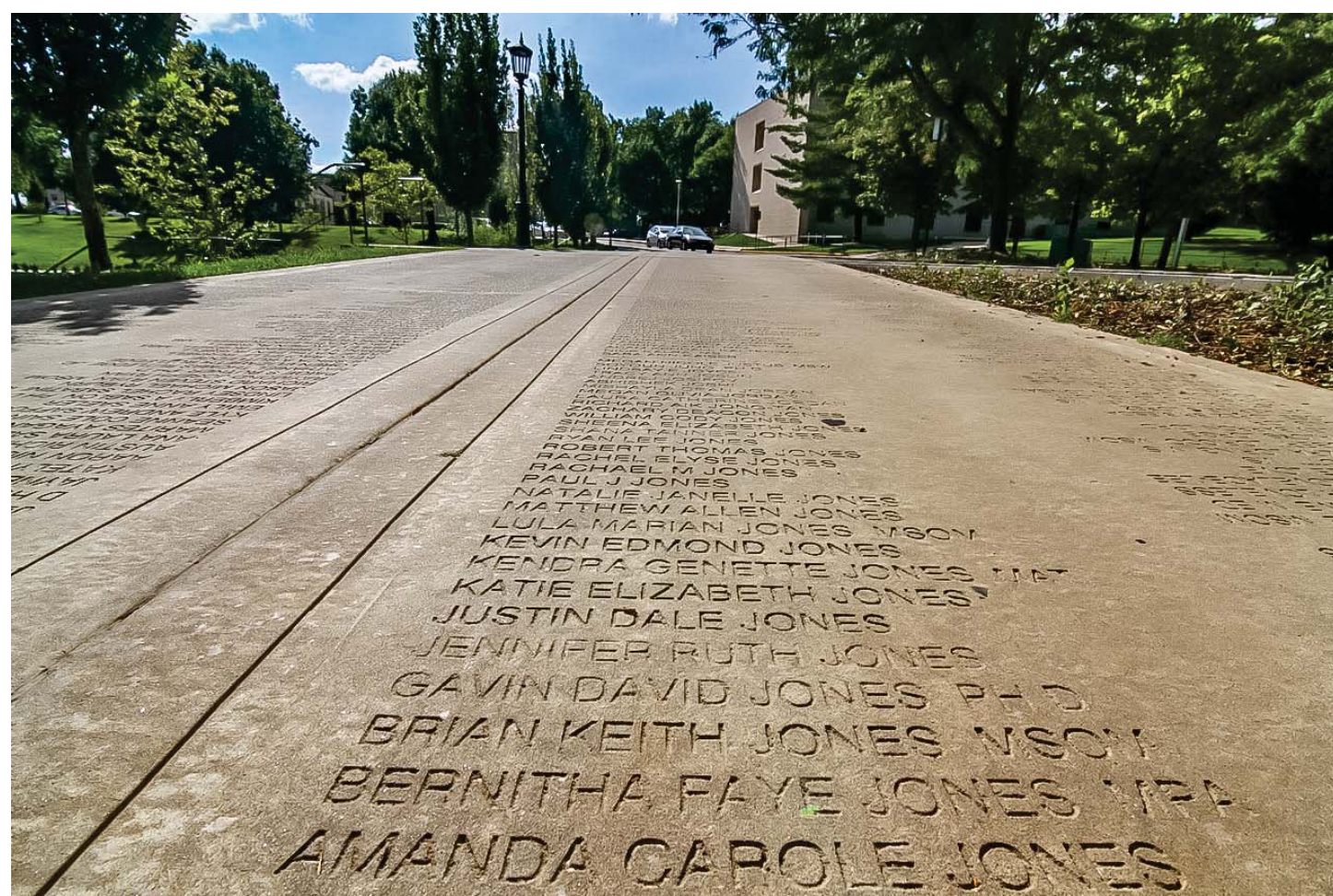
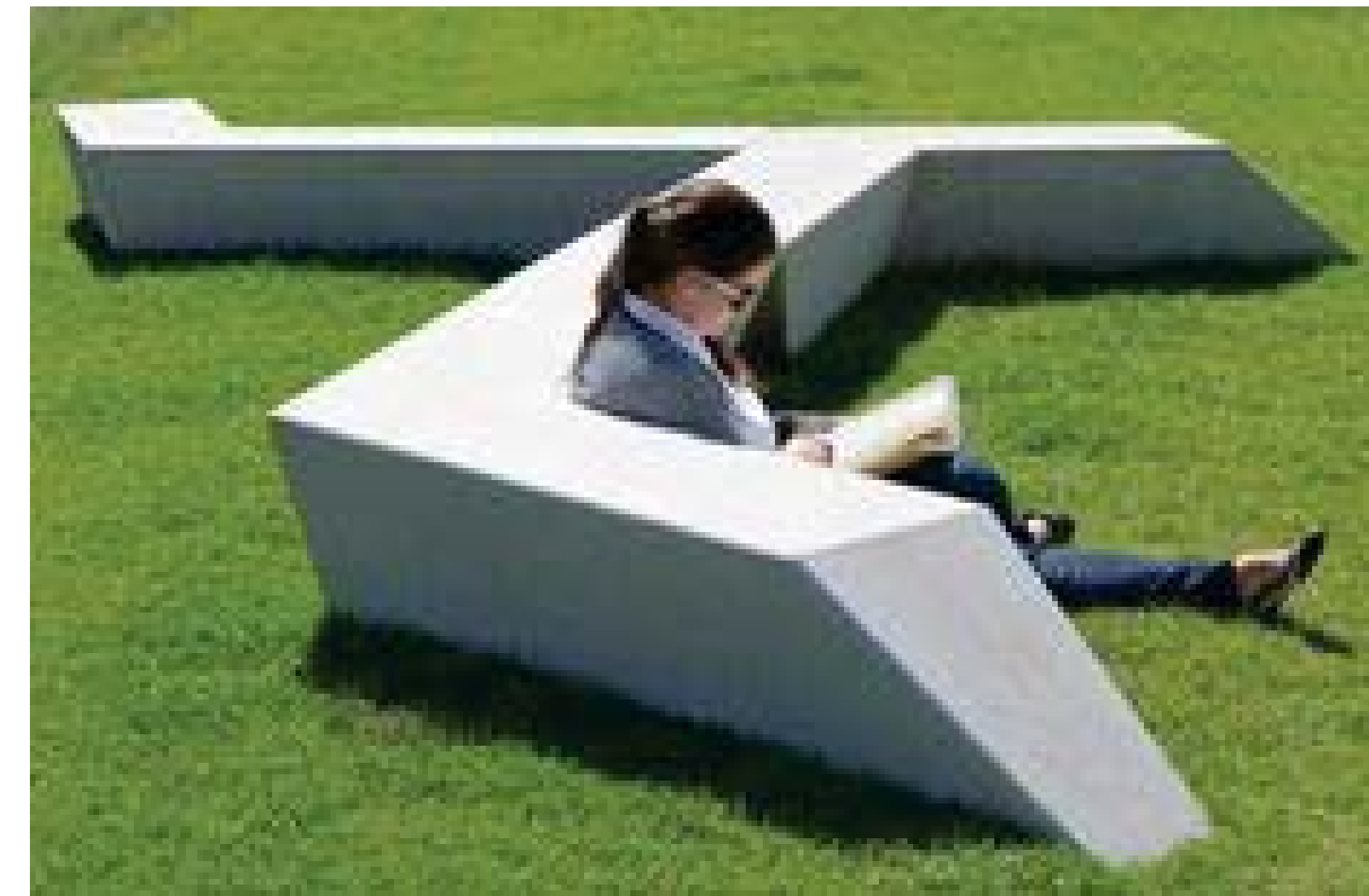
Sculpture: Creative Sign



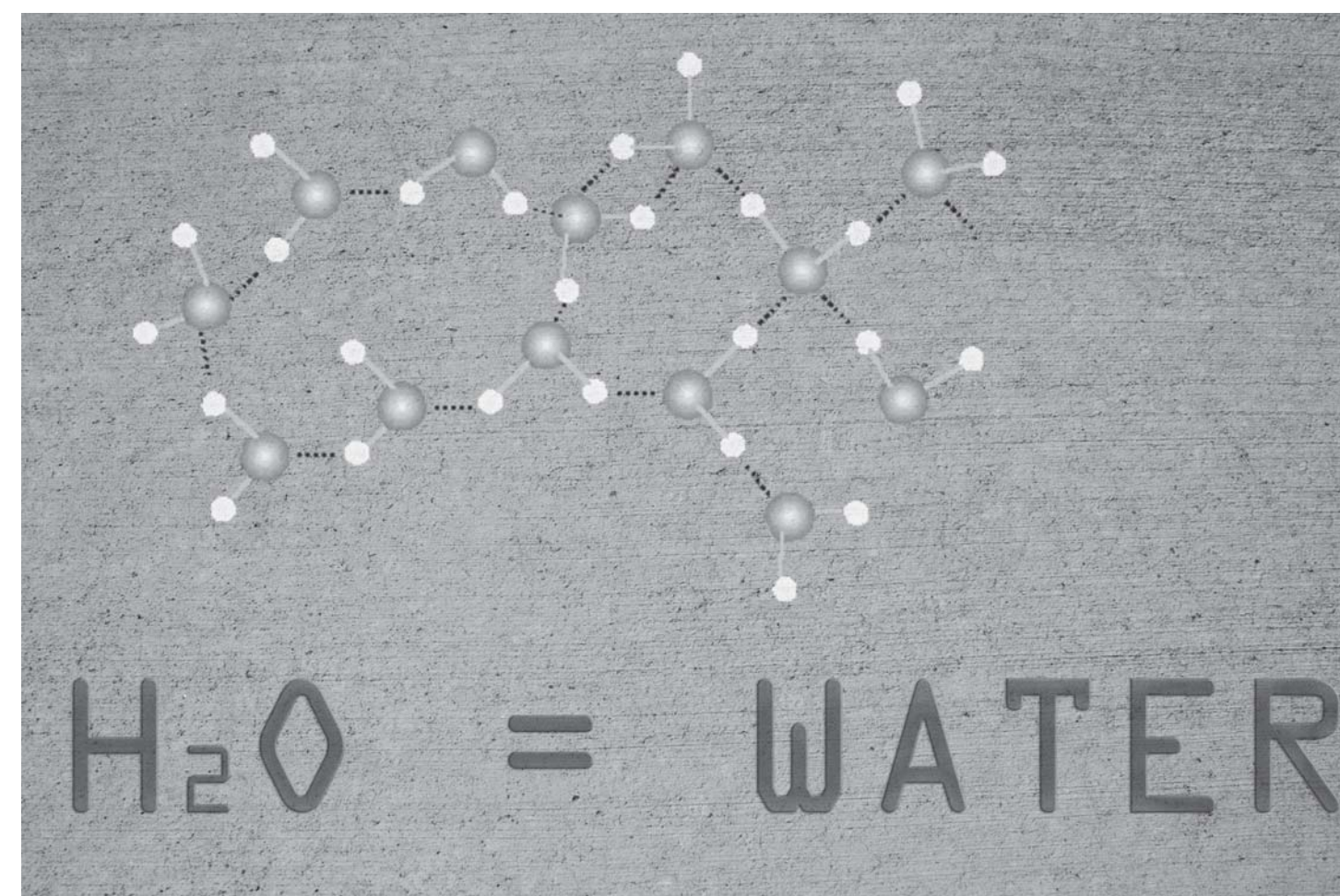
Sculpture: Playful Element



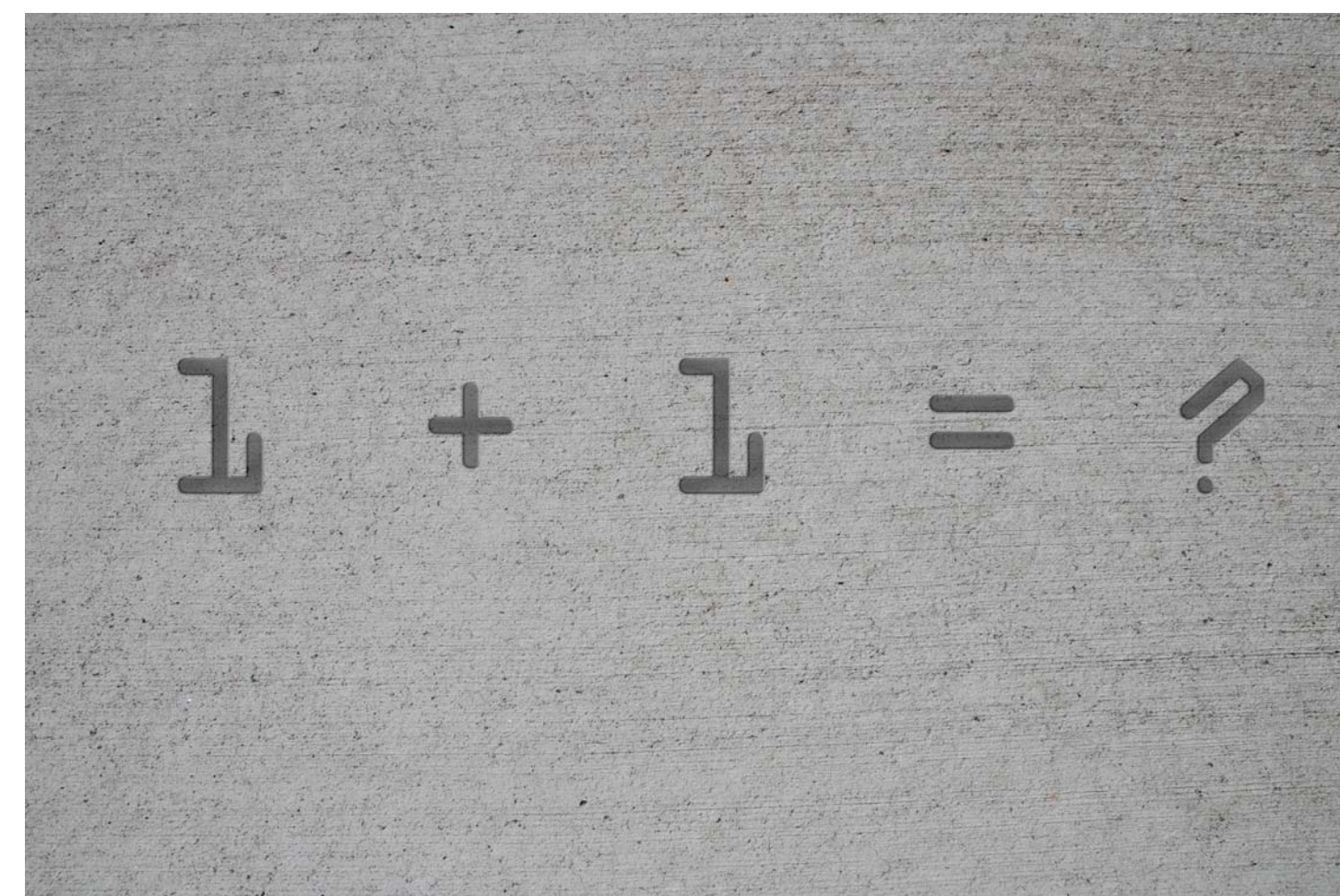
Sculpture: Artful Seating



Poetry



Academic Teachings



MAY PARK RENOVATION: PUBLIC ART

JULY 28, 2016

Project Supervisor: Alice Messer | Project Manager: Cheeneng Yang
Contact: 651-266-6412 | 651-266-6414
Email: Alice.Messer@ci.stpaul.mn.us | Cheeneng.Yang@ci.stpaul.mn.us



NEXT MEETING:

August 25, 2016 | 5-7 PM
Public Open House

Hancock Recreation Center
1610 Hubbard Ave
Saint Paul MN 55104