



KEY IDEAS:

- Nature Theme
- Play space orientated away from oak trees
- Path loops around play area
- Plantings define play area
- Maintain open space

PLANT PALETTE



scotch pine



northern pin oak



sem false spirea



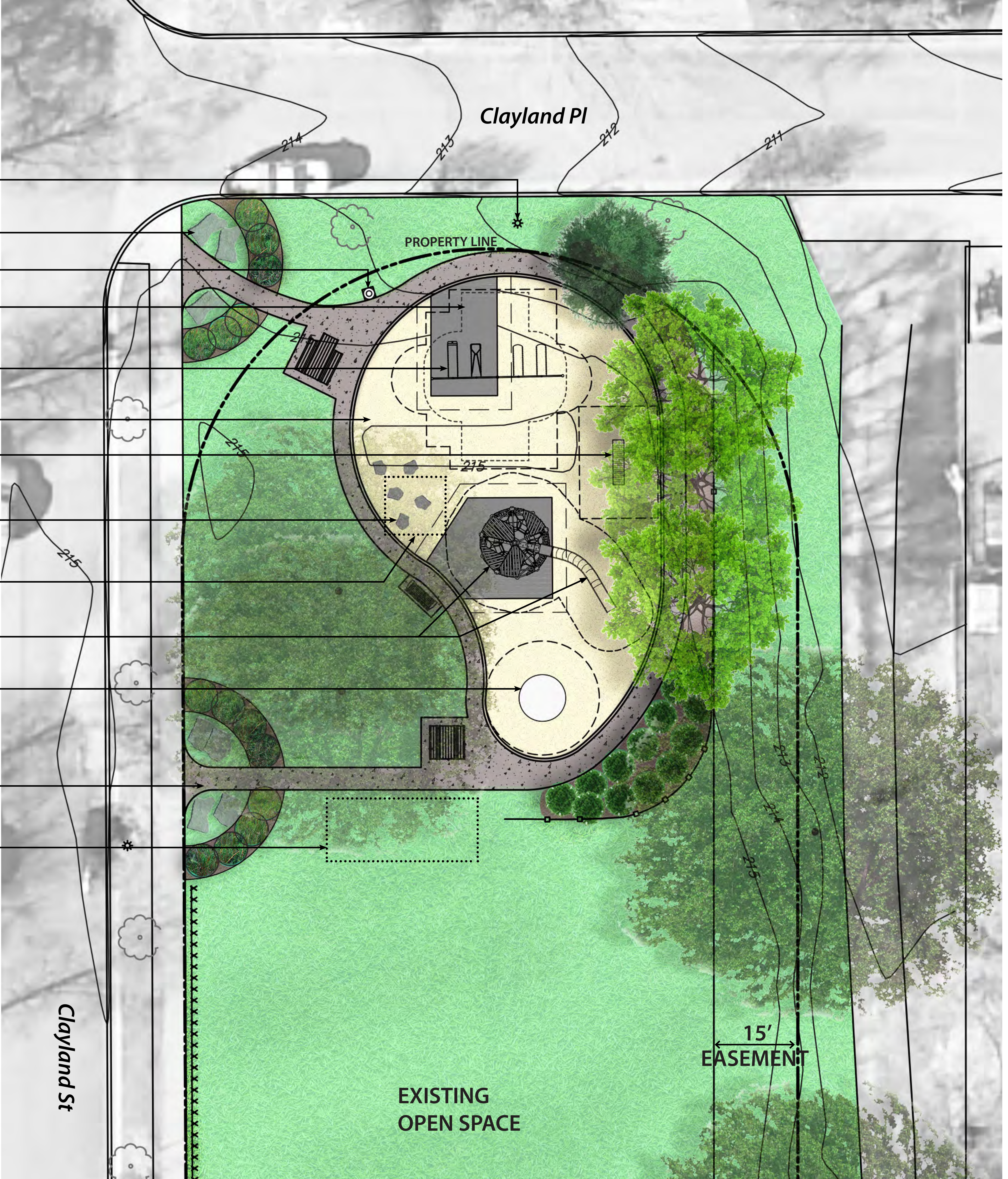
'blue' little blue stem

MAY PARK RENOVATION: FINAL CONCEPT

AUGUST 25, 2016

Project Supervisor: Alice Messer | Project Manager: Cheeneng Yang
 Contact: 651-266-6412 | 651-266-6414
 Email: Alice.Messer@ci.stpaul.mn.us | Cheeneng.Yang@ci.stpaul.mn.us

- EXISTING STREET LIGHT
- LARGE BOULDERS
- TRASH RECEPTACLE
- RUBBER SURFACING
- SWING SET
- SAND
- TRADITIONAL MONKEY BAR
- SAND PLAY W/ROCKS
- PLAYFUL ELEMENT OPTION
- WHIMSICAL HOUSE W/SLIDE
- EXISTING MERRY-GO-ROUND
- To remain in current location
- POETRY OPTION
- Poetry along pathway
- SEAT WALL OPTION
- Location for seat wall



PLAY ELEMENTS



merry-go-round



traditional monkey bar



whimsical-house w/slide



sand play

Which swing element do you prefer?
(Place your dot on one)



traditional swing set



seat swing

MAY PARK RENOVATION: FINAL CONCEPT ENLARGEMENT

AUGUST 25, 2016

Project Supervisor: Alice Messer | Project Manager: Cheeneng Yang
Contact: 651-266-6412 | 651-266-6414
Email: Alice.Messer@ci.stpaul.mn.us | Cheeneng.Yang@ci.stpaul.mn.us



Which one do you prefer? *(Place your dot on one)*



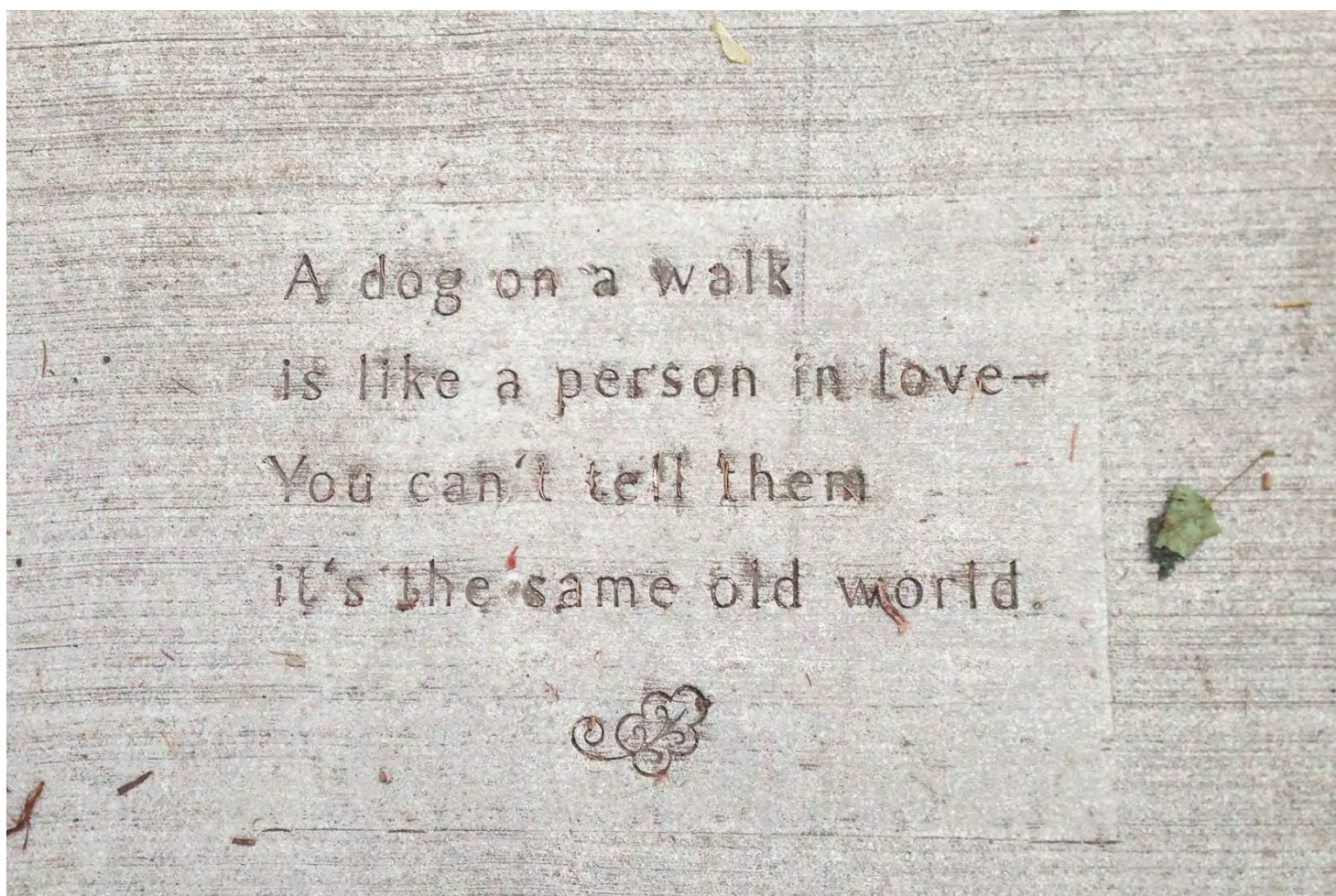
Playful Element

An interactive art located in the sand play area.



Artful Seating

A creative way to sit and lounge at the park.



Neighborhood Poetry

Poems written by the May Park community engraved into the walkway.