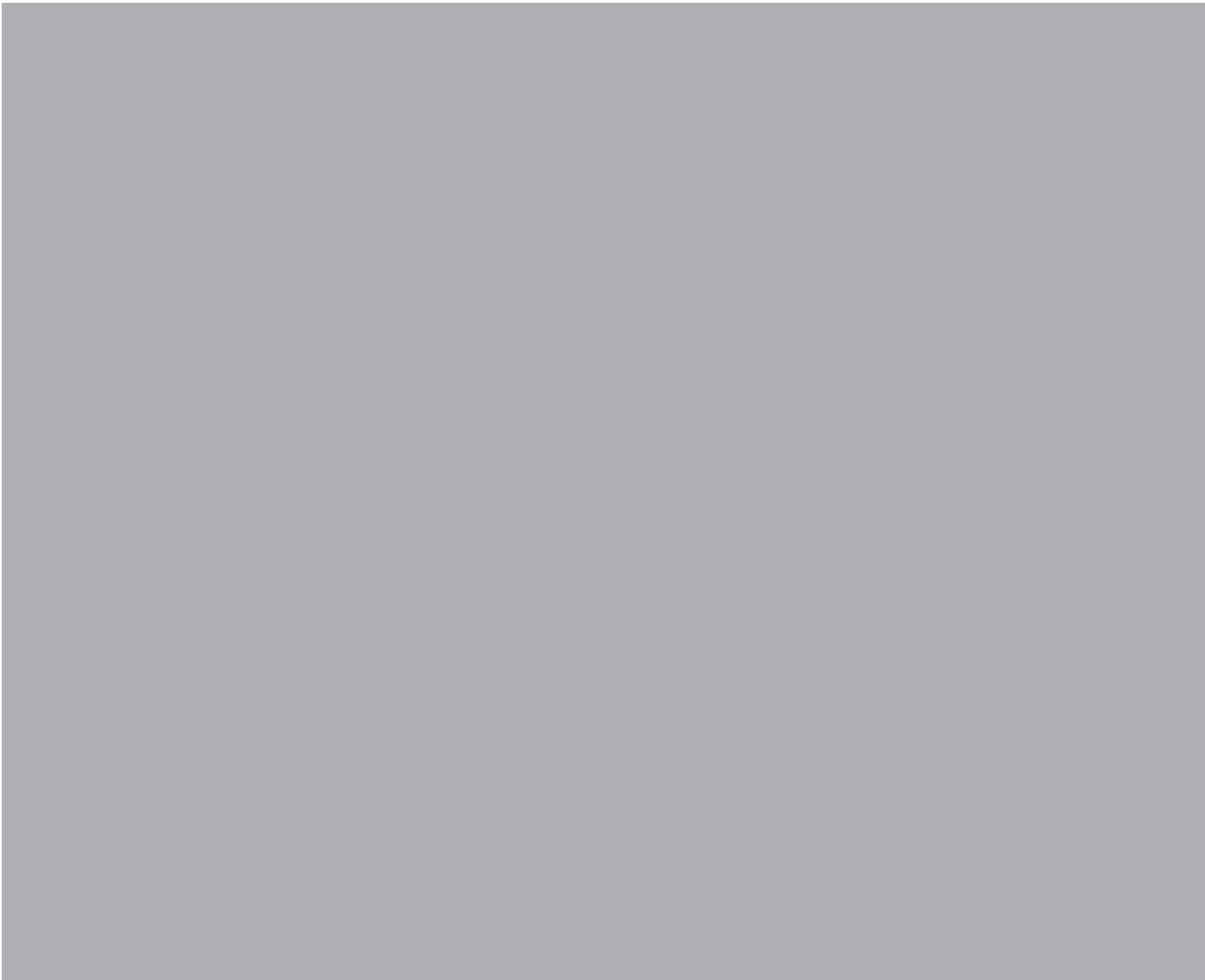


McQuillan Park Play Area Improvements 2016

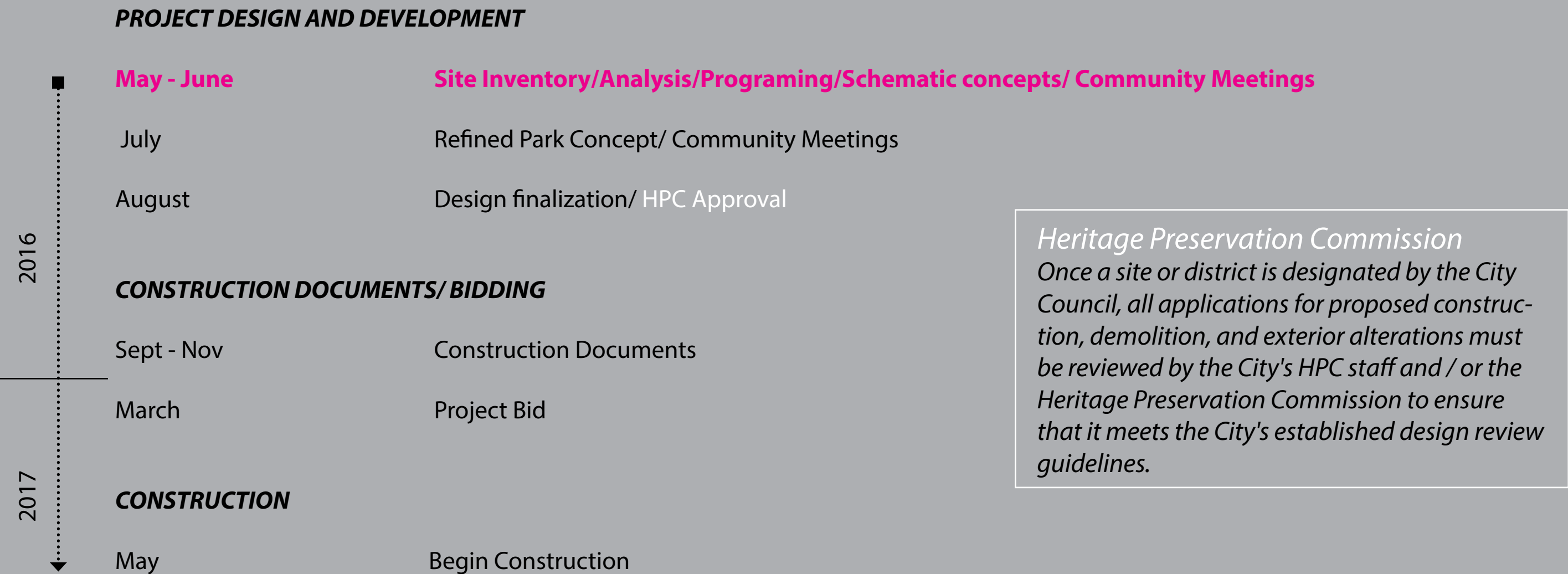


Community Meeting # 1



PROJECT INTRODUCTION

PROJECT SCHEDULE



ONLINE SURVEY RESULTS

An on-line survey is available from May to July 2016 for community members to give their feedback on the play area and site improvements of McQuillan Park. 80 people have participated until today. 12% of them live adjacent to the park, 45% of them live within one block and 5 % live further.

Q: Provide one word that describes McQuillan Park

Convenient Love Park Nice Community Green
Quaint Cozy Neighborhood Neighborly
Tennis Relaxing Friendly Sweet

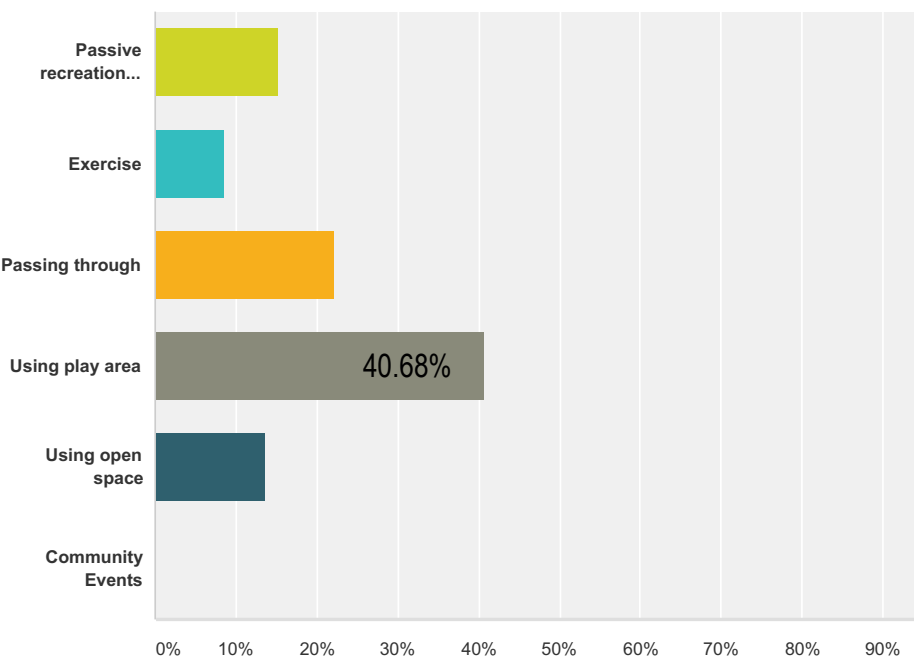
Q: What do you like about the park?

Family Slide Park Benches Kids Seeing Location
Mixed Trees Shade Tennis Court
Small Size Play Community Green Space Distance
Open Space Swings Neighborhood

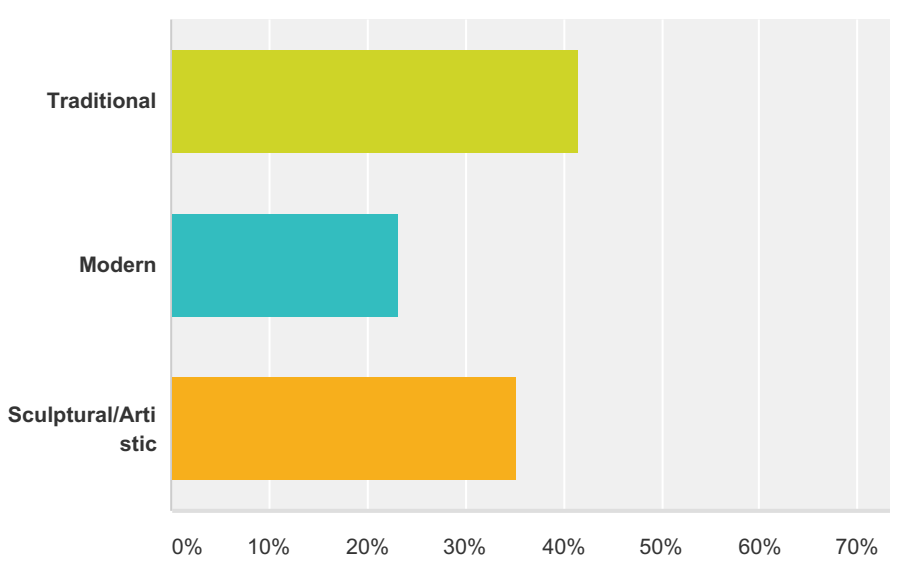
Q: What would you like to improve?

Lighting Resurfaced Picnic Tables Adults Kids Water
Play Flowers Tennis Court Landscaping
Park Exercise Space Young
Playground Equipment Upgrade

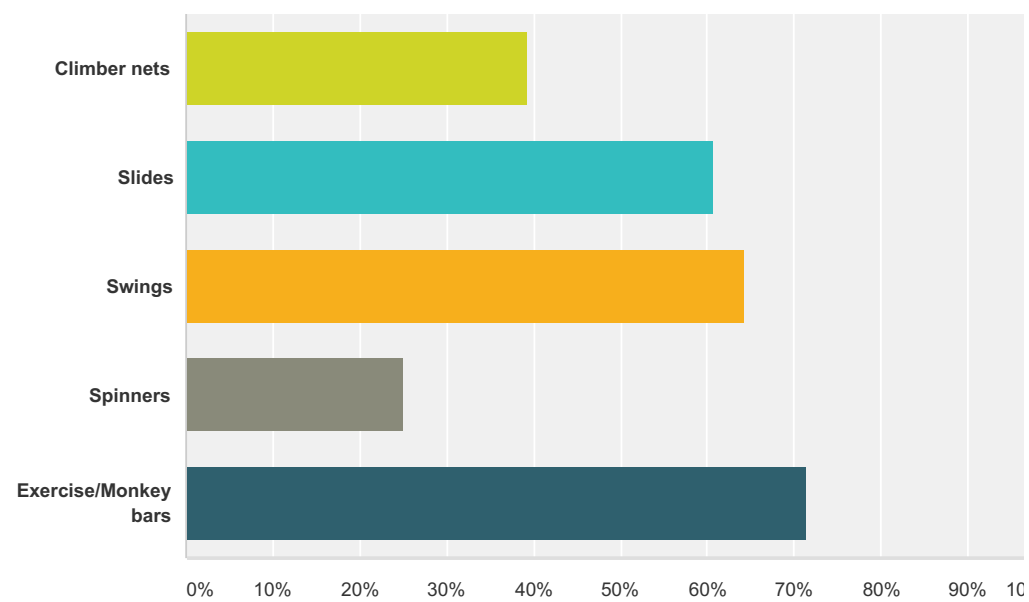
Q: What is your favorite thing to do at the park?



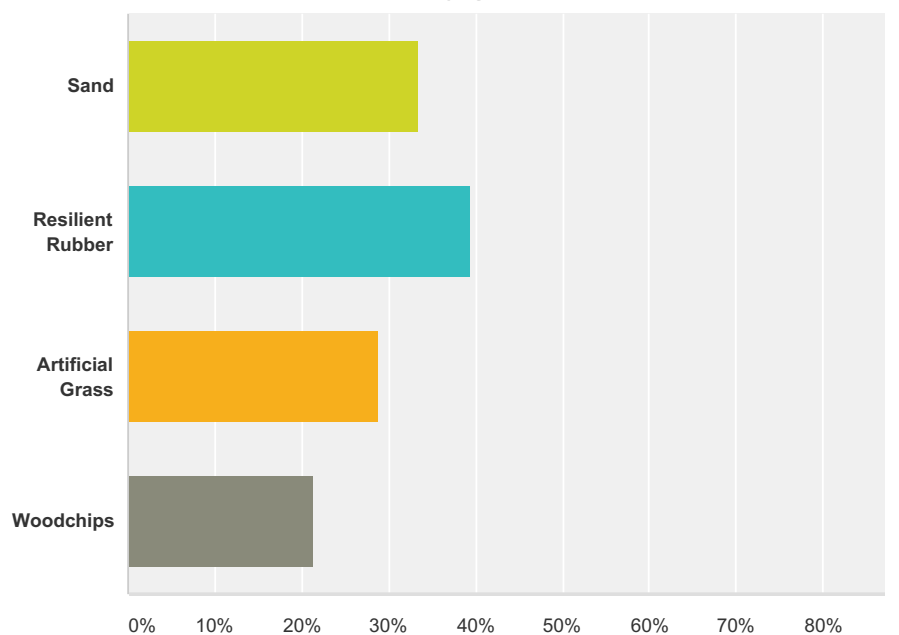
Q: What style of play structure do you prefer?



Q: What type of play elements do you prefer?



Q: What type of surface would you like to see on the playground?



COMMUNITY INPUT SUMMARY

What community like about McQuillan Park:

- Green open space
- Trees
- Tennis Court
- Gathering space
- Location
- Place for children to play
- Shaded areas

What community would like to improve:

- Play Structure for older kids
- Lighting
- Tennis Court condition
- Swings
- Add Picnic tables
- Landscaping

Prefer play elements:

- 1 Exercise/Monkey bars
- 2 Swings
- 3 Slides
- 4 Climbing nets
- 5 Spinners

Prefer playground surface

- 1 Resilient rubber
- 2 Sand
- 3 Artificial grass
- 4 Wood-chips

Play Structure Style

- 1 Traditional
- 2 Sculptural
- 3 Modern

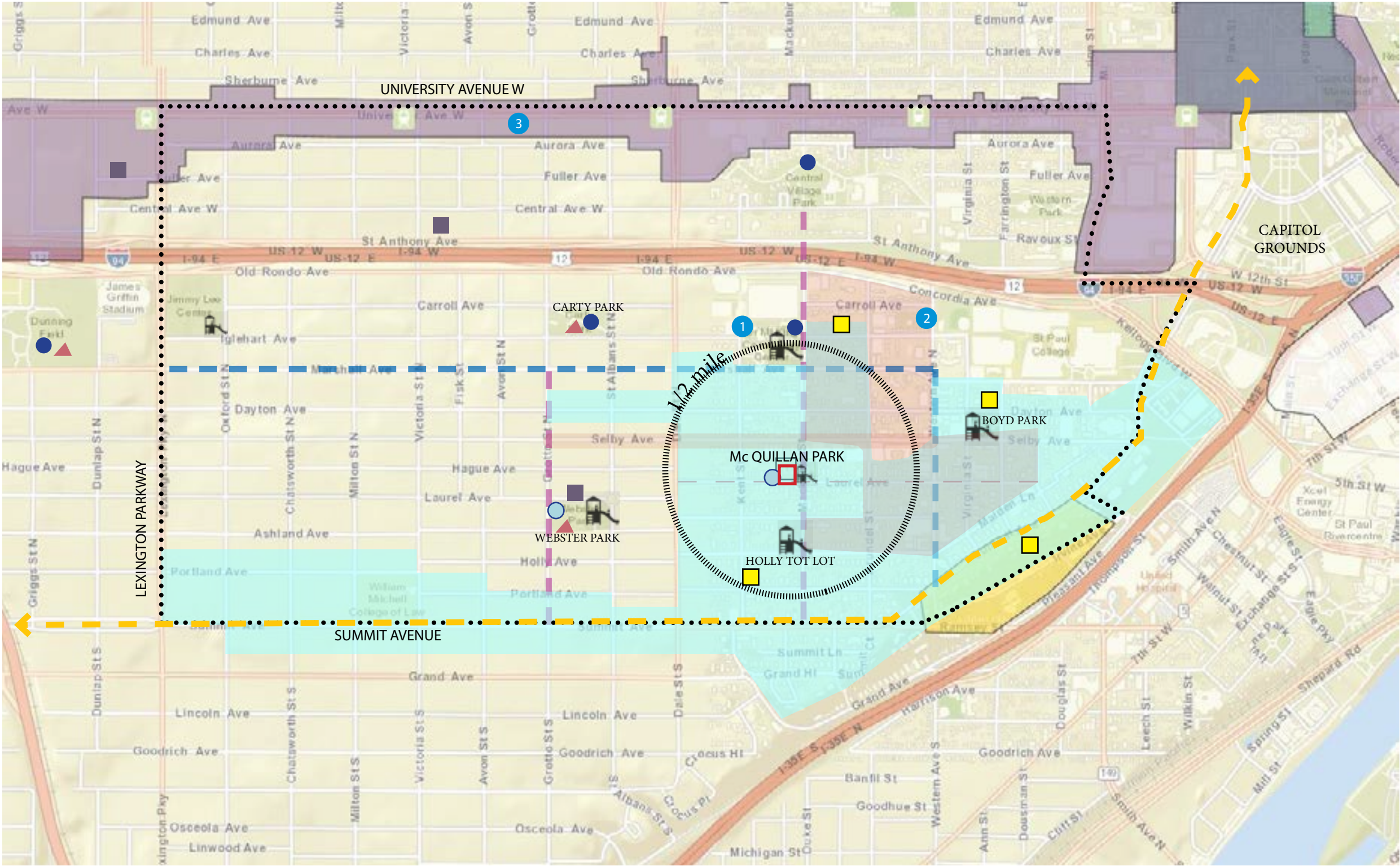
CONTEXT

SUMMIT UNIVERSITY NEIGHBORHOOD WARD 1 - DISTRICT 8

McQuillan Park: Laurel Avenue and Mackubin Street

54% people of color. White 46%, Black 36%
Asian 9%, Hispanic 5%

27% under the age of 20
22% middle age (45-64)



- Neighborhood Boundary
- Historic Hill Heritage Preservation District
- Green Line Corridor
- Irvine Ave. Small Area Plan
- PLAY AREAS
- COMMUNITY CENTERS
 - 1 MLK
 - 2 Hallie Q. Brown
 - 3 Aurora Saint Anthony Neighborhood Development Corporation
- Tennis court
- Tennis court recommended for removal
- Basketball court
- Commercial corridor
- On road bikeway
- Bicycle Boulevard
(Low volume, low-speed roadways optimized for bikes and pedestrians)
- Enhanced shared lane
- Lowest Neighborhood Mobility 4.0 or greater
- Childcare/ Preschool
- Schools

McQuillan Park Play Area Improvements 2016

INVENTORY AND ANALYSIS

PROJECT GOALS AND OBJECTIVES

ENHANCE ENVIRONMENT OF PLAY AREA


- DESIGN PLAY AREA TO SERVE RECREATIONAL NEEDS OF USERS WHILE RESPECTING THE EXISTING LANDSCAPE AND NEIGHBORHOOD
- PROVIDE APPROPRIATE PARK AMENITIES REFLECTING SUSTAINABILITY AND MAINTENANCE AND OPERATIONAL NEEDS
- RETAIN EXISTING VEGETATION AS APPROPRIATE
- ENHANCE PLANTING (SHRUBS, PERENNIALS, ETC.)
- PLAN PARK RENOVATION FOR THE NEXT 25 YEARS
- REFLECT HISTORIC PRESERVATION DISTRICT CHARACTER
- INTEGRATE PUBLIC ART
-
-

ENHANCE USERS HEALTH AND WELL -BEING

- PROVIDE ACTIVITIES FOR ALL AGES
- PROVIDE A BALANCE OF ACTIVE AND PASSIVE ACTIVITIES
- ENCOURAGE PARENT INTERACTION
- PROVIDE ACCESSIBILITY FOR ALL PARK USERS
-
-

ENHANCE PARK SAFETY AND SECURITY

- UTILIZE DURABLE PRODUCTS
- RETAIN SIGHT LINES
- EMPLOY CPTED (CRIME PREVENTION THROUGH ENVIRONMENTAL DESIGN) GUIDELINES IN DEVELOPMENT OF PARK PLAN
-
-



Arthur Joseph McQuillan (1895-1954), known as the “Mayor of Selby Avenue”. Well connected politically, he was DFL Chair for Ramsey County and a reliable source of patronage jobs for neighborhood residents in the Depression years. He is remembered as the first white master plumber in St. Paul to hire a black plumber.

INVENTORY AND ANALYSIS

HISTORIC BACKGROUND

Brief Neighborhood History

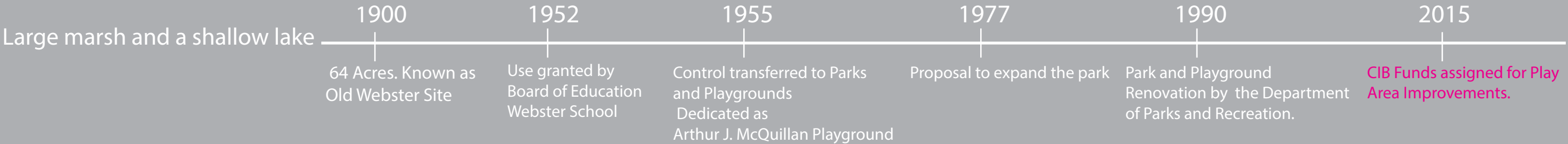
1850 Residents were farmers who share the same cultural value
1880 With Streetcar line , middle and working classes move into the neighborhood.
1900 Wealthy people moved into the Summit-university neighborhood.
1930 Rondo Avenue was at the heart of St. Paul's African-American community with long-time residents and new arrivals from the South and many black-owned businesses.
1960 Construction of I-94 . Hundreds of homes and businesses were demolished and the freeway stood on what was once Rondo Avenue.
LAST DECADES The neighborhood became more diverse.
The immigration has been an important factor that has shaped the identity of this community.

Historic Hill Heritage Preservation District

Area is identified with people who significantly contributed to the culture and development of Saint Paul. It contains the work of several influential architects, innovative and significant architectural design.
Hill District contains the largest concentration of excellent nineteenth-century architecture in Minnesota.



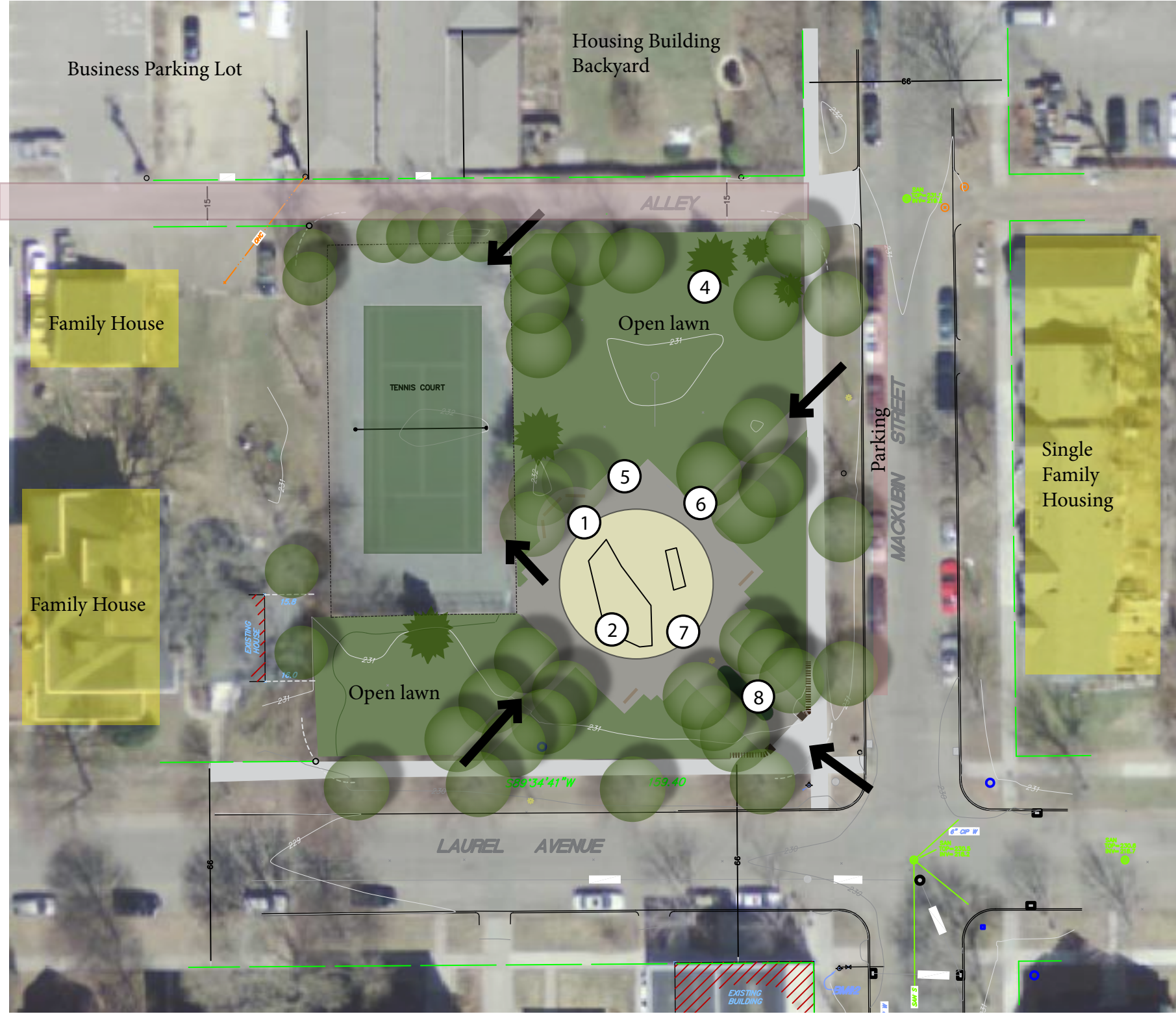
McQuillan Park Timeline



McQuillan Park Play Area Improvements 2016

INVENTORY AND ANALYSIS

EXISTING CONDITIONS



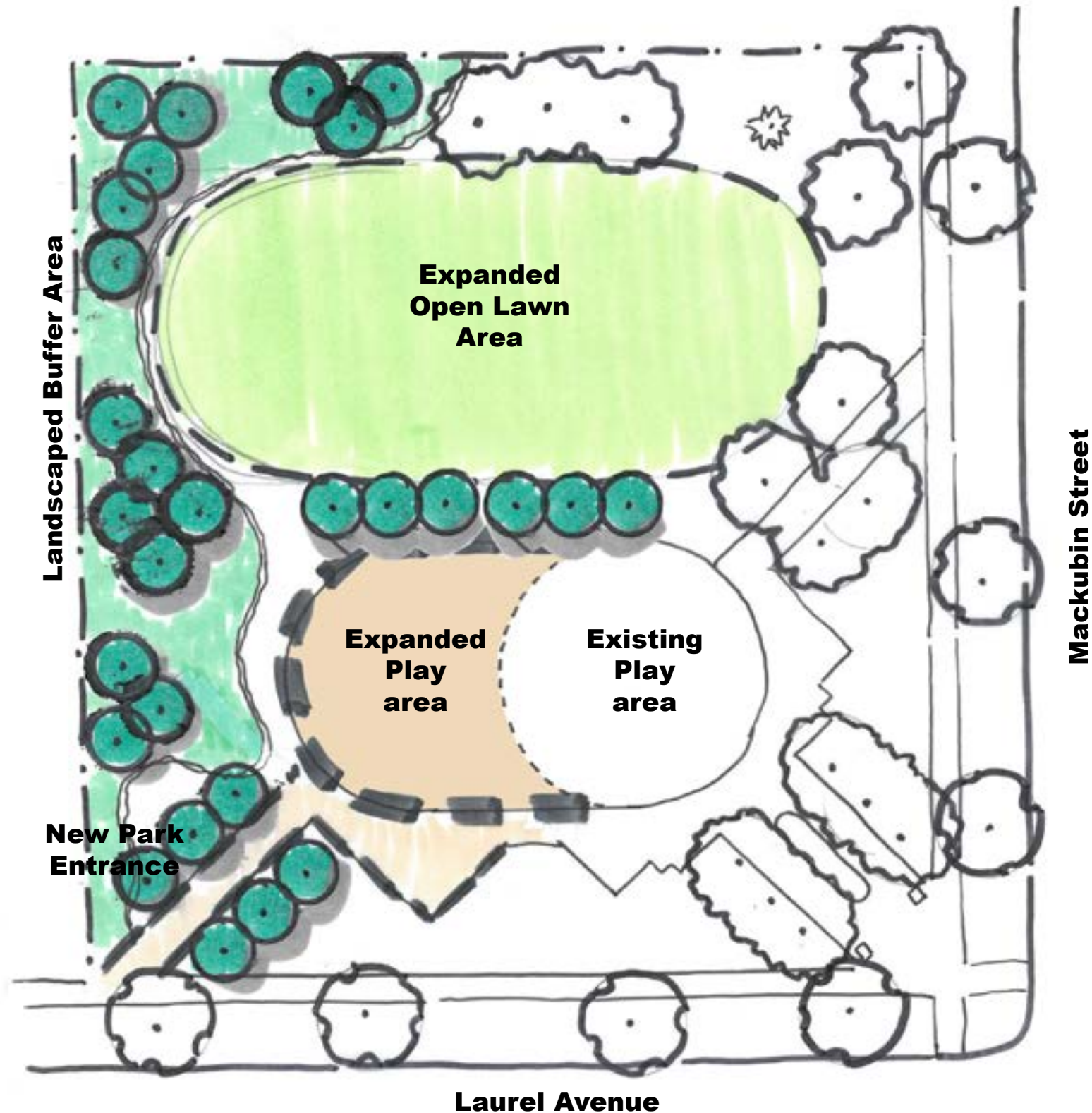
The existing play structure is for 5-12 years age group and a swing bay with a couple of toddler swings.



- Expansion of the play area
- Expansion of the open lawn for more play space
- Addition of a picnic area
- Addition of natural play elements like grass mounds
- Addition of planting beds and gardens
- Maintain Victorian style of the Neighborhood with appropriate materials and design elements
- Encourage connection to bike boulevard

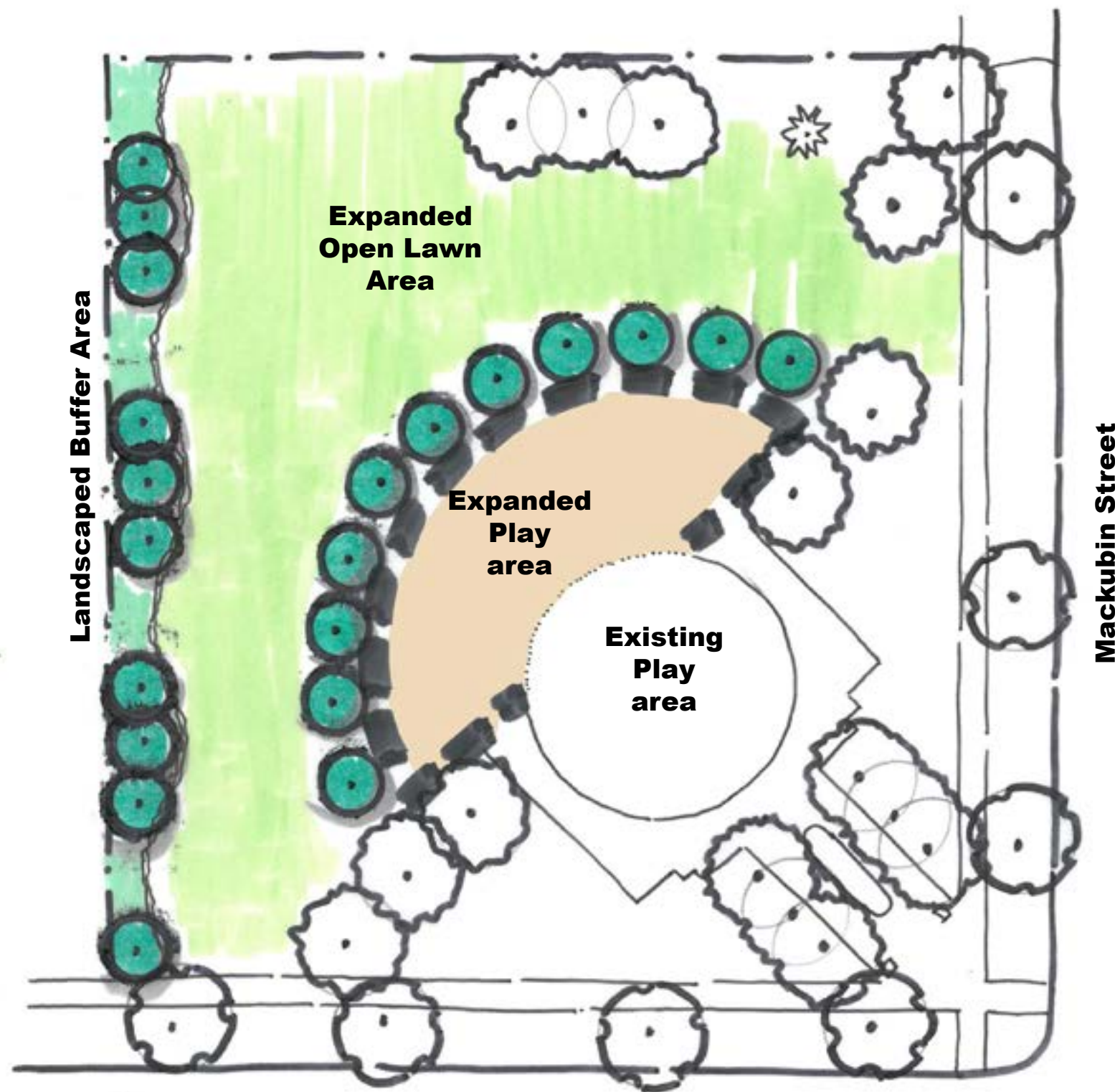


DESIGN CONCEPTS



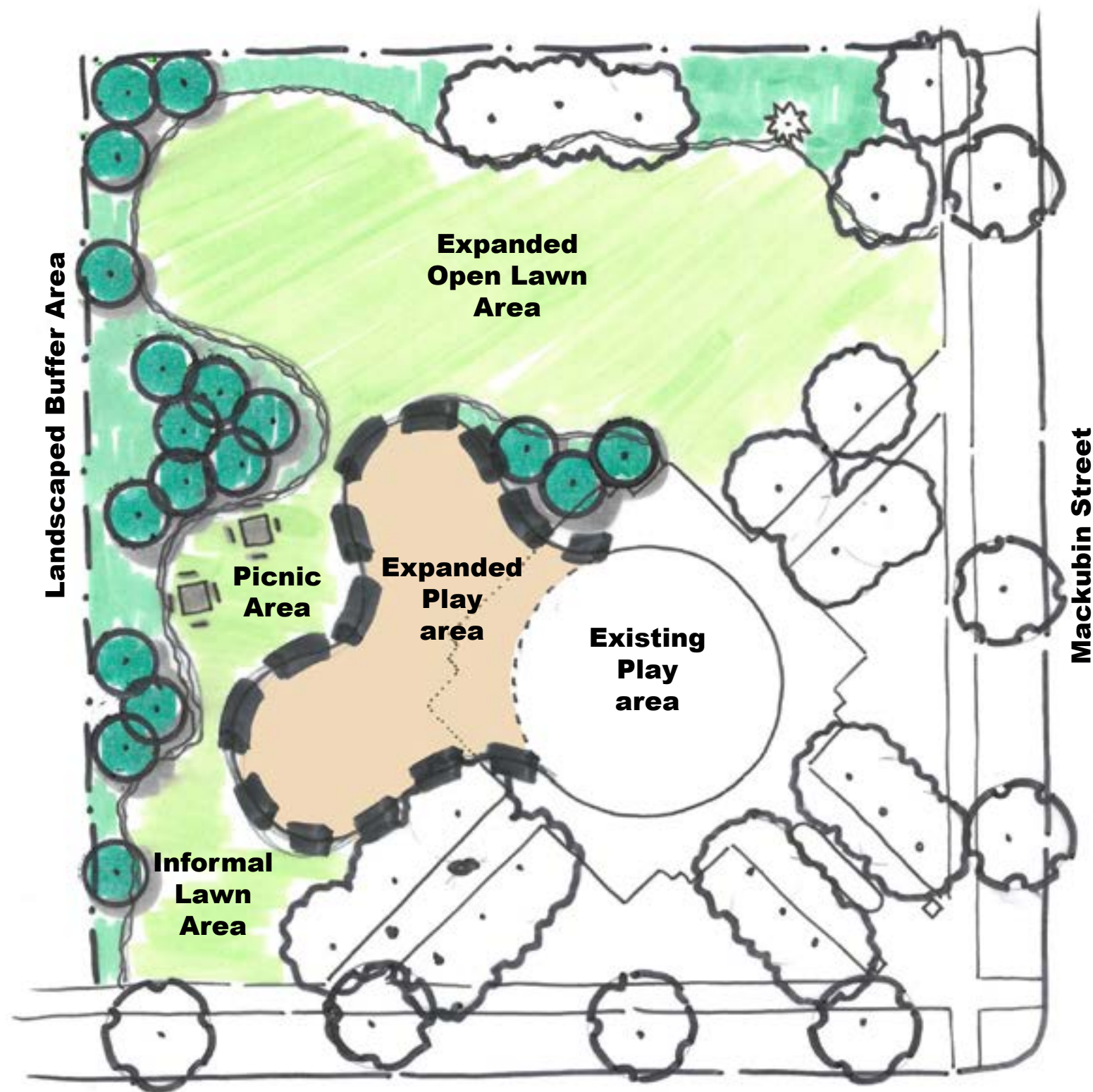
Concept A

- Relocated park entrance on Laurel Avenue
- Expanded play area
- Expanded 'Formal' open lawn area



Concept B

- Provide single park access from entrances on Laurel and Mackubin
- Expanded play area
- Expanded informal open lawn area
- Landscaped buffer along western edge of park



Concept C

- Retain all existing park entrances
- Expanded play area - informal layout
- Expanded informal open lawn area
- Landscaped buffer along western edge of park
- Informal lawn area with picnic tables



PLAY EQUIPMENT

PLAY EQUIPMENT STYLES

TRADITIONAL



McQuillan Park Play Area
Improvements 2016

PLAY EQUIPMENT

PLAY EQUIPMENT STYLES

MODERN



McQuillan Park Play Area
Improvements 2016

PLAY EQUIPMENT

PLAY EQUIPMENT STYLES

SCULPTURAL / ARTISTIC



McQuillan Park Play Area
Improvements 2016

PLAY EQUIPMENT

OTHER PLAY ELEMENTS

CLIMBING STRUCTURES



GRASS MOUNDS



ROPE COURSE



SWINGS





PUBLIC ART

WHAT TYPE OF PUBLIC ART WOULD YOU LIKE TO SEE AT THE PARK?

Sculpture

Interactive art/ sculpture

Children's Art

Reflect the history of the neighborhood

Sculptural play equipment

Sidewalk poetry

PUBLIC ART PROCESS

Saint Paul Public Art Ordinance

1% of CIB funding = \$2,610

Artist selection:

- Request for Qualifications
- Direct invitation

LOCAL ARTISTS RECOMMENDED BY THE COMMUNITY



Brad Kaspari



Sara Udvig



Seitu Jones



Kinji Akagawa



COMMENTS AND DISCUSSION