



Cherokee Regional Park Play Area Improvements

November 17, 2016

Project Manager: Cheeneng Yang | Alice Messer
Contact: 651-266-6414 | 651-266-6412
Email: Cheeneng.Yang@ci.stpaul.mn.us | Alice.Messer@ci.stpaul.mn.us



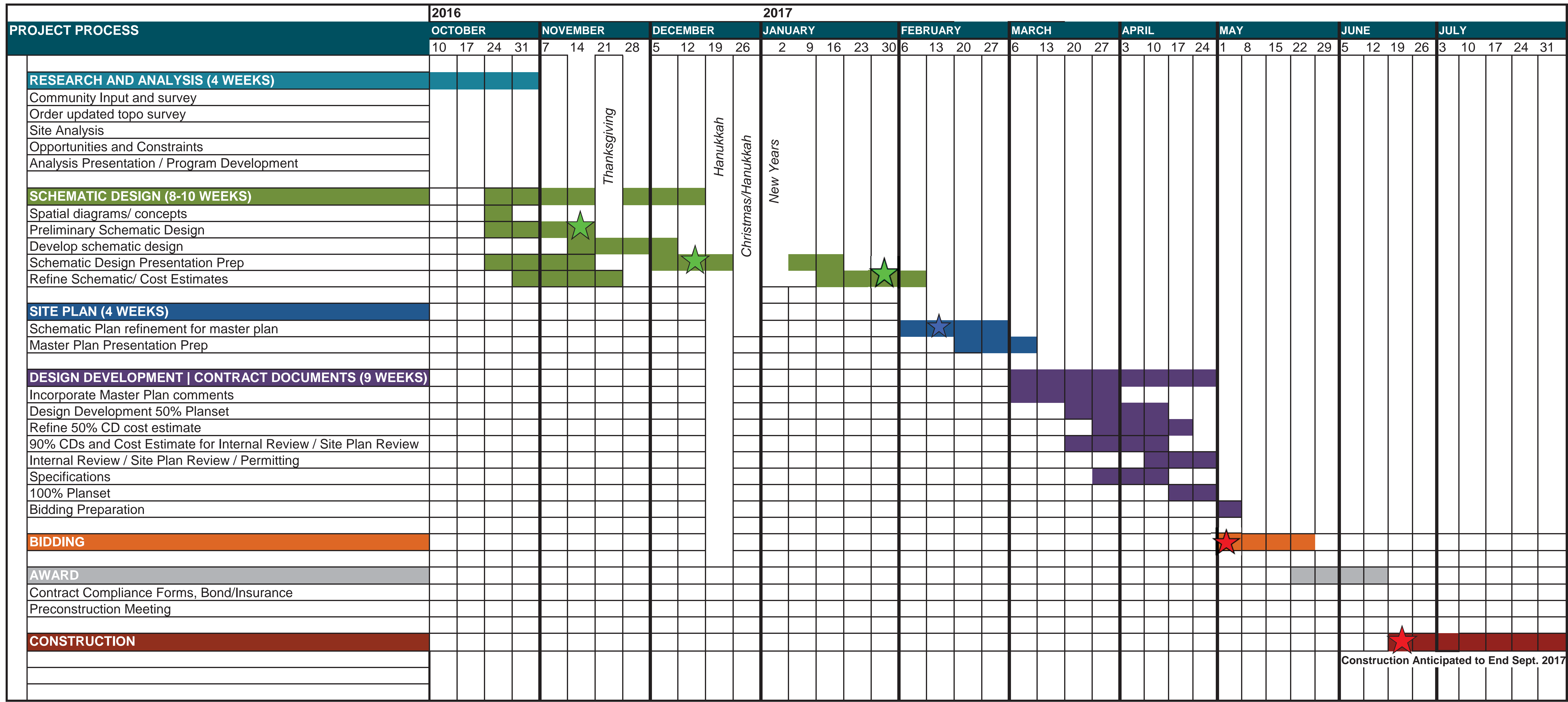
**Cherokee Regional Park Play Area Improvements
Community Meeting #1
Thursday, November 17, 2016
Agenda**

1. Introductions (5 mins.)
2. Design Advisory Task force (5 mins.)
 - a) Roles & Expectations
2. Project Introduction (25 mins.)
 - a) Site Context
 - b) Opportunities & Constraints
3. Play Area Concepts (40 mins.)
4. Discussion/Questions (40 mins.)
5. Next Meeting (5 mins.)



Project Scope:

The City of Saint Paul Department of Parks and Recreation has secured \$342,000 from the Legacy Grant for play area improvements at Cherokee Regional Park. The project scope is to renovate the existing play equipment replacing it with new play equipment.



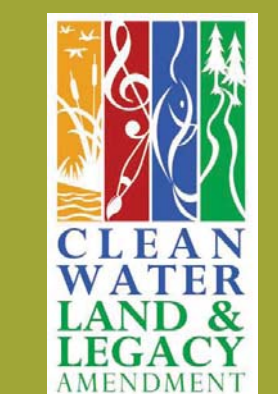
- ★ Design Advisory Meetings
- ★ Community Open House
- ★ Important milestones

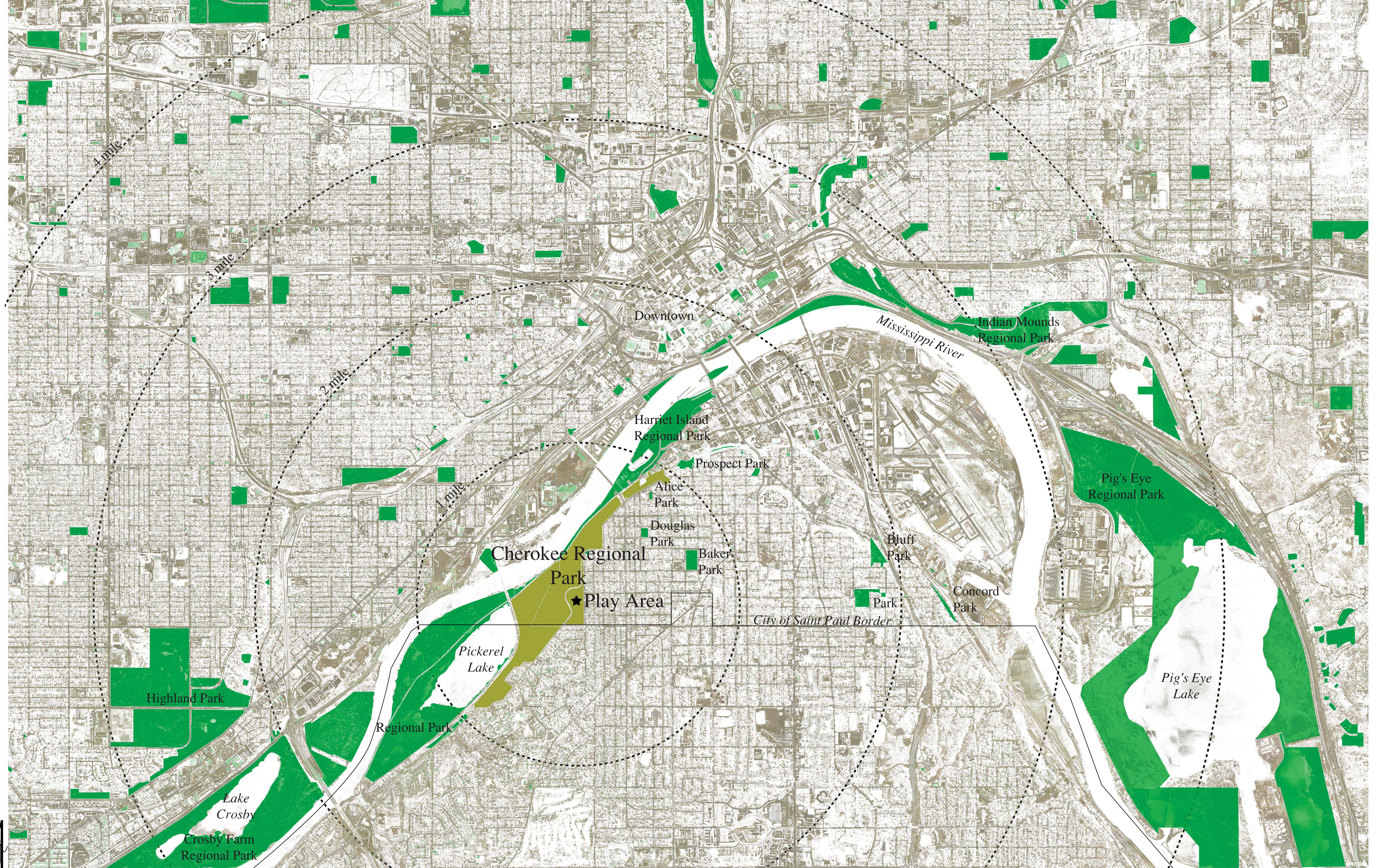
Cherokee Regional Park Play Area Improvements

-Project Scope & Schedule-

November 17, 2016

Project Manager: Cheeneng Yang | Alice Messer
 Contact: 651-266-6414 | 651-266-6412
 Email: Cheeneng.Yang@ci.stpaul.mn.us | Alice.Messer@ci.stpaul.mn.us





Cherokee Regional Park Play Area Improvements

-Site Context-

November 17, 2016

Project Manager: Cheeneng Yang | Alice Messer
 Contact: 651-266-6414 | 651-266-6412
 Email: Cheeneng.Yang@ci.stpaul.mn.us | Alice.Messer@ci.stpaul.mn.us





Existing Restroom/
Water Fountain

Play Area

Existing
Picnic Shelter

Infant Swing Bay

Swing Bay

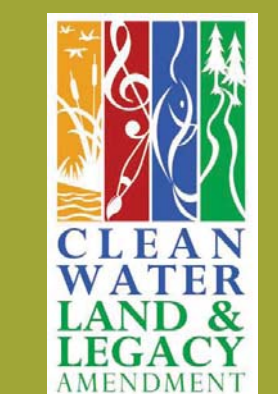


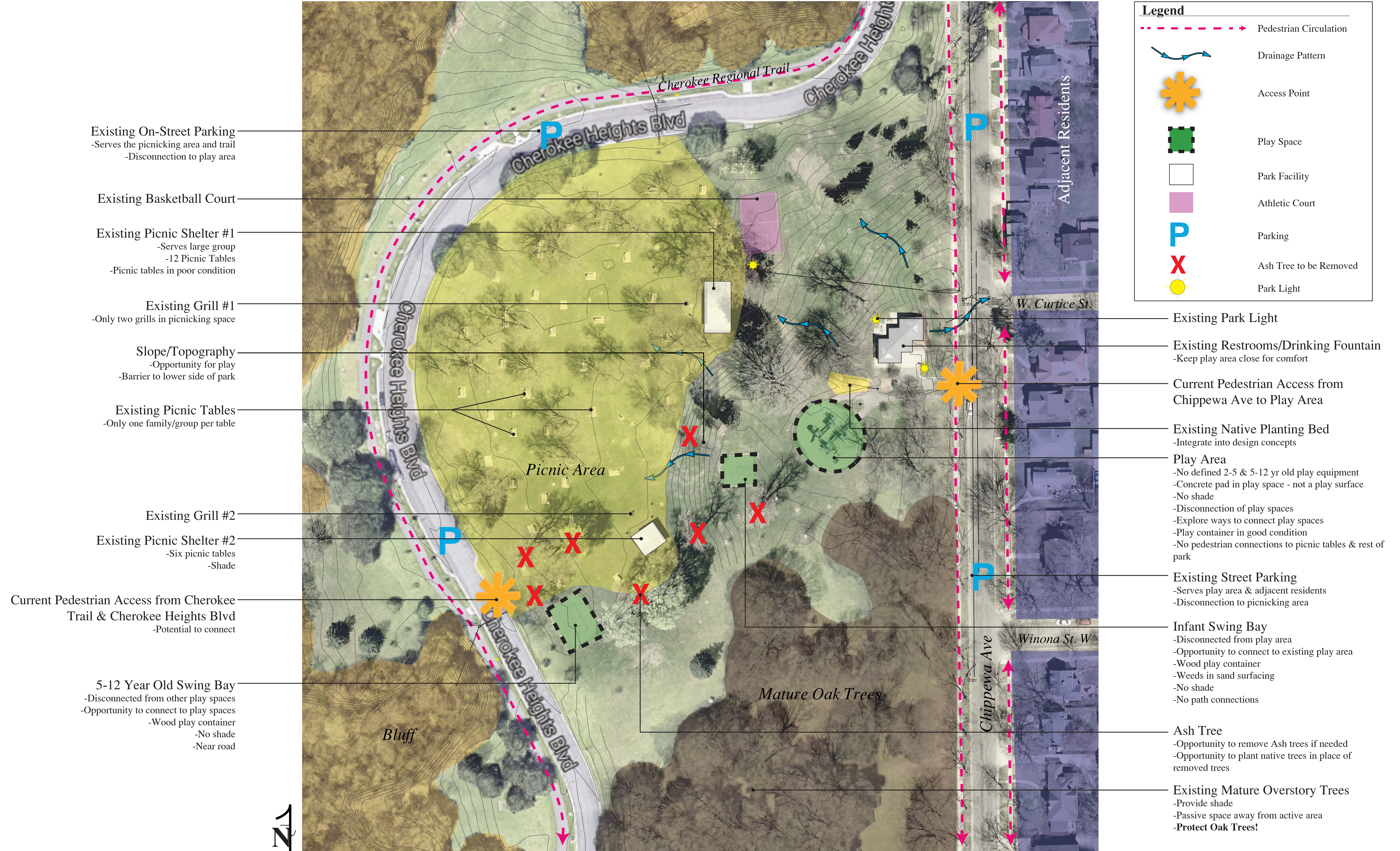
Cherokee Regional Park Play Area Improvements

November 17, 2016

-Existing Conditions-

Project Manager: Cheeneng Yang | Alice Messer
Contact: 651-266-6414 | 651-266-6412
Email: Cheeneng.Yang@ci.stpaul.mn.us | Alice.Messer@ci.stpaul.mn.us





Existing On-Street Parking
 -Serves the picnicking area and trail
 -Disconnection to play area

Existing Basketball Court

Existing Picnic Shelter #1
 -Serves large group
 -12 Picnic Tables
 -Picnic tables in poor condition

Existing Grill #1
 -Only two grills in picnicking space

Slope/Topography
 -Opportunity for play
 -Barrier to lower side of park

Existing Picnic Tables
 -Only one family/group per table

Existing Grill #2

Existing Picnic Shelter #2
 -Six picnic tables
 -Shade

Current Pedestrian Access from Cherokee Trail & Cherokee Heights Blvd
 -Potential to connect

5-12 Year Old Swing Bay
 -Disconnected from other play spaces
 -Opportunity to connect to play spaces
 -Wood play container
 -No shade
 -Near road

Legend

- Pedestrian Circulation
- Drainage Pattern
- Access Point
- Play Space
- Park Facility
- Athletic Court
- Parking
- Ash Tree to be Removed
- Park Light

Existing Park Light

Existing Restrooms/Drinking Fountain
 -Keep play area close for comfort

Current Pedestrian Access from Chippewa Ave to Play Area

Existing Native Planting Bed
 -Integrate into design concepts

Play Area
 -No defined 2-5 & 5-12 yr old play equipment
 -Concrete pad in play space - not a play surface
 -No shade
 -Disconnection of play spaces
 -Explore ways to connect play spaces
 -Play container in good condition
 -No pedestrian connections to picnic tables & rest of park

Existing Street Parking
 -Serves play area & adjacent residents
 -Disconnection to picnicking area

Infant Swing Bay
 -Disconnected from play area
 -Opportunity to connect to existing play area
 -Wood play container
 -Weeds in sand surfacing
 -No shade
 -No path connections

Ash Tree
 -Opportunity to remove Ash trees if needed
 -Opportunity to plant native trees in place of removed trees

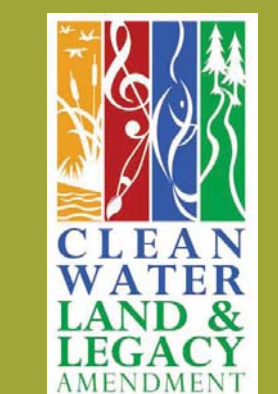
Existing Mature Overstory Trees
 -Provide shade
 -Passive space away from active area
 -Protect Oak Trees!

Cherokee Regional Park Play Area Improvements

November 17, 2016

-Opportunities & Constraints-

Project Manager: Cheeneng Yang | Alice Messer
 Contact: 651-266-6414 | 651-266-6412
 Email: Cheeneng.Yang@ci.stpaul.mn.us | Alice.Messer@ci.stpaul.mn.us



Survey Results: 50 individual responses

44% visit park weekly
58% live within half-a-mile
72% walk to park
74% use playground
2-12 year old children are the main playground user

Like: Restrooms near by, accessibility, monkey bars, zip-line, slides, amount of seating, shade, the ramps, and close to homes.

58% would like to have the swings be with playground

Improve: Appropriate play equipment for different ages, more climbing, more seating, no sand

Play Type: Combination of play types (traditional/modern, tradition/net)

- Climbing (82%)
- Swinging (74%)
- Balancing (64%)
- Sliding (74%)

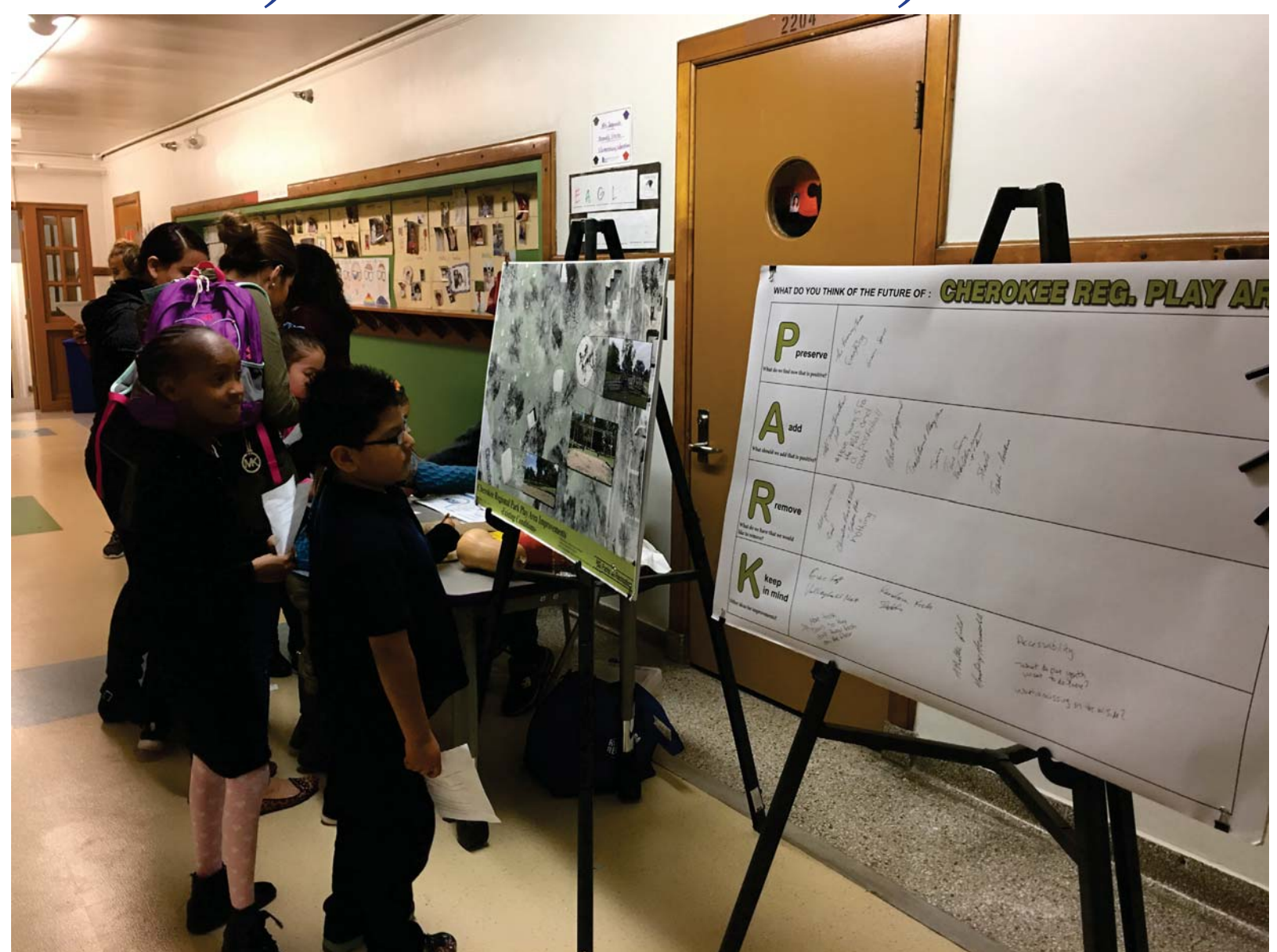
Public Art:

- Reflect the history, diversity, and culture
- Interactive Sculpture
- Mural on the restroom building

West Siders for Strong Schools - 10/26/2016

Preserve green space, trees, swings, pavilions, basketball court

Add fitness equipment, tire swings, more ramp structures, shade, water feature, rubber surfacing



Remove all picnic tables, sand, and Cherokee Heights Blvd.

Keep in mind volleyball nets, more trash receptacles, random rocks, sledding, accessibility, and bring swings closer to play area.

West Side Community Annual Meeting - 11/15/2016

Preserve different activities

Add safety swings for older children w/disabilities, more climbing elements, more trees along bluff, and skate park.

Keep in mind safety and maintaining park landscape, speed control on Cherokee Heights Blvd., and provide a view to the river valley.

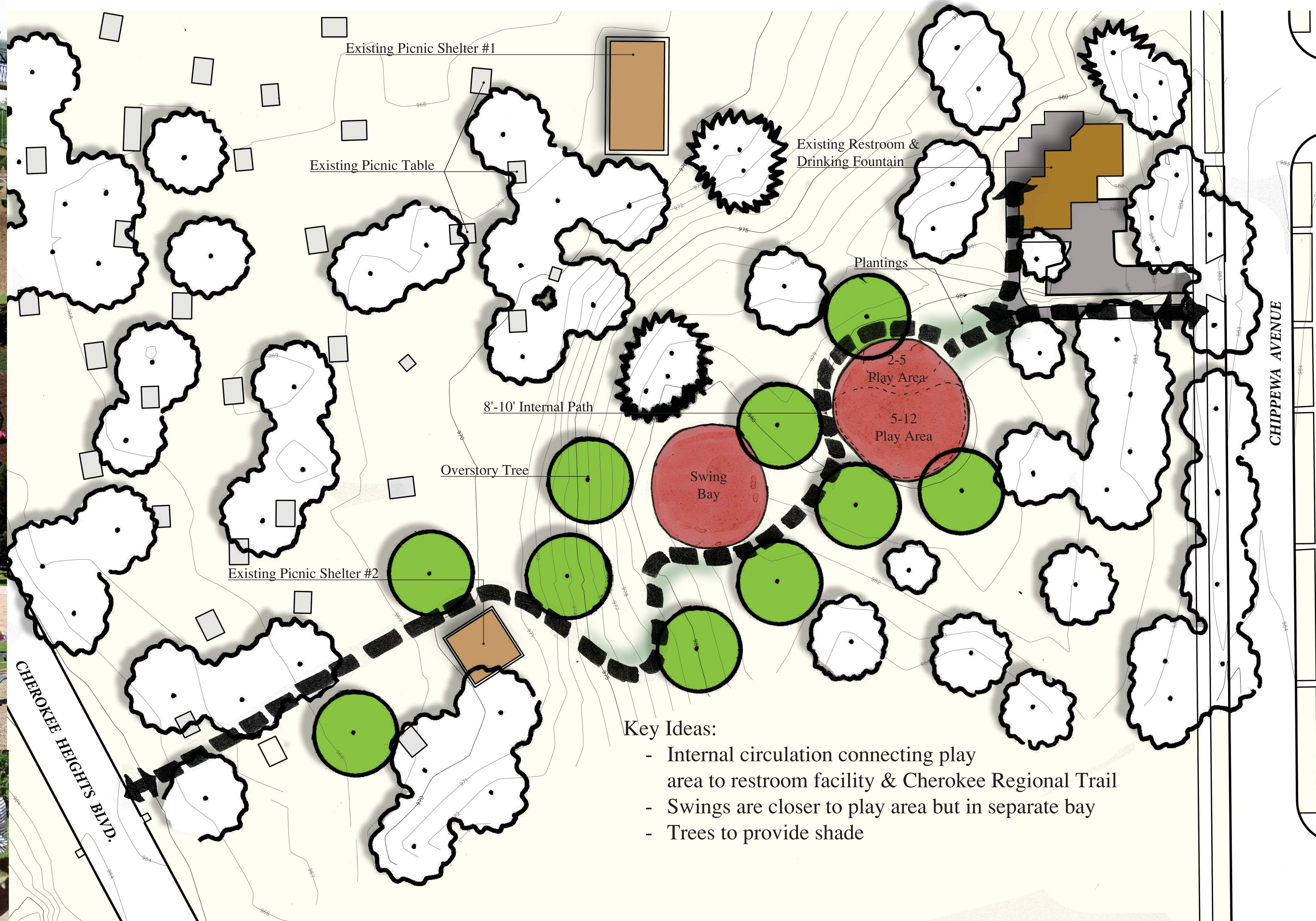


Cherokee Regional Park Play Area Improvements
-Community Response-

November 17, 2016

Project Manager: Cheeneng Yang | Alice Messer
Contact: 651-266-6414 | 651-266-6412
Email: Cheeneng.Yang@ci.stpaul.mn.us | Alice.Messer@ci.stpaul.mn.us





Key Ideas:

- Internal circulation connecting play area to restroom facility & Cherokee Regional Trail
- Swings are closer to play area but in separate bay
- Trees to provide shade

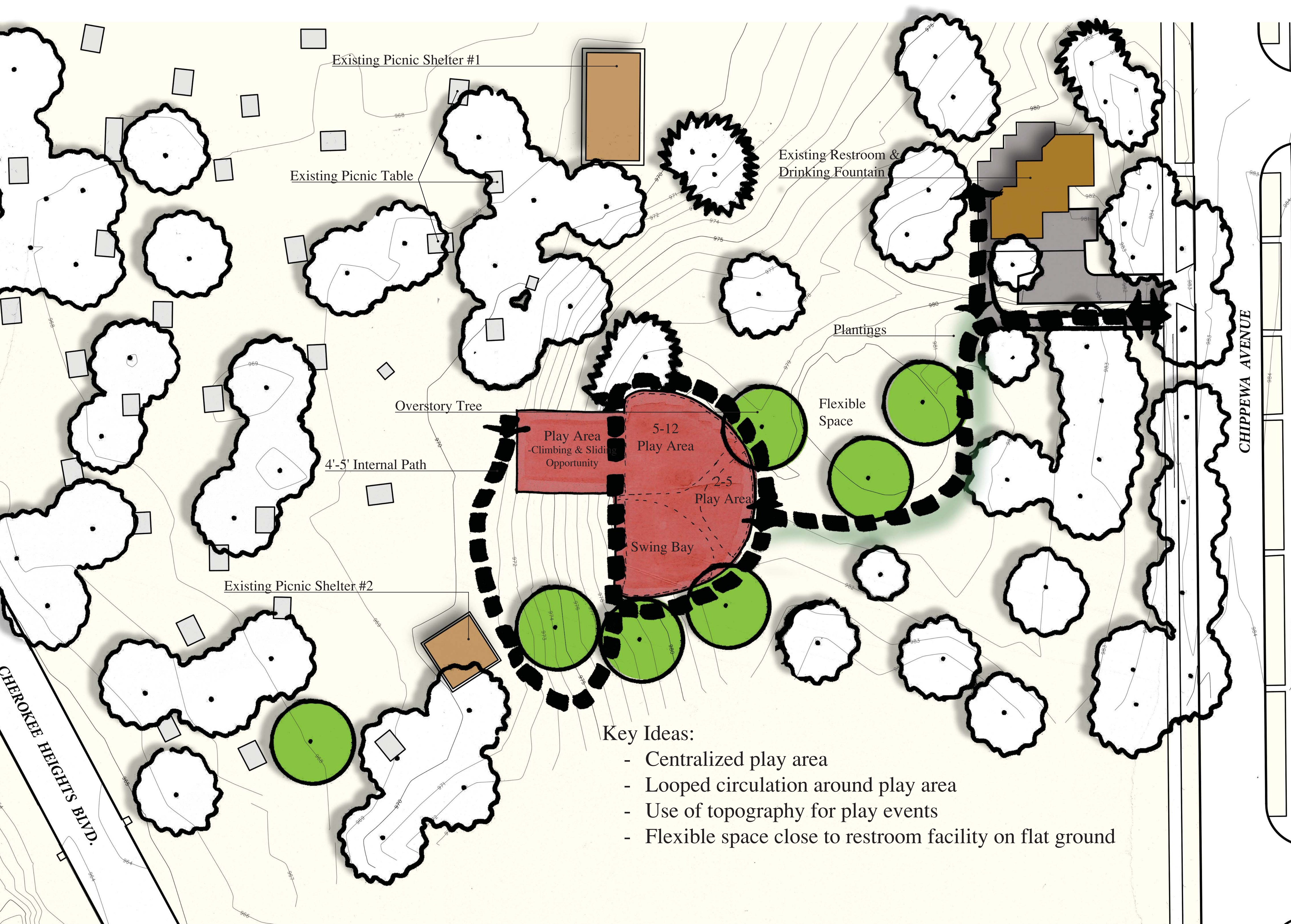
Cherokee Regional Park Play Area Improvements

-Concept A-

November 17, 2016

Project Manager: Cheeneng Yang | Alice Messer
 Contact: 651-266-6414 | 651-266-6412
 Email: Cheeneng.Yang@ci.stpaul.mn.us | Alice.Messer@ci.stpaul.mn.us





Key Ideas:

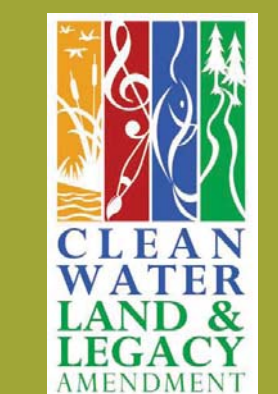
- Centralized play area
- Looped circulation around play area
- Use of topography for play events
- Flexible space close to restroom facility on flat ground

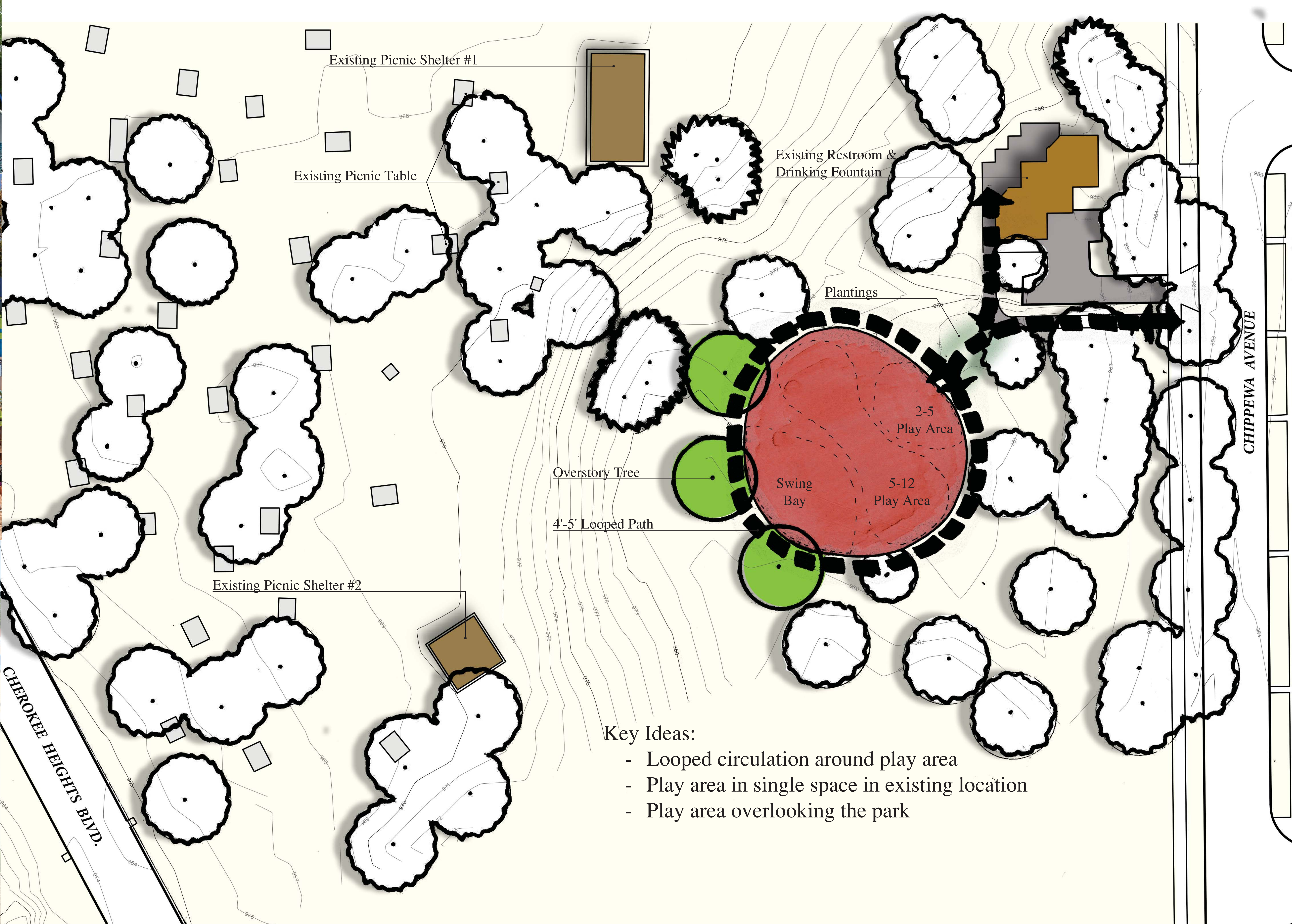
Cherokee Regional Park Play Area Improvements

-Concept B-

November 17, 2016

Project Manager: Cheeneng Yang | Alice Messer
 Contact: 651-266-6414 | 651-266-6412
 Email: Cheeneng.Yang@ci.stpaul.mn.us | Alice.Messer@ci.stpaul.mn.us





Key Ideas:

- Looped circulation around play area
- Play area in single space in existing location
- Play area overlooking the park

Cherokee Regional Park Play Area Improvements

-Concept C-

November 17, 2016

Project Manager: Cheeneng Yang | Alice Messer
 Contact: 651-266-6414 | 651-266-6412
 Email: Cheeneng.Yang@ci.stpaul.mn.us | Alice.Messer@ci.stpaul.mn.us



NEXT MEETING:

**Baker Park Recreation Center
6:00-8:00 PM**

Thursday, December 15, 2016