



Cherokee Regional Park Play Area Improvements

December 15, 2016

Project Manager: Cheeneng Yang | Alice Messer
Contact: 651-266-6414 | 651-266-6412
Email: Cheeneng.Yang@ci.stpaul.mn.us | Alice.Messer@ci.stpaul.mn.us

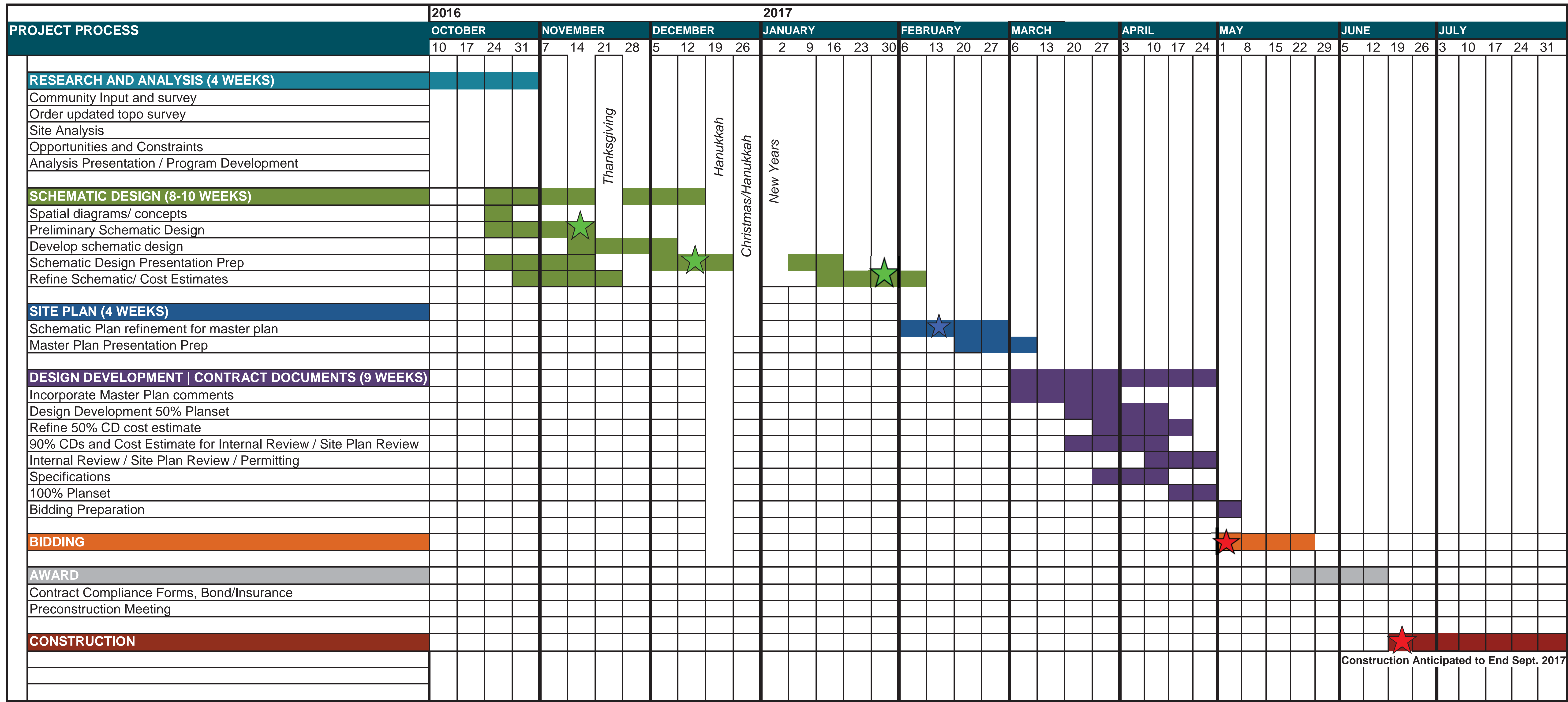


**Cherokee Regional Park Play Area Improvements
Community Meeting #2
Thursday, December 15, 2016
Agenda**

- | | |
|-------------------------------|--------------|
| 1. Introductions | (5 minutes) |
| 2. Recap Meeting #1 | (15 minutes) |
| 2. Refined Play Area Concepts | (40 minutes) |
| a) Concept A | |
| b) Concept B | |
| 3. Public Art | (15 minutes) |
| 4. Discussion/Questions | (40 minutes) |
| 5. Next Meeting | (5 minutes) |

Project Scope:

The City of Saint Paul Department of Parks and Recreation has secured \$342,000 from the Legacy Grant for play area improvements at Cherokee Regional Park. The project scope is to renovate the existing play equipment replacing it with new play equipment.



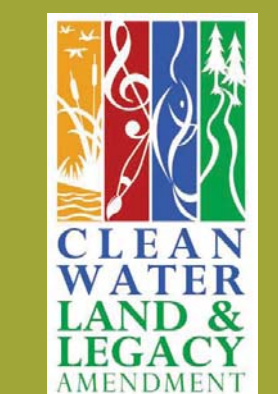
- ★ Design Advisory Meetings
- ★ Community Open House
- ★ Important milestones

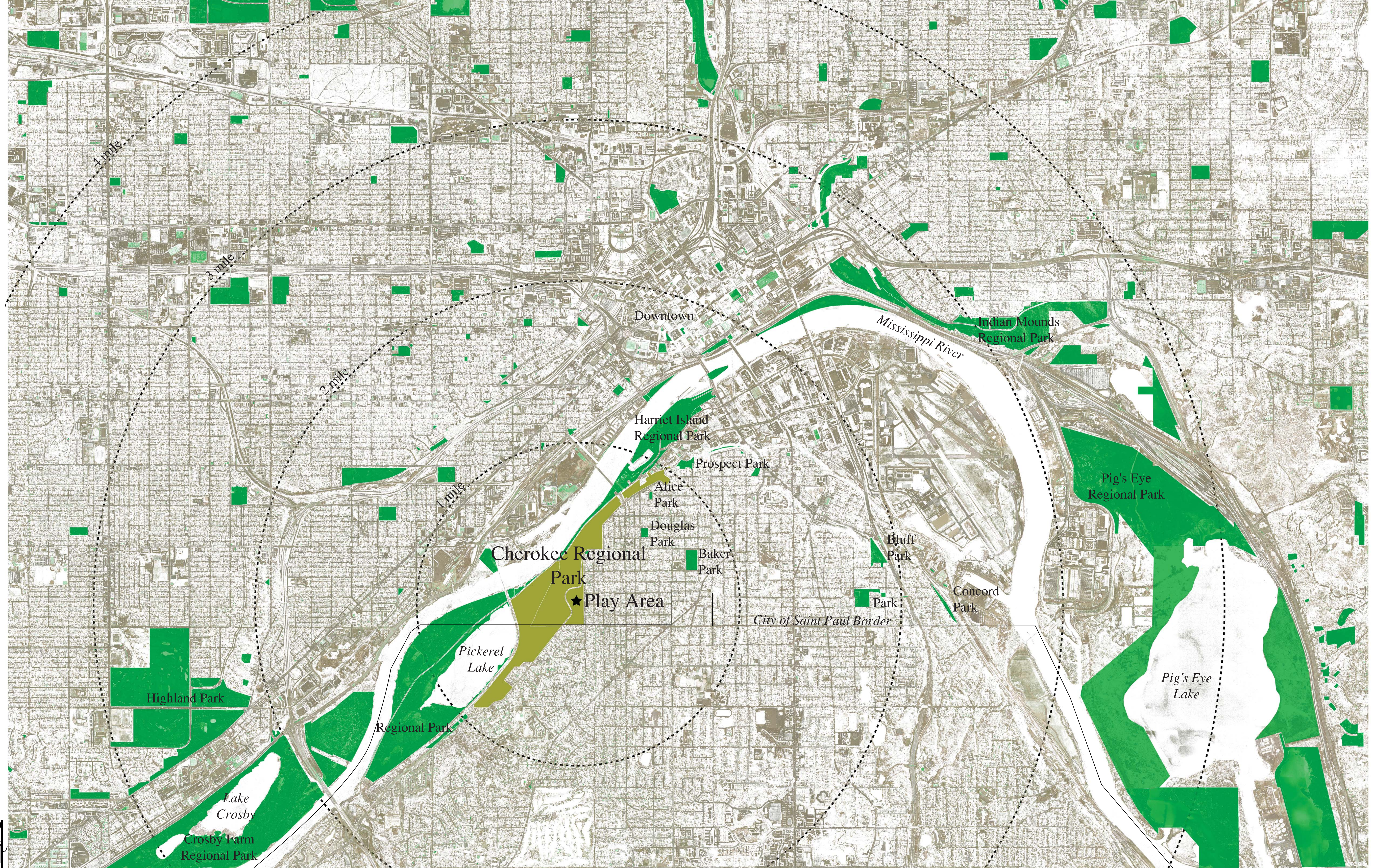
Cherokee Regional Park Play Area Improvements

-Project Scope & Schedule-

December 15, 2016

Project Manager: Cheeneng Yang | Alice Messer
 Contact: 651-266-6414 | 651-266-6412
 Email: Cheeneng.Yang@ci.stpaul.mn.us | Alice.Messer@ci.stpaul.mn.us





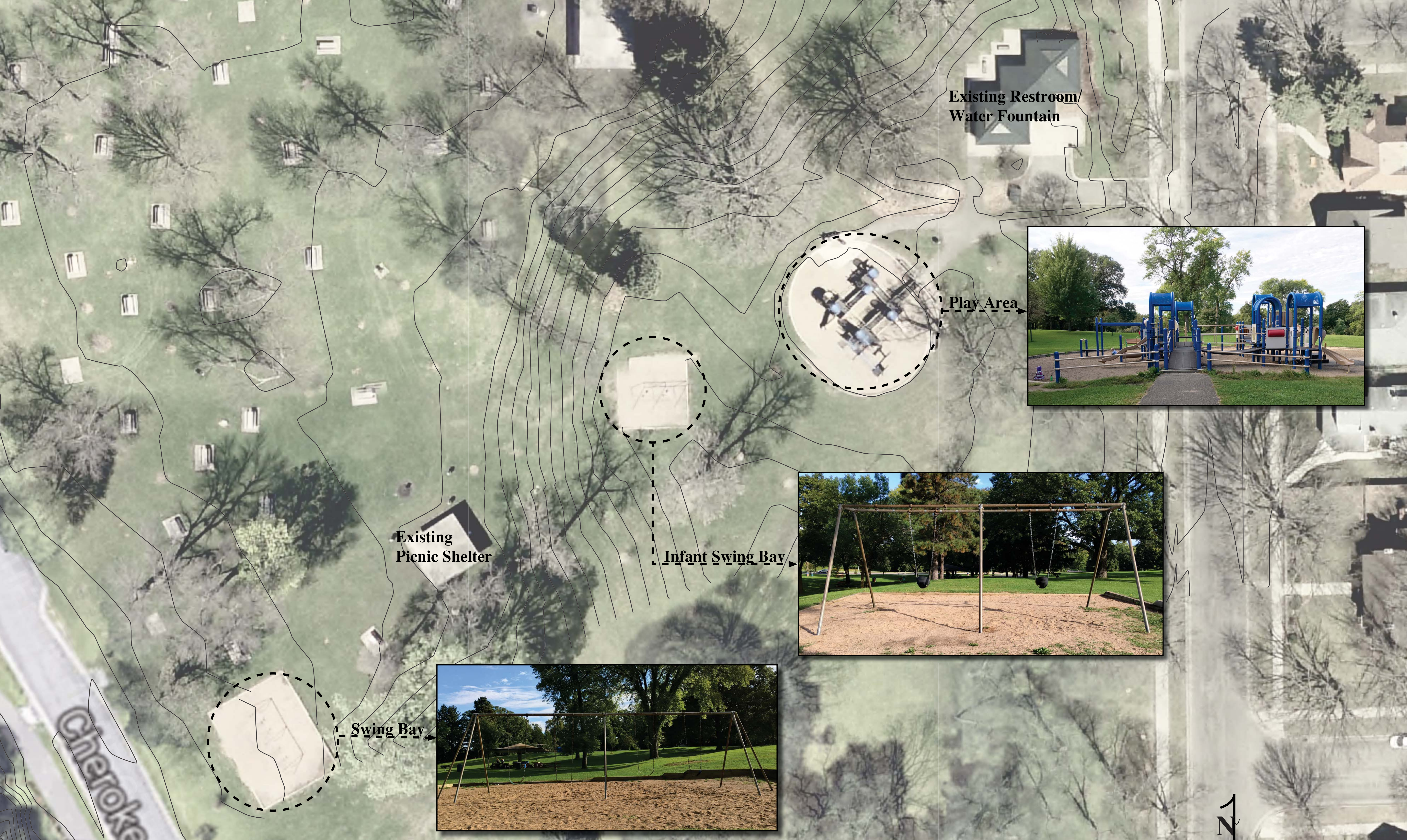
Cherokee Regional Park Play Area Improvements

-Site Context-

December 15, 2016

Project Manager: Cheeneng Yang | Alice Messer
 Contact: 651-266-6414 | 651-266-6412
 Email: Cheeneng.Yang@ci.stpaul.mn.us | Alice.Messer@ci.stpaul.mn.us





Existing Restroom/
Water Fountain

Play Area

Existing
Picnic Shelter

Infant Swing Bay

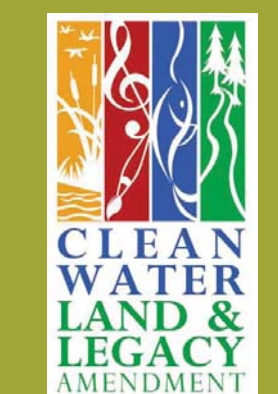
Swing Bay

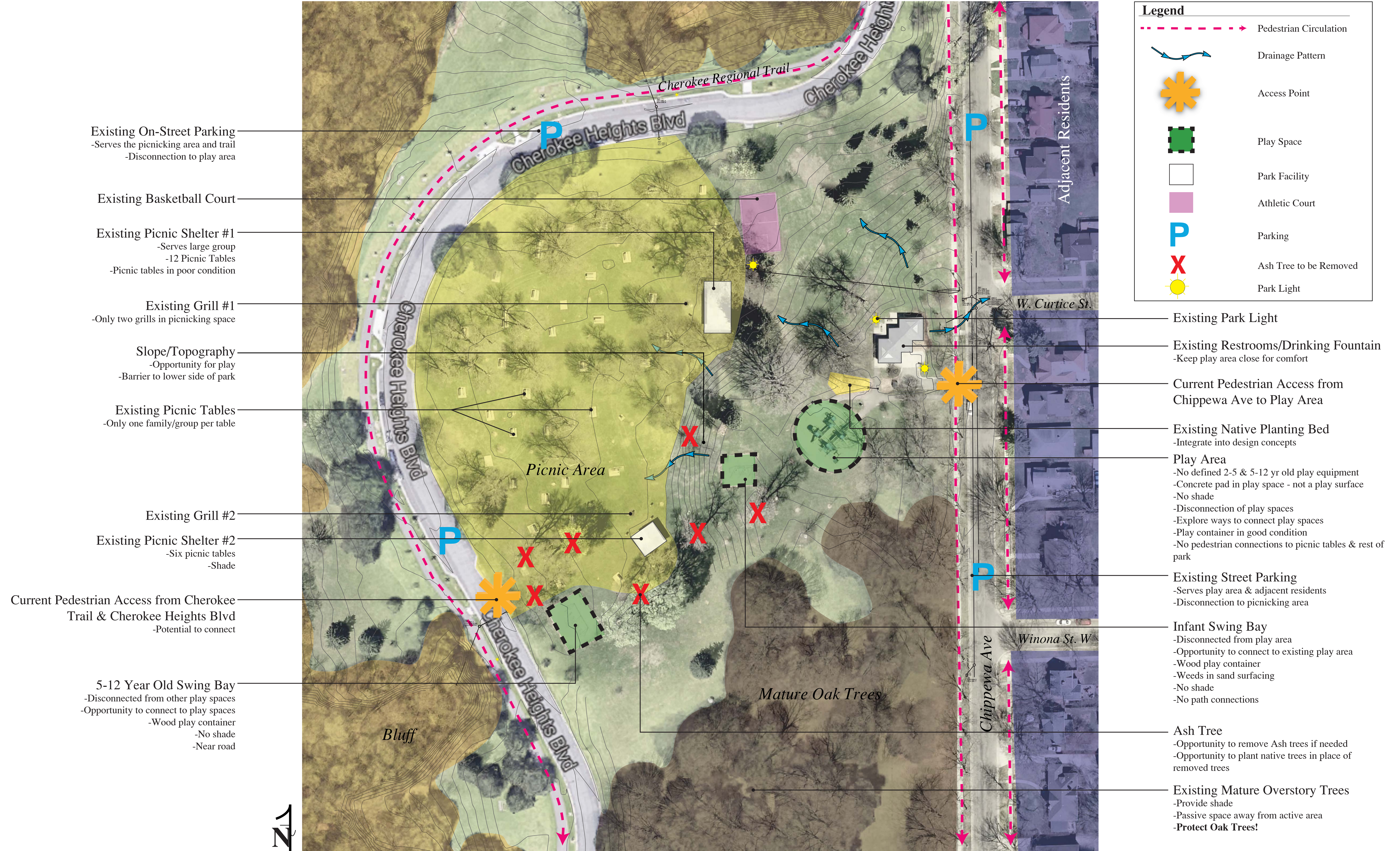
Cherokee Regional Park Play Area Improvements

December 15, 2016

-Existing Conditions-

Project Manager: Cheeneng Yang | Alice Messer
Contact: 651-266-6414 | 651-266-6412
Email: Cheeneng.Yang@ci.stpaul.mn.us | Alice.Messer@ci.stpaul.mn.us





Existing On-Street Parking
 -Serves the picnicking area and trail
 -Disconnection to play area

Existing Basketball Court

Existing Picnic Shelter #1
 -Serves large group
 -12 Picnic Tables
 -Picnic tables in poor condition

Existing Grill #1
 -Only two grills in picnicking space

Slope/Topography
 -Opportunity for play
 -Barrier to lower side of park

Existing Picnic Tables
 -Only one family/group per table

Existing Grill #2

Existing Picnic Shelter #2
 -Six picnic tables
 -Shade

Current Pedestrian Access from Cherokee Trail & Cherokee Heights Blvd
 -Potential to connect

5-12 Year Old Swing Bay
 -Disconnected from other play spaces
 -Opportunity to connect to play spaces
 -Wood play container
 -No shade
 -Near road

Legend	
	Pedestrian Circulation
	Drainage Pattern
	Access Point
	Play Space
	Park Facility
	Athletic Court
	Parking
	Ash Tree to be Removed
	Park Light

Existing Park Light

Existing Restrooms/Drinking Fountain
 -Keep play area close for comfort

Current Pedestrian Access from Chippewa Ave to Play Area

Existing Native Planting Bed
 -Integrate into design concepts

Play Area
 -No defined 2-5 & 5-12 yr old play equipment
 -Concrete pad in play space - not a play surface
 -No shade
 -Disconnection of play spaces
 -Explore ways to connect play spaces
 -Play container in good condition
 -No pedestrian connections to picnic tables & rest of park

Existing Street Parking
 -Serves play area & adjacent residents
 -Disconnection to picnicking area

Infant Swing Bay
 -Disconnected from play area
 -Opportunity to connect to existing play area
 -Wood play container
 -Weeds in sand surfacing
 -No shade
 -No path connections

Ash Tree
 -Opportunity to remove Ash trees if needed
 -Opportunity to plant native trees in place of removed trees

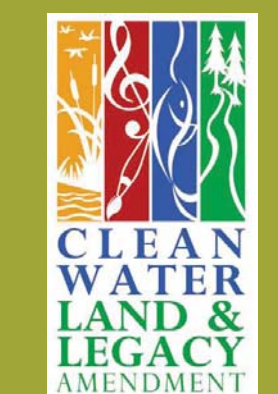
Existing Mature Overstory Trees
 -Provide shade
 -Passive space away from active area
 -Protect Oak Trees!

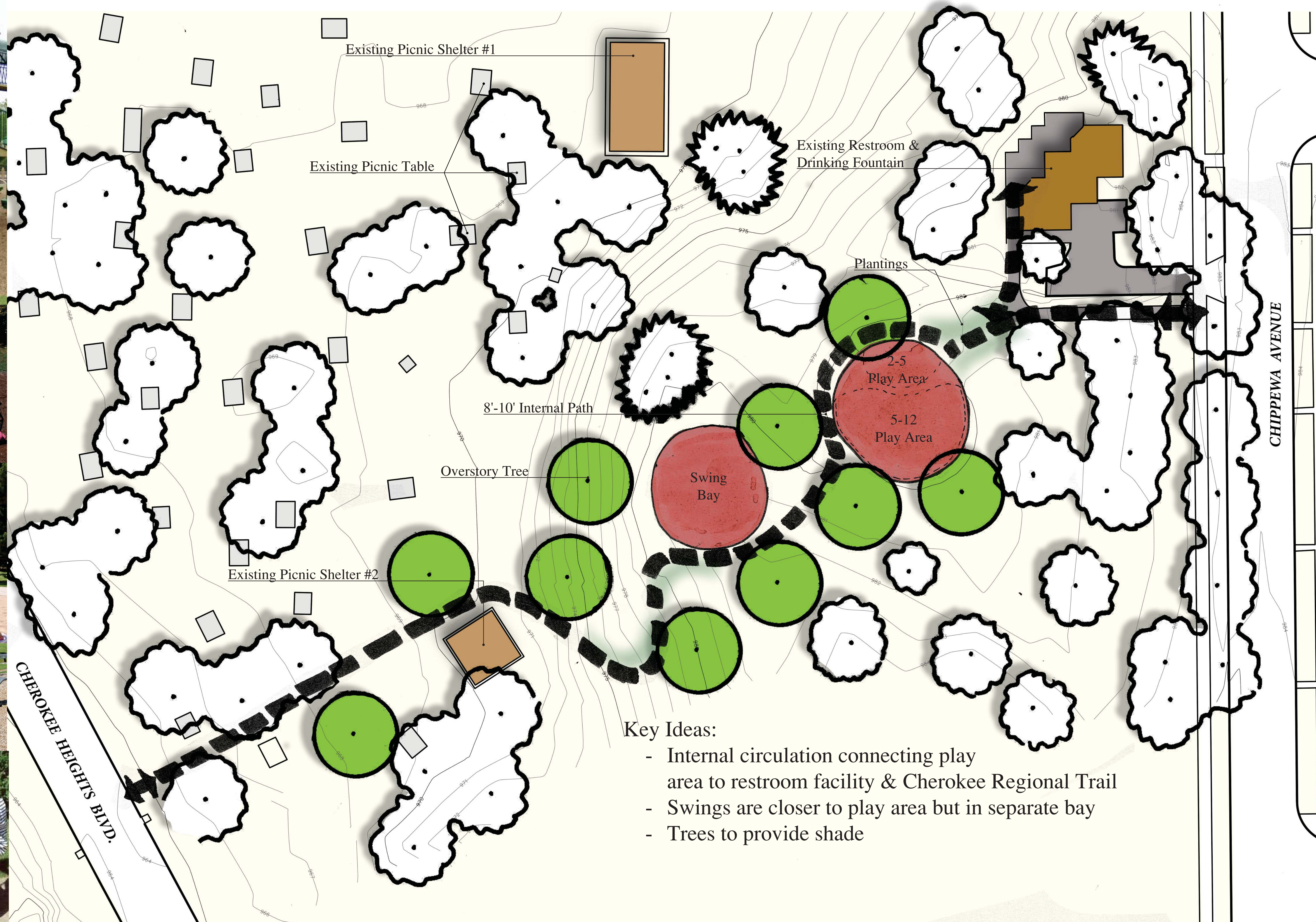
Cherokee Regional Park Play Area Improvements

December 15, 2016

-Opportunities & Constraints-

Project Manager: Cheeneng Yang | Alice Messer
 Contact: 651-266-6414 | 651-266-6412
 Email: Cheeneng.Yang@ci.stpaul.mn.us | Alice.Messer@ci.stpaul.mn.us





Key Ideas:

- Internal circulation connecting play area to restroom facility & Cherokee Regional Trail
- Swings are closer to play area but in separate bay
- Trees to provide shade

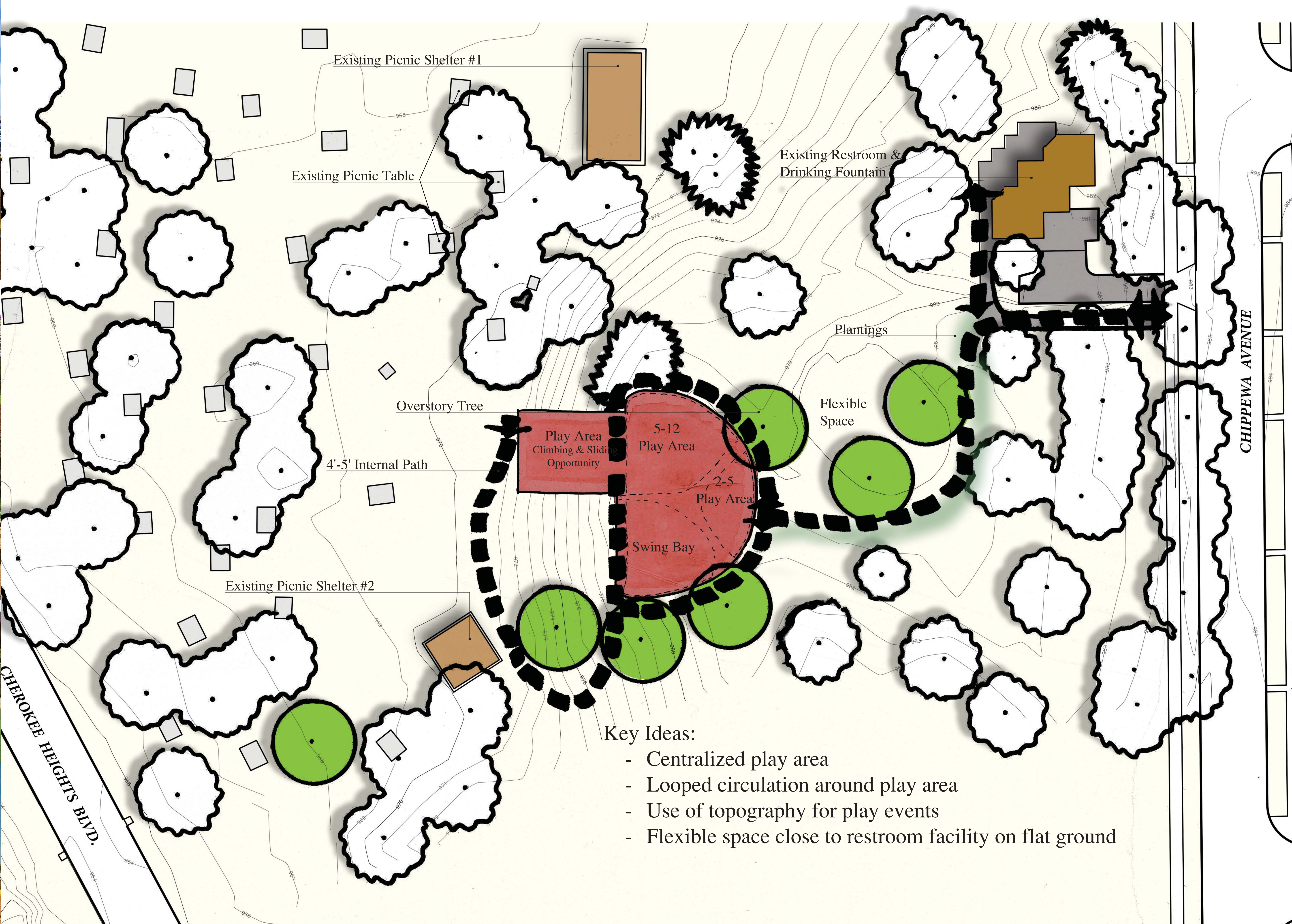
Cherokee Regional Park Play Area Improvements

December 15, 2016

-Meeting 1 | Concept A-

Project Manager: Cheeneng Yang | Alice Messer
 Contact: 651-266-6414 | 651-266-6412
 Email: Cheeneng.Yang@ci.stpaul.mn.us | Alice.Messer@ci.stpaul.mn.us





Key Ideas:

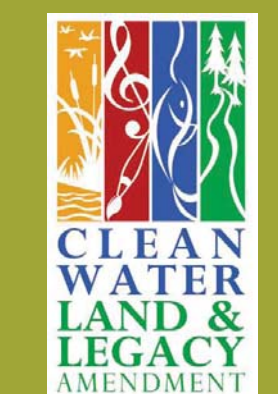
- Centralized play area
- Looped circulation around play area
- Use of topography for play events
- Flexible space close to restroom facility on flat ground

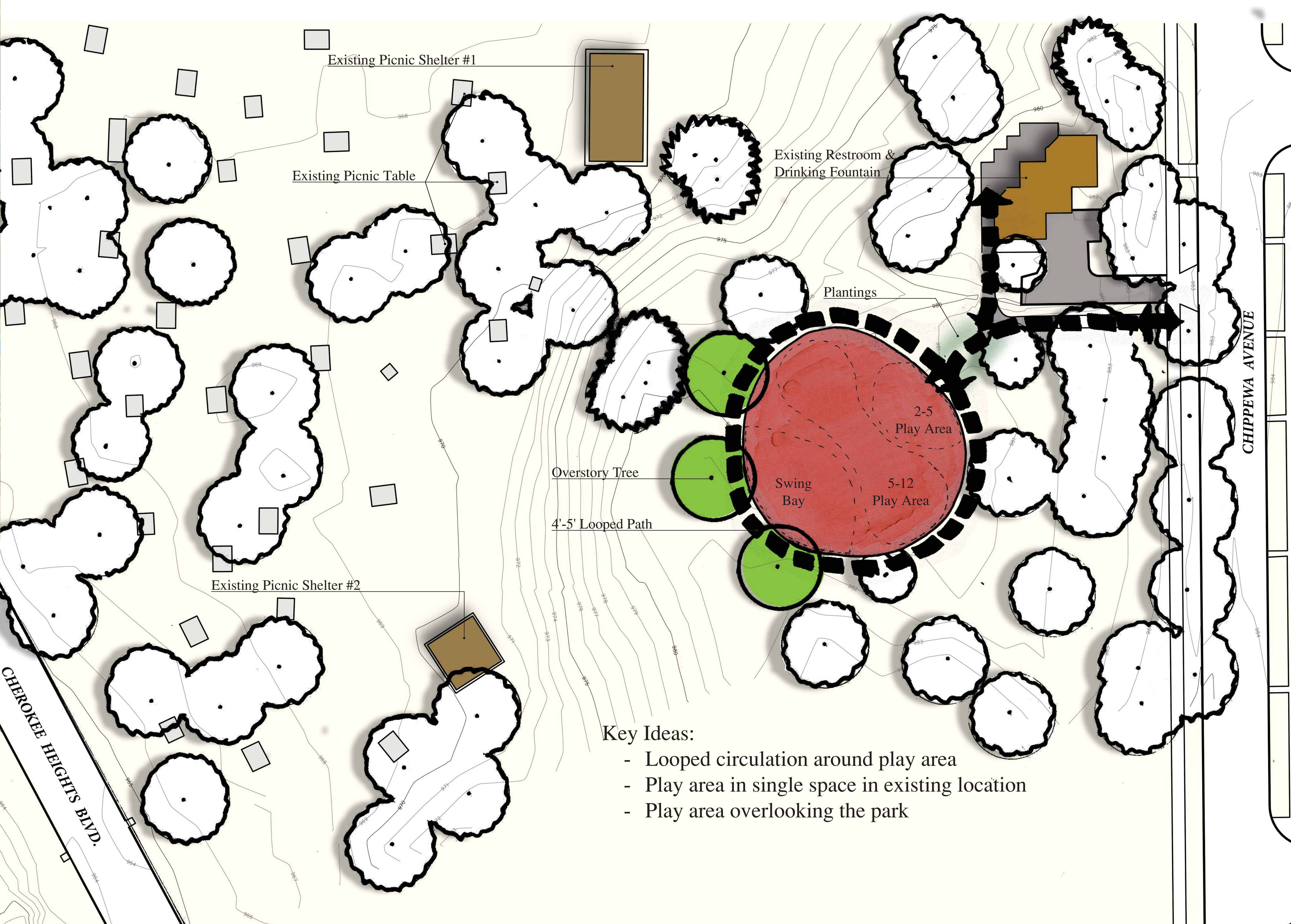
Cherokee Regional Park Play Area Improvements

December 15, 2016

-Meeting 1 | Concept B-

Project Manager: Cheeneng Yang | Alice Messer
 Contact: 651-266-6414 | 651-266-6412
 Email: Cheeneng.Yang@ci.stpaul.mn.us | Alice.Messer@ci.stpaul.mn.us





Key Ideas:

- Looped circulation around play area
- Play area in single space in existing location
- Play area overlooking the park

Cherokee Regional Park Play Area Improvements

December 15, 2016

-Meeting 1 | Concept C-

Project Manager: Cheeneng Yang | Alice Messer
 Contact: 651-266-6414 | 651-266-6412
 Email: Cheeneng.Yang@ci.stpaul.mn.us | Alice.Messer@ci.stpaul.mn.us

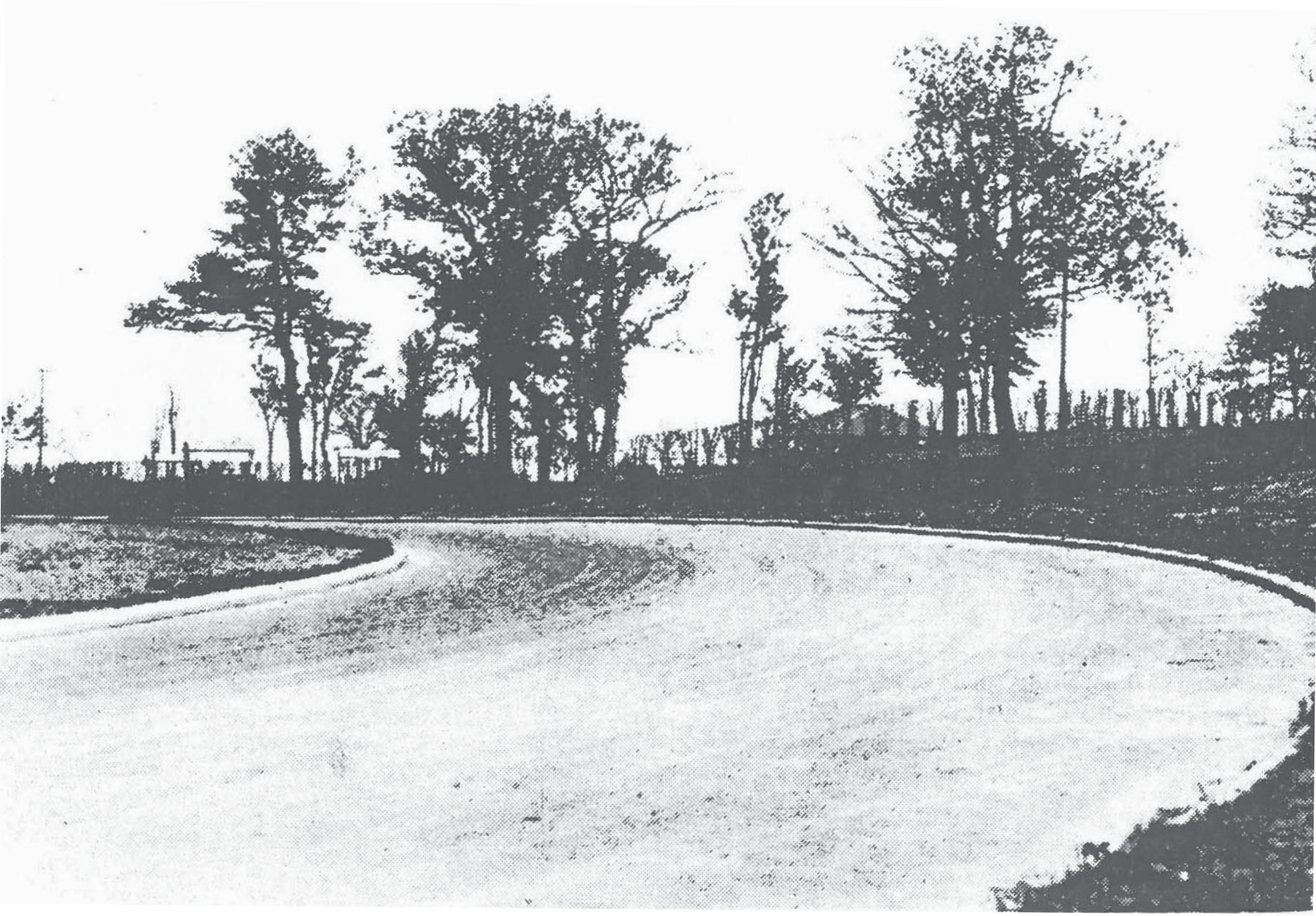


Cherokee Park Tourist Camp

1903-1911 Parkland acquired



1920 Tourist Camp Opened



1923 Parkway Established



1930 Tourist Camp Ended



Cherokee Regional Park Play Area Improvements

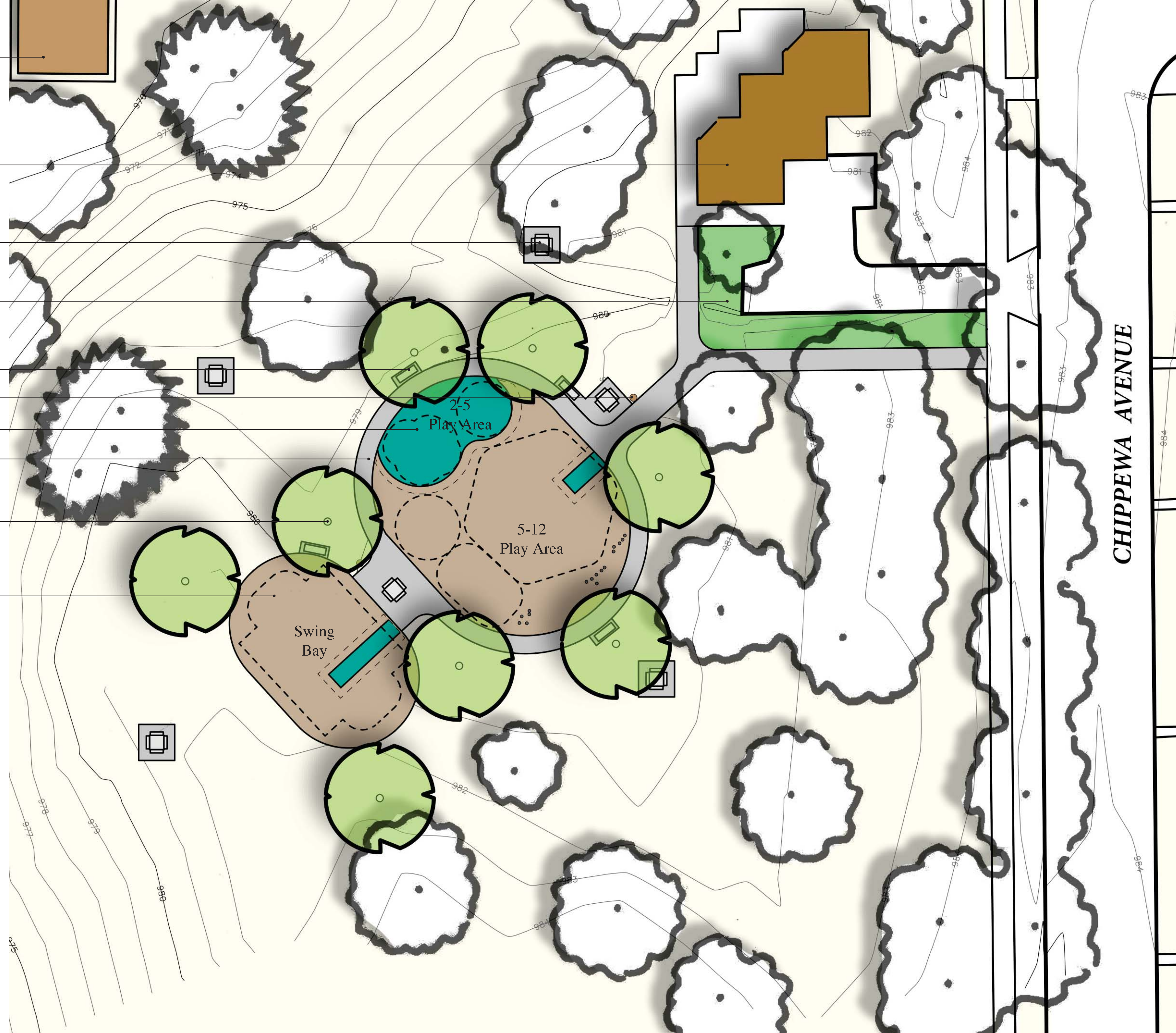
-Historical Images-

December 15, 2016

Project Manager: Cheeneng Yang | Alice Messer
Contact: 651-266-6414 | 651-266-6412
Email: Cheeneng.Yang@ci.stpaul.mn.us | Alice.Messer@ci.stpaul.mn.us



- Existing Picnic Shelter #1
- Existing Restroom & Drinking Fountain
- Picnic Table
- Plantings
- Bench
- Trash Receptacle
- Rubber Surfacing
- 4'-5' Path
- Overstory Tree
- Sand



Key Ideas:

- Looped path around play area connecting to swing bay
- Swings are near play area but in separate bay
- Picnic and seating around play space
- Trees to provide shade

Cherokee Regional Park Play Area Improvements

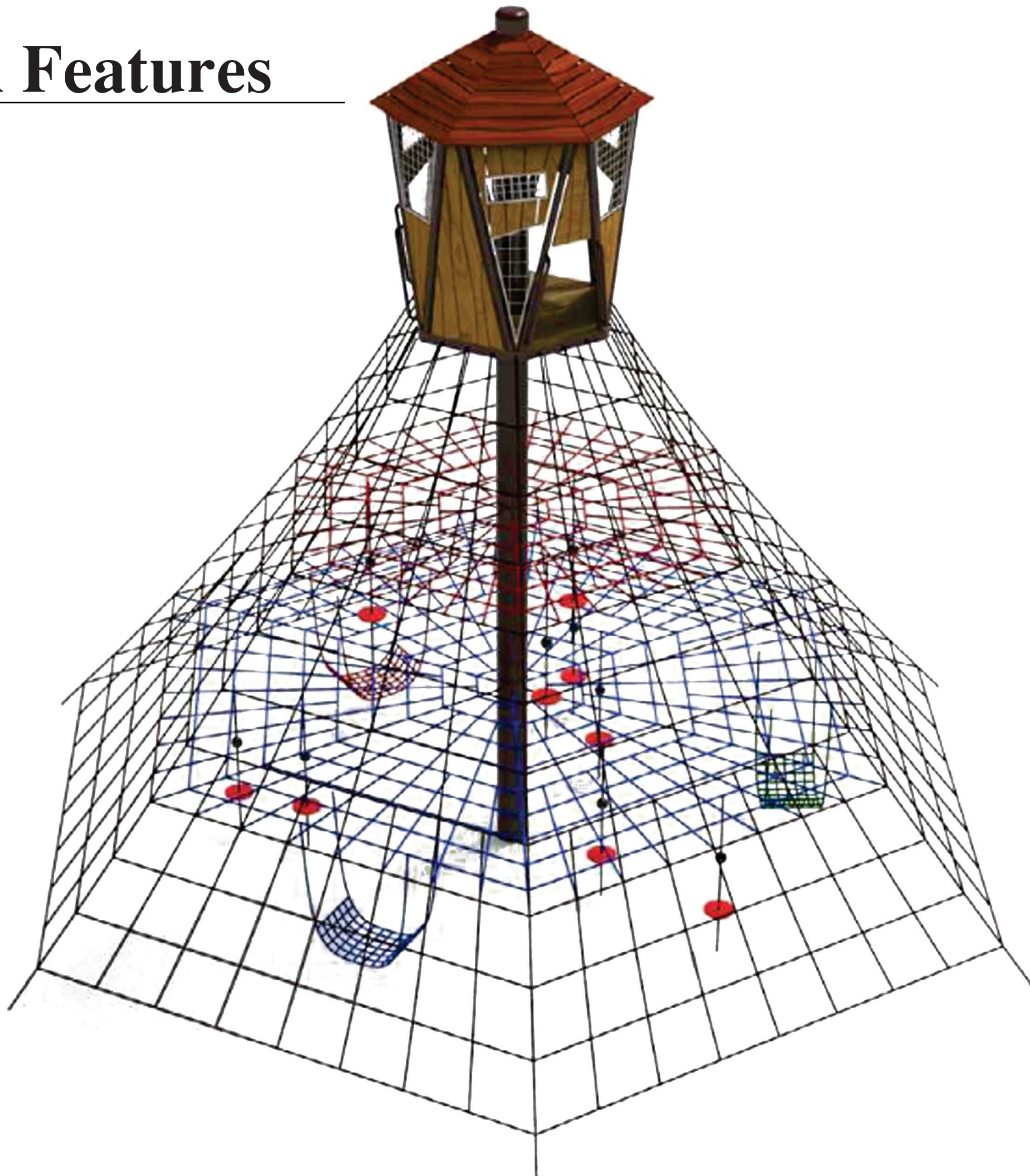
December 15, 2016

-Concept A-

Project Manager: Cheeneng Yang | Alice Messer
 Contact: 651-266-6414 | 651-266-6412
 Email: Cheeneng.Yang@ci.stpaul.mn.us | Alice.Messer@ci.stpaul.mn.us



Main Features



Spinning



Swinging



2-5 Play Elements



Cherokee Regional Park Play Area Improvements

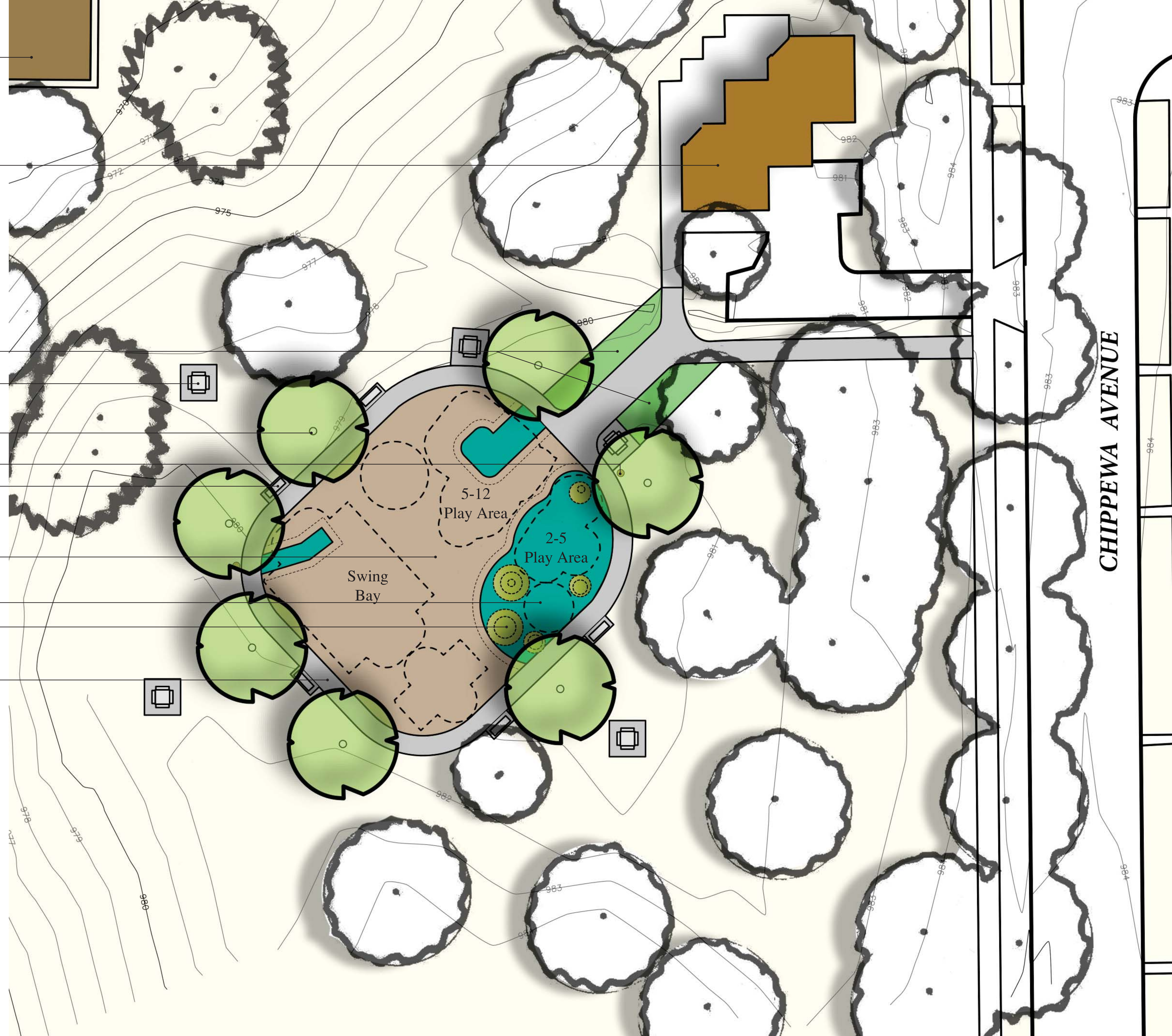
December 15, 2016

-Concept A | Play Elements-

Project Manager: Cheeneng Yang | Alice Messer
Contact: 651-266-6414 | 651-266-6412
Email: Cheeneng.Yang@ci.stpaul.mn.us | Alice.Messer@ci.stpaul.mn.us



- Existing Picnic Shelter #1
- Existing Restroom & Drinking Fountain
- Plantings
- Picnic Table
- Overstory Tree
- Trash Receptacle
- Bench
- Sand
- Rubber Surfacing
- Playmounds
- 4'-5' Looped Path



Key Ideas:

- Looped path around play area
- Reconfiguration of play area
- Play spaces defined by material
- Play area remains at top of plateau

Cherokee Regional Park Play Area Improvements

December 15, 2016

-Concept B-

Project Manager: Cheeneng Yang | Alice Messer
 Contact: 651-266-6414 | 651-266-6412
 Email: Cheeneng.Yang@ci.stpaul.mn.us | Alice.Messer@ci.stpaul.mn.us



Main Features



Spinning



Swinging



Climbing



2-5 Play Elements



Cherokee Regional Park Play Area Improvements

December 15, 2016

-Concept B | Play Elements-

Project Manager: Cheeneng Yang | Alice Messer
Contact: 651-266-6414 | 651-266-6412
Email: Cheeneng.Yang@ci.stpaul.mn.us | Alice.Messer@ci.stpaul.mn.us



Harnessing Light



Re-Telling History



Celebrating Diversity



Mural by: Lori Greene



Cherokee Regional Park Play Area Improvements

-Public Art-

December 15, 2016

Project Manager: Cheeneng Yang | Alice Messer
Contact: 651-266-6414 | 651-266-6412
Email: Cheeneng.Yang@ci.stpaul.mn.us | Alice.Messer@ci.stpaul.mn.us



Saint Paul Parks and Recreation

NEXT MEETING:

**Baker Park Recreation Center
6:00-8:00 PM**

Thursday, January 26, 2017