

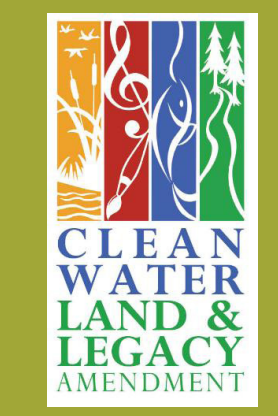


Cherokee Regional Park Play Area Improvements

January 26, 2017

-Community Meeting #3-

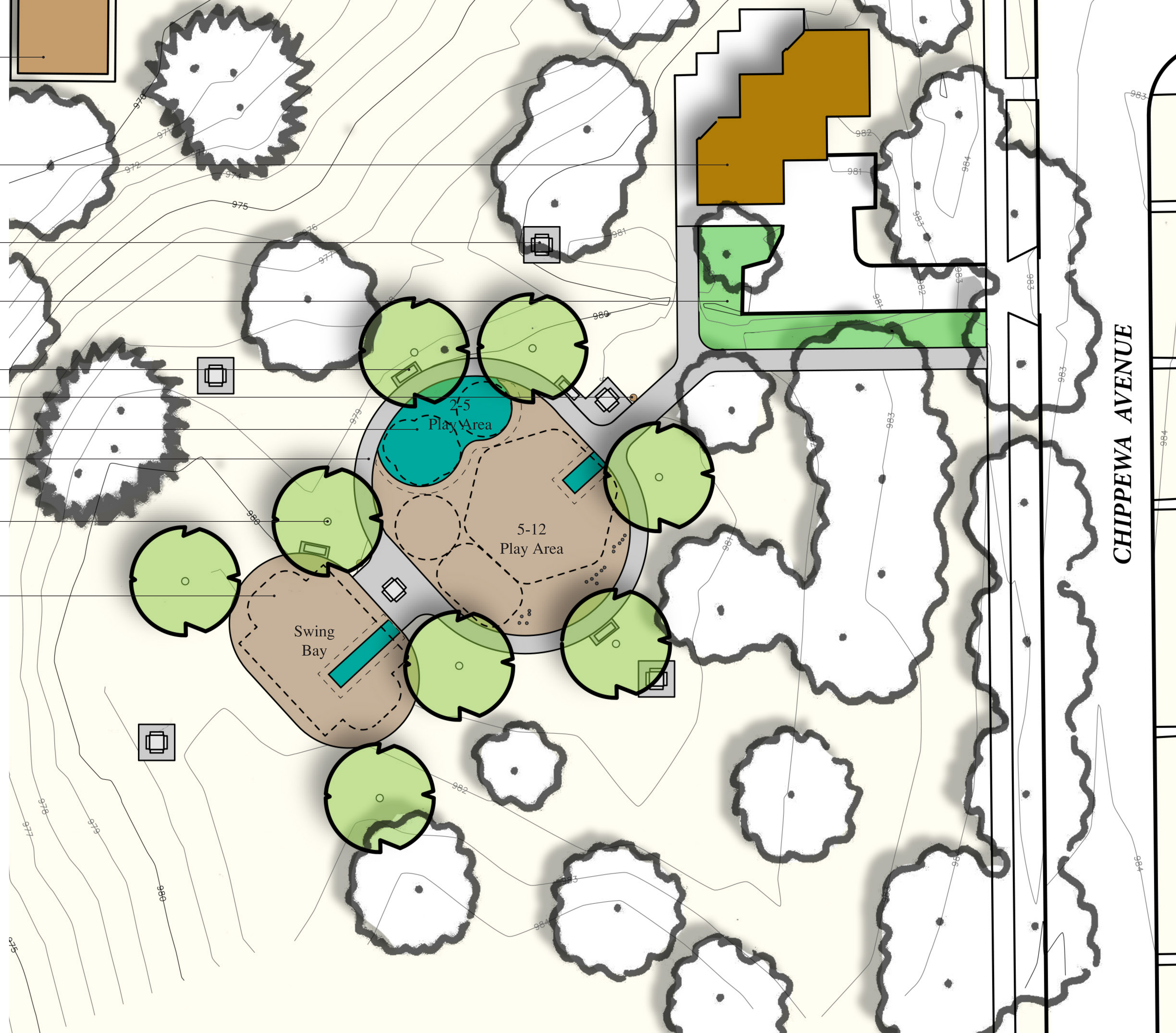
Project Manager: Cheeneng Yang | Alice Messer
Contact: 651-266-6414 | 651-266-6412
Email: Cheeneng.Yang@ci.stpaul.mn.us | Alice.Messer@ci.stpaul.mn.us



**Cherokee Regional Park Play Area Improvements
Community Meeting #3
Thursday, January 26, 2017
Agenda**

1. Introductions (10 minutes)
2. Recap Meeting #2 (25 minutes)
3. Present Final Concept (40 minutes)
 - a) Play Equipment
 - b) Sections
 - c) Site Furnishings
4. Discussion/Questions (40 minutes)
5. Next Meeting (5 minutes)

- Existing Picnic Shelter #1
- Existing Restroom & Drinking Fountain
- Picnic Table
- Plantings
- Bench
- Trash Receptacle
- Rubber Surfacing
- 4'-5' Path
- Proposed Tree
- Sand



Key Ideas:

- Looped path around play area connecting to swing bay
- Swings are near play area but in separate bay
- Picnic and seating around play space
- Trees to provide shade

Cherokee Regional Park Play Area Improvements

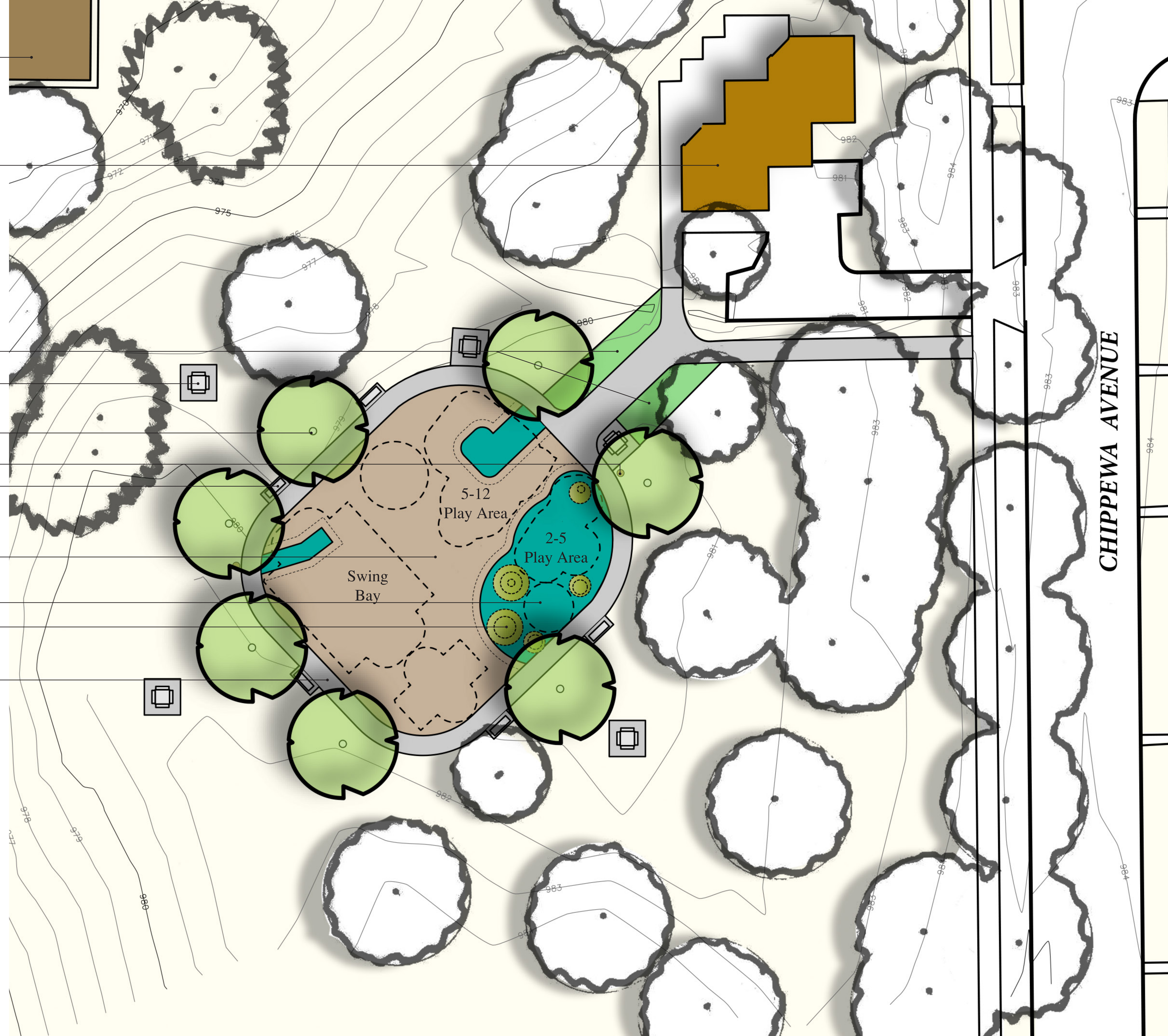
January 26, 2017

- Meeting 2 Concept A-

Project Manager: Cheeneng Yang | Alice Messer
 Contact: 651-266-6414 | 651-266-6412
 Email: Cheeneng.Yang@ci.stpaul.mn.us | Alice.Messer@ci.stpaul.mn.us



- Existing Picnic Shelter #1
- Existing Restroom & Drinking Fountain
- Plantings
- Picnic Table
- Proposed Tree
- Trash Receptacle
- Bench
- Sand
- Rubber Surfacing
- Play-mounds
- 4'-5' Looped Path



Key Ideas:

- Looped path around play area
- Reconfiguration of play area
- Play spaces defined by material
- Play area remains at top of plateau

Cherokee Regional Park Play Area Improvements

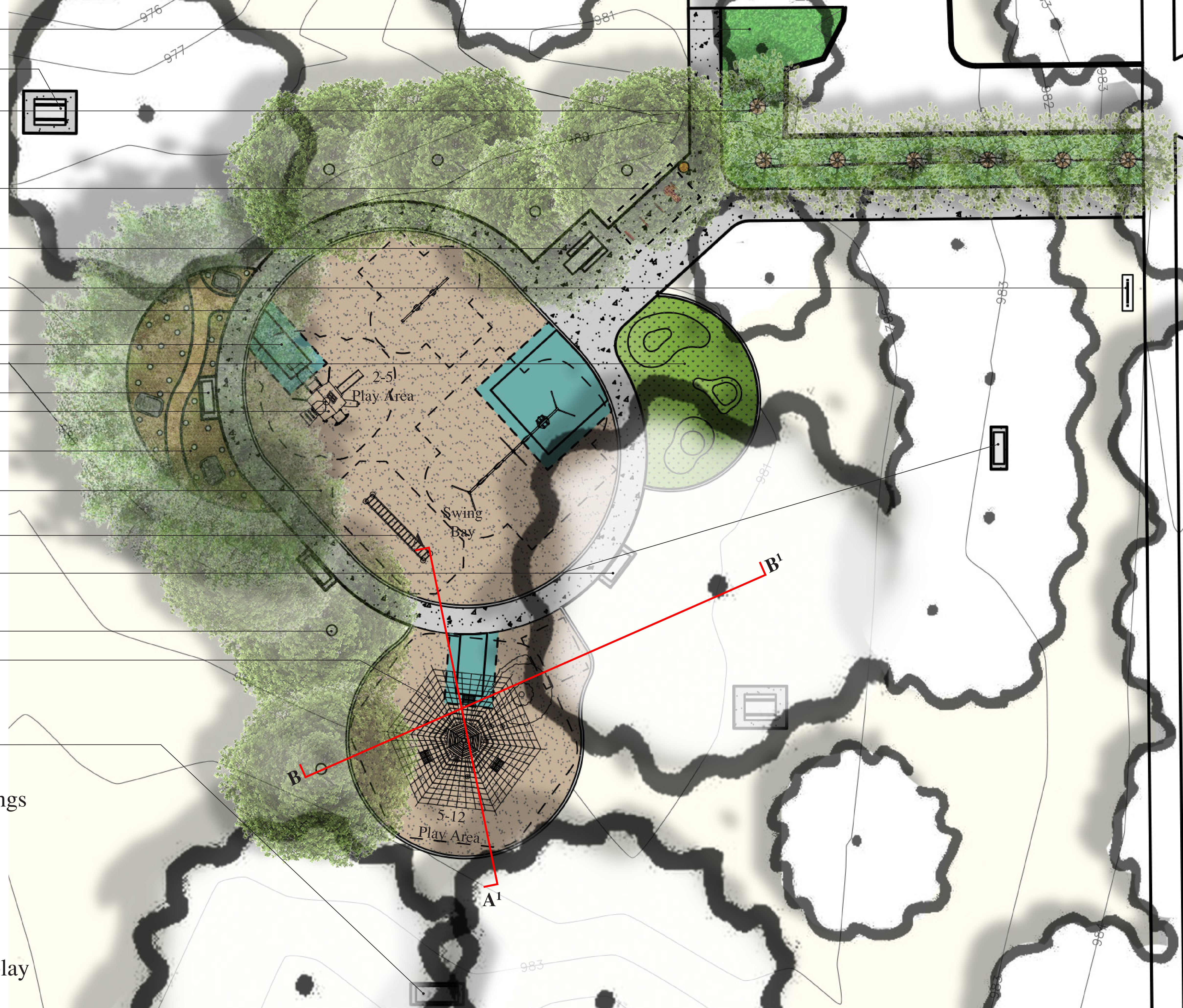
January 26, 2017

- Meeting 2 Concept B-

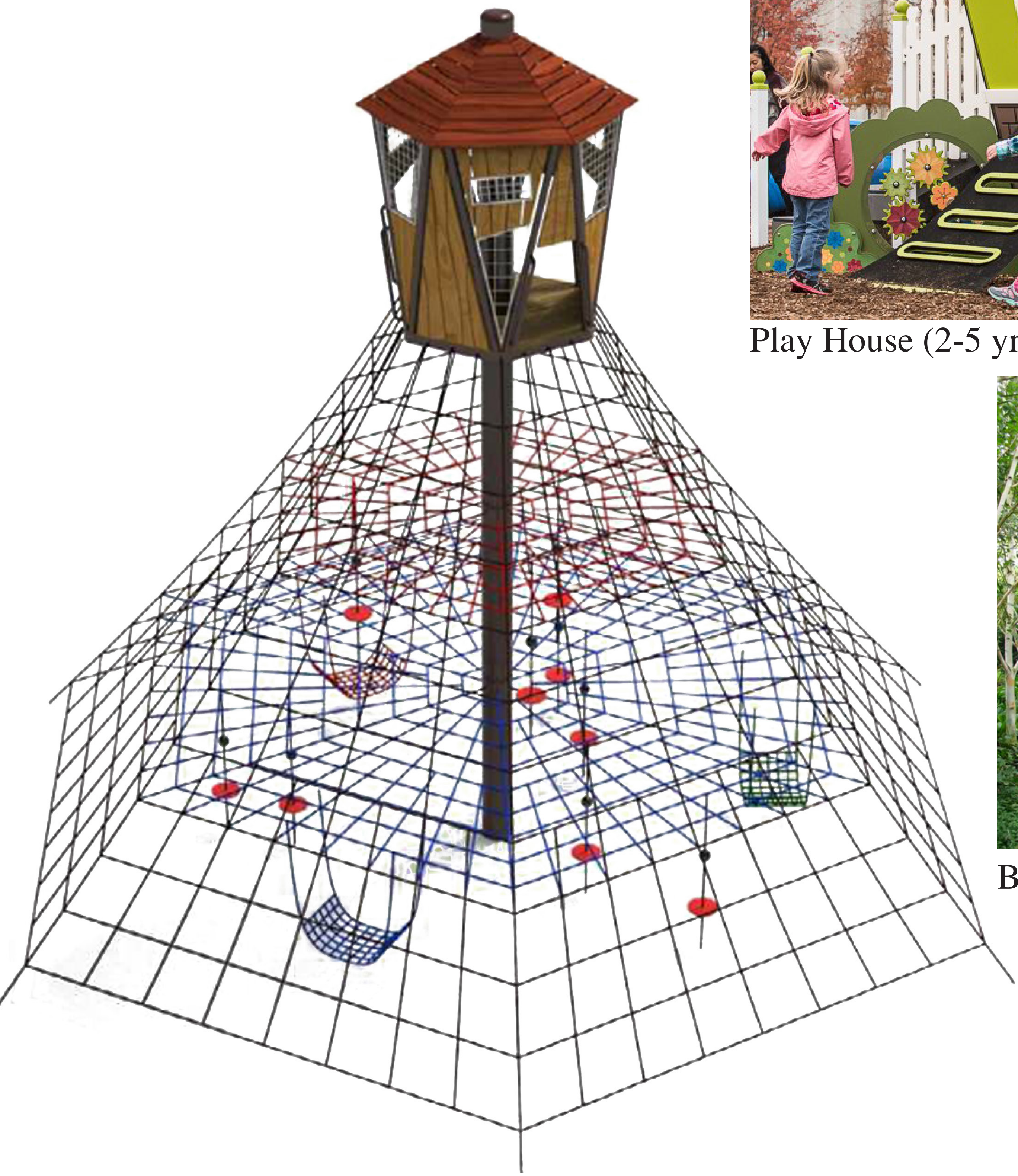
Project Manager: Cheeneng Yang | Alice Messer
 Contact: 651-266-6414 | 651-266-6412
 Email: Cheeneng.Yang@ci.stpaul.mn.us | Alice.Messer@ci.stpaul.mn.us



- Grass
- Picnic Table
- Proposed Trees
- Bike Racks & Fix-it Station
- ADA Picnic Table
- Park Sign
- 5' Concrete Path
- Rubber Surfacing
- Artificial Turf Play-mounds
- Bench
- 2-5 Play House
- Birch Grove
- Sand
- Monkey Bars
- Bench
- Proposed Overstory Trees
- 5-12 Play Element
- Swinging Bench



- Key Ideas:**
- Keep existing play container - utilize for swings & 2-5 play area
 - Looped path around play area connecting to other play spaces
 - Picnic and seating around play space
 - Use existing trees for shade
 - Birch grove for seating and informal nature play
 - Signature play element



Skytower (w/slide) (5-12 yr old)



Play House (2-5 yr old)



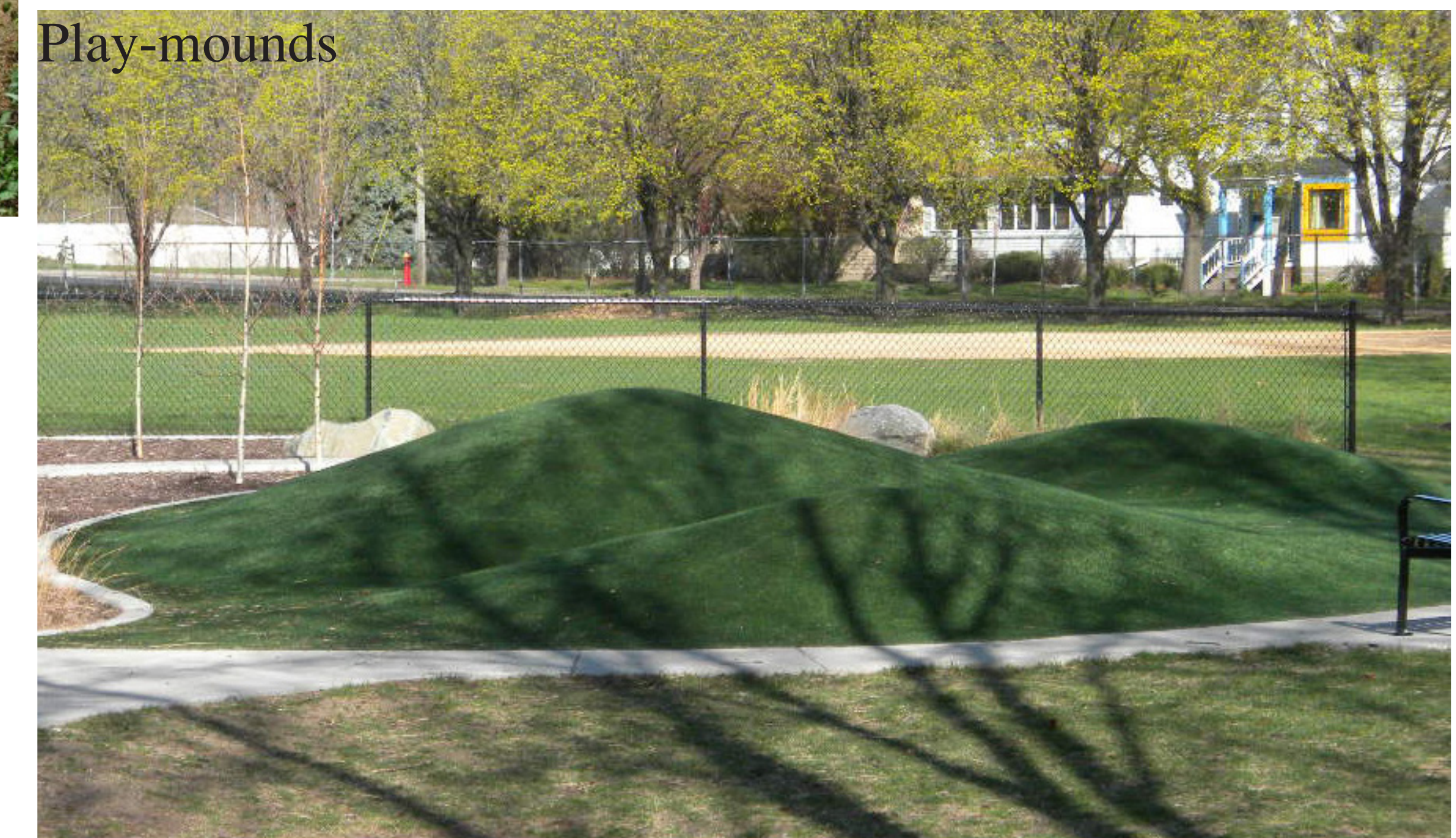
Birch Grove



Traditional Swings



Monkey Bars



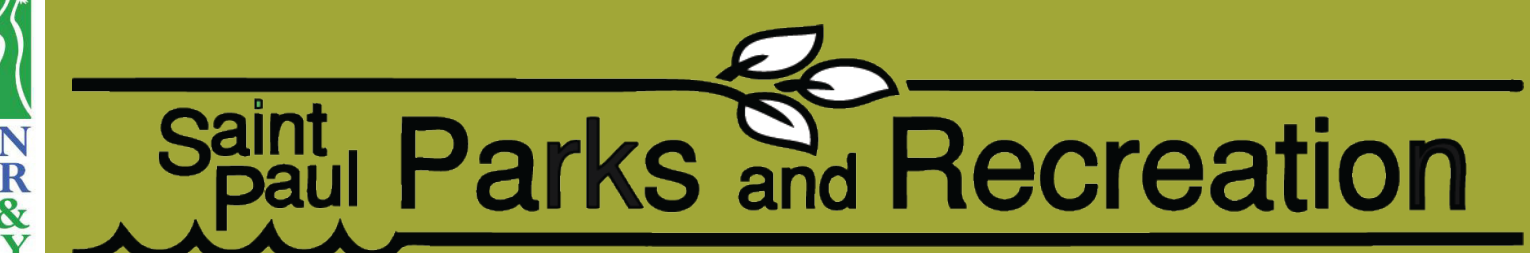
Play-mounds

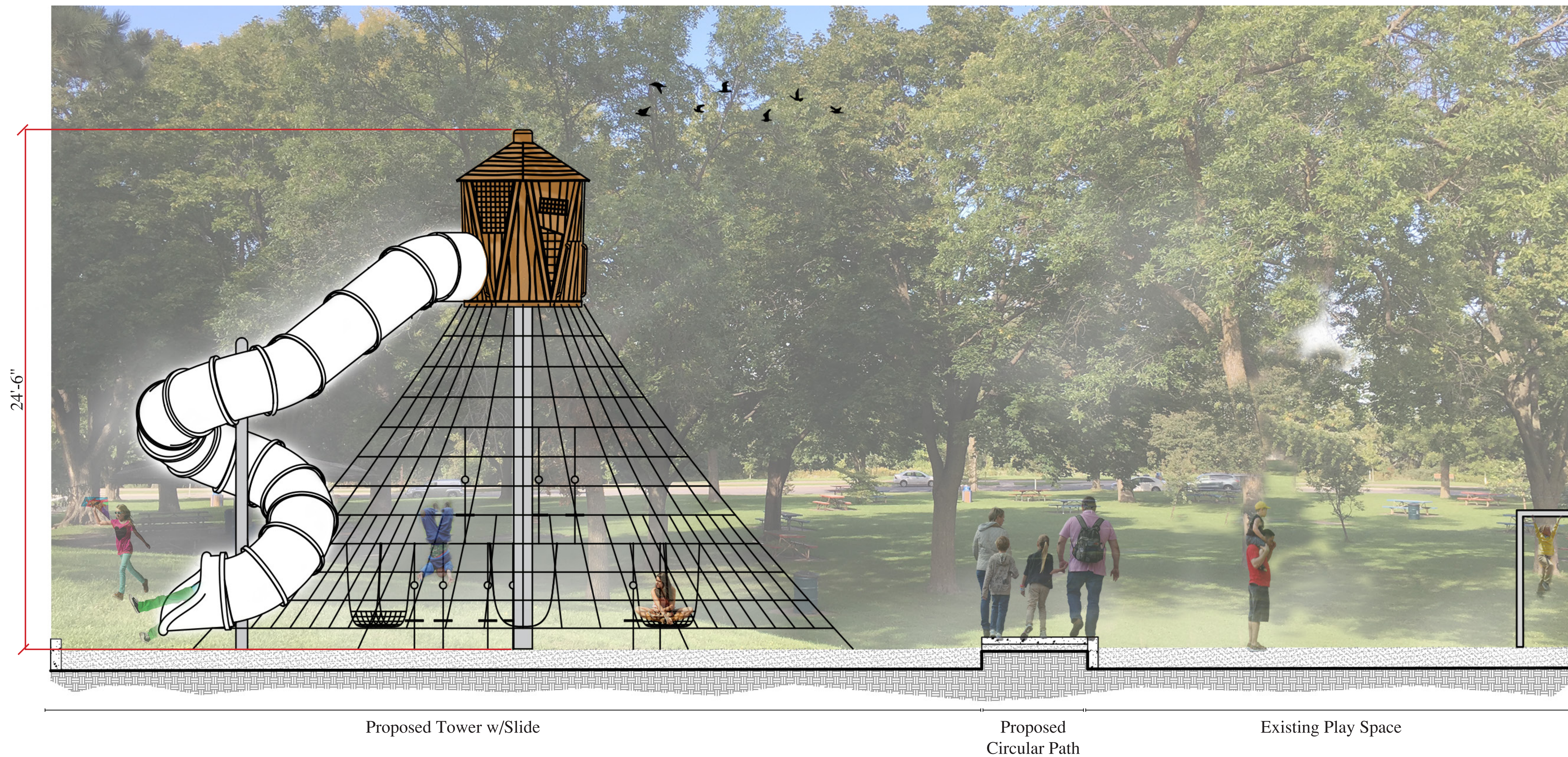
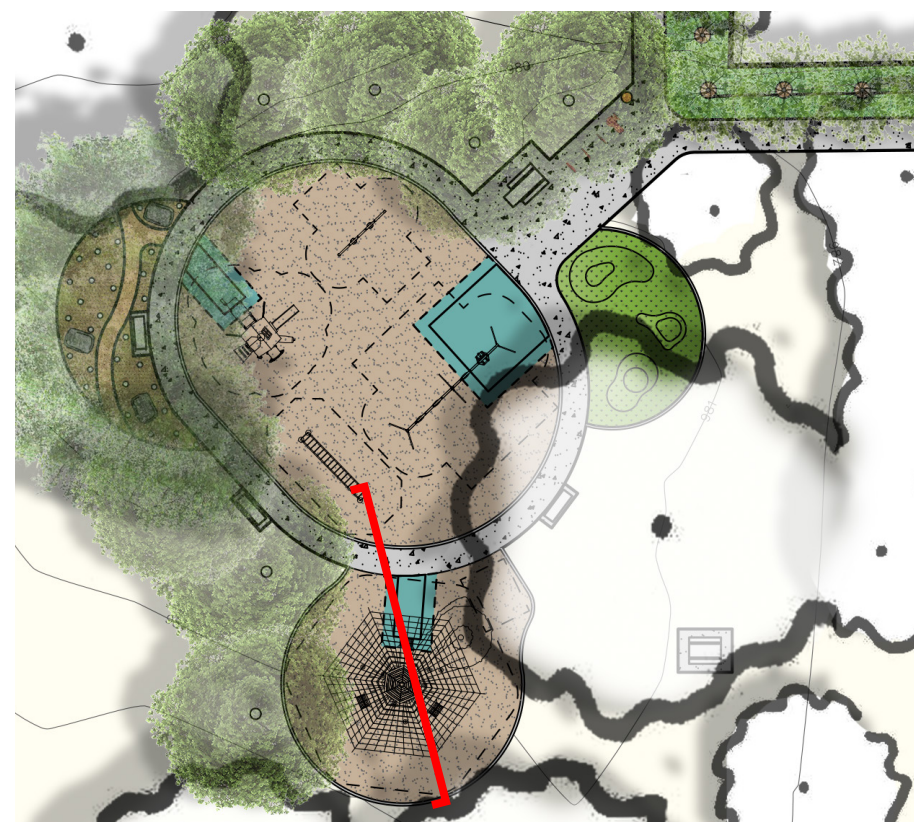
Cherokee Regional Park Play Area Improvements

January 26, 2017

-Final Concept Play Elements-

Project Manager: Cheeneng Yang | Alice Messer
Contact: 651-266-6414 | 651-266-6412
Email: Cheeneng.Yang@ci.stpaul.mn.us | Alice.Messer@ci.stpaul.mn.us





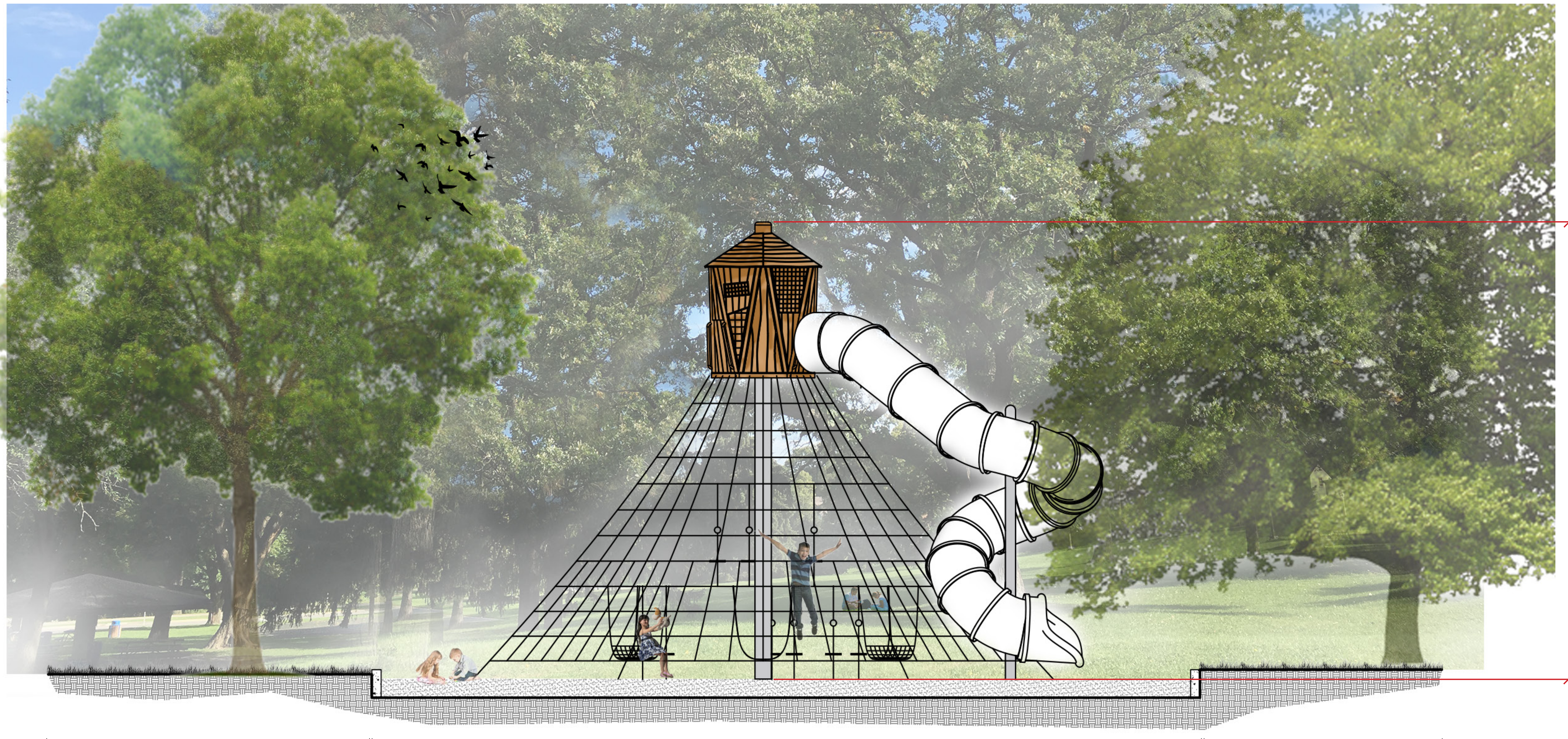
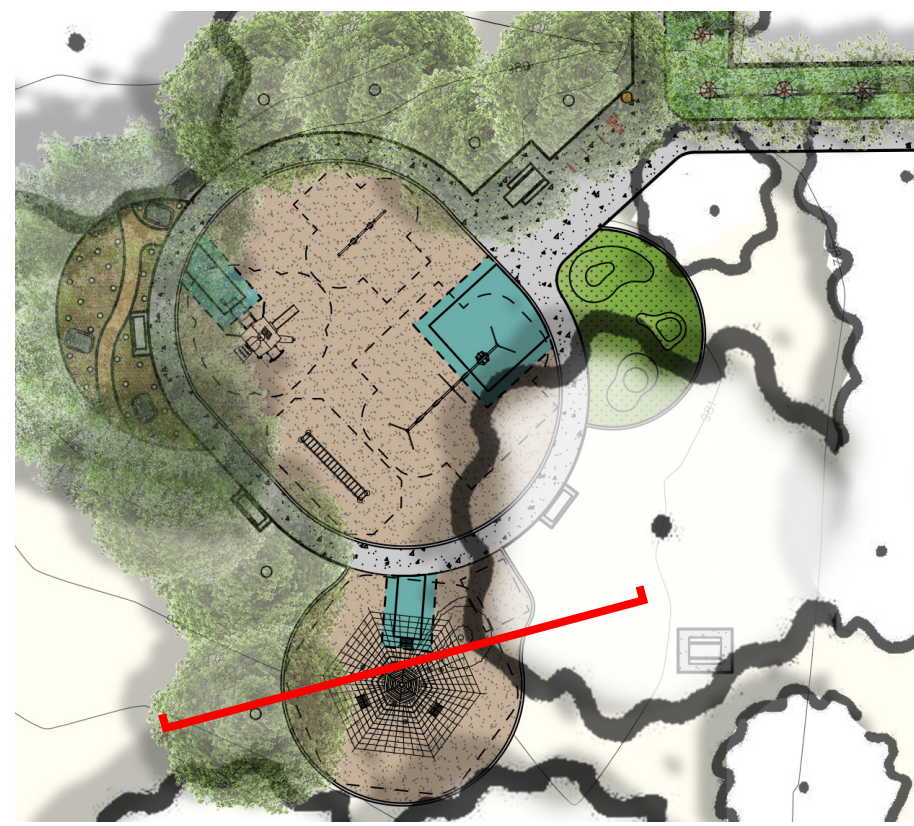
Cherokee Regional Park Play Area Improvements

-Section A-

January 26, 2017

Project Manager: Cheeneng Yang | Alice Messer
 Contact: 651-266-6414 | 651-266-6412
 Email: Cheeneng.Yang@ci.stpaul.mn.us | Alice.Messer@ci.stpaul.mn.us





Proposed Tree

Proposed Tower w/Slide

Existing Oak Tree

24'-6"

Cherokee Regional Park Play Area Improvements

-Section B-

January 26, 2017

Project Manager: Cheeneng Yang | Alice Messer
 Contact: 651-266-6414 | 651-266-6412
 Email: Cheeneng.Yang@ci.stpaul.mn.us | Alice.Messer@ci.stpaul.mn.us





Bench



Picnic Table



Swinging Bench



Bicycle Fix-It Station



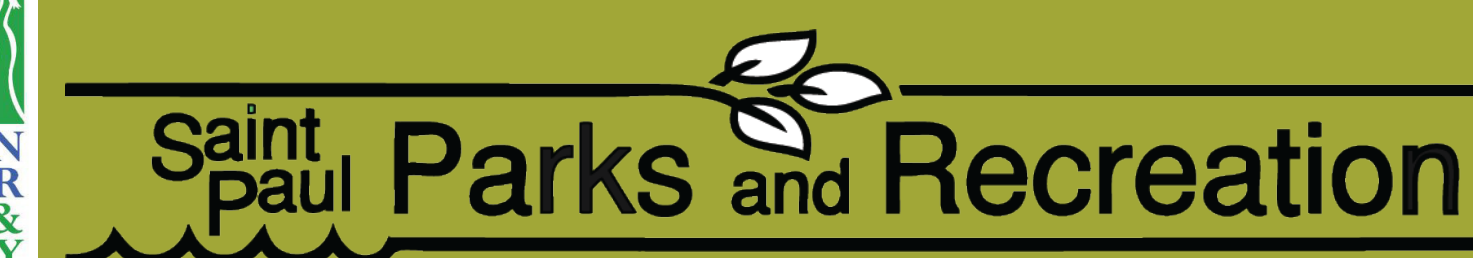
Bike Racks

Cherokee Regional Park Play Area Improvements

-Site Furnishings-

January 26, 2017

Project Manager: Cheeneng Yang | Alice Messer
Contact: 651-266-6414 | 651-266-6412
Email: Cheeneng.Yang@ci.stpaul.mn.us | Alice.Messer@ci.stpaul.mn.us



NEXT MEETING:

OPEN HOUSE
Baker Park Recreation Center
6:00-8:00 PM

Thursday, February 16, 2017