



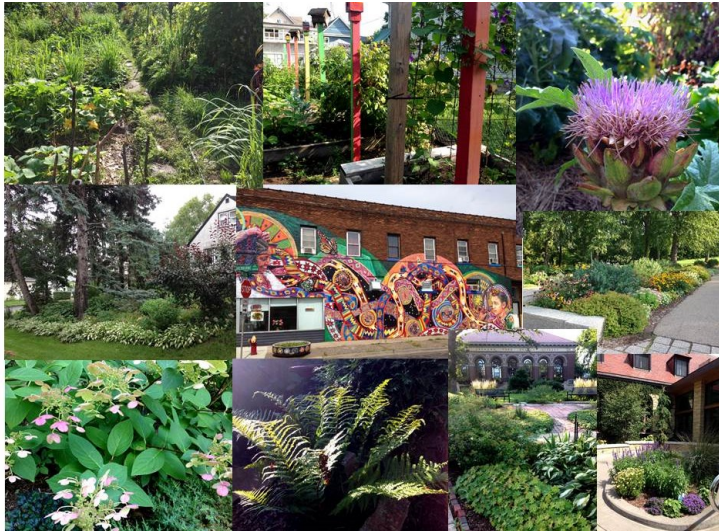
SAINT PAUL NATURAL RESOURCES

A Section of Saint Paul Parks and Recreation

Volume 3, Winter Issue

February 9, 2017

Blooming Saint Paul Awards



The Arts and Garden program celebrated our 12th annual Blooming Saint Paul Awards ceremony held on January 24, 2017 at the Como Dockside. This is an invitation-only

celebration that is sponsored by the Saint Paul Pioneer Press and Capitol Region Watershed District and is hosted by Saint Paul Parks and Recreation, the Saint Paul Garden Club, the

Ramsey County Master Gardener program.

Our other sponsors are: Egg|Plant, Kern Landscape Resources, Minnesota State Horticulture Society, and Public Art Saint Paul. The guest speaker at this years' ceremony was Tracy Sides of Urban Oasis, the winner of the St. Paul Foundation's million-dollar idea contest. Nominated gardens were judged this summer by more than thirty Ramsey County Master Gardeners. Award categories this year included: Residential, Business/Institutional, Garden Steward Award,

Inside this Issue

Restoring the Floodplain	2
Gravel: Elevated	3
River Leadership Flowing in New Direction	3
Phalen Freeze Fest	4
Blooming Saint Paul Winners	4

Garden Advocate Award, and a landscape that included at least 50% edible plants. Winners of the Blooming Saint Paul Awards are listed on page 4. Congratulations and thanks to all who help keep Saint Paul beautiful!

Volunteer to Help Nature

Do you love being outside? How about taking care of the environment? We would love for you to join the Natural Resources Team and volunteer to help take care of our parks, gardens, prairies and more. There are many ways that you can volunteer with the Natural Resources team. We are always looking for individuals and groups to restore our natural areas throughout the city's regional parks. With over 2,000 acres of natural areas in Saint Paul, our

Environmental Services staff simply cannot do it alone. Volunteers are an integral part of natural resource management in Saint Paul.

Citywide Spring Cleanup Volunteers - Join others across Saint Paul residents and help clean up your neighborhood parks and streets. In honor of Earth Day, we will take to the streets and parks on Saturday, April 22. The event will take place from 9:00-11:30am so drop in anytime to clean up the city.

Garden Stewards - Garden Stewards are volunteer groups or individuals who care for gardens throughout the City of Saint Paul by planting, weeding, mulching and providing general garden maintenance.

Habitat Restoration Supervisors - If you are interested in improving our natural areas in the city and teaching other



volunteers about invasive species and native plants, this rewarding volunteer position is for you.

More opportunities will be posted even before the weather warms up, so check out stpaul.gov/naturalresources and click on the Volunteer link.



Cy Kosel, Natural Resources Manager
651-632-2412
Cy.Kosel@ci.stpaul.mn.us

Eric Thompson, Permit and Park Program Supervisor
651-632-2445
Eric.Thompson@ci.stpaul.mn.us

Arts and Gardens
651-632-2445
Eric Thompson
Tony Singerhouse

Environmental Education
651-632-2455
Faith Krogstad

Environmental Services
651-632-2457
Adam Robbins
Emily Dunlap
Shannon Montante

Forestry
651-632-5129

Volunteer Resources
651-632-2411
Tricia Wehrle

Newsletter Editor
Kaitlin Ostlie

Restoring the Floodplain

Excerpt from blog written by Brett Stolpestad and Brad Chatfield, Conservation Corps of Minnesota



A Conservation Corps member completing a canopy survey at Hidden Falls Regional Park.

The Mississippi River floodplain is Minnesota's centerpiece. A patchwork of cottonwood, maple, boxelder, hackberry, and ash make up the forest ecosystem, providing critical habitat for migratory birds and other river-dependent wildlife. The City of Saint Paul is home to a beautiful winding chain of parks along the Mississippi and uses a variety of management practices to augment the health of the floodplain ecosystem.

One particularly useful and beneficial technique is shelterwood harvesting, the process of gradually removing mature trees in a given area with the goal of establishing the next generation of desirable tree species. This process has the potential to increase biodiversity, improve wildlife habitat, and eliminate invasive species.

In recent years, prominent Saint Paul Parks including

Hidden Falls, Lilydale, and Crosby Farm Regional Parks have all been selected as sites for shelterwood harvest. The decision to focus on these parks has been, in part, a response to ecological threats including the

encroachment of emerald ash borer. The threat of emerald ash borer has led to the preemptive removal of ash tree throughout the floodplain, followed by several large-scale volunteer planting events.

Shelterwood harvest areas are replanted with native tree species. These young trees are protected with tree tubes, which facilitate growth and protect the saplings from hungry animals.



To learn more about the shelterwood harvesting process in our parks, visit our blog: restoresaint-paul.blogspot.com

Gravel: Elevated

What does local gravel and global climate have in common?



The Saint Paul Natural Resources gravel bed was expanded in 2016 to hold up to 200 bare root trees.

In May, the third National Adaptation Forum convenes at the Saint Paul RiverCentre. To connect concept and practice, the Mississippi Park Connection (MPC) and the Science Museum of

Minnesota (SMM) will be hosting a volunteer tree planting event for forum participants on May 8th, adding 40 new trees along Shepard Road to supplement and replace ash trees threatened by emerald ash borer. The

trees for this event are getting their start in a unique setting, the new gravel bed built by SMM and MPC volunteers and staff on the museum's plaza along Kellogg Boulevard.

What is a gravel bed? Gravel beds are simply planting beds filled with irrigated pea rock. Bare root trees are planted into the gravel and allowed to develop a fibrous root system prior to transplanting.

Why use a gravel bed? Bare root trees are a cost effective way to increase the number of trees

planted in Saint Paul. After being dug from the nursery, these trees often lack the fine roots necessary for growth which impacts tree establishment and survival. A gravel bed allows bare root trees to regrow fibrous roots prior to planting while also providing the flexibility to plant bare root trees in the fall.

During October of 2016, over eight cubic yards of soil and seven cubic yards of pea rock were moved by hand to build the gravel bed at the SMM. In the spring of 2017, a mix of 80 Kentucky coffeetree, northern catalpa, and Freeman maple will be installed in the gravel bed and then planted along Shepard Road in the spring and fall of 2017.

River Leadership Flowing in New Direction

In 2013 the City of Saint Paul developed the Great River Passage Plan, a comprehensive framework for creating vibrancy in the city's 3,500 acres of parkland along the river. Saint Paul Parks and Recreation Department is now implementing the next phase of the Great River Passage – a bold, strategic vision to steward and tap into the potential of the 26 miles of riverfront in Saint Paul. By implementing the plan, the city will create places and activities that strengthen existing connections and create



new ones along the Mississippi. Projects in the works include paddle share rental kayaks at Hidden Falls Regional

Park (paddleshare.org), trail improvements at Pig's Eye Regional Park, and the use of goats to control invasive species

in Regional Parks along the Mississippi River.

Learn more at GreatRiverPassage.org.

Get Outside this Winter at Phalen Freeze Fest

Get outside and celebrate the season with a variety of winter activities at Phalen Freeze Fest!

Phalen Freeze Fest started in 2015 as a way to get more people out to our parks in winter, and it is still going strong. The Saint Paul Natural Resources Education Program has brought together more than 10 different organizations this year to offer a range of activities for all ages and abilities at Phalen Lake.

Youth from Urban Roots' Conservation Program are working with an artist from In the Heart of the Beast to tell the story of Shingebiss – the duck that did not migrate and instead welcomed winter as a friend. Learn some lessons from Shingebiss and come have some fun outside with us!

Phalen Freeze Fest

Saturday, February 11 2:00 - 6:00 pm

Hear the Legend of Shingebiss
Pageant begins at 4:00pm

Cook Food Over A Fire
Build a Snow Cave
Play Boot Hockey
Fish Through the Ice
And More



bit.ly/freeze2017 | #PhalenFreezeFest

















**SAINT PAUL
NATURAL
RESOURCES**

Find St. Paul
Natural Resources
Online!

Facebook:
[www.facebook.com/
saintpaulnatural
resources](http://www.facebook.com/saintpaulnaturalresources)

Instagram:
[www.instagram.com/
saintpaulnatural
resources](http://www.instagram.com/saintpaulnaturalresources)

Blog:
[www.restoresaint
paul.blogspot.com](http://www.restoresaintpaul.blogspot.com)

Continued from article on page 1. Blooming Saint Paul Awards are sponsored by:



**UNIVERSITY OF MINNESOTA
EXTENSION**



**EGG|PLANT
URBAN FARM SUPPLY**

**LANDSCAPE
RESOURCES**



**BARTLETT
TREE EXPERTS**

**HORTICULTURAL
SOCIETY**

**PIONEER PRESS
TwinCities.com**



Blooming Saint Paul Awards Recipients:

Residential Awards		Garden Steward Award	
Golden	928 Como Ave W	Golden	Mississippi River Blvd at Summit Ave
Silver	1763 Princeton St		Jennifer and Ray Konyan
Bronze	628 Jessamine Ave W		Summit Monument Garden
Egg Plant Edible Awards		Garden Advocate Award	
Golden	110 Arlington Ave W	Golden	Lee and Jerry Shannon
Silver	1121 Argyle Street		
Bronze	855 Aurora Ave	Public Art Award	
Business/Institutional Awards		Golden	512 Snelling Avenue N.
Golden	St. Anthony Park Library		<i>Braided</i> - Mural by Greta McLain
Silver	Unity Church		
Bronze	Como Park Golf Course		