

## WebEx Success Tips and Tricks

- Please keep your cameras off
- You will be automatically muted when you join the meeting
- Do not put the WebEx on hold
- Make sure you do not have 2 audio functions on  
(example: the phone and computer audio) this will cause an echo
- For best performance, close the internet except for the WebEx and close larger programs
- You will be muted by the host during the WebEx to minimize background disturbances and eliminate more than one person talking at a time
- For any questions please use the chat function - the questions will go to the entire group
- Questions will be answered as they are received

1

# Highland Bridge PARKS ADVISORY COMMITTEE

08.04.2020

**RYAN** CONFLUENCE

IN ASSOCIATION WITH THE  
City of St. Paul  
Department of Parks & Recreation



2

## AGENDA

Introductions

Overview of Parks to Date

Design update on Parks A and C at 90%

- Amenities and Activities in Parks

Overview of Civic Spaces at 90%

Parks B and D 60%

Next Steps

- future site visit
- construction documentation



CONFLUENCE 1

3

## Project Team Contacts



### Nick Koch

Ryan Companies  
Phone: 612-492-4678  
[Nick.Koch@RyanCompanies.com](mailto:Nick.Koch@RyanCompanies.com)



### Mac Alberts

Ryan Companies  
Phone: 612-492-4313  
[Mac.Alberts@RyanCompanies.com](mailto:Mac.Alberts@RyanCompanies.com)



### Tony Barranco

Ryan Companies  
Phone: 612-492-4339  
[Tony.Barranco@RyanCompanies.com](mailto:Tony.Barranco@RyanCompanies.com)



### Maureen Michalski

Ryan Companies  
Phone: 612-492-4603  
[Maureen.Michalski@RyanCompanies.com](mailto:Maureen.Michalski@RyanCompanies.com)



### Ellen Stewart

Parks and Recreation  
Phone: 651-266-6380  
[Ellen.Stewart@ci.stpaul.mn.us](mailto:Ellen.Stewart@ci.stpaul.mn.us)



### Terry Minarik

Confluence  
Phone: 612-333-3702 x501  
[T.Minarik@ThinkConfluence.com](mailto:T.Minarik@ThinkConfluence.com)



### Brad Aldrich

Confluence  
Phone: 612-333-3702 x503  
[BAldrich@ThinkConfluence.com](mailto:BAldrich@ThinkConfluence.com)

Highland Bridge

CONFLUENCE 2

4

## Project Background

### Ford Site Project Studies

Since 2006, when Ford Motor Company announced its intent to close the plant, the City of Saint Paul has been working actively to plan for the site's future.

### Professional Studies

- A total of 14 professional studies conducted by the City and additional studies by Ford Motor Company have examined a wide range of topics, such as the potential of industrial reuse, a geotechnical analysis of the tunnels under the site, open space priorities, sustainable design, stormwater management, and traffic impacts.
- The studies were essential to understand opportunities for and limitations on the redevelopment of the site – economically, environmentally, socially, and within the context of the community. The studies identified infrastructure efficiencies, cost-effectiveness, opportunities for environment design and conservation, and how to strike a balance between development and the creation of vibrant public spaces
- The Ford Site Zoning and Public Realm Master Plan, adopted by the Saint Paul City Council in 2017, is the culmination of a decade of planning for the site. It provides a framework to guide mixed-use redevelopment of the 122-acre main assembly plant parcel and the adjacent 13-acre rail yard. It does not include the 22-acre river parcel ("Area C").

### Community Engagement and Adoption

- Since 2007, the City has been seeking the community and other stakeholders' visions and priorities for the Ford site. The thousands of ideas and suggestions that we have received over the past 10 years, and through more than 140 public meetings of all sizes, have shaped the redevelopment framework for the site.

<https://www.stpaul.gov/departments/planning-economic-development/planning/ford-site-21st-century-community>

Highland Bridge

CONFLUENCE 4

5

## Project Name

LOGO

HIGHLAND  
*Bridge*

Highland Bridge

CONFLUENCE 3

6

## Role of Parks Advisory Committee (PAC)

The Parks Advisory Committee provides volunteer opportunities for stakeholders to share insight and resources and serve to build and sustain relationships between the community and the City of St. Paul. Members of the PAC are expected to represent the views of park users and to work collaboratively with each other and the project team to provide insight, feedback and information to the community about the project.

Responsibilities of PAC members include:

- Become knowledgeable about the Project and its goals,
- Understand and represent the park and recreation needs of the community and park users,
- Act as community liaisons for the project,
- Provide feedback on the park plans,
- Help identify priorities and needs within the Park System and within their communities,
- Provide insight on the direction of Park development,
- Report back to the community, on the design process, information presented, and the development of the parks,
- PAC members are expected to attend and participate in PAC meetings throughout the design process.

Highland Bridge

CONFLUENCE 4

7

## THE FORD SITE PARK SYSTEM

### City Parks

- ① Park A
- ④ Park B
- ⑤ Park C
- ⑥ Park D

### Civic Parks

- ② Outlot B
- ③ Outlot C
- ⑧ Outlot D
- ⑦ Shared Bike/Ped Paths



Highland Bridge

CONFLUENCE 5

8

## Ford Site Redevelopment Timeline | Milestones

- **Park A and Park C**
- *Outlot C & Outlot D*
  - 90% Plans – July 2020
  - 100% Plans – August 2020
  - Construction Start – Fall 2020
- **Park B and Park D**
  - 60% Plans – Sept 2020
  - Construction – 2022

Highland Bridge

CONFLUENCE 6

9

## Questions?

Please type any questions you have regarding the information that has been presented so far and we will answer them as we receive them.

Highland Bridge

CONFLUENCE 7

10



## FACTORS OF DESIGN & PRIORITIES

### Public Priorities Activities & Amenities

Surveys, Meetings,  
Input, Ideas, etc.



### System Needs

**Parks**  
**Department**  
Maintenance,  
Planning, Recreation



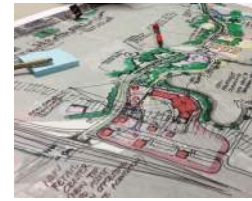
### Budget Realistic

Infrastructure,  
Maintenance, Balance



### Design Physical Layout

Program, Character,  
Context, Stormwater

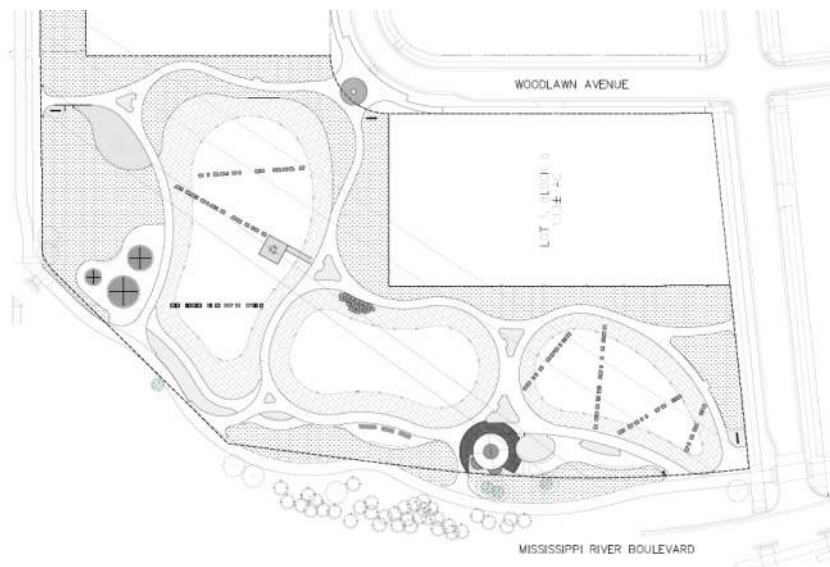


Highland Bridge

CONFLUENCE 8

11

## Design Update on Park A



Highland Bridge

CONFLUENCE 9

12

## Design Update on Park A



Highland Bridge

CONFLUENCE 1  
0

13

## Design Update on Park A – Climbing Options



Highland Bridge

CONFLUENCE 1  
1

14

## Design Update on Park A – Skate Components



Highland Bridge

CONFLUENCE 1  
2

15

## Design Update on Park C



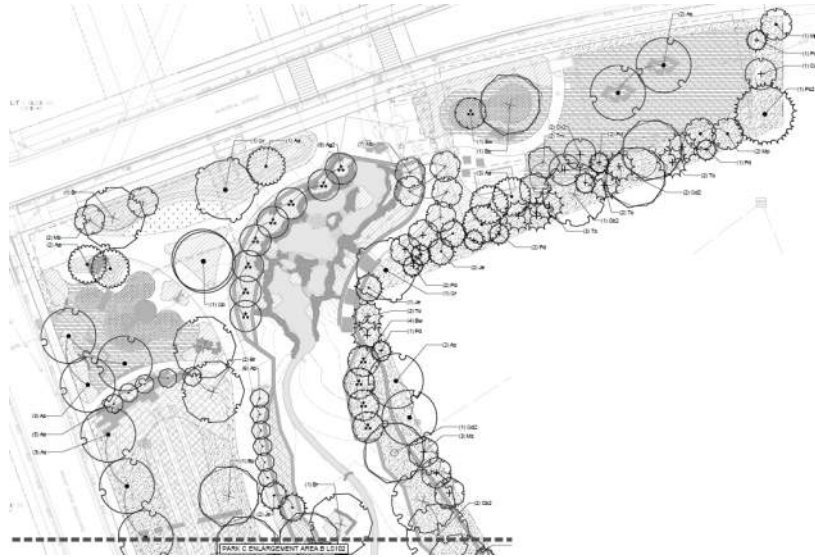
Highland Bridge

CONFLUENCE 1  
3

16



## Design Update on Park C



Highland Bridge

CONFLUENCE 1  
4

17

## Design Update on Park C



1



2



3



4



5



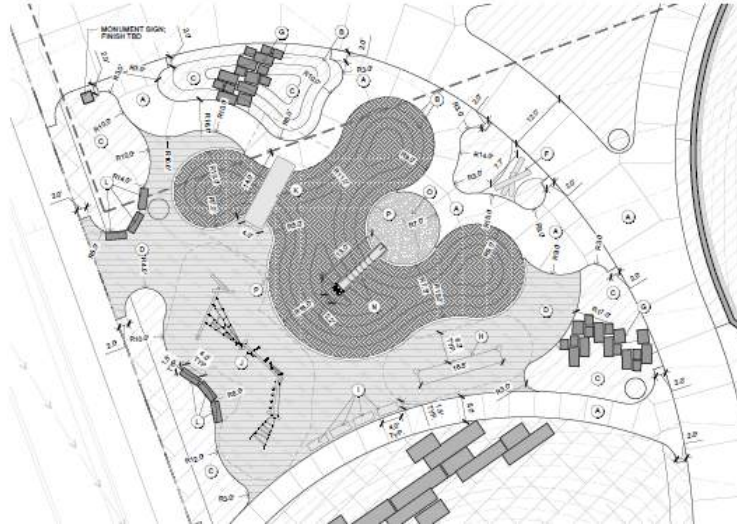
6

Highland Bridge

CONFLUENCE 1  
5

18

## Design Update on Park C



Highland Bridge

CONFLUENCE 1  
6

19

## Design Update on Park C – Amenities



1



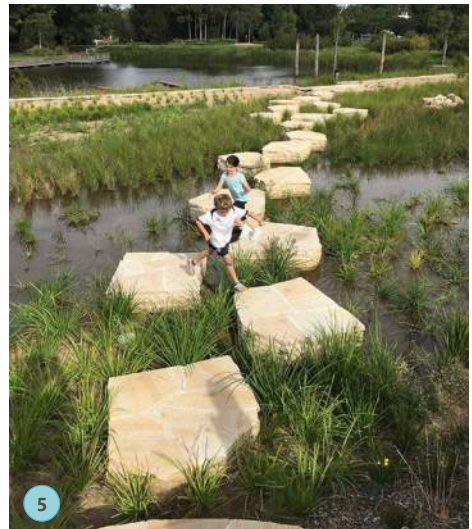
3



2



4



5

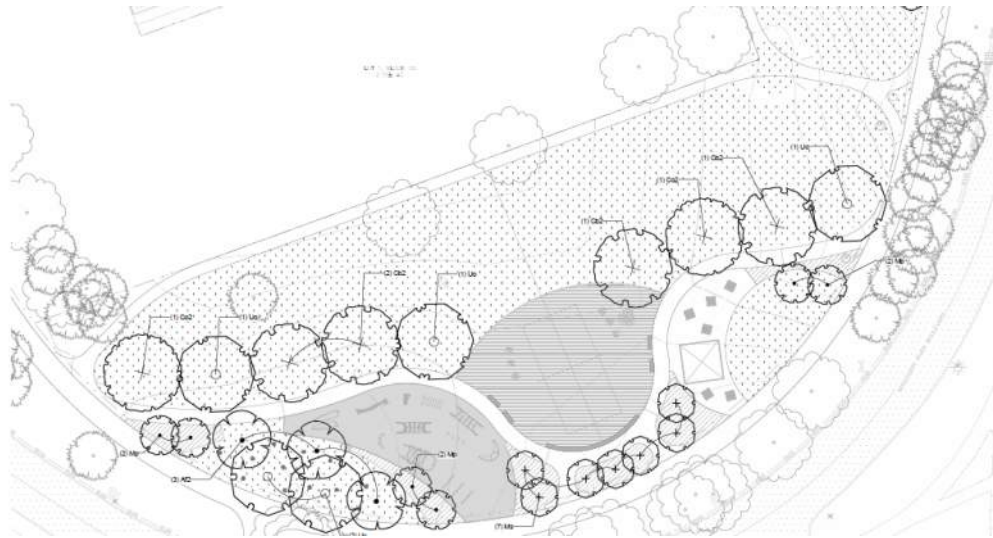
Highland Bridge

CONFLUENCE 1  
7

20



## Design Update on Park C



Highland Bridge

CONFLUENCE 1  
8

21

## Design Update on Park C



Highland Bridge

CONFLUENCE 1  
9

22

## Design Update on Park C – Adult Fitness



Highland Bridge

CONFLUENCE <sup>2</sup>/<sub>0</sub>

23

## Design Update on Park C – Amenities



Highland Bridge

CONFLUENCE <sup>2</sup>/<sub>1</sub>

24



## Design Update on Park C

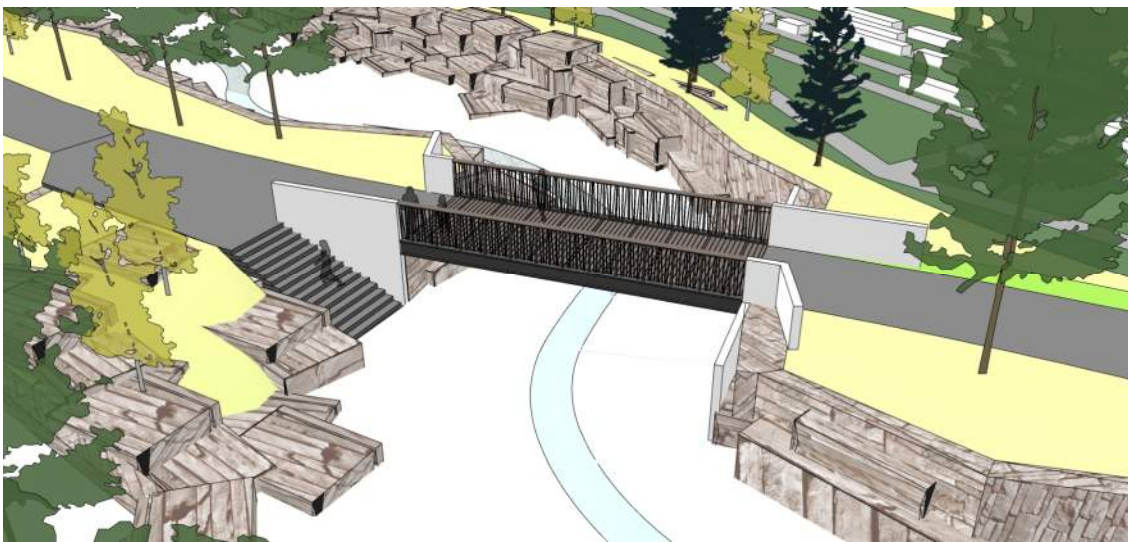


Highland Bridge

CONFLUENCE <sup>2</sup>/<sub>2</sub>

25

## Design Update on Park C



Highland Bridge

CONFLUENCE <sup>2</sup>/<sub>3</sub>

26

## Design Update on Park C



Highland Bridge

CONFLUENCE 2  
4

27

## Design Update on Park C



Highland Bridge

CONFLUENCE 2  
5

28



## Design Update on Park C – Ravine Character



1

Highland Bridge



3



4



2



5

CONFLUENCE <sup>2</sup>/<sub>6</sub>

29

## Design Update on Construction



Highland Bridge

CONFLUENCE <sup>2</sup>/<sub>7</sub>

30

## Design Update on Construction

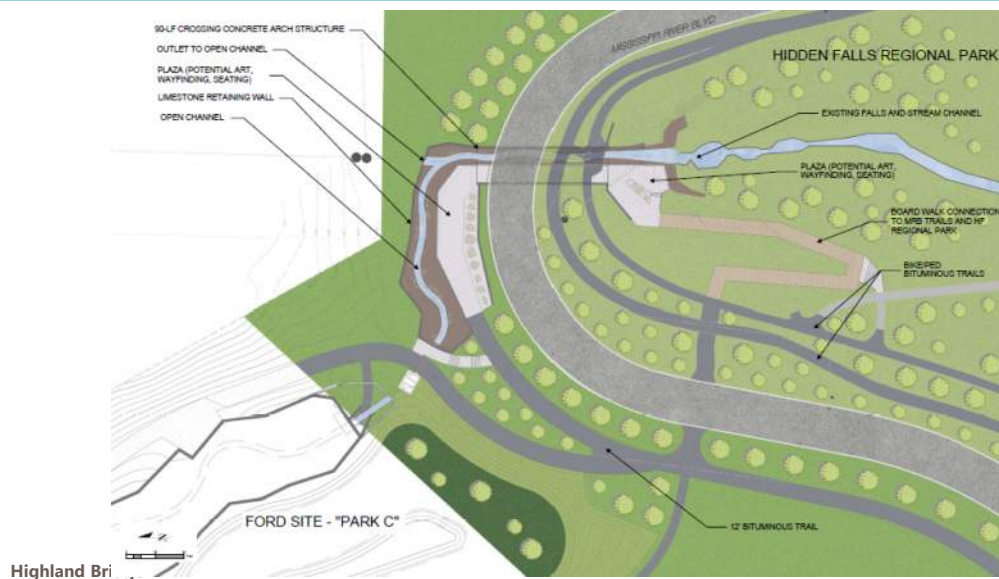


Highland Bridge

CONFLUENCE 2  
8

31

## Design Update on Park C



Highland Bri

CONFLUENCE 2  
9

32



## Design Update on Park C



Highland Bridge

CONFLUENCE 3  
0

33

## Questions?

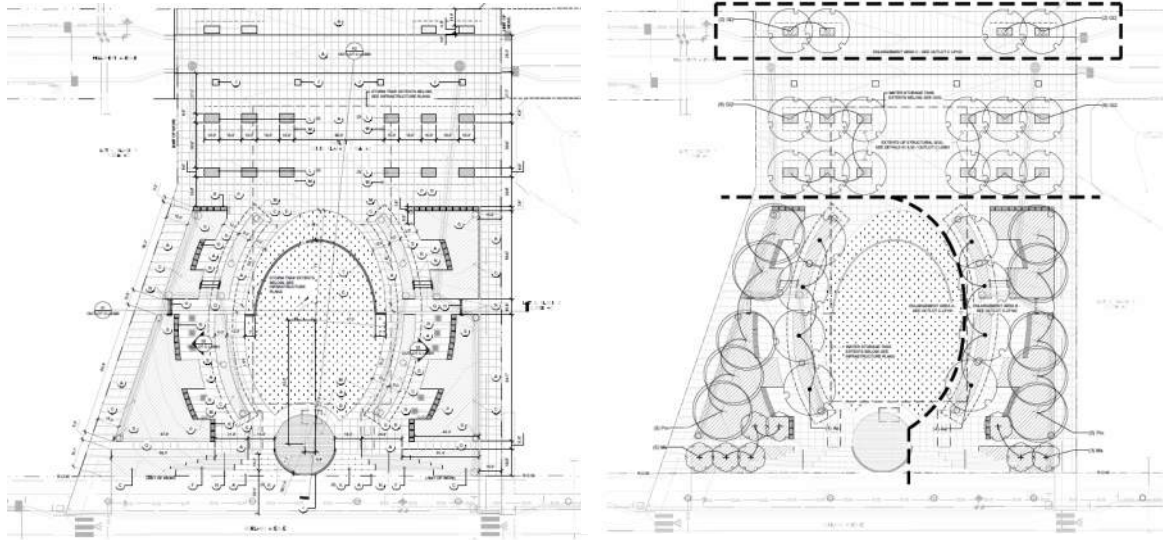
Please type any thoughts, ideas or questions you have regarding the information that has been presented so far and we will answer them as we receive them. We would appreciate your feedback.

Highland Bridge

CONFLUENCE 3  
1

34

## Civic Spaces at 90%



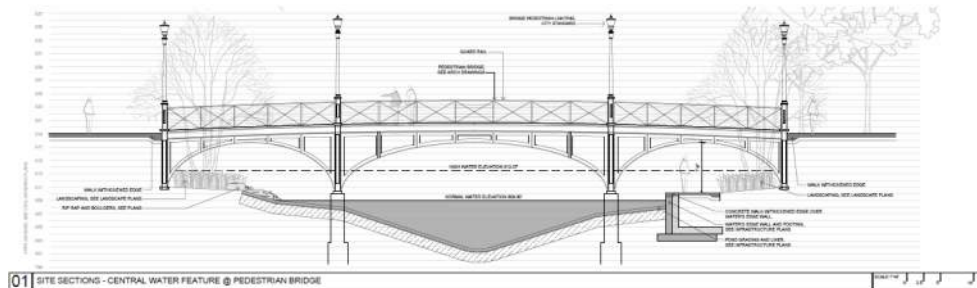
35

## Civic Spaces at 90%

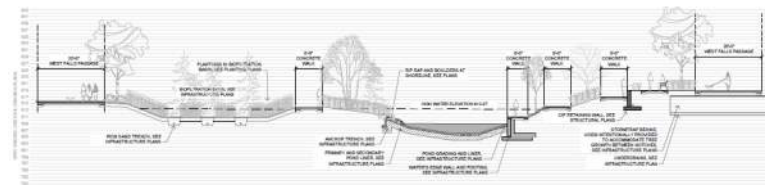


36

## Civic Spaces at 90%



01 SITE SECTIONS - CENTRAL WATER FEATURE @ PEDESTRIAN BRIDGE



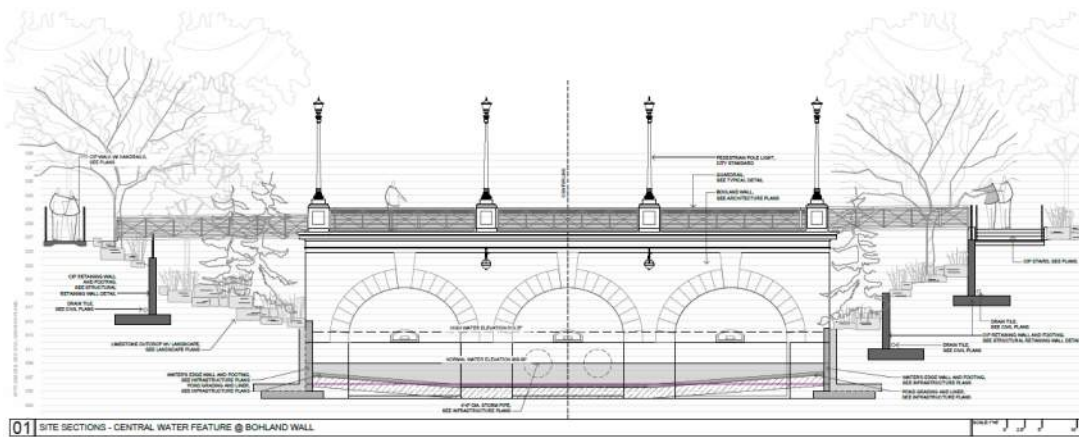
02 SITE SECTIONS - CENTRAL WATER FEATURE

Highland Bridge

CONFLUENCE 3  
4

37

## Civic Spaces at 90%



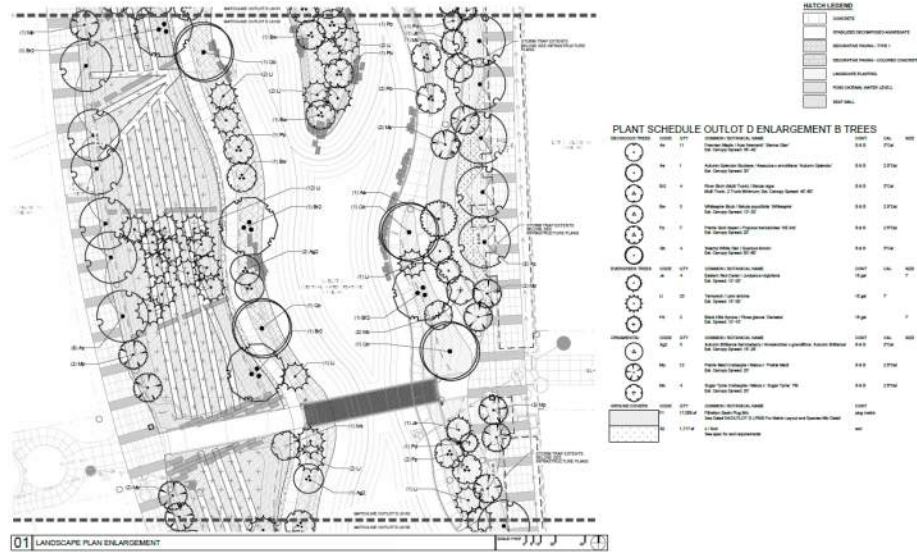
01 SITE SECTIONS - CENTRAL WATER FEATURE @ BOHLAND WALL

Highland Bridge

CONFLUENCE 3  
5

38

## Civic Spaces at 90%

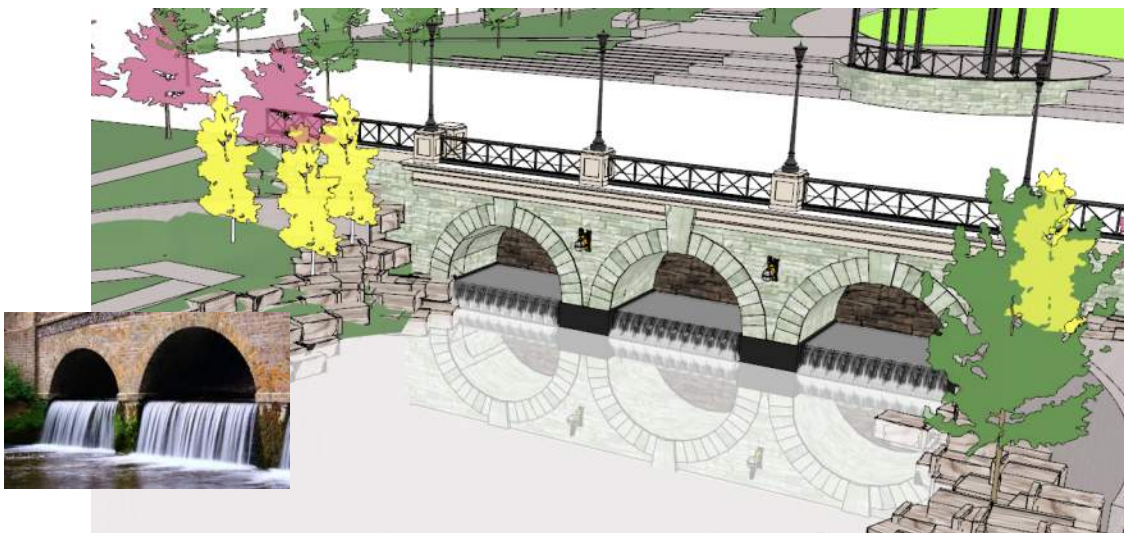


Highland Bridge

CONFLUENCE 3  
6

39

## Civic Spaces at 90%



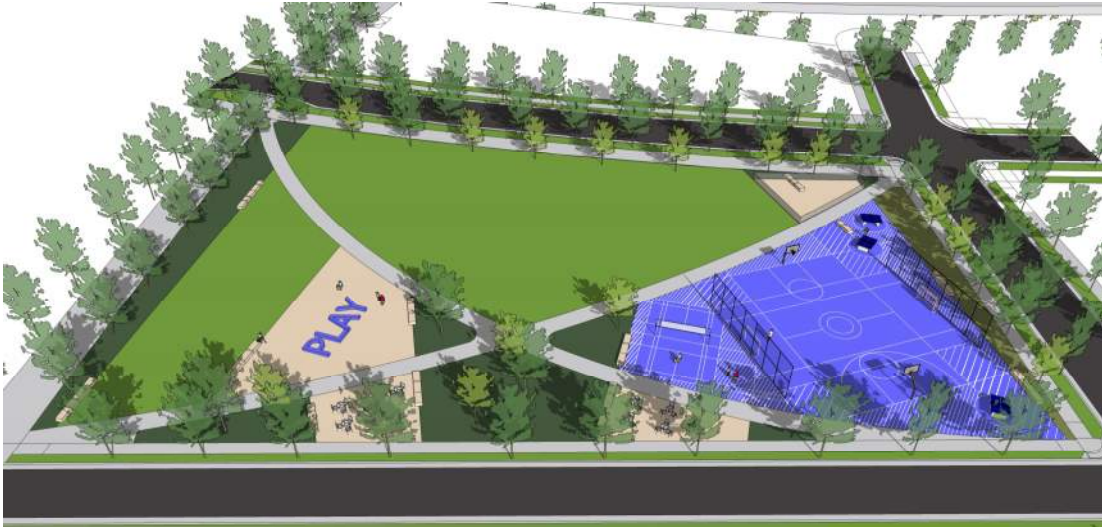
Highland Bridge

CONFLUENCE 3  
7

40



## Parks B and D Update



Highland Bridge

CONFLUENCE <sup>3</sup>/<sub>8</sub>

41

## Park B Playground Options



Highland Bridge

CONFLUENCE <sup>3</sup>/<sub>9</sub>

42

## Park B Playground Options



Highland Bridge

CONFLUENCE 4  
0

43

## Park B Playground Options



Highland Bridge

CONFLUENCE 4  
1

44



## Park B Playground Options



Highland Bridge

CONFLUENCE 4  
2

45

## Park B Update



Highland Bridge

CONFLUENCE 4  
3

46

## Parks B Update

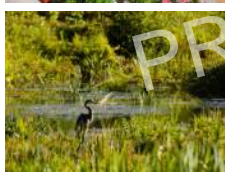


Highland Bridge

CONFLUENCE 4  
4

47

## Parks D Update



Highland Bridge



CONFLUENCE 4  
5

48



## Feedback

Please type any thoughts, ideas or questions you have regarding the information that has been presented and we will answer them as we receive them. We would appreciate your feedback.

Highland Bridge

CONFLUENCE 4  
6

49

## Next Steps

- Site Visit TBD
- 100% Set is due by September for Civic Spaces and Parks A & C
- Final design of Park B and D
- PAC Meeting TBD
- Construction

Questions?

CONFLUENCE 4  
7

50

## Area Parks, Trails and Open Space



Highland Bridge

CONFLUENCE

51

## THE FORD SITE PARK SYSTEM



2021 Complete Parks Facilities or Public Open Spaces



2022 Complete Parks Facilities or Public Open Spaces



2023 Complete Parks Facilities or Public Open Spaces



Highland Bridge

CONFLUENCE

52