



Parks and Recreation  
400 City Hall Annex  
25 West 4th Street  
Saint Paul, MN 55102

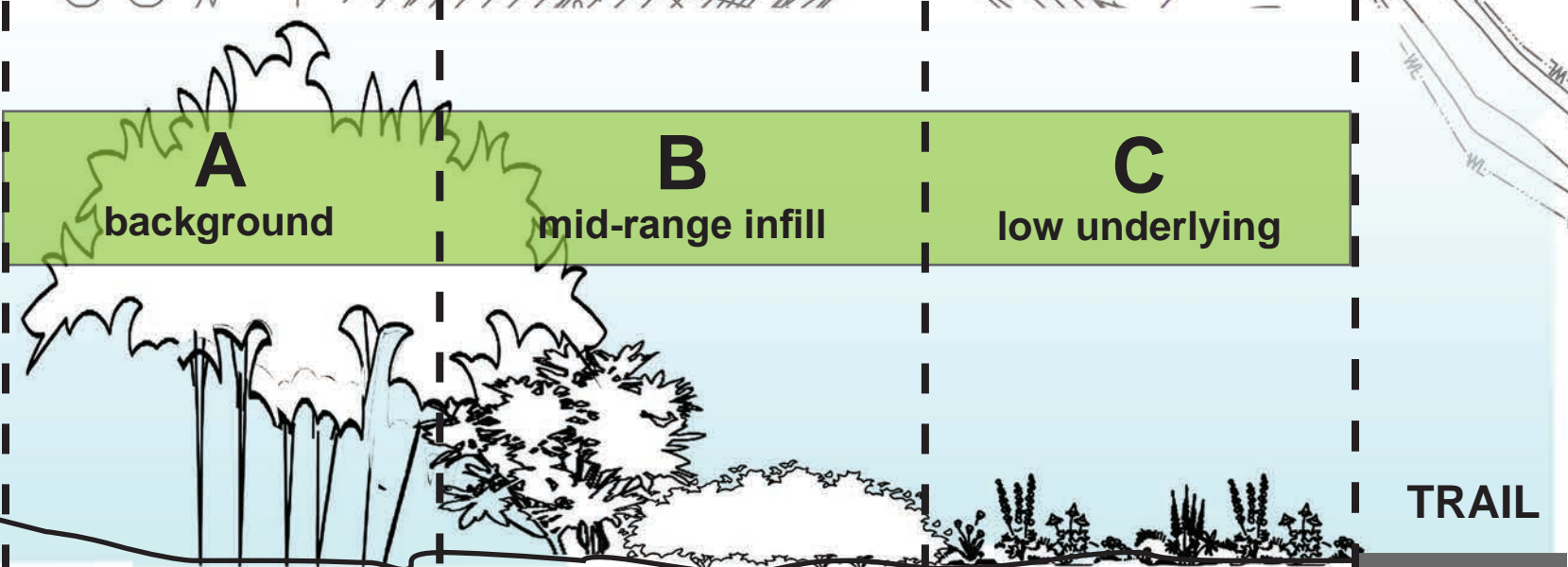
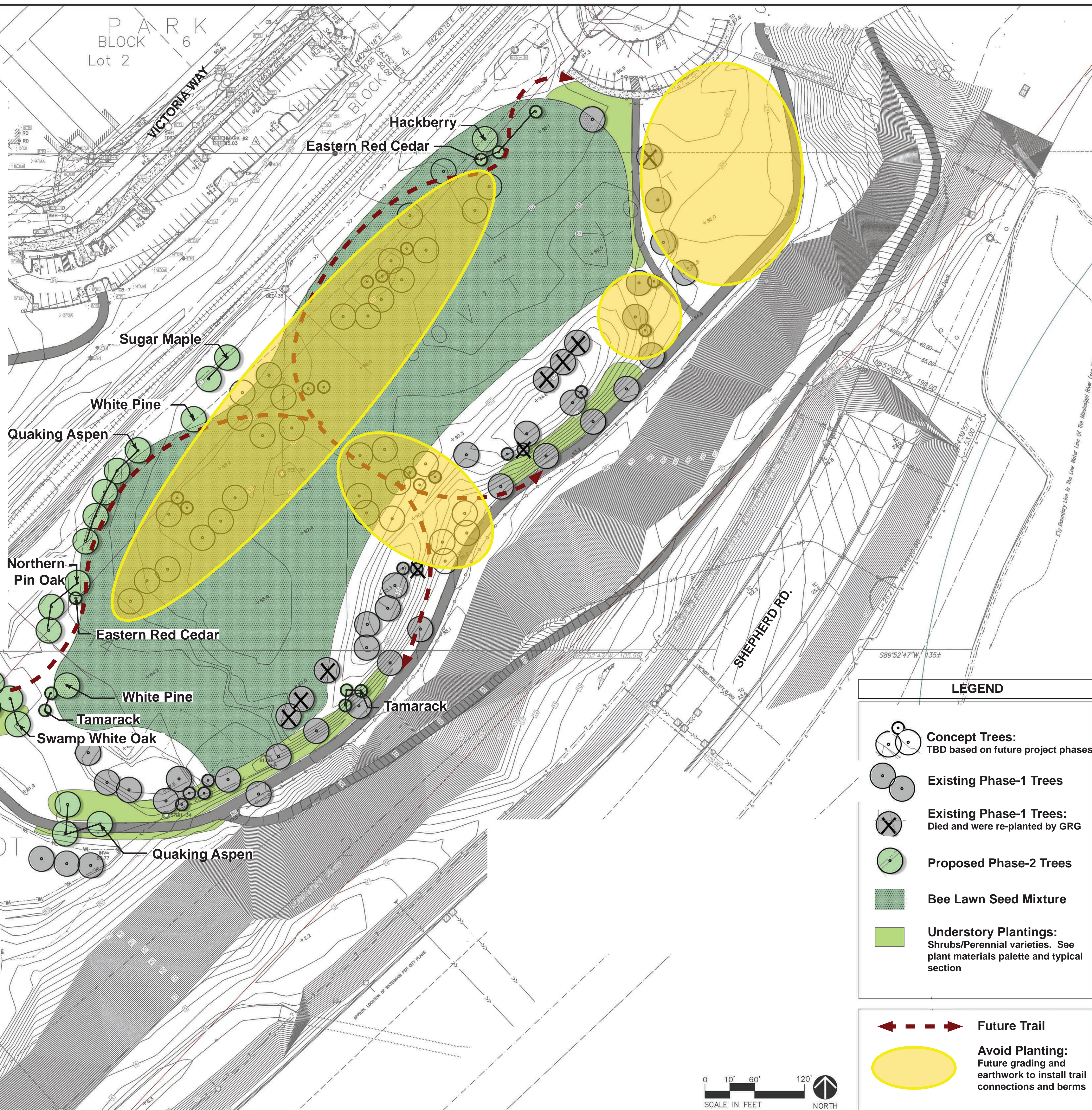
**PLANT MATERIALS + PALETTE GUIDE**

TREES				
Quantity	Common Name	Scientific Name	Size/Type	Notes
3	Northern Pin Oak	<i>Quercus ellipsoidalis</i>	1.5" B&B	
8	Quaking aspen	<i>Populus tremuloides</i>	1.5" B&B	
4	Eastern red cedar	<i>Juniperus virginiana</i>	8' ft B&B	
2	White Pine	<i>Pinus strobus</i>	1.5" B&B	
3	Alleghany Serviceberry	<i>Amerlanchier laevis</i>	1.5" B&B	
1	Common Hackberry	<i>Celtis Occidentalis</i>	1.5" B&B	
2	Swamp White Oak	<i>Quercus bicolor</i>	1.5" B&B	
5	Tamarack	<i>Larix Laricina</i>	8' ft B&B	
3	Sugar Maple	<i>Acer saccharum</i>	1.5" B&B	

**SHRUBS / PERENNIALS**  
**NOTE:** Quantities and size to be determined by Great River Greening adapted to project budget and plant resource availability as needed. General guidance on location and layering of planting is provided w/ note key and typical section

Quantity	Common Name	Scientific Name	Size/Type	Notes
-	High bush cranberry	<i>Viburnum trilobum</i>	-	A - Background
-	Prairie Willow	<i>Salix humilis</i>	-	A - Background
-	Redosier dogwood	<i>Cornus sericea</i>	-	A - Background
-	Witch hazel	<i>Hamamelis virginiana</i>	-	A - Background
-	Sand Cherry	<i>Prunus pumila</i>	-	B - mid-range infill
-	Bush Honeysuckle	<i>Diervla Lonicera</i>	-	B - mid-range infill
-	Winterberry	<i>Ilex verticillata</i>	-	B - mid-range infill
-	Butterfly Milkweed	<i>Asclepias tuberosa</i>	-	B - mid-range infill
-	Blue False Indigo	<i>Baptisia australis</i>	-	B - mid-range infill
-	Rough Blazingstar	<i>Liatris aspera</i>	-	B - mid-range infill
-	Maximilian's sunflower	<i>Helianthus maximiliani</i>	-	B - mid-range infill
-	Old Field Juniper	<i>Juniperus communis</i>	-	C - low underlying
-	Aster Varieties	<i>Aster Spp.</i>	-	C - low underlying
-	Sedge Vareties	<i>Carex spp.</i>	-	C - low underlying
-	Downy blue violet	<i>Viola sororia</i>	-	C - low underlying
-	Cardinal Flower	<i>Lobelia cardinalis</i>	-	C - low underlying
-	Little bluestem	<i>Schizachyrium scoparium</i>	-	C - low underlying

SEED MIX - BEE LAWN				
Quantity	Common Name	Scientific Name	Size/Type	Notes
1,192 LBS	UMN Bee Lawn seed mix	varies by mix	-	Assumes seeding rate of 5lbs./1,000sf

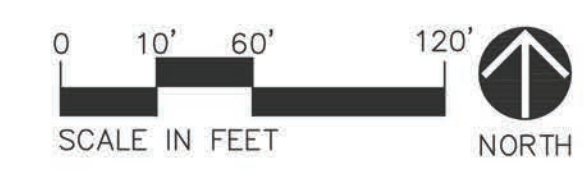


**TYPICAL SECTION: Understory Plantings**  
Shrub and perennial guide adjacent to pedestrian areas. See plant materials and palette guide

**LEGEND**

- Concept Trees: TBD based on future project phases
- Existing Phase-1 Trees
- Existing Phase-1 Trees: Died and were re-planted by GRG
- Proposed Phase-2 Trees
- Bee Lawn Seed Mixture
- Understory Plantings: Shrubs/Perennial varieties. See plant materials palette and typical section

- Future Trail
- Avoid Planting: Future grading and earthwork to install trail connections and berms



**CONCEPT PLAN - PHASE-2 PLANTING GUIDE**

City of Saint Paul Department of Parks and Recreation  
**Victoria Park**  
852 Hathaway Street, Saint Paul, MN 55102

**DRAFT**  
**05/07/2020**