

MEETING #3

Design Advisory Committee

March 9, 2017

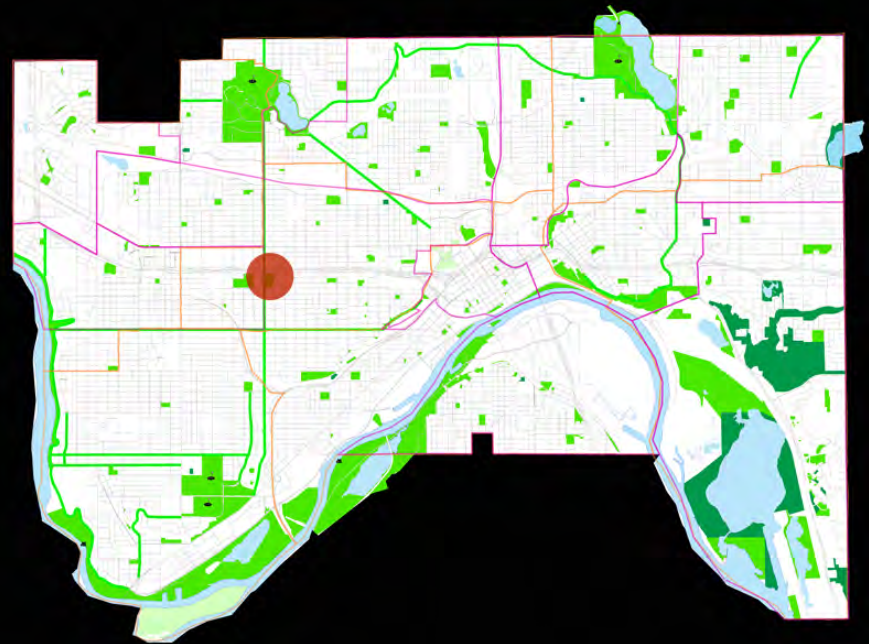
5:00-6:30pm

Saint Paul Parks and Recreation

Jimmy Lee Play Area

Agenda

Welcome & Introductions
Project Recap & Updates
Concept Plan Details
Discussion
Next steps



Project Overview:

Project Goal: *Create a concept plan for improvements to Jimmy Lee Play Area to improve the play area and create a vibrant public space.*

www.stpaul.gov/JimmyLeePlayArea



Meeting Goals:

- Update committee on project status*
- Review final play area concept*
- Select 5-12 play area equipment*
- Discuss community preference for public art*

Project Schedule:

July – September 2016

- Internal meetings and Discussion
- Community outreach: Pop Up meeting at Family Fun Night, assemble Design Advisory Committee, and Manage online survey

October 12, 2016 – First Design Advisory Committee Meeting

- Introduce the project, review survey results, discuss site organization options and determine main priorities for the site

December 14, 2016 – Second Design Advisory Committee Meeting

- Review concept plan options, determine preferred play equipment type, select plan to develop

★ March 2017 – Final Design Advisory Committee Meeting or Project Open house

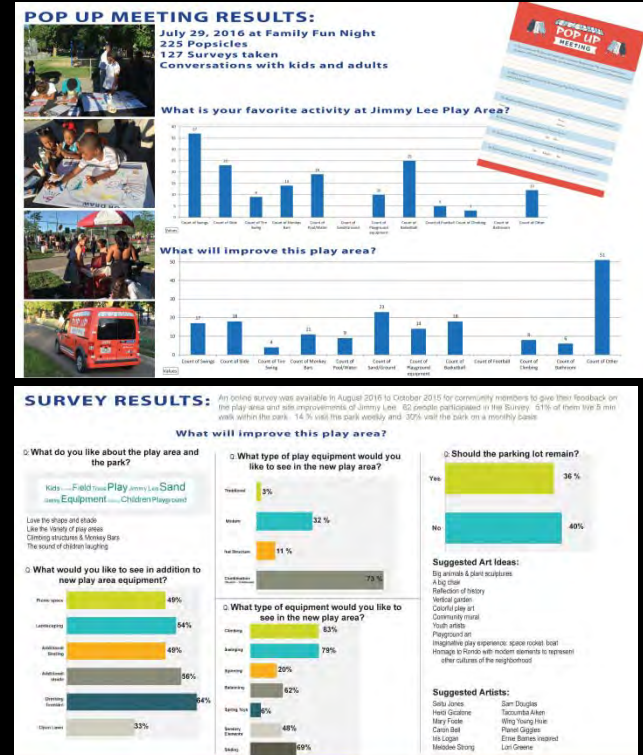
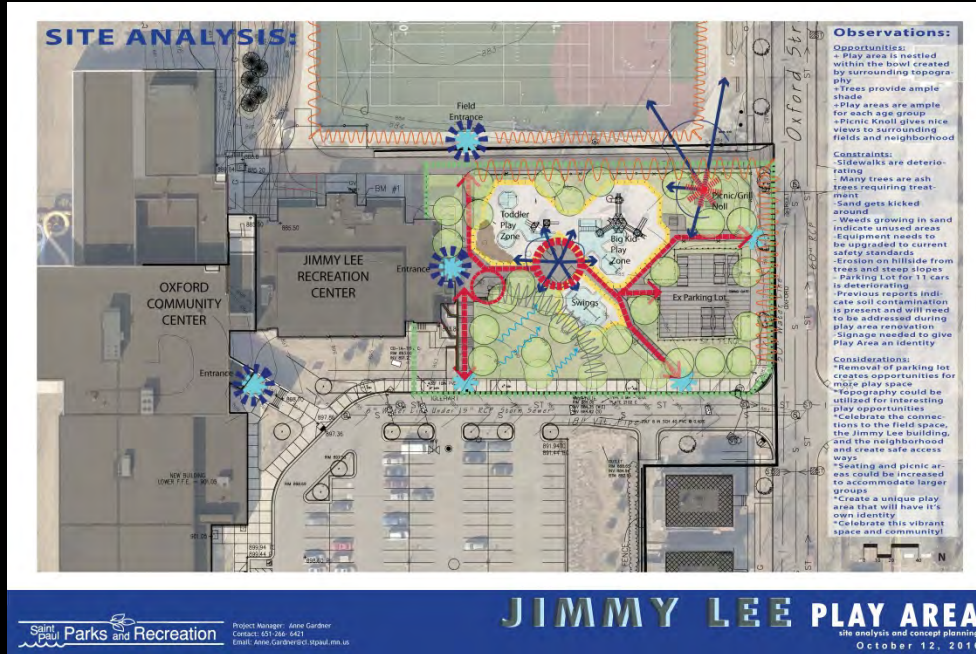
- Present final design for Jimmy Lee Play Area

March – April 2017 (tentative)– Develop construction documents

To be determined - 2017– Bid Project

Summer 2017 (To be determined)– Construction starts

Meeting 1:



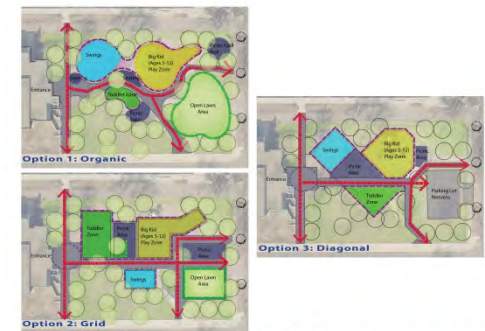
Age 2-5 STYLE OF EQUIPMENT: Climbers, Platform, Combination



Age 5-12 STYLE OF EQUIPMENT: Climbers, Platform, Combination



SITE ORGANIZATION CONCEPTS:



Meeting 2:

TOWER CLIMBER (option 1):



SKYWALK (option 1):



SKYRISE CLIMBER (option 1):



TOWER HUT 2 (option 2):



Saint Paul Parks and Recreation

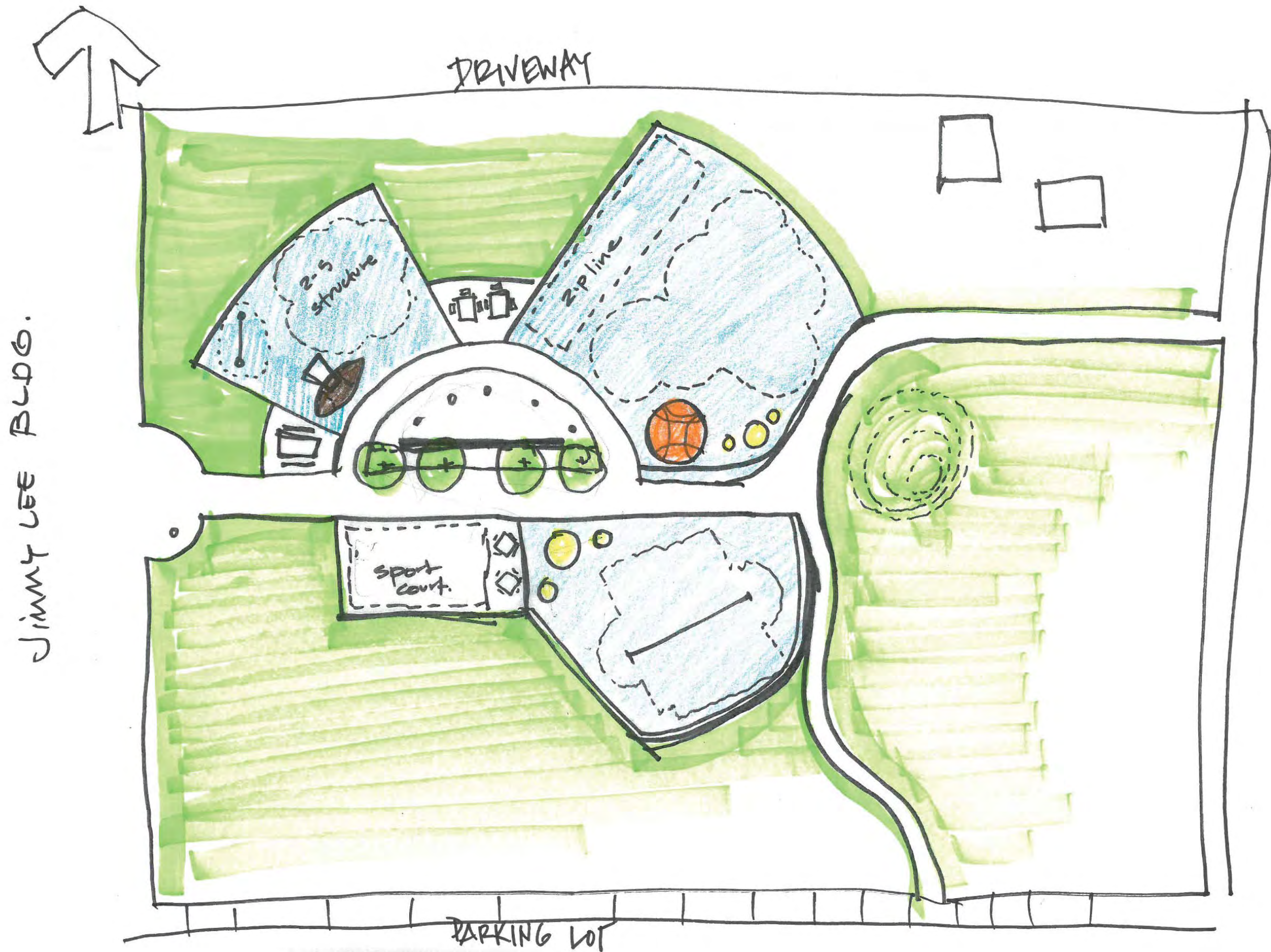
Project Manager: Anne Gardner
Contact: 651-266-6421
Email: Anne.Gardner@ci.stpaul.mn.us

JIMMY LEE PLAY AREA
concept plan
February 2017

Jimmy Lee Play Area
design advisory committee

Play Equipment Options





PLAY CONCEPTS:

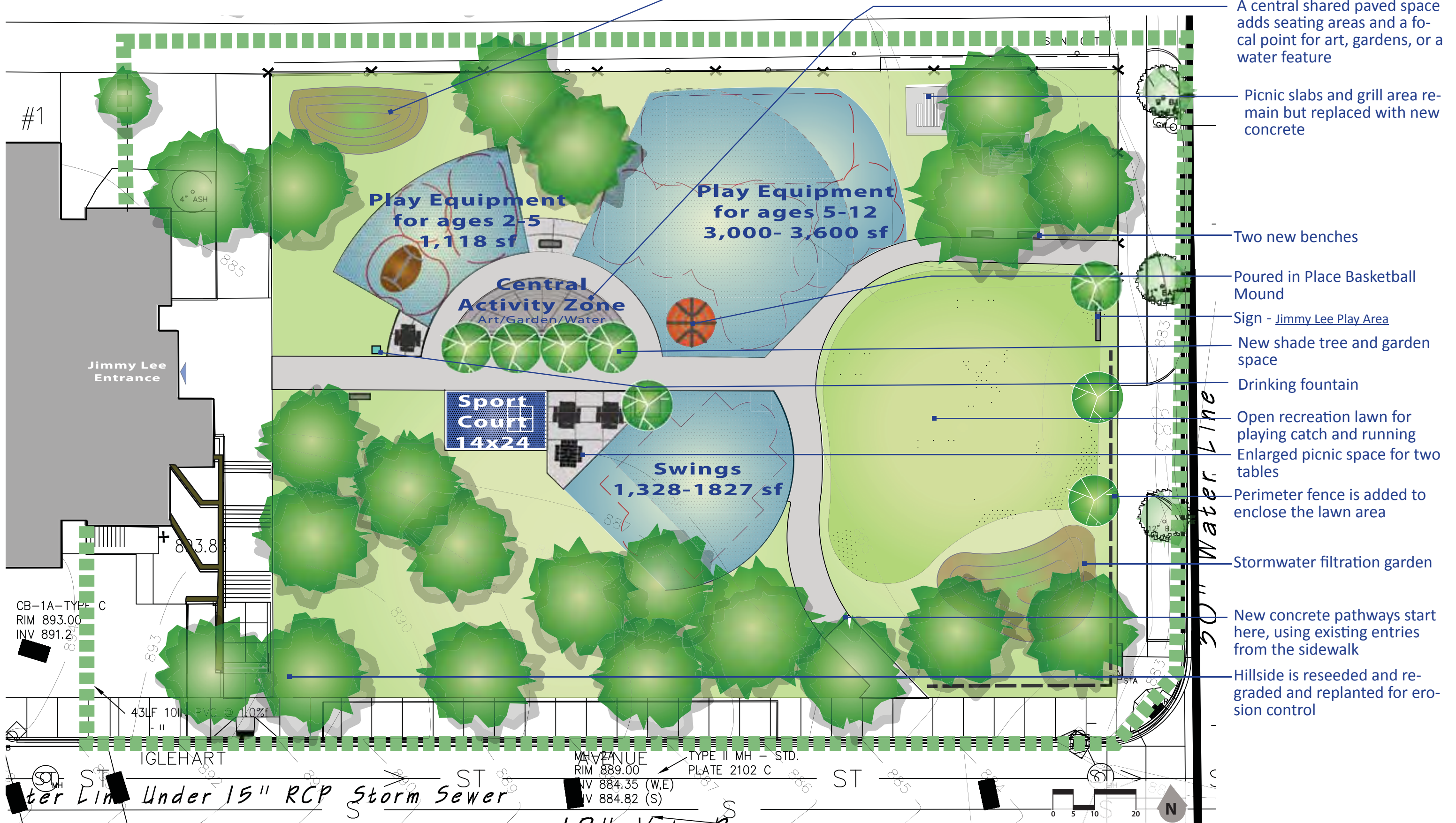


SPORT COURT

MOUNDS

BALLS

PLAY AREA LAYOUT:



Stormwater Filtration Garden

A central shared paved space adds seating areas and a focal point for art, gardens, or a water feature

Picnic slabs and grill area remain but replaced with new concrete

Two new benches

Poured in Place Basketball Mound

Sign - Jimmy Lee Play Area

New shade tree and garden space

Drinking fountain

Open recreation lawn for playing catch and running

Enlarged picnic space for two tables

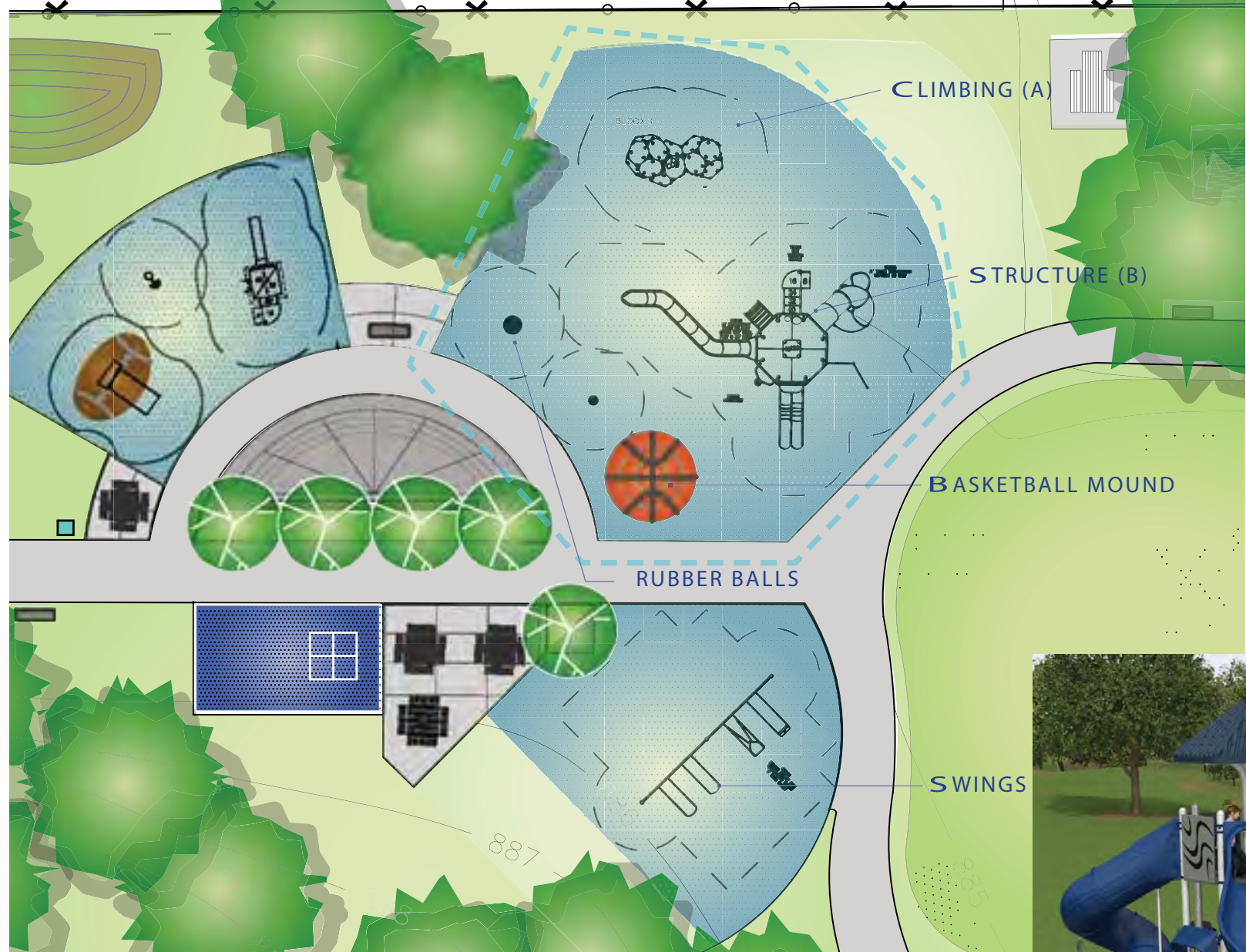
Perimeter fence is added to enclose the lawn area

Stormwater filtration garden

New concrete pathways start here, using existing entries from the sidewalk

Hillside is reseeded and regraded and replanted for erosion control

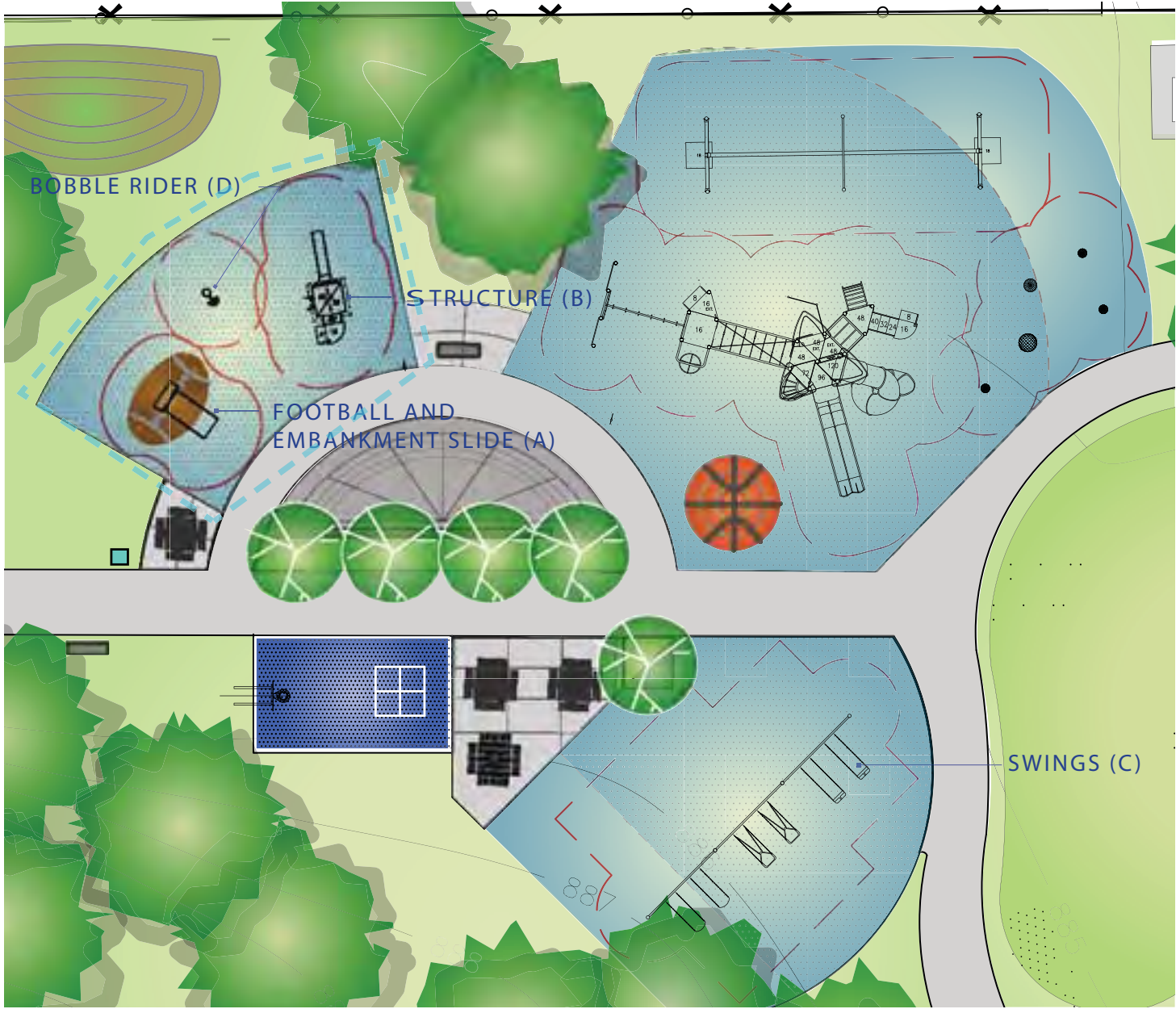
PLAY AREA LAYOUT: 5-12 Equipt - Option A



PLAY AREA LAYOUT: 5-12 Equipt - Option B



PLAY AREA LAYOUT: 2-5 Equipt



PANEL OPTIONS:



ART OPTIONS:



Who is Jimmy Lee?



SENSORY PANELS OR BENCH

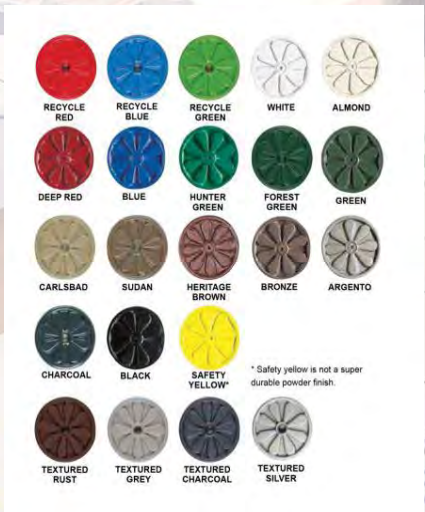


PANELS WITH INTERPRETIVE BOARD



SCULPTURAL LETTERS

WATER FEATURE & FURNISHINGS:



SIGN TYPE B5 SMALL IDENTIFICATION

MISTING WATER FEATURES

FURNISHINGS & SIGNAGE

Discussion



1. Which option do you prefer for 5-12 equipment?
2. Which art option do you prefer?
3. What sorts of themes can inspire the central space?

Moving Forward....

