

Project Description:

Develop a concept plan for the phased improvements to Rice Park to revitalize this significant public space in Saint Paul located on the block bounded by Washington Street, 5th Street, 4th Street, and Market Street. The park is 1.6 acres.

Project Background:

- St Paul's first public space since 1849
- Rice Park is an urban park that serves many individuals and hosts many events
- The Saint Paul Garden club raised funds to address the need for improvements at Rice Park
- The design process will develop a concept plan through a community design process
- The design process will identify any major elements needed to revitalize Rice Park
- The design process will develop a budget for fund raising to determine construction timeline
- There is no funding for implementation of the concept plan at this time

Project Schedule:

Oct 20-Nov 7- Community Input Survey

November 19, 2014 - Design Advisory Committee Meeting #1
Review survey results, site analysis, and identify key issues to address

January 21, 2014 - Design Advisory Committee Meeting #2
Develop planning diagrams and basic concept plans. Present precedent projects and ideas

March 3, 2015- Design Advisory Committee Meeting #3
Review and approve updated concept design plan

April 8, 2015 - Open house
Share final concept design at a public open house

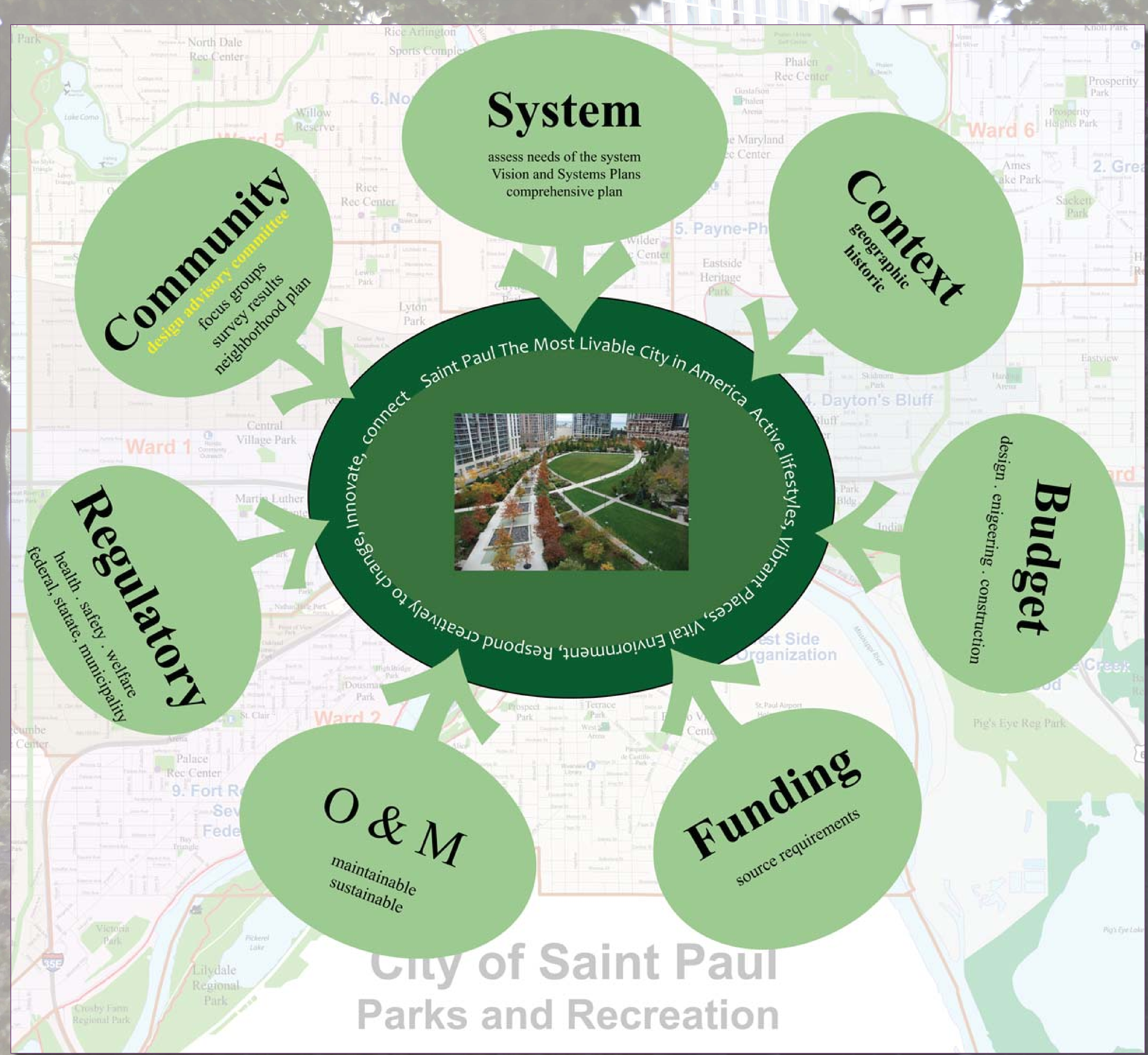
Next Steps: Fundraising for Implementation: 2016-17 CIB Request & Private Fundraising Effort

How does the Design Advisory Committee process work?

- Design Advisory Committee determines the direction of the concept design
- Decisions for moving forward will be made by consensus.
- Project information will be available to the public on the city website:
www.stpaul.gov/RICEPARKDESIGN
- Meetings are open to the public.
- Design Advisory Committee meetings end after concept design development is complete and consensus has been reached for major project elements

Design Advisory Committee:

- Betsy Kelly, St Paul Garden Club
 Colleen Fitzpatrick, St Paul Garden Club
 Amy Mino, Landmark Plaza
 Pat Steineman, St Paul Hotel
 Nancy Huart, Travellers
 Greg Fouks, JJ Hill Library
 David Lilly, Ordway
 Kathy Ross/Tim Wolfgram, Xcel Energy
 Andrea McKennan, George Latimer Central Library
 Dave Haley, Ramsey County
 Ruth Huss, Resident
 Tim Griffin, Capitol River Council Representative



Project Design Goals:

ENCLOSE

Preserve the sense of enclosure from the buildings as a significant historic feature of the park

- Selectively remove trees to preserve sightlines to buildings and maintain sense of enclosure

INVITE

Create a welcoming and safe place for all users

- Reinforce entry points and edges
- Improve lighting and decrease hiding places by selectively removing trees

UPGRADE

Improve infrastructure to support operation staff and programmed use of space

- Upgrade irrigation and electrical system for improved lawn and to accommodate events

ACCOMMODATE

Maintain space for large events but also provide space for small groups and 'conversational seating'

- Provide seating for small groups to sit for lunch such as moveable tables and chairs

CONSOLIDATE

Organize and limit the number of monuments and plaques on site

- Design a location for all significant plaques and historical signs

ACTIVATE

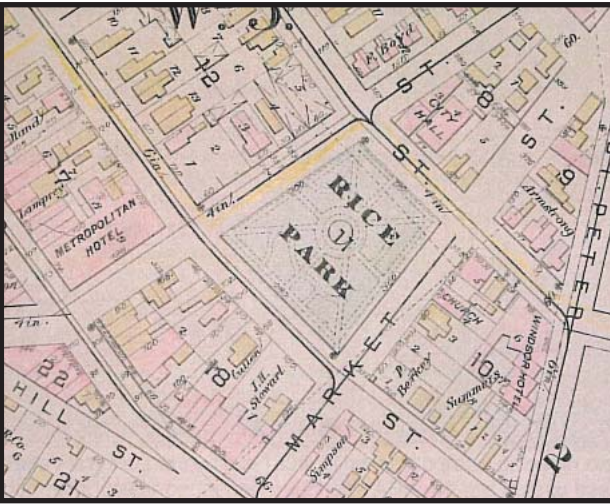
Add elements to add positive energy, engage visitors and entice them to walk through the park

- Add interactive and unique lighting, interpretive elements, and beautiful gardens

TIMELINE OF DESIGN HISTORY



1849 Park dedicated to the City. Improvements were minimal and amounted to lawn mowing. Trees were eventually planted in 1860. 1867 Parks Committee formed.



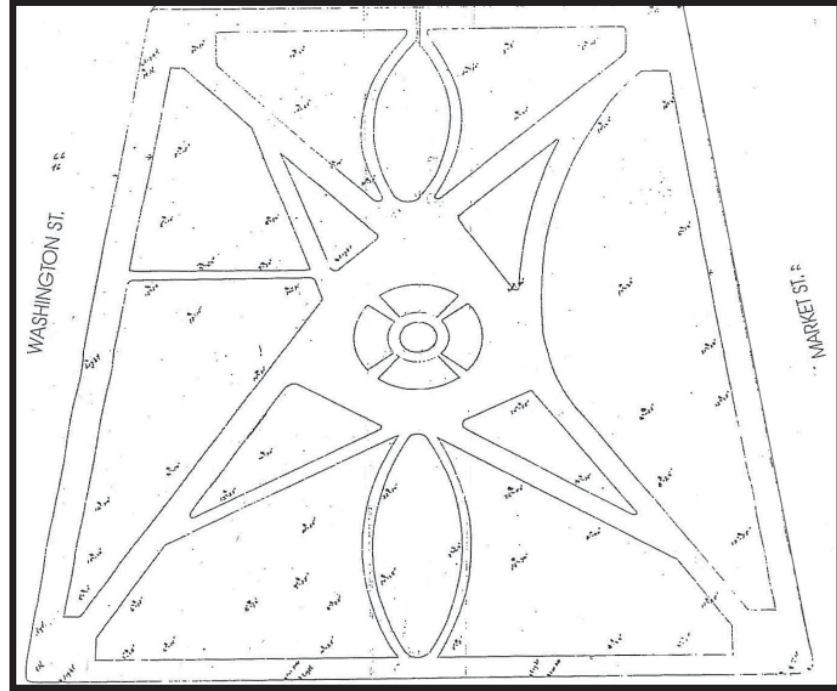
1849 A 'Public Square' was dedicated to the City as part of the Rice/Irvine addition filed by Henry Rice and John Irvine. Later named Rice Park. No real improvements were made to the park other than annual grass mowing, until 1860 when the first trees were planted.



Cast iron statue in Rice Park. Note the 'rustic' bronze benches.



1910 - Construction of the Saint Paul Hotel



1898 Complete Park remodel. -Coinciding with completion of the Landmark Center. Fewer paths, bandshell and original fountain removed. 1910 Additional land acquired for the park - Later used for the construction of the Library .

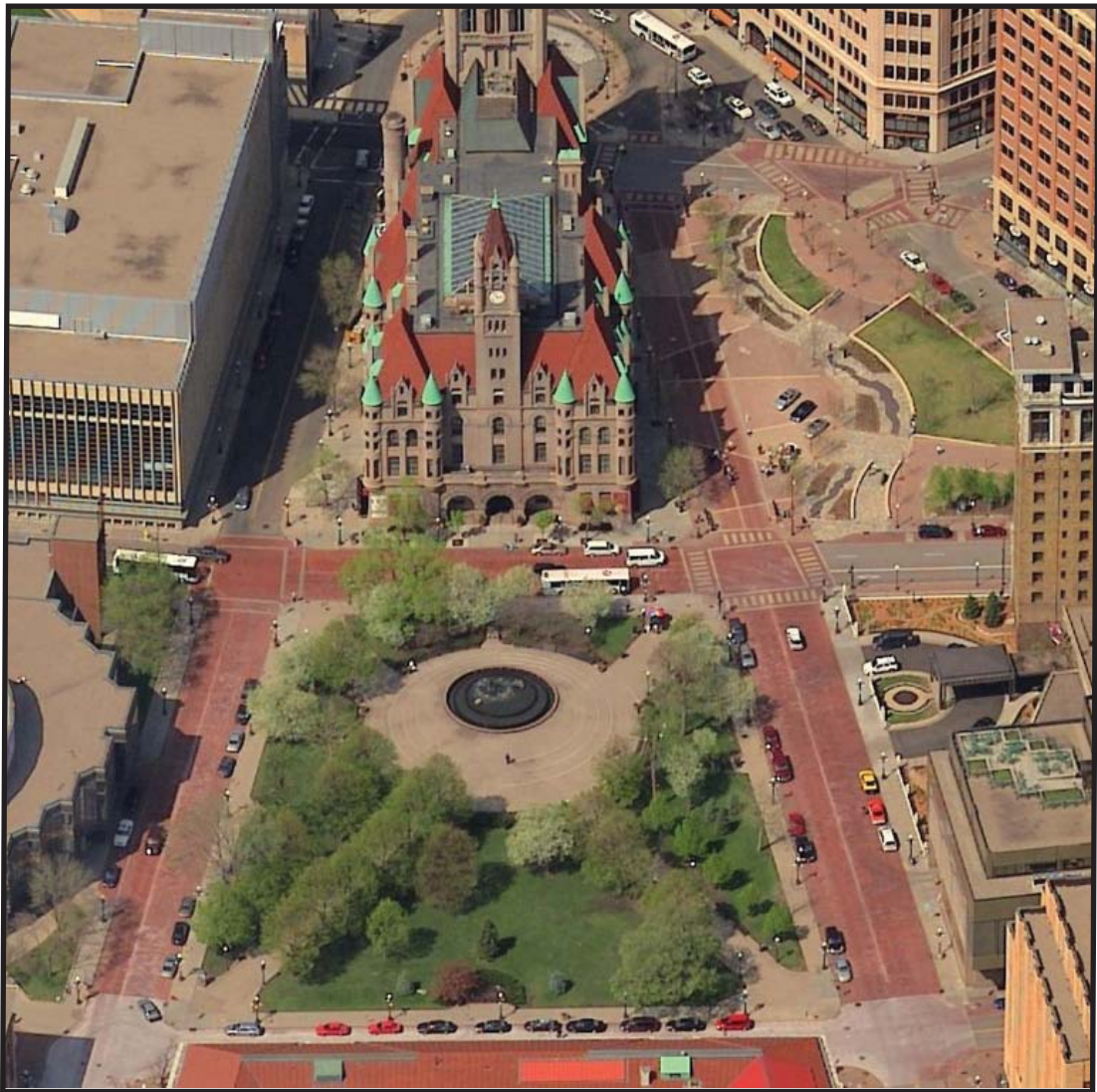
1917 - Construction of Saint Paul Public Library (George Latimer Central Library)



1960 Park renovation planning began. 1964-1965 Hammel Green Abrahamson design. Plan retained the existing circulation pattern. Circular steps (shown), fountain and sculpture added.



2000 Steps removed for ADA accessibility. Fountain rebuilt, pumps replaced, electrical service upgrade to provide for increased capacity. New circular plaza benches path benches and concrete planters added.



2000-present; Changes since renovation: Charles Shultz 'Peanuts' sculptures installed. Permanent Christmas tree stand installed. Electric service added with new electrical receptacles and new wiring for holiday lights.

1849

1872

1872

1883

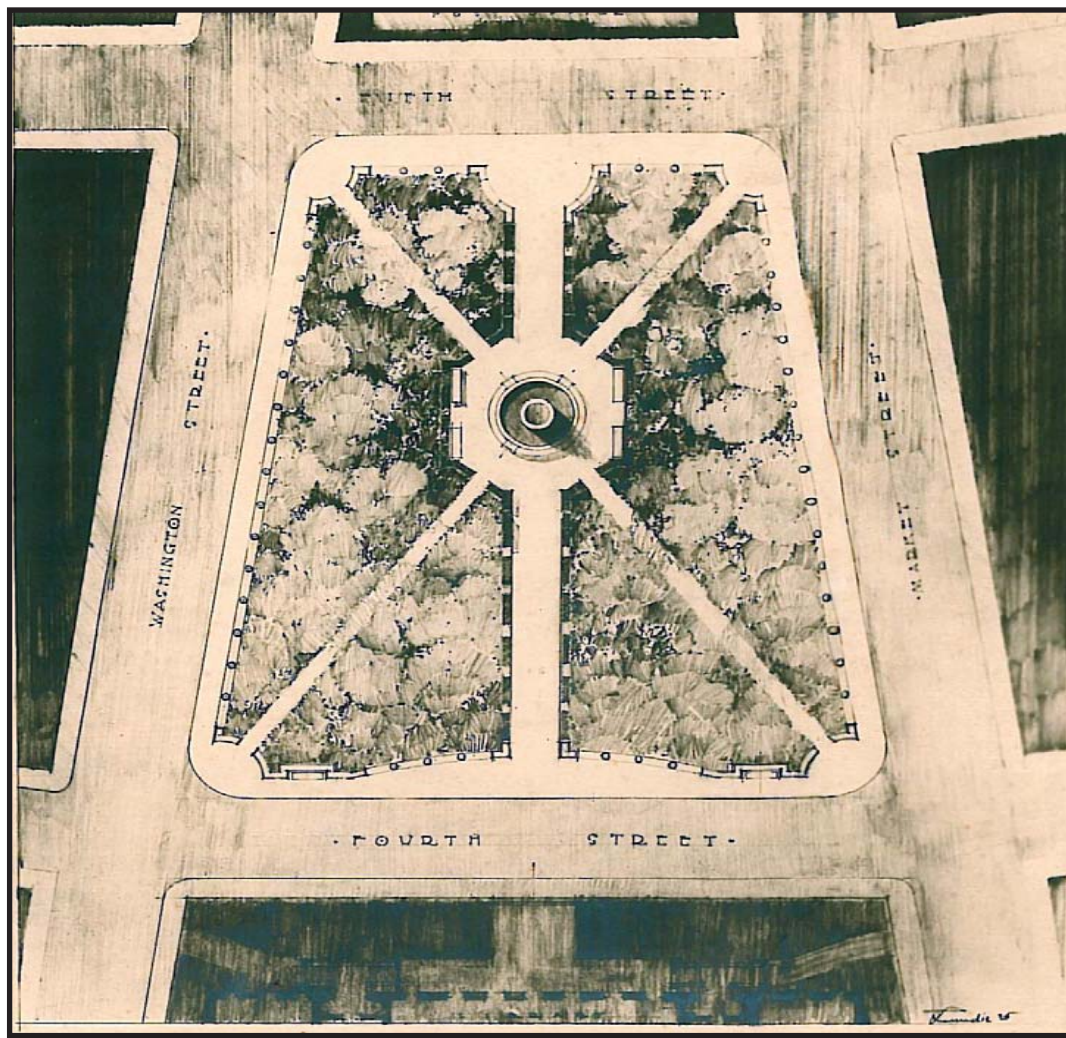
1898

1920-1950

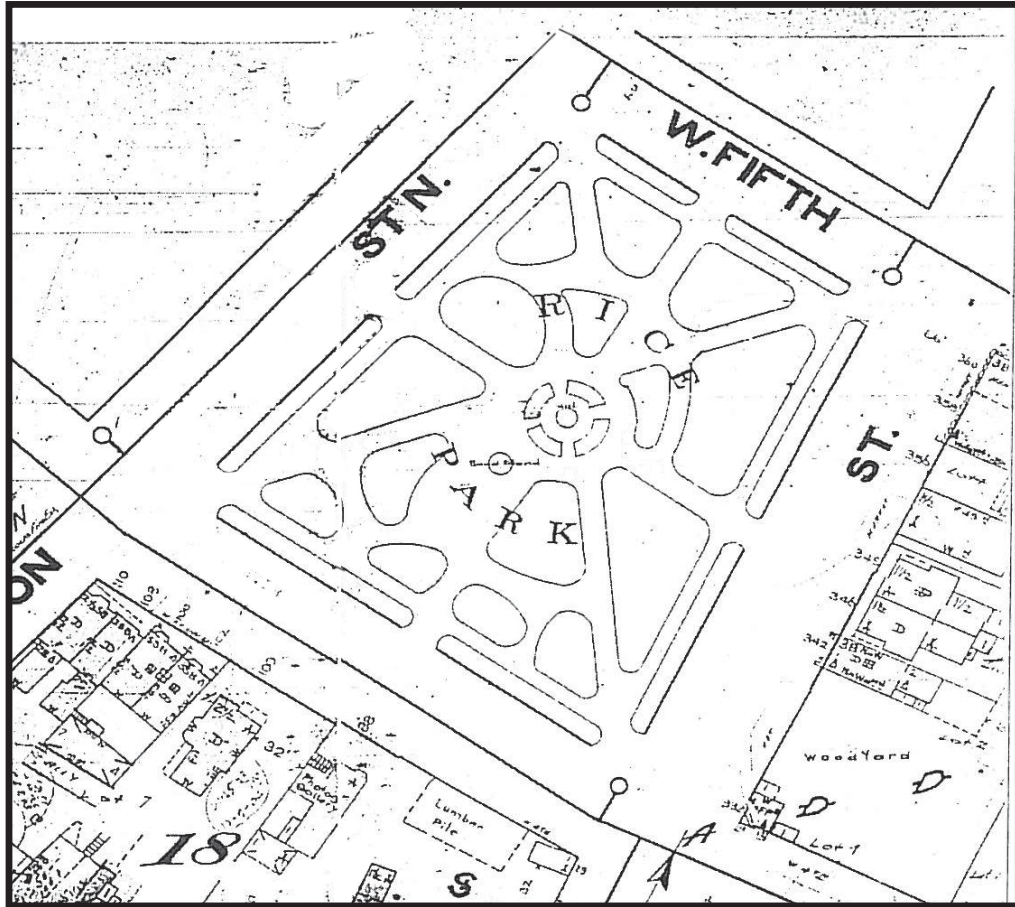
1964

1980

2000



1872 Cast iron ornamental fountain (\$965) and bandstand installed.



1883 Four feet of soil added to the park. Planters and lights added. Plat drawing above shows 1891 Park layout plan.

1894-1901 Construction of Federal Court Building- Landmark Center



1925 Fountain removed. 1927 Plan uses an X pattern of bituminous walks corner to corner.

1930 - 1950 Park maintenance and the general condition of the park declined.



1980 Renovation; Elm and Ash trees replaced with Lindens. Concrete walk replaced, railing, lighting and other landscape planting added.

1985 Construction of the Ordney

“Rice Park’s splendor stems from its simplicity and permanence...It provides a visual and physical respite from the impressive collection of buildings and busy street life that surround it. Having undergone several transformations during its 162 years, the park illustrates how planning, with the support of dedicated citizens, can ensure the longevity and vitality of a community treasure” From the American Planning Association, 2011

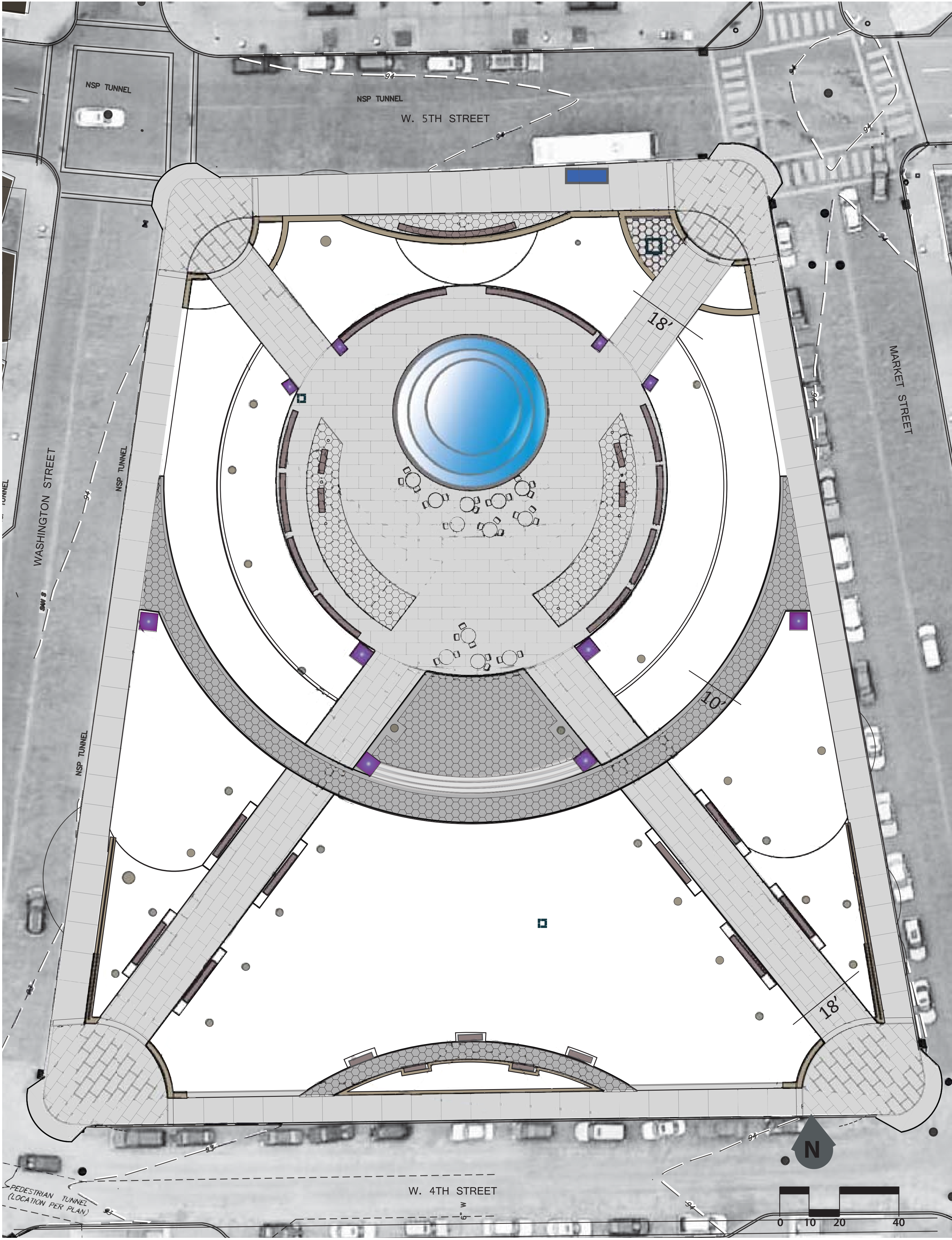
RICE PARK REVITALIZATION CONCEPT PLAN

The concept plan activates Rice Park by adding a central space for activities and gatherings. The park is visually open and offers a new experience to Rice park with a new pathway, colorful display gardens, flexible seating options, and engaging light features.

- Bumpouts at all 4 corners for traffic calming and pedestrian crossings-
(pending further discussion with Public Works and Historic Preservation Specialist)
 - Reconstructed seatwall
 - Bus stop
 - Garden area is expanded
 - Fitzgerald sculpture remains in place
 - Entry space at all four corners reconfigured and defined with new seatwalls
 - Perimeter seating offset into garden area
 - New drinking fountain
 - Existing fountain remains
 - New trees add shade to the open plaza
 - Moveable chairs and tables offer flexible seating options
 - Existing Benches remain
 - Yew plantings are bordered by colorful flower displays around the perimeter of plaza
 - New secondary pathway (10') from Market and Washington
 - Central space can be programmed for concerts, weddings, small gatherings, performances
 - Open lawn area with new irrigation and reinforced turf edge
 - Existing linden allees
 - Holiday tree location
 - Paving is reduced by narrowing diagonal pathways
 - Raised garden bed for flower display by the Saint Paul Garden Club
- Other elements:
- Charles Schulz Peanuts sculptures will be relocated in the southeast perennial bed
 - Kiosks at entry corners will remain at corners
 - Signage plaques and historic monuments will be integrated into the entrance walls and entry garden beds
 - Existing utility boxes and fountain pump are proposed to be relocated in an underground vault



PAVING TYPES



hexagonal paving - stamped & asphalt

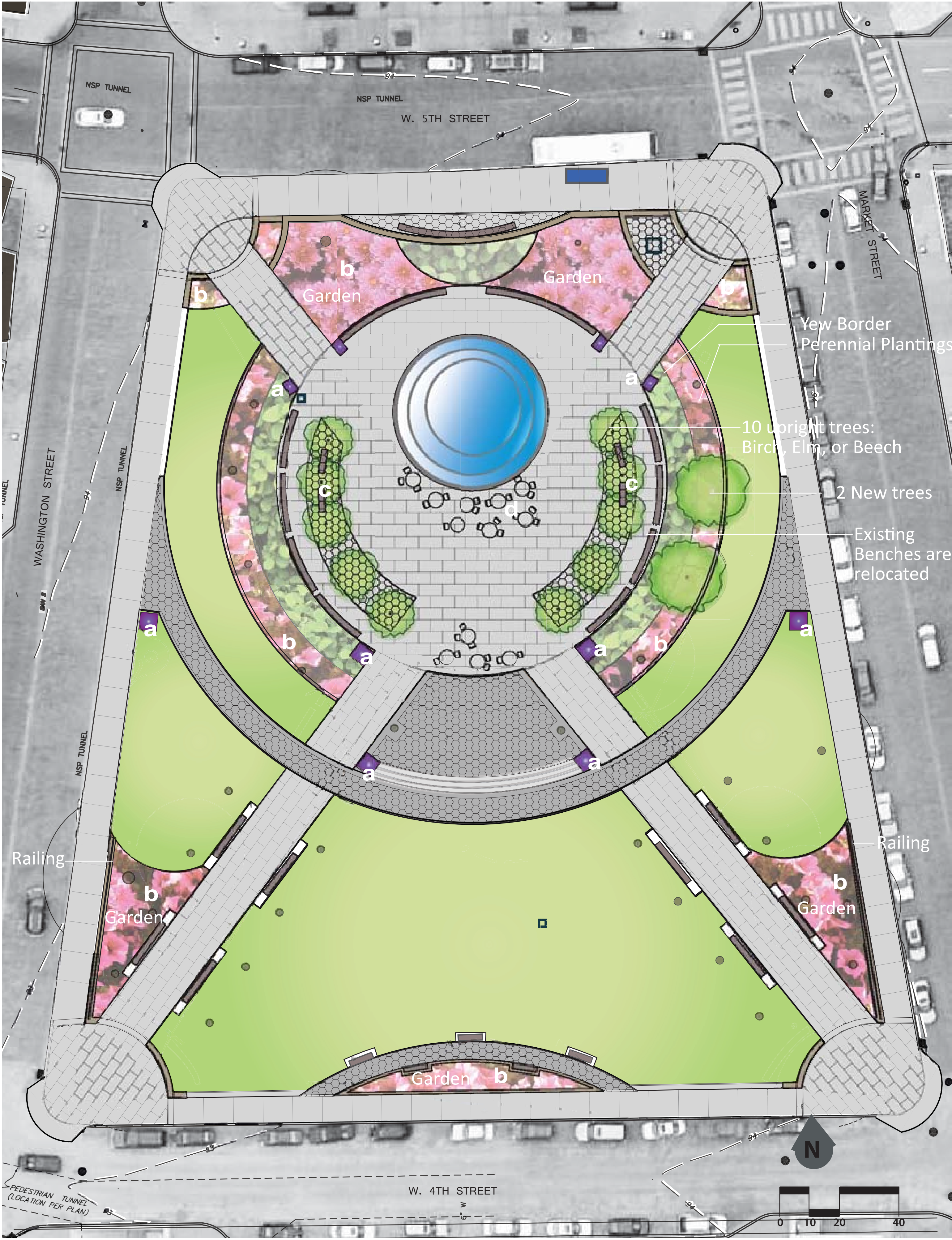


running bond granite & concrete

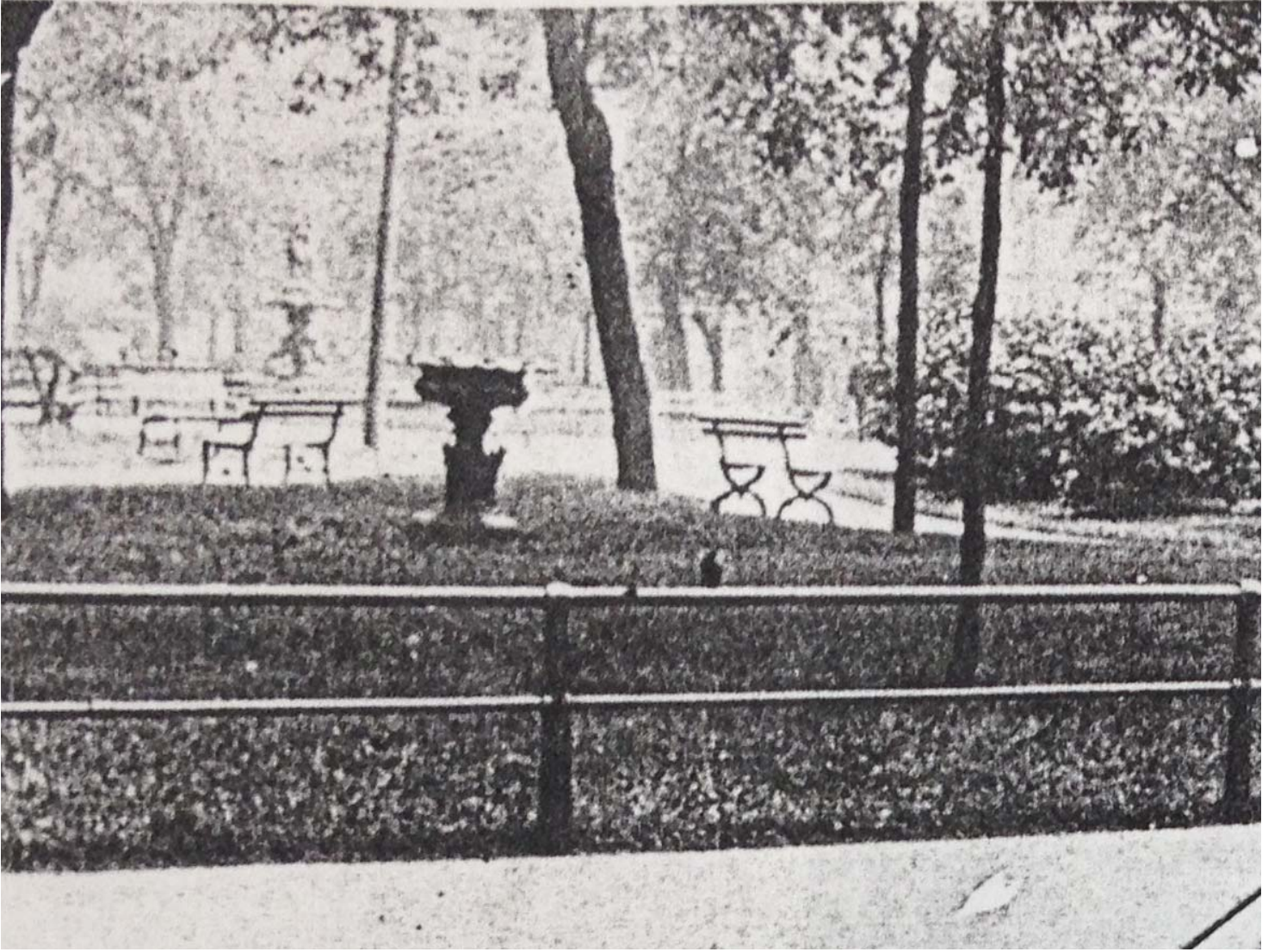


- KEY
- PROPOSED HEXAGONAL PATTERN PAVERS OR STAMPED CONCRETE
 - PROPOSED STAMPED CONCRETE - RUNNING BOND PATTERN
 - SIDEWALK

PLANTING AND FURNISHINGS



historic precedents

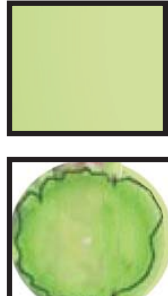


KEY



PERENNIAL PLANTING WITH LOW GROWING SHRUBS

HEDGE OF YEWS OR OTHER EVERGREEN SHRUB



LAWN



NEW TREE

LIGHTING - FIXTURES

existing globe lighting

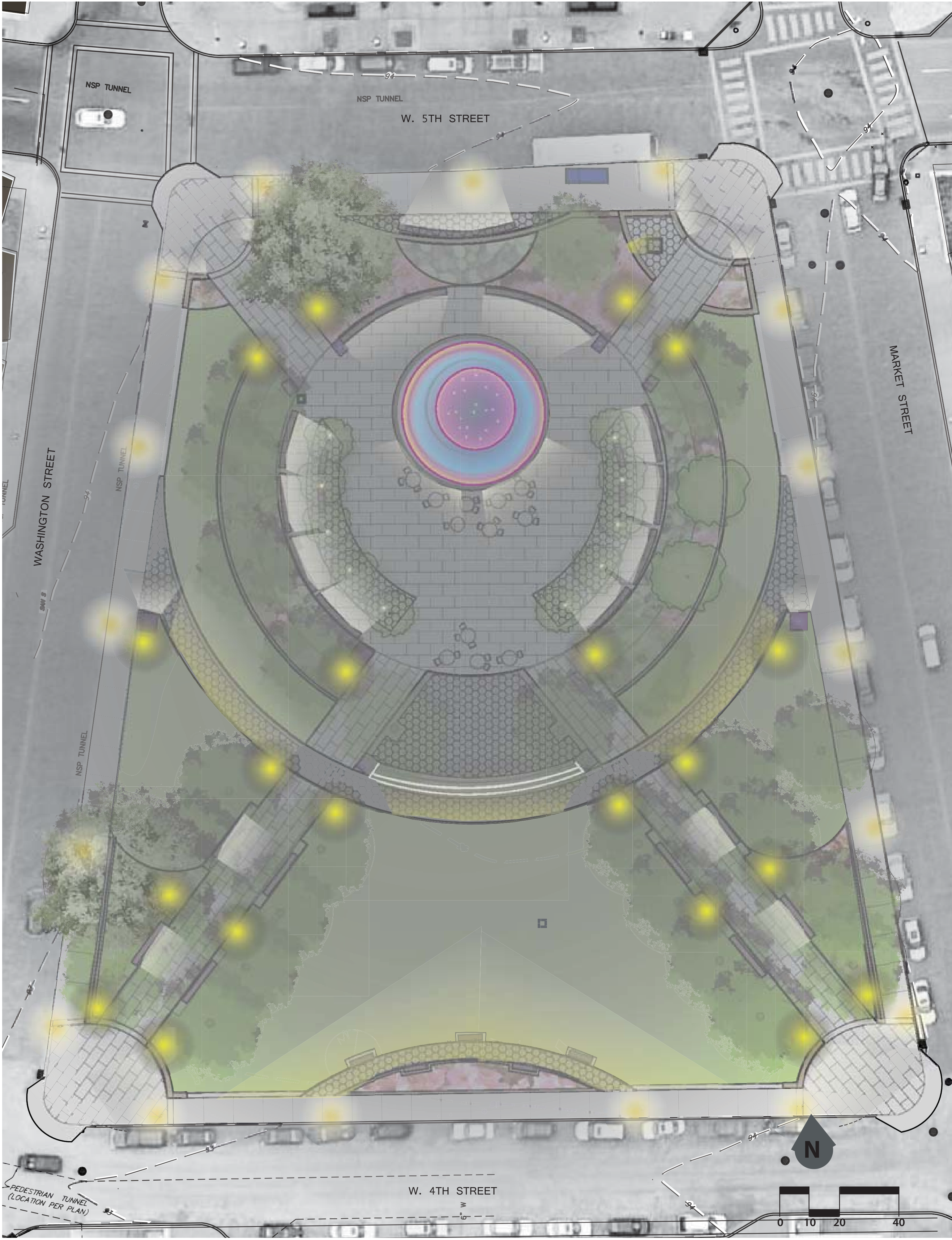


proposed path lighting

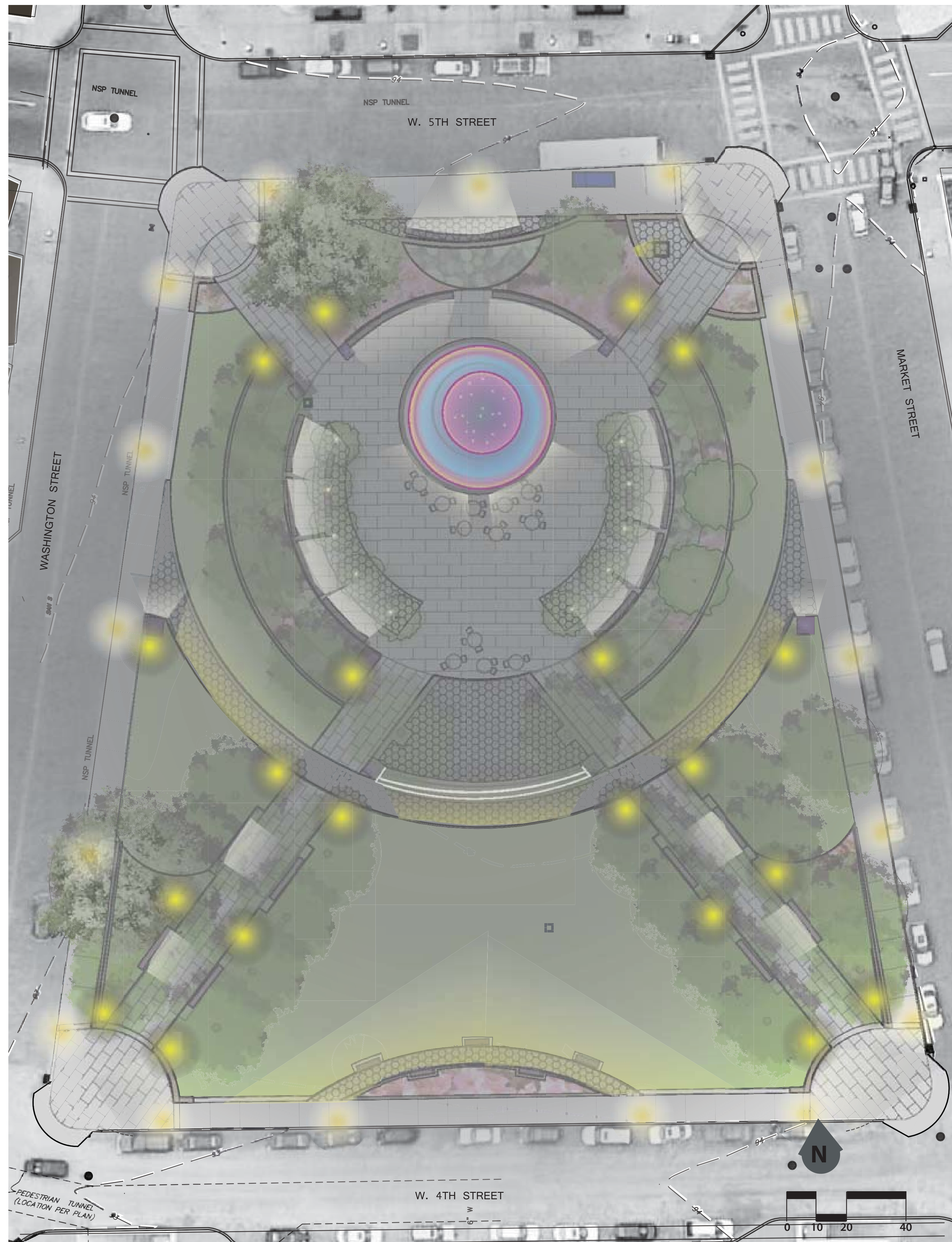


- KEY
- GLOBE LIGHT - pathway
 - GLOBE LIGHT - street light

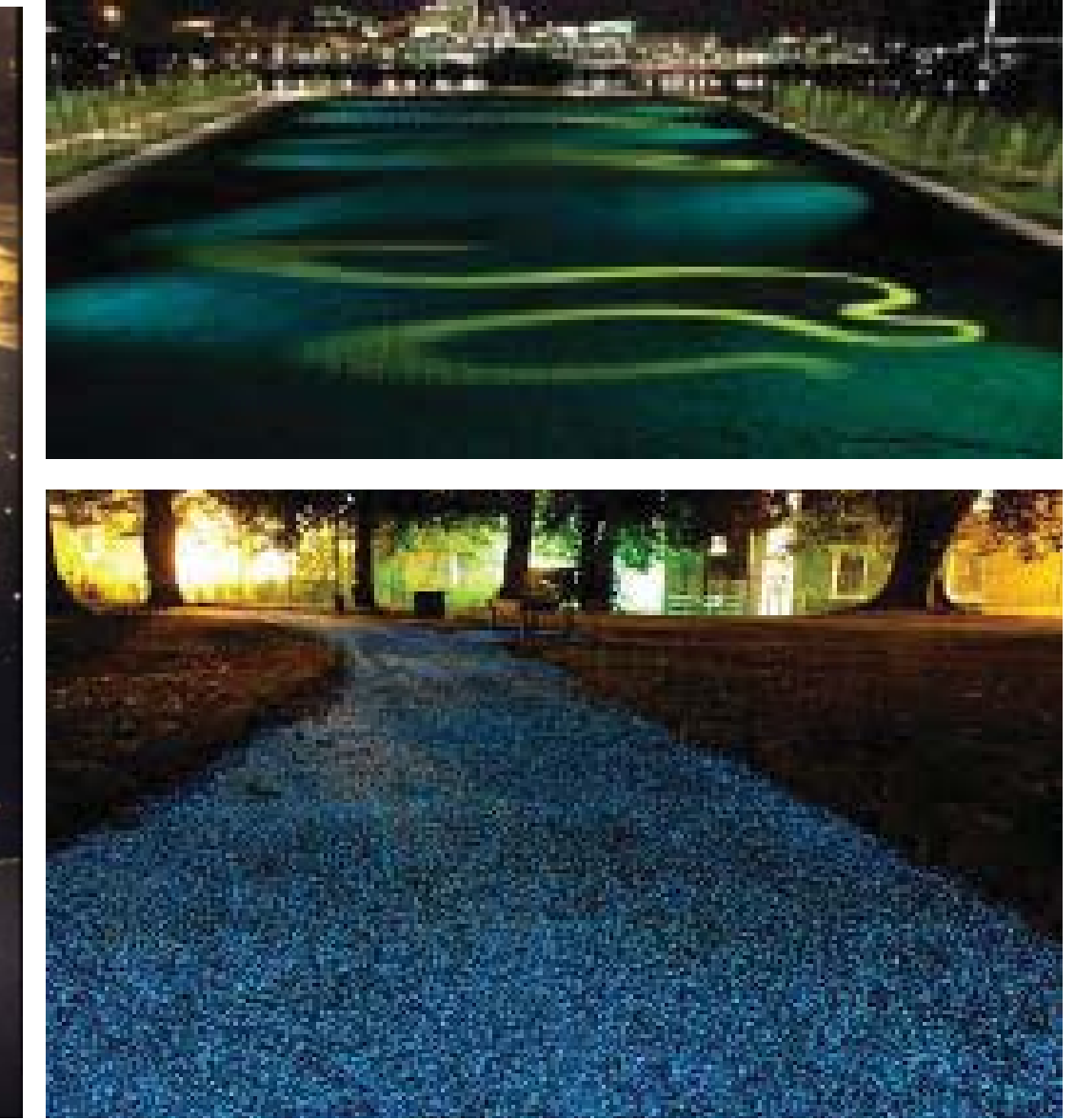
CONCEPT: Bollards, bench lighting, and path lighting will add light to pathways in order to give a 'washed' effect to horizontal surfaces. Lighting will be integrated into columns and seatwalls. Globe fixtures relate to the historic district and will be relocated as shown in the concept plant.



LIGHTING ART



path lighting options

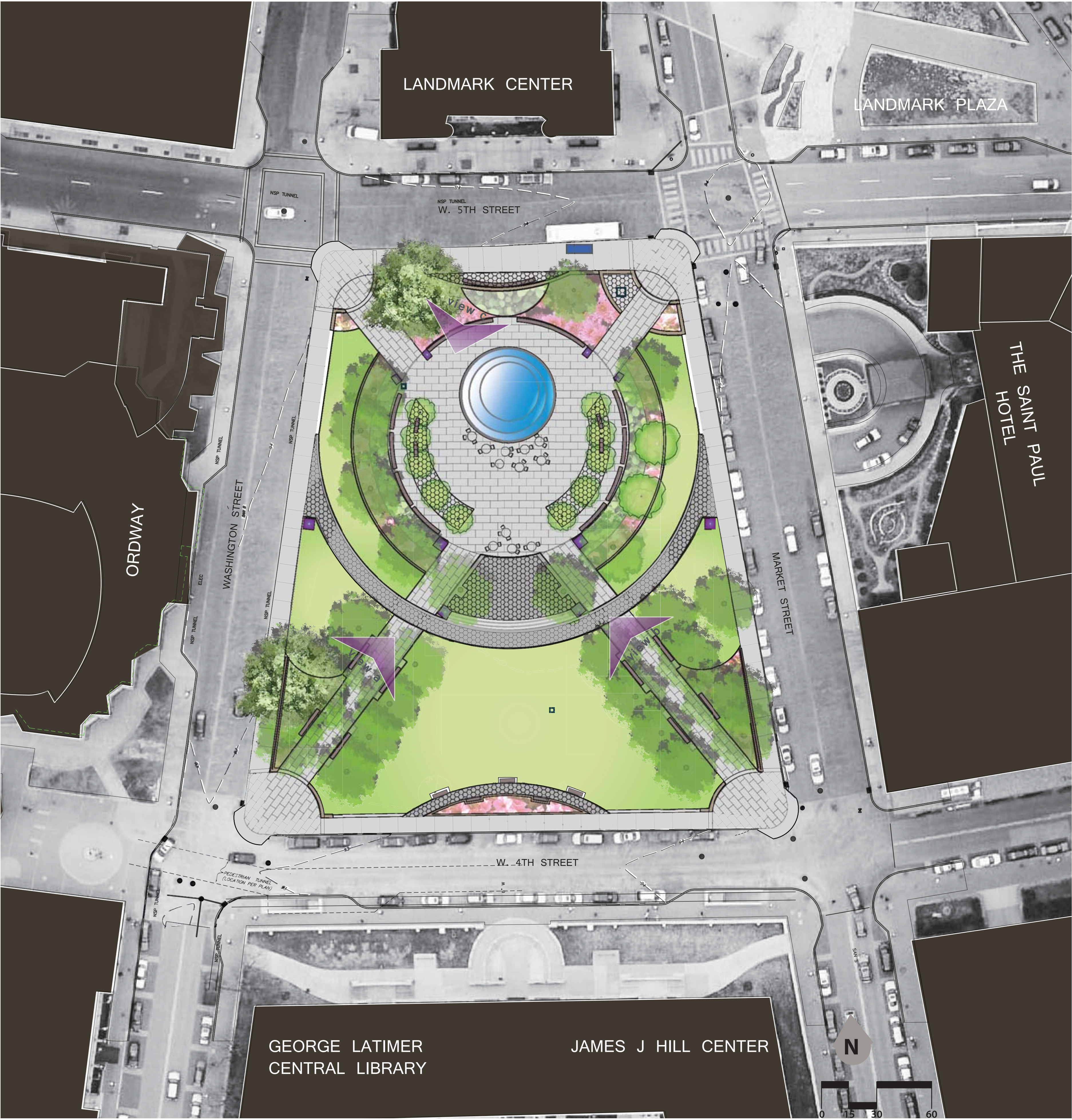


interactive lighting



CONCEPT: Lighting will engage park visitors at night with interactive new LED light fixtures in the fountain, interactive path lights, and lighting for trees in order to create a welcoming space in Rice Park. Images above show examples of interactive light features that could be used at Rice Park.

PERSPECTIVE GRAPHICS



view a - view from southwest diagonal path into the central gathering space

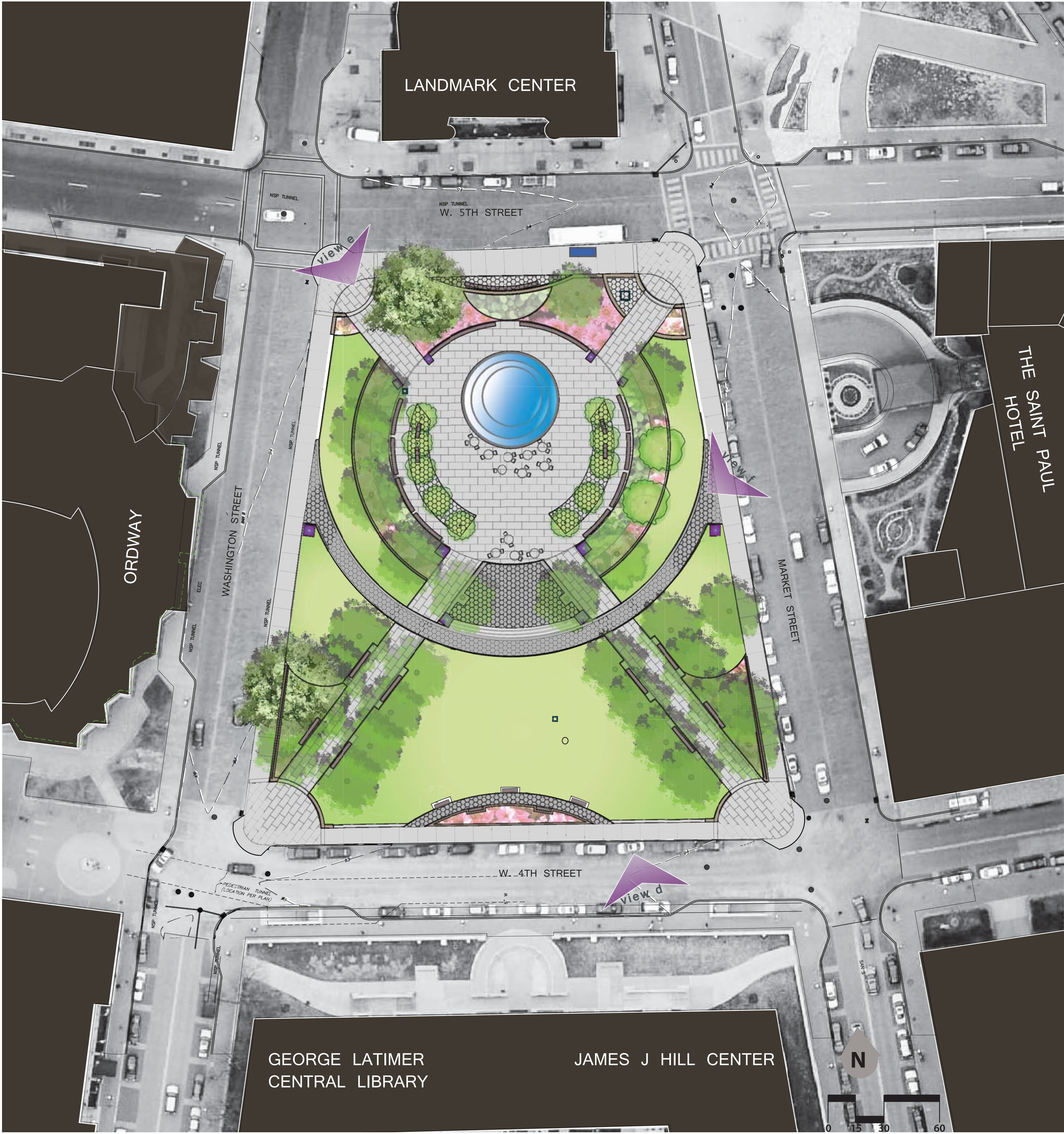


view b - view from southeast diagonal path towards the central gathering space



view c - view through north gardens towards the central gathering space

PERSPECTIVE GRAPHICS



view d - view of south lawn with reconfigured gardens and an open view to Landmark Center



view e - view from 5th Street and Washington towards interior of Rice Park



view f - view from Market Street into Rice Park