

MARYDALE PARK | SEPAK TAKRAW/KATO

WELCOME!



COMMUNITY MEETING

AGENDA

April 18, 2017

5:30-7:00pm

St Bernard Church, 1160 N Woodbridge St.

GOAL: To inform the community about future sepak takraw courts, locations, and schedule.

5:30 Welcome and Staff Introductions

5:35 Presentation

- **What is Sepak Takraw/ Kato**
- **Process**
- **Existing Conditions/ Site Analysis**
- **Plans**
- **Schedule**

6:00-6:30 Discussion

- **Format: Name, Affiliation, Comment**

6:30 Next Steps

WHAT IS SEPAK TAKRAW/KATO?

Sepak Takraw or Kato is a traditional Southeast Asian sport that mostly resembles volleyball but requires players to use only their feet, knees, head, and chest, much like soccer. The ball is roughly 5 1/2" in diameter and woven rattan (traditionally) or synthetic rubber. Typically, two teams of three players each, play on a 20' x 44' court separated by a 5' high net. An official match is won by the best of 3 games each played to 21 points.



MARYDALE PARK | SEPAK TAKRAW/KATO

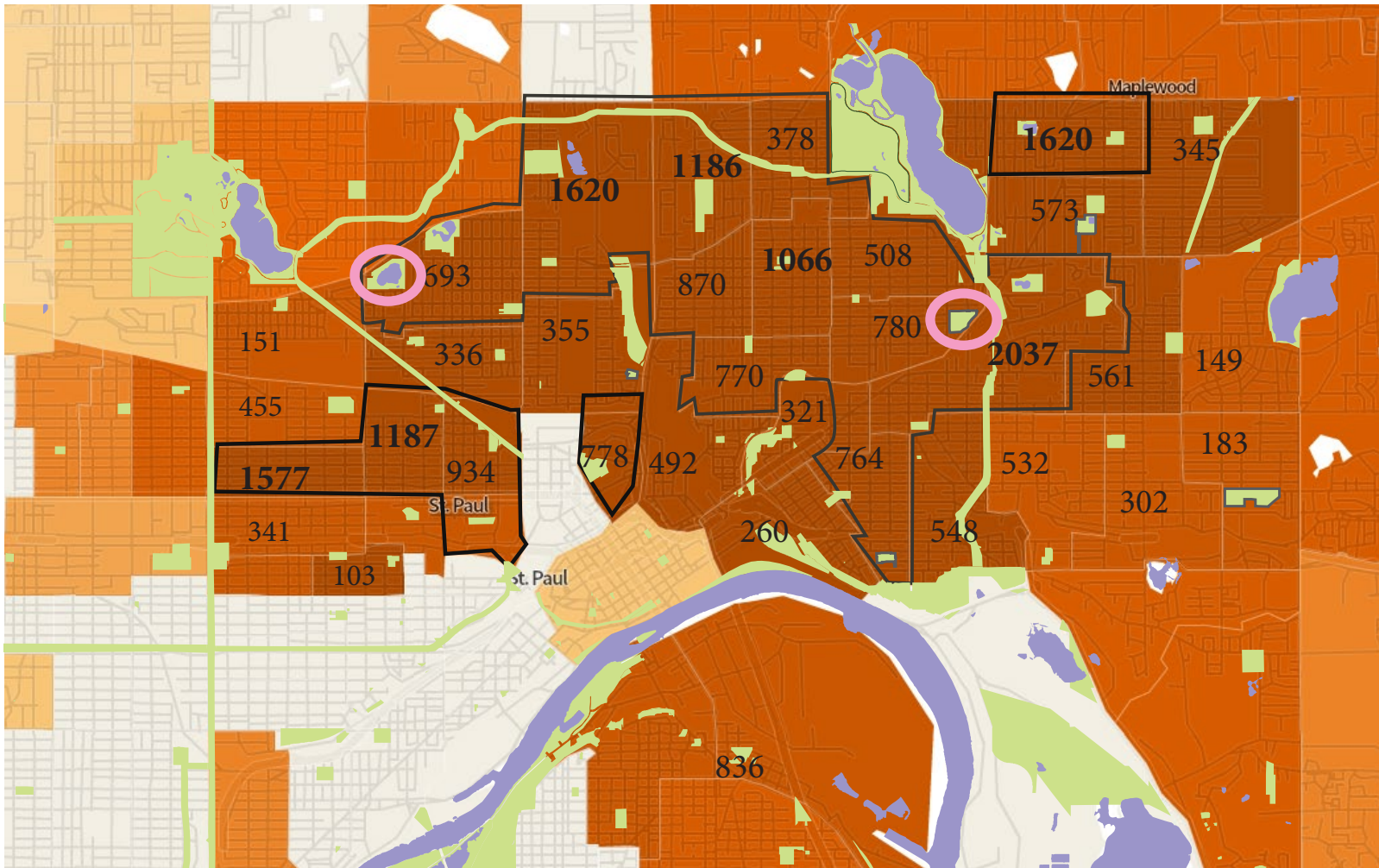
PROCESS

PARTNERSHIPS

Sepak Takraw of USA, Inc.
Minnesota Super Bowl Host Committee

SITE SELECTION

Demographics (Hmong & Karen)
Proximity to active recreation (Play area, courts, fields)
Available space
Restroom



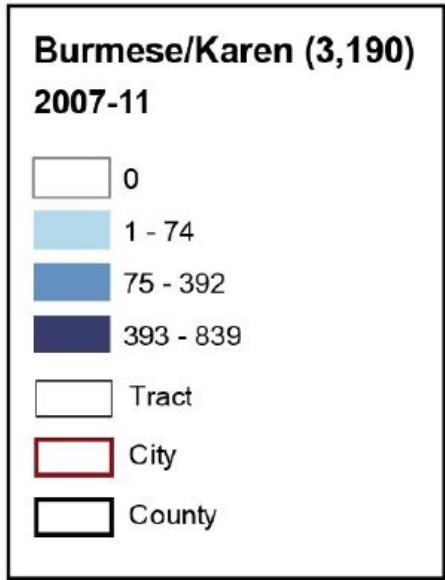
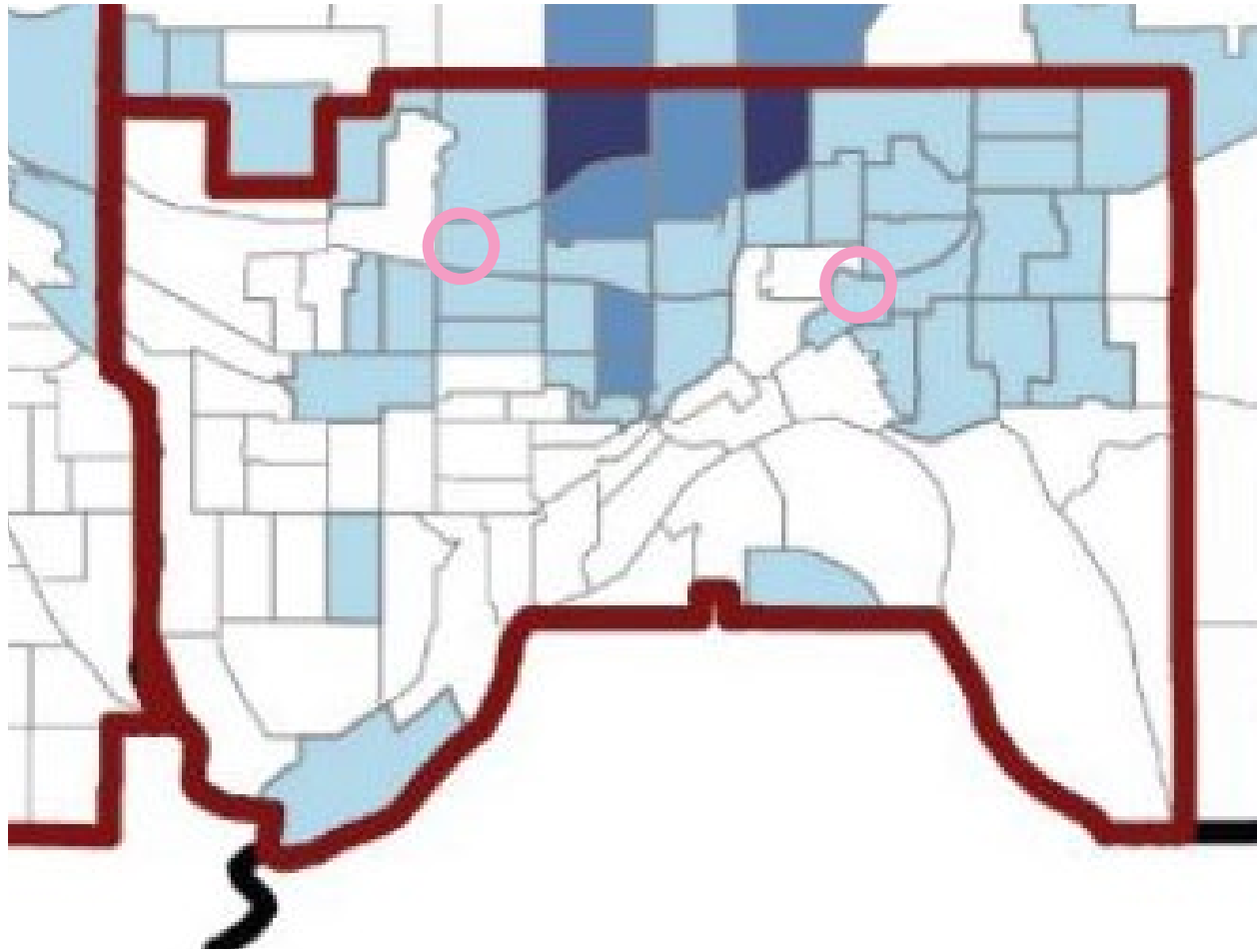
LEGEND

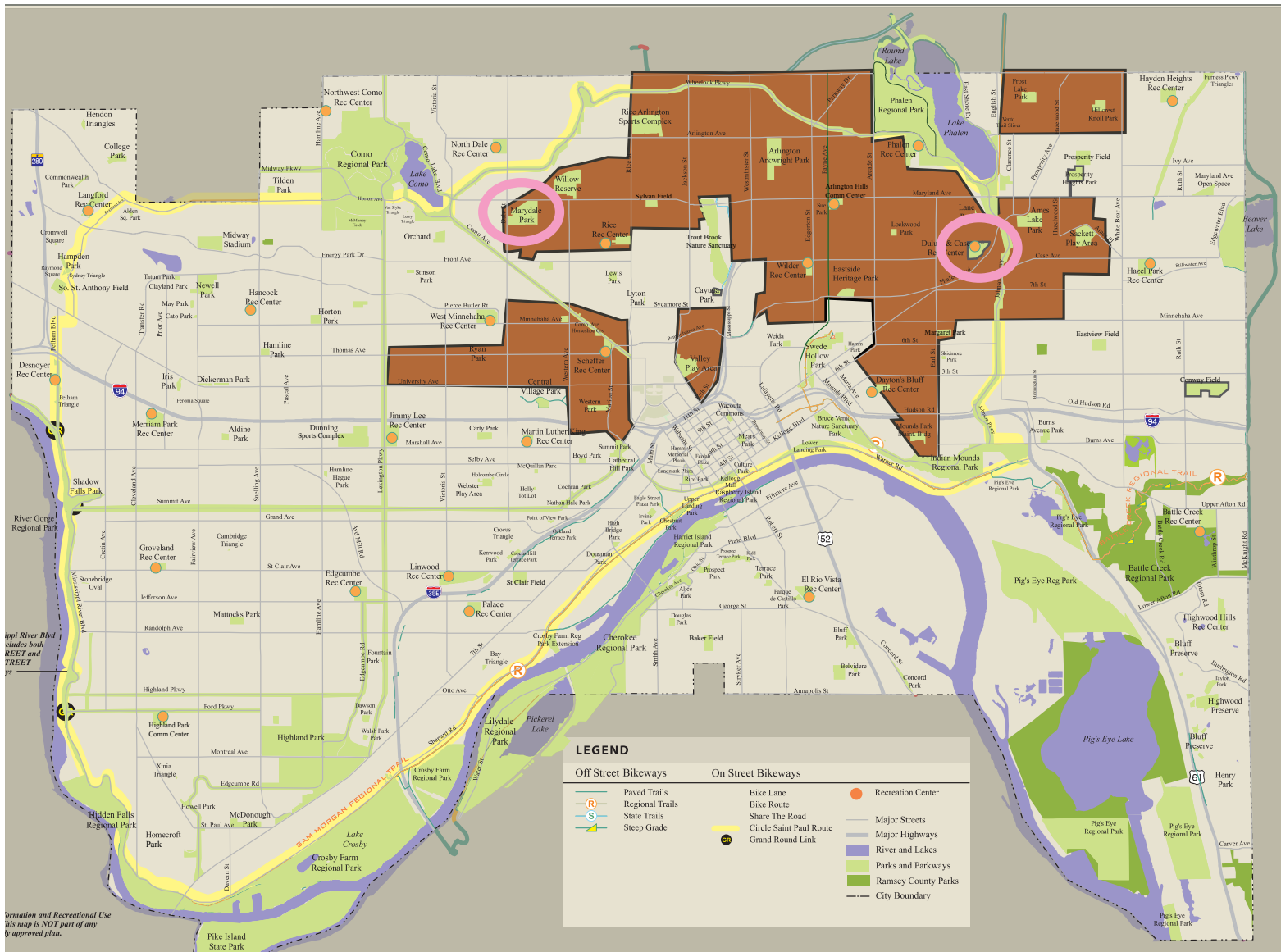
- 80%-90% OF HMONG POPULATION
- HIGHEST HMONG POPULATION AREAS
- SAINT PAUL PARKS SYSTEM
- 0000** HMONG POPULATION PER CENSUS TRACT
- PROPOSED LOCATIONS

The neighborhoods in St. Paul with the highest concentration of Hmong residents are located between District 6, 5, 2 and 4.

DEMOGRAPHICS

St Paul Karen Demographics placeholder





The proposed Sepak Takraw/Kato courts are centrally located between those neighborhoods.

DEMOGRAPHICS

MARYDALE PARK | SEPAK TAKRAW/KATO

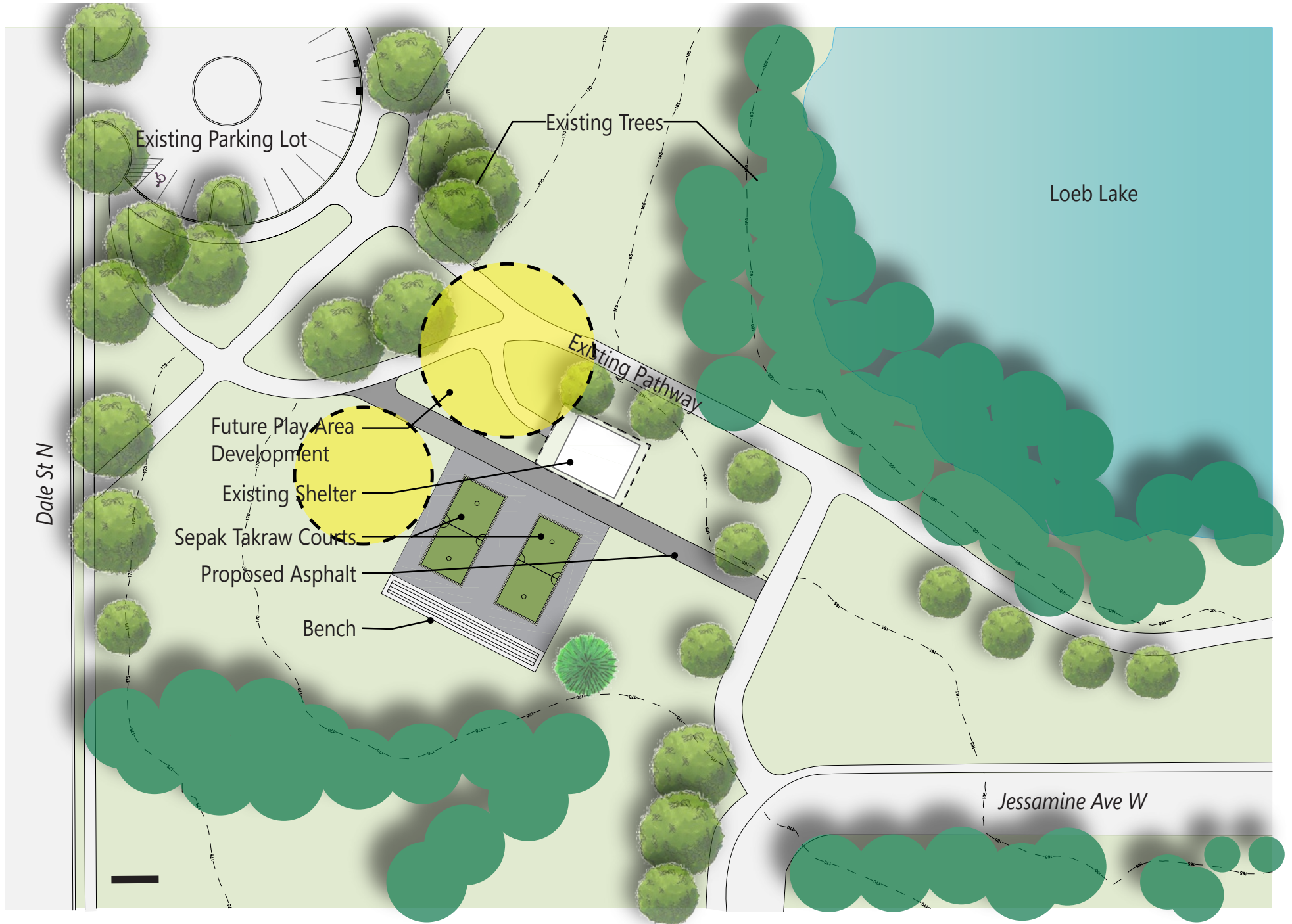
EXISTING CONDITIONS



EXISTING CONDITIONS

MARYDALE PARK | SEPAK TAKRAW/KATO

LAYOUT PLAN



MARYDALE SITE LAYOUT



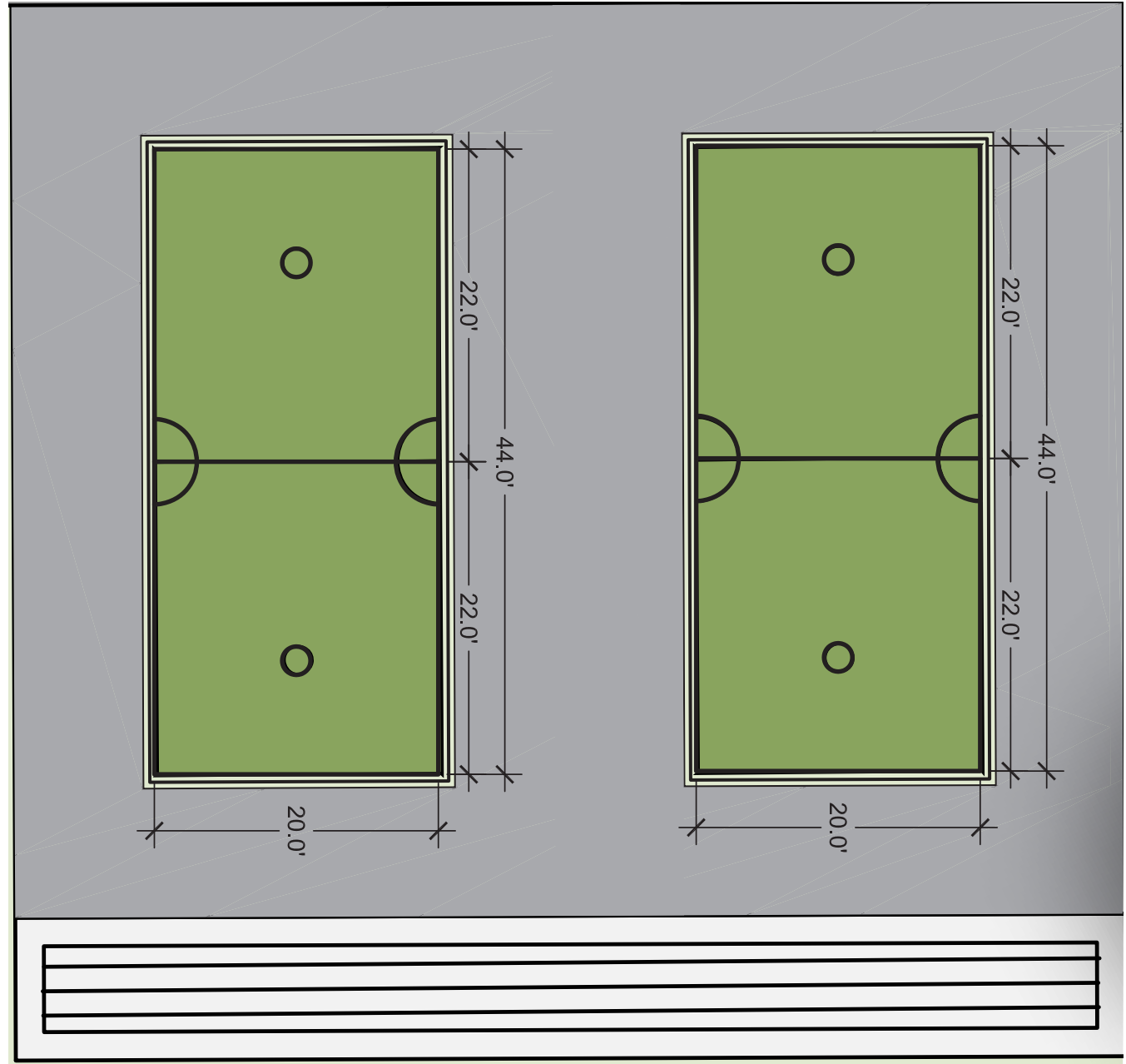
DULUTH & CASE SITE LAYOUT

BASE BID

- Two courts each site (4 Total)
- Asphalt Surface
- 5' Net
- 10' Buffer Minimum around courts

FUTURE PHASES/ ALTERNATE

- Artificial Turf
- Referee stands
- Audience Benches
- Practice Stands
- Additional Courts
- Fencing



MARYDALE PARK | SEPAK TAKRAW/KATO

NEXT STEPS

TENTATIVE SCHEDULE

April - May 2017	Construction Documents
June 2017	Bidding
July 2017	Award Contract
August - September 2017	Construction
September 10, 2017	Target Opening Date
September 23, 2017	Marydale Festival
Summer 2018	Marydale Play Area Construction

CONTACT

Brett Hussong
Project Manager
brett.hussong@ci.stpaul.mn.us
651-266-6420