

SYLVAN PARK IMPROVEMENTS



**Community Meeting #3
November 16, 2017**

6:30-8:00PM

Saint Paul Parks & Recreation

Saint Paul Parks and Recreation
DESIGN & CONSTRUCTION DIVISION



INTRODUCTION

Project Overview:

This project will include a multi-use synthetic turf fields that are designed to meet today's recreational needs. Improvements to the play area include replacement of equipment and surfacing for compliance to current CPSC and ADA Guidelines. Additional Site Improvements may include walks, benches and landscaping as necessary

Project Timeline

Summer/fall 2017:

- Community Outreach

Fall/Winter 2017:

- Design and Development

Spring 2018

- Construction

Fall 2018

- Project Completion

**CONSTRUCTION
BUDGET:
\$1,300,000**

Sylvan Park Project Website:

www.stpaul.gov/SylvanPlayArea-Field

SYLVAN PARK IMPROVEMENTS

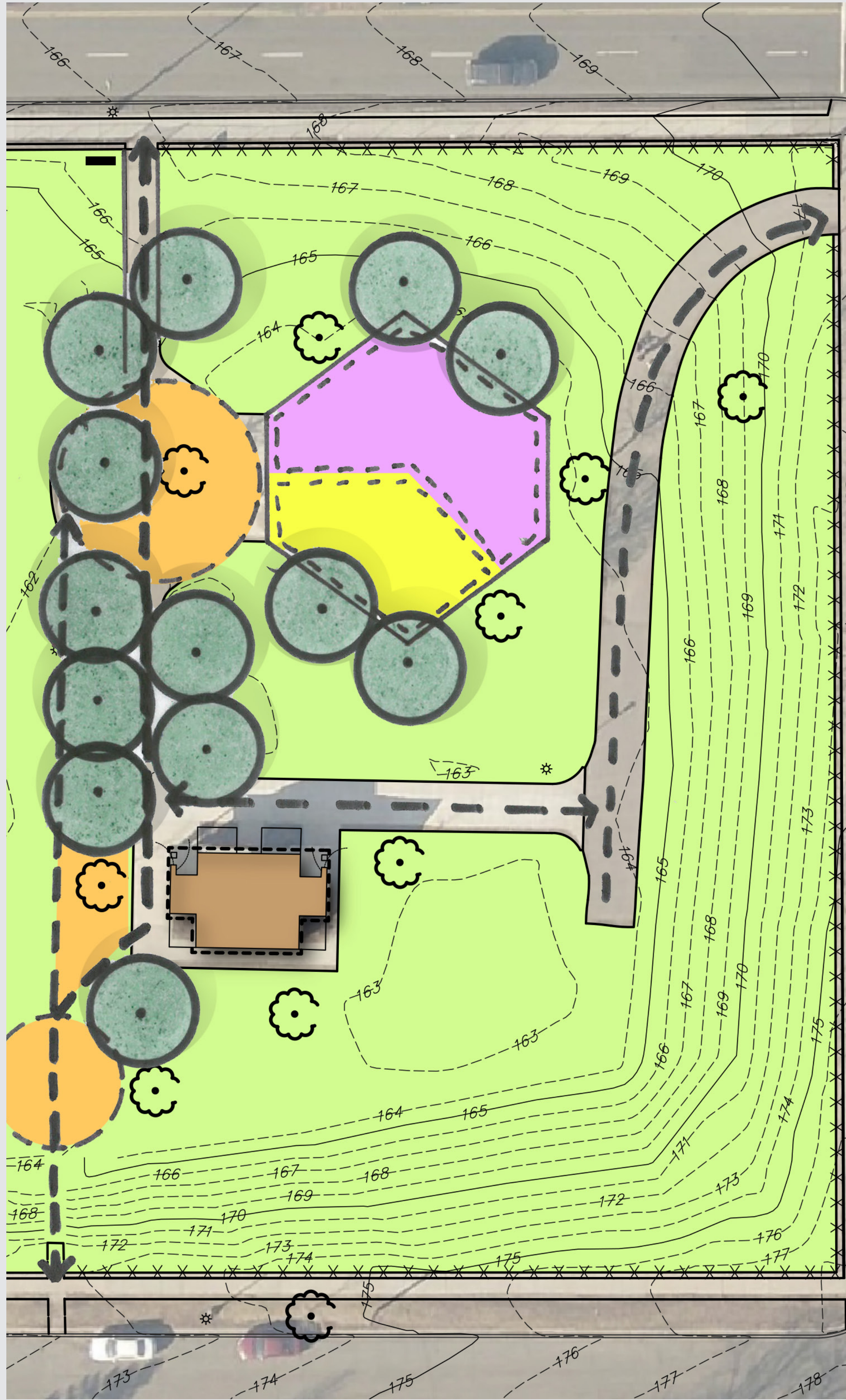
MEETING AGENDA

Agenda:

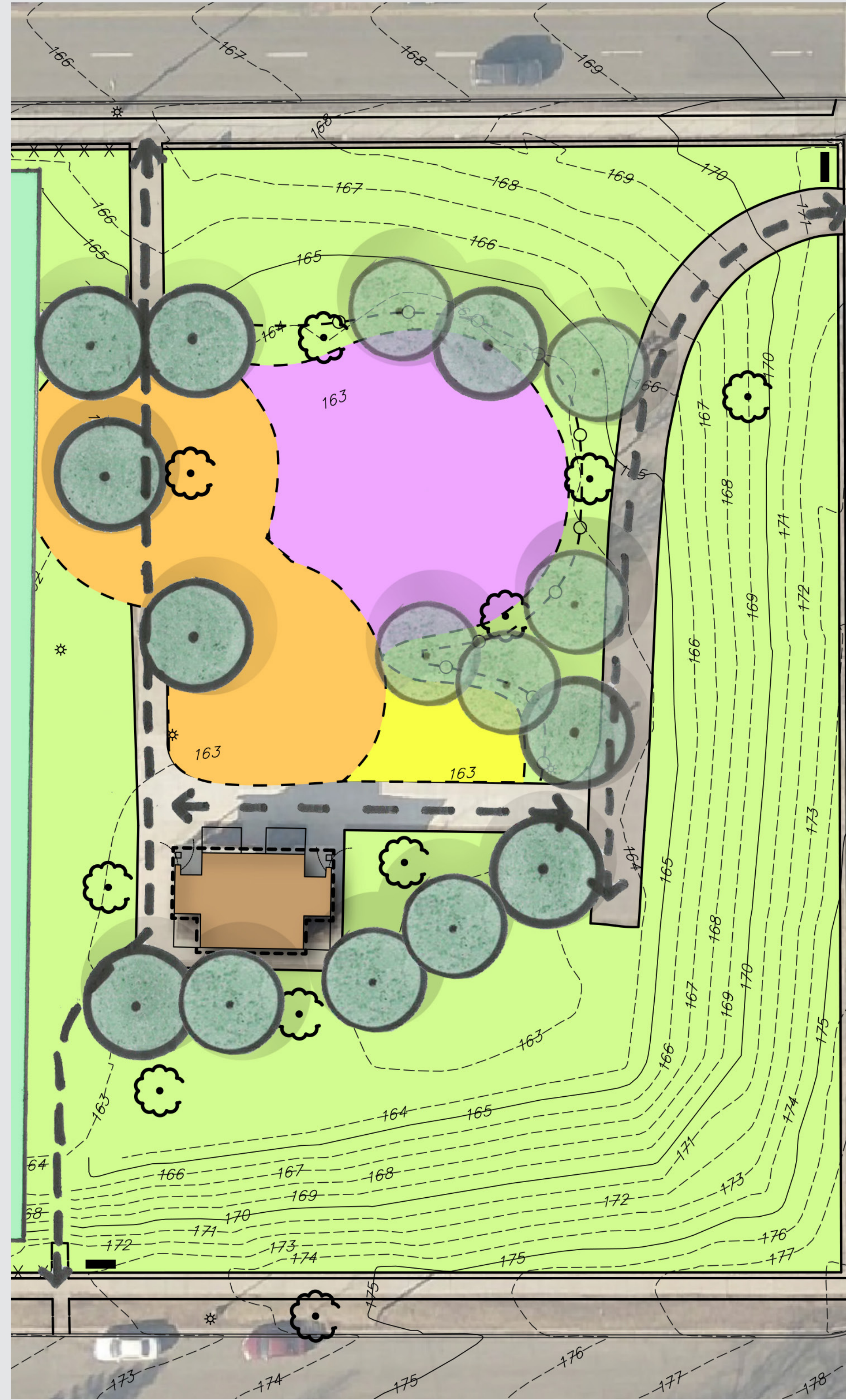
- Review Meeting #1 Concepts
- Recap Meeting #2 & Key Comments
- Present Meeting #3 Concept & Play Equipment Layout
- Public Art
- Group Discussion



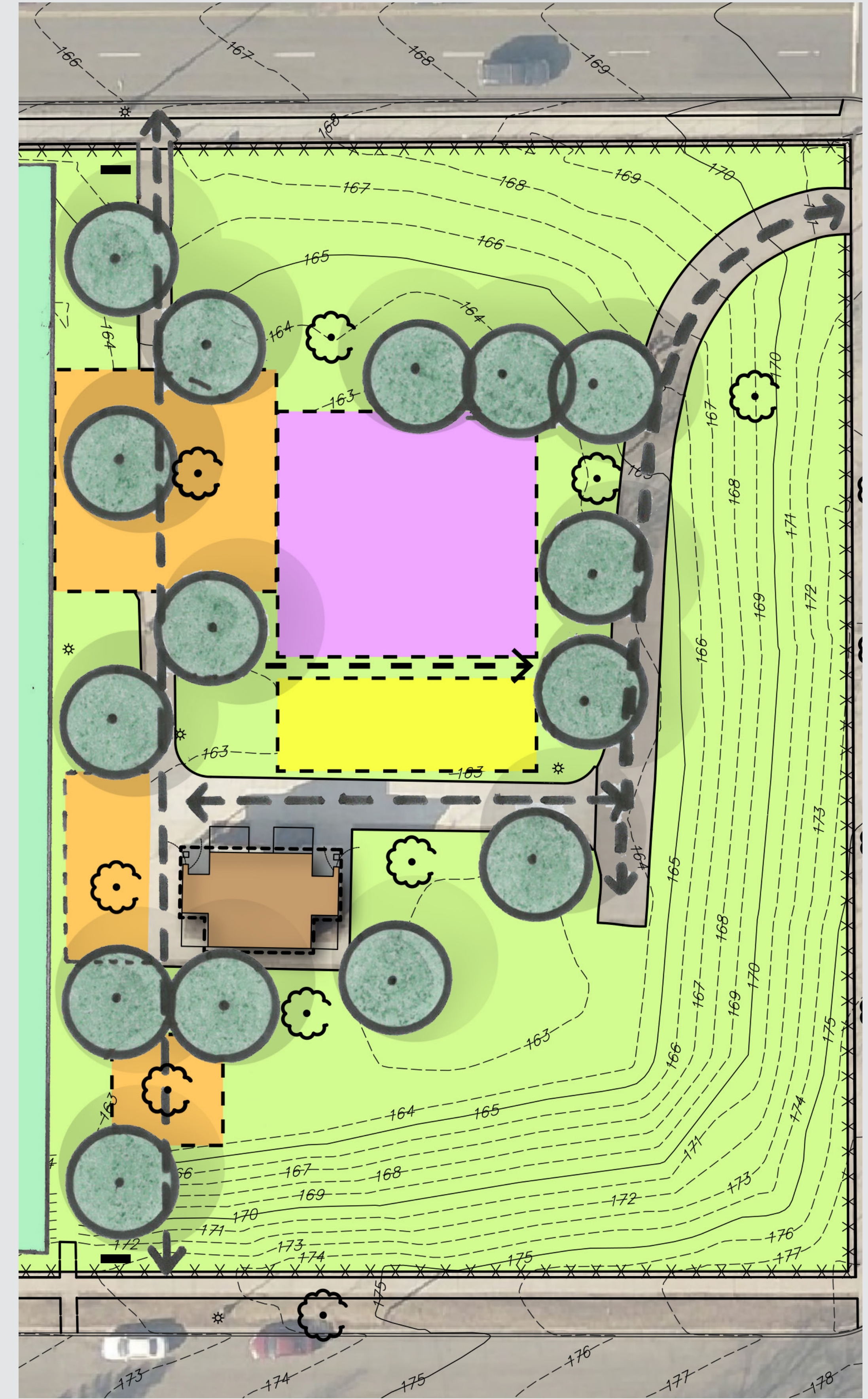
MEETING #1 CONCEPTS



Concept #1



Concept #2



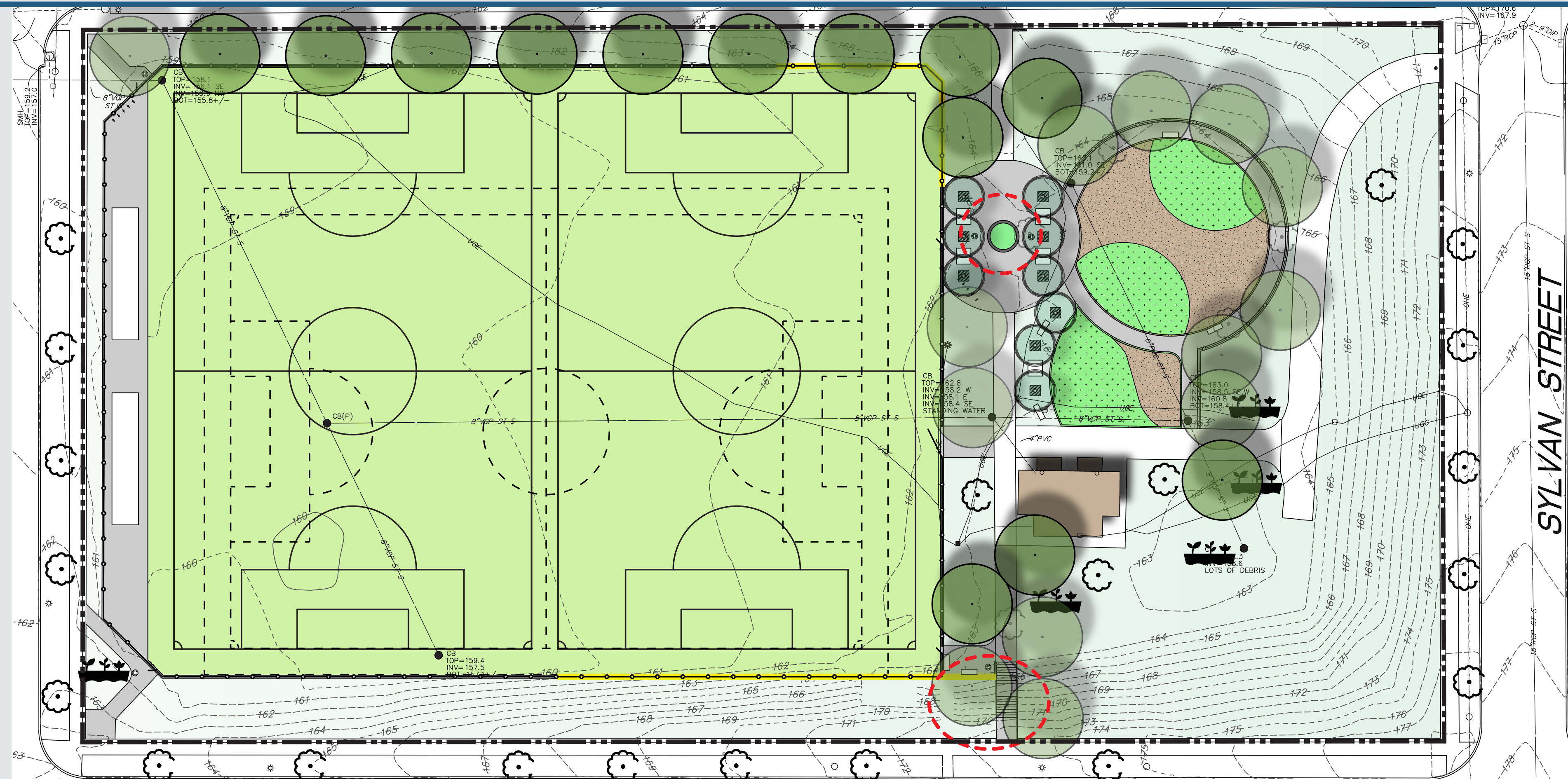
Concept #3

SYLVAN PARK IMPROVEMENTS

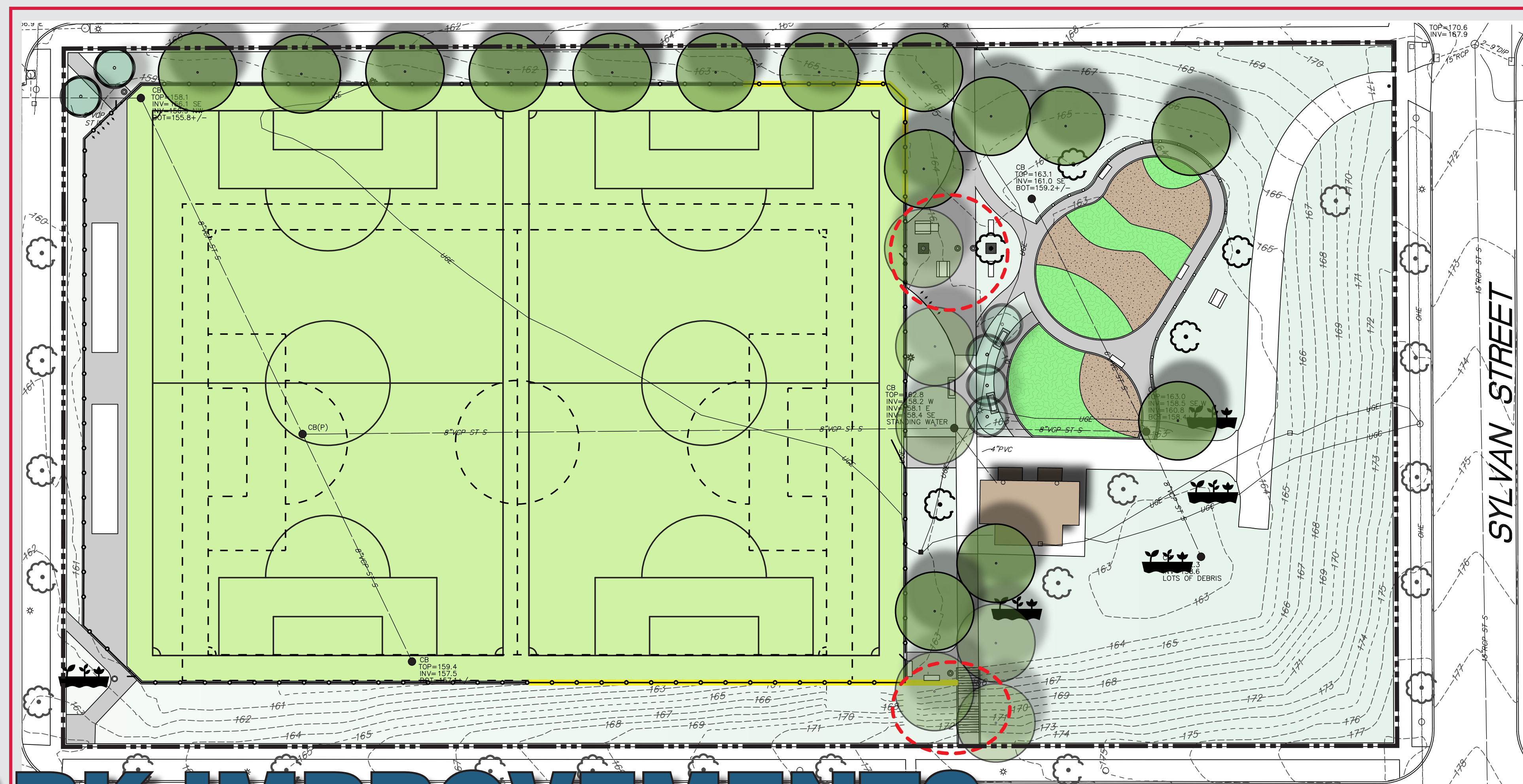


MEETING #2 CONCEPTS

Concept #1



Concept #2



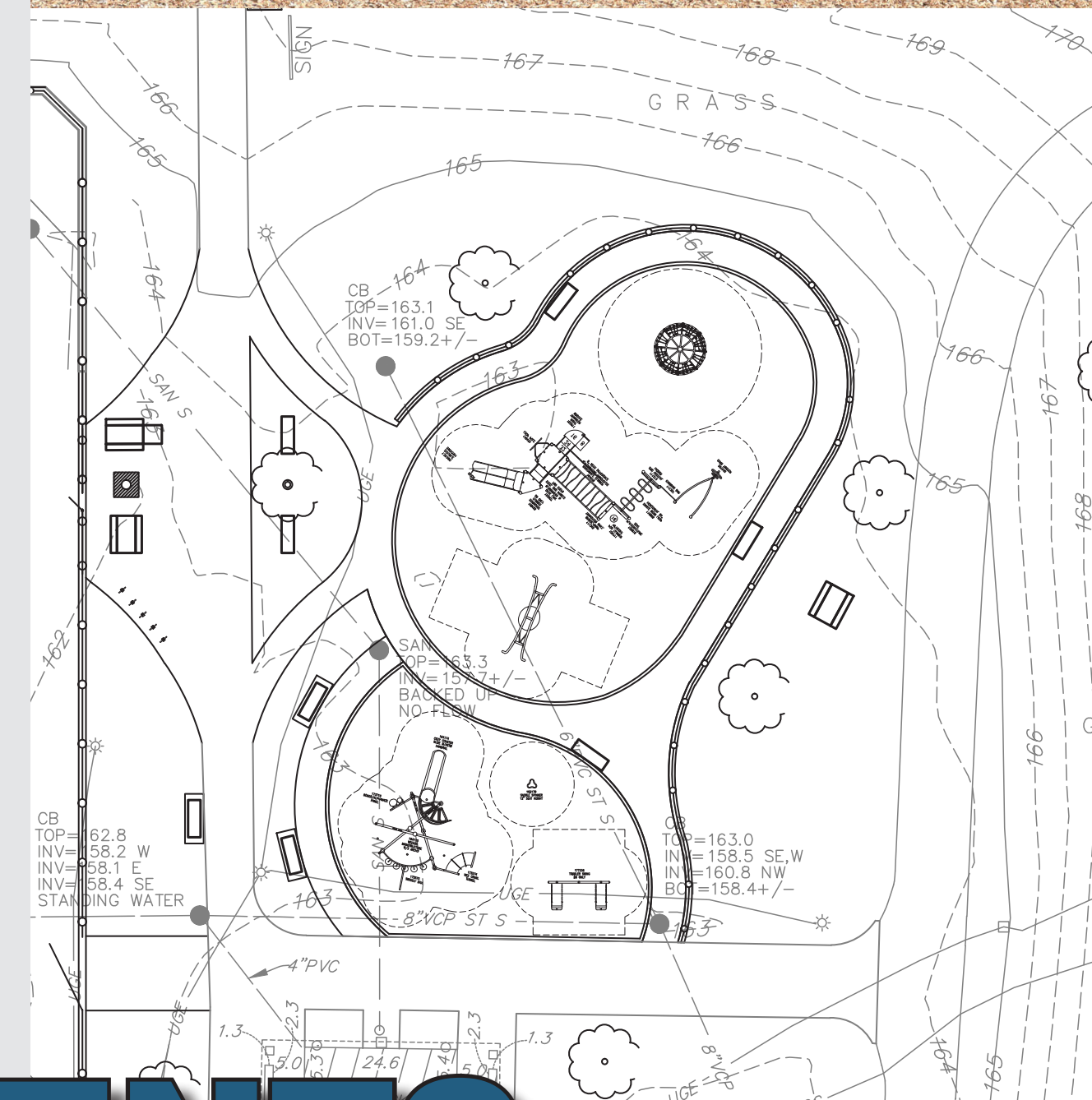
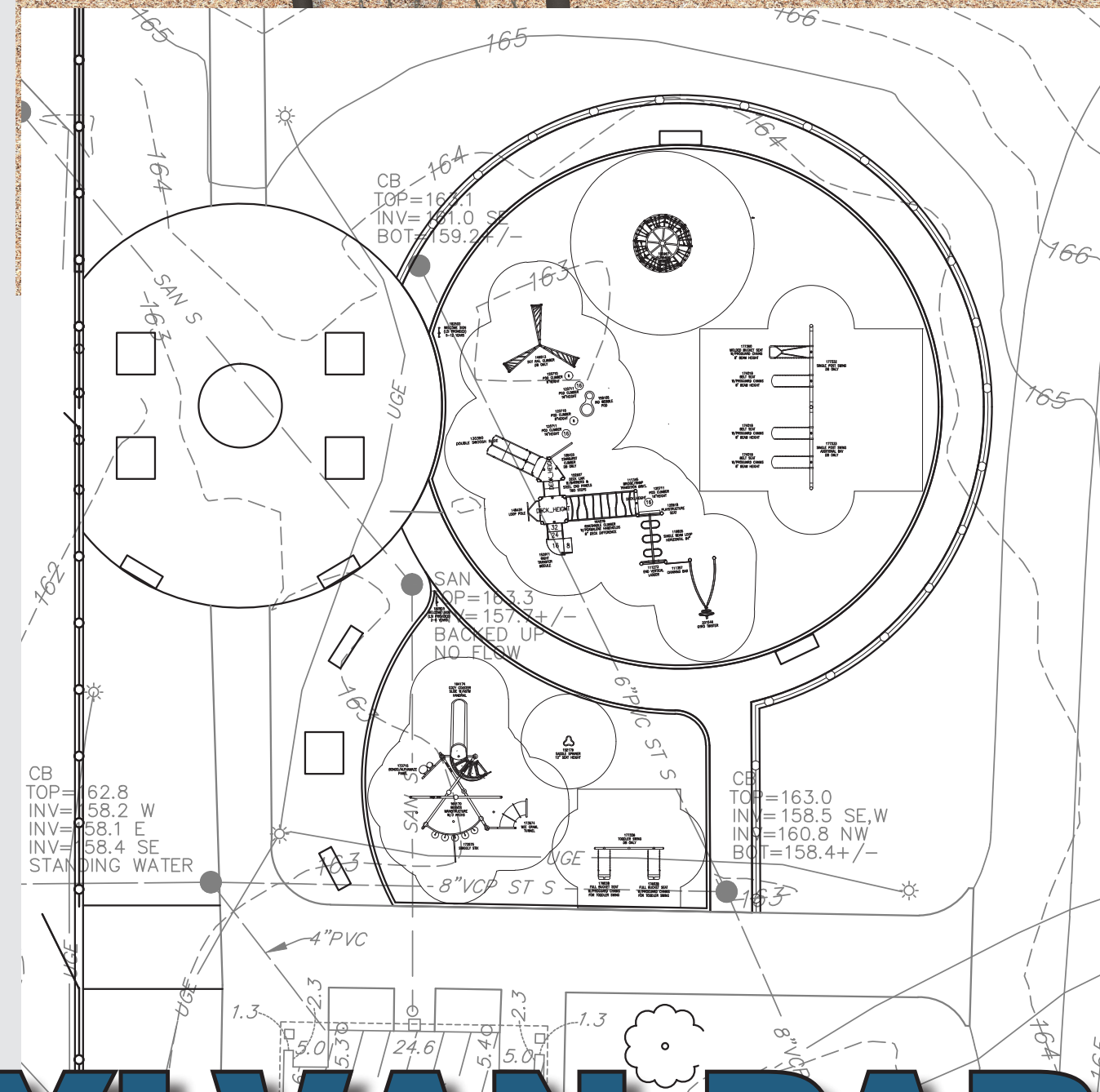
SYLVAN PARK IMPROVEMENTS

MEETING #2 PLAY EQUIPMENT LAYOUT

Concept #1



Concept #2



SYLVAN PARK IMPROVEMENTS

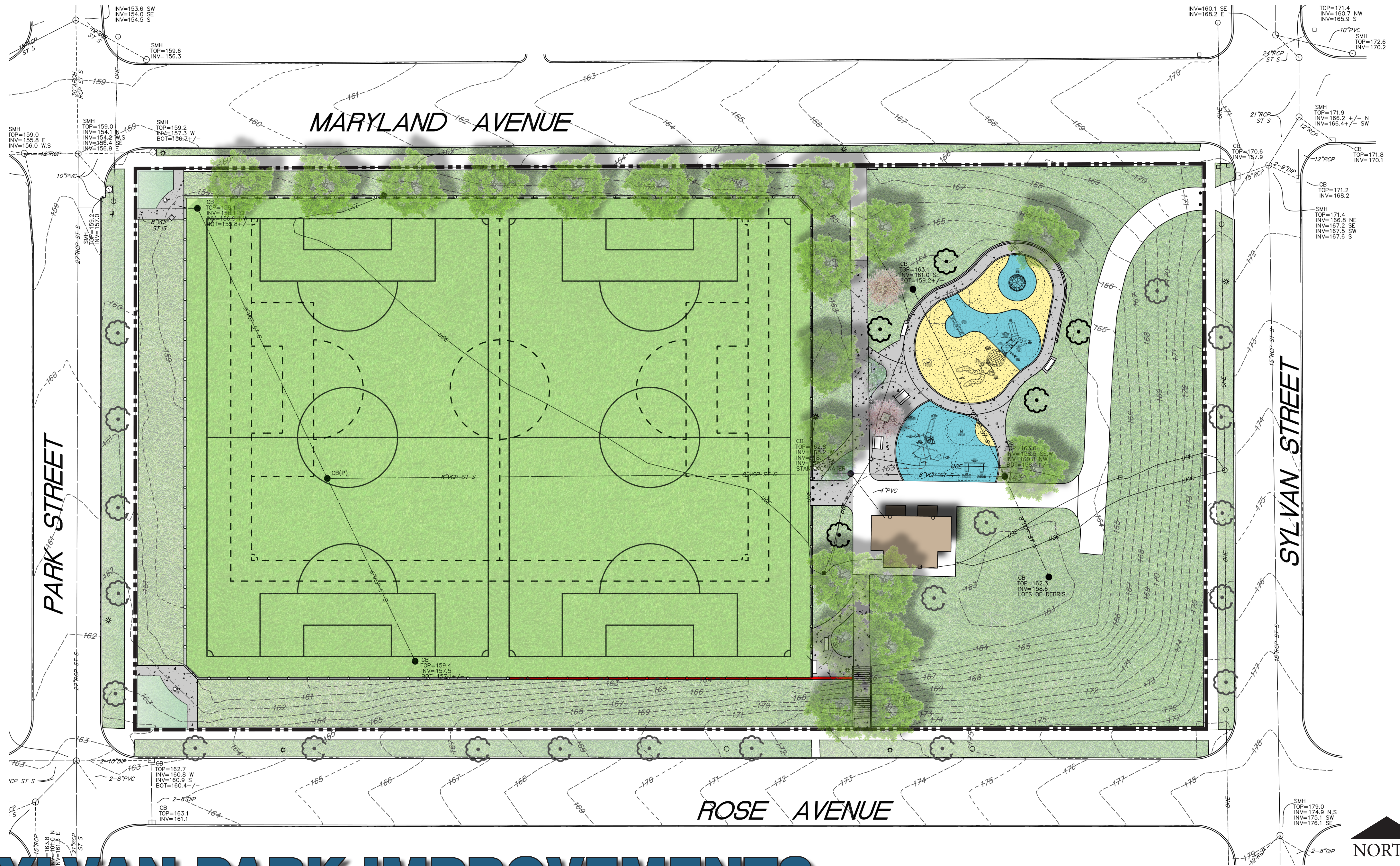
MEETING #2 KEY COMMENTS

COMMENTS:

- Like separation of the 2-5 & 5-12 play container
- Remove existing chain-link fence on east side & replace with ornamental fence
- Keep existing trees
- Maintain open sight line to front of restroom building
- Alignment of north and south entrance with corridor lined with trees
- Central plaza with seating opportunities
- Minimize play resilient surfacing to add more play value
- Preference for group swing and group spinner
- Like the three combination soccer fields



MEETING 3 CONCEPT SITE LAYOUT



SYLVAN PARK IMPROVEMENTS

MEETING 3 PLAY AREA LAYOUT

Key Ideas

- Separation of 2-5 & 5-12 play area
- Combination of sand and rubber resilient surfacing for 2-5 & 5-12 play area
- Replace service road chain gates with removable bollards for access from Sylvan St.
- Looped path around play area
- Central plaza with seating
- Existing trees to remain
- New trees for future shade
- Open sight line to front of restroom building
- Pollinating gardens

- ADA Path
- Park Sign
- Removable Bollards
- 5-12 Play Area
- Ornamental Fence
- Bike Racks
- 2-5 Play Area
- Pollinating Gardens
- Athletic Field Sign
- Removable Bollards
- New Stairs

LEGEND

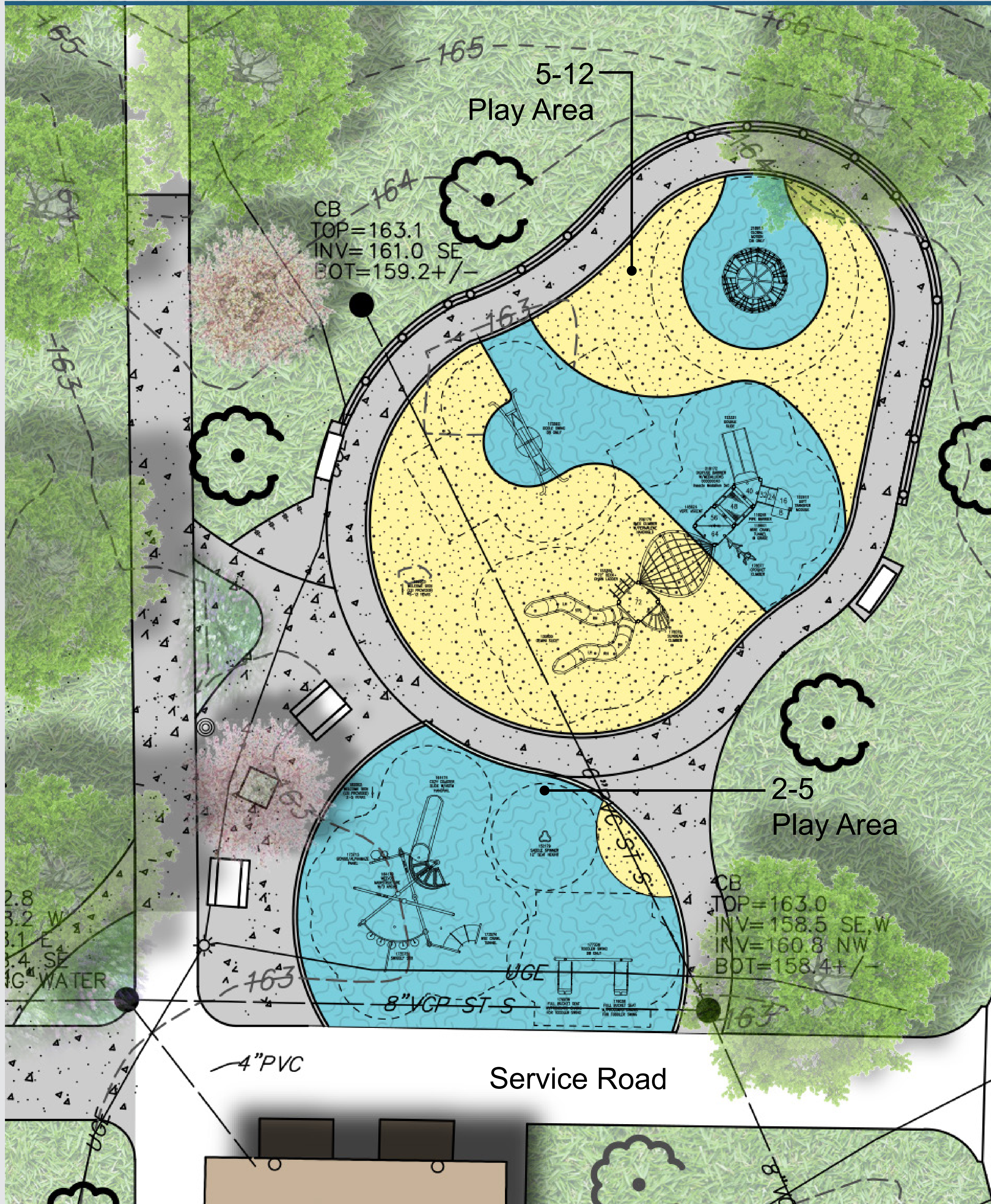
Resilient Surfacing	
Proposed Walks	
Play Sand	
Bench	
Picnic Tables	
Existing Tree	
Proposed Trees	
Park Access	



4728 SQ. FT.

SYLVAN PARK IMPROVEMENTS

MEETING 3 PLAY EQUIPMENT LAYOUT



NORTH
4728 SQ. FT.

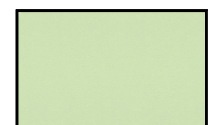
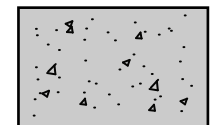



SYLVAN PARK IMPROVEMENTS

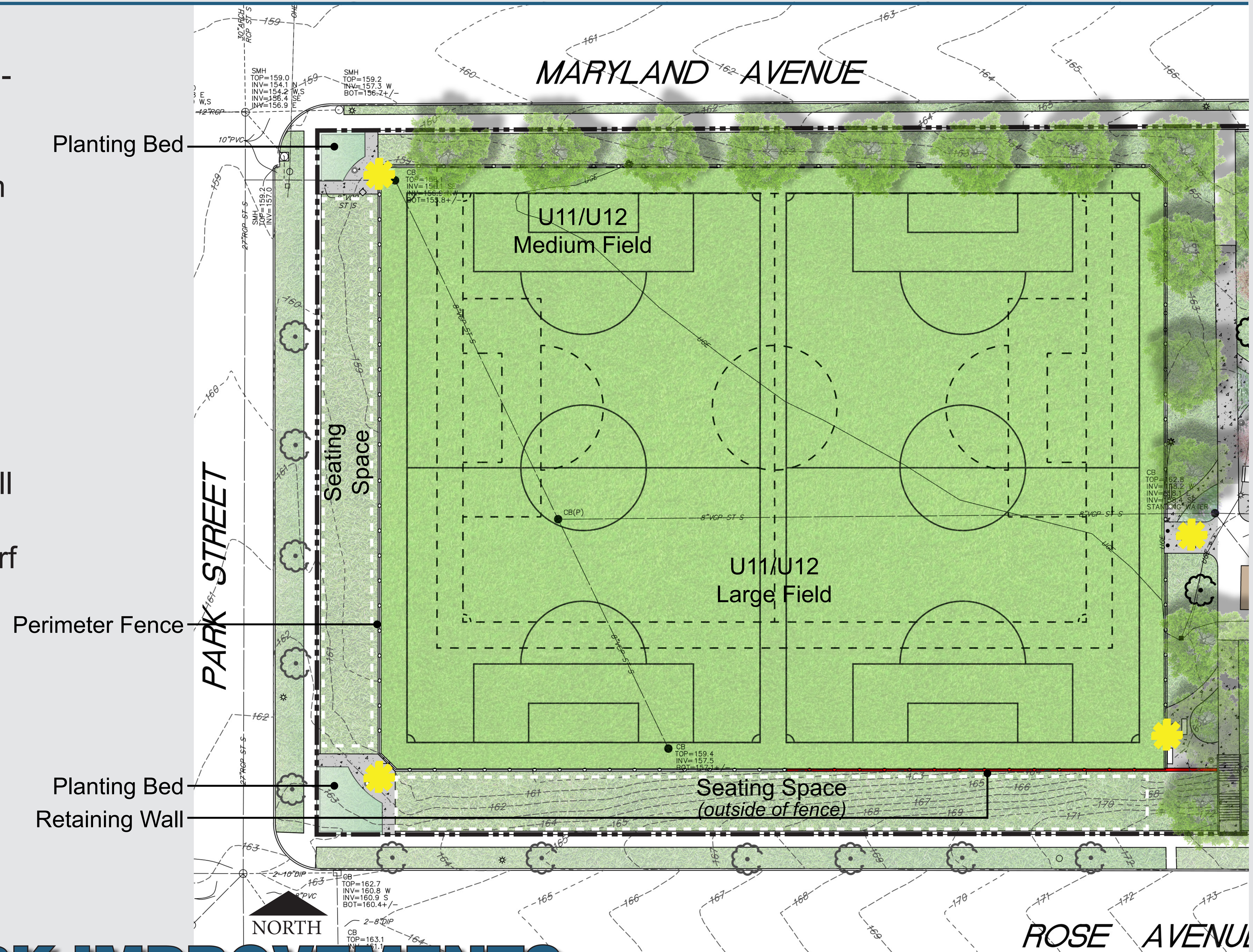
MEETING 3 ATHLETIC FIELD LAYOUT

Key Ideas

- Remove all existing chain-link fence
- Fenced-in three soccer U11/U12 fields - 2 medium & 1 large fields
- Tall fence behind soccer goals
- Seating opportunities on natural turf along Park Street & Rose Ave
- Trees planted along Maryland Ave to screen tall fences
- Fields to be all artificial turf
- Retaining walls by steep slope

LEGEND

Artificial Turf	
Proposed Walk	
Existing Trees	
Proposed Trees	
Field Access	



PLANTING OPTIONS/DETAILS

POLLINATING GARDEN

NATIVE PLANTINGS WITH CLEAN EDGE

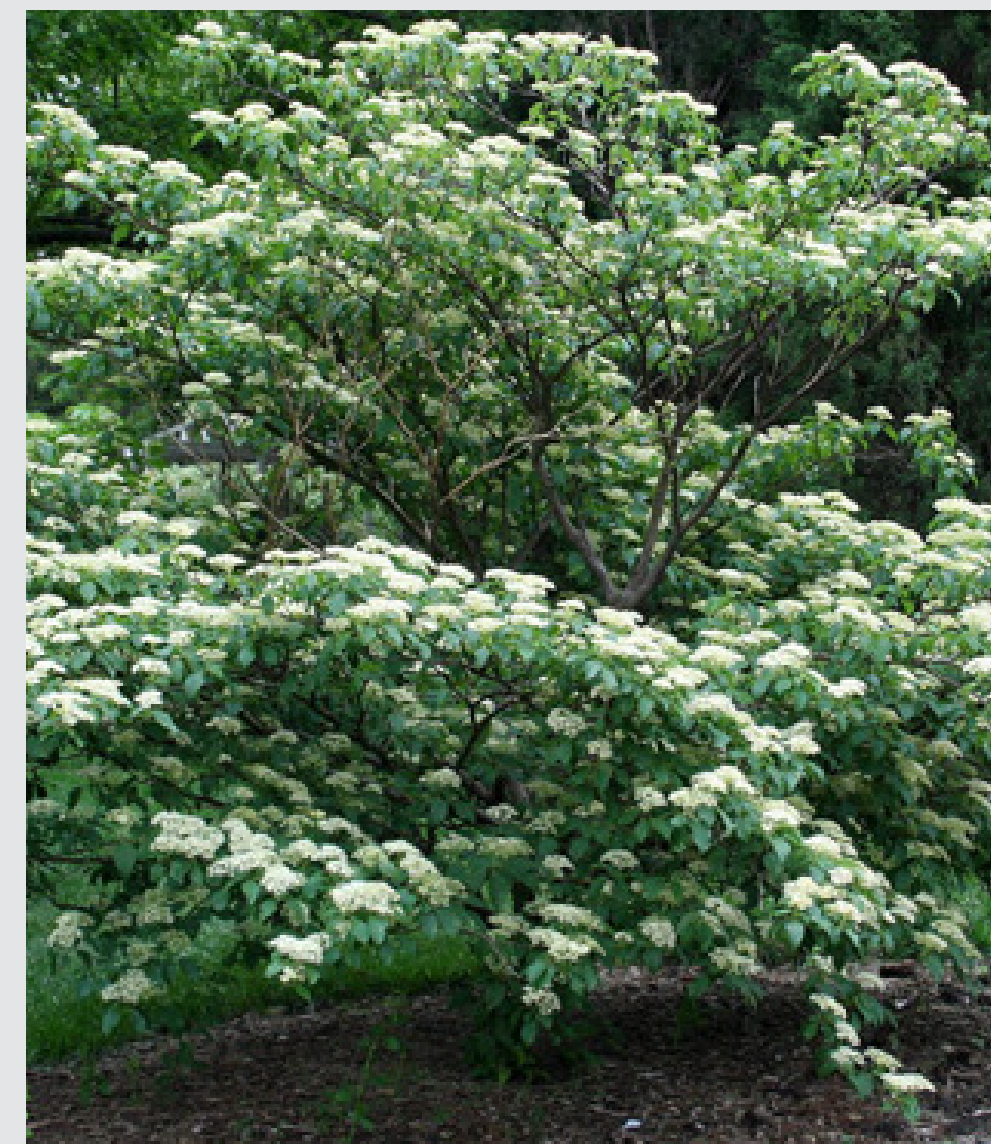


ORNAMENTAL TREES - PROVIDE SEASONAL INTEREST

SERVICEBERRY - Edible Fruit Tree - Spring and Fall Interest



DOGWOOD - Flowering Shrub - Spring and Fall Interest



CRABAPPLE - Flowering Interest

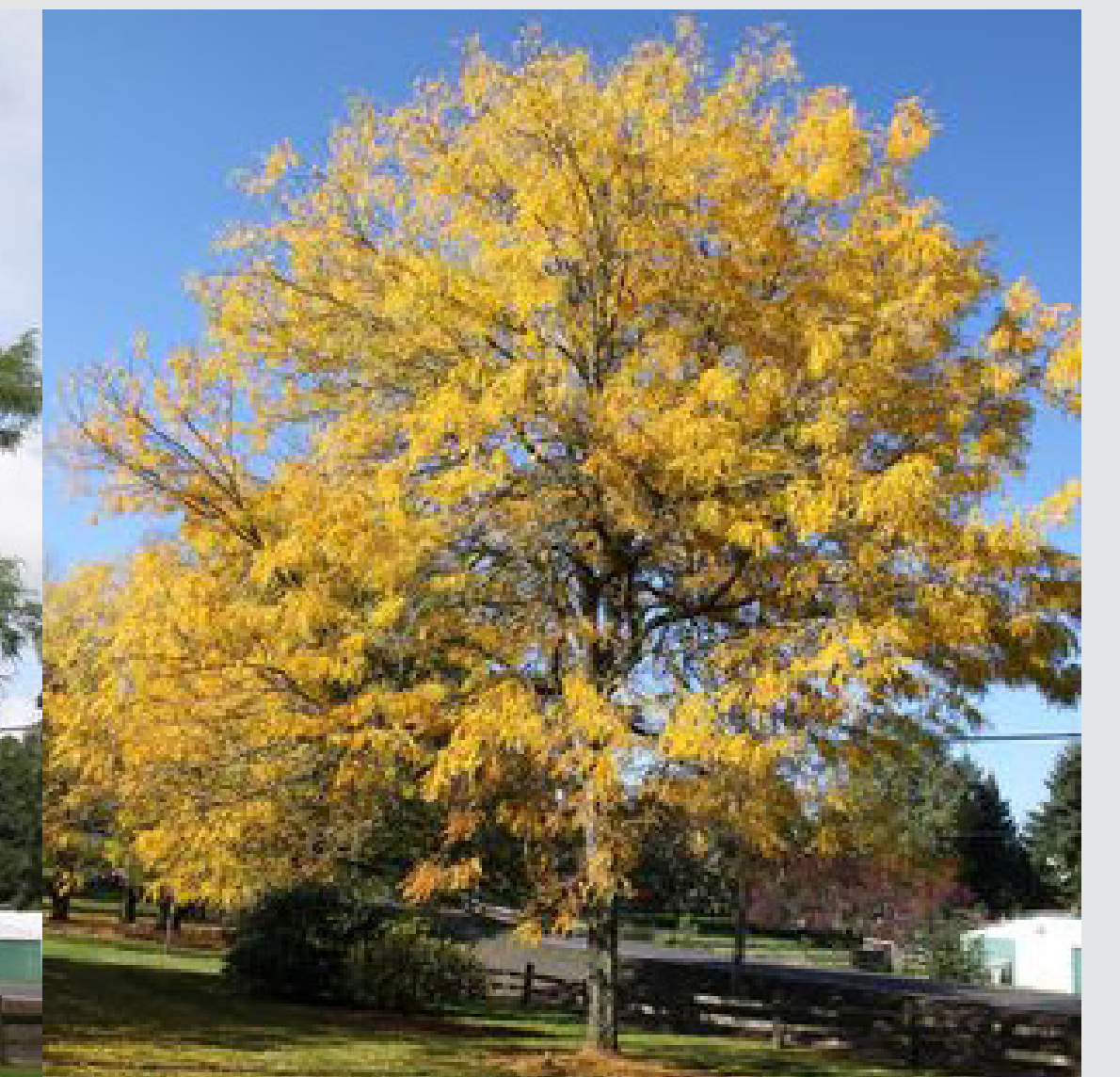


CANOPY TREES - SHADE INTEREST

ACCOLAGE ELM



HONEYLOCUST



KENTUCKY COFFEETREE



SYLVAN PARK IMPROVEMENTS

FURNISHING/DETAILS

PICNIC TABLE OPTIONS: Square, Rectangular



WASTE RECEPTACLE



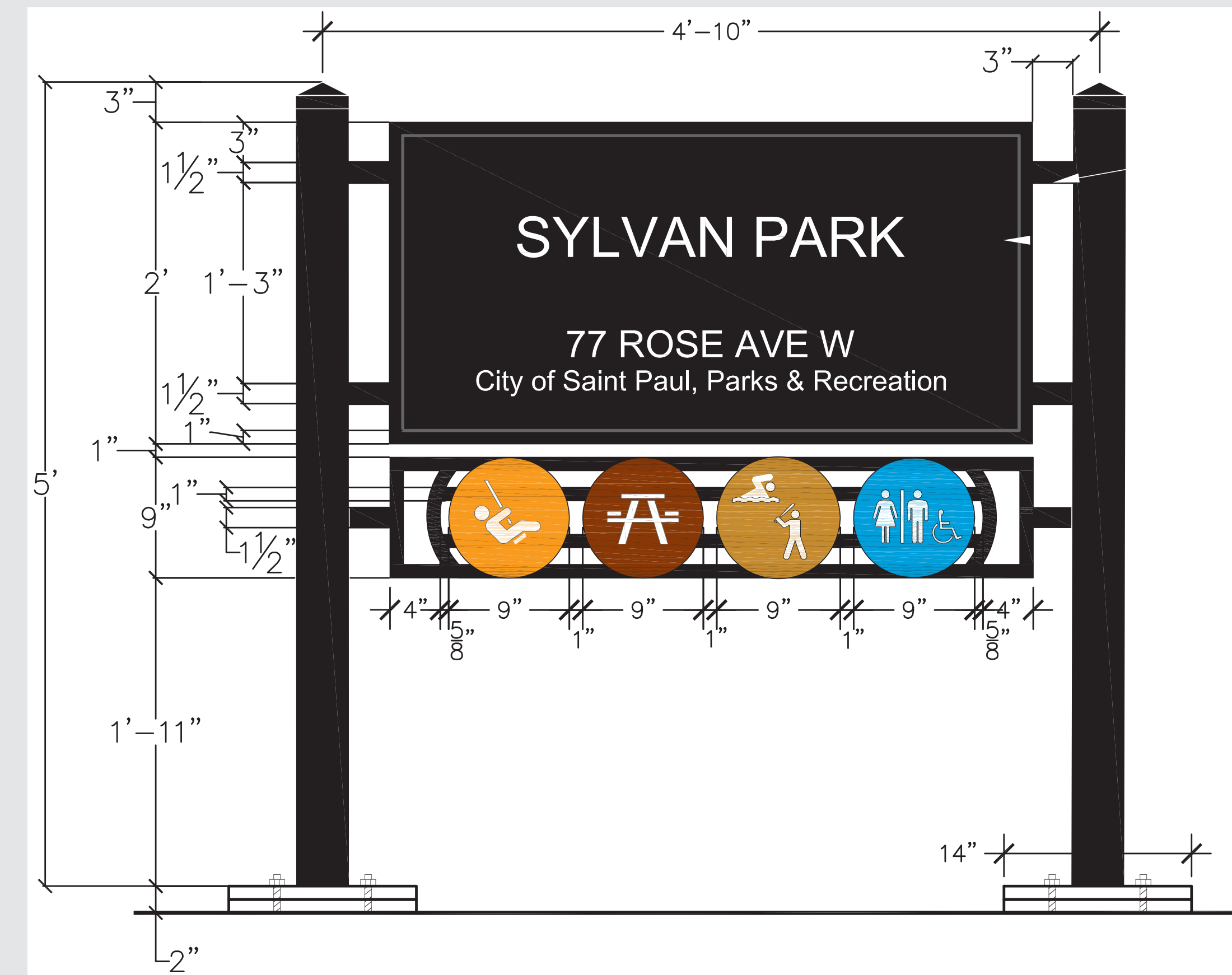
ORNAMENTAL FENCE: Industrial Strength



FURNISHING OPTIONS: Perforated, Slat, Rail



PARK SIGN



FURNISHING OPTIONS: Recycled Plastic



BICYCLE RACK



SYLVAN PARK IMPROVEMENTS

PUBLIC ART - UPDATE



**Public Art meeting
to come!**

Local Artist

- Karen Artist?
- Other?

Mosaic Artwork

- A colorful and interactive art
- Durable and long lasting material
- Available infrastructure reducing cost
- Artwork to reflect community
- Would like a local artist to participate

PROJECT DISCUSSION

Project Scope

1. Discuss play area concept & layout
 - Play Equipment
 - Play Surfacing
2. Athletic Field
3. Discuss Public Art
4. What's next?



SYLVAN PARK IMPROVEMENTS

THANK YOU FOR YOUR PARTICIPATION!!

WHAT WOULD YOU LIKE TO HAVE IN A NEW PLAY AREA?

Misc. Equipment

Spinning
Ages 5-12

Swinging/Rocking
Ages 5-12

Climbing
Ages 5-12

NET CLIMBERS

- DANGEROUS

Advantages

- Minimal flat surfaces
- High visibility
- Climbing focused
- Provides for new play experiences
- Promotes group/interactive play

Disadvantages

- Expensive
- Long lead time/repair time
- Limited play experience
- May exclude less-social children
- Limited accessibility

TRADITIONAL

Advantages

- Familiar to most users
- Provides for a variety of age groups
- Tend to provide shade, defined spaces
- Provides resting, hang-out points
- Large variety of play opportunities

Disadvantages

- Impedes visibility
- Common
- High amount of plastic leads to colors fading
- A lot of flat surfaces

MODERN

Advantages

- High volume of users
- Works upper body and core, develops coordination
- High visibility (can see through the equipment)
- Provides for new play experiences
- Helps develop coordination

Disadvantages

- Unfamiliar to many users
- May not provide for all strength levels, limits accessibility
- A lot of the play features are similar
- May require a lot of space

Water feature

Swings

Monkey bar

Basketball court

No sand

Play area for 2-5 yrs

shaded picnic tables

barbecue grills

miniature golf

more swings

SOCCER

Sylvan Park

SAINT PAUL
PARKS & RECREATION

For Future Updates Please Visit: www.stpaul.gov/SylvanPlayArea-Field

SYLVAN PARK IMPROVEMENTS