

# WELCOME

## Victoria Park Stormwater Feature Feasibility Study

COMMUNITY MEETING  
VICTORIA PARK DESIGN ADVISORY COMMITTEE  
SEPTEMBER 13, 2017

**6PM-6:15PM** - Welcome/Gathering, Informal preview of boards

**6:15PM-6:45PM** – Presentation

- Welcome (Parks)
- Background Summary (Parks)
- Presentation of Concept (SRF)
- Next Steps (Parks)

**6:45PM-7:30PM** – Informal Review of Concepts, Receive Feedback

## Meeting Goal:

To receive feedback from the community regarding the Concept Plan and Stormwater System.

## Project Goals:

1. Provide a unique stormwater feature that celebrates stormwater as a park amenity: functional, attractive, educational, and interactive
2. Amenity that is safe for human interaction
3. Advance concept to guide future implementation
4. Establish preliminary cost estimate for phasing and O&M costs



ACTIVE PARK

- GENERALLY DEFINED AS AREA NORTH OF RAIL ROAD TRACKS

PASSIVE PARK

- GENERALLY DEFINED AS AREA SOUTH OF RAIL ROAD TRACKS

- WATER PLAZA/PARK ENTRANCE
- RECIRCULATING WATER TREATMENT
- COMMUNITY GARDENS
- NORTH PICNIC AREA
  - RESTROOMS
  - SHELTER
  - PLAY AREA/SPLASH PAD
- 40 CAR PARKING LOT
- PARK ENTRANCE
- AMPHITHEATER
- OPEN WATER WETLAND
- PARK ENTRANCE
- HISTORIC QUARRY INTERPRETIVE OPPORTUNITY
- SHRUB CARR WETLAND
- EXISTING WETLAND
- BIRD HABITAT/MOIST SOIL CELLS
- HIGHLAND PARK ACCESS TRAIL



- DOWNTOWN ACCESS
- ENTRY SIGNS
- OVERLOOK WITH SEATING
- 60 CAR PARKING LOT
- SLEDDING BOWL
- RAVINE BRIDGE OVERLOOK
- CANOE/KAYAK STORAGE
- SOUTH PICNIC AREA
  - RESTROOMS
  - SHELTER
  - PLAY AREA
  - CANOE/KAYAK STORAGE
- GRP CANOE AND KAYAK DOCK
- MISSISSIPPI RIVER ACCESS TRAIL
- COMBINED BIKE/PED TRAIL WITH HISTORIC/INTERPRETIVE ELEMENTS
- RIVER SIDE GATHERING AREA
- NATIVE PRAIRIE PLANTING
- RESTING AREA
- FUTURE SHEPARD ROAD TUNNEL
- SAM MORGAN REGIONAL TRAIL
- EXPLORE ADA ACCESS TO VICTORIA PARK
- WATER CHANNEL DOWN BLUFF
- RECENT CROSBY REGIONAL PARK ACQUISITION AREA-TRAIL CONNECTION
- EXISTING TUNNEL UNDER SHEPARD RD.
- RIVER OVERLOOK
- CROSBY REGIONAL PARK TRAIL ACCESS



ENGINEERS  
PLANNERS  
DESIGNERS



## Priority Projects - Median

1. **Internal park trail system**
2. Picnic shelter/restrooms - north side
3. Play area - north side
4. **Picnic shelter/restrooms - south side**
5. Multi-use athletic field
6. **Play area - south side**
7. External trail connections
8. Boardwalk in wetland
9. **Mown turf open space**
10. **Bird habitat**
11. Recirculating water feature
12. **Shepard Road overlook**
13. **Invasive plant management**
14. Community gardens
15. Amphitheater
16. Fishing pier and shoreline enhancements
17. Historic quarry/interpretive opportunity
18. Public art
19. Bread oven

## Phase

- Complete**
- Planning
- Planning
- Design**
- Planning
- Design**
- Planning
- Planning
- In progress**
- In progress**
- Planning
- Complete**
- Complete**
- Planning
- Planning
- Planning
- Planning
- Planning

## Miscellaneous Items:

1. Shared-use parking lot installed (North)
2. Victoria Park Apartments completed.
3. Monitoring wells capped and remediation pump house removed.
4. Berms, native seeding, native trees and overlook completed (South Side)
5. HRA currently owns Victoria Park. Land/money transfer to occur at end of 2017.
6. Stewart Avenue expansion substantially complete.
7. Internal park trail systems substantially complete.





- 1 Entry Plaza
- 2 Nature Play Area
- 3 Interactive Open Water Feature
- 4 Confluence
- 5 Treatment Train
- 6 Picnic & Bathroom Shelter
- 7 Amphitheater & Stage
- 8 Limestone Bluff Steps
- 9 Braided Stream Channel
- 10 Existing Wetland
- 11 Wetland Boardwalk
- 12 Community Gardens & Orchard
- 13 Multi-use Athletic Field

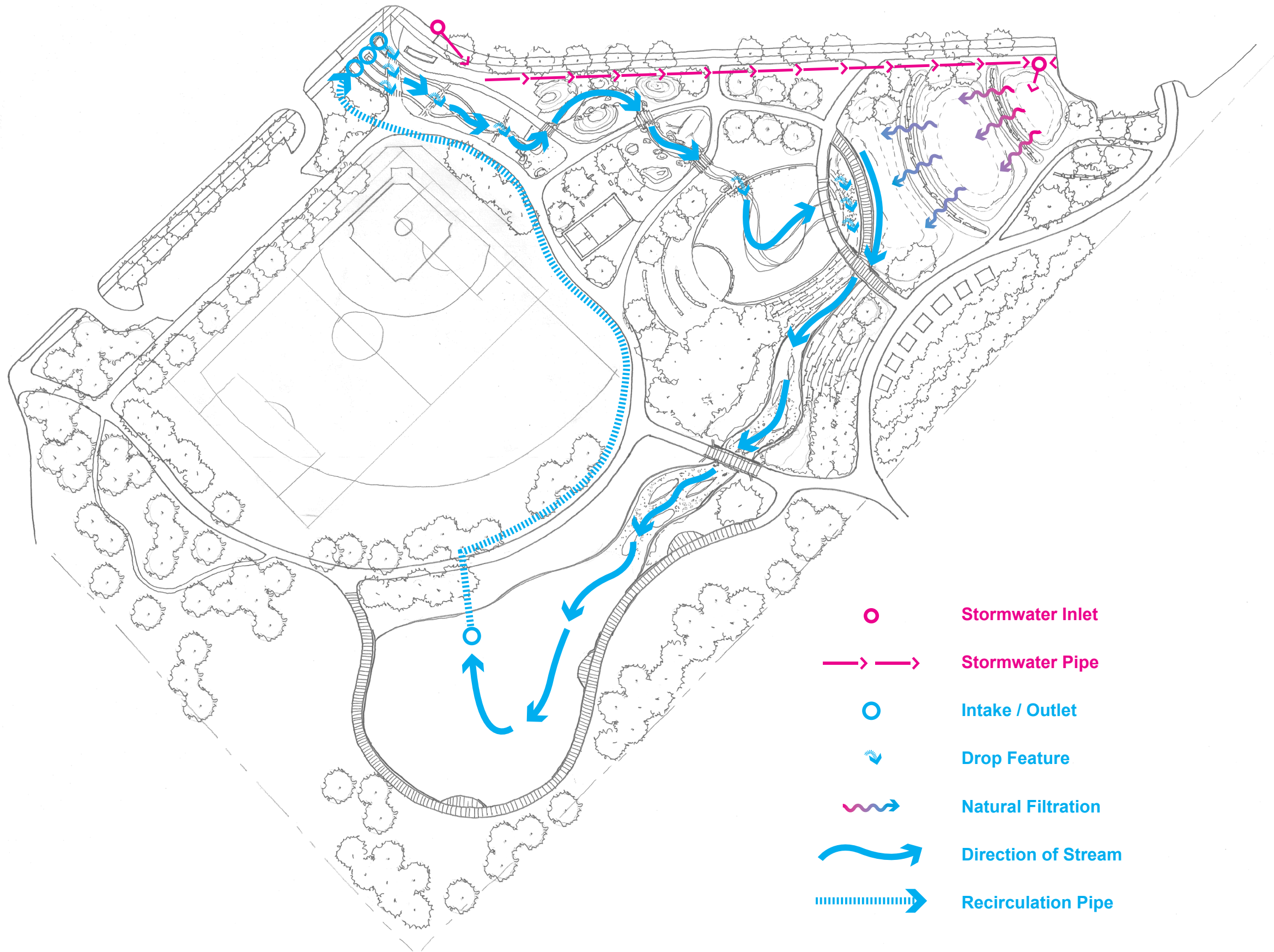
# VICTORIA PARK | Stormwater Feature Concept

September 13<sup>th</sup>, 2017



ENGINEERS  
PLANNERS  
DESIGNERS









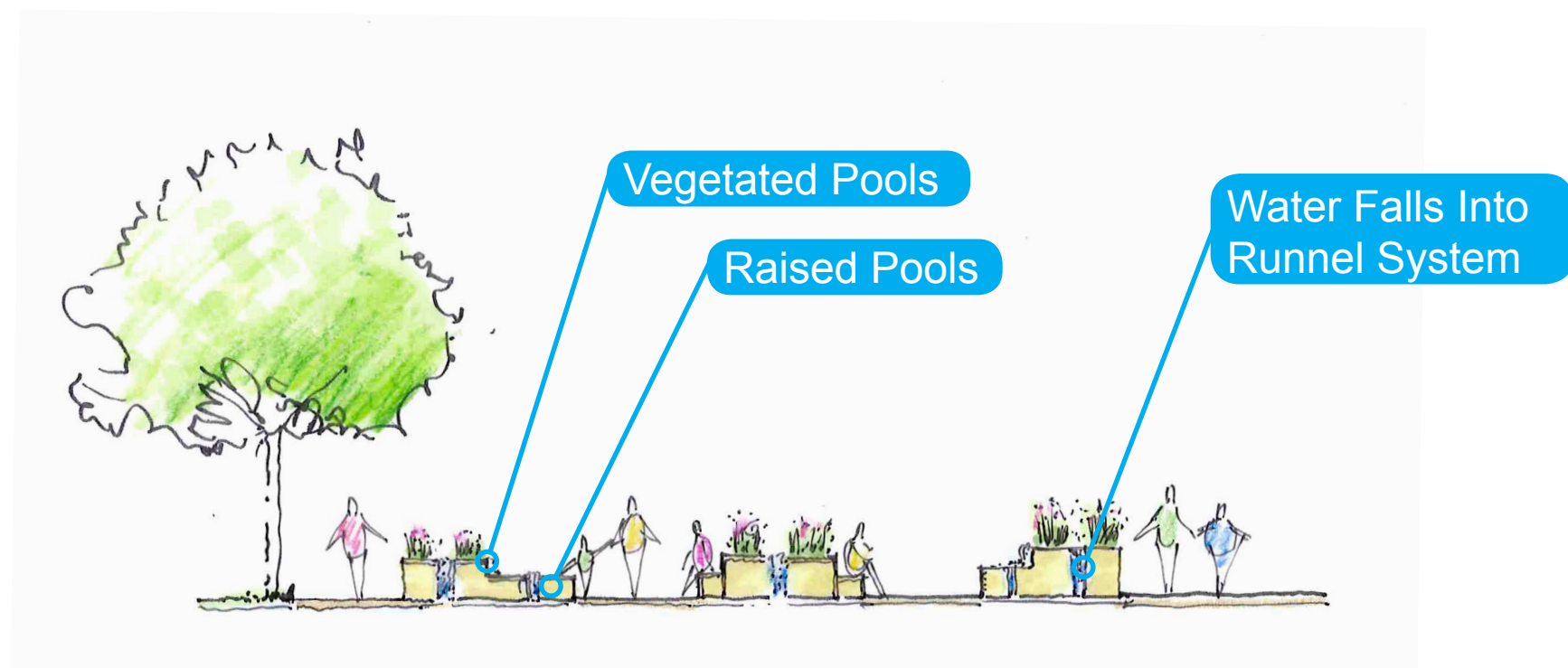
# VICTORIA PARK | Section Location Diagram

September 13<sup>th</sup>, 2017



ENGINEERS  
PLANNERS  
DESIGNERS





A<sup>1</sup> Section A - Entry Plaza A<sup>2</sup>



B<sup>1</sup> Section B - Runnels Through Entry Plaza B<sup>2</sup>



# VICTORIA PARK | Entry Plaza

September 13<sup>th</sup>, 2017







# VICTORIA PARK | Entry Plaza

September 13<sup>th</sup>, 2017







# VICTORIA PARK | Entry Plaza

September 13<sup>th</sup>, 2017







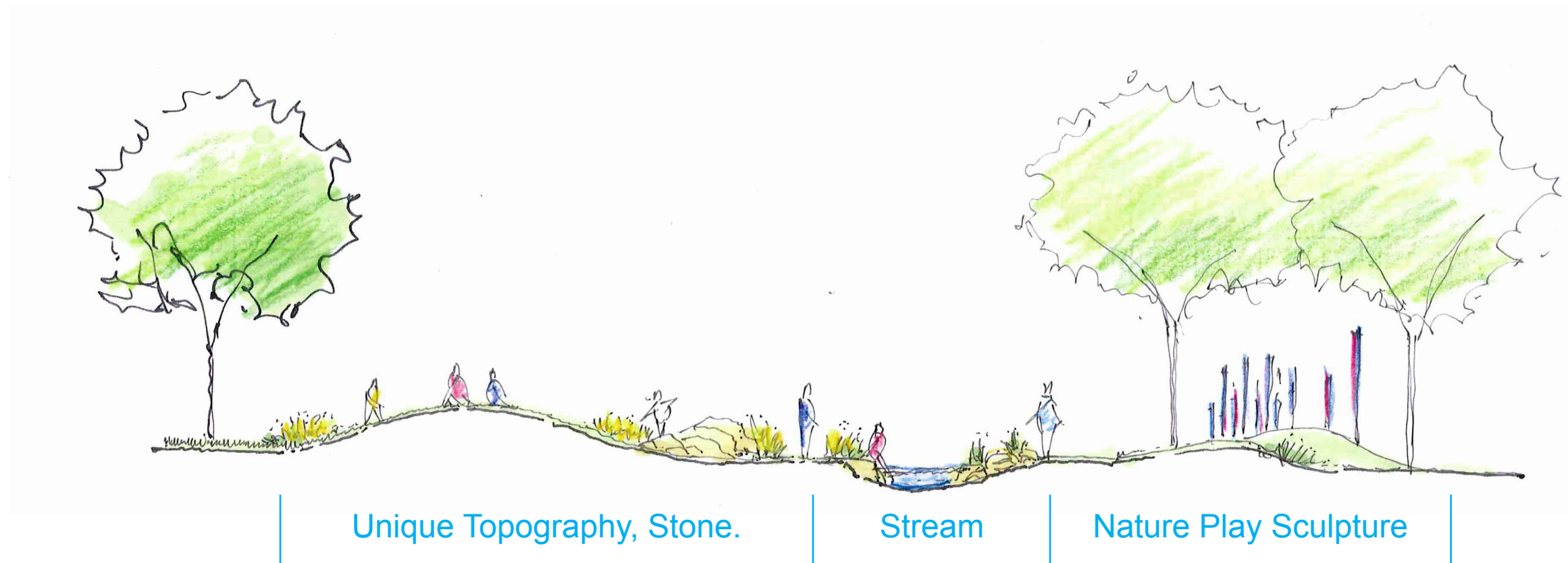
# VICTORIA PARK | Section Location Diagram

September 13<sup>th</sup>, 2017



ENGINEERS  
PLANNERS  
DESIGNERS





C<sup>1</sup>

## Section C - Nature Play Area

C<sup>2</sup>





# VICTORIA PARK | Nature Play Area

September 13<sup>th</sup>, 2017











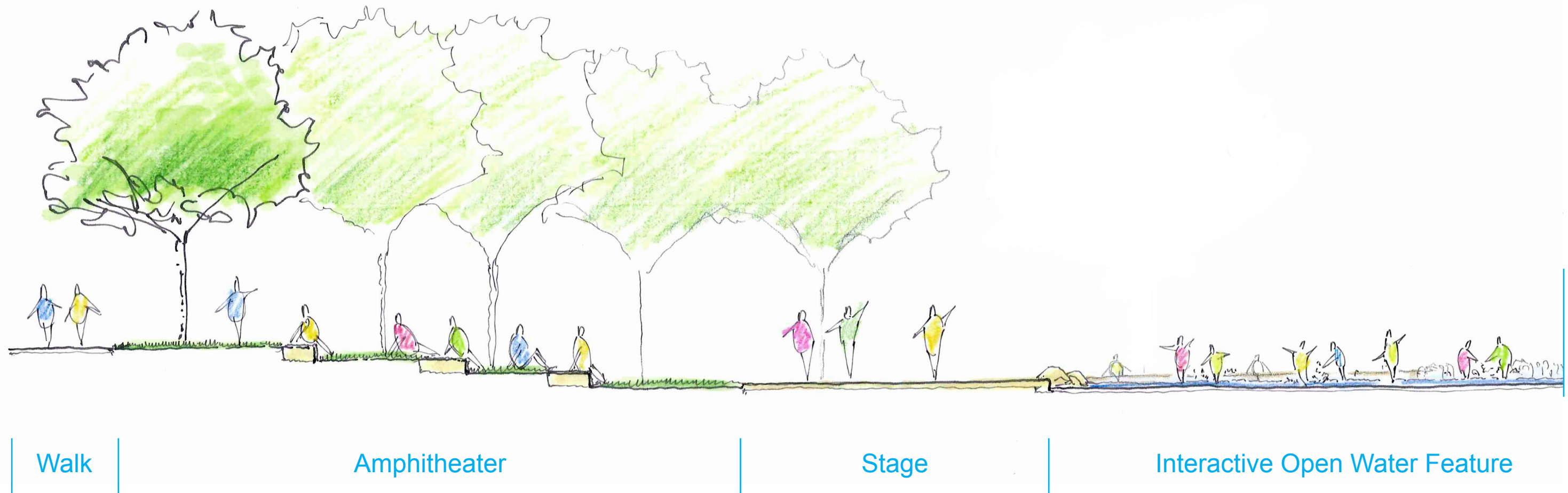
# VICTORIA PARK | Section Location Diagram

September 13<sup>th</sup>, 2017

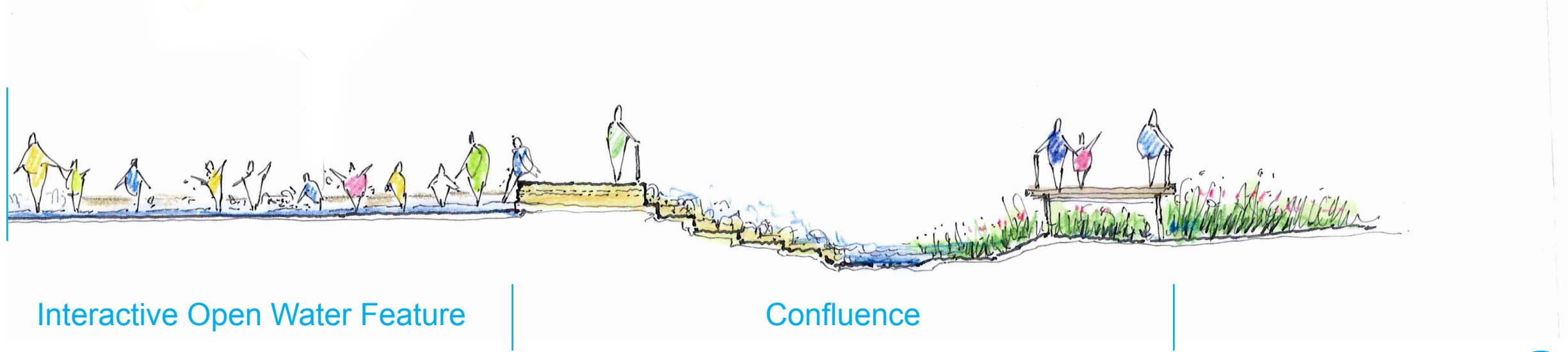


ENGINEERS  
PLANNERS  
DESIGNERS





D<sup>1</sup> Section D



Section D, cont. D<sup>2</sup>





# VICTORIA PARK | Amphitheater & Stage

September 13<sup>th</sup>, 2017







# VICTORIA PARK | Interactive Open Water Feature

September 13<sup>th</sup>, 2017







# VICTORIA PARK | Interactive Open Water Feature

September 13<sup>th</sup>, 2017







# VICTORIA PARK | Confluence

September 13<sup>th</sup>, 2017







# VICTORIA PARK | Section Location Diagram

September 13<sup>th</sup>, 2017



ENGINEERS  
PLANNERS  
DESIGNERS





Native Vegetation

Braided  
Stream Channel

Limestone Bluff Steps with Native Vegetation

Trail

E<sup>1</sup>

Section E

E<sup>2</sup>





# VICTORIA PARK | Limestone Bluff Steps

September 13<sup>th</sup>, 2017







# VICTORIA PARK | Wetland Boardwalk

September 13<sup>th</sup>, 2017



ENGINEERS  
PLANNERS  
DESIGNERS



## Tentative Schedule:

July 2017	Project Kickoff
August 2017:	½ day design charrette
<b>September 2017:</b>	<b>Design Advisory Committee/Community Meeting</b>
September: 2017:	30% Conceptual Level Drawings
October 2017:	Conduct Preliminary Environmental Review (State & Local)
October 2017:	90% Conceptual Level Drawings/ Preliminary Construction Drawings
November 2017:	Final Drawings/ Estimate of Probable Cost/ Annual O&M costs
<b>December 2017:</b>	<b>CRWD Board of Managers Presentation</b>