



July 13, 2020

SAINT PAUL TRANSPORTATION COMMITTEE

Agenda

1. Rush Line project overview.
2. 15% plans walk-through.
3. Ramsey County Rail Right-of-Way Design Guide.
4. Rush Line project next steps.
5. Request for support for 15% plans.

Adopted Locally Preferred Alternative



B R T

- Dedicated guideway BRT.
- Phalen Boulevard and Robert Street into downtown Saint Paul.
- Ramsey County rail right-of-way (shared with Bruce Vento Trail).
- Highway 61 north of I-694 into White Bear Lake.
- Explore future connections to Hugo and Forest Lake and other system improvements.

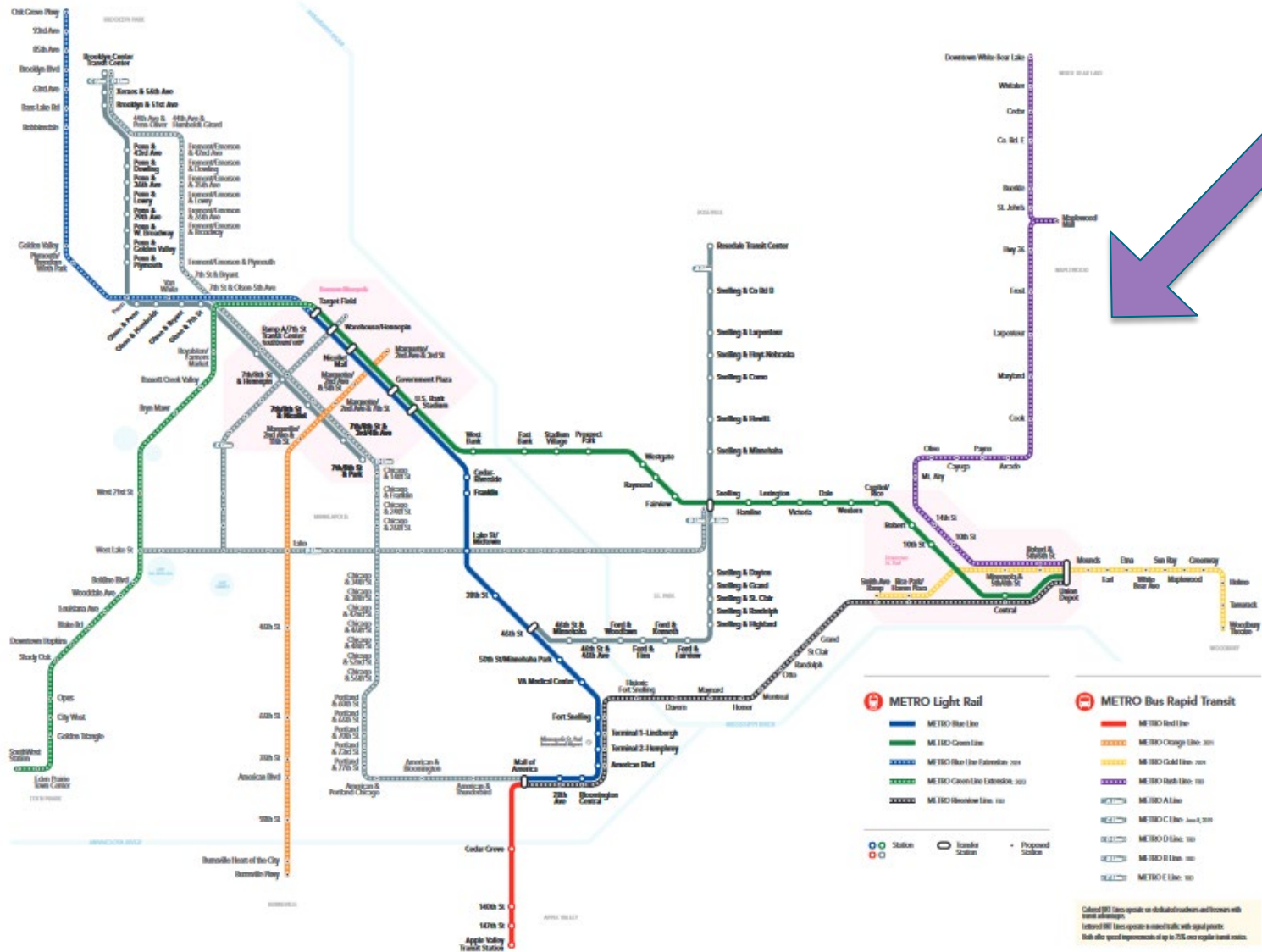


* Project assumes co-location with Bruce Vento Trail

Future Rapid Transit Network



B R T



What is Bus Rapid Transit (BRT)



B R T

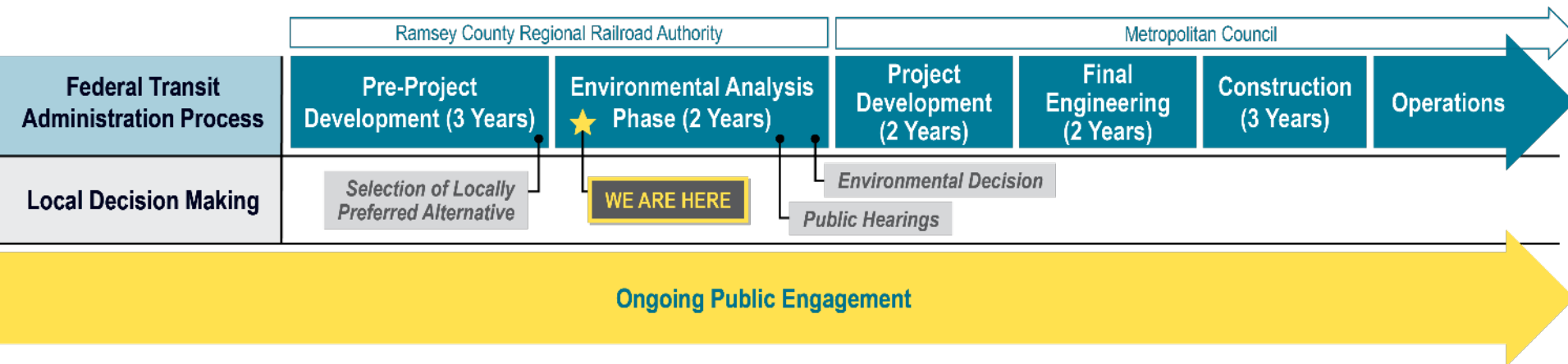
- **High-quality service.**
 - Operates mostly in own lane.
 - Frequent and reliable.
 - Serves different market than express service.
- **Modern Buses.**
 - Easy boarding at all doors.
 - Electric, quiet & low-emissions.



METRO Orange Line BRT I-35W & Burnsville Parkway station

- **Upgraded Stations**
 - Ticket Machines, Heat, Lighting, Bike Storage, Real-time departure signs, Raised Platforms, Maps, Benches Trash and Recycling

Transitway Development Process



- Environmental analysis phase key tasks:
 - Environmental Assessment.
 - Preliminary engineering.
 - Preliminary station area planning.
 - Public engagement.

Public Engagement

- Over 1,200 people engaged at more than 170 events since early 2018.
- Online surveys, email newsletters and social media also used.
- Common feedback:
 - Excitement for improved transit service on the East Side.
 - Desire to maximize access to stations.
 - Support for bicycle and pedestrian improvements.
 - Concerns about changes to the Bruce Regional Vento Trail.



Obtaining input from users of the Bruce Vento Regional Trail.

Public Engagement

- Examples of how public input has shaped the project:
 - Addition of Cook Avenue station serving Hmong Village.
 - Adjustment of Arcade Street station location and routing.
 - Development of Ramsey County Rail Right-of-Way Design Guide.



Speaking to customers at Hmong Village.

15% Plans

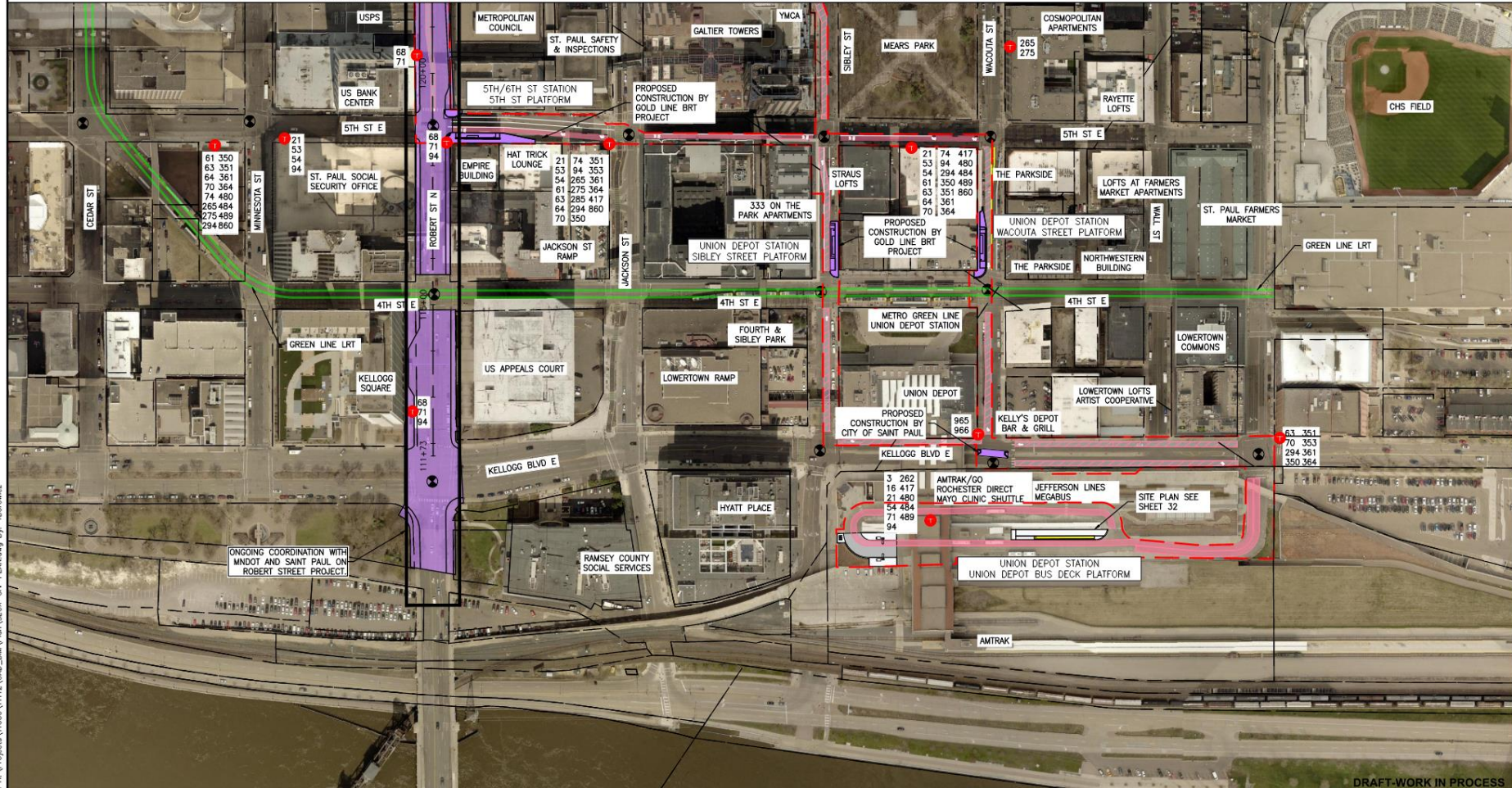
- Define station locations.
- Depict transit guideway treatment.
- Indicate traffic signal locations.
- Identify bridge and underpass locations.
- Include sidewalk improvements to fill gaps at station locations.
- Establish potential locations for stormwater treatment.

15 Percent Plan Review Process

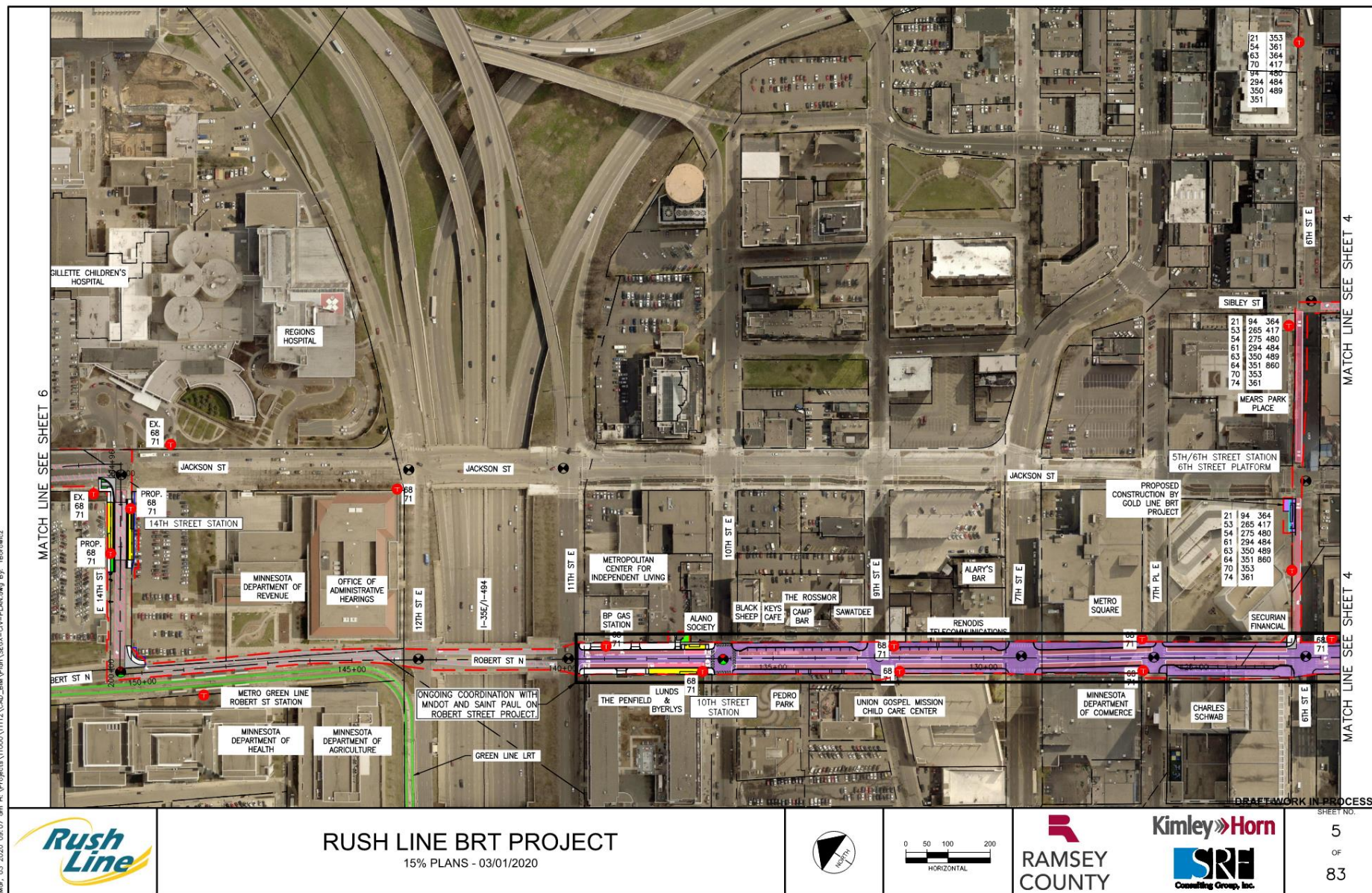
- Draft 15 percent plans were provided to Saint Paul staff and other municipal and agency partners for review.
- Comments received that required discussion were topics at issue resolution team and individual City meetings.
- Refinements were incorporated into the final 15 percent plans.
- Final 15 percent plans have been shared with technical, community and policy advisory committees.
- Coordination will continue as design advances.

MATCH LINE SEE SHEET 5

MATCH LINE SEE SHEET 5



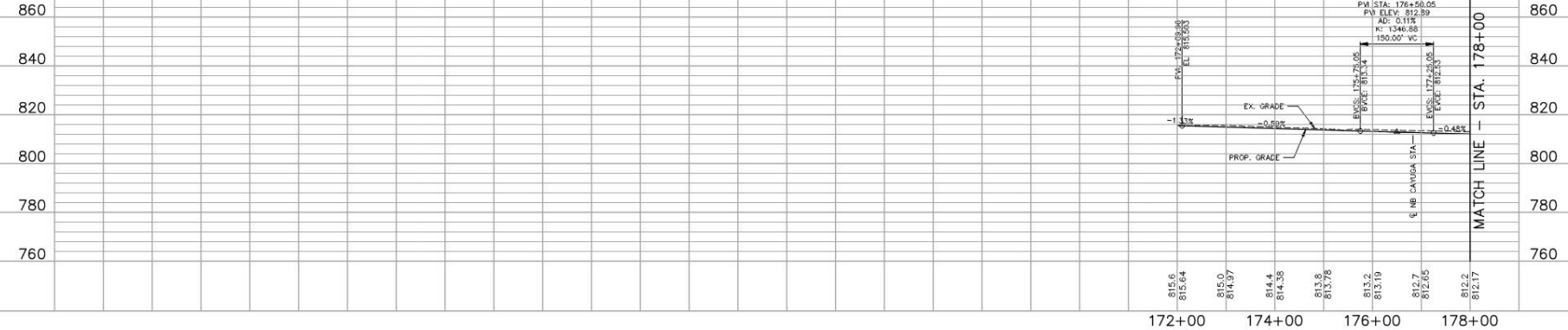
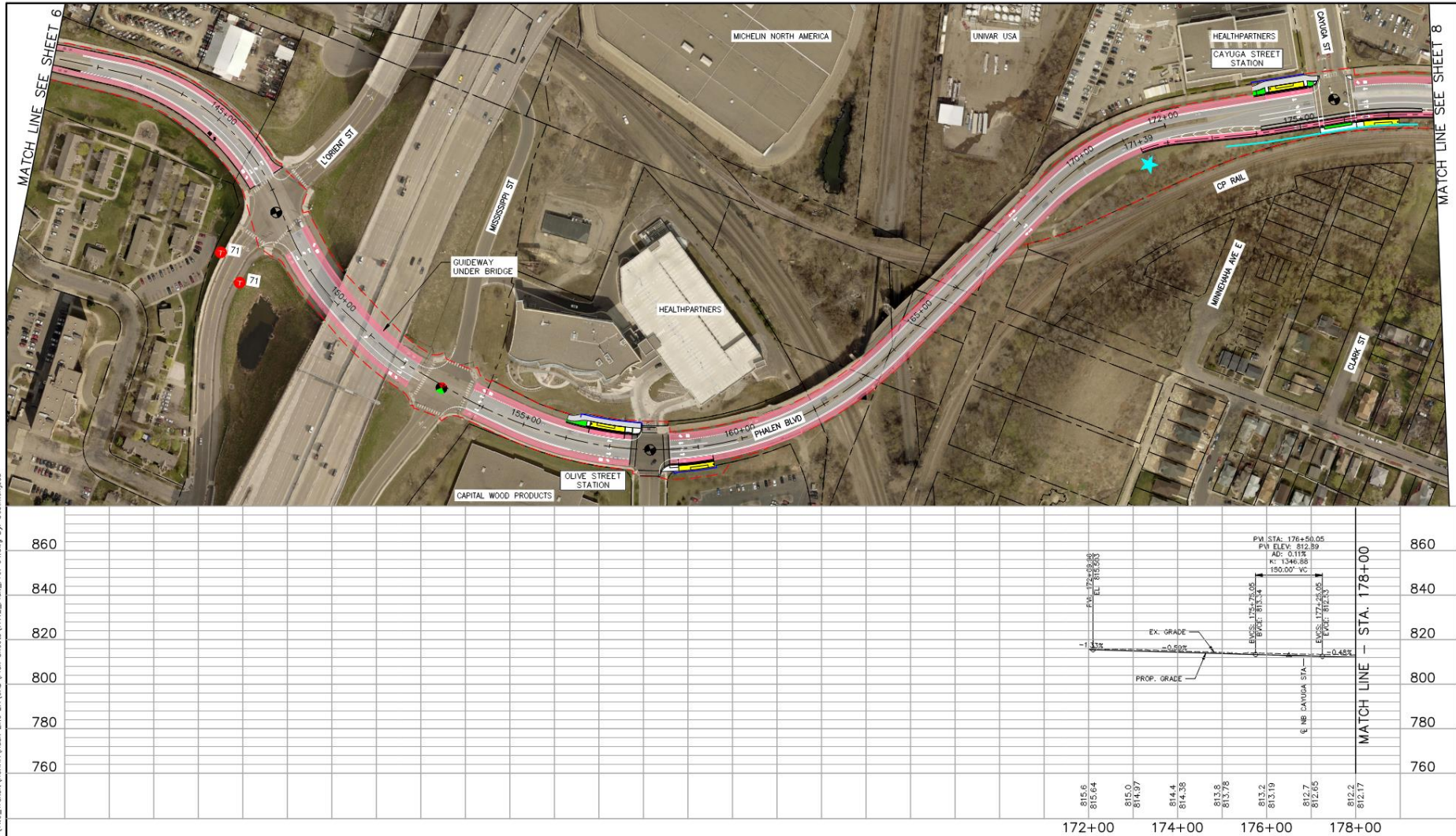
Mer, 03/20/2020 09:05 am H:\Projects\11000\11112\CAD_BIM\Plan\SEC0-CIV-PLAN.dwg By: Tborowitz

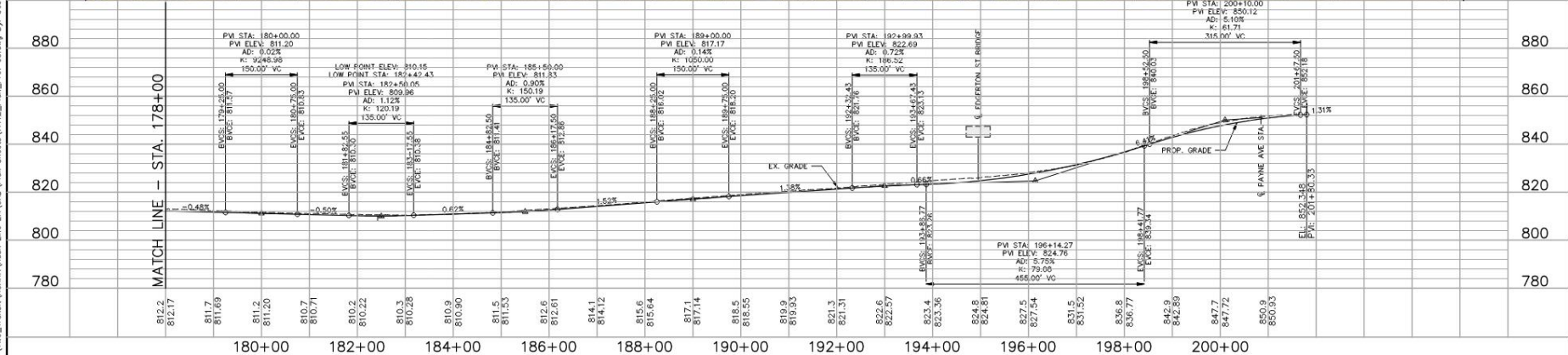
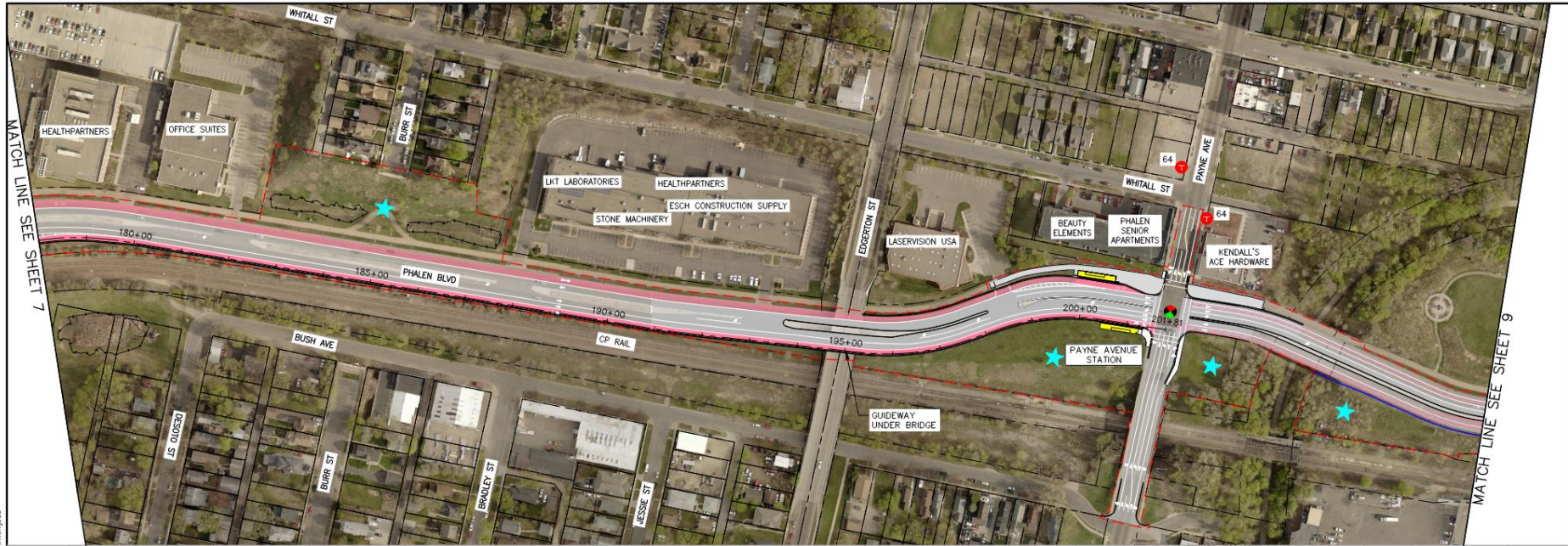


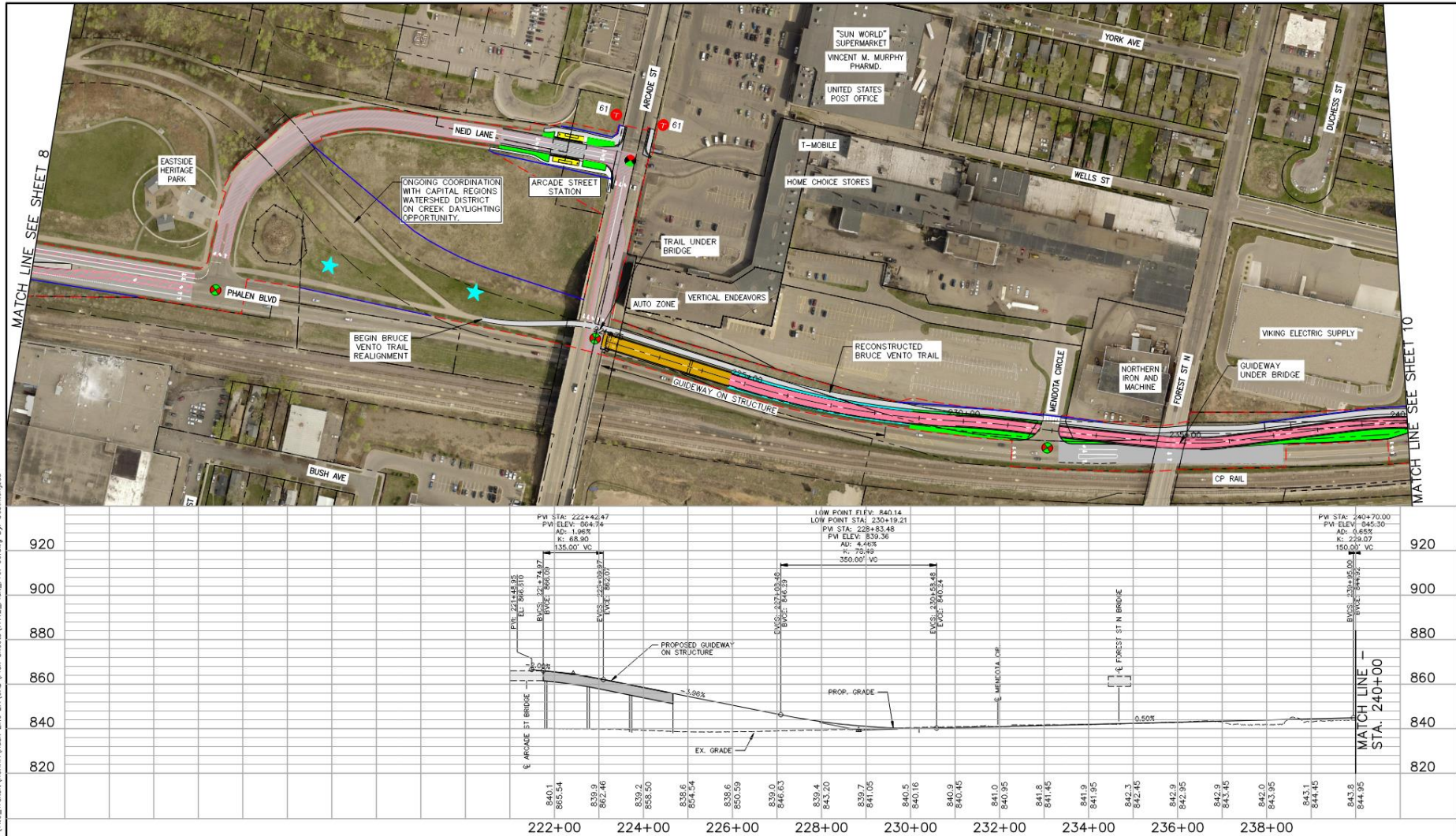


DRAFT-WORK IN PROCESS
SHEET NO.

Jun, 18 2020 07:23 am H:\Projects\11000\11112\CAD_BIM\Plan\SEDC-CY-PLAN.dwg By: borowicz



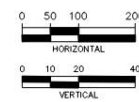




Mer, 03/2020 09:27 am K:\TMC_Transit\RRRA\Push Line EA\CAD\Plan Sheets\11112_Plan_Prof 06.dwg By: bob.morjanou

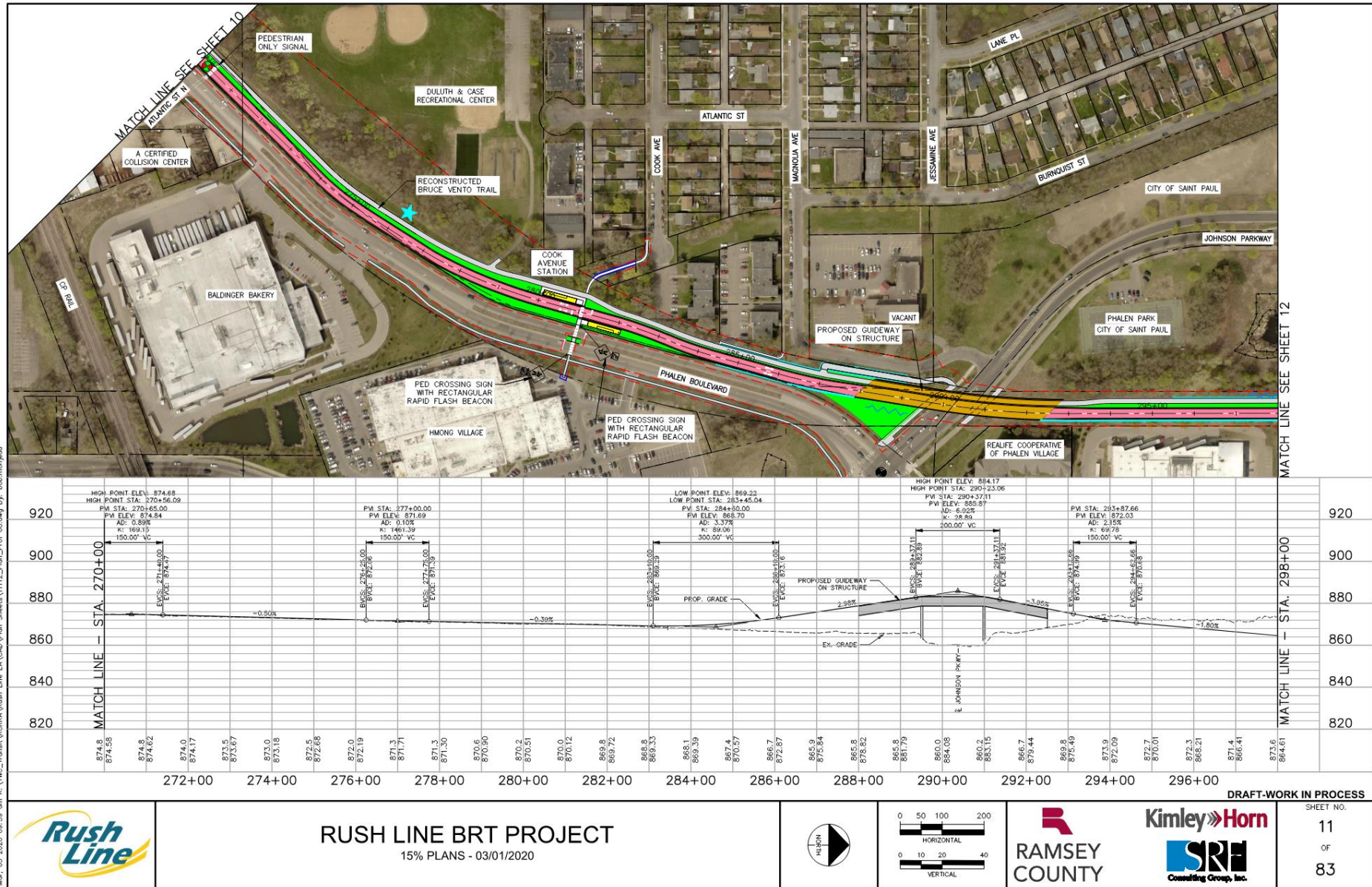


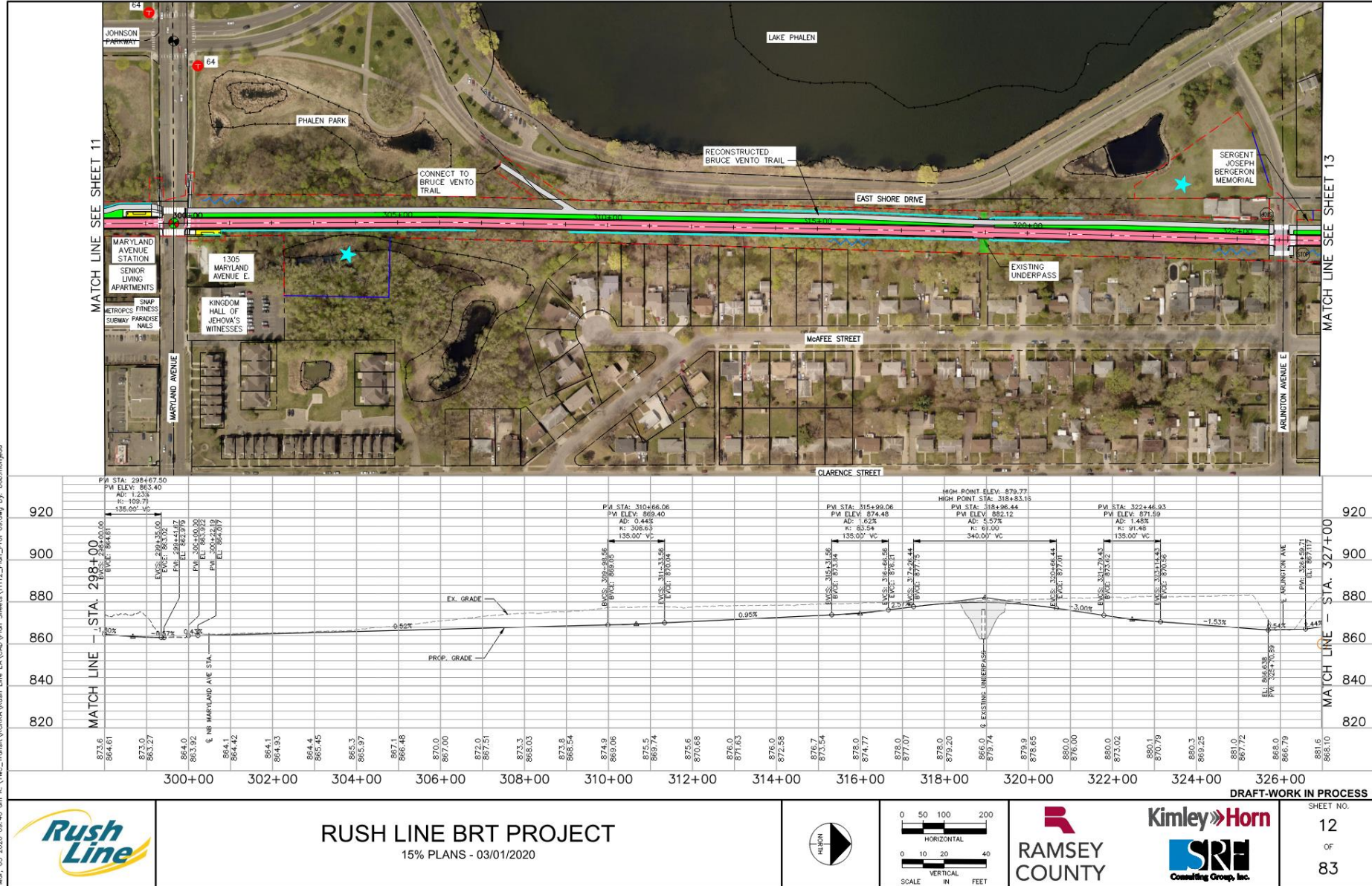
RUSH LINE BRT PROJECT 15% PLANS - 03/01/2020

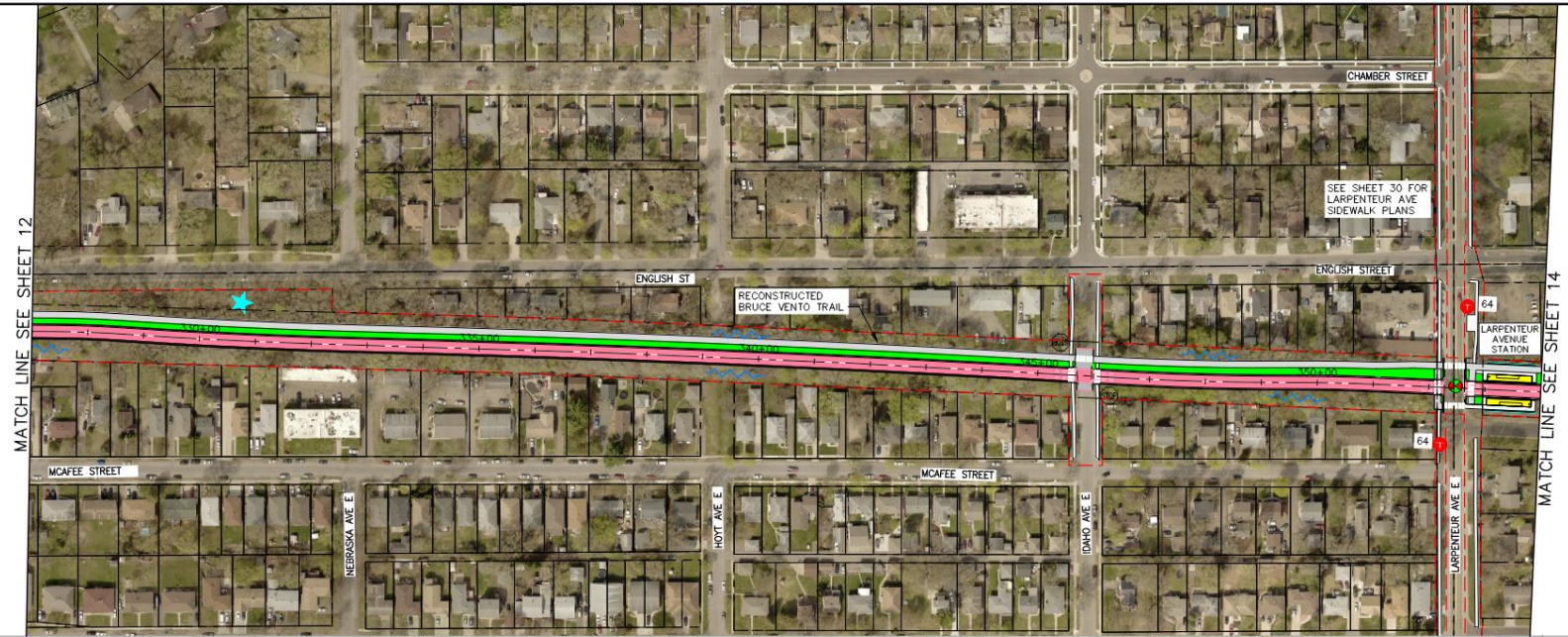


DRAFT-WORK IN PROCESS

SHEET NO.
9
OF
83





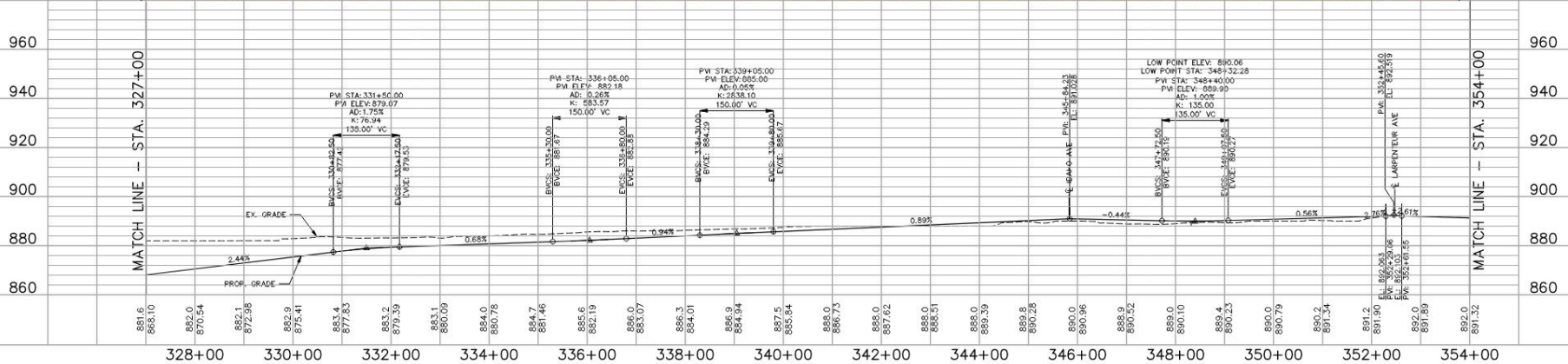


MATCH LINE SEE SHEET 12

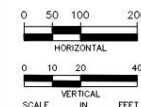
MATCH LINE SEE SHEET 14

MATCH LINE - STA. 327+00

MATCH LINE - STA. 354+00



RUSH LINE BRT PROJECT
15% PLANS - 03/01/2020



Ramsey County Rail Right-of-way Design Guide

- Goal:
 - Develop a safe dedicated guideway and shared-use trail within the Ramsey County rail right-of-way that fits in with the surrounding landscape and reflects relevant user, stakeholder and public guidance.
- Created using public input from extensive engagement efforts in 2019 and the pre-project development study.



Ramsey County Rail Right-of-way Design Guide

- Published April 2020 (available on rushline.org).
- Will inform design as it advances over next few years.



Example of a graphic from the Ramsey County Rail Right-of-way Design Guide

Next Steps

Timeframe	Milestone
December 2020	Environmental Assessment (based on 15% plans) published for public comment.
Spring 2021	Environmental decision and project transition to Metropolitan Council.
2021-2023	Advanced station area planning.
2021-2024	Final engineering.
2024-2026	Construction.
2026	BRT service begins.

Request for Support of 15 Percent Plans

- At this key milestone, Ramsey County is requesting Saint Paul and other municipalities along the line, as the agencies with local jurisdiction, provide a resolution of support for the 15 percent plans.
- Saint Paul will have additional opportunities to provide comments during the Environmental Assessment public comment period anticipated to begin December of 2020 and on the subsequent 30%, 60% and 90% design plans prior to construction in 2024.



Thank you!



rushline.org



facebook.com/rushline



info@rushline.org



[@rushlinetransit](https://twitter.com/rushlinetransit)



651-266-2760