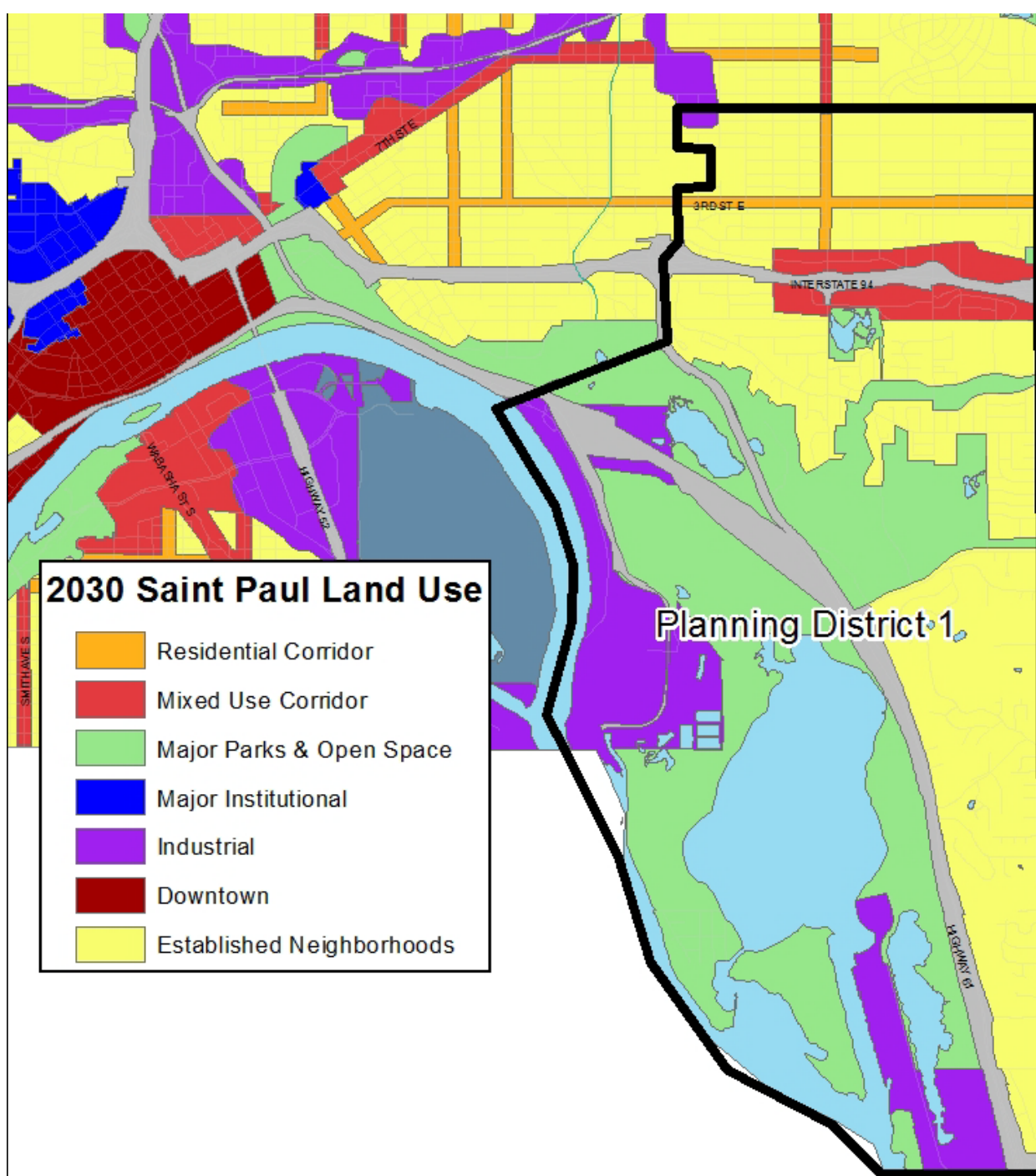




DISTRICT 1 COMMUNITY PLAN

Draft for Planning Commission Review

2/19/2016



Community Engagement Process

- Annual series of listening sessions
- Hot topics meetings (e.g. Totem Town or rec center re-programming)
- 2 surveys
- 1-on-1 conversations at District offices and community events

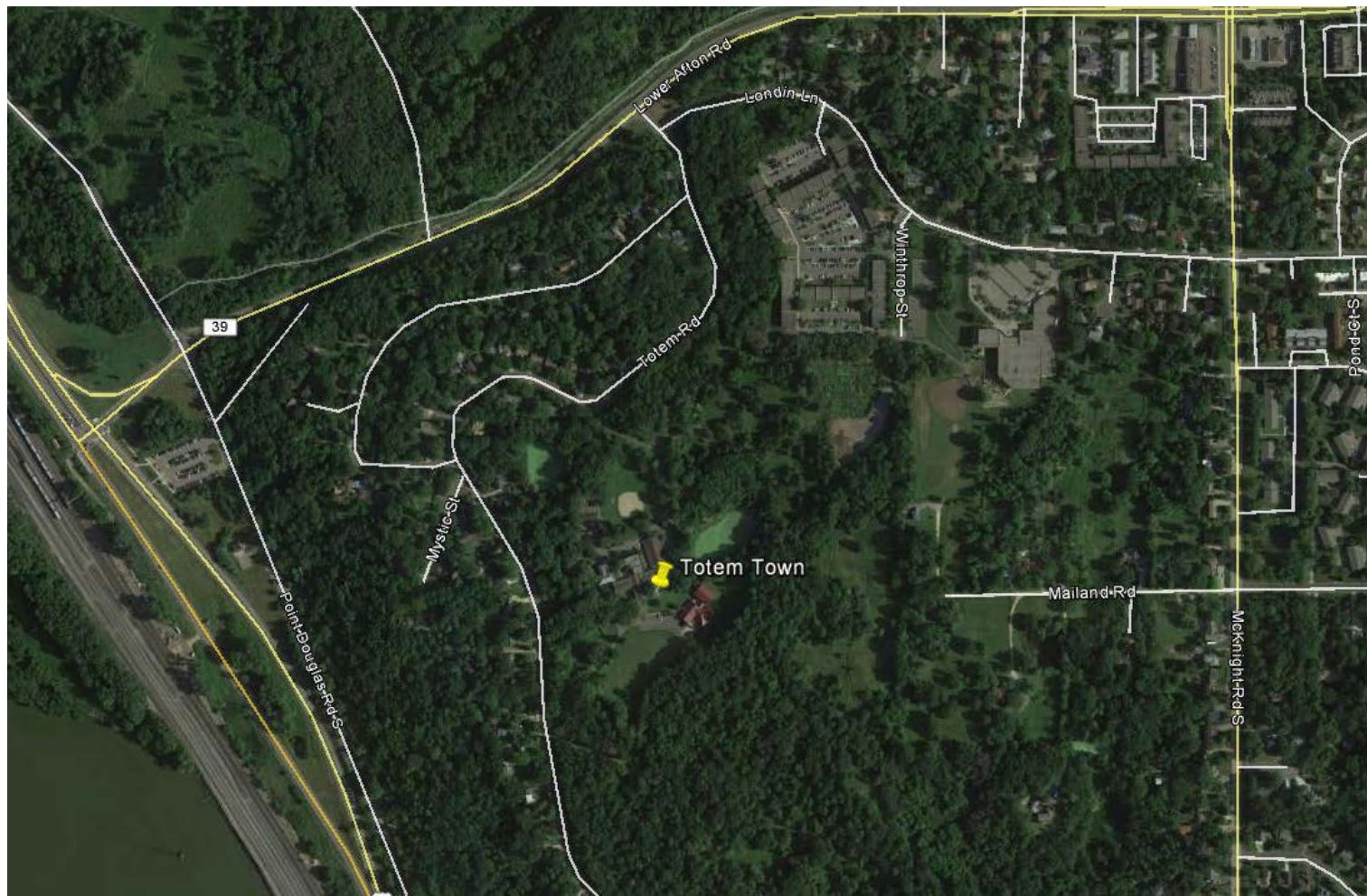


Notable Strategies

- Use Gateway Corridor to leverage high-density TOD (LU1)
- Support redevelopment of Sun Ray, including implementing traditional street grid (LU1.4)
- Explore creating a River-Dependent Industrial zoning district
- Perform a housing conditions inventory, update regularly (H2.1)
- Support efforts to improve and consolidate waste management service

Proposed Amendments (pre-PH)

- Consider Totem Town development moratorium



Proposed Amendments (pre-PH)

- Support redesign of Ruth Street's I-94 interchange



NPC Recommendation



- Make specified amendments to the draft plan
- Release amended draft for public review
- Schedule a public hearing for April 1