

WELCOME!

Please write questions on forms for Q&A later



The Most Livable
City in America

REIMAGINE THE RAILWAY:

Studying new uses for the Ford Spur

Open House #3

March 1, 2018

6:00 – 6:30 Open House

6:30 – 7:00 Presentation and Q&A

7:00 – 7:30 Open House



Kimley»Horn



Ford Spur Multimodal Corridor


Downtown Saint Paul

Five miles of right-of-way between downtown Saint Paul and the 135-acre Ford Site



REIMAGINE THE RAILWAY: **Studying new uses for the Ford Spur**

History and Potential of Spur

- Built to serve Ford Motor Company Twin Cities Assembly Plant
- Owned by Canadian Pacific Railway
- No significant rail activity since plant closed (2011)
- New use of the spur could:
 - Expand transportation options
 - Provide a recreation asset
 - Support Ford Site redevelopment
 - Improve neighborhood connections



Purpose and Funding

- Study began early 2017 using Federal funding, City match, and donations from East Metro Strong and Ford Motor Company Fund
 - Examine issues/opportunities for walking and bicycling and develop preliminary designs
 - Consider that public transit may be a future use in the corridor



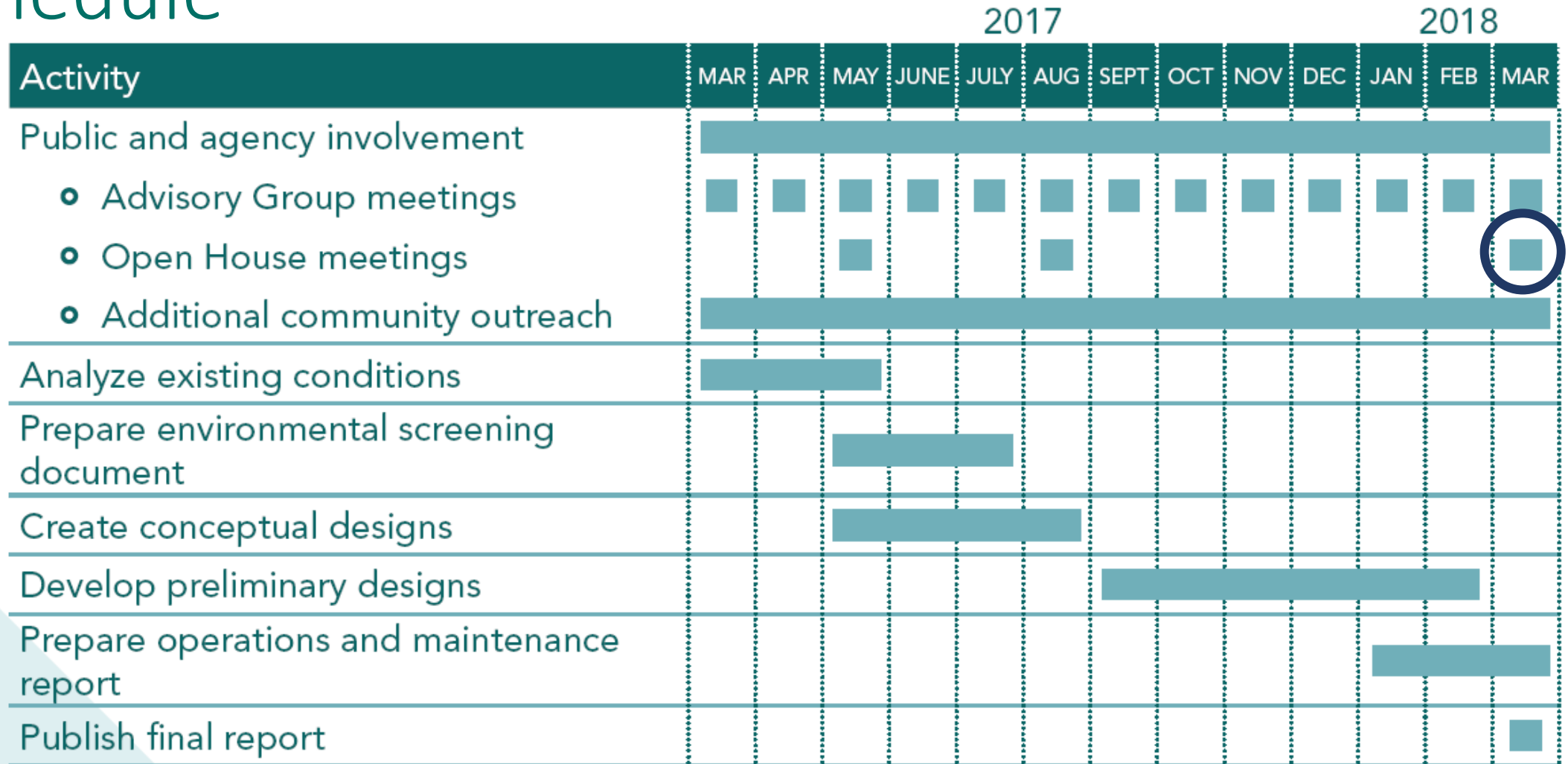


Midtown Greenway, Minneapolis



Dequindre Cut, Detroit

Schedule



WE ARE
HERE

Relationship to Riverview Corridor Study



- Downtown Saint Paul to MOA/MSP
- LPA of Modern Streetcar on West 7th/Hwy 5
- Transit-focused, working on route and mode

(This study)

Reimagine the Railway

- Shorter segment, from Ford Site to east end of St. Clair
- Right-of-way defined
- Trail-focused, working on pedestrian/bike facilities with space for transit if proposed in ROW



REIMAGINE THE RAILWAY: **Studying new uses for the Ford Spur**

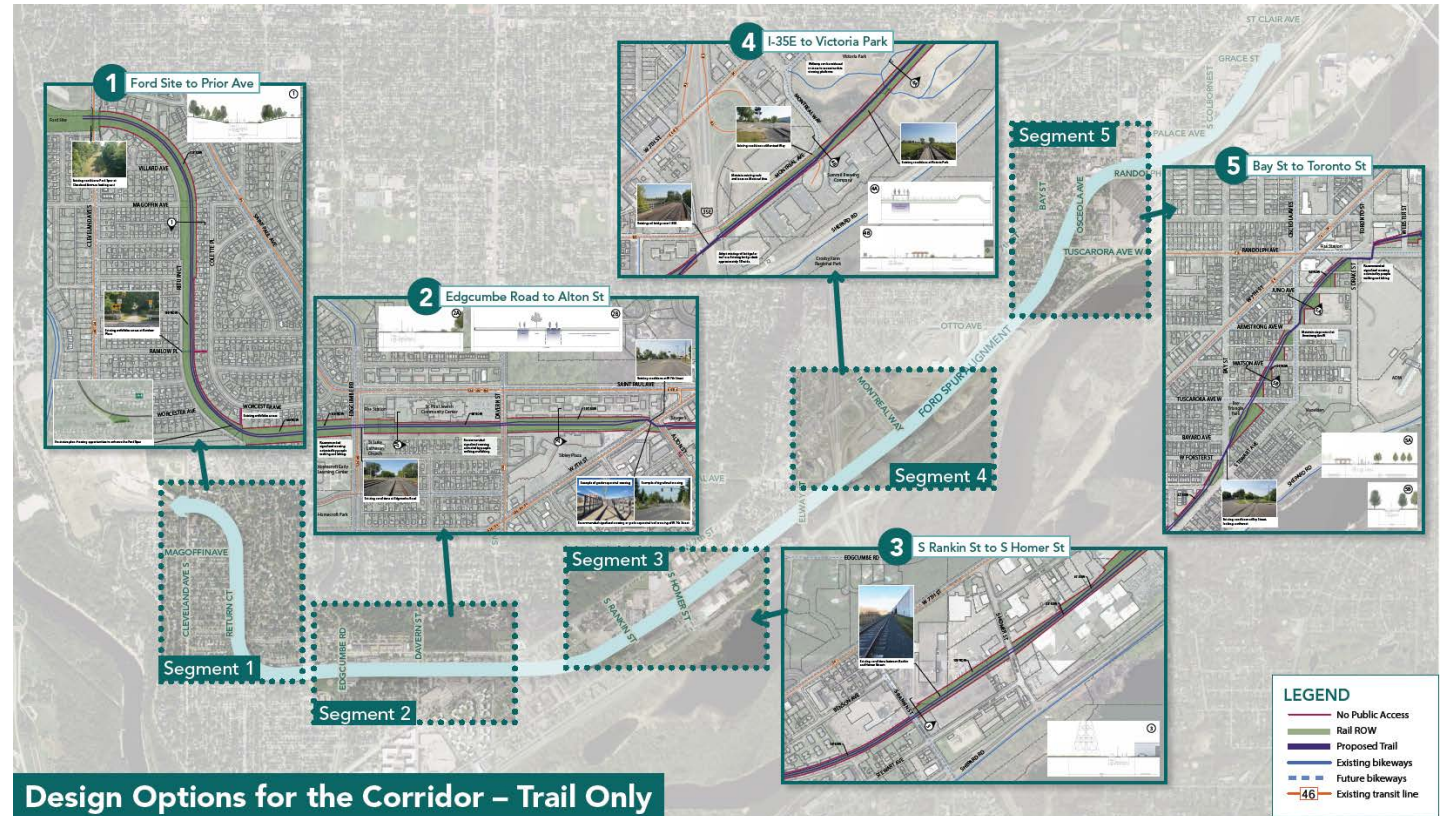
What's Around the Room

- Background Info
 - Overview and Purpose
 - Schedule
 - Goals
- Existing Conditions
- Connections to Downtown St Paul
- Design Options
- Riverview Corridor
 - Kevin Roggenbuck, RCRRA
- Next Steps
- Excitement/Concern Station
- Coloring Table for Kids (or anybody else who'd like to)



What's Around the Room

- Design Options
 - Trail Only
 - Trail with Transit
 - Not choosing better of the two
- Staff will help with questions and record concerns



What's Around the Room

- Design Options
 - Trail Only
 - Trail with Transit
 - Not choosing better of the two
- Staff will help with questions and record concerns



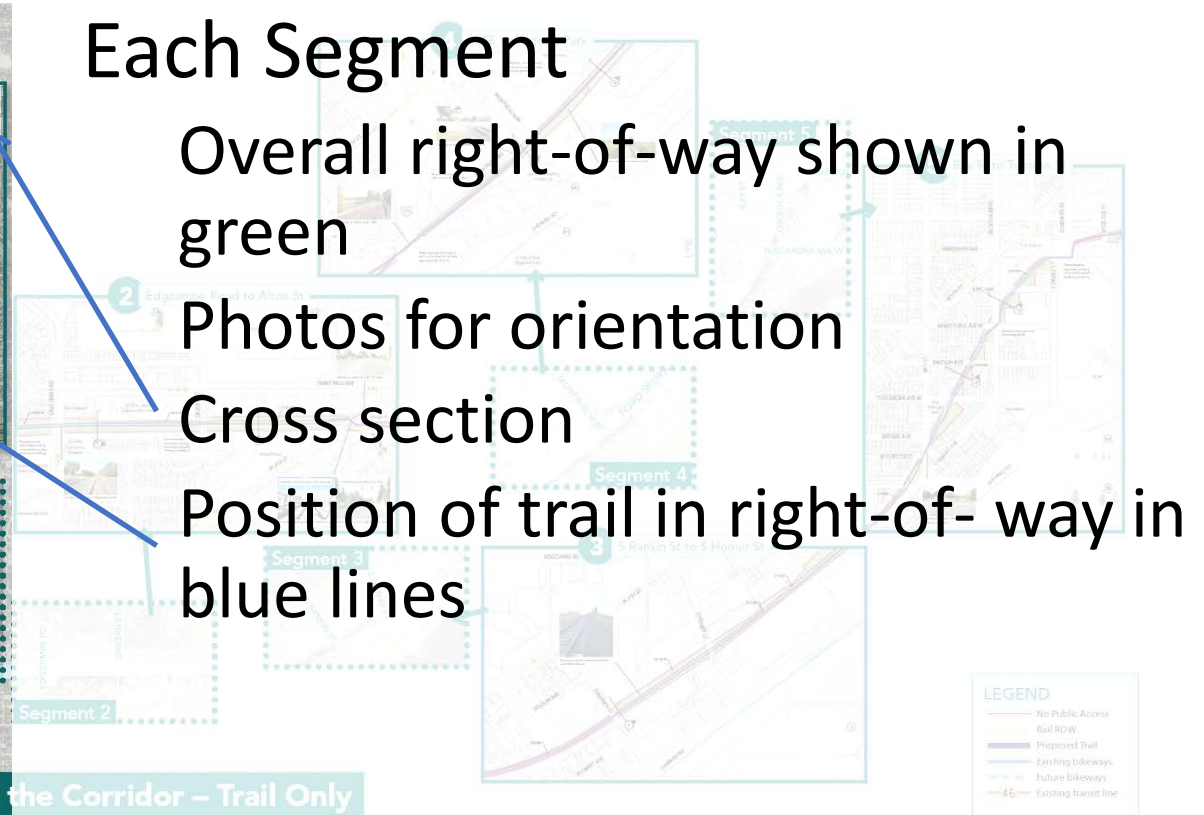
Each Segment

Overall right-of-way shown in green

Photos for orientation

Cross section

Position of trail in right-of-way in blue lines



THANK YOU!

Mike Richardson, City Planner

Phone: 651.266.6621

Email: mike.richardson@ci.stpaul.mn.us

www.stpaul.gov/FordSpurStudy



REIMAGINE THE RAILWAY: **Studying new uses for the Ford Spur**

QUESTIONS

- **If you haven't submitted a question and you want to, please raise your hand and we'll bring you a form.**
- **Staff will collect and give to moderators (D9 rep)**
- **15-ish minutes, then open house**

