

Project Overview and Purpose of Study

PROJECT OVERVIEW

- ▶ The “Ford Spur” originates just southwest of downtown St. Paul, generally parallel to West 7th Street, then north to the Ford site (5 miles)
- ▶ City of Saint Paul received a U.S. TIGER VI Planning Grant to study the potential of the Ford Spur as a multimodal corridor

PURPOSE OF STUDY

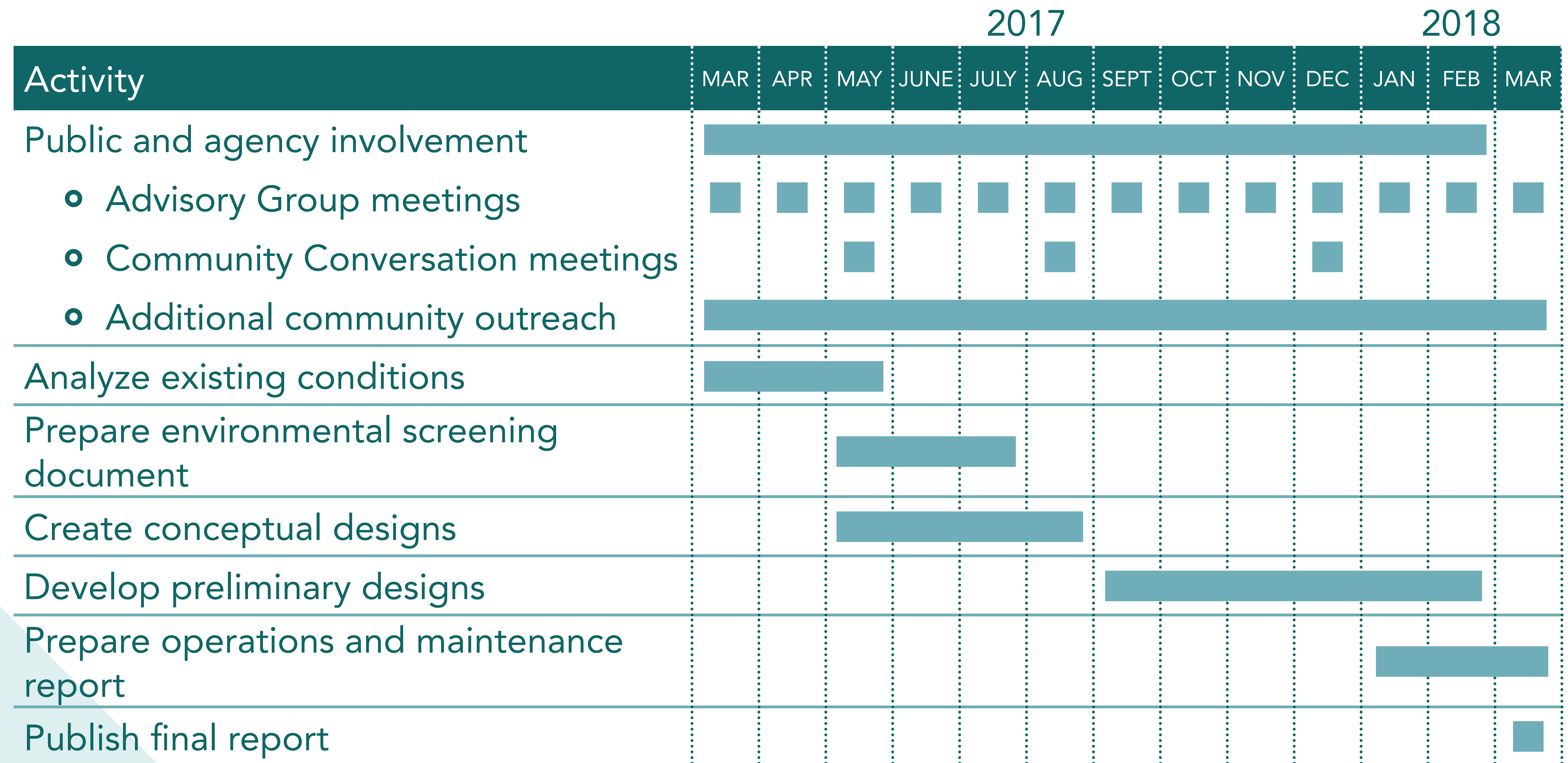
- ▶ To reimagine the potential use of a 5-mile railway corridor for pedestrian and bicycle use
- ▶ The study will also explore the corridor’s potential utilization for public transit



REIMAGINE THE RAILWAY: **Studying new uses for the Ford Spur**

Stay connected at
www.stpaul.gov/FordSpurStudy

Study Components and Schedule



REIMAGINE THE RAILWAY: **Studying new uses for the Ford Spur**

Stay connected at
www.stpaul.gov/FordSpurStudy

Ford Spur Existing Conditions



Ford Spur near Homecroft



Ford Spur at Edgumbe



Ford Spur at West 7th



Ford Spur at Homer



Ford Spur over Elway



Ford Spur at Victoria Park



Ford Spur at Watson



Ford Spur Trestle near Colburne



REIMAGINE THE RAILWAY: **Studying new uses for the Ford Spur**

Stay connected at
www.stpaul.gov/FordSpurStudy

Ford Spur Design Overview

Design concepts have been developed for four segments of the Ford Spur, as shown on this map. These segments have different right of way widths and different neighborhood character.

The Riverview Transit Study is still in progress. The Riverview Study will recommend whether to locate proposed transit in the Ford Spur. Because a decision has not yet been made, each segment has two sets of designs:

- ▶ One that shows the design of a trail on the Ford Spur
- ▶ One that shows how a trail and transit could fit in the Ford Spur



As you review the designs: tell us what you think! Do you like what you see? Do you have ideas or concerns? How could the Ford Spur be a good neighbor?

- Adequate ROW width
- Narrow ROW width (<70')
- Very narrow ROW width (<60')

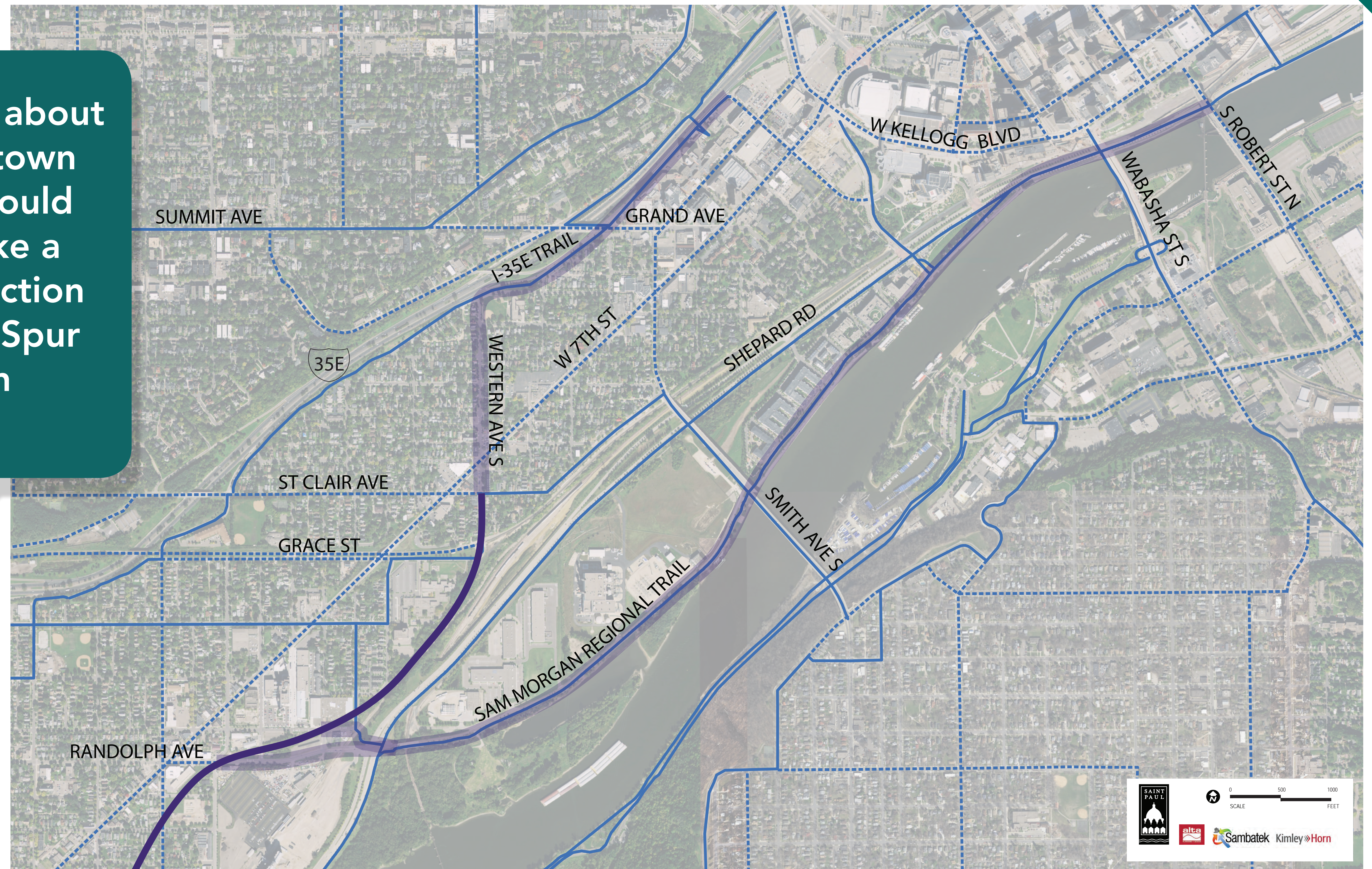


REIMAGINE THE RAILWAY: **Studying new uses for the Ford Spur**

Stay connected at
www.stpaul.gov/FordSpurStudy

Connections to Downtown Saint Paul

The Ford Spur ends about a mile from Downtown Saint Paul. How would you prefer to make a bike or walk connection between the Ford Spur and Downtown Saint Paul?



— Existing Bikeways
- - - Future Bikeways

— Ford Spur Alignment
Potential Connection to Downtown St. Paul



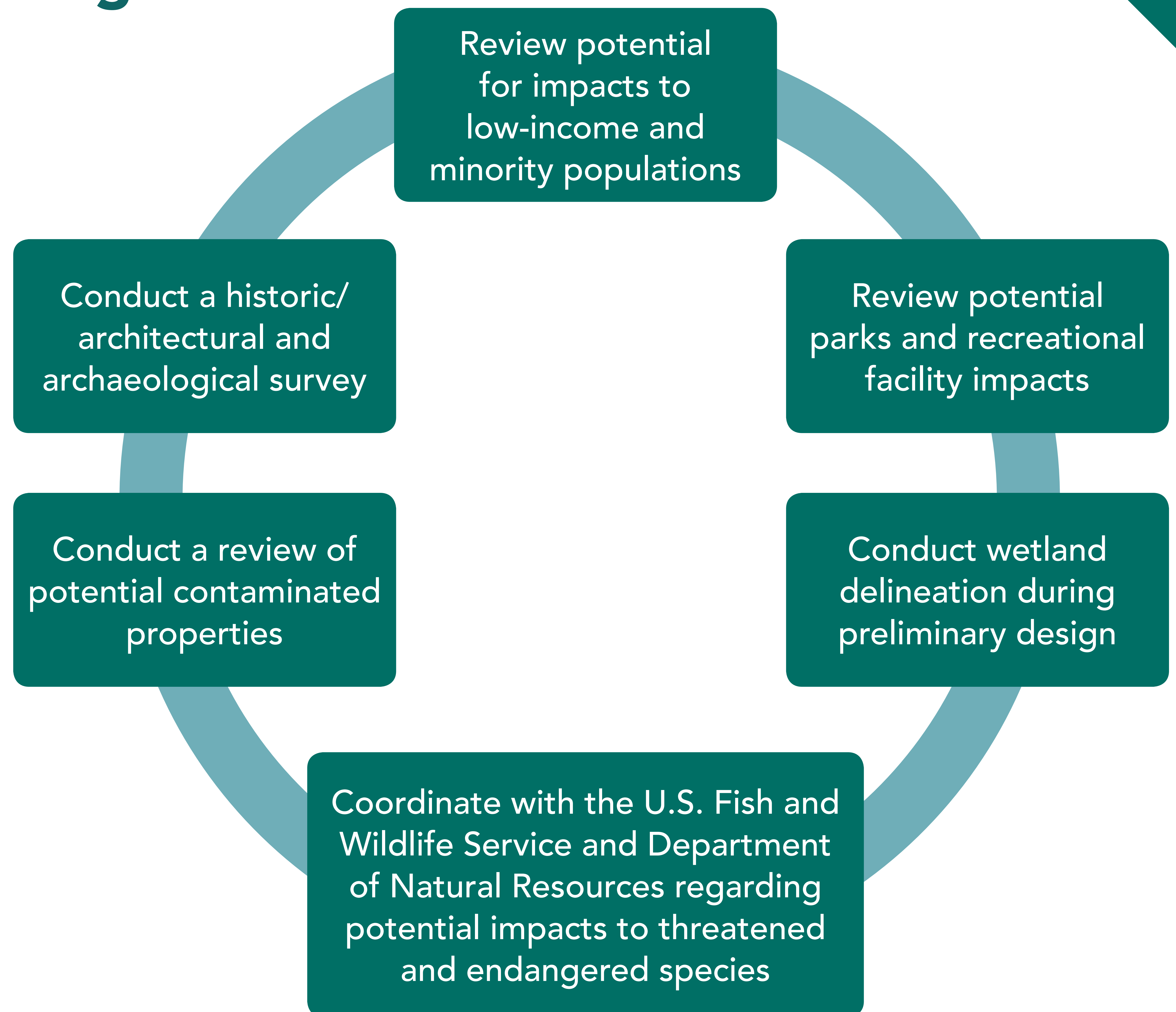
REIMAGINE THE RAILWAY: **Studying new uses for the Ford Spur**

Stay connected at
www.stpaul.gov/FordSpurStudy

Environmental Screening

An environmental screening document is a high-level report that calls out things like potential drainage concerns, endangered species, contamination, and historic properties.

It did not identify any potential impacts that could not be mitigated. As concepts are developed, the appropriate level of environmental documentation will be identified and further analysis will be conducted, which would likely include:



Study Goals

Connections

Strengthen transportation and **community connections along the diverse neighborhoods along the Ford Spur and extensions, such as downtown Saint Paul and the Ford Site**

Complement the regional transportation system and **connect to existing and future walk, bike, and transit facilities along the Ford Spur corridor**

Allow future development on the Ford Site to be served with a **variety of safe transportation choices**

Process

Coordinate the goals and needs of **related studies and stakeholders**

Engage a broad cross-section of community members and stakeholders to **build a common vision and support for the future of the Ford Spur**

Demonstrate innovation in expediting the process of **re-purposing the Ford Spur**

Design

Foster economic development and place-making along the Ford Spur corridor

Develop the Ford Spur into a neighborhood asset that **complements and enhances existing and future land use along the Ford Spur**

Develop walking and biking trail designs that are **attractive, healthy, efficient, comfortable, safe, and convenient for people of all ages and abilities**



REIMAGINE THE RAILWAY: **Studying new uses for the Ford Spur**

Stay connected at www.stpaul.gov/FordSpurStudy