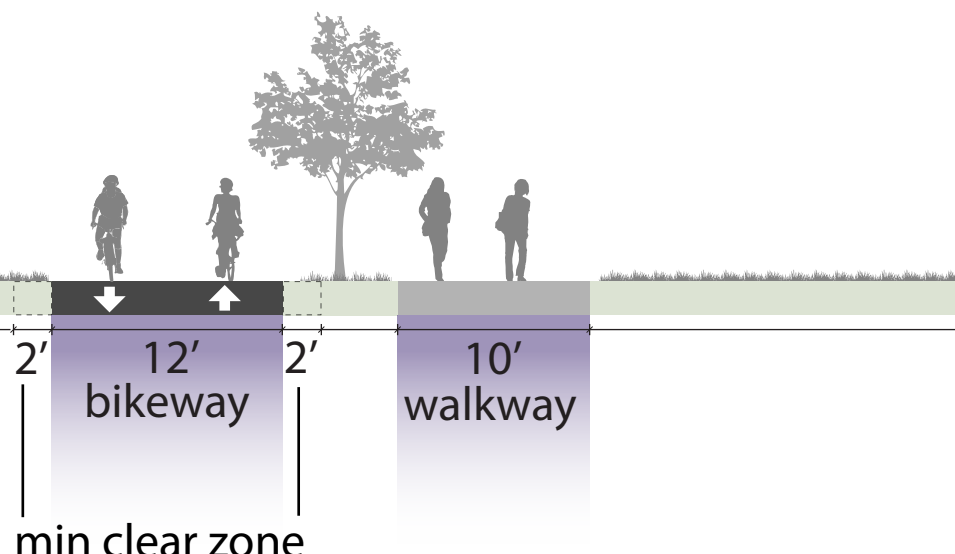


1

space for future uses such as green infrastructure, transportation, park, or other options

140' ROW



Ford Site

CLEVELAND AVE S

VILLARD AVE

123' ROW

1

RETURN CT

100' ROW

RAMLOW PL

COLETTE PL

84

SAINT PAUL AVE

46 134

Existing walk/bike access

WORCESTER AVE

WORCESTER AVE

Existing walk/bike access

144' ROW

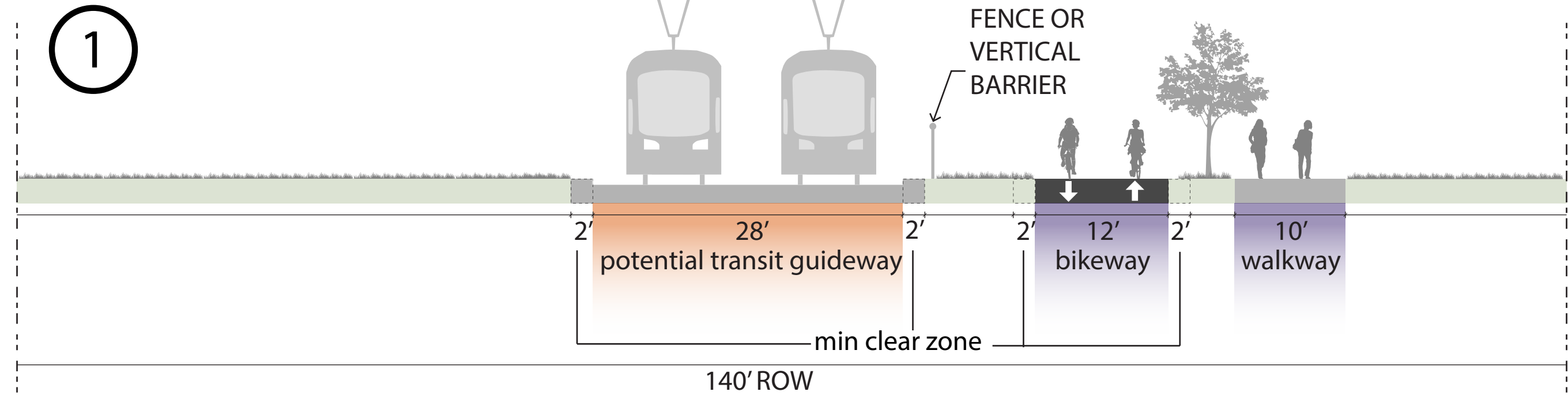
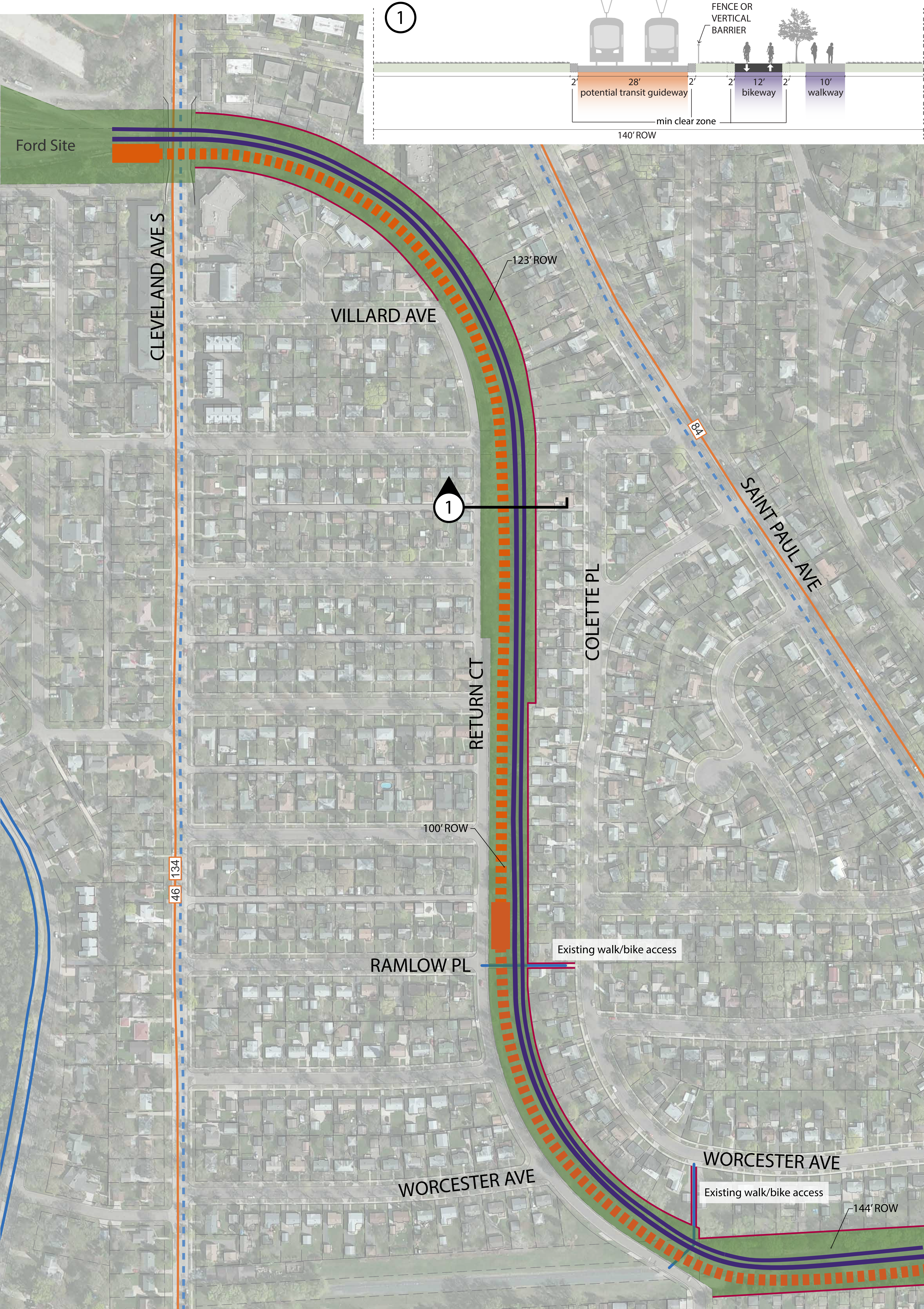
Segment One: Ford Site to Prior Ave

Ford Spur Corridor Alignment Concepts

Trail Only
August 29, 2017 Open House

- No Public Access
- Rail ROW
- Proposed Trail
- Existing bikeways
- Future bikeways
- Existing transit line

0 100 200
SCALE
FEET



Segment One: Ford Site to Prior Ave
Ford Spur Corridor Alignment Concepts
Transit and Trail
August 29, 2017 Open House

- No Public Access
- Rail ROW
- Proposed Trail
- Potential Transit
- Existing bikeways
- Future bikeways
- Existing transit line

2A

space for future uses such as green infrastructure, transportation, park, or other options

12' bikeway

10' walkway

98' ROW

2B

space for future uses such as green infrastructure, transportation, park, or other options

12' bikeway

10' walkway

130' ROW

EDGCUMBE RD

Fire Station

St. Paul Jewish Community Center

134 46 84

98' ROW

DAVERN ST

SAINT PAUL AVE

46 84

Signalized crossing activated by people walking and biking.

Kruger's

ALTON ST

46

2A

St Luke Lutheran Church

Signalized crossing activated by people walking and biking.

Homecroft Early Learning Center

Homecroft Park

134 46

134

2B

Sibley Plaza

W 7TH ST

436 84 54

436 54

Tell Us: Would you prefer an at-grade or grade-separated trail crossing of W 7th St?



Segment Two: Edgcumbe Rd to Alton St

Ford Spur Corridor Alignment Concepts

Trail Only

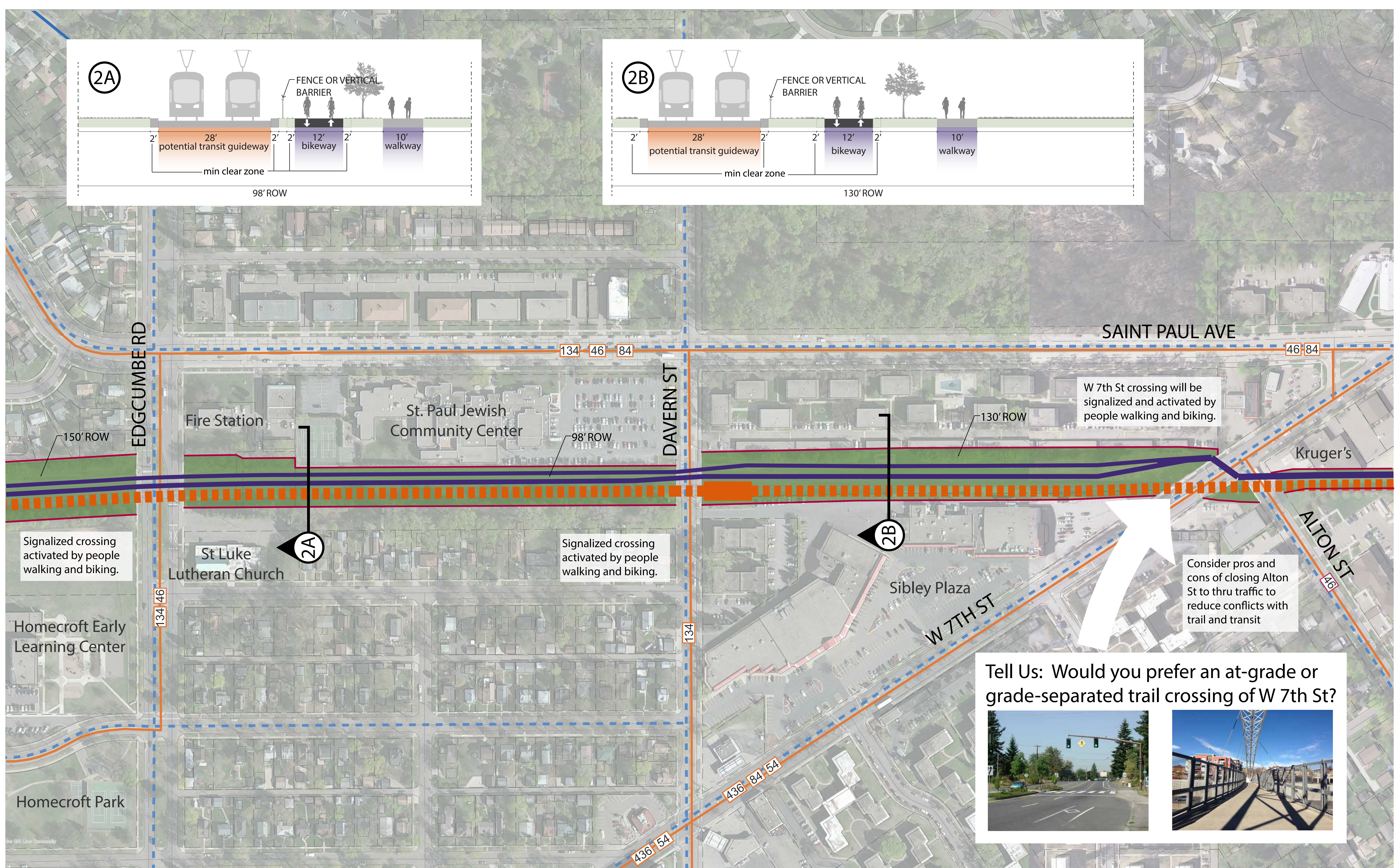
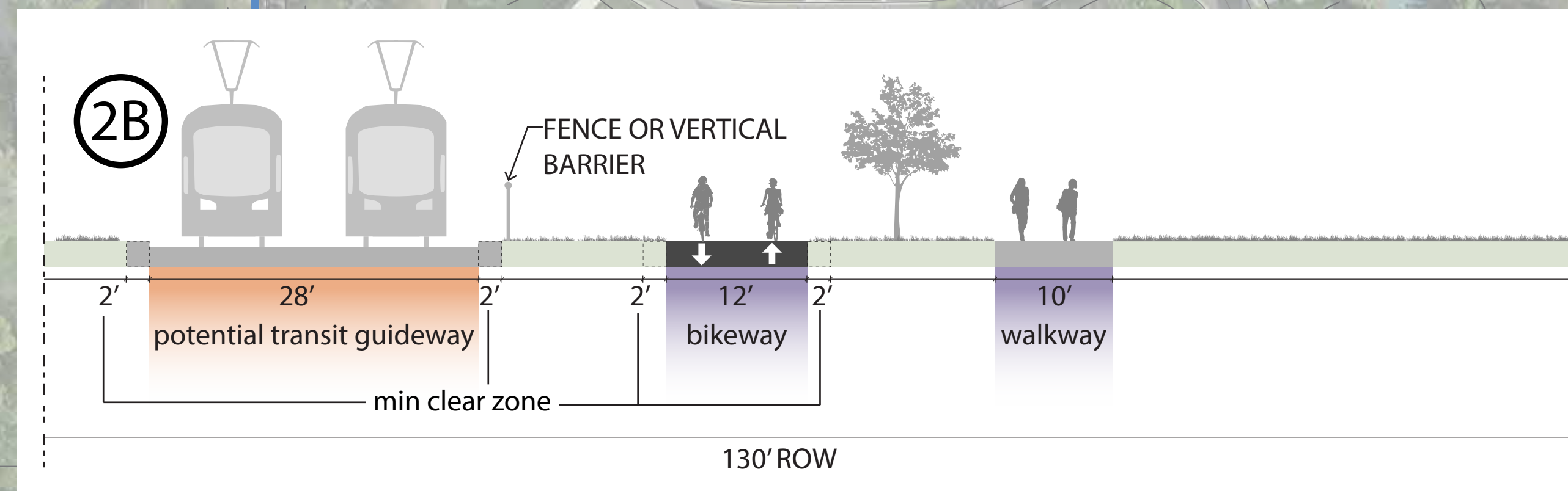
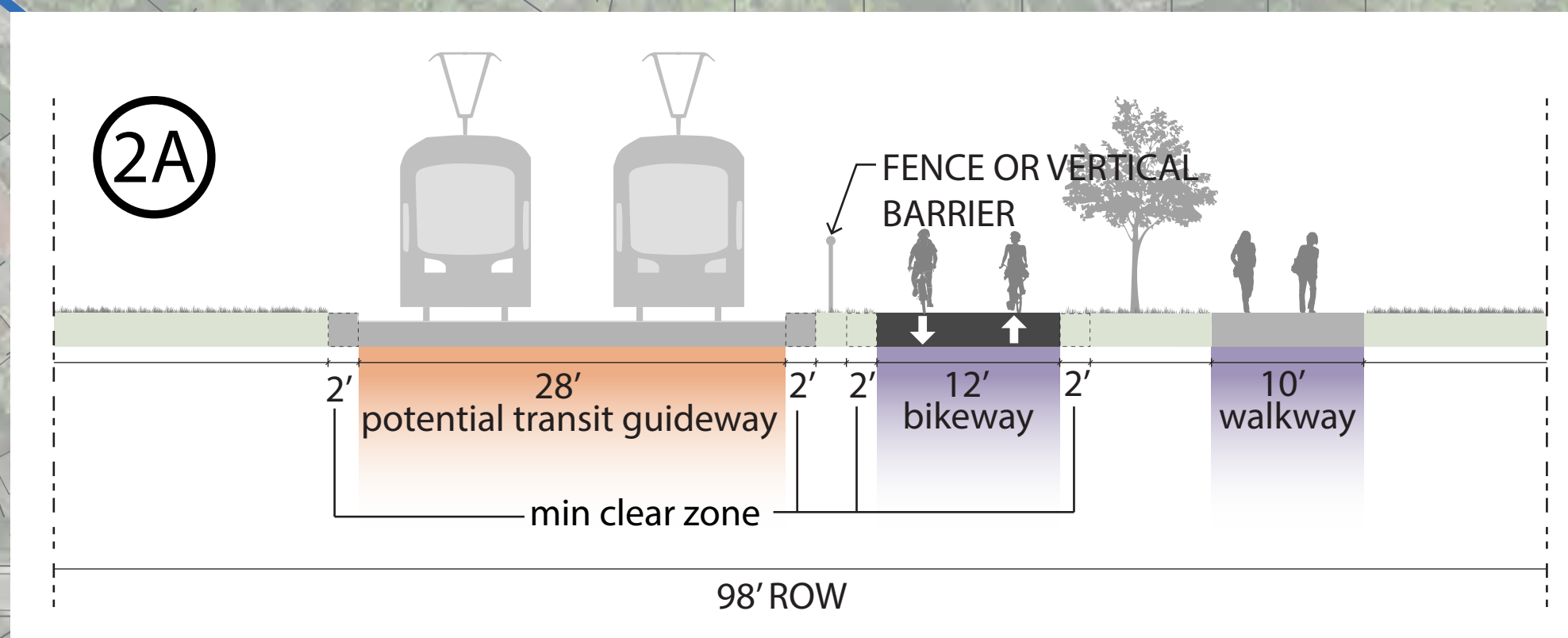
August 29, 2017 Open House

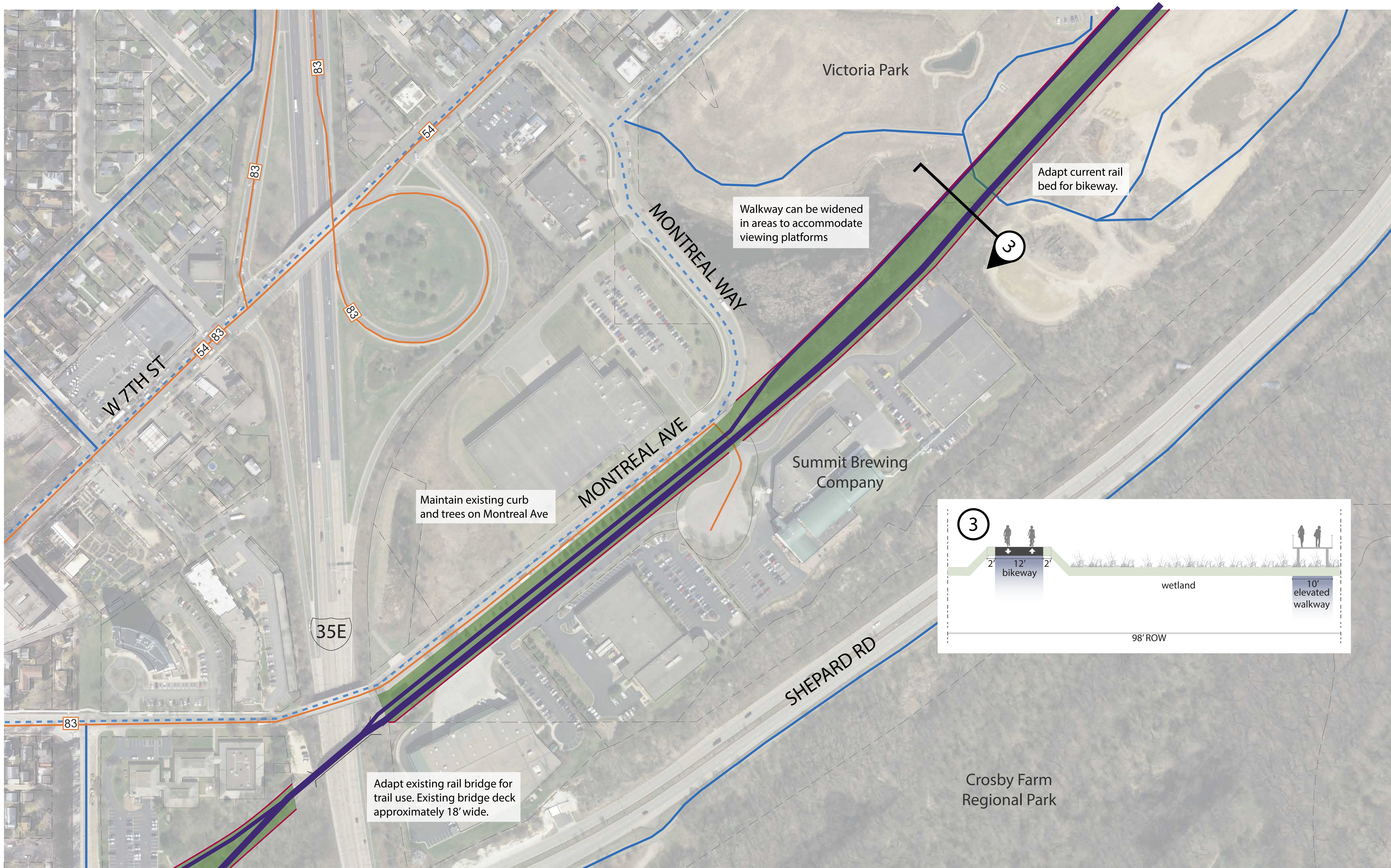
- No Public Access
- Rail ROW
- Proposed Trail

- Existing bikeways
- Future bikeways
- Existing transit line



0 100 200
SCALE FEET





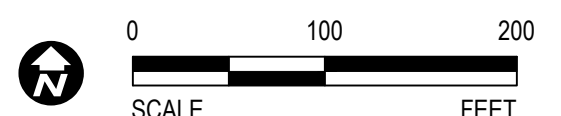
Segment Three: I-35E to Victoria Park

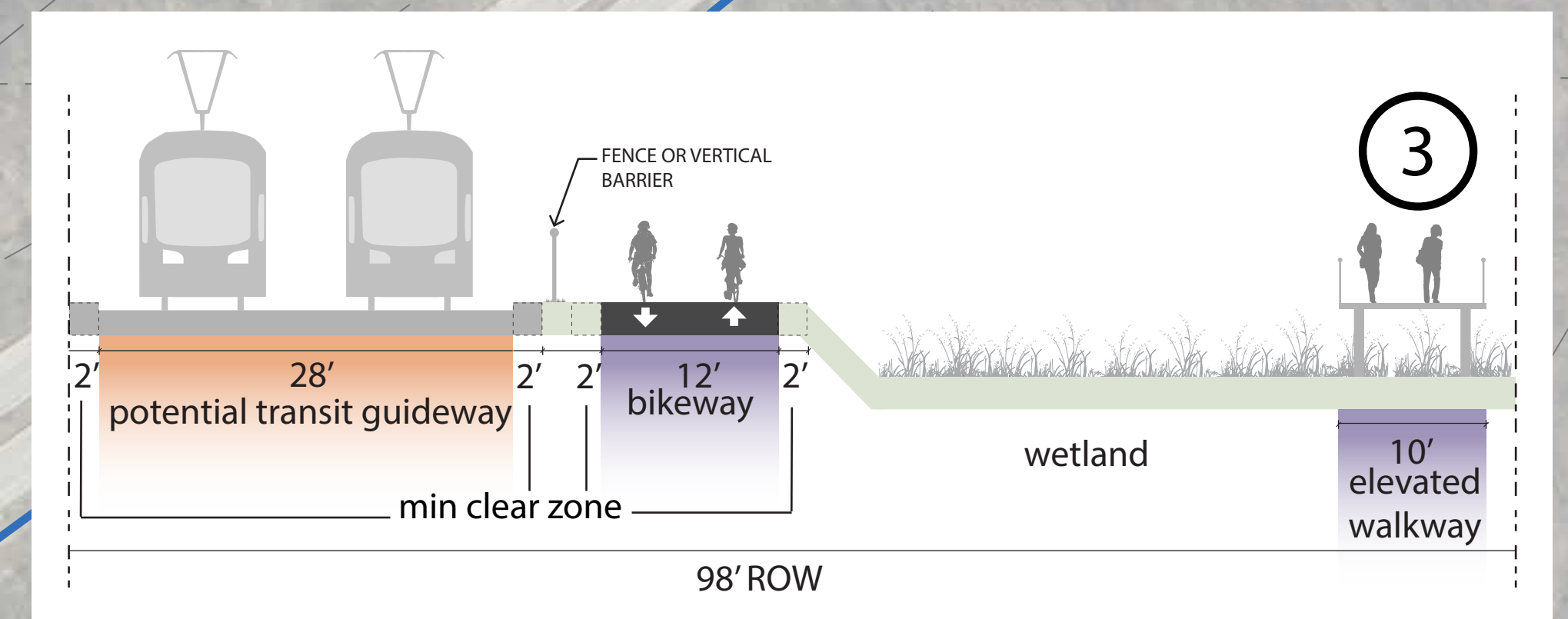
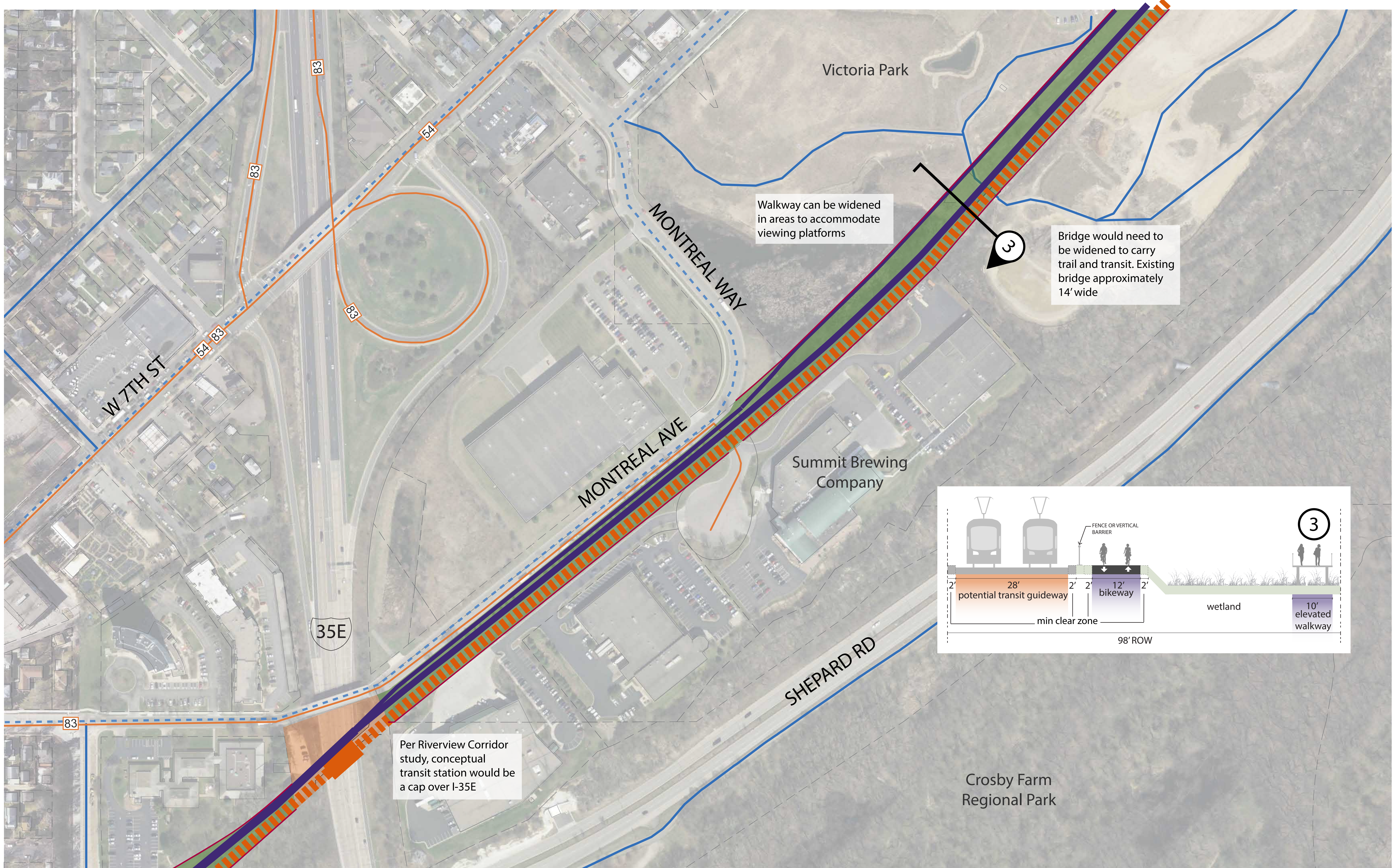
Ford Spur Corridor Alignment Concepts

Trail Only

August 29, 2017 Open House

- | | |
|--|---|
| — No Public Access | — Existing bikeways |
| — Rail ROW | - - - Future bikeways |
| — Proposed Trail | 83 Existing transit line |





Segment Three: I-35E to Victoria Park Ford Spur Alignment Concepts Transit and Trail August 29, 2017 Open House

- No Public Access
- Rail ROW
- Proposed Trail
- Potential Transit
- Existing bikeways
- Future bikeways
- Existing transit line

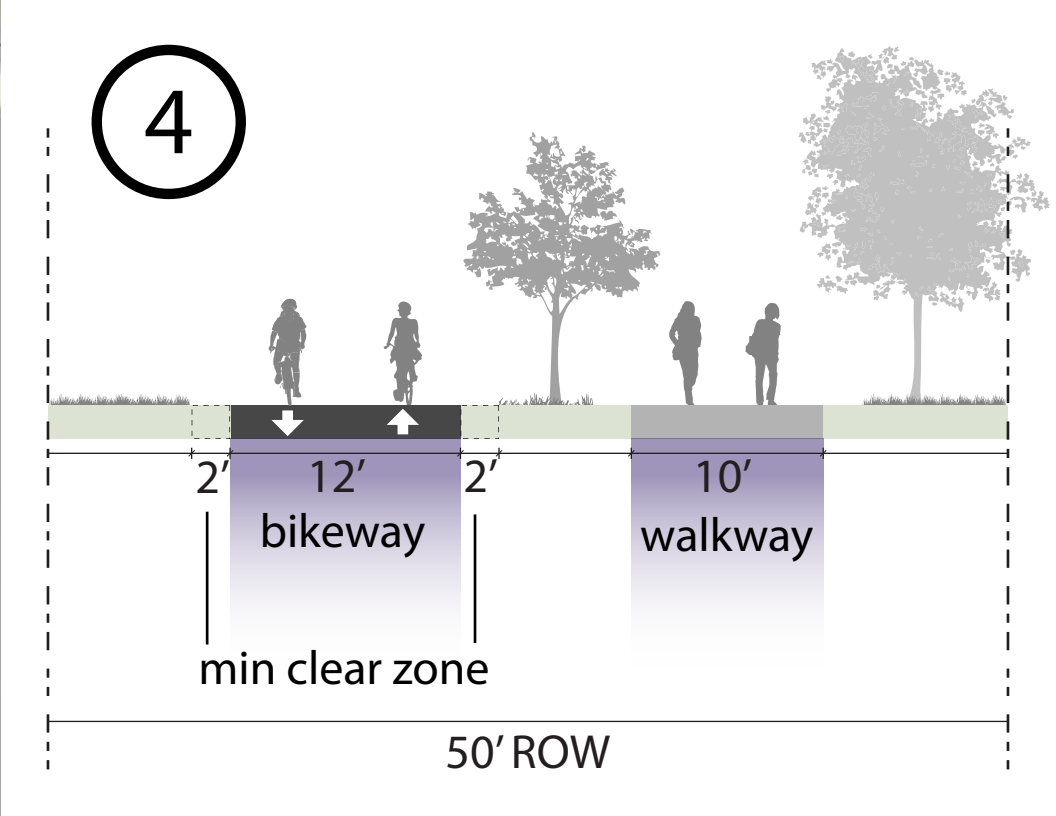


Signalized crossing
activated by people
walking and biking

Further study needed to
determine connection to
Downtown Saint Paul.
Options include:
-Connect to the Samuel
Morgan Regional Trail via
Randolph Ave.
-Connect to the Samuel
Morgan Regional Trail via the
Ford Spur and widened
sidewalk connection at James
Ave and Duke St.
-Follow the Ford Spur to its
endpoint at Grace St and use
the Western Ave bikeway to
connect to the I-35E trail.

Maintain stop control at
Armstrong Ave W

4





Segment Four: Bay St to Toronto St
Ford Spur Alignment Concepts
Transit and Trail
August 29, 2017 Open House

- No Public Access
- Rail ROW
- Proposed Trail
- Potential Transit
- Existing bikeways
- Future bikeways
- Existing transit line