

SAINT PAUL FOR ALL

2040 COMPREHENSIVE PLAN

Lucy Thompson
Saint Paul PED

Planning Commission
March 22, 2019



Saint Paul Comprehensive Plan 2040

PLAN CHAPTERS

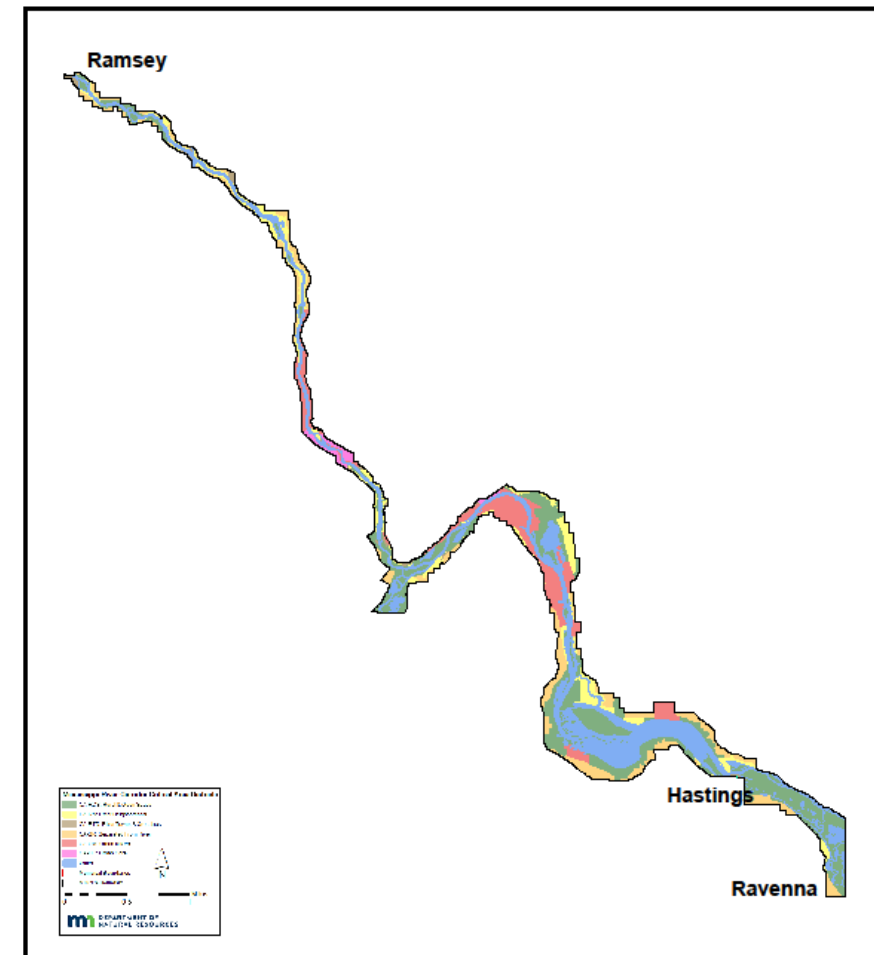
- Land Use
- Transportation
- Parks, Recreation and Open Space
- Housing
- Water Resources Management
- Heritage and Cultural Preservation
- Mississippi River Corridor Critical Area



Mississippi River Corridor Critical Area (MRCCA)

- Land corridor along the Mississippi River in the 7-county Metro Area
- Covers 72 miles, 54,000 acres of surrounding land in 30 jurisdictions – from Ramsey to Hastings
- Saint Paul has 17 miles of river, 26 miles of shoreline
- Special land planning requirements, land development regulations implemented through local MRCCA plans, ordinances
- Balance natural systems, urban development, recreation, commerce
- Governed by MN Rules Chapter 6106, adopted in 2016; previously governed by Executive Order 79-19
- Coterminous with Mississippi National River and Recreation Area (MNRRA)

Mississippi River Corridor Critical Area (MRCCA)
District Map



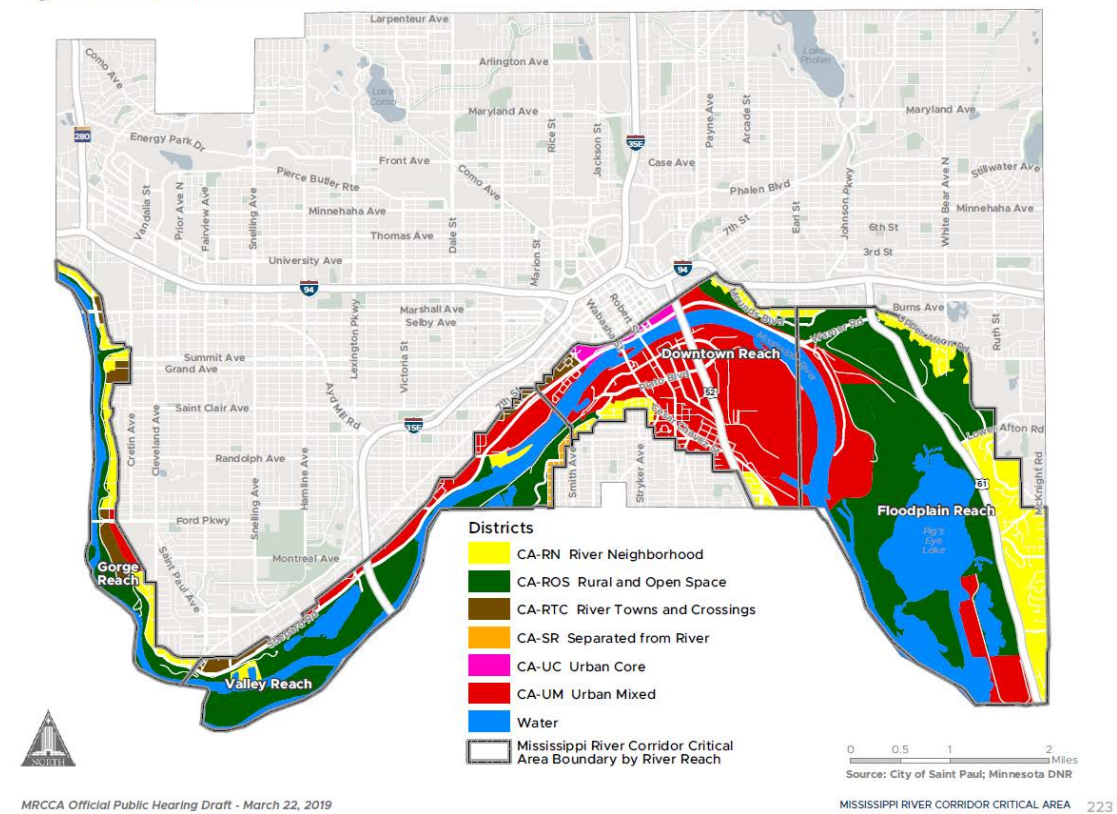
March 19, 2019



MRCCA Districts in Saint Paul

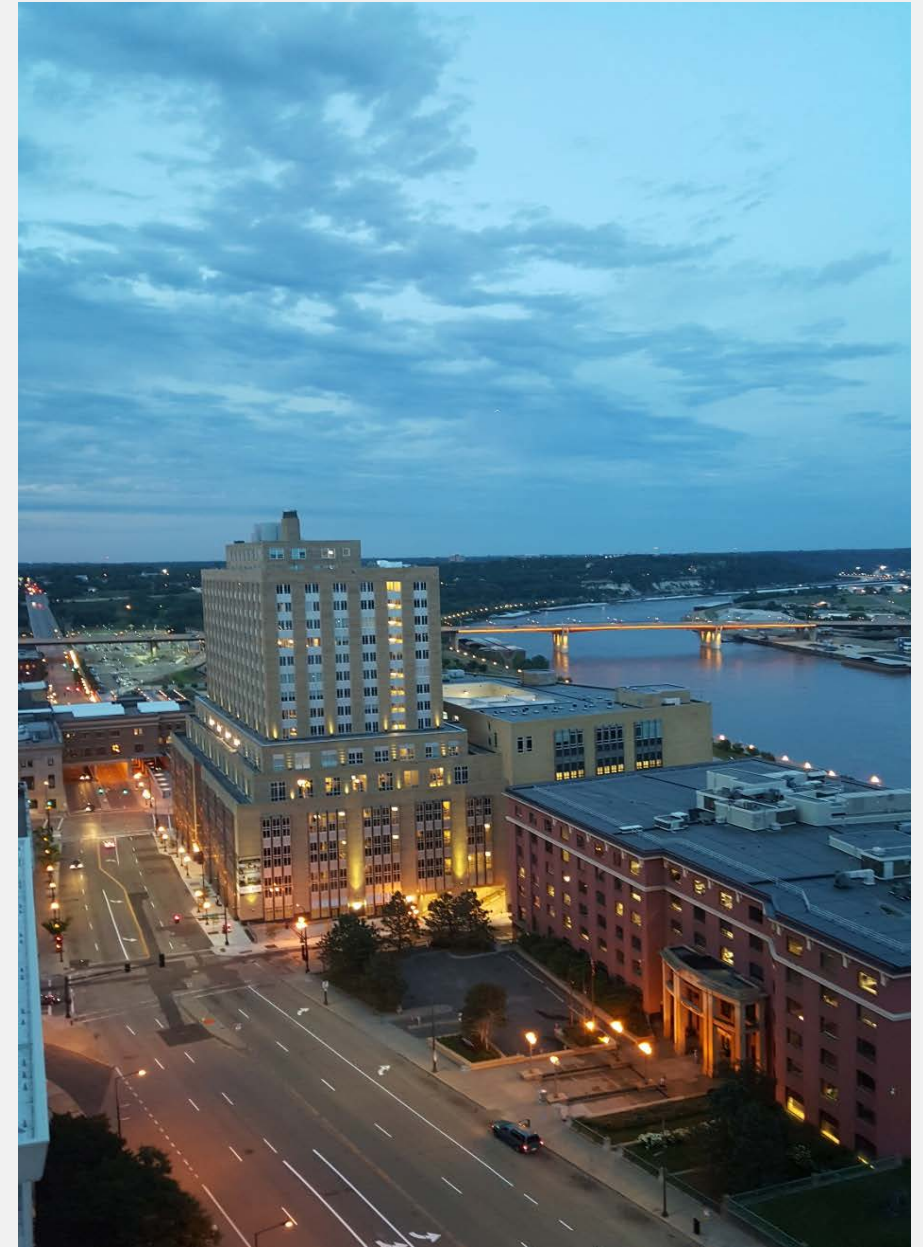
- 6 districts set by MN Rules
- Land use regulated by underlying zoning, not DNR
- MRCCA districts regulate height, river and bluff setback
- Mostly consistent with underlying zoning; some exceptions regarding height (e.g. Ford, West Side Flats, Shepard Davern)

Figure 1: MRCCA Districts in Saint Paul



Planning Context

- *Saint Paul on the Mississippi Development Framework (1997)*
- *Existing Mississippi River Corridor Plan (2002)*
- *Master Plans for Upper Landing Urban Village (2000), West Side Flats Urban Village (2001/2015), Victoria Park Urban Village (2005), Ford (2017)*
- *Great River Passage Master Plan (2013)*
- *River Balcony Master Plan (2017)*



Plan Development

- 3-year rulemaking process led by MnDNR with extensive community and City involvement
- PED staff prepared draft
- Sent to adjacent and affected jurisdictions
- Met with key stakeholders:
 - ✓ DNR
 - ✓ National Park Service
 - ✓ Friends of the Mississippi River
 - ✓ Friends of the Parks and Trails of SP and Ramsey County
 - ✓ Saint Paul Port Authority
- Reviewed by CNPC



MRCCA Chapter

- Current *Mississippi River Corridor Plan* adopted in 2002
- New plan required by MN Rules Chapter 6106
- MN Rules dictate most of content



Required sections:

- Districts
- Primary Conservation Areas
- Public River Corridor Views
- Restoration Priorities
- Surface Water Uses
- Water-Oriented Uses
- Open Space & Recreational Facilities
- Transportation & Public Utilities
- Implementation

MRCCA Goals

- Recognition, celebration, protection of MR
- Protection, enhancement of unique urban ecology of river corridor/valley
- Economically-vibrant working river
- High-quality, sustainable development that enhances natural environment
- Equitable public access, strong connections
- River as backbone of community-building network
- Balance between environmental, natural, economic, cultural, social, physical, recreational, historic, spiritual



MRCCA Chapter Review and Adoption Schedule

- March 22 PC releases draft MRCCA for public review, sets public hearing for April 19, 2019
- April 19 PC holds public hearing
- April 22 Public record closes at 4:30 p.m.
- May 1 CNPC reviews public comments, recommends final changes to PC
- May 17 PC approves MRCCA, forwards to Mayor and City Council

CNPC Recommendation

- Release draft MRCCA for public review
- Set public hearing date of April 19, 2019

