



Ford Site Zoning and Public Realm Master Plan

DRAFT (5-4-2017)
For review by the
Saint Paul Planning Commission

Adoption Date:



Overview Presentation to Saint Paul Planning Commission

May 19, 2017

Saint Paul Ford Site

CREATING THE VISION

REFINING THE VISION

IMPLEMENTING THE VISION

City/Community/
Priorities

Global Model of
Sustainability

Character and
Built Form

Community
Amenities &
Open Space

Economic
Viability

Transport &
Infrastructure

**FORD
REDEVELOPMENT
STUDY:
VISION, GOALS &
5 SCENARIOS**

Sustainable
Redevelopment
Reports

Ford Zoning
Framework Study

Ford Site
Open Space
Guidelines

Fiscal
Impact Analysis

Green
Manufacturing
Reuse Study

**Refined
Vision &
Priorities**

Key Activities

- Zoning & Public Realm Plan
- Jobs Strategy
- Ford Energy Study
- Riverview Corridor Study

A Decade of Public Engagement

- Ford Task Force initiated Jan. 2007
- 45+ meetings with the public and task force
- 1,300+ different people have attended a meeting(s)
- 100+ articles in print, radio and television media
- 3,793 subscribers to the Ford project news email list
- 80+ presentations to business, civic, non-profit groups
- 18 small group meetings in March – April 2017



Why Now?



What is a Zoning and Public Realm Master Plan?

Zoning

- Sets local rules for how land can be developed and the scale and basic design of buildings
- Identifies allowed uses, but not the user

Master Plan

- Provides overarching vision, principles and objectives to guide development.
- Identifies the physical and visual elements of outdoor space including streets & trails, stormwater and open space.

Plan Format & Organization

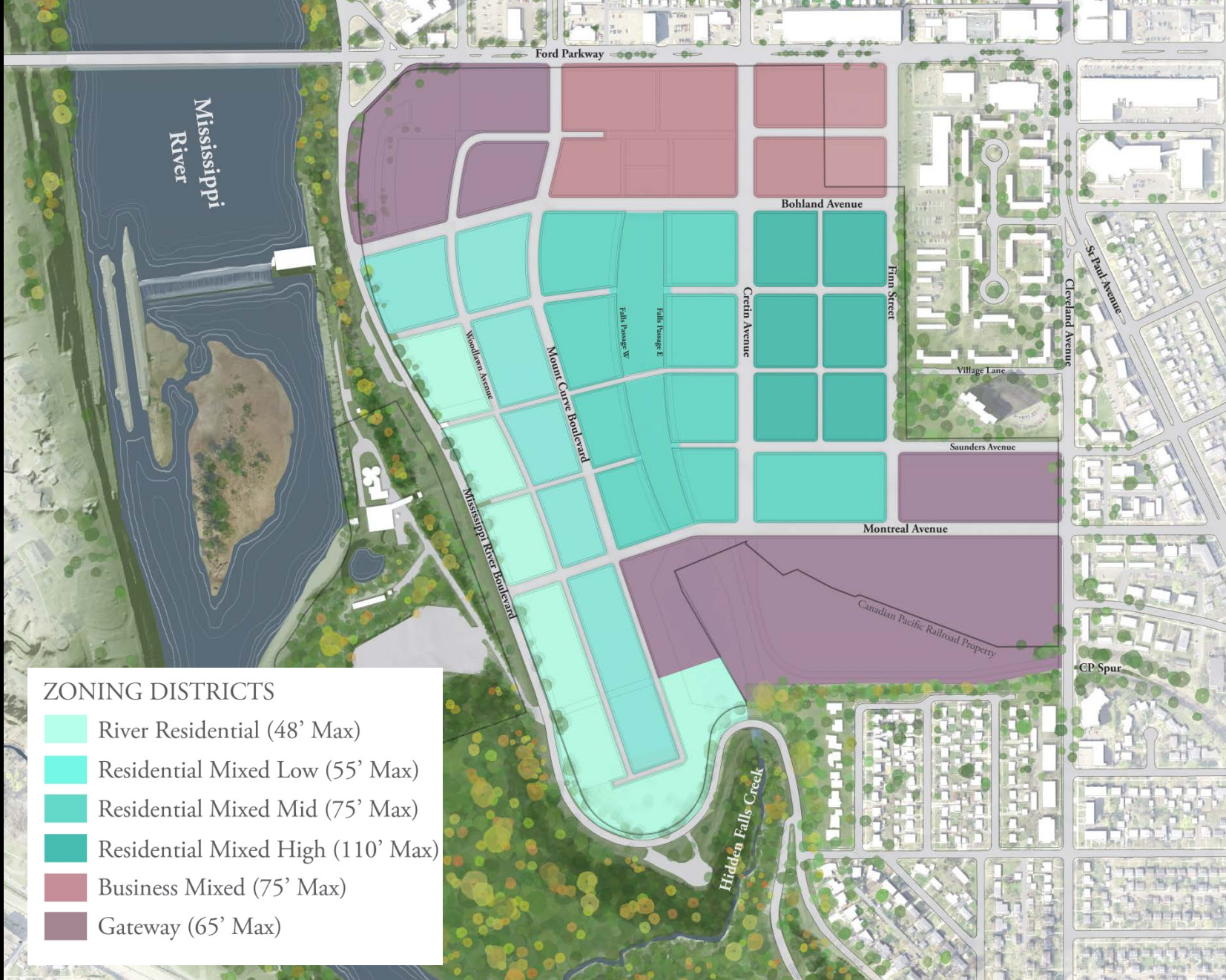
1. Preface
2. Vision and Guiding Principles
3. Existing Conditions
4. Zoning – Districts & General Standards
5. Zoning – Building Types
6. Infrastructure
7. Parks and Open Space
8. Public Art
9. Sustainability

Key Principles

1. Mix of Uses and Activities
2. Housing Variety
3. Jobs and Tax Base
4. Energy and Sustainability
5. Transportation
6. Parks and Amenities



DRAFT Zoning

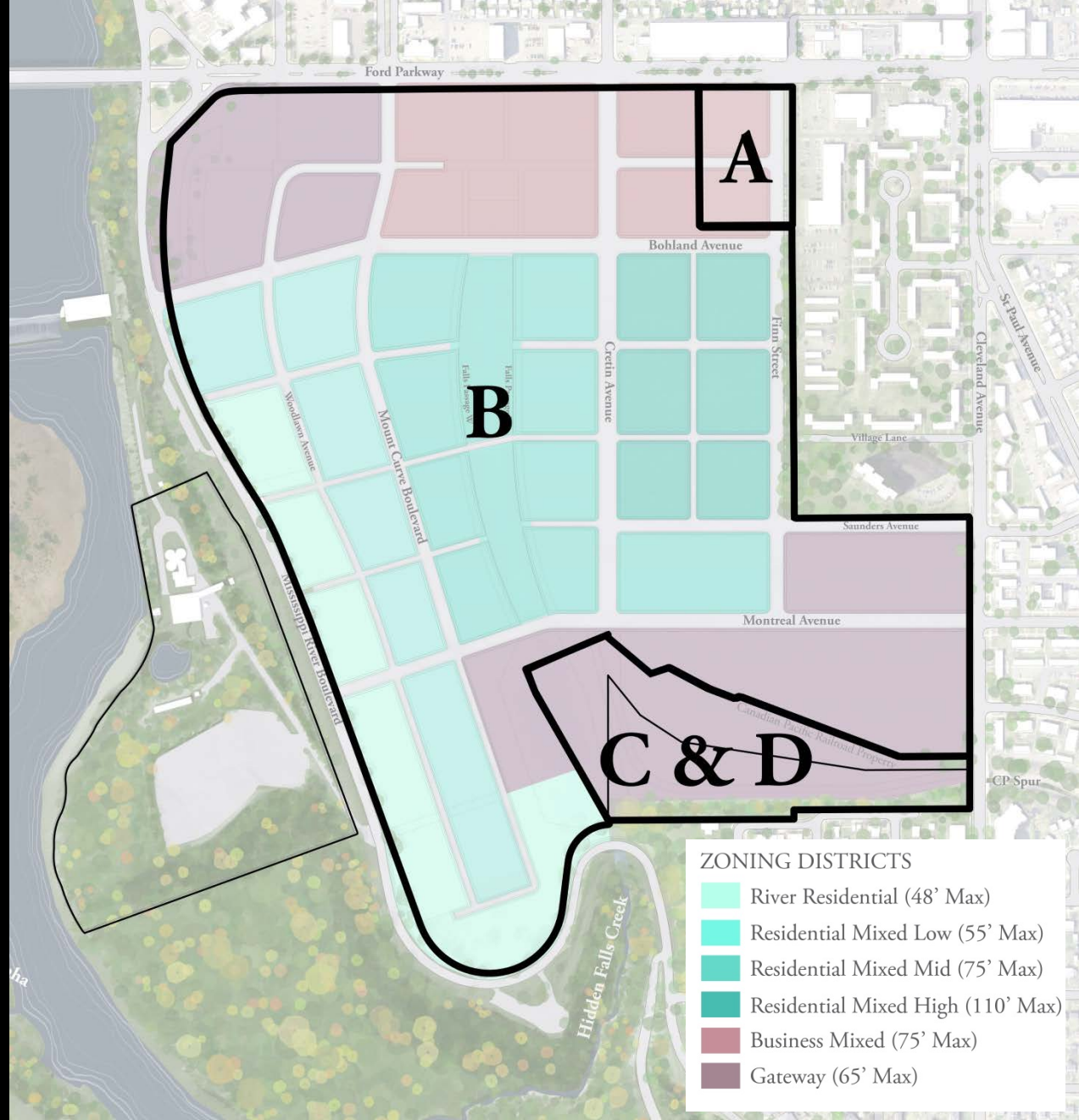


Parcels for Rezoning

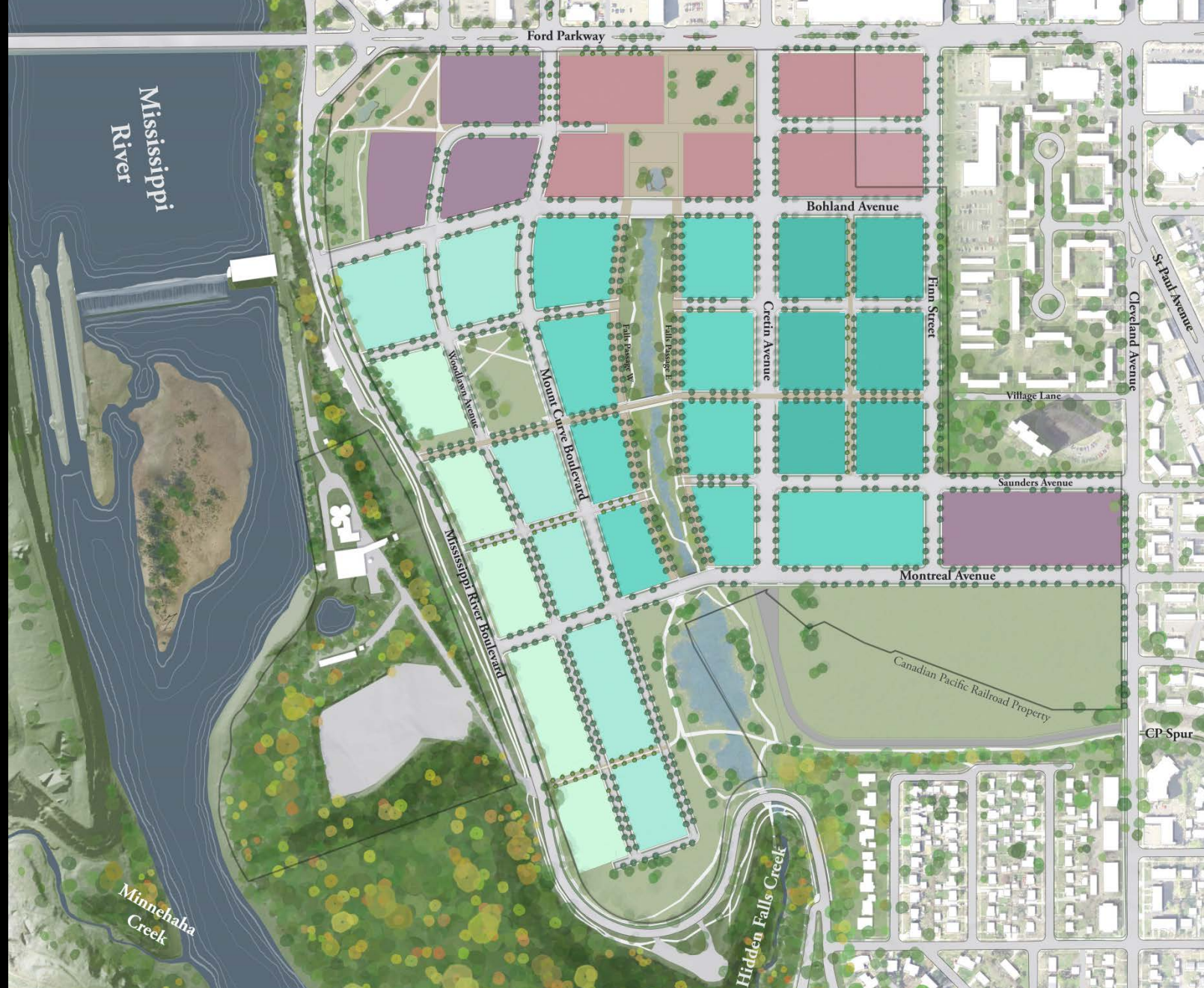
A. (3.76 acres) Burg & Wolfson Trustees

B. (122.4 acres)
Ford Motor Company

C. & D. (12.73 acres)
Canadian Pacific Railway
Company



DRAFT Zoning and Public Realm



Transportation Network



Parks and Open Space



Stormwater Feature



PRIMARY USES

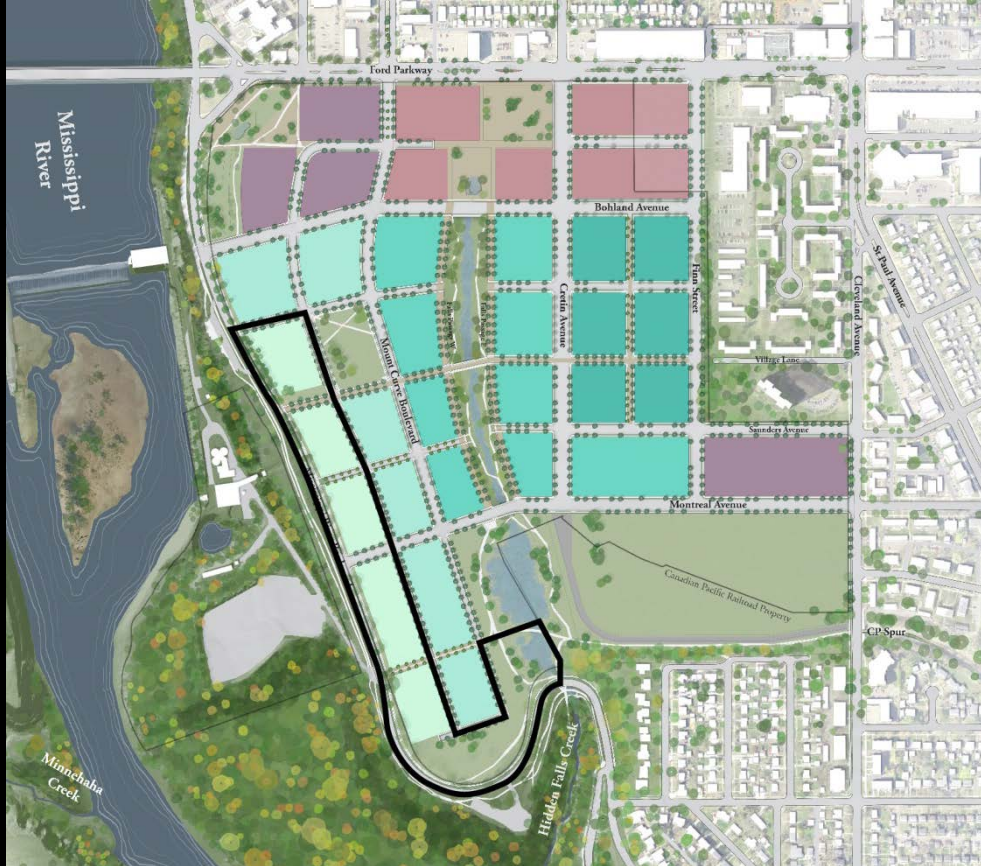
- Multi-unit home
- Carriage house

River Residential

Images for illustration only; they do not represent approved plans.

HEIGHTS

2 to 4 stories
48 feet max.



PRIMARY USES

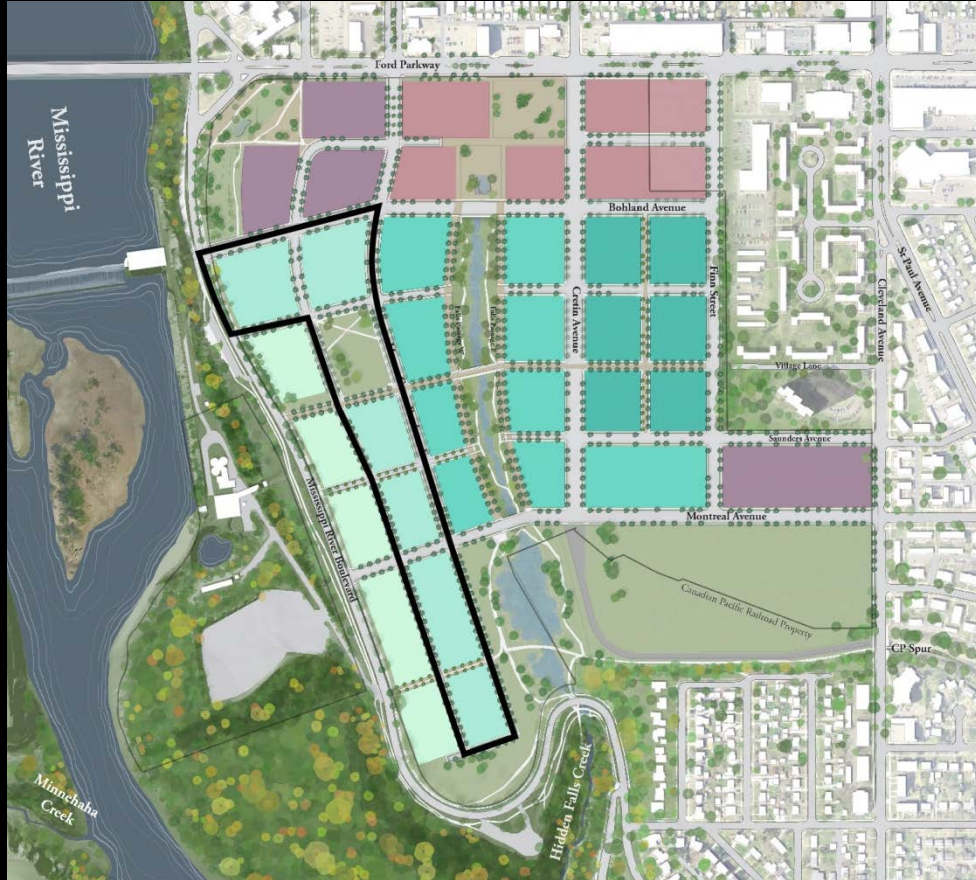
- Townhomes
- Multi-family residential
- Limited commercial; Live-Work

Residential - Low

Images for illustration only; they do not represent approved plans.

HEIGHTS

3 to 5 stories
55 feet max.



PRIMARY USES

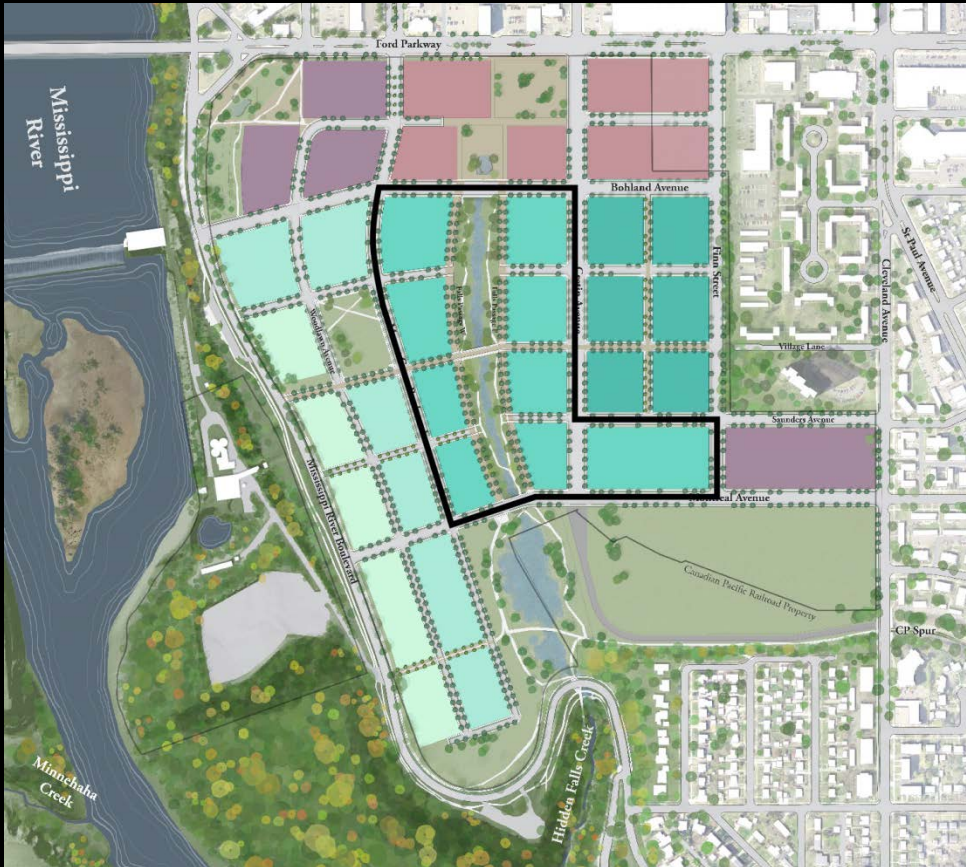
- Townhomes
- Multi-family residential
- Limited commercial & office; Live-Work

Residential - Mid

Images for illustration only; they do not represent approved plans.

HEIGHTS

3 to 6 stories
75 feet max.



PRIMARY USES

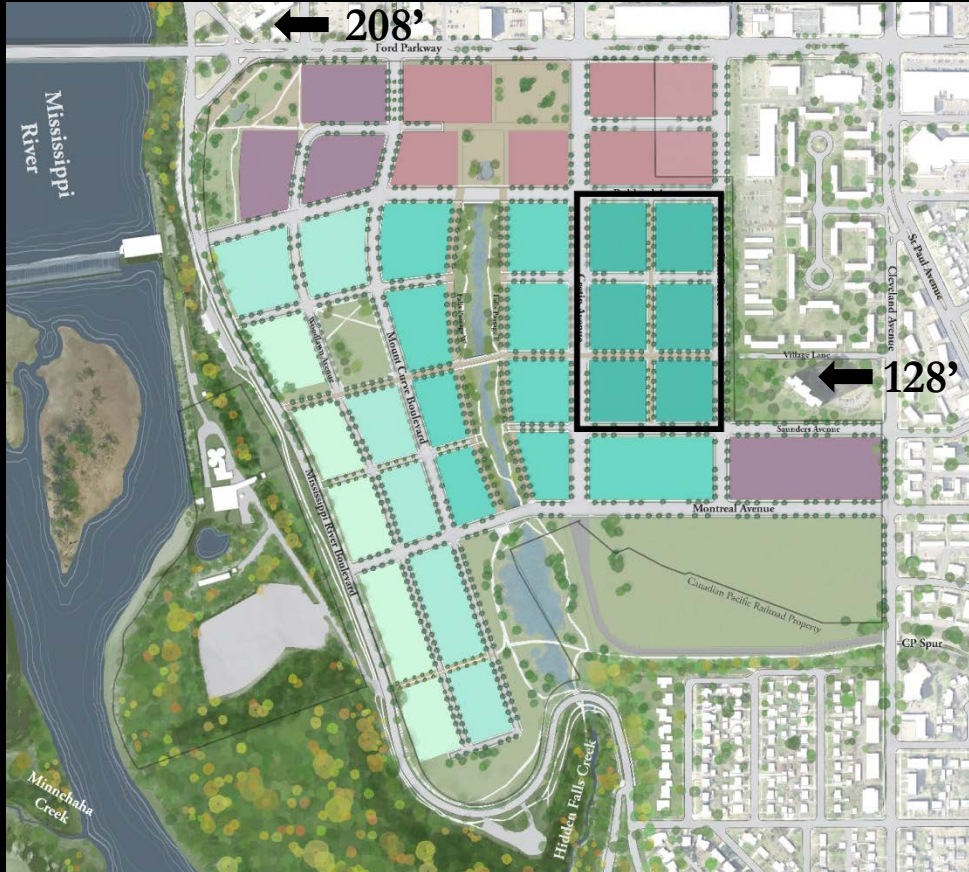
- Townhomes
- Multi-family residential
- Commercial & Office

Residential - High

Images for illustration only; they do not represent approved plans.

HEIGHTS

4 to 10 stories
110 feet max.



PRIMARY USES

- Retail and Service
- Office
- Multi-Family Residential

Business Mixed

Images for illustration only; they do not represent approved plans.

HEIGHTS

3 to 6 stories
75 feet max.



PRIMARY USES

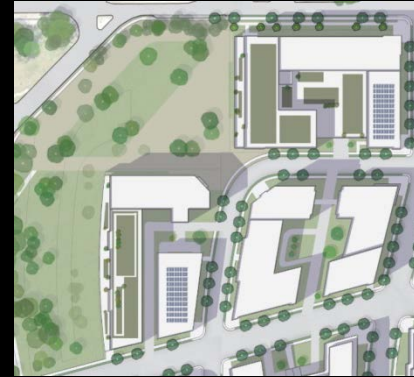
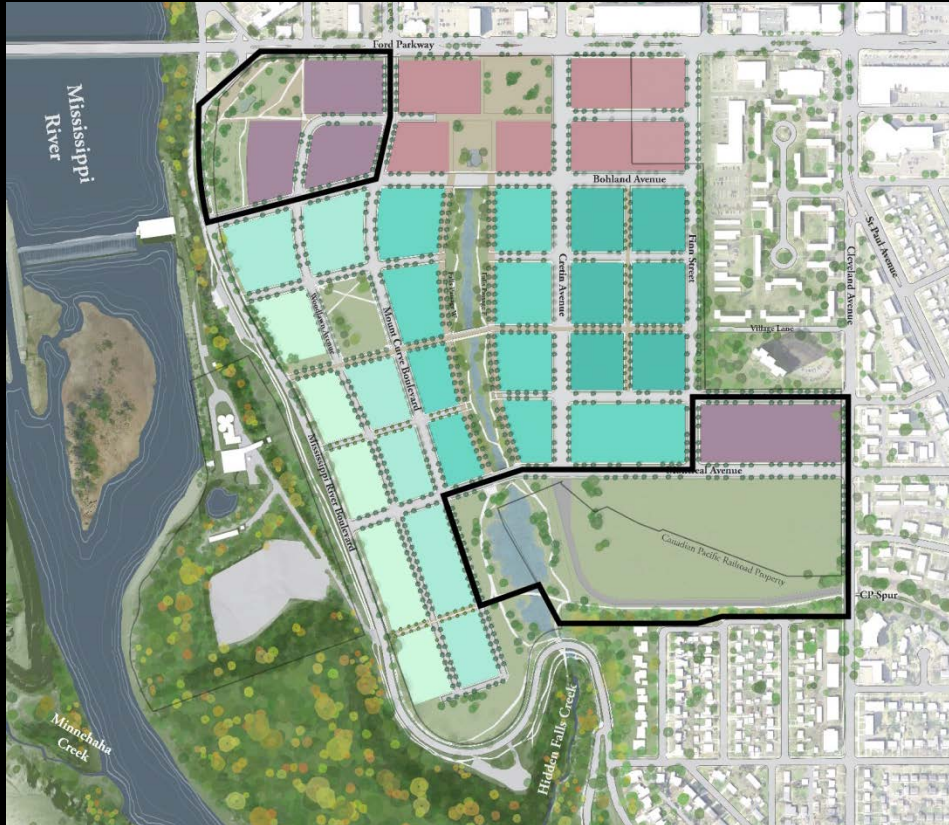
- Office
- Service
- Limited Retail

Gateway

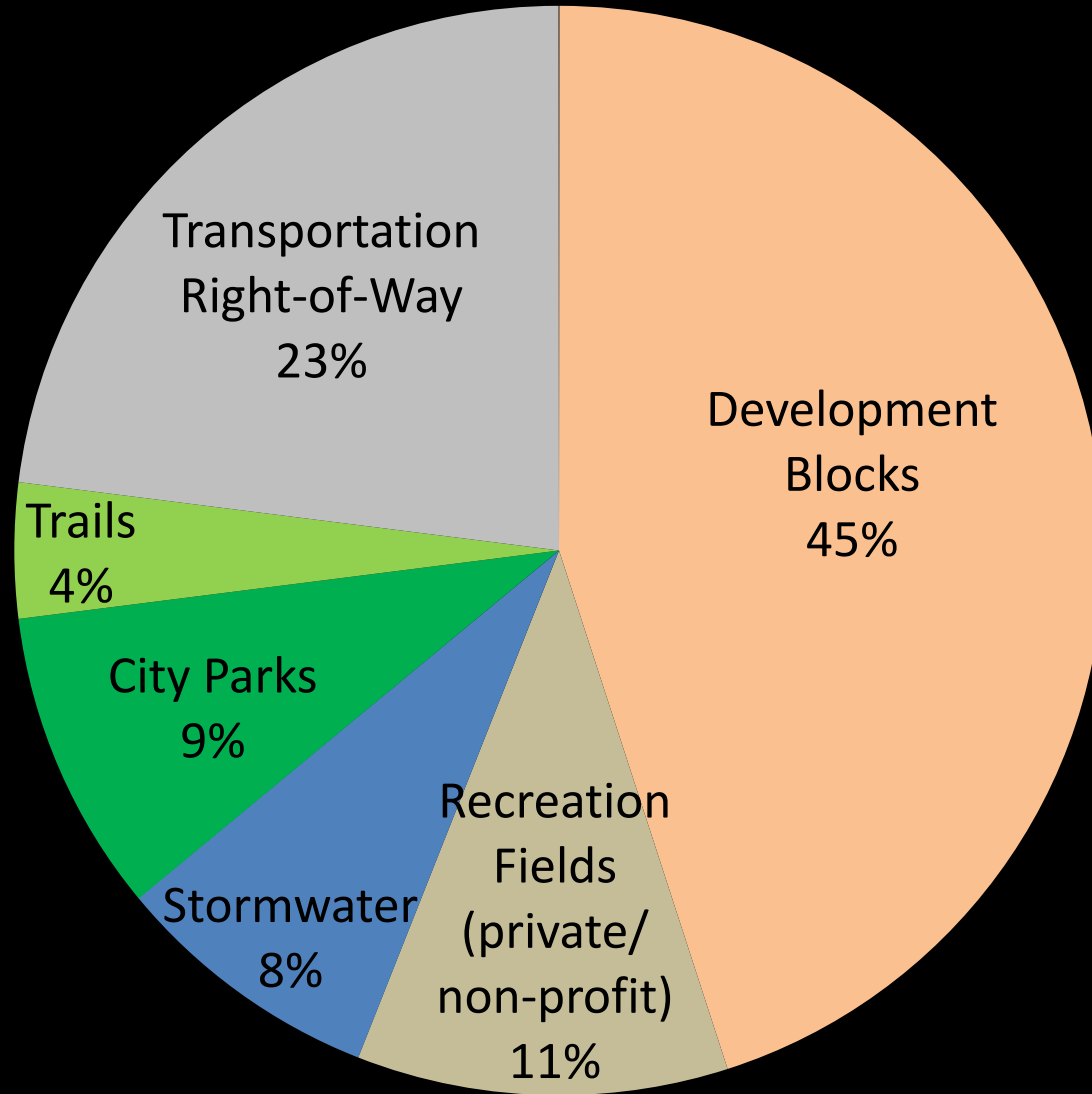
Images for illustration only; they do not represent approved plans.

HEIGHTS

3 to 6 stories
65 feet max.



Land Use Mix



DRAFT Development Range for Master Plan

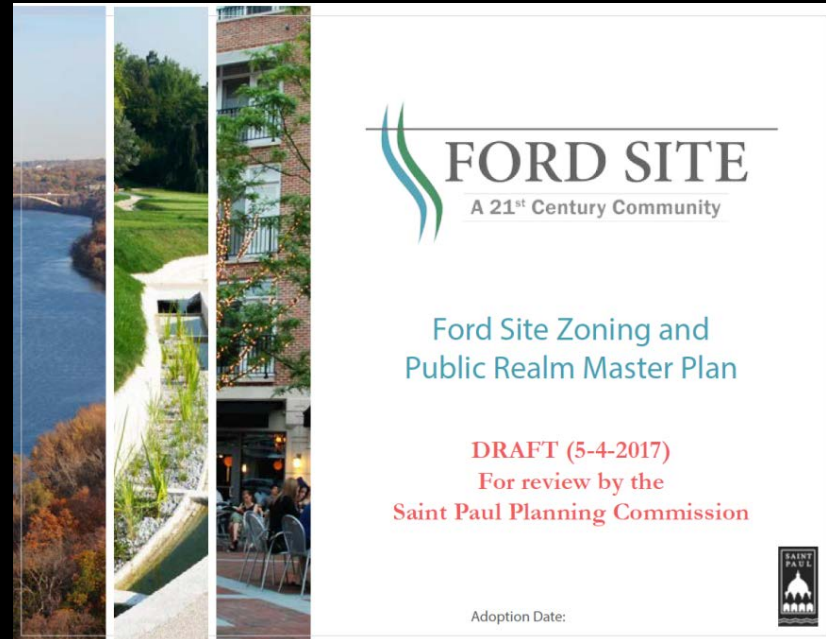
Land Use	Minimum	Maximum
Housing	2,400 dwelling units	4,000 dwelling units
Retail & Service	150,000 sq ft GFA	300,000 sq ft GFA
Office & Employment	200,000 sq ft GFA	450,000 sq ft GFA
Civic & Institutional	50,000 sq ft GFA	150,000 sq ft GFA

A Place for People



Committee Recommendation

1. Release for public review and public hearing on June 30th
 - Ford Site Zoning and Master Plan
 - Ordinance amendments for the new Ford zoning



How to Provide Input

Planning Commission Public Hearing on June 30th (?)

and/or

City Council Public Hearing in September (Date to be determined)

1. Submit official public testimony through the City's Ford web form at stpaul.gov/FordComments
2. Send a letter or email to the Planning Commission or City Council, care of City staff
3. Attend the public hearing and provide spoken testimony
 - Each of the above methods carries equal legal weight
 - Please include your address and full name with your testimony, in order for it to be included in the official public record