

Selby-Western Commercial Area Parking Study

Open House Meeting
October 18, 2016 • 5:00PM - 6:30PM
Saint Paul, MN

Selby-Western Commercial Area Parking Study

Study Purpose

The study will focus on managing today's existing and future parking supply.

Study Goals

- Address commercial and residential parking needs.
- Recommend mitigations for more frequent turnover rates in the commercial area.
- Explore potential long-term solutions for parking.

Study Approach

- Engage and listen to residents & businesses.
- Use a data driven process (utilization counts).
- Explore short-term and long-term parking needs.
- Develop a plan that can be used in other parts of the city.
- Provide an independent eye.



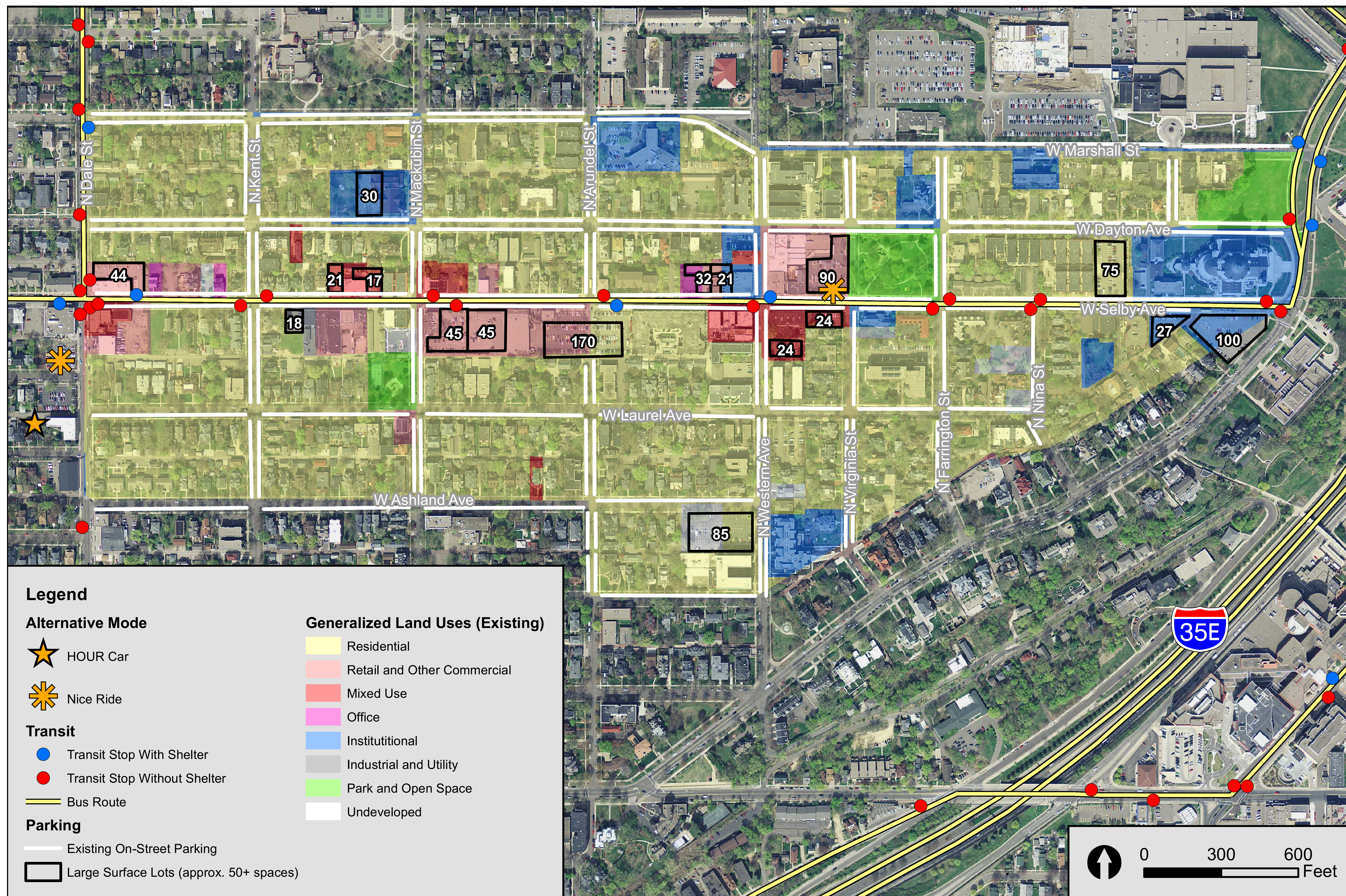
Schedule

Study Tasks	April	May	June	July	August	September	October
Existing Conditions	████████████████████						
Explore Solutions and Public Engagement			████████████████████				
Discover Options and Public Engagement				████████████████████			
Finalize Recommendations					████████████████████		

We are here

Selby-Western Commercial Area Parking Study

• Existing Conditions •



Selby-Western Commercial Area Parking Study

• Understanding Parking Utilization •

Utilization counts are typically captured during peak periods of the day (morning, lunch, and evening hours). Parking being utilized at or above 85 percent may indicate that a parking facility is reaching capacity.

The study collected parking utilization counts for a typical weekday and weekend:

- Thursday, April 14 from 9:00 AM - 7:00 PM
- Saturday, June 11 from 9:00 AM - 7:00 PM

The counts were collected for all on-street parking and large surface lots.

• Utilization for Selby-Western •

The utilization counts collected for this study served as a snapshot in time to help inform study recommendations.

General Findings

- On-street parking is heavily utilized during the afternoon and evening hours.
- Finding an on-street parking space is not generally an issue during the morning hours.
- There are opportunities to better utilize large surface lots throughout the day.
- The City will need to continue to monitor and collect utilization counts on an annual basis.



Selby-Western Commercial Area Parking Study

• Survey Findings •

A survey was held during the month of July to better understand the public's parking concerns. Approximately 85 Total Respondents

• Key Findings •

- 69% agree on-street parking has become an issue in the residential neighborhoods
- 45% strongly agree there should be better accommodation for other modes of transportation
- 42% disagree that there is enough parking for Selby-Western employees and customers

1. I best represent the Selby-Western area as a . . .	Resident	Business Owner/Tenant	Employee	Student	Property Owner/Developer	Other	
	72%	15%	2%	0%	10%	1%	
2. My primary mode of transportation is by . . .	car	transit	bike	walking	other (please specify)		
	74%	2%	1%	22%	1%		
3. When I drive to the Selby-Western area, I primarily park my car . . .	at a residential garage	at an underground or covered parking garage	at a surface parking lot	on the street	I do not drive a car	Other	
	33%	2%	17%	35%	6%	8%	
4. It is the most difficult to find parking during . . .	morning weekday (8AM-11AM)	morning weekend (8AM-11AM)	afternoon weekday (12PM-4PM)	afternoon weekend (12PM-4PM)	evening weekday (5PM-8PM)	evening weekend (5PM-8PM)	parking is not difficult to find
	3%	2%	1%	2%	45%	28%	20%
5. The Selby-Western area is a vibrant and prosperous neighborhood.	strongly disagree	disagree	neutral	agree	strongly agree		
	0%	0%	2%	74%	23%		
6. Parking is important to the success of Selby-Western businesses.	strongly disagree	disagree	neutral	agree	strongly agree		
	0%	2%	25%	38%	35%		
7. On-Street parking has become an issue in the residential neighborhoods.	strongly disagree	disagree	neutral	agree	strongly agree		
	5%	8%	18%	24%	45%		
8. There is enough parking for businesses and customers.	strongly disagree	disagree	neutral	agree	strongly agree		
	22%	32%	25%	20%	1%		
9. There is enough parking for Selby-Western employees.	strongly disagree	disagree	neutral	agree	strongly agree		
	19%	33%	34%	12%	1%		
10. The Selby-Western neighborhood should better accommodate other modes of transportation, including bikes, pedestrians, and buses.	strongly disagree	disagree	neutral	agree	strongly agree		
	9%	8%	18%	21%	45%		
11. It is easy to understand the parking restrictions in the Selby-Western area.	strongly disagree	disagree	neutral	agree	strongly agree		
	16%	12%	12%	51%	10%		
12. I would support metered parking on Selby Avenue.	strongly disagree	disagree	neutral	agree	strongly agree		
	52%	19%	6%	12%	11%		
13. I would support paid parking lots to serve the commercial area.	strongly disagree	disagree	neutral	agree	strongly agree		
	7%	9%	6%	30%	48%		
14. Stronger parking enforcement needs to occur in the Selby-Western area.	strongly disagree	disagree	neutral	agree	strongly agree		
	3%	25%	29%	17%	25%		
15. Two hour parking for on street parking is an adequate amount of time for Selby Avenue.	strongly disagree	disagree	neutral	agree	strongly agree		
	7%	8%	20%	52%	13%		

General Findings:

- The majority of participants were residents.
- On-street parking is a concern for residents.
- Participants are not in favor of metered parking. However, participants are in favor of paid parking lots.
- Parking is difficult to find during the evening hours Monday - Sunday.
- There is various perceptions on the amount of parking available to meet everyone's needs - too much or too little.

Selby-Western Commercial Area Parking Study

On-Street Parking Strategy: Striping

What We Heard

"Vehicles are not being parked in a manner that maximizes the available spaces."

Findings

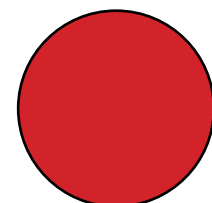
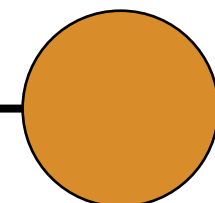
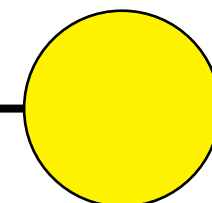
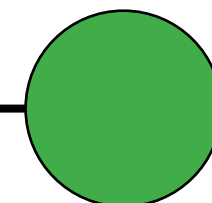
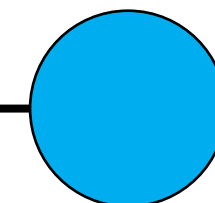
Pavement lines help maximize the number of spaces available for on-street parking.



Next Steps

Implement pavement striping along Selby Avenue to maximize available parking spaces.

Please use a dot to indicate if you agree Selby Avenue should be striped.

Strongly Disagree	Disagree	Neutral	Agree	Strongly Agree
				

Selby-Western Commercial Area Parking Study

On-Street Parking Strategy: Metered Parking

What We Heard

“Residents and businesses are not in favor of metered parking.”



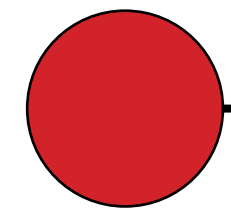
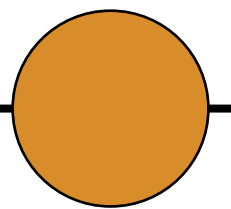
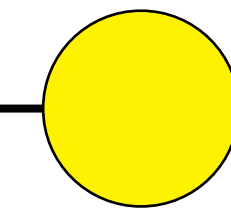
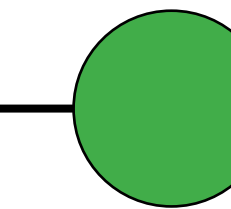
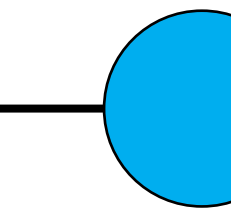
Findings

Metered parking can provide a number of benefits in commercial areas, such as Selby-Western (e.g., generates funds, manages turnover, enforces time).

Next Steps

At this time, metered parking is not supported by the general public and should not be pursued.

Please use a dot to indicate if you agree that metered parking should NOT be implemented.

Strongly Disagree	Disagree	Neutral	Agree	Strongly Agree
				

Selby-Western Commercial Area Parking Study

On-Street Parking Strategy: Design Guidelines

What We Heard

“It is unclear when on-street parking is allowed one-sided or both-sides of the road.”

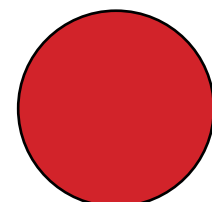
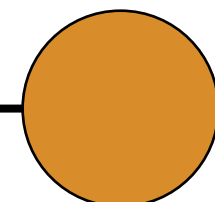
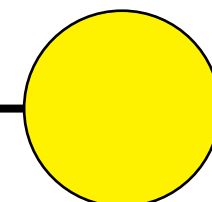
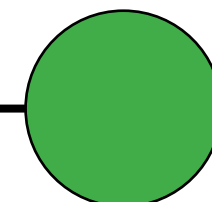
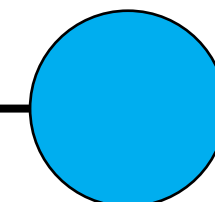
Findings

- In most cases, the current roadway widths are too narrow to meet design guidelines.
- Applying design guidelines to the area will result in a significant loss of on-street parking, negatively impacting the neighborhood.

Next Steps

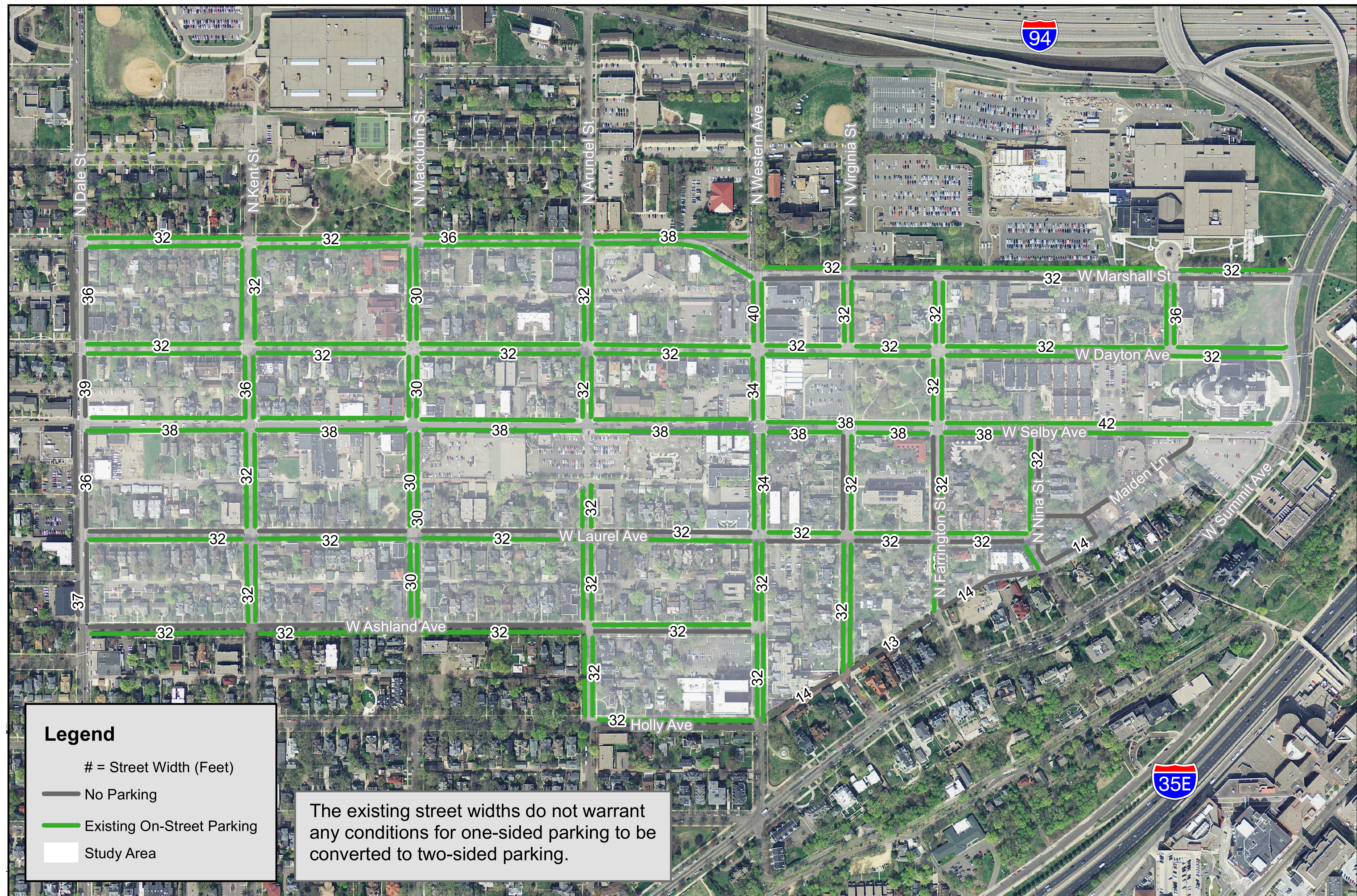
Maintain the current on-street parking supply.

Please use a dot to indicate that you agree with maintaining today's on-street parking supply.

Strongly Disagree	Disagree	Neutral	Agree	Strongly Agree
				

Selby-Western Commercial Area Parking Study

On-Street Parking Strategy: Design Guidelines



Selby-Western Commercial Area Parking Study

On-Street Parking Strategy: Residential Parking Permit District

What We Heard

"There is interest in creating a Residential Parking Permit District."



Findings

The City is exploring this option as part of a separate study.

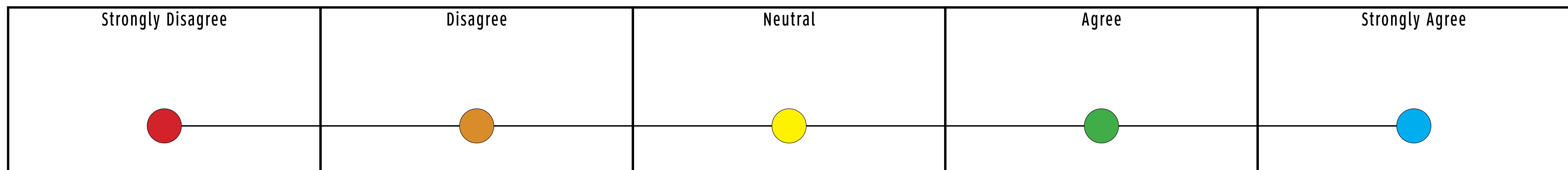
Next Steps

Support the City's initiative to further evaluate Residential Parking Permits for the district over the next three months.

Residential Parking Permit Programs:

- Can address spillover problems in nearby commercial areas, but should accommodate non-residential users as much as possible
- Helps preserve on-street parking for residents and their visitors
- Comes with a cost to the resident or home owner
- Does not guarantee a space or "front-door" parking
- On-street parking is a community amenity for all and is owned by the city

Please use a dot to indicate if you want to see a residential parking permit district implemented.



Selby-Western Commercial Area Parking Study

Off-Street Parking Strategy: Shared Parking

What We Heard

"A large number of vehicles are being parked on the street by employees or for valet."

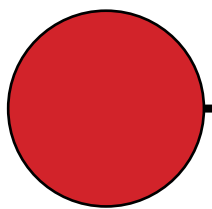
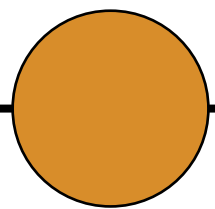
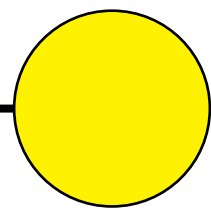
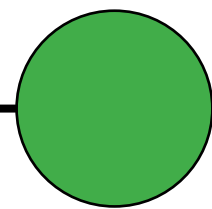
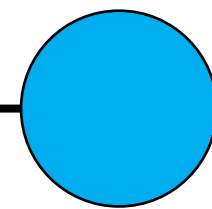
Findings

There are larger parking reservoirs throughout the study area that could potentially accommodate off-street remote parking for employees and valet parking.

Next Steps

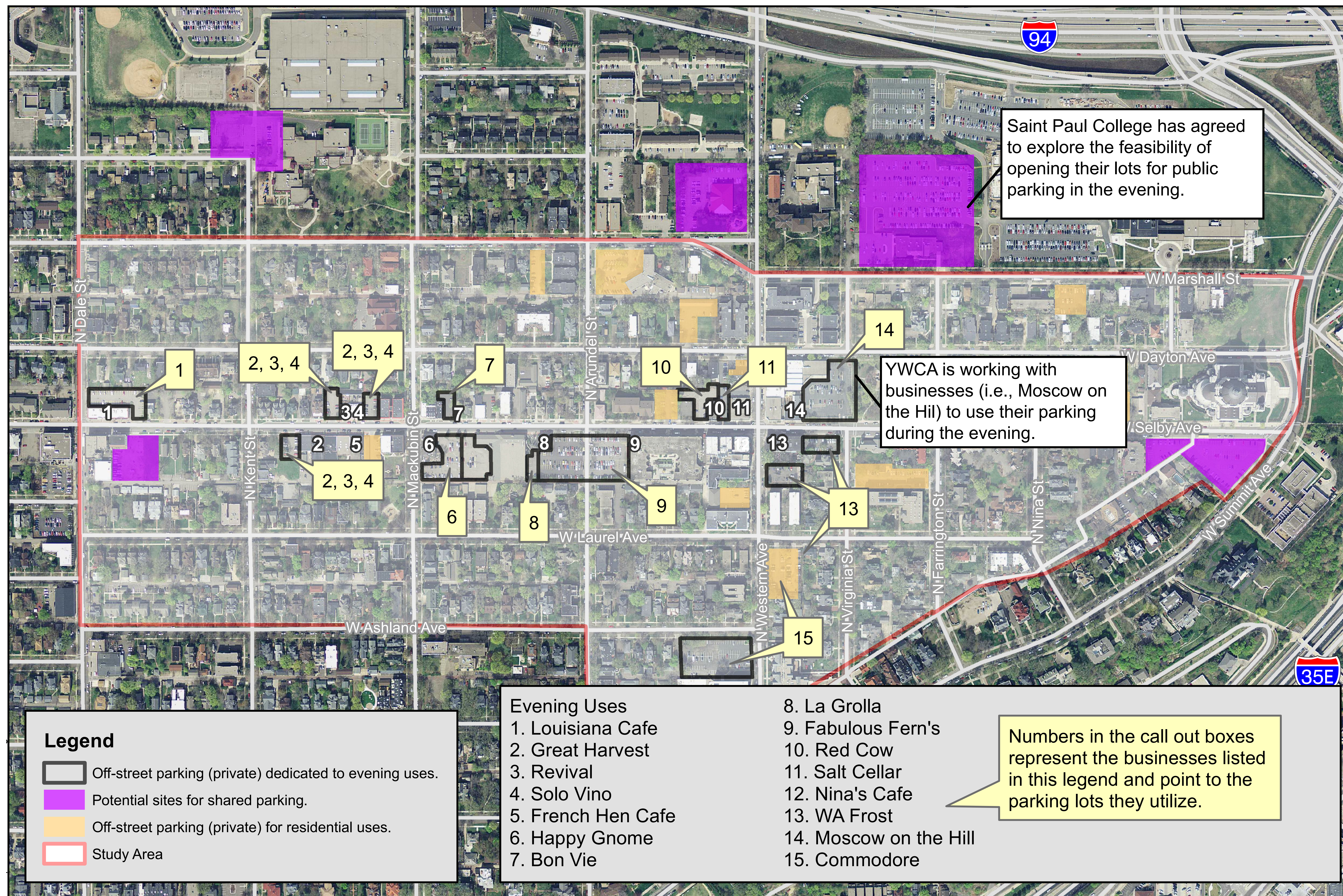
Support Saint Paul College's initiative to open their parking lots to evening parking use for the Selby-Western Commercial Area. Work with businesses to locate employee and valet parking at this location.

Please use a dot to indicate if you agree with using Saint Paul College's lot for employee/valet parking.

Strongly Disagree	Disagree	Neutral	Agree	Strongly Agree
				

Selby-Western Commercial Area Parking Study

Off-Street Parking Strategy: Shared Parking



Selby-Western Commercial Area Parking Study

Off-Street Parking Strategy: Shared Parking

What We Heard

“Certain parking lots are not currently being utilized or available during the evening hours (e.g., YWCA).”



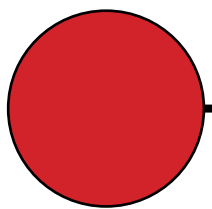
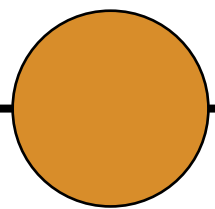
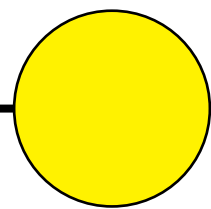
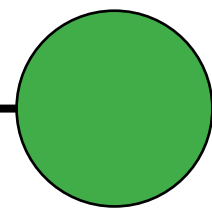
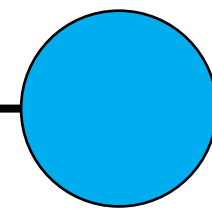
Findings

A recent partnership between the YWCA and Moscow on the Hill has been formed. The YWCA lot will be opened in the evening to accommodate Moscow on the Hill's patrons.

Next Steps

Support the YWCA's pilot program to use their lot for evening use with Moscow on the Hill.

Please use a dot to indicate if you agree with using the YWCA's parking lot for evening use.

Strongly Disagree	Disagree	Neutral	Agree	Strongly Agree
				

Selby-Western Commercial Area Parking Study

General Parking Strategies

Please select your top two priorities.

Provide bike parking throughout the neighborhood.

Place a sticker here if you would like to see this strategy implemented.

Implement safer pedestrian crossings along Selby Avenue.

Place a sticker here if you would like to see this strategy implemented.

Promote transit by offering incentives to employees and enhance existing transit stops (i.e., shelters).

Place a sticker here if you would like to see this strategy implemented.

Enhance car sharing programs for neighbors and businesses.

Place a sticker here if you would like to see this strategy implemented.

Require new businesses to develop and implement strategies to reduce parking demand.

Place a sticker here if you would like to see this strategy implemented.

Create a parking committee (businesses and residents) to help implement the study's recommendations.

Place a sticker here if you would like to see this strategy implemented.

Selby-Western Commercial Area Parking Study

Are there other solutions that we have not explored?

Please use a post-it note to write your preferred answer.

Selby-Western Commercial Area Parking Study

What are the barriers for implementing these strategies?

Please use a post-it note to write your preferred answer.