

Selby-Western Commercial Area Parking Study

Open House Meeting
July 11, 2016 • 5:30PM-7:00PM
Saint Paul, MN

Selby-Western Commercial Area Parking Study

Study Purpose

The study will focus on managing today's existing and future parking supply.

Study Goals

- Address commercial and residential parking needs
- Recommend mitigations for more frequent turnover rates in the commercial area
- Explore potential long-term solutions for parking

Study Approach

- Engage and listen to residents & businesses
- Use a data driven process (utilization counts)
- Address parking needs for all land uses
- Explore short-term and long-term parking needs
- Develop a plan that can be used in other parts of the city
- Provide an independent eye

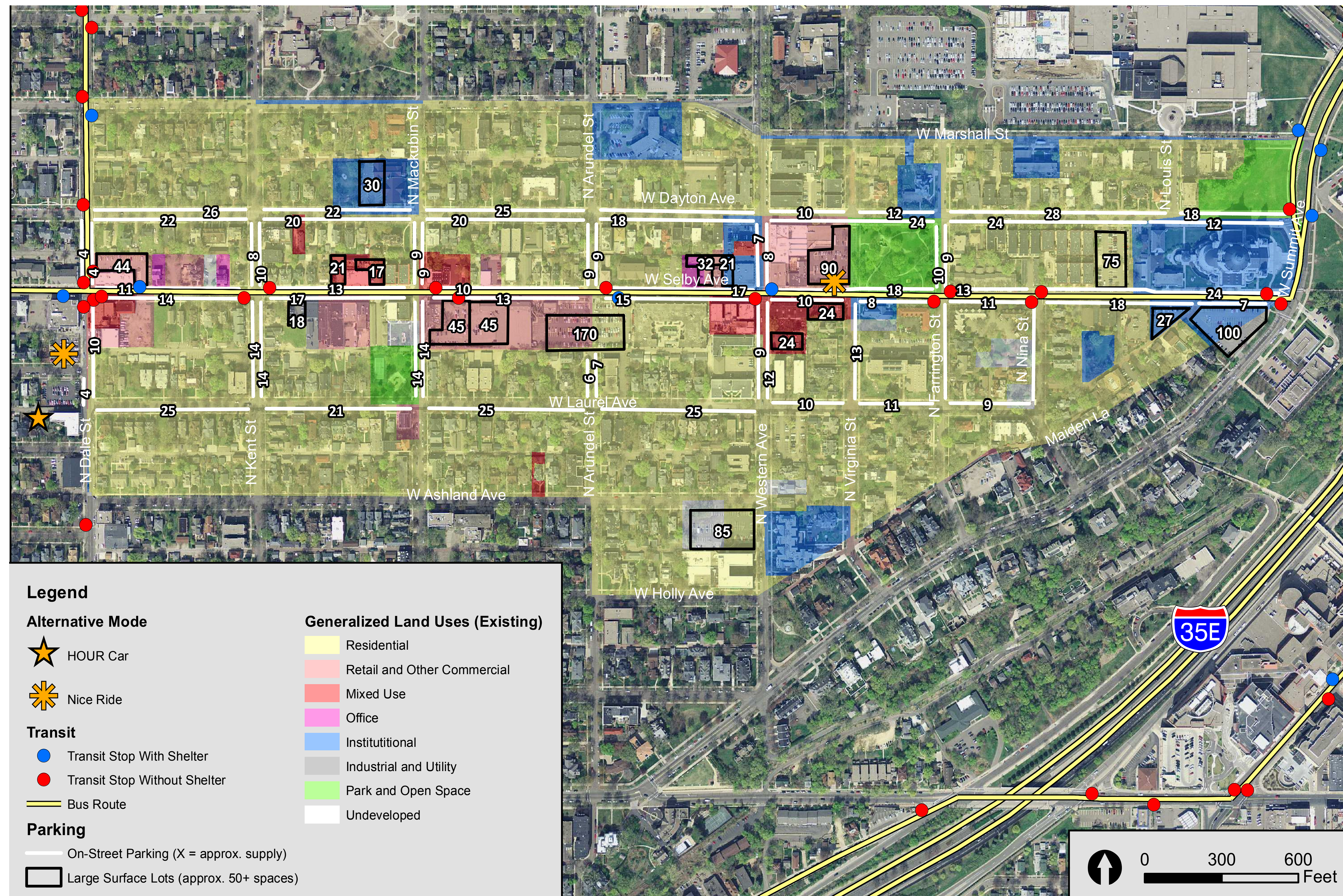


| Study Tasks | April | May | June | July | August | September |
|---|-------|-----|------|------|--------|-----------|
| Existing Conditions | | | | | | |
| Explore Solutions and Public Engagement | | | | | | |
| Discover Options and Public Engagement | | | | | | |
| Finalize Recommendations | | | | | | |

We are here

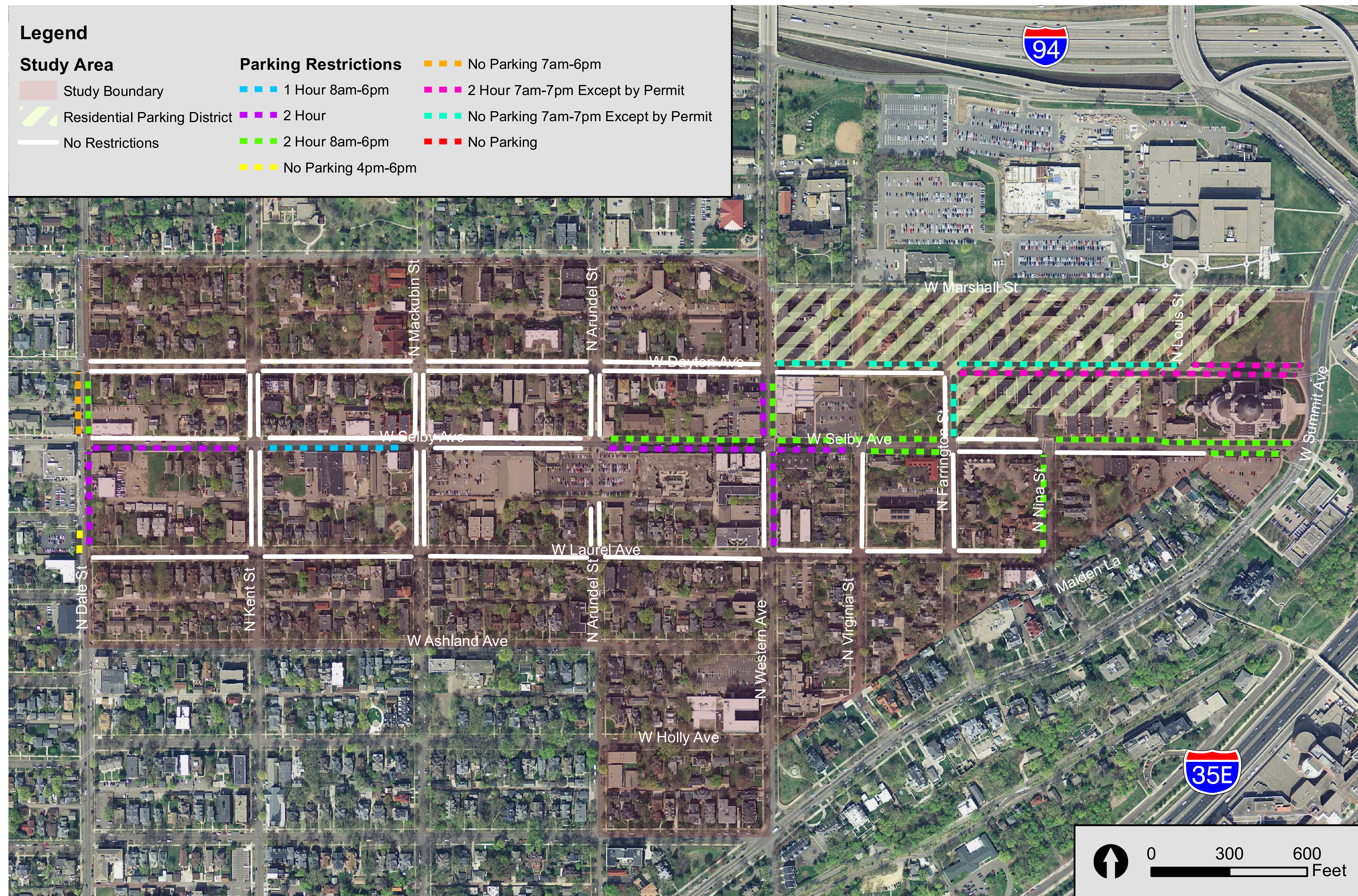
Selby-Western Commercial Area Parking Study

• Existing Conditions •



Selby-Western Commercial Area Parking Study

• Parking Restrictions •



Selby-Western Commercial Area Parking Study

• Understanding Parking Utilization •

Utilization counts are typically captured during peak periods of the day (morning, lunch, and evening hours). Parking being utilized at or above 85 percent may indicate that a parking facility is reaching capacity.

In general, a parking facility wants to maintain a 10 percent supply cushion to allow for parking turnover and traffic circulation. Parking facilities exceeding a 93 percent utilization rate typically are at full capacity.



• Utilization for Selby-Western •

The study collected parking utilization counts for a typical weekday and weekend:

- Thursday, April 14 from 9:00 AM - 7:00 PM
- Saturday, June 11 from 9:00 AM - 7:00 PM

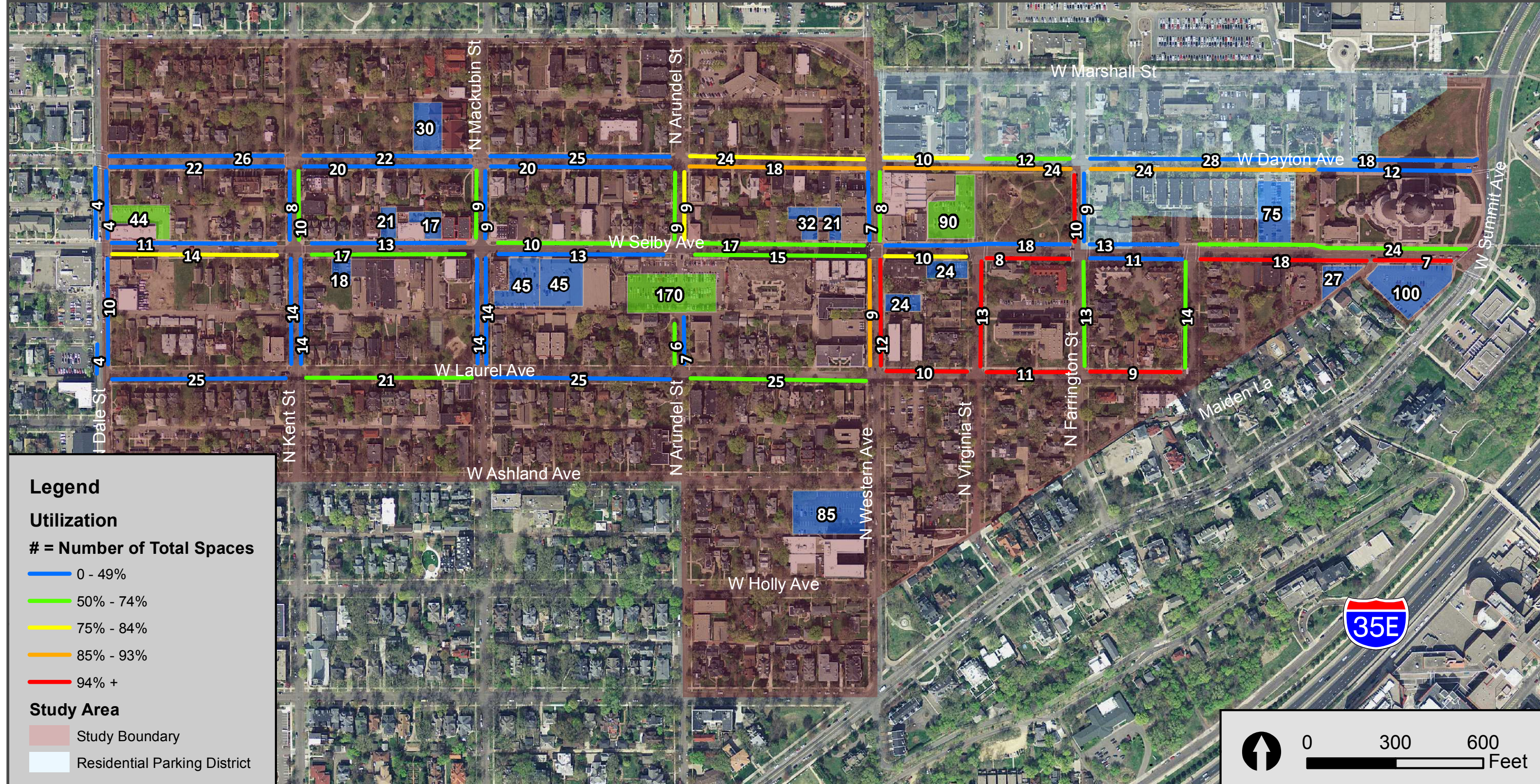
The counts were collected for all on-street parking and large surface lots.

• Key Findings •

Parking is underutilized during the morning hours for both weekdays and weekends.

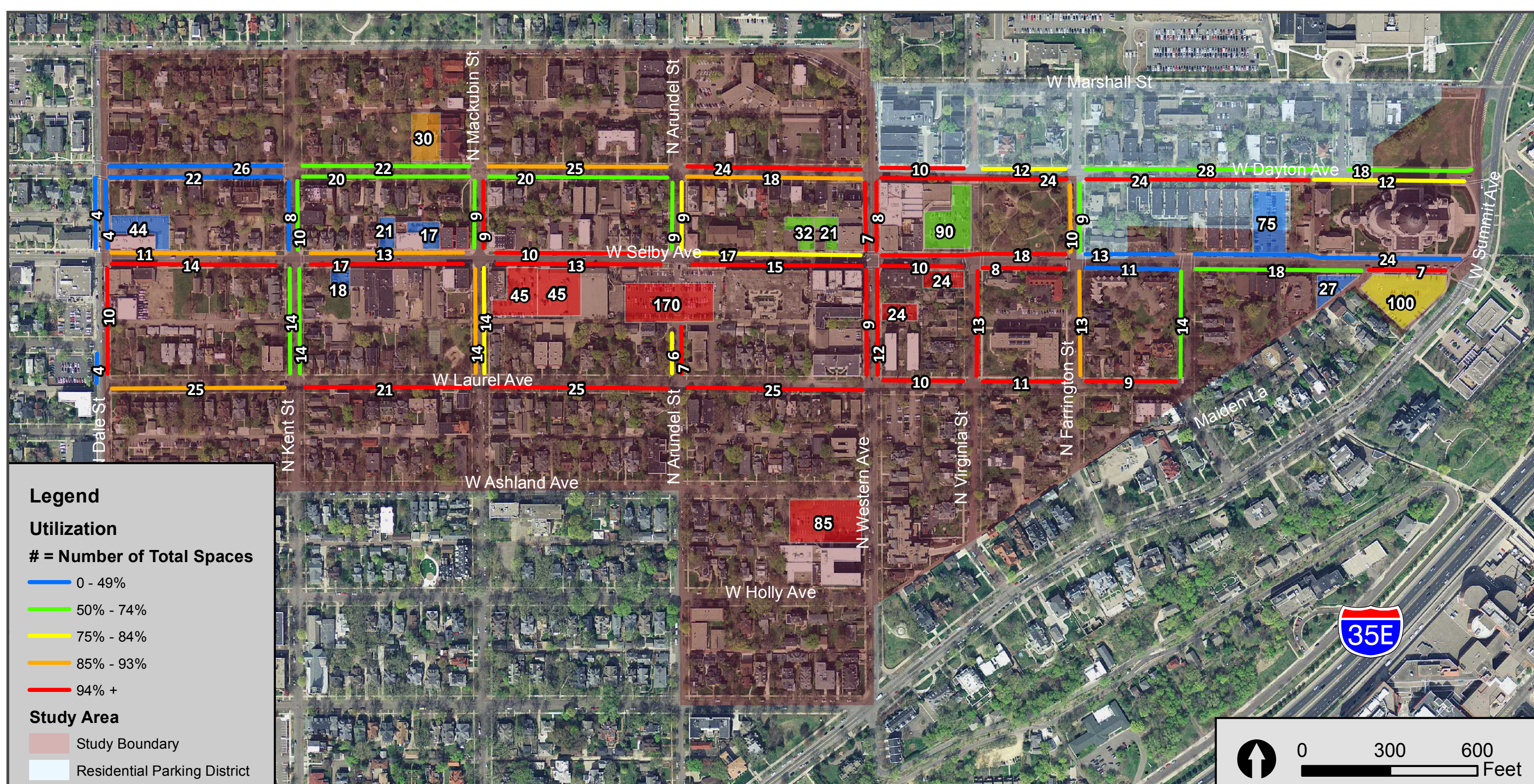
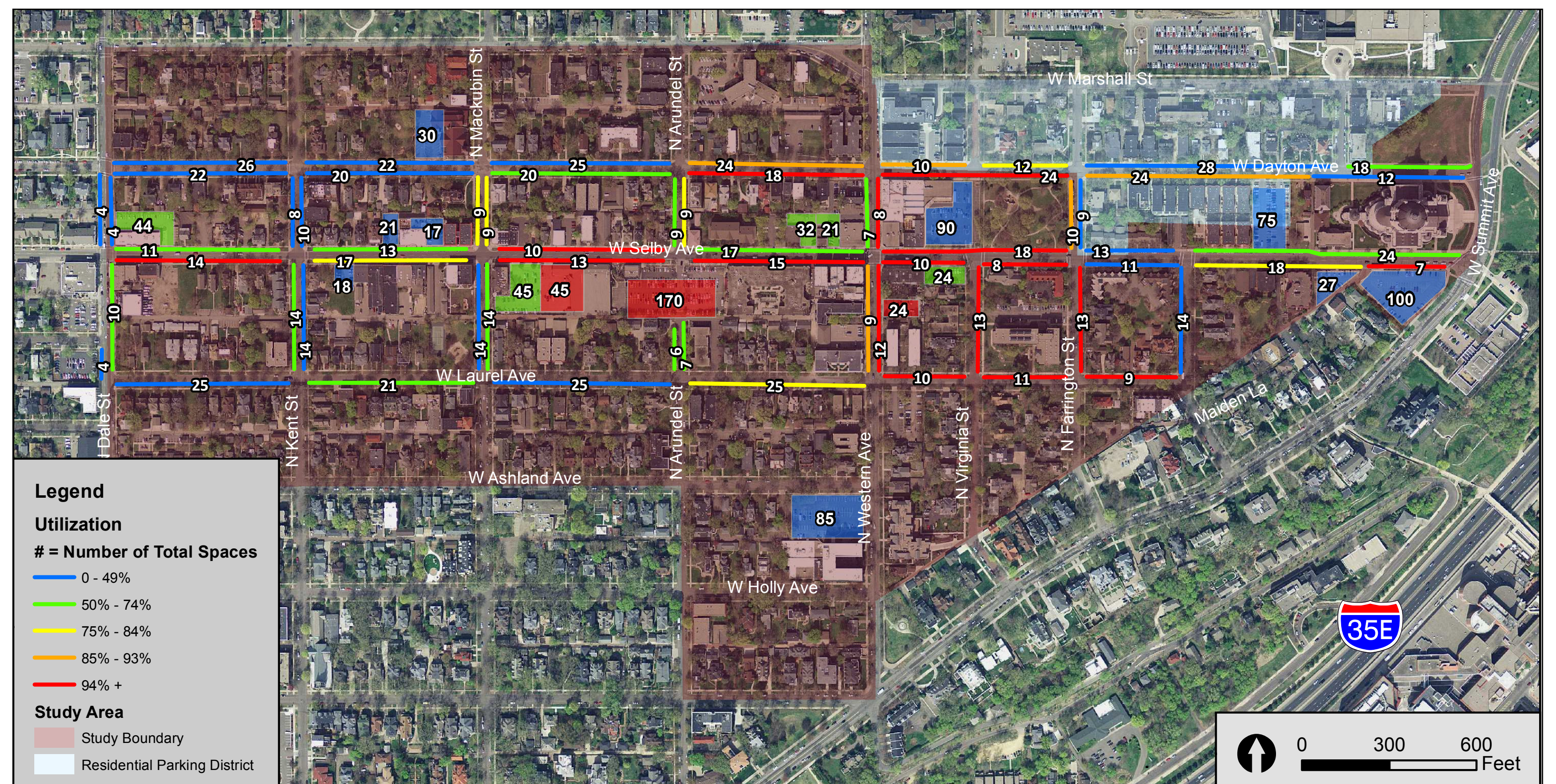
Parking becomes more utilized during the afternoon and evening hours for both weekdays and weekends.

Selby-Western Commercial Area Parking Study



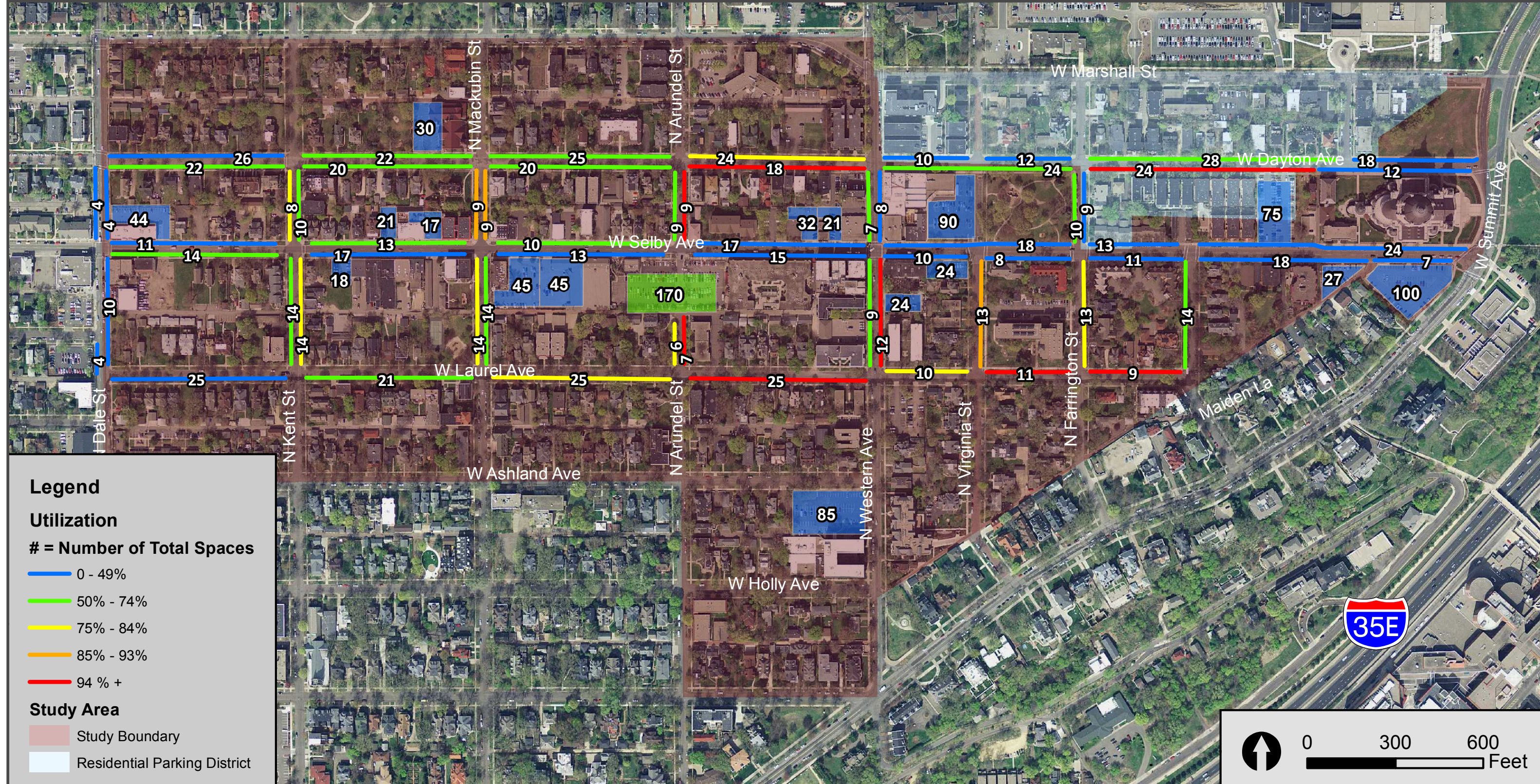
Morning Utilization
9:00 AM - 10:00 AM
Thursday April 14th

Afternoon Utilization
12:00 PM - 1:00 PM
Thursday April 14th



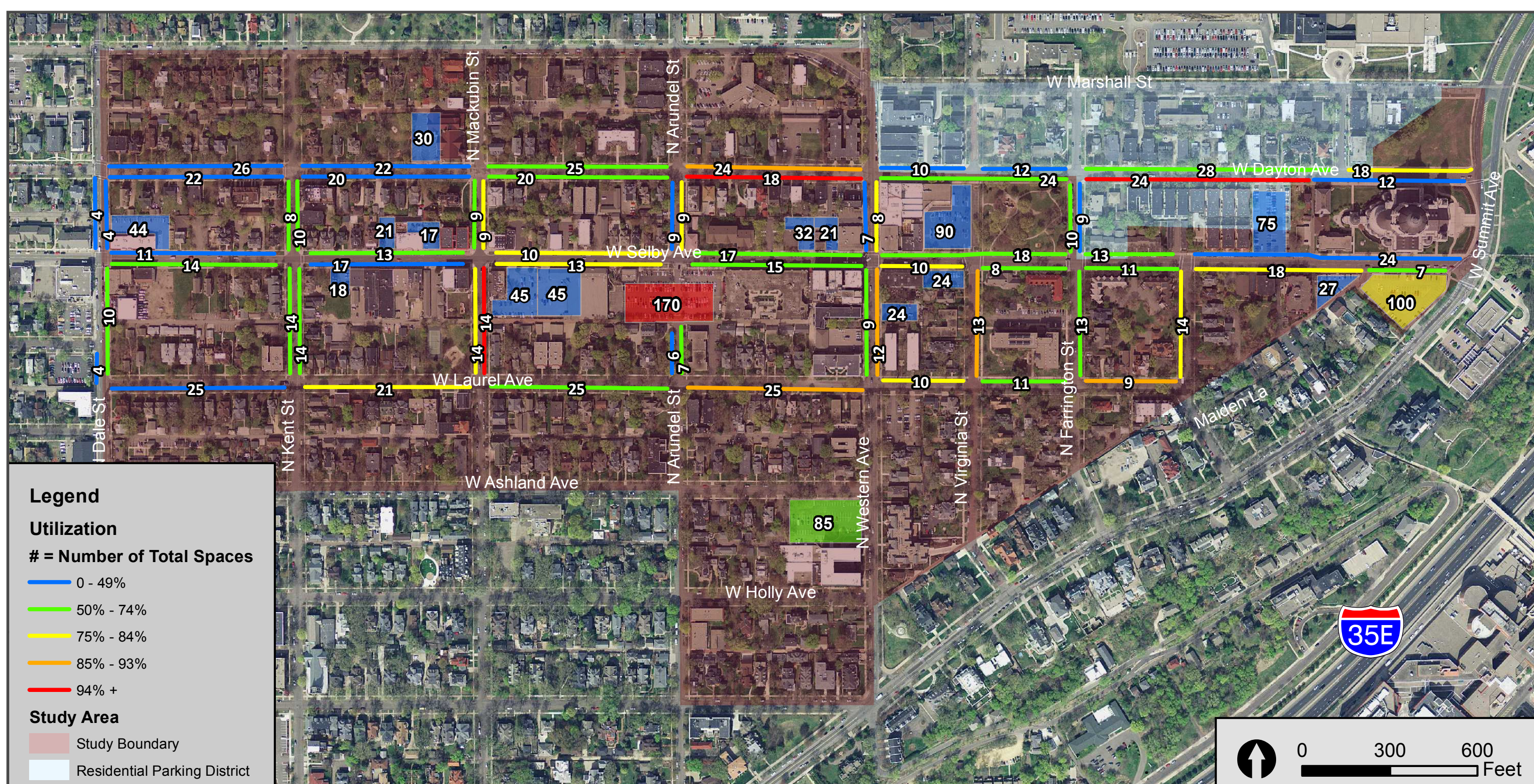
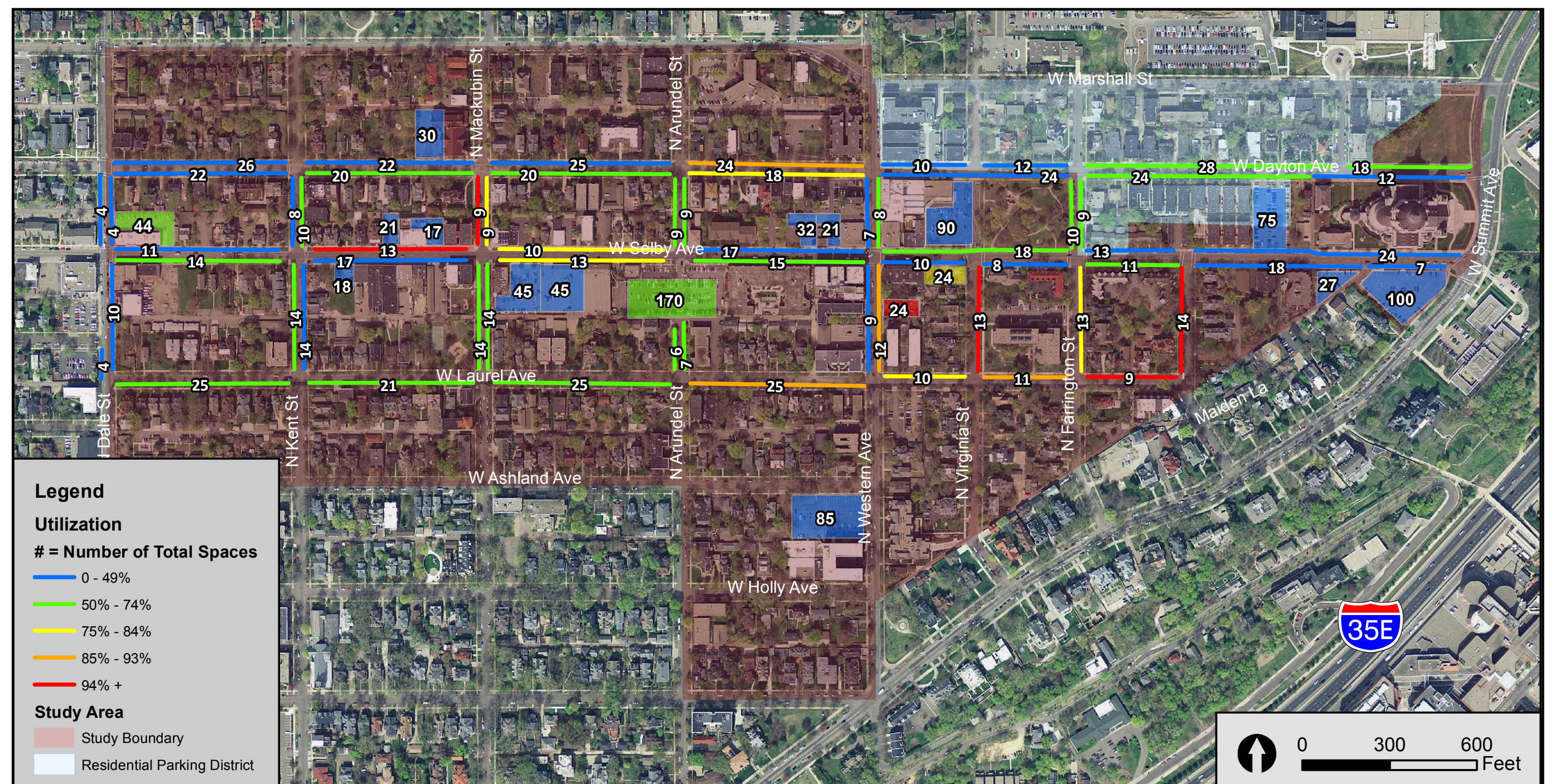
Evening Utilization
6:00 PM - 7:00 PM
Thursday April 14th

Selby-Western Commercial Area Parking Study



Morning Utilization
9:00 AM - 10:00 AM
Saturday June 11th

Afternoon Utilization
12:00 PM - 1:00 PM
Saturday June 11th



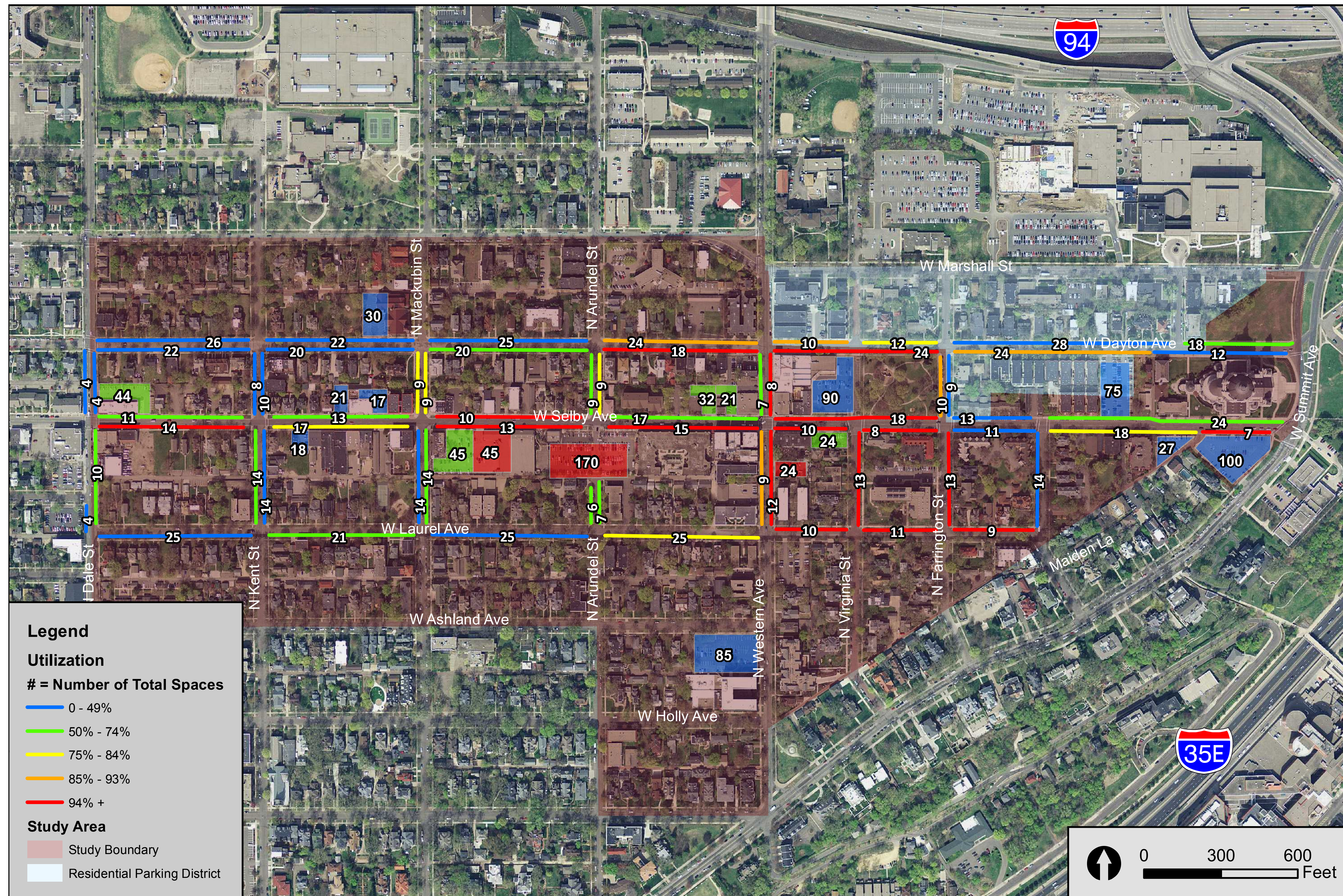
Evening Utilization
6:00 PM - 7:00 PM
Saturday June 11th

Morning Utilization • 9:00 AM - 10:00 AM • Thursday April 14th



Selby-Western Commercial Area Parking Study

Afternoon Utilization • 12:00 PM - 1:00 PM • Thursday April 14th



Evening Utilization • 6:00 PM - 7:00 PM • Thursday April 14th

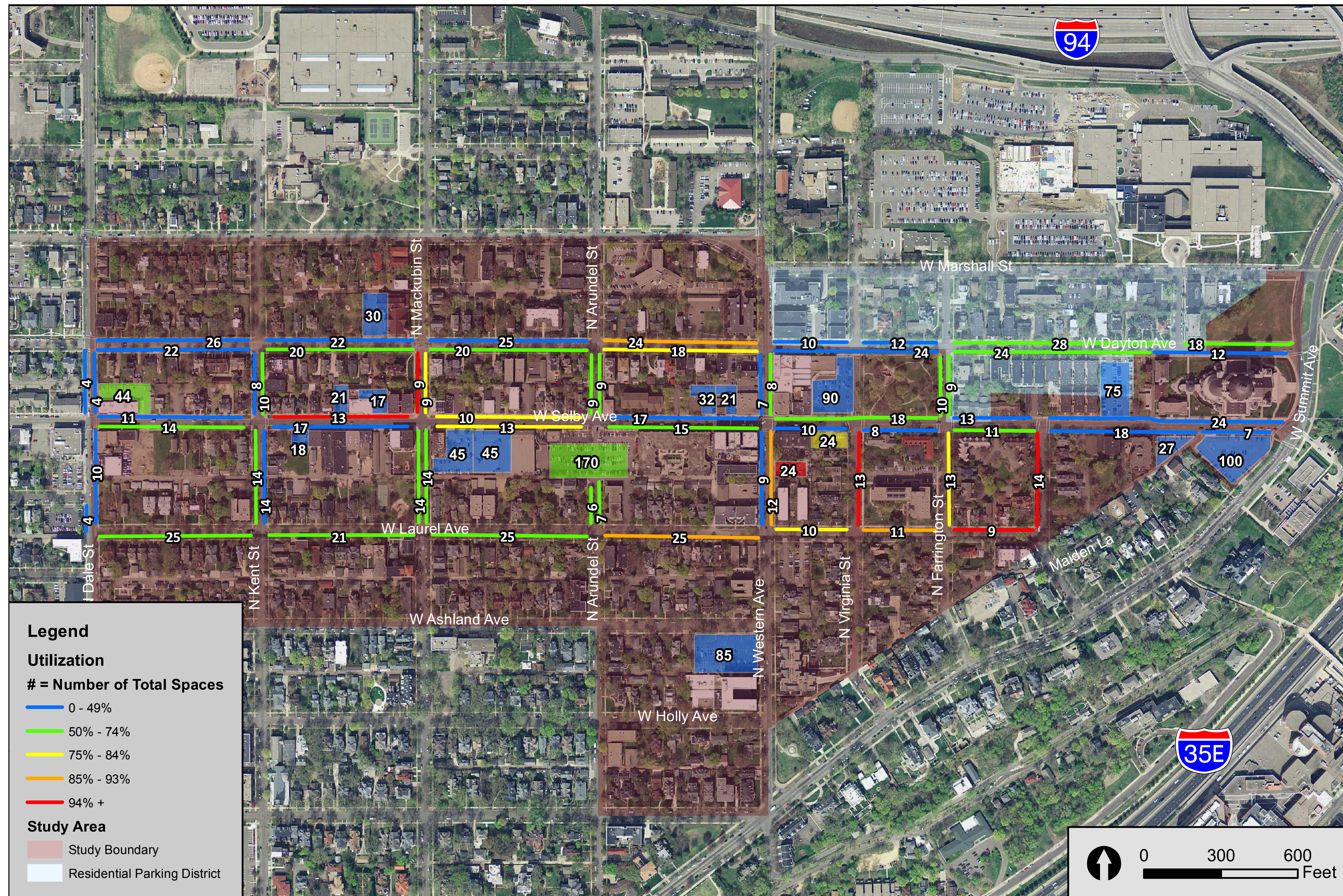


Morning Utilization • 9:00 AM - 10:00 AM • Saturday June 11th



Selby-Western Commercial Area Parking Study

Afternoon Utilization • 12:00 PM - 1:00 PM • Saturday June 11th



Evening Utilization • 6:00 PM - 7:00 PM • Saturday June 11th

