

Parks, Recreation & Open Space Chapter Update

Planning Commission

11/3/17

What we're talking about today

- Metropolitan Council Requirements
- Process and where we are today
- Summary of Existing Plan
- Highlights of Current Draft
- Recent Activity
- What's Next

Metropolitan Council Requirements

- Significantly less than other chapters
- Generally map-heavy

PARKS AND TRAILS

Regional Parks and Trails

- Describe, map, and label the Regional Parks System facilities that are located in your community.
 - If no portion of the Regional Parks System falls within your community, state that fact in your comprehensive plan.
 - Describe, map, and label the federal and state recreational lands within your community, as shown on your System Statement.
 - Depict existing regional parkland with a land use of “Park” (or your community’s equivalent) on your Existing Land Use map.
 - Acknowledge the Council-approved master plan boundaries of regional parks, park reserves, and special recreation features by guiding the properties with a land use of “Park” (or your community’s equivalent) on your Future Land Use map.
-

Local Parks and Trails

- Describe and map your existing and proposed local parks, trails, and recreation facilities.
- Include a capital improvement program for parks and open space facilities as part of your implementation program.

Process and Where We Are



- Public priorities and issues
- Staff issues
- City Council / Planning Commission / Parks Commission issues
- Current Comp Plan

- Implementation focus
- Usability
- Research guidance
- Staff Team review
 - Parks, PED, PW staff
 - **Reps from County, Parks Commission, NPS**

- **Parks Commission review**
- Comprehensive Planning Committee review
- More to come with all chapters combined

WE ARE HERE

Existing Plan

- KEY TRENDS
 - Increasing demand (More, different, better)
 - Decreasing resources
 - Increasing focus on sustainability
 - Increasing focus on active, healthy lifestyles
- STATUS TODAY
 - Same concern over limited resources for capital and O&M
 - Less focus on sustainability
 - More focus on equity and access



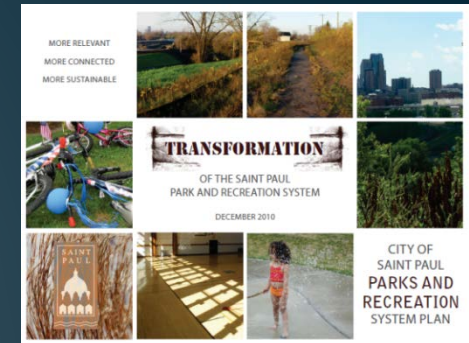
Existing Plan

- Organized into six major strategies:
 - Promote Active Lifestyles
 - Create Vibrant Places
 - Promote A Vital Environment
 - Respond Creatively to Change
 - Innovate with Every Decision
 - Connect the Entire City
- Opportunity for more policy clarity and streamlining; current plan is very specific
- Other plans address park implementation items in more detail...

Other Park Plans (Not exhaustive)

- System Plan (2011)

- Creation of this plan called for in Vision Plan
 - Transform the system into a 21st Century System
- Heavily used by Parks
- Example: Park Specific Recommendations
 - 5.5 Arlington-Arkrigh Park – Improve the tennis, basketball, and sport courts so the park can also function as a neighborhood park.



- Strategic Implementation Plan (2016-2020)

- Specifies projects, budget, and plan reference, updated ~ 1x per year
- Also heavily used by Parks
- Example: 4CVP. Move Seal and Sea Lion Project into Schematic and Design Development while seeking project funding.
 - Responsibility: Design Staff, Campus Staff
 - Budget Impact: \$400,000 Grant from Como Friends
- Great River Passage Plan

Draft Parks Chapter Content

- Highlights
 - As with other chapters, organized into:
 - Intent statement
 - Introduction
 - Goals
 - Policies
 - Maps and figures to come...
 - Simplified policies at higher level than current plan
 - Parks System and Strategic Implementation Plans address details
 - 38 policies across five goals

Draft Parks Chapter Content

- Goals
 1. Equitable allocation of programs, resources, and amenities
 2. Programming and spaces responsive to changing needs
 3. Environmental and economic sustainability
 4. A healthy network of community partnerships
 5. Strong and accessible connections

Timeline of Recent Activity

- August 2016 – September 2017: Working Group Meetings
- July and October 2017: Parks Commission
- 10/17: CPC Meeting for Parks Vol. 1
- 10/19: Parks Mgmt Staff Review
- 10/25: Comp Plan Team (Chapter Leads) Review
- 10/31: CPC Meeting for Parks Vol. 2

Next Steps

- Staff will:
 - process input and revise draft of policies
 - draft implementation content
 - update and consult the Parks Commission
 - prepare supporting maps and graphics
- January 9 – hand out combined draft of all chapters to Comprehensive Planning Committee



Thank you.