

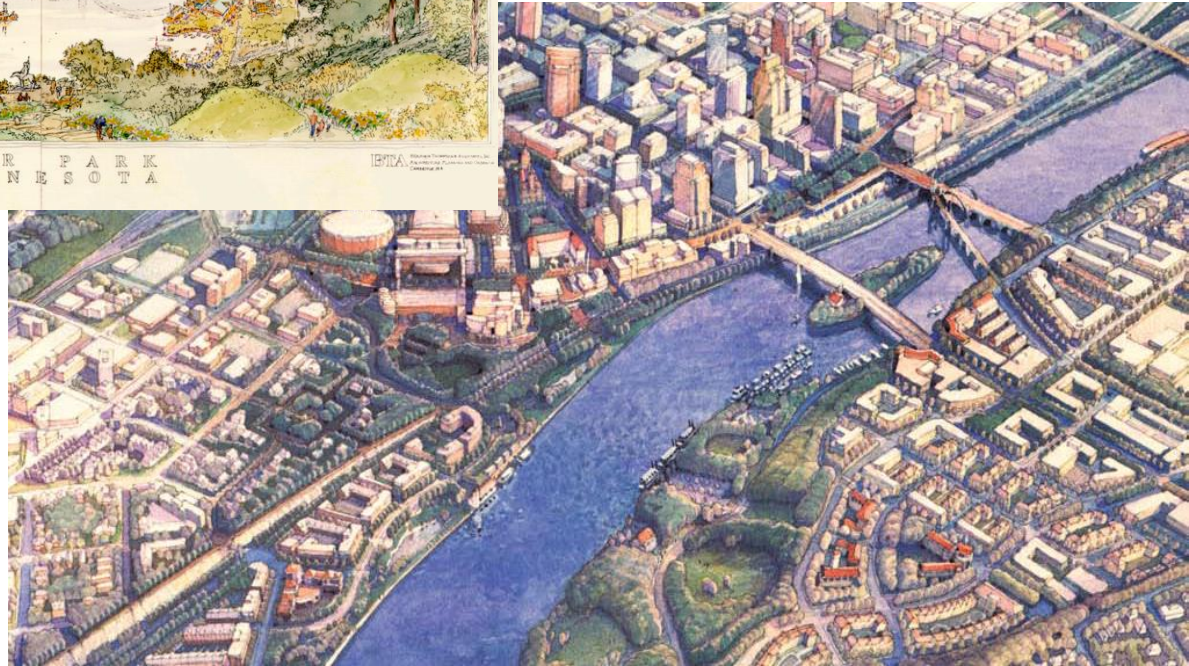
# Saint Paul River Balcony

**Saint Paul River Balcony Master Plan  
Planning Commission  
February 5, 2016**





# Vision : The Great River Park + The Development Framework



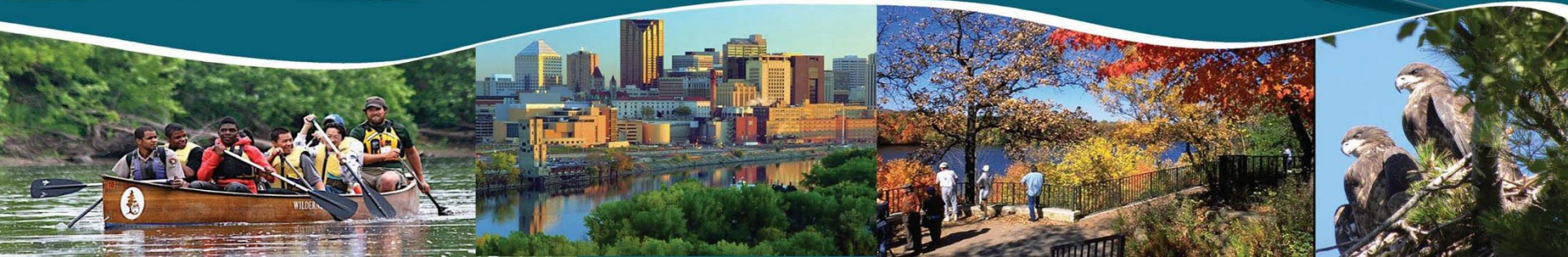


Vision : Great River Passage

# GREAT RIVER PASSAGE

more natural . more urban . more connected

A Master Plan for Saint Paul's 17 Miles of  
Mississippi River Parklands



# Vision : Great River Passage



The Saint Paul River Balcony . . . “will contribute to the economic vitality of Downtown and extend community life to the edge of the river. It will be comprised of a series of parks, linked by continuous broad pedestrian walkways that bring the City to the top of the bluff and the edge of the river.”

# Saint Paul River Balcony : Public Engagement Strategy

## **Goal**

Ensure consistent communication, stakeholder outreach and project information updates at important milestone/decision points throughout the Master Plan and design process.

## **Project Review Team**

Input from the Project Review Team, interested citizens and other community participants was sought through Public Open House events, focus topic roundtables and other venues. The Project Review Team included representatives from:

- + City of Saint Paul Staff (PED, Parks, Public Works, HPC)
- + Ramsey County Staff (RCRRA, Property Management)
- + Saint Paul Design Center
- + CapitolRiver Council
- + Science Museum of Minnesota
- + Public Art Saint Paul
- + Exeter Group
- + District Energy

## **Meeting Type + Purpose**

- Project Review Team Meetings - Design Review and Critique
- Design Team Workshops - Discuss and Prepare Design Options
- Focus Topic Roundtables - In-Depth Discussion and Resolution of Key Issues
- Public Open House - Information Update and Public Input



# History + Cultural Resources

## St. Paul's River Balcony: A Land Use History and Review of Historic Resources

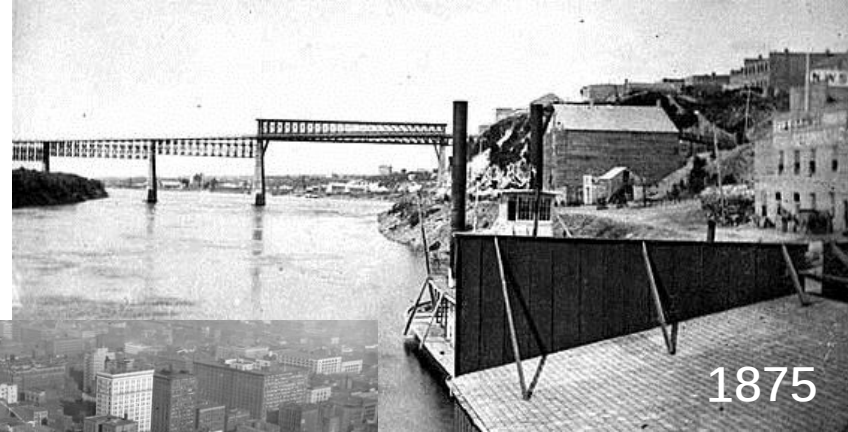


Prepared for the  
City of St. Paul

by

Landscape Research LLC  
St. Paul, MN

Draft  
August 2015



# Precedent Research : Access + Connections

## OLYMPIC PARK

SEATTLE, WA

Designer: Weiss/Manfredi

The park consists of a 9-acre outdoor sculpture museum and beach. Envisioned as a new urban model for sculpture parks, this project is located on Seattle's last undeveloped waterfront property – an industrial brownfield site sliced by train tracks and an arterial road. The design connects three separate sites with an uninterrupted Z-shaped "green" platform, descending forty feet from the city to the water, capitalizing on

views of the skyline and Elliott Bay, and rising over existing infrastructure to reconnect the urban core to the revitalized waterfront.

- 1 Moseley Path Entrance
- 2 The Valley
- 3 Gates Amphitheater
- 4 Mimi Gardner Gates Bridge



Budget: \$85 million  
Date: 2007



# Precedent Research : Parks + Trails + Open Space

THE CITYDECK  
GREEN BAY, WI  
Designer: STOSS

- 1 Shopko Landing Extending toward Walnut Street
- 2 CityDeck Riverfront Boardwalk
- 3 Open Programming Runs Consistently Throughout the Site



Budget: \$14 million  
Date: 2012



# Study Area : Assets + Destinations



# Approach : district response to the Great River (valley)





# Concept Master Plan : Elements + Objectives

## 1\_Natural Resources :

### river systems and the urban ecology

- Integrate urban edge with natural systems (naturalize)
- Protect, restore, reconnect habitat
- Daylight streams, reveal historic drainage patterns and river reaches
- Provide river-based programming and identity

## 2\_Parks + Trails + Open Space :

### placemaking and a dynamic public realm

- Provide visual and physical connections to the river (people should see and touch it)
- Create signature place/primary destination in the city
- Create multi-functional greenways connecting to adjacent neighborhoods
- Integrate river-based recreational activities
- Provide a variety of places/spaces that invite large and small group use

## 3\_Economic Development :

### Land value and private sector investment

- Enhance property value, create the market and attract new development
- Building design compatible with surrounding city/environmental context
- Promote connectivity; integrate multi-modal transportation systems
- Development patterns reinforce river connections
- Identify, preserve and enhance critical river views
- Respect for value of the working river

## 4\_Sustainability :

### district systems and the 21st Century City

- Extend district energy, heating and cooling (explore Eco-District definition/components)
- Clean, store and reuse stormwater before release to the river
- Promote pedestrian and bicycle elements to reduce vehicle miles traveled
- Introduce opportunities for food production (green roof, public space, aqua/hydroponics)

## 5\_Access + Connections :

### linked assets and the Big Idea

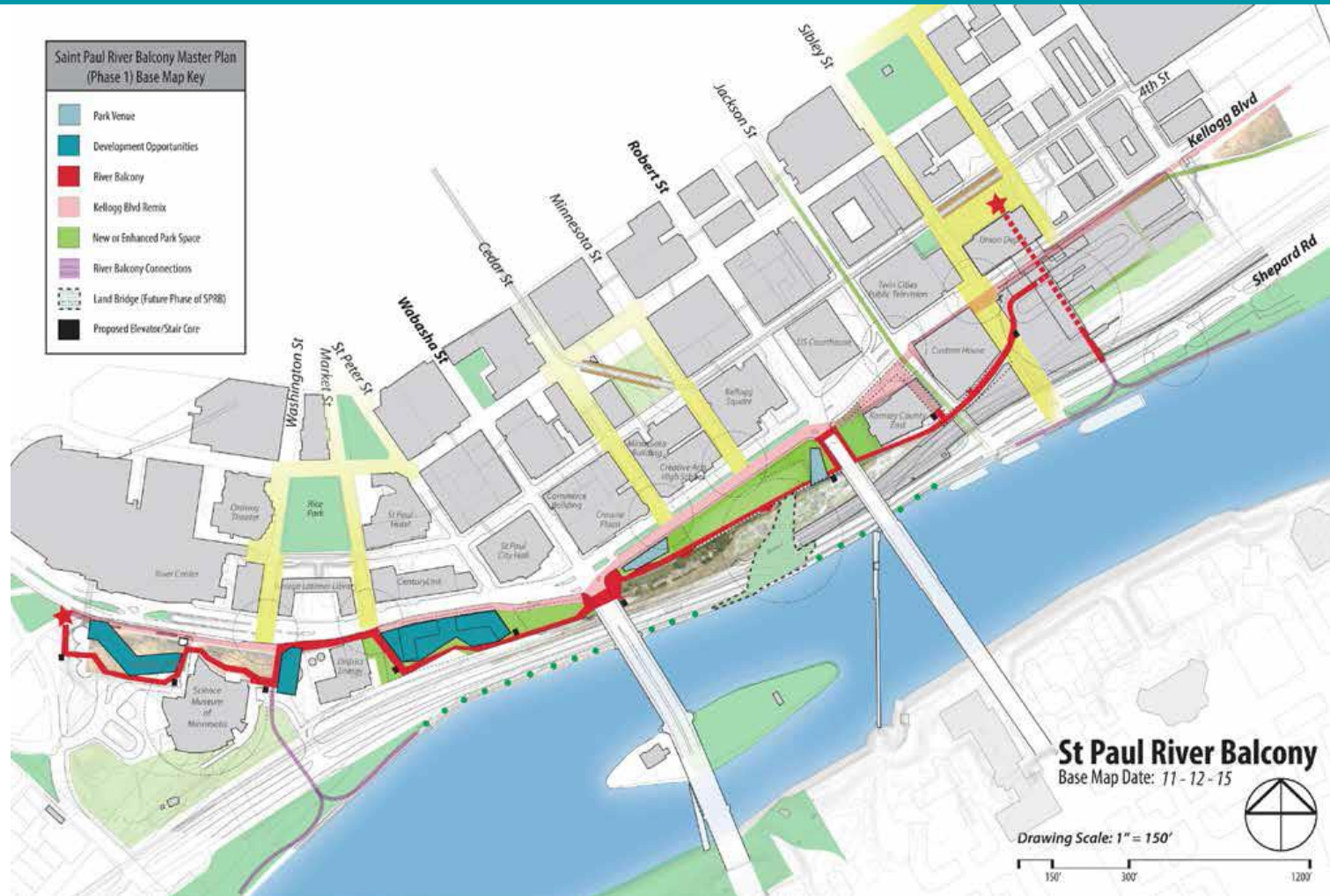
- Overcome barriers to river access (visual and physical)
- Provide pedestrian infrastructure and wayfinding s to

## 6\_Art + History + Culture :

### expression of what people take with them when they leave

- Celebrate river ecology, geology and history through art and interpretive programming

# Concept Master Plan



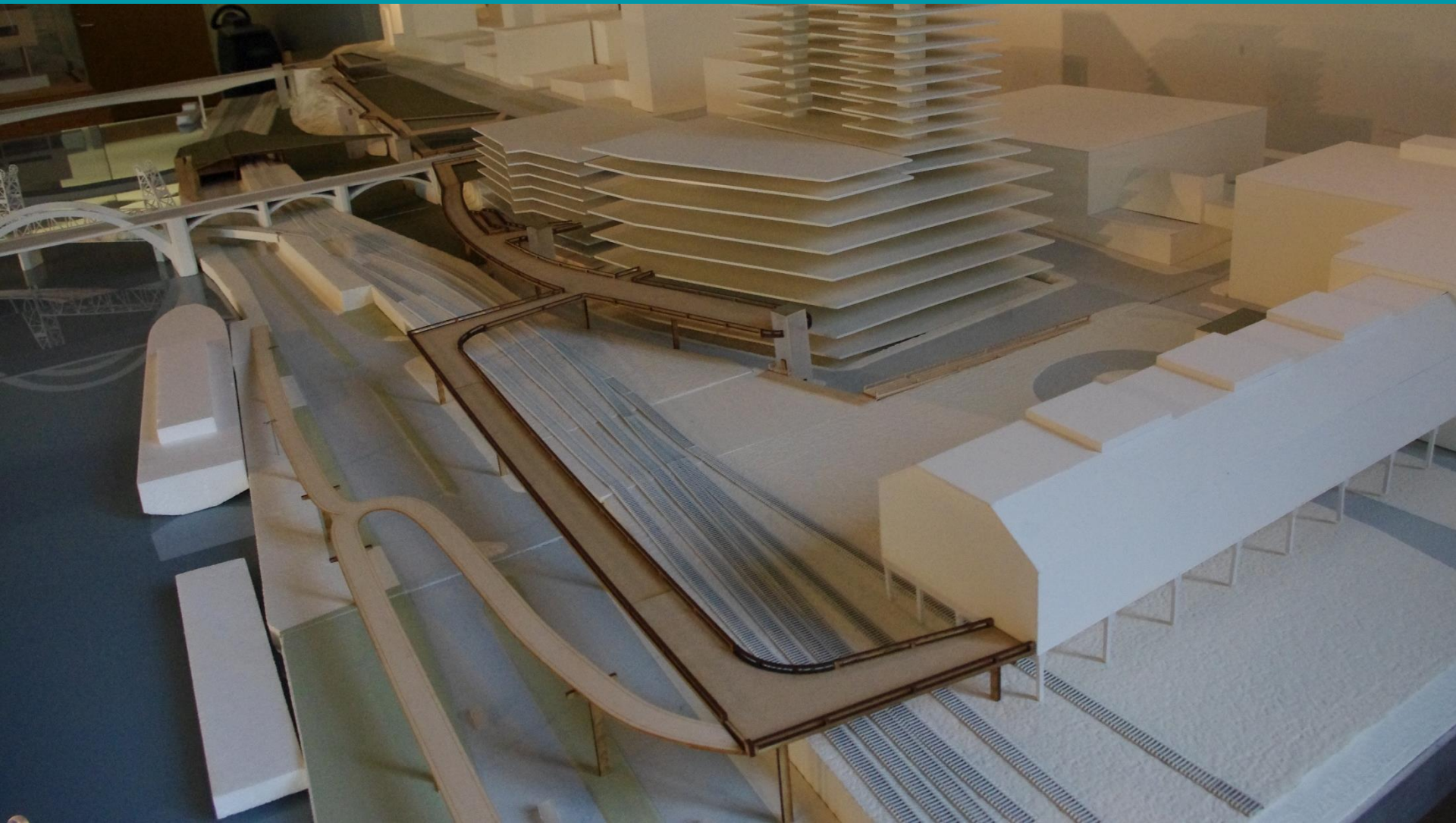


# Concept Master Plan : Scale Model





# Concept Master Plan : Scale Model



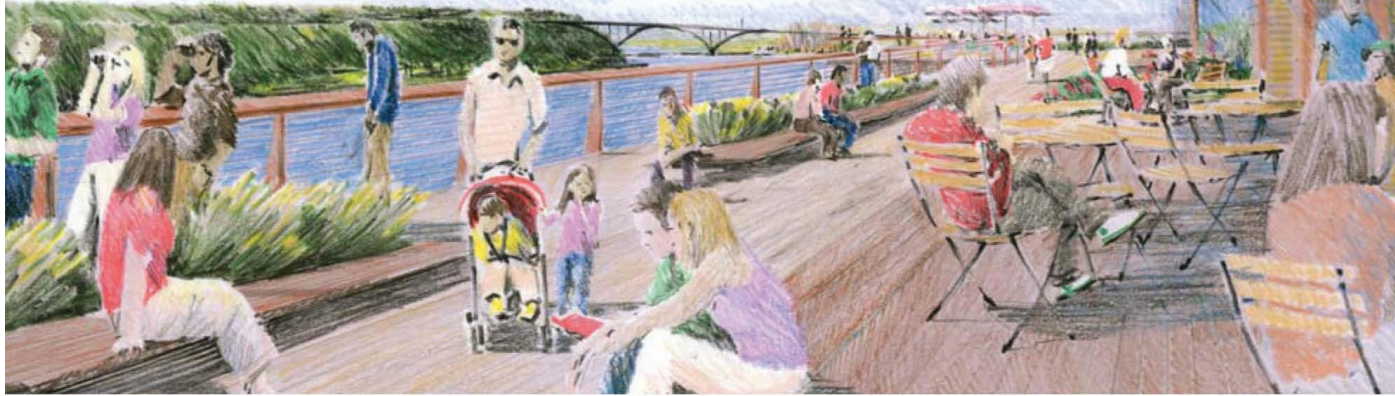


# Concept Master Plan : Public Open House

## Introducing Saint Paul's River Balcony

Union Depot (214 Fourth Street East, Saint Paul)

Thursday, September 24, 5-7 p.m. (program at 6 p.m.)



One of the most popular ideas to come out of the Great River Passage Plan is the River Balcony – a 1.5-mile elevated pedestrian path along the downtown river bluff from the Science Museum to the Union Depot. The River Balcony is envisioned as a premier location for people to gather, eat, shop, and reconnect to the Mississippi River.

Join us at an open house to learn more about the conceptual design of the River Balcony, view a table top model of the pathway, and give us your feedback on design, programming, public art, stormwater management, and economic development opportunities.

Part of Saint Paul's effort to create vibrant places and spaces

[stpaul.gov/RiverBalcony](http://stpaul.gov/RiverBalcony)



## Saint Paul River Balcony: Next Steps

- Complete River Balcony Master Plan – February 2016
- Phase One (Robert Street to Union Depot) Schematic Design– March 2016
- Ramsey County RFQ for Ramsey County West – March 2016
- Phase One Development Design – late 2016-early 2017
- River Balcony Prototyping Festival – November 2015 – October 2016
- Phase One Construction Documents - 2018