

SAINT PAUL RIVER BALCONY



MASTER PLAN

Draft for public review
March 3, 2017



GREAT RIVER PASSAGE

more natural . more urban . more connected

A Master Plan for Saint Paul's 17 Miles of Mississippi River Parklands

Addendum to Saint Paul's
Comprehensive Plan



Adopted April 10, 2013



- **Contribute to the economic vitality of downtown, extend community life to the river.**
- **Series of parks, linked by continuous broad pedestrian walkways.**
- **Bring the city to the top of the bluff and the edge of the river.**



Acknowledgments

Project Review Team

Nina Axelson, District Energy Saint Paul
Bill Englund, Capitol River Council (District 17)
Don Ganje, Saint Paul Parks & Recreation
Tim Griffin, Saint Paul Design Center
Patrick Hamilton, Science Museum of Minnesota
Tracey Kinney, Saint Paul Design Center
Jean Krueger, Ramsey County Regional Rail Authority
Amanda Lovelee, Public Art Saint Paul
Eriks Ludins, Saint Paul Public Works
Josh Olson, Ramsey County Planning
Amy Spong, Saint Paul PED/HPC
Ellen Stewart, Saint Paul Parks & Recreation
Lucy Thompson, Saint Paul Planning & Economic Development,
Project Manager
Herb Tousley, Exeter Group LLC
Marcus Young, Public Art Saint Paul

Design Team

John Carmody, Metropolitan Design Center
Bob Close, Metropolitan Design Center
Scott Eloffson, BKV Group
Brady Halverson, BKV Group
David Horner, Metropolitan Design Center
Bruce Jacobson, Metropolitan Design Center, Project Manager
Mic Johnson, Metropolitan Design Center
Mike Krych, BKV Group
Miss Emily Lowery, Metropolitan Design Center
Jonathan Rozenbergs, Metropolitan Design Center
Anne Rykken, Graphic Design

Vision

The River Balcony is envisioned as a publicly-accessible pathway connecting public spaces and bluff-side redevelopment sites from the Science Museum to Union Depot. It will be designed to accommodate walking, outdoor seating, gathering and related public activities; and to be a catalyst for economic development.

Goals

The River Balcony will:

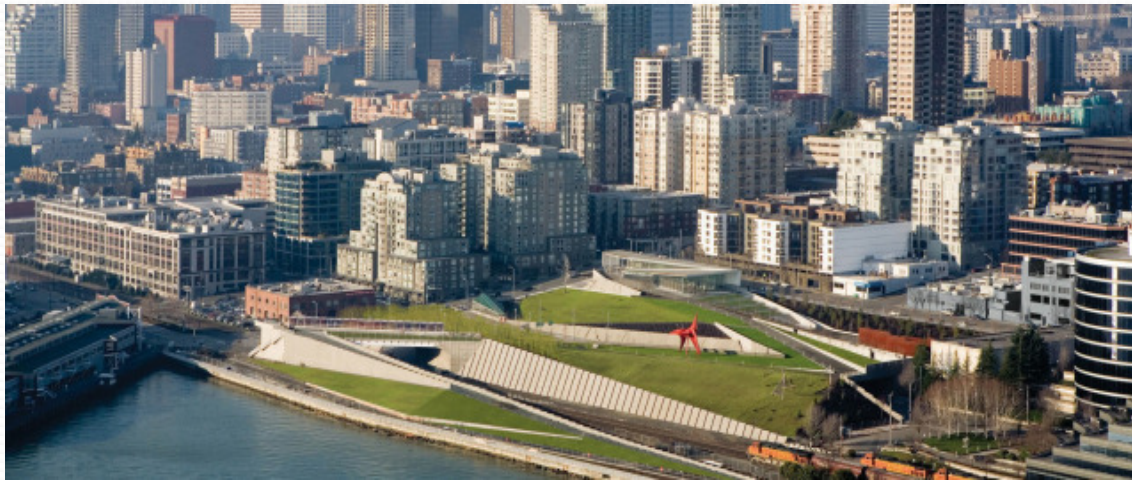
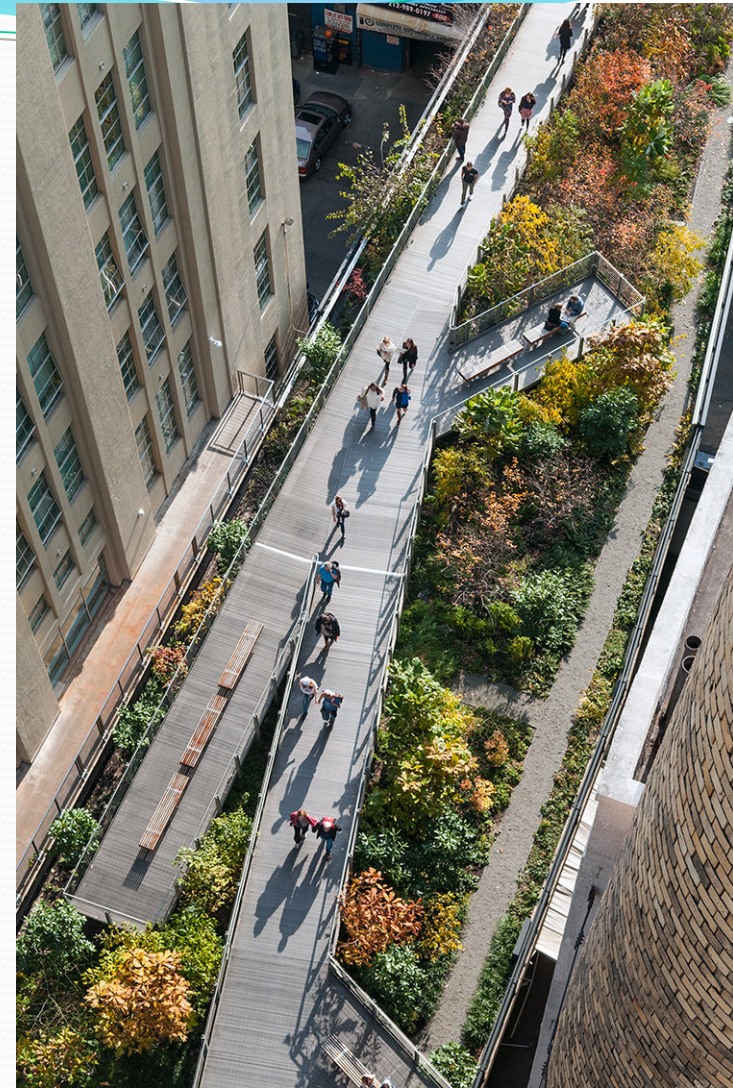
- reconnect downtown to the Mississippi River visually and physically;
- provide a public linear path along the downtown river bluff with occasional vertical connections to the river's edge;
- activate private development on the Ramsey County West/Adult Detention Center, Ramsey County East and Custom House sites; and
- connect public spaces and private development sites along the river's edge in downtown.

General Design Principles

1. The River Balcony is a **public space, accessible to all**, at all times of the day and during all seasons.
2. The main purpose of the River Balcony is to provide **visual and physical connections** between downtown and the Mississippi River.
3. The River Balcony is an **integral part of a larger public realm network** comprising the Capital City Bikeway, City and regional parks and trails, streets, plazas and skyways.
4. The River Balcony is **both a horizontal** (linear) **and vertical** (from upper bluff to river's edge) system of movement.
5. The River Balcony will be a **fundamental feature of new development** on private property along the bluff, including Custom House and the Ramsey County riverfront properties.
6. The River Balcony will be designed to **add value** to adjacent private development.
7. The River Balcony will be **built with high-quality, durable materials**.
8. The River Balcony will be designed as a **coherent series of public spaces**, with overall continuity of design, but allowing for site- or district-specific expressions of place.
9. The River Balcony will be designed to **be a "light touch"** on the bluff landscape.
10. The River Balcony will incorporate **natural features** as much as possible, recognizing that some areas will be more predominantly hard-surfaced.







Saint Paul River Balcony Master Plan

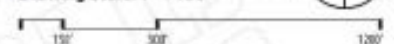
Base Map Key

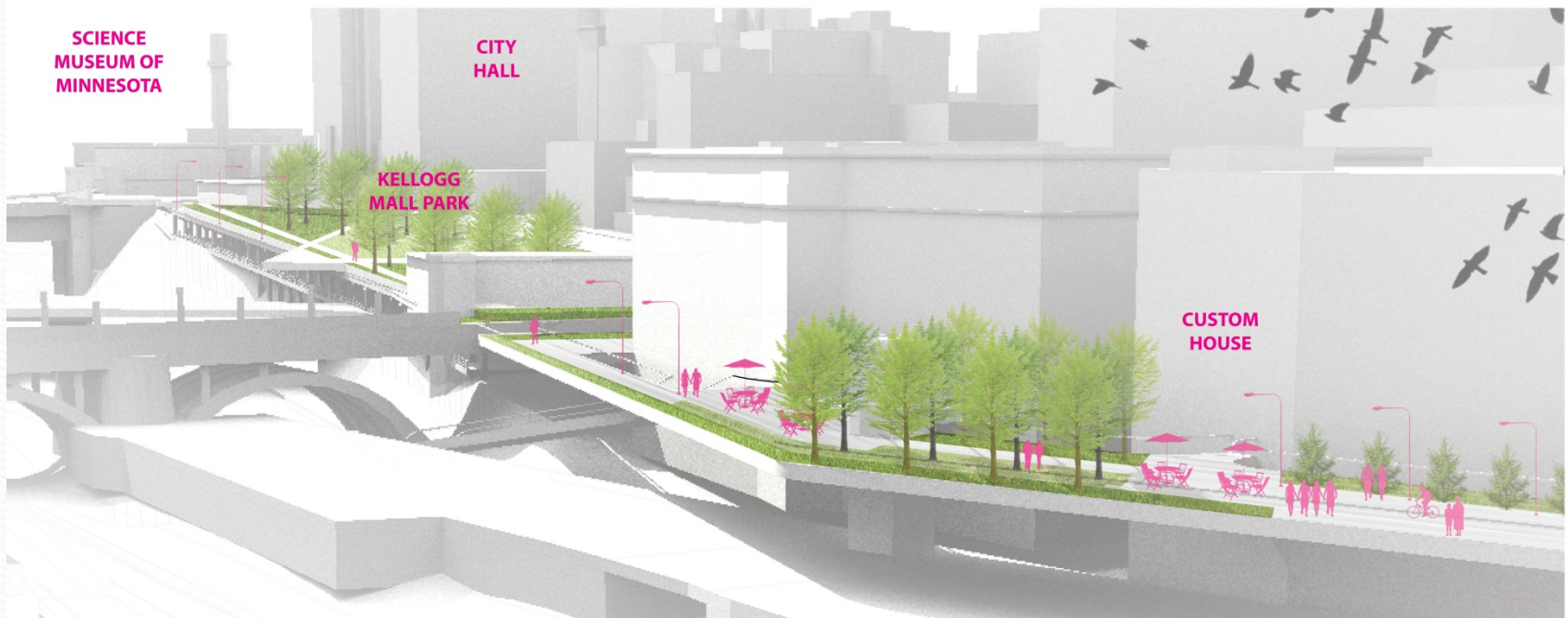
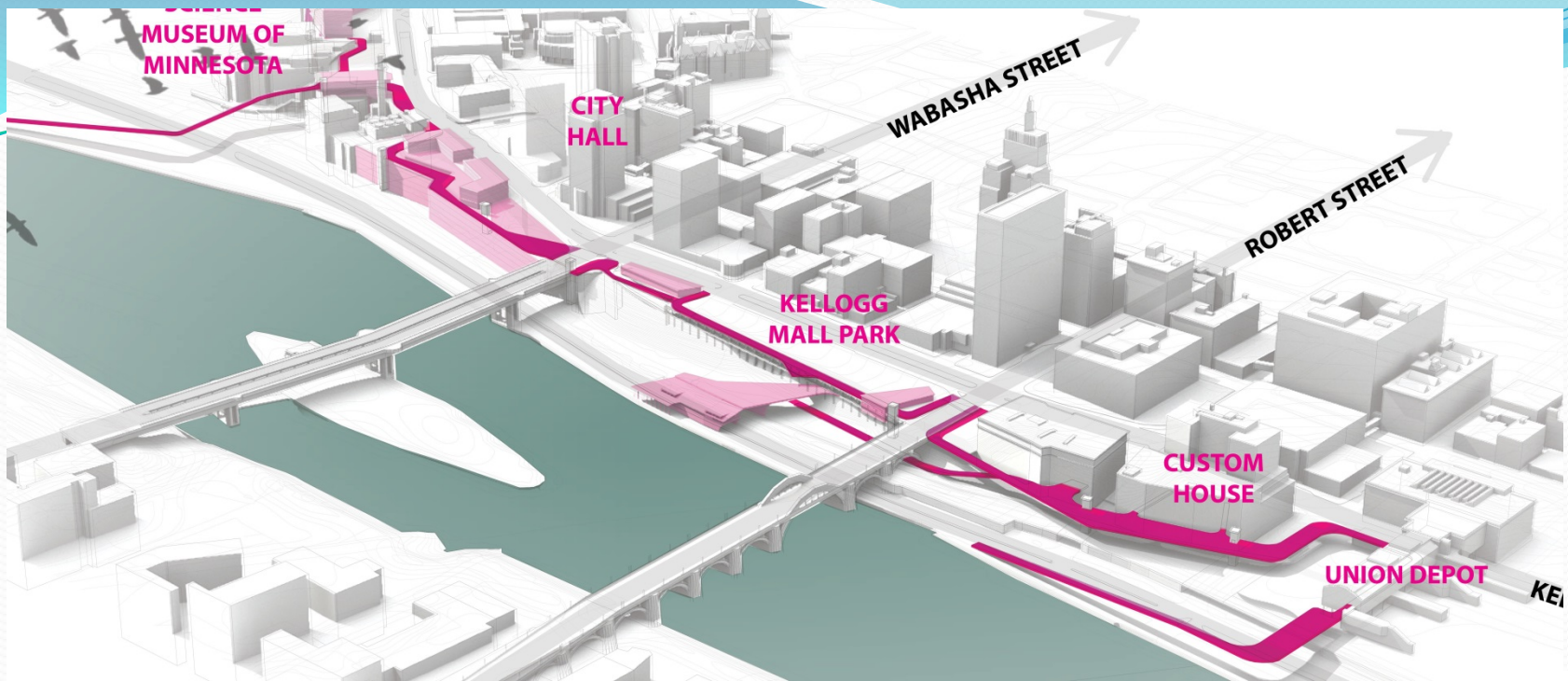
- | | |
|---|--|
|  Park Venue |  New or Enhanced Park Space |
|  Development Opportunities |  River Balcony Vertical Connections |
|  River Balcony |  Land Bridge (Future Phase of SPRB) |
|  Kellogg Blvd Convertible Street |  Proposed Elevator/Stair Core |
|  Physical & Visual Connections | |



Illustrative Master Plan
Saint Paul River Balcony
 Base Map Date: 9-7-16

Drawing Scale: 1" = 150'





River Balcony Design Guidelines

- Identity
- Connected pedestrian amenities
- Balcony structure
- Materials
- Landscaping
- District (utility) systems
- Furnishings
- Retaining walls
- Paving
- Railings
- Wayfinding signage
- Lighting
- Vertical circulation towers
- Historic resources
- Public art

Private Development Guidelines

- Site development
- Building form and façade
- Landscaping
- Historic preservation
- Sustainability and district systems
- Furnishings

Next Steps

- April 7: Planning Commission releases RBMP for public review
- HPC and Parks Commission review - underway
- May 19: Planning Commission holds public hearing
- June: Planning Commission recommends RBMP to City Council as amendment to *Great River Passage Master Plan*
- Transition from planning to schematic design, fundraising, construction, ownership and management structure – PED to Parks GRP Division

