



## CITY OF SAINT PAUL

*Christopher B. Coleman, Mayor*

25 West Fourth Street  
Saint Paul, MN 55102

Telephone: 651-266-6700  
Facsimile: 651-228-3220

### TRANSPORTATION COMMITTEE OF THE PLANNING COMMISSION

Monday, March 27, 2017, 4:00 p.m. – 5:30 p.m.

*All meetings are held in the City Hall Annex 13<sup>th</sup> floor  
Conference room at 25 West 4<sup>th</sup> Street in Saint Paul*

1. Public Works 5-Year Plan – Anne Weber (Public Works) 20 minutes
2. St. Anthony Ave. Traffic Calming – Reuben Collins (Public Works) 30 minutes
3. Automated Vehicles: Implications for Saint Paul – Bill Dermody (PED) 40 minutes

#### *Upcoming Transportation Committee Meetings*

- April 10
- April 24
- May 8

---

*Meetings are open to the public. The Chair may allow five minutes for informal public comment (from non-committee members) at the beginning of each agenda as needed. Additional time may be allocated for comments or further discussion at the discretion of the Chair. Meetings will be cancelled if there is not a quorum expected, or if there are no agenda items. For additional information on the Transportation Committee of the Planning Commission, please visit our website at [bit.ly/StPaulITC](http://bit.ly/StPaulITC) or contact Bill Dermody at [Bill.Dermody@ci.stpaul.mn.us](mailto:Bill.Dermody@ci.stpaul.mn.us) or 651-266-6617.*

## Transportation Committee Staff Report

*Committee date: March 27, 2017*

<b>Project Name</b>	<i>Public Works 5 Year Capital Plan</i>
Geographic Scope	<i>Citywide</i>
Ward(s)	
District Council(s)	
Project Description	<i>Public Works 5 Year Capital Plan</i>
Project Webpage	<i>NA</i>
Project Contact, email/phone	<i>Anne Weber, <a href="mailto:anne.weber@ci.stpaul.mn.us">anne.weber@ci.stpaul.mn.us</a>, 651-266-6245</i>
Lead Agency/Department	<i>Saint Paul Public Works Department</i>
Purpose of Project/Plan	<i>To plan for Public Works capital projects over a 5 year period.</i>
Planning References	
Project stage	
General Timeline	<i>2017-2021</i>
District Council position (if applicable)	
Level of Committee Involvement	<i>Inform</i>
Previous Committee action	<i>NA</i>
Level of Public Involvement	<i>Inform</i>
Public Hearing	<i>No</i>
Public Hearing Location	
Primary Funding Source(s)	
Cost	

Staff recommendation	<i>NA</i>
Action item requested of the Committee	<i>NA</i>
Committee recommendation	<i>NA</i>
Committee vote	<i>NA</i>

## Level of Committee Involvement

<b>INFORM:</b> Informational briefings	<i>Projects that are in implementation phase; projects from other jurisdictions; policy documents from other agencies/jurisdictions</i>
<b>ADVISE AND CONSENT:</b> Informational briefings with policy discussion, general directives to staff for follow-through	<i>Project and program reviews primarily initiated by staff; or involvement with program development by others</i>
<b>INVOLVE:</b> Discussions to develop directions for projects & programs	<i>Policy involvement from inception through design, inc. policy development; environmental documentation,</i>
<b>DEVELOPMENT OF PROJECT/PROGRAM:</b> <i>Discussion to form process; screening of ideas; development of recommendations; and managing outreach to the community</i>	<i>Committee has primary responsibility for concept development, and/or overseeing participation process, and/or making specific recommendations to Planning Commission, Mayor and/or City Council</i>

## Transportation Committee Staff Report

Committee date: 3/27/17

<b>Project Name</b>	<b><i>Saint Anthony Traffic Calming</i></b>
Geographic Scope	<i>Saint Anthony Ave, Prior to Snelling</i>
Ward(s)	<i>4</i>
District Council(s)	<i>13-Union Park</i>
Project Description	<i>Install traffic Calming and Bicycle Facilities</i>
Project Webpage	<i>Stpaul.gov/saint-anthony-traffic-calming</i>
Project Contact, email/phone	<i>Reuben Collins, reuben.collins@ci.stpaul.mn.us</i>
Lead Agency/Department	<i>Public Works</i>
Purpose of Project/Plan	<i>Improve safety for people driving, biking, and walking</i>
Planning References	<i>Saint Paul Bicycle Plan</i>
Project stage	<i>Final Design</i>
General Timeline	<i>Implementation Summer 2017</i>
District Council position (if applicable)	<i>Support</i>
Level of Committee Involvement	<i>Inform</i>
Previous Committee action	<i>None</i>
Level of Public Involvement	<i>involve</i>
Public Hearing	<i>Noneeee</i>
Public Hearing Location	<i>N/A</i>
Primary Funding Source(s)	<i>8-80 Bicycle Lane Striping Fund</i>
Cost	<i>TBD</i>

Staff recommendation	<i>Implement bikeway as proposed in 2017.</i>
Action item requested of the Committee	<i>No action is requested from the committee</i>
Committee recommendation	<i>To be filled in at the meeting</i>
Committee vote	<i>To be filled in at the meeting</i>

### Level of Committee Involvement

<b>INFORM:</b> Informational briefings	Projects that are in implementation phase; projects from other jurisdictions; policy documents from other agencies/jurisdictions
<b>ADVISE AND CONSENT:</b> Informational briefings with policy discussion, general directives to staff for follow-through	Project and program reviews primarily initiated by staff; or involvement with program development by others
<b>INVOLVE:</b> Discussions to develop directions for projects & programs	Policy involvement from inception through design, inc. policy development; environmental documentation,
<b>DEVELOPMENT OF PROJECT/PROGRAM:</b> Discussion to form process; screening of ideas; development of recommendations; and managing outreach to the community	Committee has primary responsibility for concept development, and/or overseeing participation process, and/or making specific recommendations to Planning Commission, Mayor and/or City Council



# DEPARTMENT OF PUBLIC WORKS

## FIVE YEAR CAPITAL PLAN

Subject to change. Updated 03/17/2017.

2017 PROJECTS	2018 PROJECTS	2019 PROJECTS	2020 PROJECTS	2021 PROJECTS
<div>SPS PROJECTS (Street Improvement Bonds)</div> <div>Idaho/Atlantic Residential6,000,000 Wheelock Parkway - Victoria to Danforth4,750,000 Jackson Street - 11th to University4,063,000 Como Ave - Raymond to Commonwealth3,470,000 (Funded with MSA) Wabasha - Fillmore to Plato carryover TOTAL SIB\$14,813,000</div> <div>CIB PROJECTS Kellogg/3rd Street Bridge - Design1,125,000 Lexington - Univ to Lincoln (Removals)750,000 Margaret Street Bicycle Boulevard400,000 Rice Street - Pennsylvania to Sycamore54,000 I-35E Bike Trail - Grand to St. Clair579,000 Greenbrier/Vento Connection - Design45,000 Maryland @ Edgerton Channelization50,000 Signalized Xing - Eastern Heights School63,000 Sidney/State/Robert Intersect Redesign50,000 Downtown Sidewalk Tree Preservation96,000 Bike Racks on the East Side20,000 Bicycle, Pedestrian &amp; Traffic Safety235,000 Signalized Intersection Safety Improve120,000 RR Crossing Safety Improvements10,000 Bridge Enhancements Program235,000 Stairway Repair &amp; Replacement Program120,000 TOTAL CIB\$3,952,000</div> <div>MSA PROJECTS Summit Avenue Bridge over Ayd Mill1,025,000 Forest Street Bridge - Design375,000 Battle Creek - Upper Afton to Park Ridge2,350,000 Rice Street - Pennsylvania to Sycamore1,928,000 Lighting Imp: 6th-Arcade to Johnson Pkwy656,000 Como Avenue Lighting Improvements81,000 Maryland @ Edgerton Channelization200,000 Phalen Blvd @ Mississippi - Traffic Signal125,000 Smith Avenue Traffic Signals453,000 SPS Traffic Signals on Arterials675,000 Signalized Intersection Safety Improve125,000 RR Crossing Safety Improvements40,000 MSA Contingency367,000 TOTAL MSA\$8,400,000</div> <div>Local Street, Alley, Sewer and Lighting (Funded by Assessment financing) ROW (FUND 255) Sidewalk Reconstruction Program (ROW)1,749,000 (Pending ROW Fund Decision)</div>	<div>SPS PROJECTS (Street Improvement Bonds)</div> <div>Woodlawn Jefferson Residential -Phase I4,050,000 Como Avenue - Commonwealth to Eustis6,050,000 Wheelock Parkway - Danforth to Western5,000,000 TOTAL SIB\$15,100,000</div> <div>CIB PROJECTS Margaret Street Bike Boulevard320,000 Bicycle, Pedestrian &amp; Traffic Safety250,000 Signalized Intersection Safety Improve125,000 RR Crossing Safety Improvements10,000 Bridge Enhancements Program250,000 Stairway Repair &amp; Replacement Program125,000 TOTAL CIB\$1,080,000</div> <div>MSA PROJECTS Summit Avenue Bridge over Ayd Mill1,253,000 Lafayette Bridge - University to Otsego2,095,000 Kellogg/3rd Street Bridge1,187,000 Dale Street Bridge over I941,000,000 Cleveland Ave - Hoyt to Larp (County)200,000 High Bridge Redeck - Lights/Rails800,000 Downtown Traffic Signal Enhancements500,000 SPS Traffic Signals on Arterials600,000 Signalized Intersection Safety Improve125,000 RR Crossing Safety Improvements40,000 MSA Contingency300,000 TOTAL MSA\$8,100,000</div> <div>Local Street, Alley, Sewer and Lighting (Funded by Assessment financing) ROW (FUND 255) Sidewalk Reconstruction Program (ROW)?</div>	<div>SPS PROJECTS (Street Improvement Bonds)</div> <div>Woodlawn/Jefferson Residential -Phase II6,000,000 Wheelock Pkwy - Western to Rice8,790,000 TOTAL SIB\$14,790,000</div> <div>CIB PROJECTS Bicycle, Pedestrian &amp; Traffic Safety250,000 Signalized Intersection Safety Improve125,000 RR Crossing Safety Improvements10,000 Bridge Enhancements Program250,000 Stairway Repair &amp; Replacement Program125,000 TOTAL CIB\$760,000</div> <div>MSA PROJECTS Summit Avenue Bridge over Ayd Mill797,000 Lafayette Bridge - University to Otsego2,236,750 Johnson Parkway - Burns to 7th (Design)1,718,750 Cleveland Ave - Buford to Hoyt (County)300,000 Fairview Avenue - Shields to University1,120,000 Maryland @ Edgerton Channelization500,000 Snelling Ave @ Hoyt - Traffic Signal37,500 Snelling Ave @ Midway - Traffic Signal75,000 Downtown Traffic Signal Enhancements750,000 SPS Traffic Signals on Arterials150,000 Signalized Intersection Safety Improve125,000 RR Crossing Safety Improvements40,000 MSA Contingency250,000 TOTAL MSA\$8,100,000</div> <div>Local Street, Alley, Sewer and Lighting (Funded by Assessment financing) ROW (FUND 255) Sidewalk Reconstruction Program (ROW)?</div>	<div>SPS PROJECTS (Street Improvement Bonds)</div> <div>Griggs/Scheffer Residential - Phase I5,600,000 Edgcumbe Road - St. Paul to Fairview5,430,000 Como Avenue - Eustis to City Limits2,320,000 TOTAL SIB\$13,350,000</div> <div>CIB PROJECTS Jackson Street Bridge (County)300,000 Johnson Parkway - Burns to 7th (Const)250,000 Expo Area - Safe Routes to School280,125 Washington Tech - Safe Routes to School459,000 Safe Routes to Schools125,000 Bicycle, Pedestrian &amp; Traffic Safety250,000 Signalized Intersection Safety Improve125,000 RR Crossing Safety Improvements10,000 Bridge Enhancements Program250,000 Stairway Repair &amp; Replacement Program125,000 TOTAL CIB\$2,174,125</div> <div>MSA PROJECTS Jackson Street Bridge - Penn to Acker1,000,000 Cleveland Ave - Como to Buford (County)400,000 Tedesco - Lafayette to Payne1,174,875 Johnson Parkway - Burns to 7th (Const)1,375,000 Como Avenue Trail - Raymond to Hamline2,845,125 Robert Street M&amp;O Mn/DOT -Traff. Signals1,100,000 SPS Traffic Signals on Arterials450,000 Signalized Intersection Safety Improve125,000 RR Crossing Safety Improvements40,000 MSA Contingency240,000 TOTAL MSA\$8,750,000</div> <div>Local Street, Alley, Sewer and Lighting (Funded by Assessment financing) ROW (FUND 255) Sidewalk Reconstruction Program (ROW)?</div>	<div>SPS PROJECTS (Street Improvement Bonds)</div> <div>Griggs/Scheffer Residential - Phase II5,900,000 Summit Avenue - Victoria to Lexington4,520,000 Wheelock Pkwy - Edgerton to Arcade4,100,000 TOTAL SIB\$14,520,000</div> <div>CIB PROJECTS EB Kellogg Blvd Bridge @ RiverCentre2,000,000 Payne/Phalen Sidewalk Infill487,500 (Area: Earl, Duluth, Maryland, Case) Safe Routes to Schools125,000 Bicycle, Pedestrian &amp; Traffic Safety250,000 Signalized Intersection Safety Improve125,000 RR Crossing Safety Improvements10,000 Bridge Enhancements Program250,000 Stairway Repair &amp; Replacement Program125,000 TOTAL CIB\$3,372,500</div> <div>MSA PROJECTS EB Kellogg Blvd Bridge @ RiverCentre1,369,257 Prior - St. Anthony to University2,400,000 Wabasha - Kellogg to 6th St3,000,000 Snelling/Lexington - ITS Traffic Mgmt1,125,743 SPS Traffic Signals on Arterials600,000 Signalized Intersection Safety Improve125,000 RR Crossing Safety Improvements40,000 MSA Contingency240,000 TOTAL MSA\$8,900,000</div> <div>Local Street, Alley, Sewer and Lighting (Funded by Assessment financing) ROW (FUND 255) Sidewalk Reconstruction Program (ROW)?</div>



2017 PROJECTS		2018 PROJECTS		2019 PROJECTS		2020 PROJECTS		2021 PROJECTS	
CITY MILL & OVERLAY PROJECTS		CITY MILL & OVERLAY PROJECTS		CITY MILL & OVERLAY PROJECTS		CITY MILL & OVERLAY PROJECTS		CITY MILL & OVERLAY PROJECTS	
\$2,307,925		\$2,380,515		\$2,392,507		\$2,367,280		\$2,508,565	
Kellogg Blvd - John Ireland to W. 7th		Franklin Avenue - TH280 to Pelham		Saint Clair Avenue - Fairview to Snelling		Western Avenue - Selby to Summit		Fairview Avenue - University to Minnehaha	
Stillwater Road - Hazel to McKnight		Arlington Avenue - Rice to Jackson		Grand Avenue - Dale to Pleasant		Territorial Avenue - Berry to Raymond		Pascal Street - Concordia to University	
Third Street - White Bear to McKnight		Arlington Avenue - E. Shore to White Bear		Prior Avenue - Marshall to I-94		Saint Paul Avenue - Edgcumbe to 7th		Concordia Avenue - Lexington to Marion	
Johnson Parkway - Phalen to E. Shore Dr		Western Avenue - Como to Front		Prior Avenue - University to Minnehaha		Eustis Street - TH280 to Como		Jefferson Avenue - 7th to Victoria	
Ramsey Street - Summit to Grand		Stryker Avenue - Baker to Annapolis		Miss River Blvd - Marshall to Randolph		Cleveland Avenue - Itasca to MRB		Saint Anthony Avenue - Snelling to Victoria	
Grand Avenue - Cretin to Cleveland		Forest Street - Maryland to 7th		Jackson Street - University to Penn		Earl Street - Hudson to Ross		Pedestrian Ramps with Overlays	
Smith Avenue - W. 7th to Kellogg		Victoria Street - Summit to Saint Clair		Sibley Street - 4th to 7th		Hamline Avenue - Randolph to Highland			
Selby Avenue - Western to Summit		Pedestrian Ramps with Overlays		10th Street - Robert to Wacouta		Annapolis Street - Bidwell to Robert			
Highland Pky - Snelling to Hamline				Pedestrian Ramps with Overlays		Pedestrian Ramps with Overlays			
(Funded from Capital Project)									
Pedestrian Ramps with Overlays									
(M & O Program - Pending ROW Fund Decision)									
RAMSEY COUNTY MILL & OVERLAYS		RAMSEY COUNTY MILL & OVERLAYS		RAMSEY COUNTY MILL & OVERLAYS		RAMSEY COUNTY MILL & OVERLAYS		RAMSEY COUNTY MILL & OVERLAYS	
Cleveland Ave - St. Paul Av to Ford Pkwy		Como - Snelling to Lexington		Edgerton (Payne) - 7th to Edgerton		Carver Ave - TH 61 to McKnight		Como - Raymond to Snelling	
Como Avenue - Dale to Marion		Lexington - Randolph to University		Energy Park - TH 280 to RR tracks		Jackson St - 500' S of Arlington to Larp		Dale - I 94 to Front	
Ford Pkwy - Miss River Bridge to Howell		McKnight - TH 5 to N of Larp		Larpenteur - White Bear to TH 120				Energy Pk - RR tracks to Lexington	
Marshall Ave - Miss Riv Bridge to Snelling		Plato - W Water to Fillmore		Selby - Lexington to Dale				Larpenteur - East Shore Dr to White Bear	
Maryland Ave - Greenbrier to Johnson Pk		Prosperity - Arlington to Larpenteur		St. Paul Avenue - Edgcumbe to Cleveland				Phalen Blvd - Johnson Pkwy to Maryland	
Minnehaha - Pierce Butler to Como				White Bear Avenue - Upper Afton to I-94				Randolph - Cleveland to Brimhall	
Pierce Butler - Snelling to Grotto									
White Bear Ave - Reany to Ames									
8-80 PROJECTS									
Payne @ 7th Intersection Improvements									
Pelham Bikeway Improvements									
Snelling Medians - Ford Pkwy to Randolph									
carryover									
MnDOT PROJECTS (with City participation)		MnDOT PROJECTS (with City participation)		MnDOT PROJECTS (with City participation)		MnDOT PROJECTS (with City participation)		MnDOT PROJECTS (with City participation)	
Snelling Medians - Ford Pkwy to Randolph		Railroad Crossing at EPD (MSAS 157)				Robert M&O/Signals			
		Smith M&O and High Bridge							
RAMSEY COUNTY PROJECTS (with City participation)		RAMSEY COUNTY PROJECTS (with City participation)		RAMSEY COUNTY PROJECTS (with City participation)		RAMSEY COUNTY PROJECTS (with City participation)		RAMSEY COUNTY PROJECTS (with City participation)	
Warner Bridge Rehab over Childs Road		Cleveland Avenue - Hoyt to Larpenteur		Cleveland - Buford to Hoyt		Cleveland - Como to Buford			
		Rice St – Maryland to BNSF RR Bridge Reconstruction		Maryland/Edgerton		Jackson St Bridge Reconstruction			
		Dale St – Iglehart to University Interchange Reconstruction				Jackson - Maryland to Arlington			
						Jackson- Pennsylvania to Acker			
FEDERAL FUNDING		FEDERAL FUNDING		FEDERAL FUNDING		FEDERAL FUNDING		FEDERAL FUNDING	
\$2,637,888		\$8,883,349		\$3,942,800		\$13,901,600		\$7,780,000	
Jackson Street - 11th to University		Margaret Street Bike Boulevard		Downtown Signal Enhancements		Expo Area - Safe Routes to School		Payne/Phalen Sidewalk Infill	
2,637,888		1,215,549		2,222,800		498,000		780,000	
		Grand-Hamline to Victoria Ped Safety		Summit Avenue Bridge Reconstruction		Washington Tech - Safe Routes to School		EB Kellogg Blvd Bridge @ RiverCentre	
		667,800		1,720,000		816,000		7,000,000	
		Kellogg/3rd Street Bridge				Como Avenue Trail - Raymond to Hamline			
						5,058,000			
SEWER UTILITY PROJECTS		SEWER UTILITY PROJECTS		SEWER UTILITY PROJECTS		SEWER UTILITY PROJECTS		SEWER UTILITY PROJECTS	
\$9,750,000		\$10,450,000		\$12,100,000		\$11,650,000		\$12,100,000	
Ashland Central Sewer Lining Project		2018 Sewer Lining Project		2019 Sewer Lining Project		2020 Sewer Lining Project		2021 Sewer Lining	
1,800,000		1,800,000		1,800,000		1,800,000		1,800,000	
2017 Misc Sewer Rehab Project		2018 Misc Sewer Rehab Project		2019 Misc Sewer Rehab Project		2020 Brick MH Rehab Project		2020 Brick MH Rehab Project	
700,000		700,000		700,000		700,000		700,000	
Phalen Creek Storm Inter Rehab Phase 2		Phalen Creek Storm Inter Rehab Phase 3		Large Diameter Brick Sewer Rehab		Large Diameter Brick Sewer Rehab		Large Diameter Brick Sewer Rehab	
4,000,000		4,000,000		2,000,000		2,000,000		2,000,000	
Ford Parkway Access Shaft @ Mt Curve		Broadway Lift Station Rehab Project		Kittsondale Storm Tunnel Phase I		Kittsondale Storm Tunnel Phase 2		Kittsondale Storm Tunnel Phase 3	
600,000		1,300,000		3,500,000		3,500,000		3,500,000	
Sibley Lift Station Rehab		Riverview Lift Station Rehab		Sanitary Tunnel Rehab		Sanitary Tunnel Rehab		Sanitary Tunnel Rehab	
400,000		1,000,000		500,000		500,000		500,000	
Sewer Repairs on City & County Projects		Sewer Repairs on City & County Projects		Lift Station Rehab (Como-Eustis & Red Rk)		Lift Station Rehab		Lift Station Rehab	
800,000		900,000		1,300,000		1,300,000		1,300,000	
2017 Citywide Sewer Repairs Project		2018 Citywide Sewer Repairs		Sewer Repairs for City & County Projects		Sewer Repairs for City & County Projects		Sewer Repairs for City & County Projects	
400,000		600,000		1,100,000		900,000		1,100,000	
Pond & Ditch Cleaning & Repairs		Engineering for SW Facility Rehab Project		SW Facility Rehab Project		2020 Citywide Sewer Repairs		SW Facility Rehab Project	
850,000		150,000		1,200,000		800,000		1,200,000	
Engineering for Lift Station Rehab Projects						Engineering for SW Facility Rehab Project			
200,000						150,000			

# SAINT ANTHONY TRAFFIC CALMING



Reuben Collins  
Department of Public Works  
651-266-6059  
[reuben.collins@ci.stpaul.mn.us](mailto:reuben.collins@ci.stpaul.mn.us)

3/27/2017

Presentation To:  
Transportation Committee of the Planning Commission



# Background & Timeline

- 1/11/2016
  - Union Park District Council Land Use Committee identifies concerns and asks PW to look at solutions
- May-July 2017
  - Working group met twice to confirm concerns and objectives and review initial concepts
  - Staff developed 4 alternatives
- 11/28/2016 – Open House
  - Staff presented the four alternatives
- Dec 2016 – Mar 2017
  - Staff refines alternatives, reviews feedback, meets with property owners
  - Makes final recommendations
- 3/13/2017
  - Union Park District Council Transportation Committee supports staff recommendations

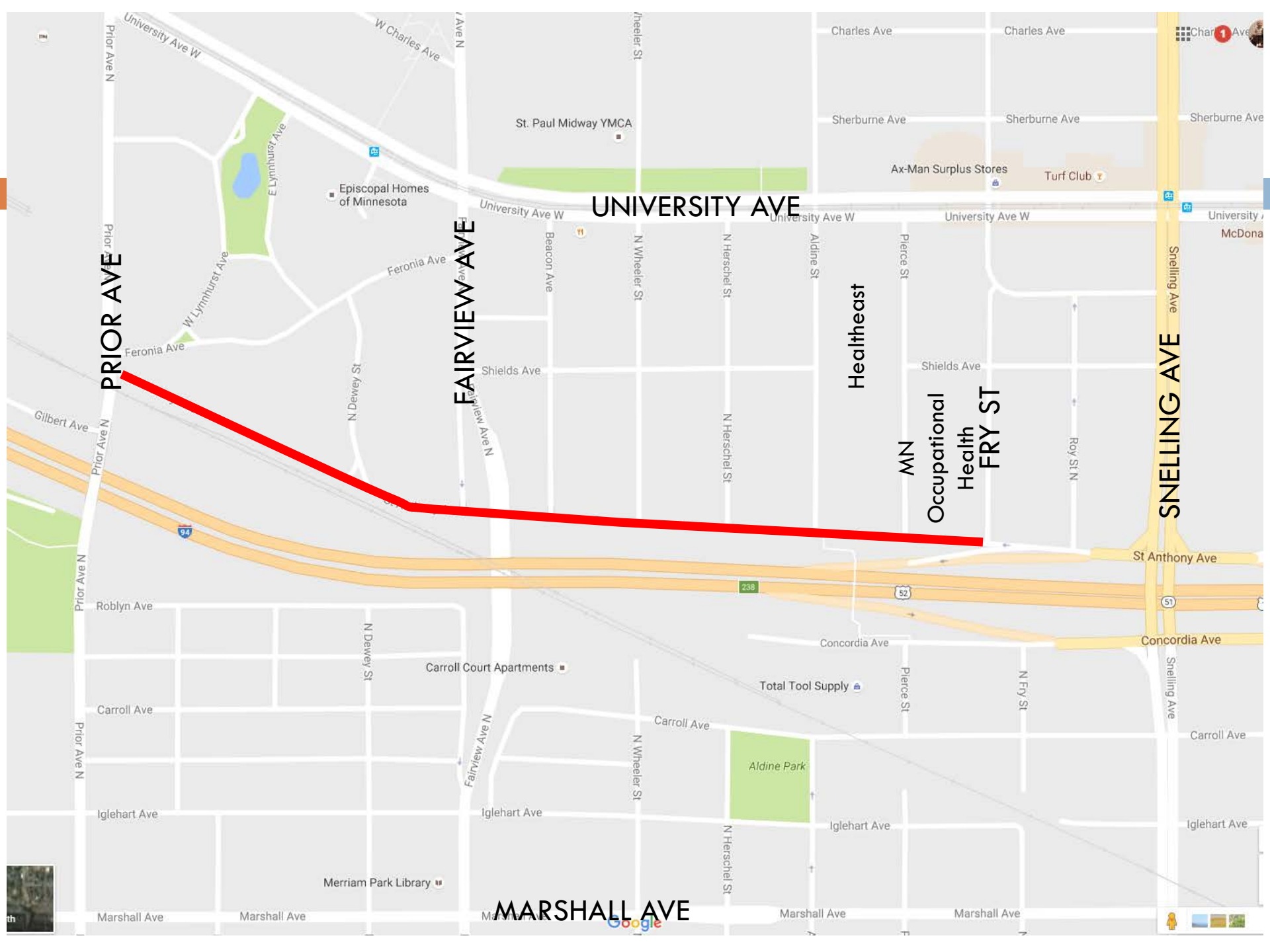
# Initial Options to Explore

- Primary Concerns
  - ▣ Speeding
  - ▣ Wrong-way traffic
  - ▣ Failure to stop at stop sign at Aldine
- Based on 1/11/16 UPDC Land Use Committee Meeting
  - ▣ Striping the travel and parking lanes to visually narrow the roadway
  - ▣ Adding on-street bike lanes
  - ▣ Changing the direction flow to two-ways
  - ▣ Incorporating more marked on-street parking

# Study Objectives

---

- Implement traffic calming to slow vehicle speeds and improve safety
- Improve east/west bicycle movement, including connectivity with the Aldine pedestrian bridge over I-94



PRIOR AVE

FAIRVIEW AVE

UNIVERSITY AVE

SNELLING AVE

MARSHALL AVE

Healtheast

Occupational Health  
FRY ST

St. Paul Midway YMCA

Episcopal Homes of Minnesota

Ax-Man Surplus Stores

Turf Club

Carroll Court Apartments

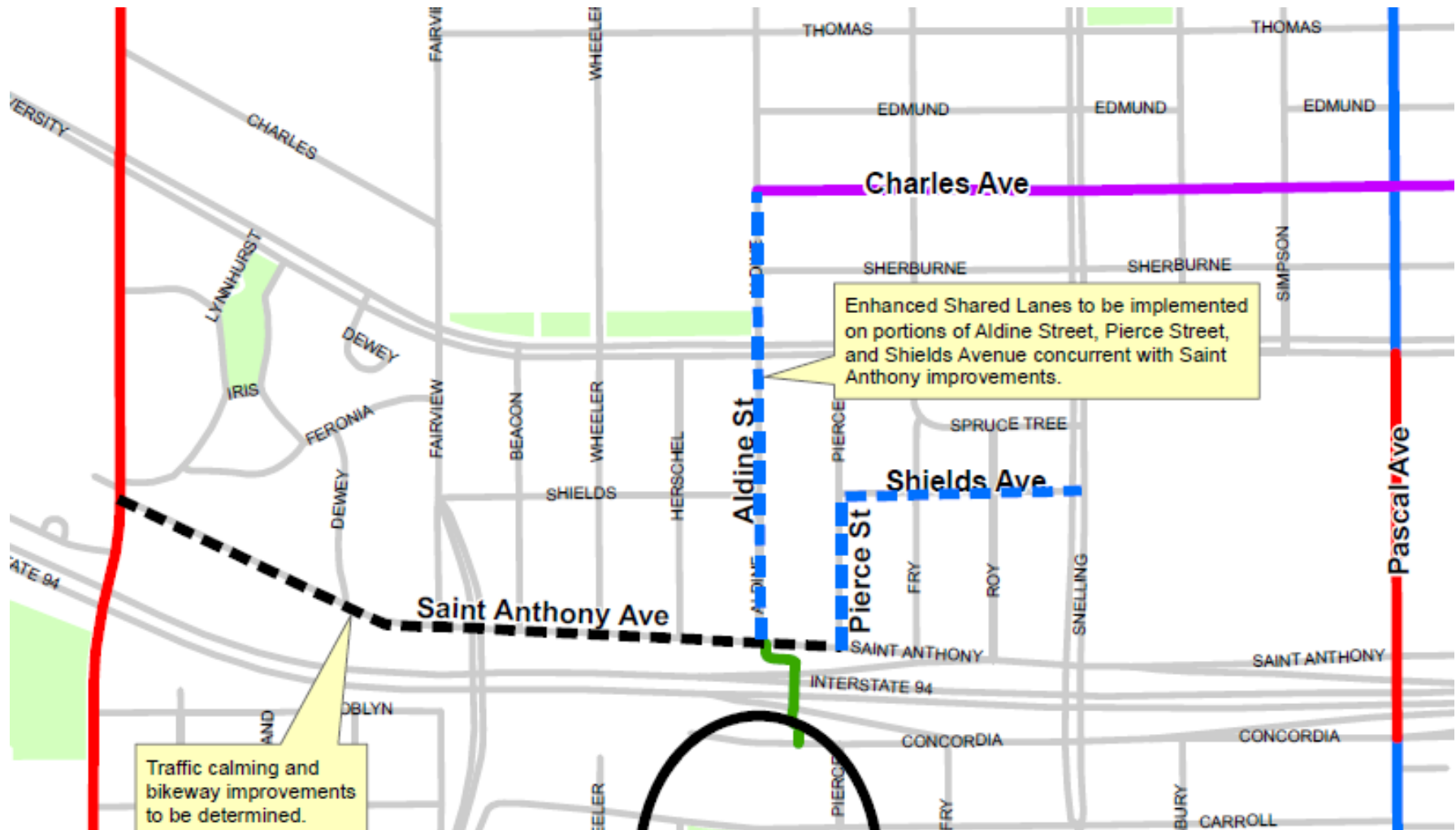
Total Tool Supply

Aldine Park

Merriam Park Library

Google

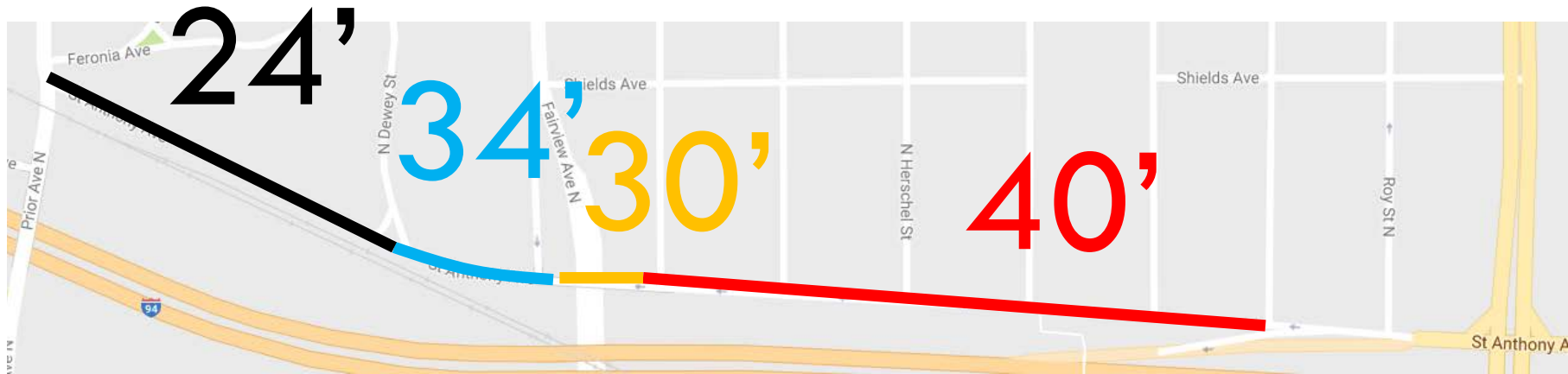
# The East/West Challenge for Bikes





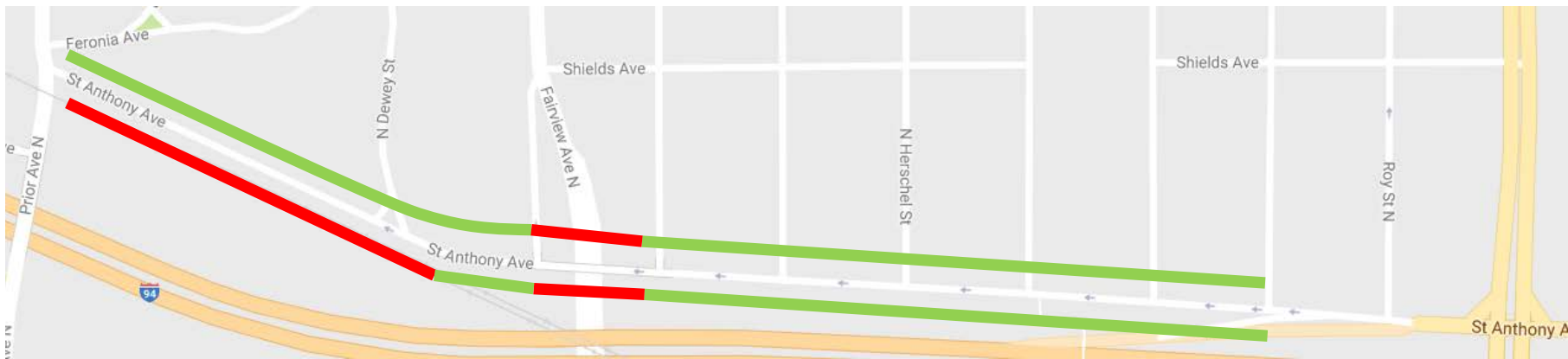
# Roadway Width

- Roadway width changes along corridor



# Existing On-Street Parking

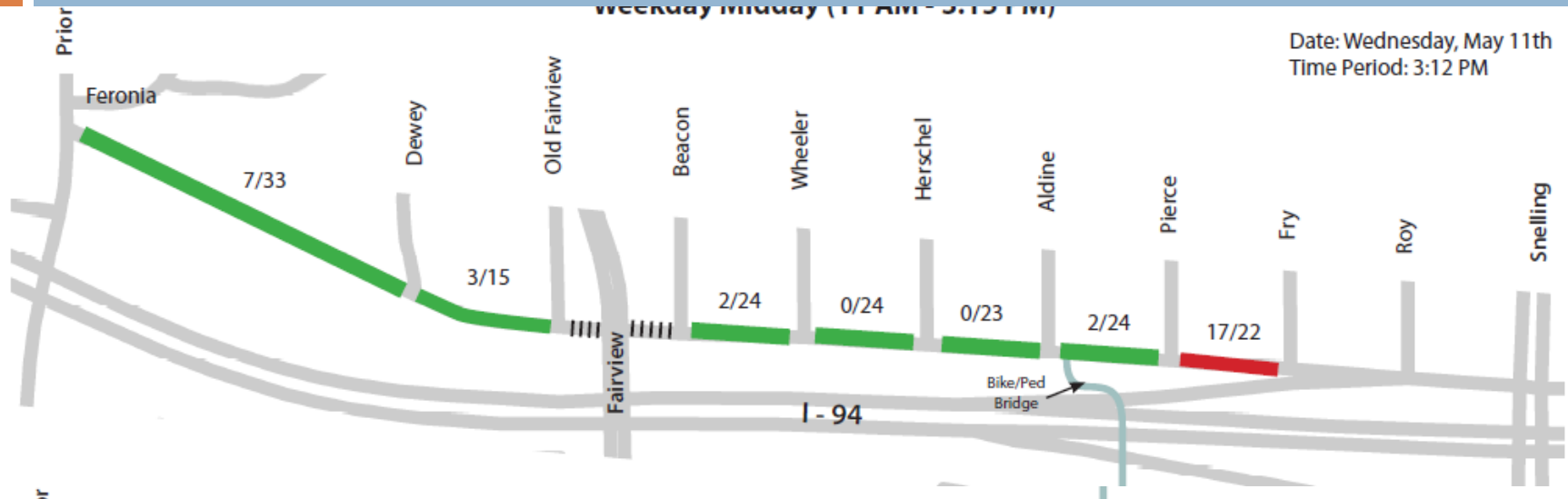
- Parking Permitted
- Parking Prohibited



# Parking Occupancy Data

Weekday Midday (11 AM - 3:15 PM)

Date: Wednesday, May 11th  
Time Period: 3:12 PM



Date: Monday, May 9th  
Time Period: 5:30 AM



Legend

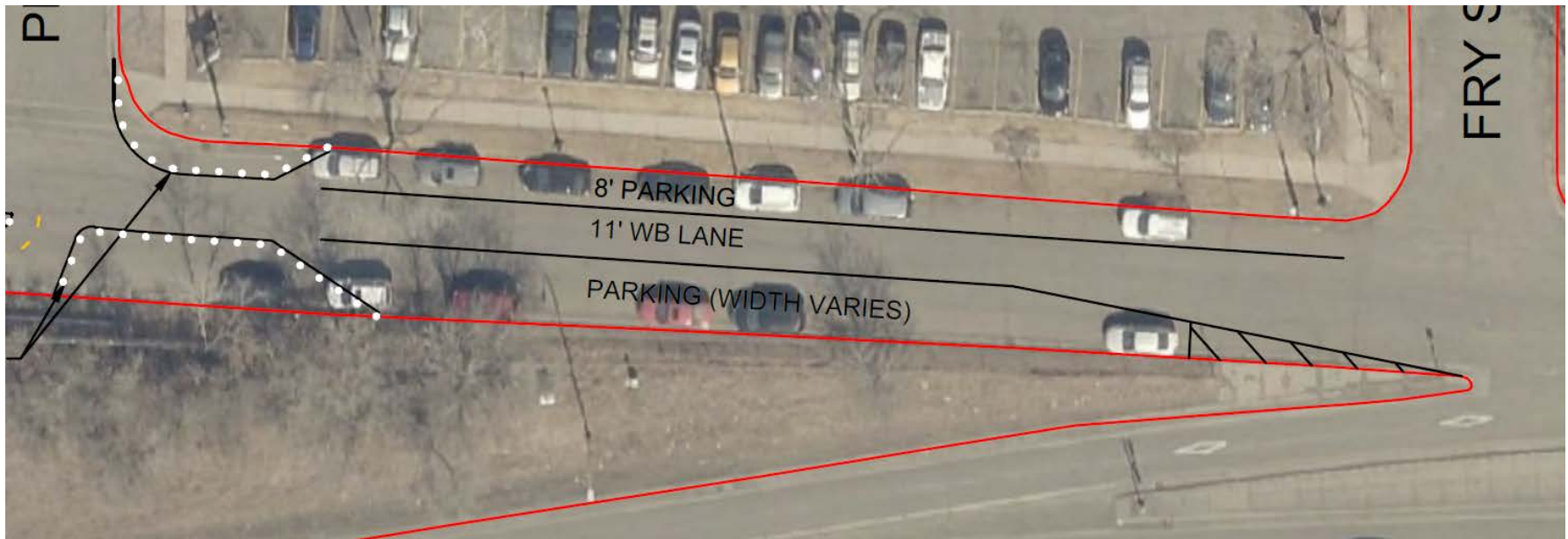
# Recommendation

---

- PW is recommending “Alternative 1 a” – a hybrid of Alternative 1 and Alternative 3.

# Pierce to Fry

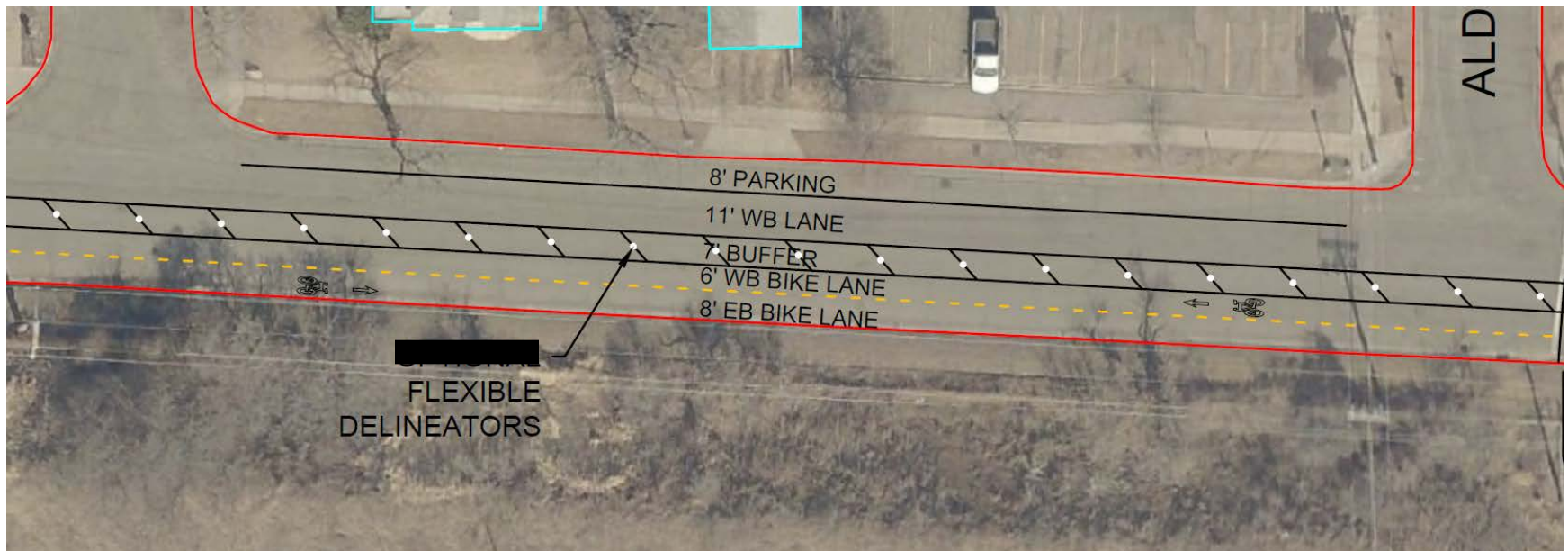
- Single WB travel lane
- Parking both sides
- Traffic Calming “Gateway” bumpouts
- Bumpouts will be permanent rather than temporary





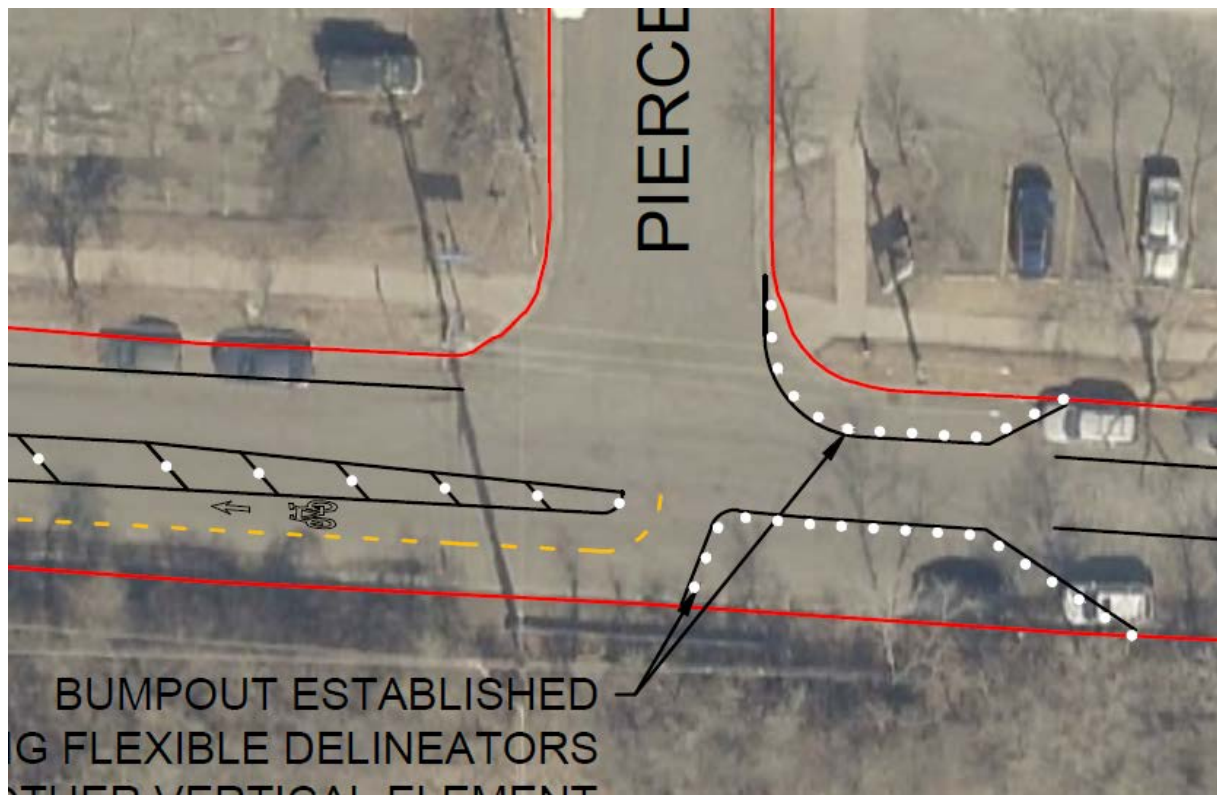
# Alternative 1a – 40'

- One WB travel lane
- Parking removed from south side
- Two-way bikes on south side
- Flexible delineators will be used

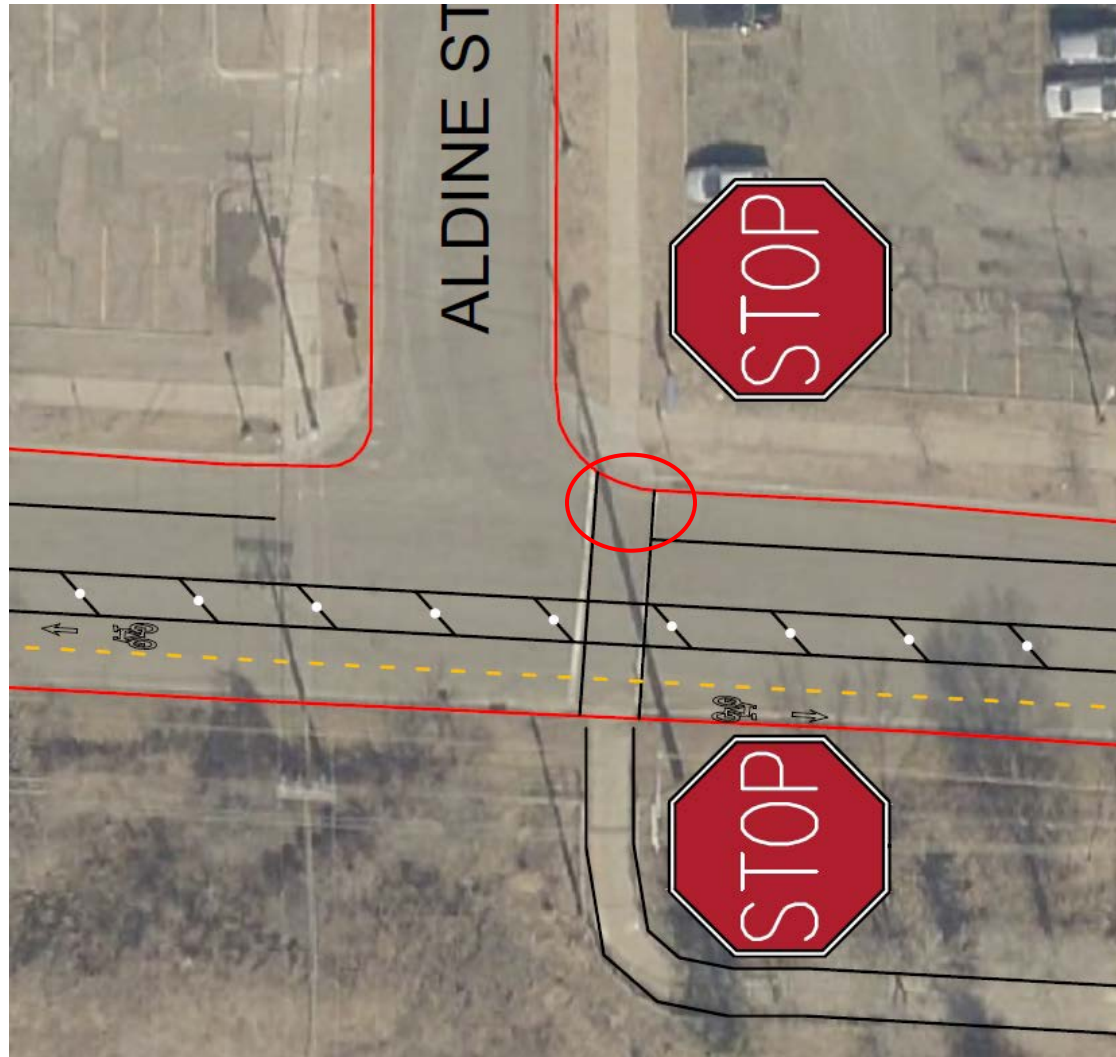


# Alternative 1a – Pierce St

- Need to finalize transition details



# Permanent Bumpout at Aldine





# Bridge over Fairview



# Bridge over Fairview

- Add fence to bridge over Fairview to meet height requirements.



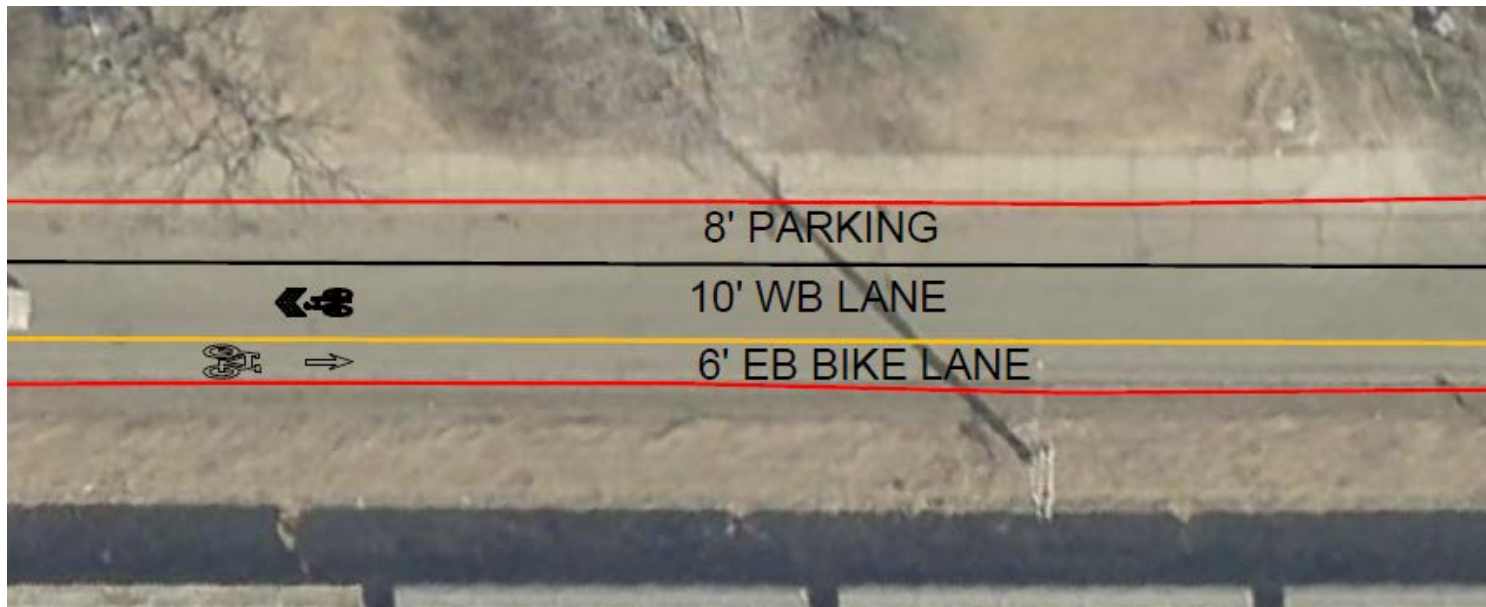


# Alternative 1a – Dewey St Transition



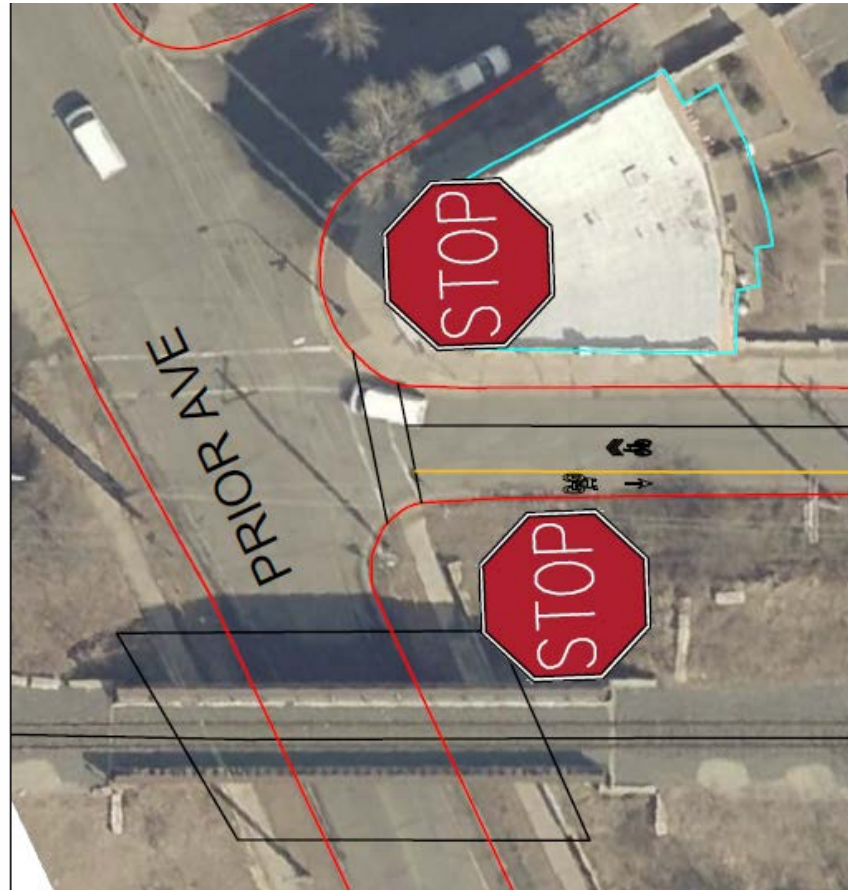
# Alternative 1a – 24'

- One WB travel lane (shared cars & bikes)
- EB contraflow bike lane



# Alternative 1a – Prior Ave

- Need to finalize transition details



# Next Steps

- Finalize design details
- Generate reliable project cost
- If funding is available in the 8-80 Striping fund, then implement in 2017.
- Need to communicate decision and timeline to neighborhood and residents
- No public hearing or council approval is needed



The Most Livable  
City in America

# Thank You!

Reuben Collins

Department of Public Works

651-266-6059

[reuben.collins@ci.stpaul.mn.us](mailto:reuben.collins@ci.stpaul.mn.us)