



CITY OF SAINT PAUL

Christopher B. Coleman, Mayor

25 West Fourth Street
Saint Paul, MN 55102

Telephone: 651-266-6700
Facsimile: 651-228-3220

TRANSPORTATION COMMITTEE OF THE PLANNING COMMISSION

Monday, December 4, 2017, 4:00 p.m. – 5:30 p.m.
*All meetings are held in the City Hall Annex 13th floor
Conference room at 25 West 4th Street in Saint Paul*

1. Phalen Regional Park Multimodal Transportation Study – Bryan Murphy (Parks & Recreation Dept) ~~20~~ 30 minutes
- ~~2. Rice Street Transportation Safety Study – Nick Fischer (Ramsey County PW) 40 minutes~~
- ~~3~~ 2. Lexington Avenue/West 7th transportation improvements – David Kuebler/John Maczko (Public Works) ~~20~~ 30 minutes

Upcoming Transportation Committee Meetings

- ~~December 18 (will be cancelled)~~
- January 8* (note: This meeting is not on the regular rotation Monday due to holidays on 1/1 and 1/15.)
- January 29

Meetings are open to the public. The Chair may allow five minutes for informal public comment (from non-committee members) at the beginning of each agenda as needed. Additional time may be allocated for comments or further discussion at the discretion of the Chair. Meetings will be cancelled if there is not a quorum expected, or if there are no agenda items. For additional information on the Transportation Committee of the Planning Commission, please visit our website at bit.ly/StPaulITC or contact Bill Dermody at Bill.Dermody@ci.stpaul.mn.us or 651-266-6617.

Transportation Committee Staff Report for Plans and Policies

Committee date: December 4, 2017

Plan Name/Policy Name: Phalen Regional Park Multimodal Transportation Study

Contact: Bryan Murphy, 266-6411, bryan.murphy@ci.stpaul.mn.us

Plan/Policy Webpage: <https://www.stpaul.gov/departments/parks-recreation/design-construction/current-projects/phalen-regional-park-multimodal>

Description: Several transportation oriented projects identified in the 2011 Phalen-Keller Regional Park Master Plan require additional study prior to implementation. This study will evaluate multi-modal transportation methods at the park and provide recommendations for improvements to meet current and future needs of park users.

General Timeline: July 2017 - December 2017

Public Hearing Date & Location: NA

Transportation Committee Role:

☒ Inform scope & approach ☐ Review draft ☐ Make recommendation

Explanation

Staff recommendation	<i>Describe, if any recommendation/action is required</i>
Action item requested of the Committee	<i>State intended action for committee to take, e.g., "Recommend approval of x" or "Advise staff on which projects to apply for from the grant program"</i>
Committee recommendation	<i>To be filled in at the meeting</i>
Committee vote	<i>To be filled in at the meeting</i>

Phalen Regional Park Multi-Modal Transportation Study

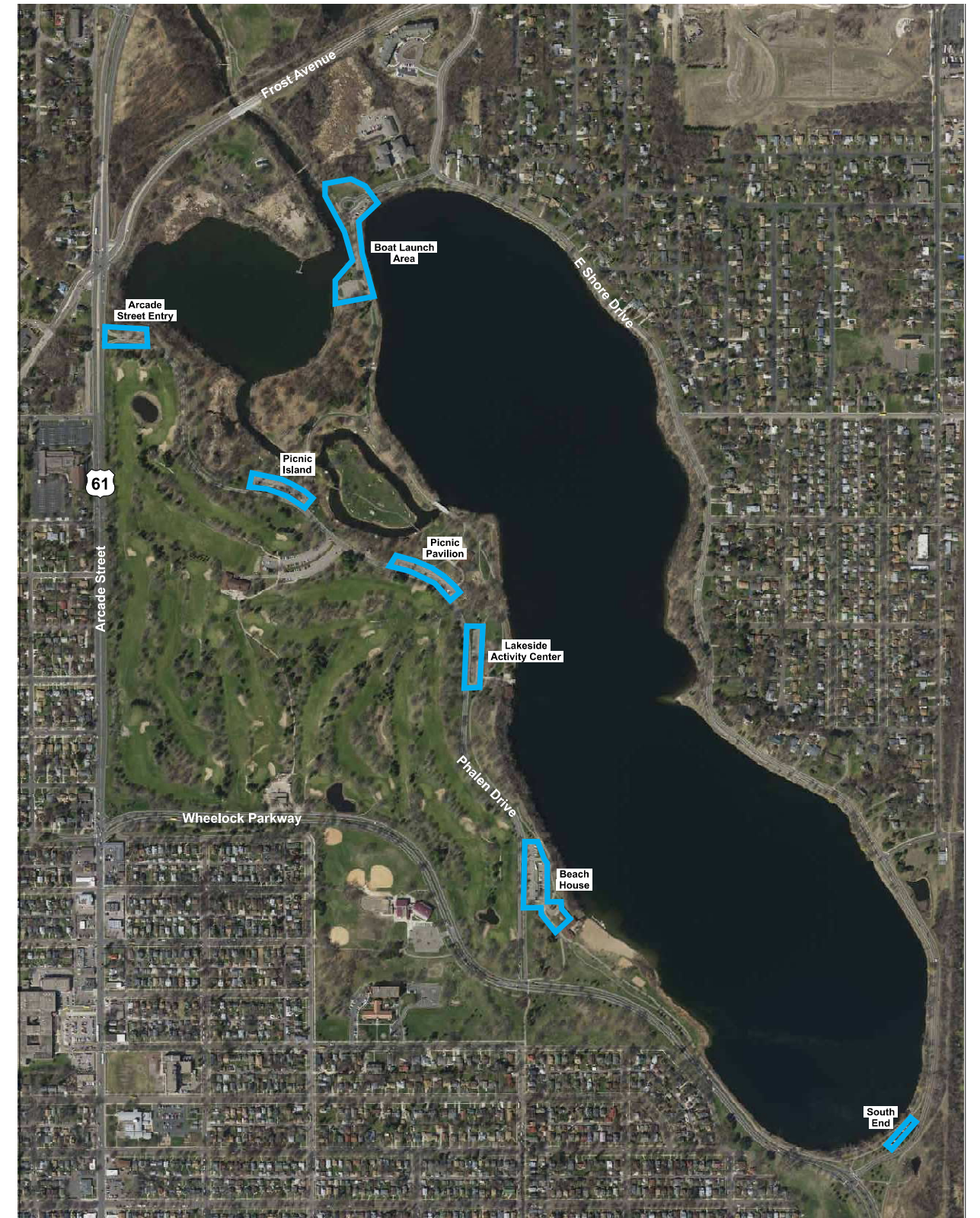


Study Overview

Several transportation oriented projects identified in the 2011 Phalen-Keller Regional Park Master Plan require additional study prior to implementation. This study evaluates multi-modal transportation at the park and will provide recommendations for improvements to meet current and future needs of park users.

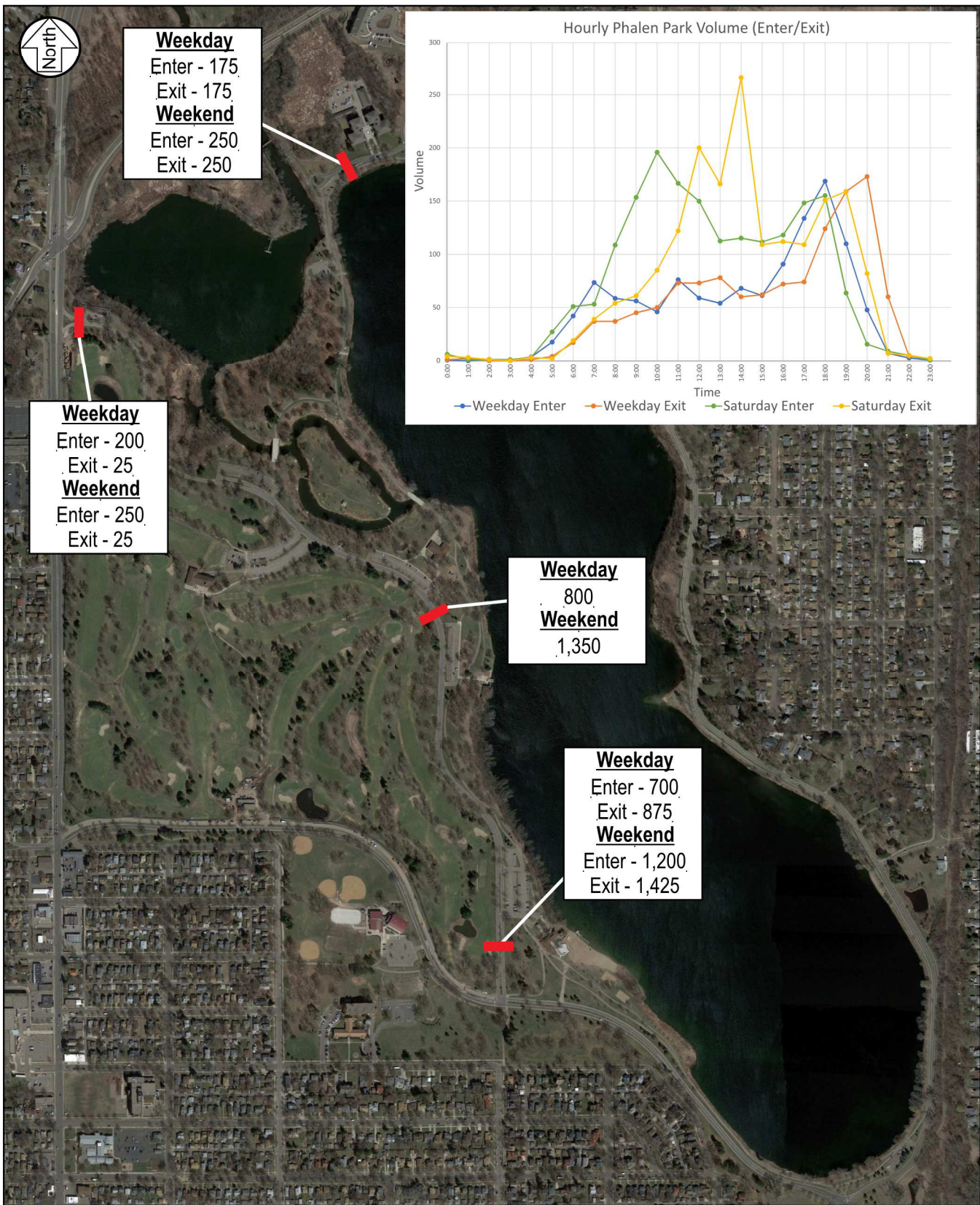
Goals

- **Eliminate conflict between vehicles, pedestrians, and bicyclists**
- **Eliminate confusing circulation patterns**
- **Protect and complement the natural characteristics of the park**
- **Develop design characteristics for future implementation**
- **Promote trail connections within the park and to adjacent trail systems**



Phalen Regional Park Multi-Modal Transportation Study

Traffic Volumes



Peak Parking Demand

Peak parking demand data was collected on weekday evenings and weekend afternoons. Peak parking demand varied between these time periods. The highest parking demand is shown to identify the desired design supply.

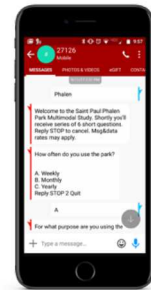


Phalen Regional Park Multi-Modal Transportation Study

Public Engagement

Text Survey

- August 18 to September 18 (1-Month)
- 150 survey responses collected



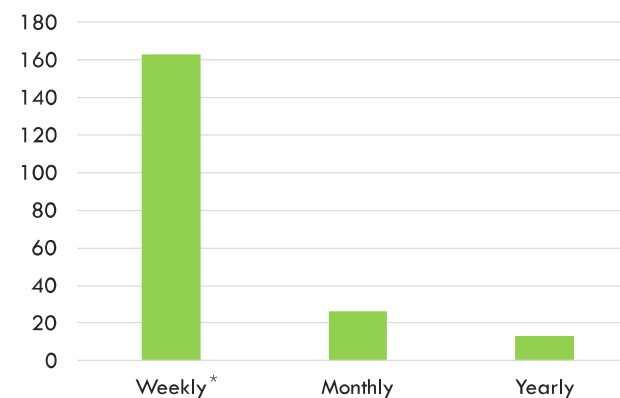
Pop-Up Meetings

- Wednesday, August 30 (4:00 p.m. to 6:00 p.m.)
- Saturday, September 2 (11:30 a.m. to 1:30 p.m.)
- Completed 50 interviews with park users

Public Comments

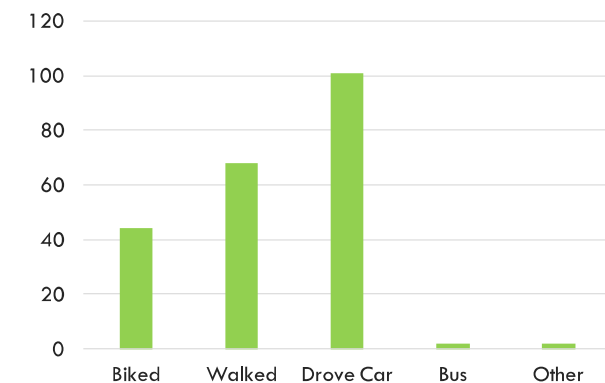
- Lack of lighting makes trail feel unsafe and reduces pedestrian/bike safety in dark evenings in later fall, winter, and early spring.
- Need for permanent bathrooms on the east side of the lake.
- Trail is bumpy and cracked in sections.
- One-way bike path is not clearly marked and bike speeds can be an issue.
- Litter (trash and pet waste), possibly due to lack of trash bins.
- Need for drinking fountains.
- Need for bike parking/racks.
- Walking and biking trails are tight in some areas.
- Crossing Arcade Avenue can be difficult.

How often do you use the park?

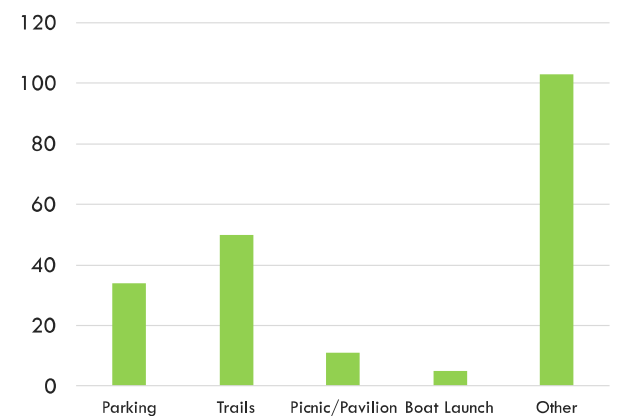


*Additionally, many pop-up meeting respondents noted they use the park daily.

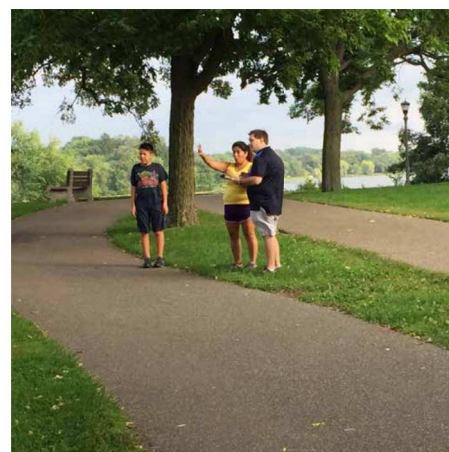
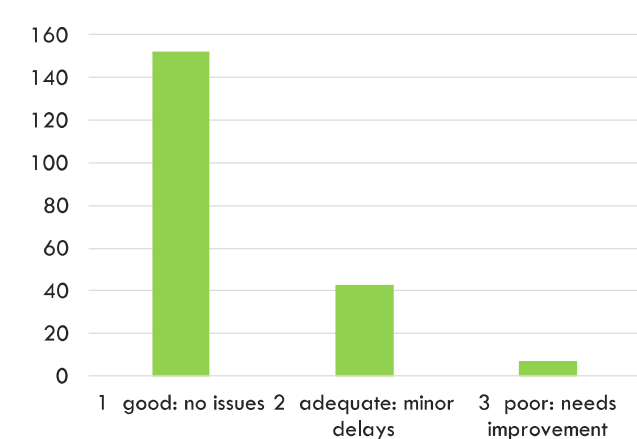
How did you get to the park?



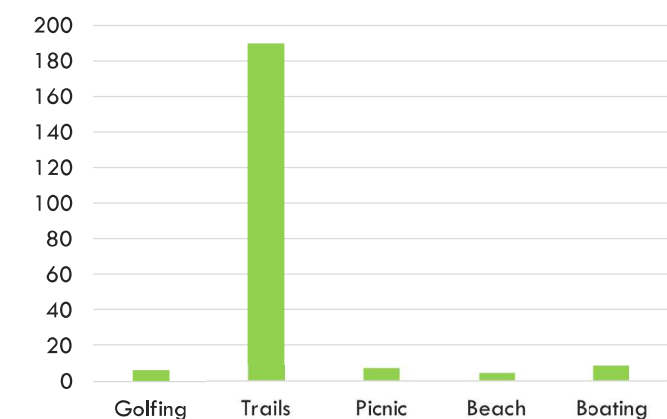
What improvements to the park are needed?



Rank your experience getting to the park.



What is your purpose for using the park?



Phalen Regional Park Multi-Modal Transportation Study

Arcade Street Park Entrance

Existing Conditions/Issues/Opportunities



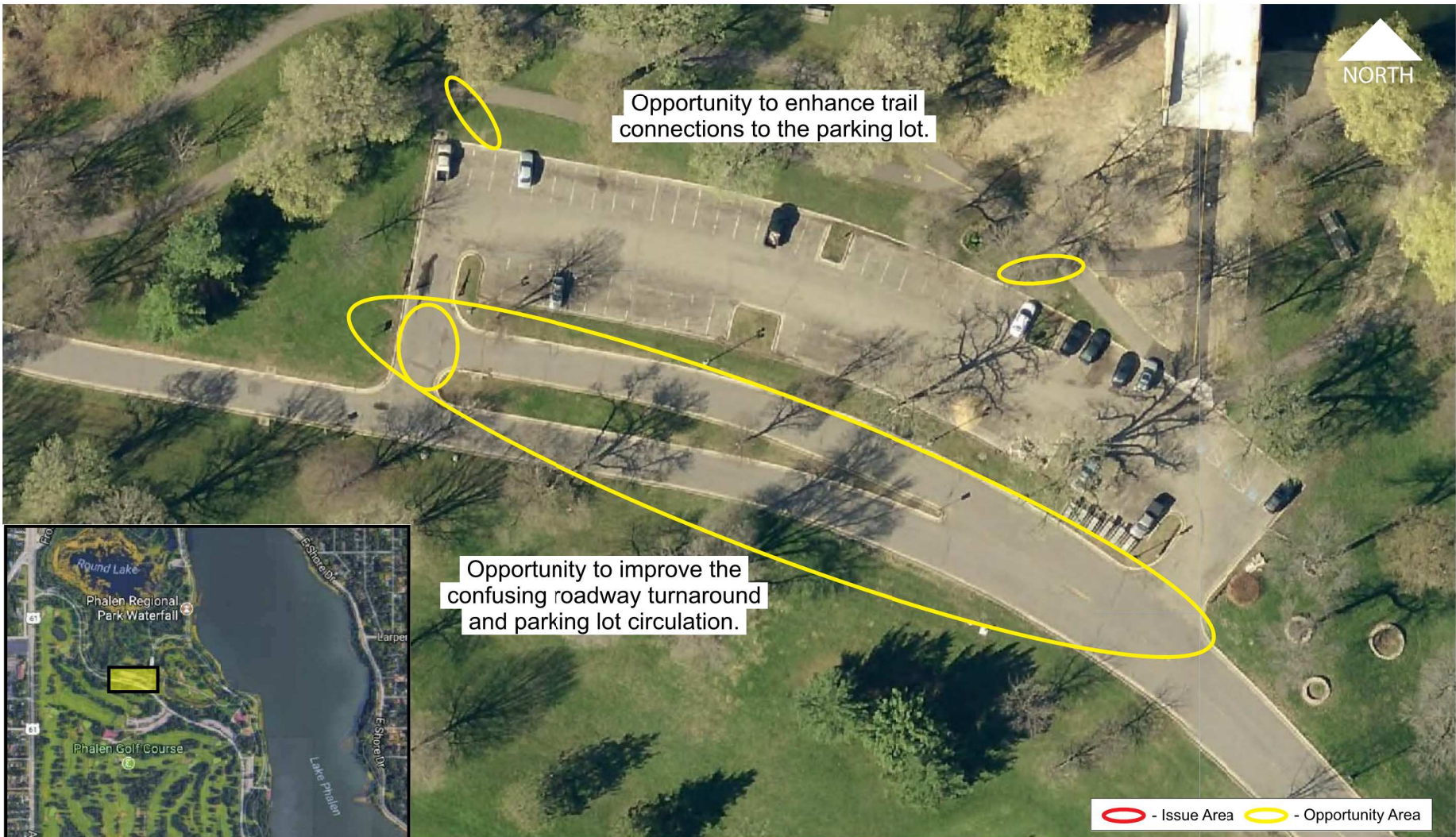
Preliminary Concept



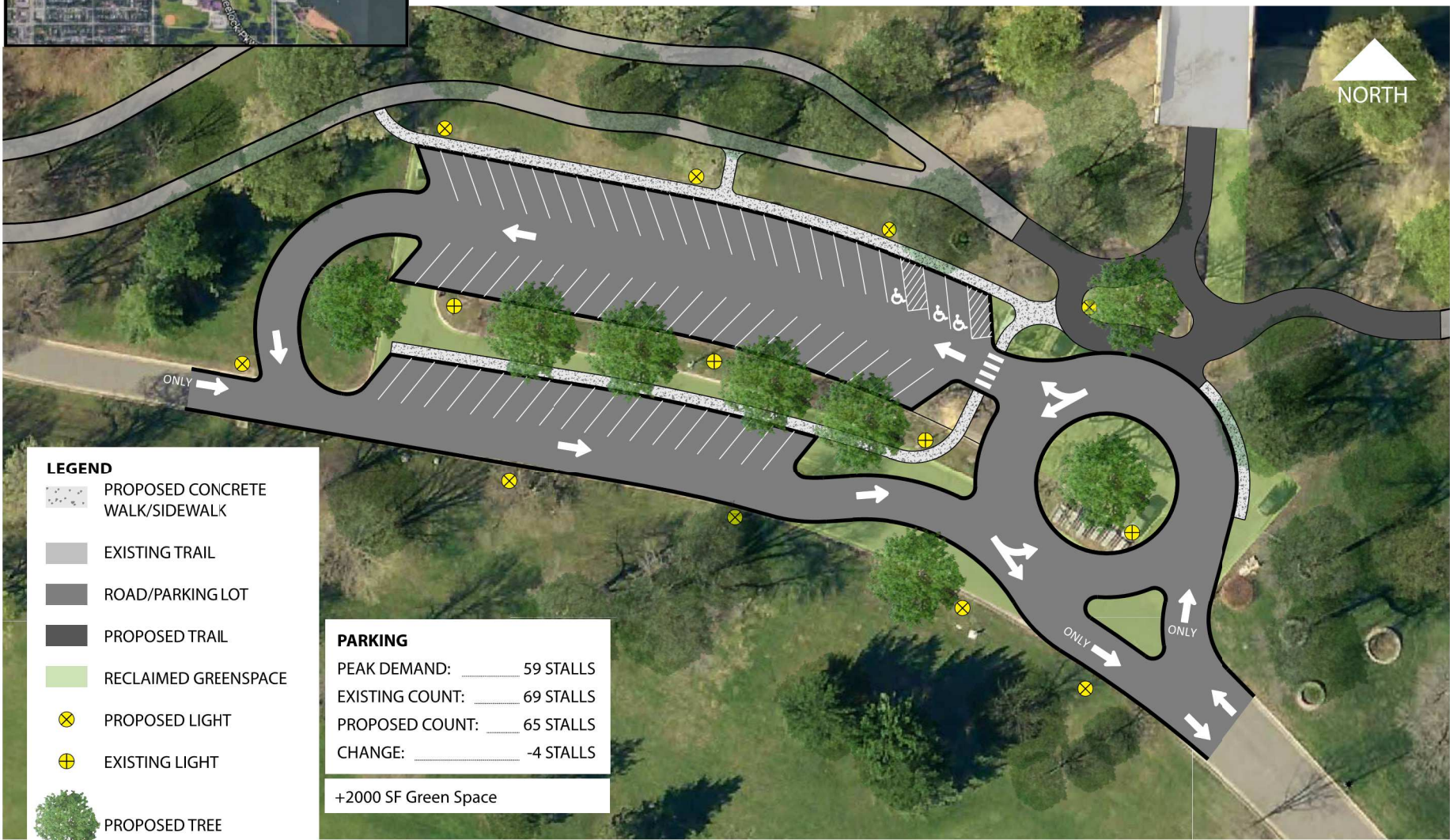
Phalen Regional Park Multi-Modal Transportation Study

Picnic Island

Existing Conditions/Issues/Opportunities



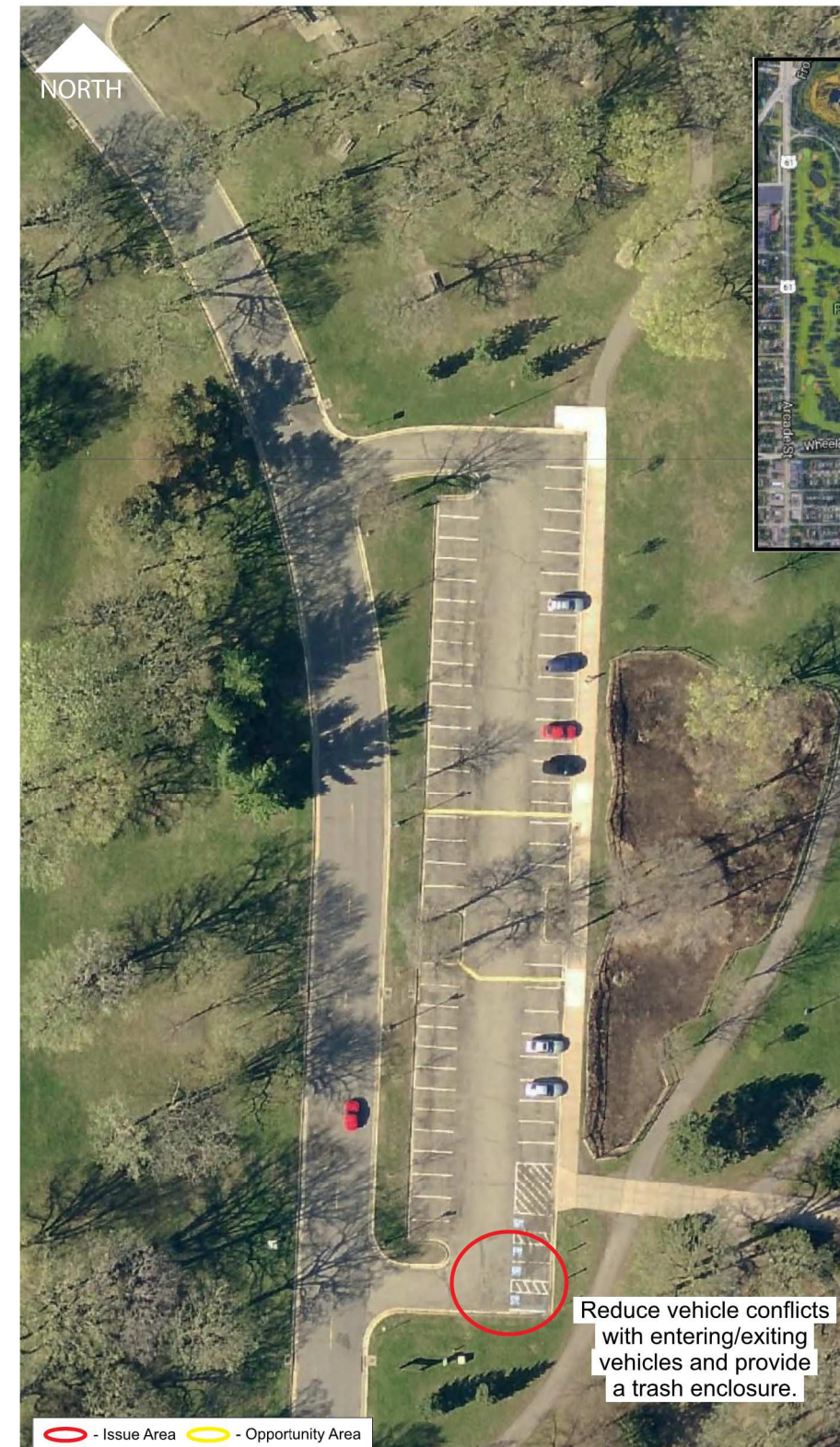
Preliminary Concept



Phalen Regional Park Multi-Modal Transportation Study

Lakeside Activity Center

Existing Conditions/Issues/Opportunities



Preliminary Concept



Phalen Regional Park Multi-Modal Transportation Study

Picnic Pavilion

Existing Conditions/Issues/Opportunities



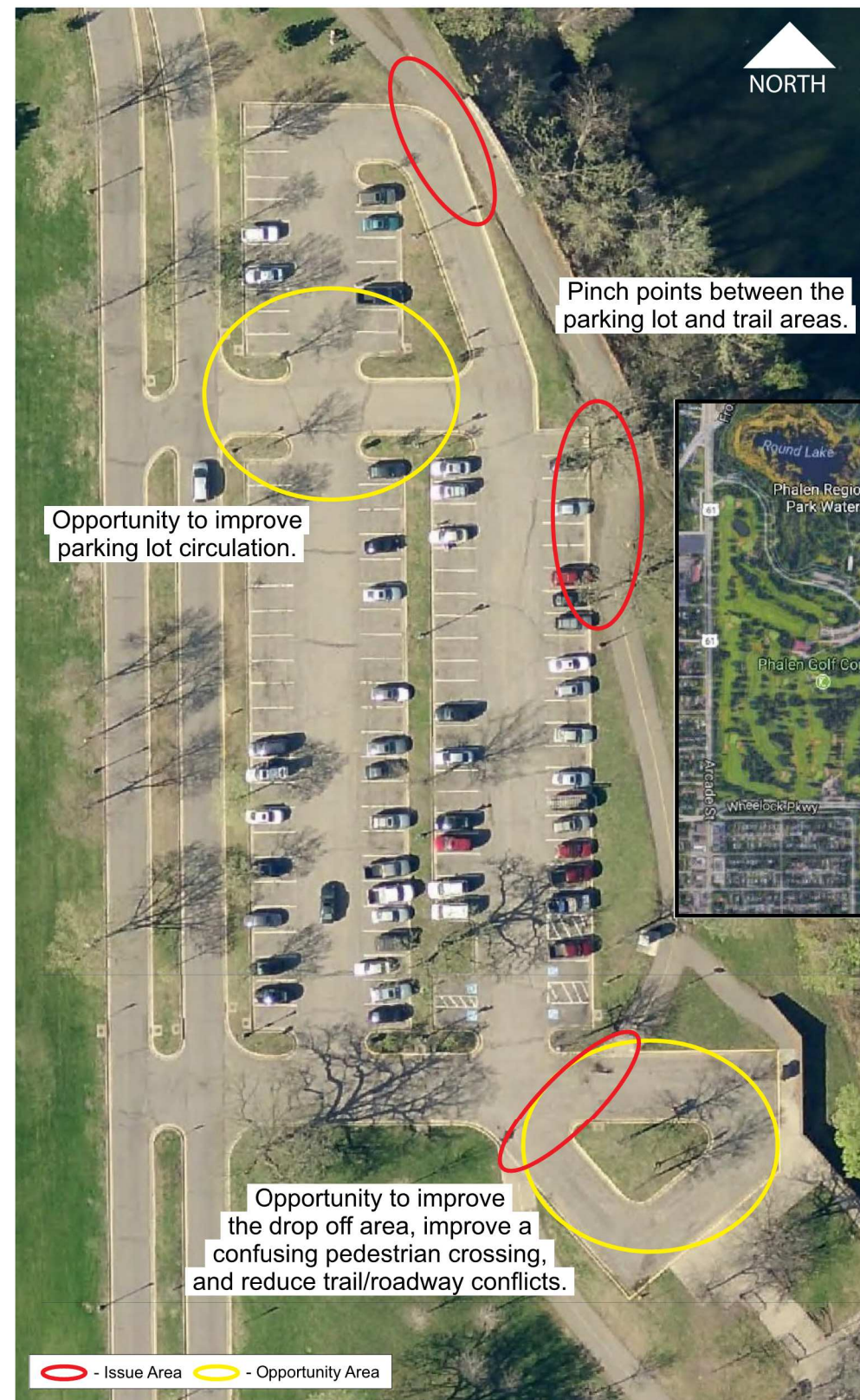
Preliminary Concept



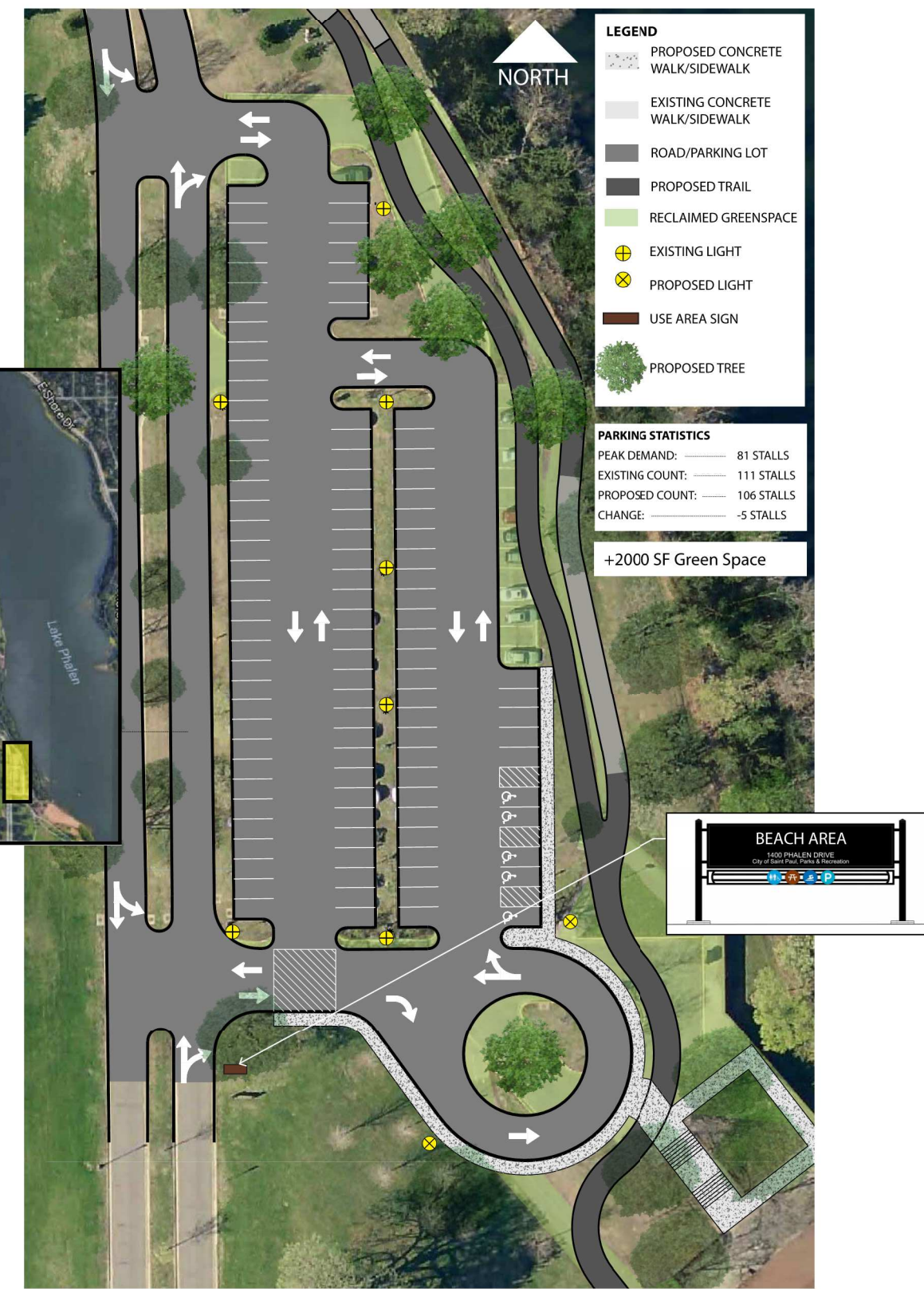
Phalen Regional Park Multi-Modal Transportation Study

Beach House

Existing Conditions/Issues/Opportunities



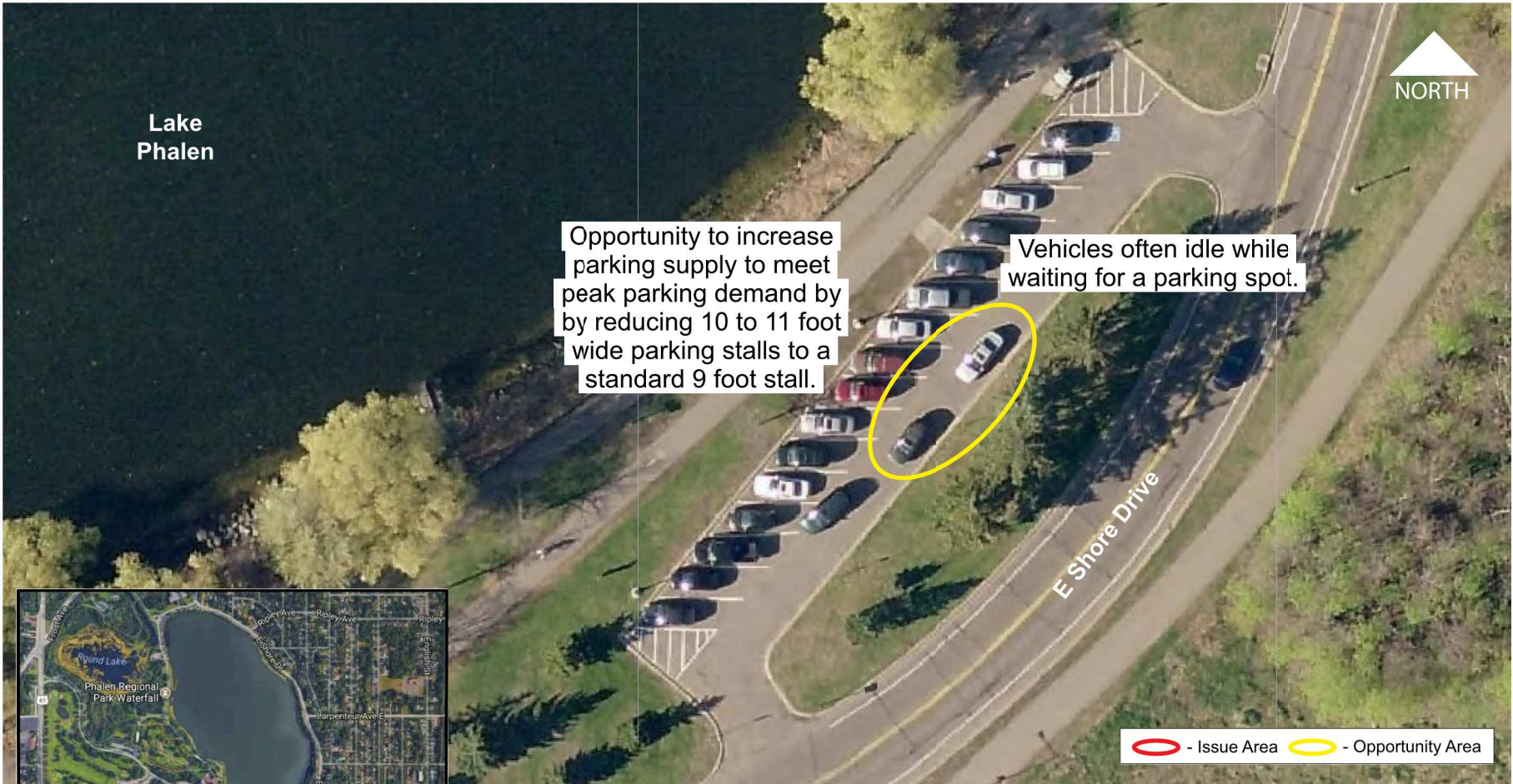
Preliminary Concept



Phalen Regional Park Multi-Modal Transportation Study

South End

Existing Conditions/Issues/Opportunities



Preliminary Concept



Phalen Regional Park Multi-Modal Transportation Study

Boat Launch Area

Existing Conditions/Issues/Opportunities



Preliminary Concept



Transportation Committee Staff Report for Projects

Committee date: December 4, 2017

Project Name: Lexington Parkway Realignment

Geographic Scope: On Lexington Parkway south of Albion Avenue

Project Contact: Joe Lux - Ramsey County; John Maczko/David Kuebler - City

Project Webpage: Not yet established

Project Description: Realignment of Lexington Parkway creating a new intersection with West 7th Street east of the current Montreal/West 7th intersection and extending motorized traffic, bicycle and pedestrian facilities to Shepard Road. Project will also modify the south end of the Lexington leg of the intersection into a cul-de-sac, modifying the signal at the Montreal/West 7th intersection to reflect the elimination of the Lexington leg, relocating the existing signal at Albion Avenue to the new Lexington/West 7th intersection, and improving the West 7th/I35E west ramp traffic signal to include ADA compliant pedestrian accommodations.

Project Stage & General Timeline: The project as described is a two phase project. Phase I would include: roadway and lighting work associated with the realignment of Lexington Parkway between Albion and West 7th Street and the signal work on West 7th Street. Phase I is currently proposed to be completed with proposed development in 2019. Phase II would continue the Parkway realignment by constructing/reconstructing the roadway between West 7th Street and Shepard Road. The timeline on this section has yet to be finalized.

Public Hearing Date & Location: TBD

Cost & Primary Funding Source(s): Costs are being developed; funding would be County State Aid, MnDOT Trunk Highway Municipal State Aid and possibly Federal STP funds. Assessments, if any, would be for above standard amenities if they are desired.

Transportation Committee Role:

- ☒ Inform project scope & approach ☐ Inform design ☐ Inform implementation
- ☒ Make recommendation

Explanation

Attachments include:

☐ Complete Streets Checklist

☒ Scoping document

☐ CIB request

☐ Summary of Engineering Recommendations

Staff recommendation	<i>Approval</i>
Action item requested of the Committee	<i>Recommend approval of the re-alignment to the City Council</i>
Committee recommendation	<i>To be filled in at the meeting</i>
Committee vote	<i>To be filled in at the meeting</i>



PROPOSED LEXINGTON PARKWAY MODIFICATIONS



**900 Albion Avenue
Senior Community**
ST. PAUL , MINNESOTA
11-21-2017 | COMM#82275-17138

