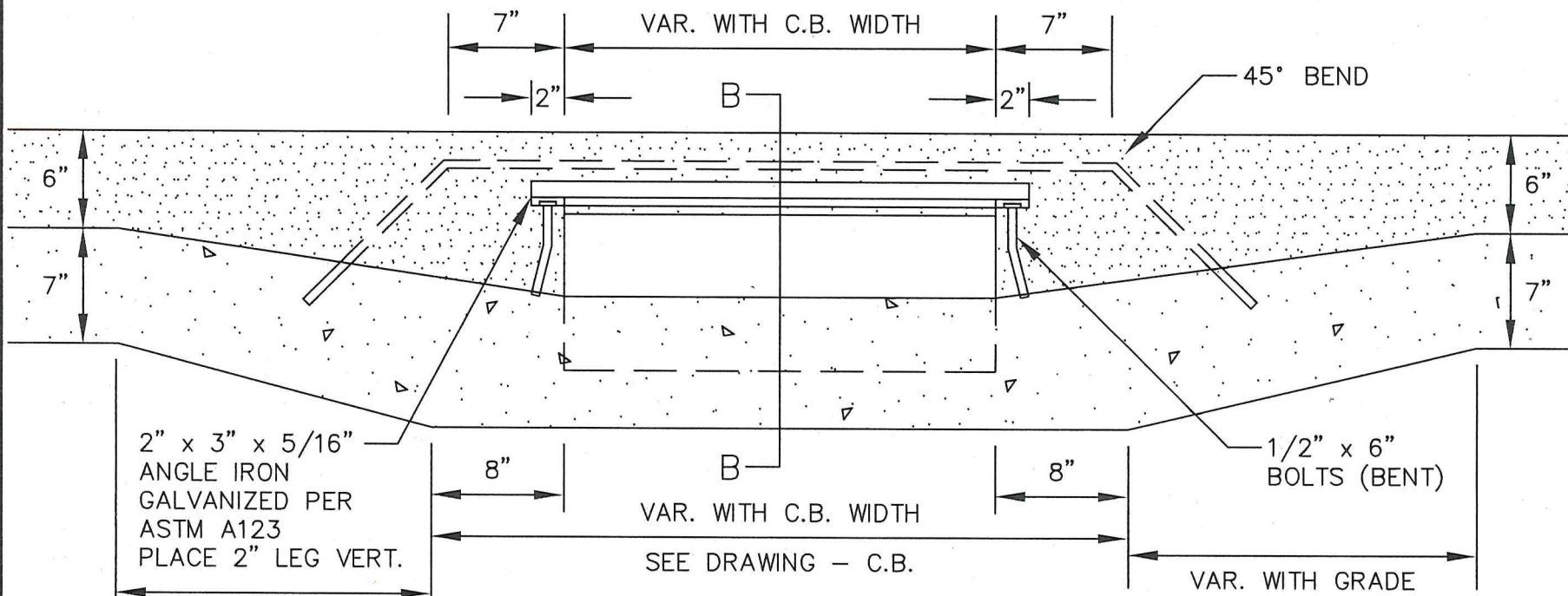


APPROVED 1 23 2017
Paul J. Kauts
 CITY ENGINEER

CITY OF ST. PAUL
 DEPARTMENT OF PUBLIC WORKS
 SIDE INLET OPENING
 FOR B-624 CURB & GUTTER

Date of Revision
 JAN 2017

Standard Plate No.
 3103C

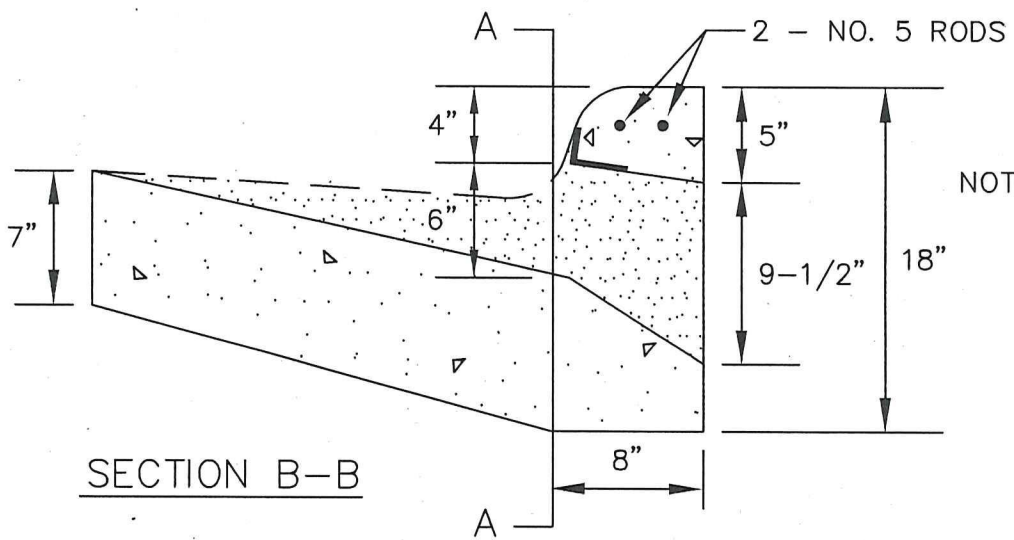


2" x 3" x 5/16"
 ANGLE IRON
 GALVANIZED PER
 ASTM A123
 PLACE 2" LEG VERT.
 VAR. WITH GRADE

VAR. WITH C.B. WIDTH
 SEE DRAWING - C.B.

1/2" x 6"
 BOLTS (BENT)
 VAR. WITH GRADE

SECTION A-A



- NOTE: 1. REINFORCING STEEL TO BE GRADE 60 FUSION BONDED EPOXY COATED PER ASTM A775.
2. THIS PORTION OF CURB SHALL BE RODDED IN PLACE OR MECHANICALLY VIBRATED TO ASSURE DENSITY AND ELIMINATE HONEYCOMBING.

I hereby certify that this plan, specification or report was prepared by me or under my direct supervision and that I am a duly Licensed Professional Engineer under the laws of the State of Minnesota
Aaron D. Hass
 AARON D. HASS
 Date 1-20-17 Lic. No. 264124