



6th Street Closure

Saint Paul, Minnesota



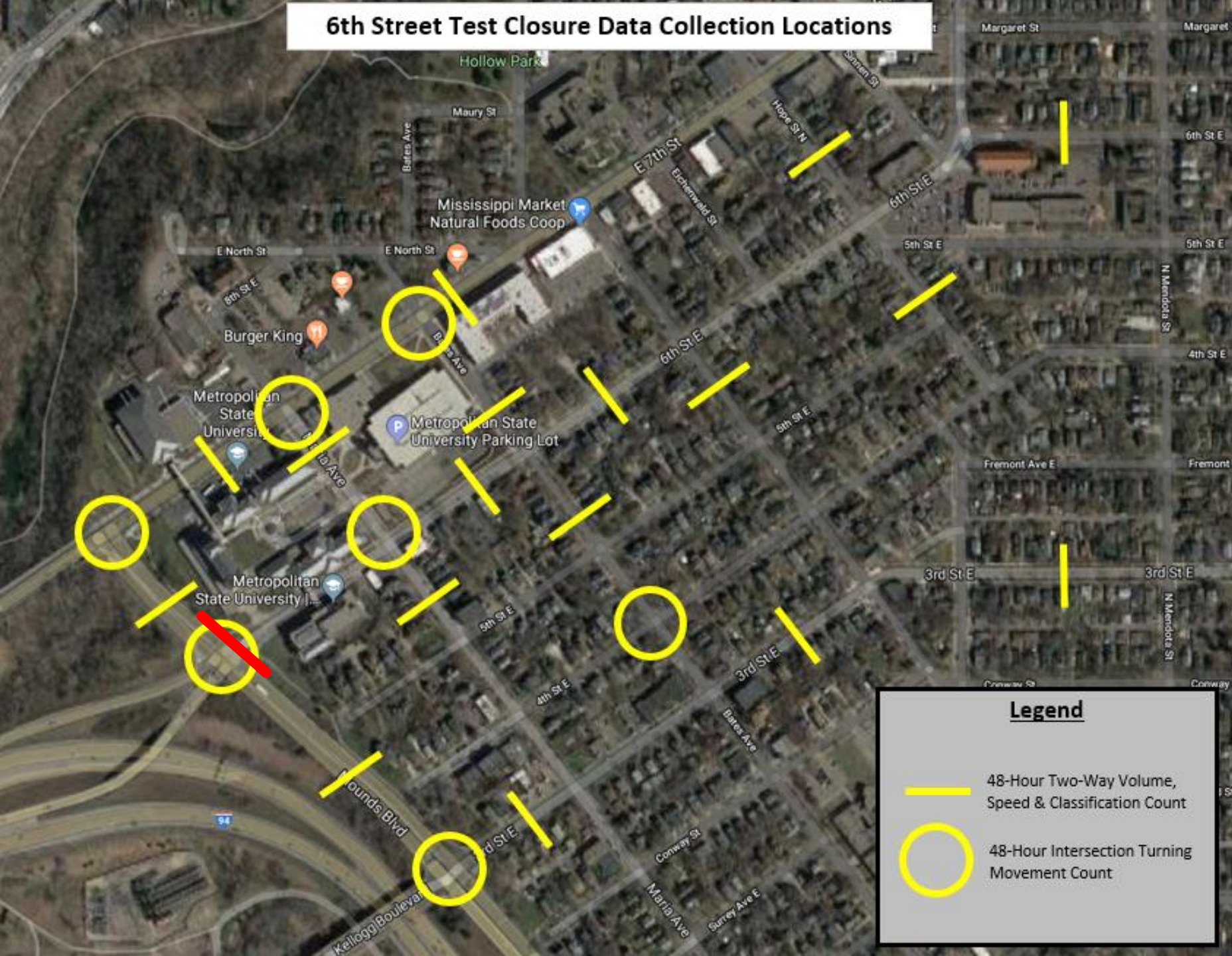
Jacob Rojer | Traffic Engineer

Max Moreland | Senior Traffic Engineer

6th Street Closure - Process

1. Data Collection
2. Traffic Analysis

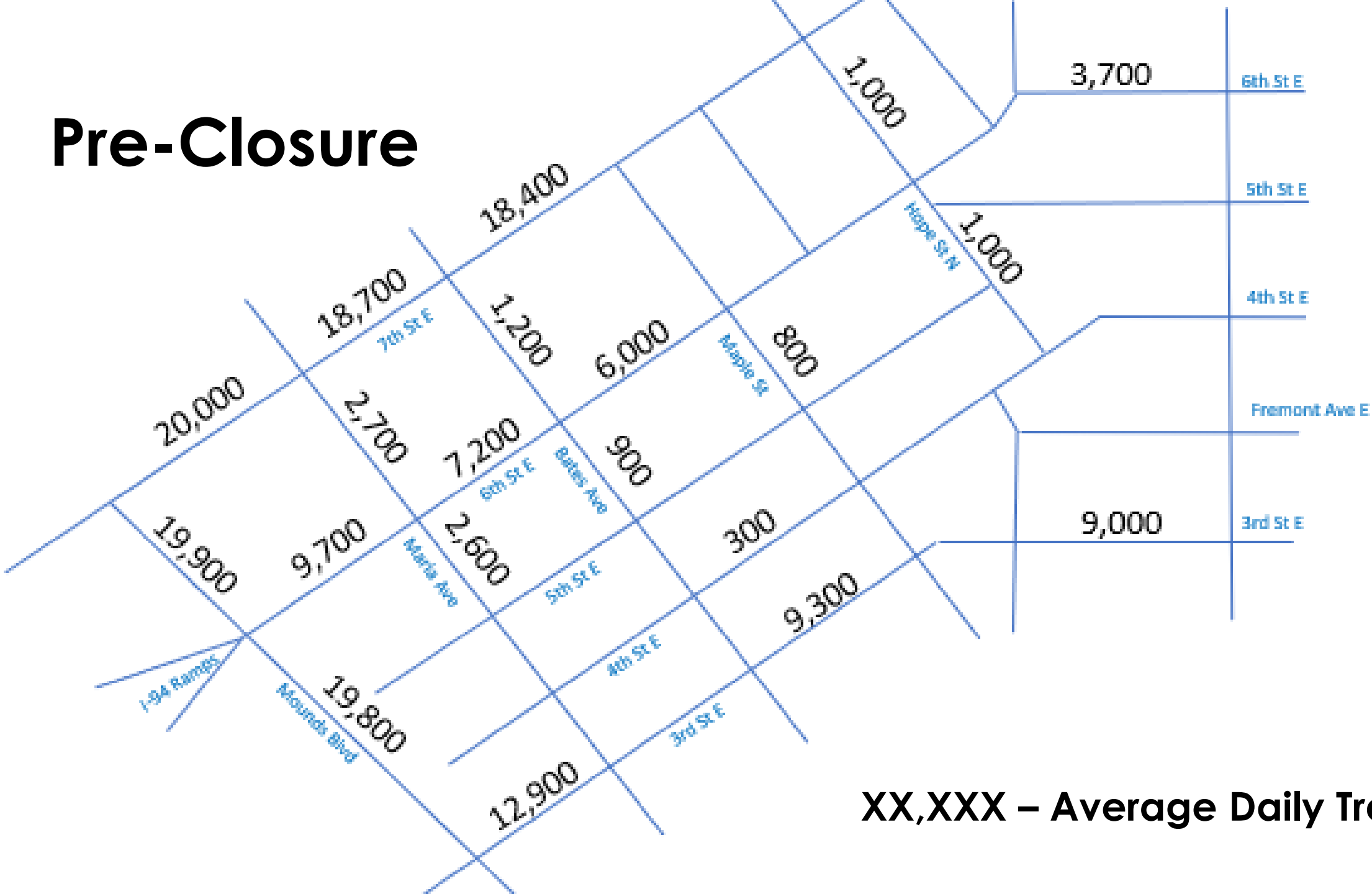
6th Street Test Closure Data Collection Locations



Spack
CONSULTING

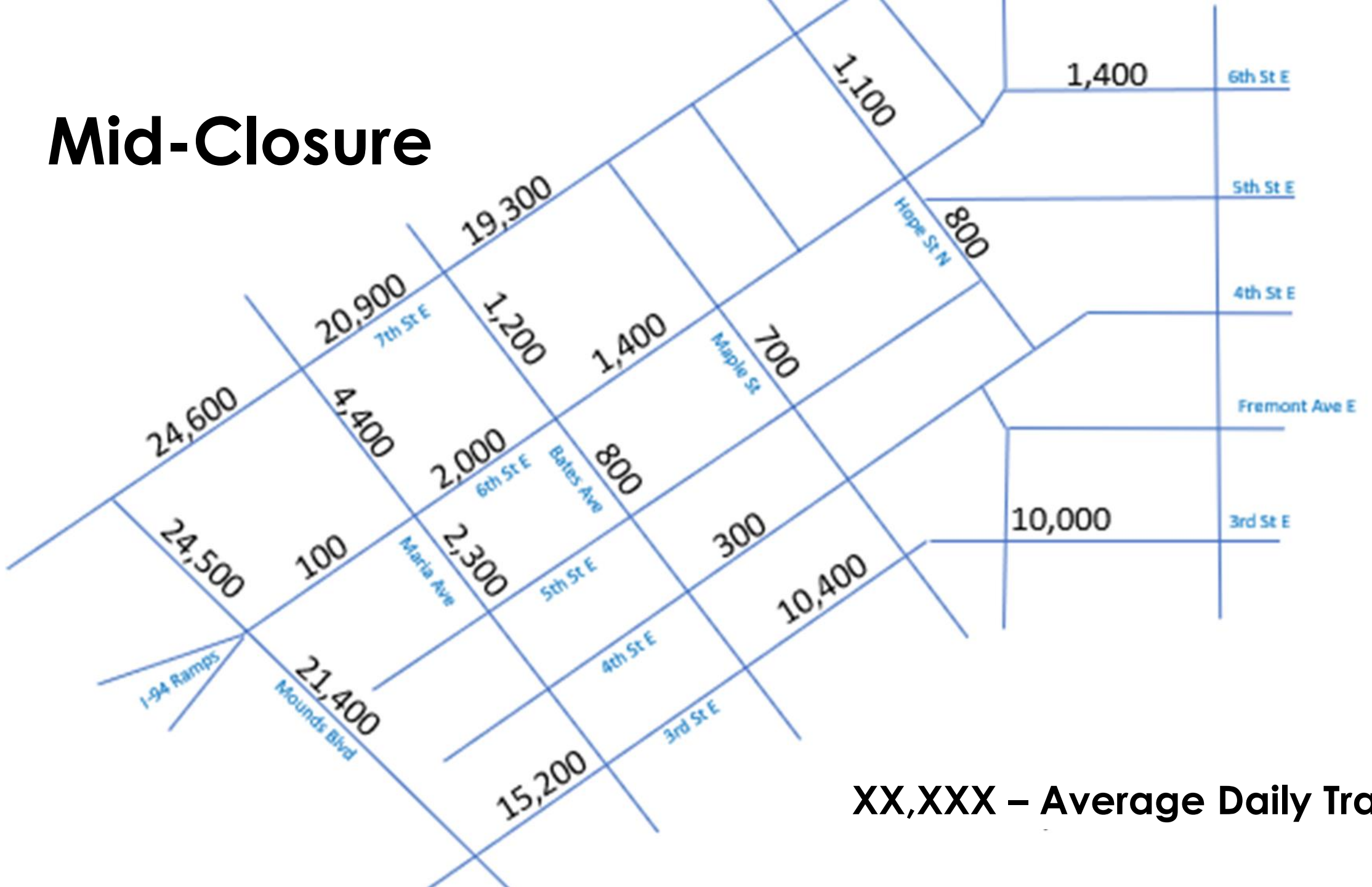


Pre-Closure



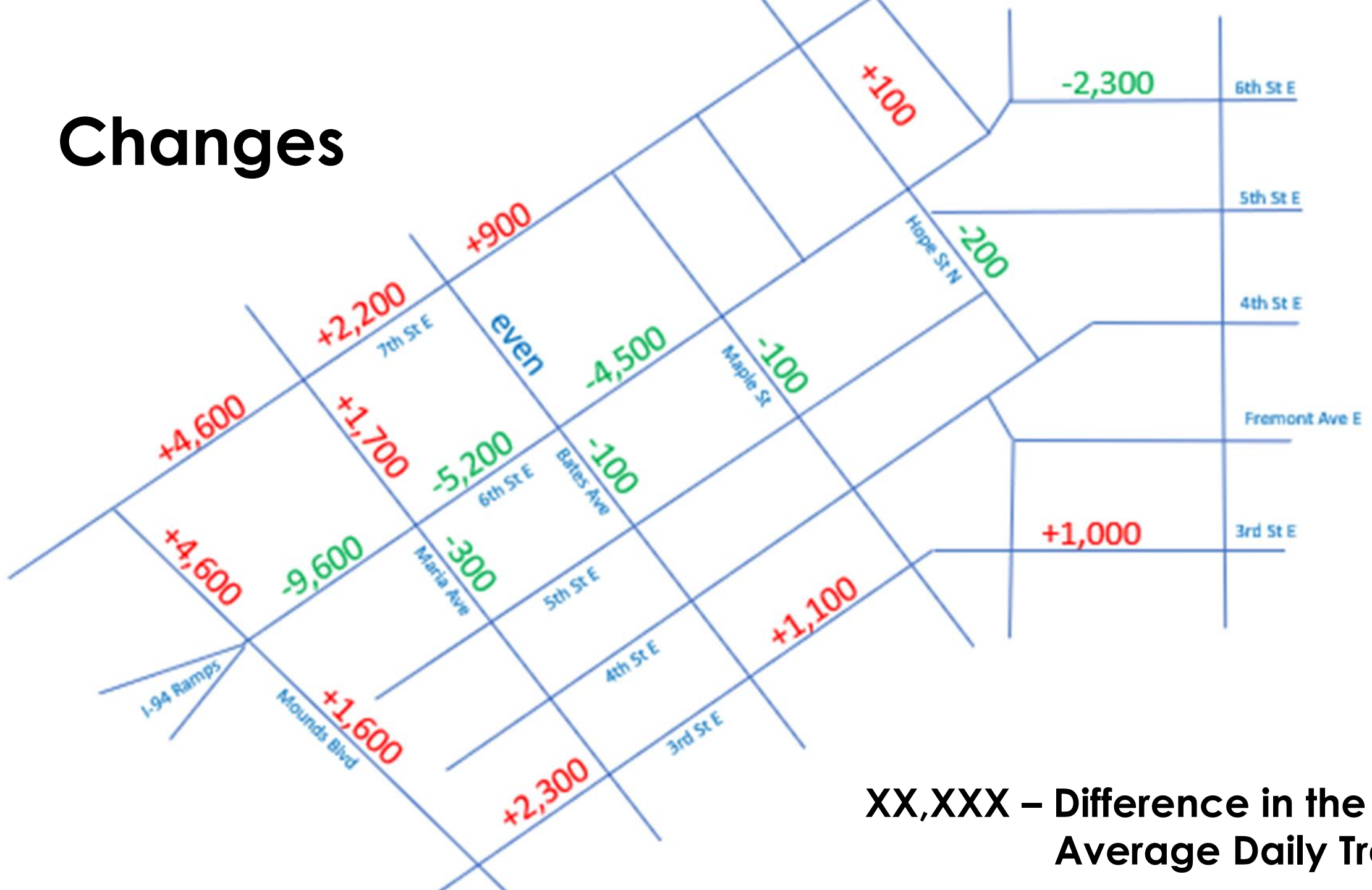
XX,XXX – Average Daily Traffic

Mid-Closure

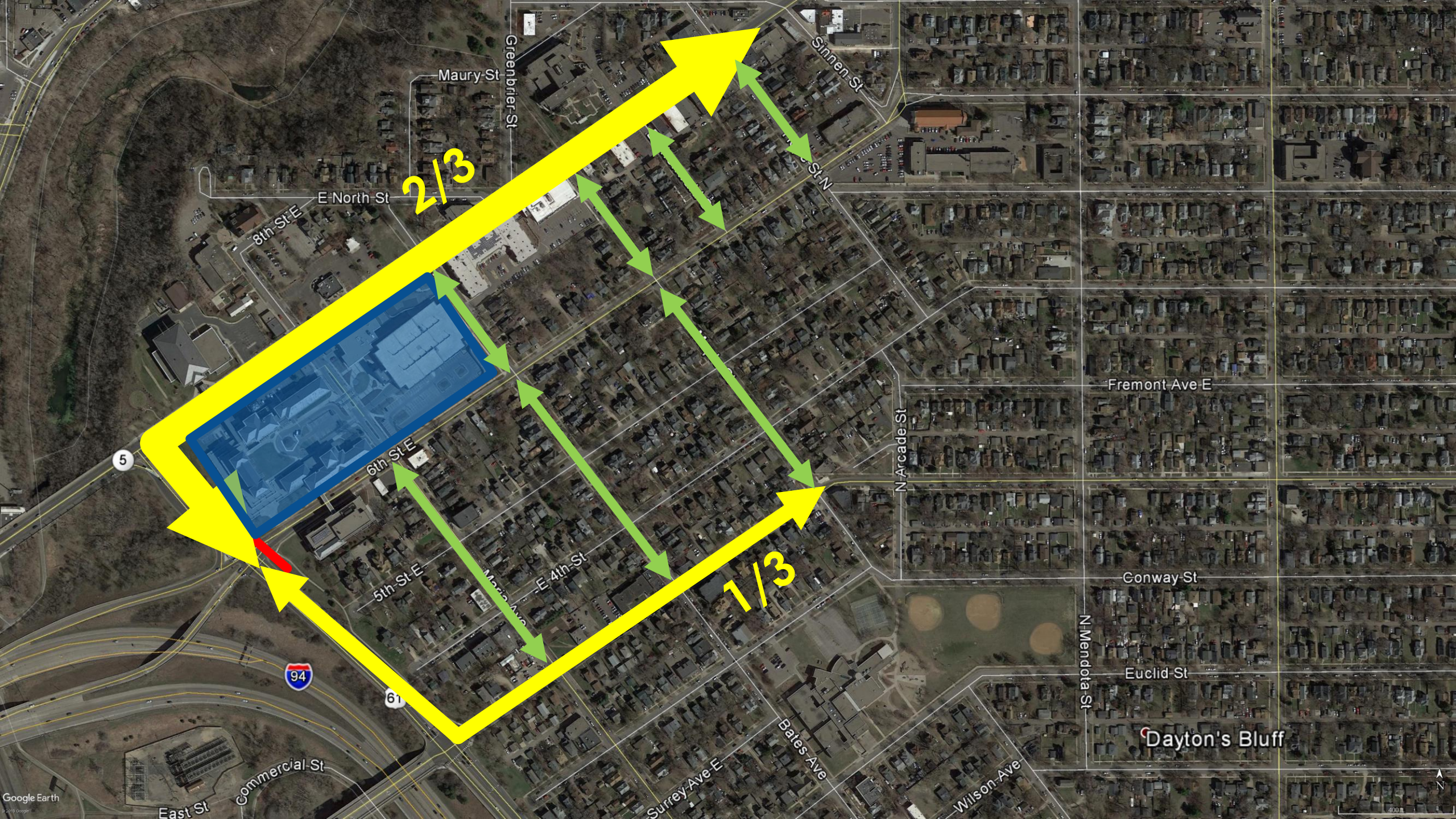


XX,XXX – Average Daily Traffic

Changes



XX,XXX – Difference in the Average Daily Traffic

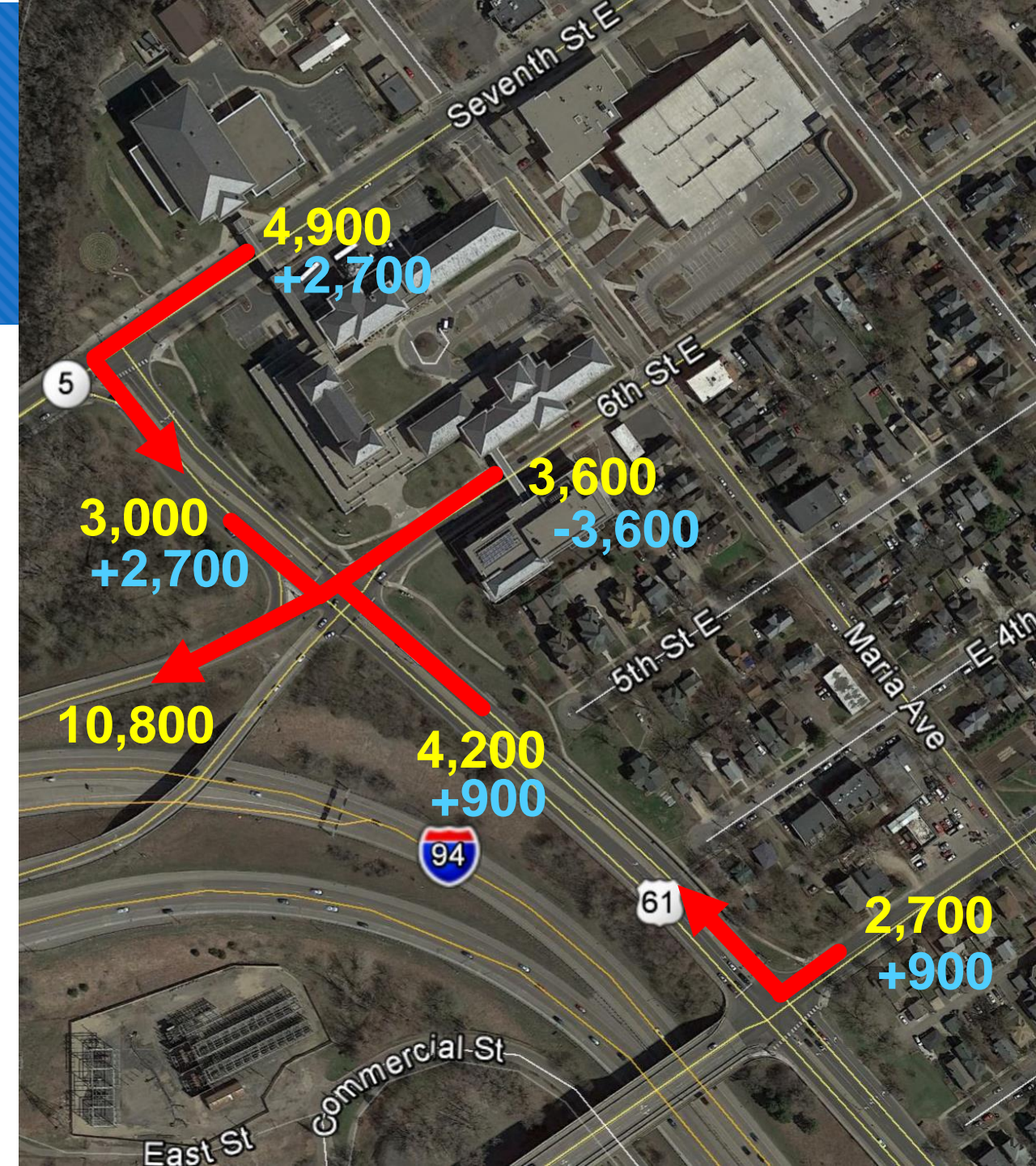
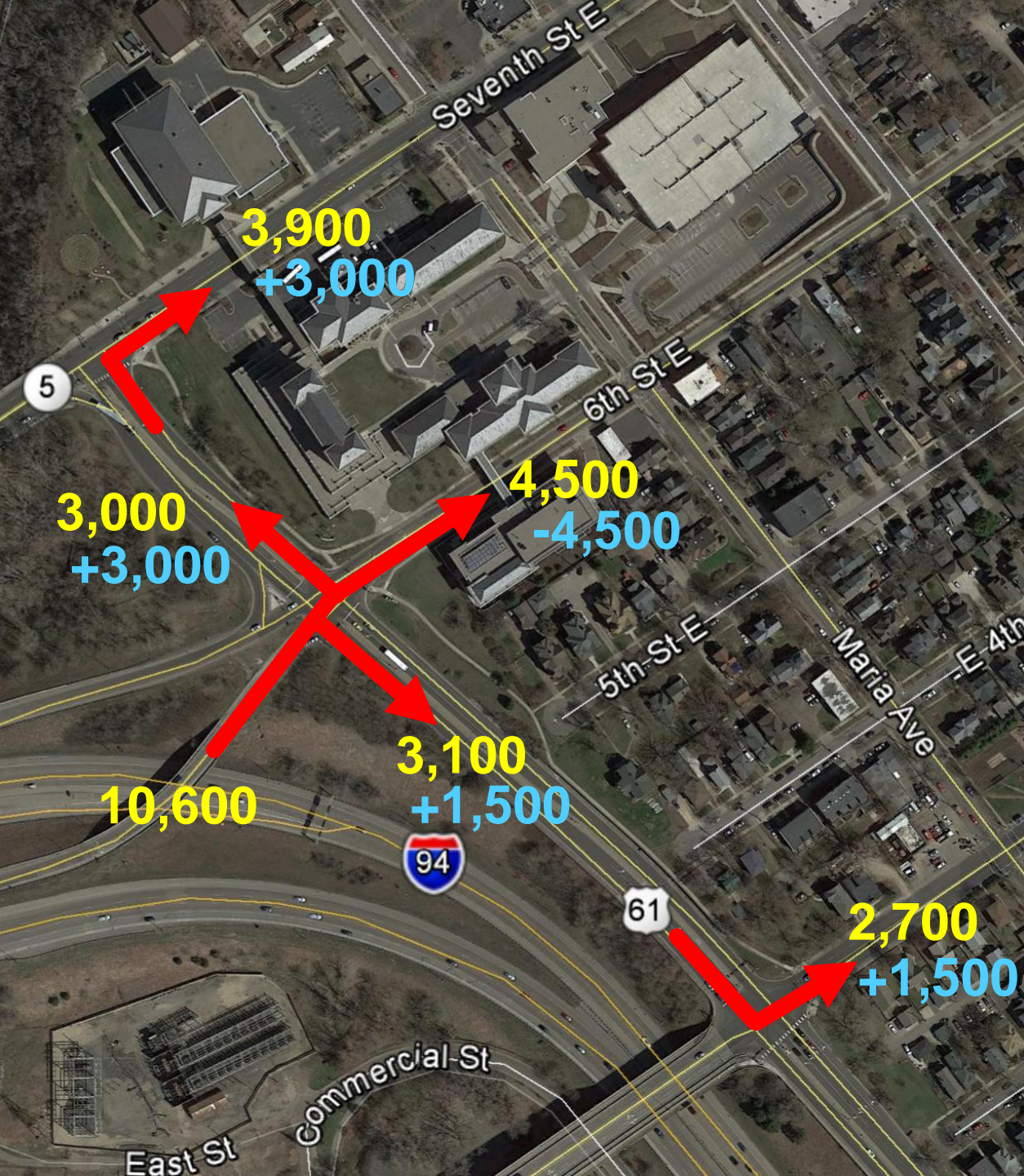


2/3

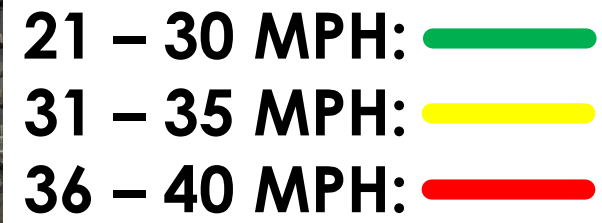
1/3

Dayton's Bluff

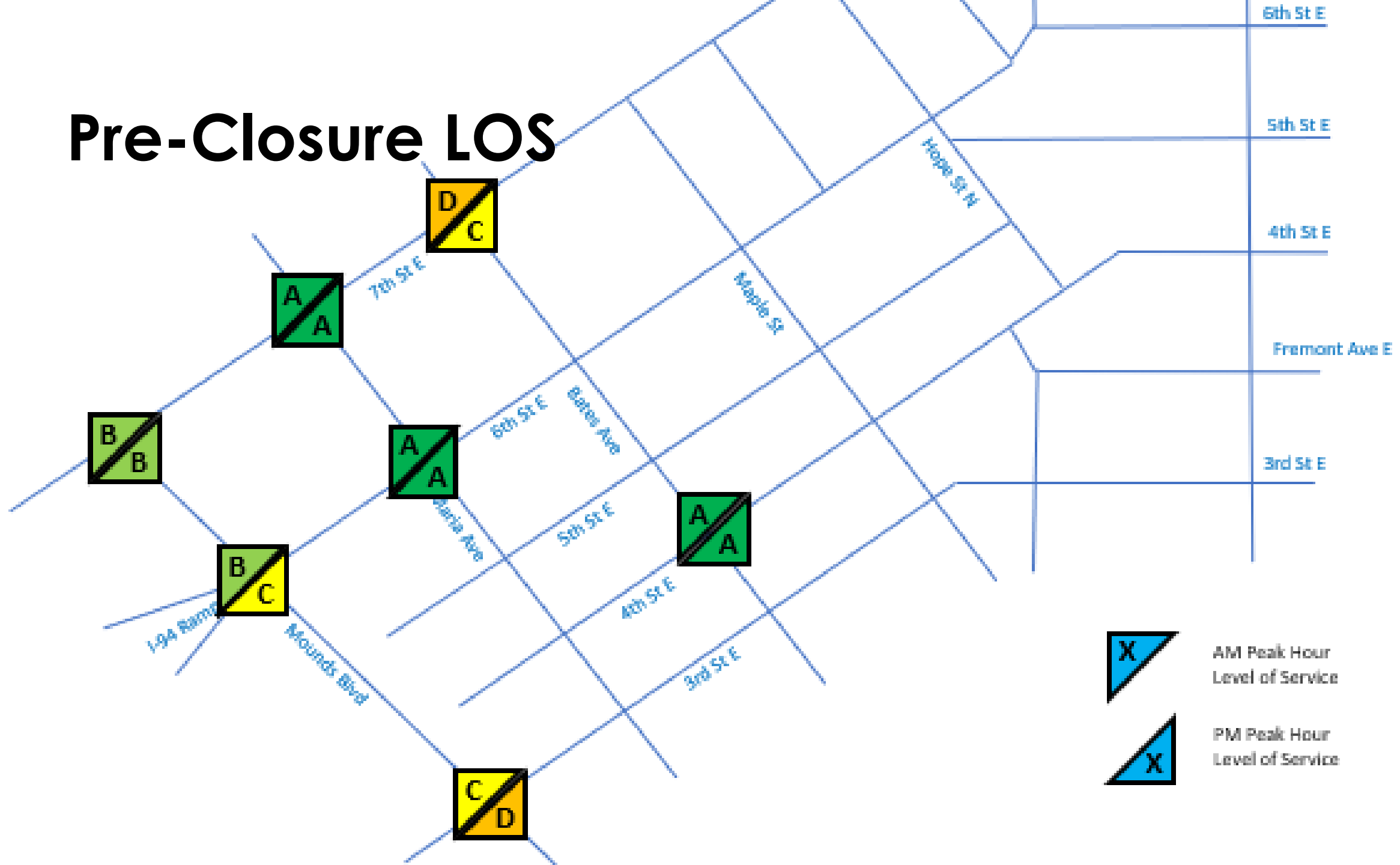




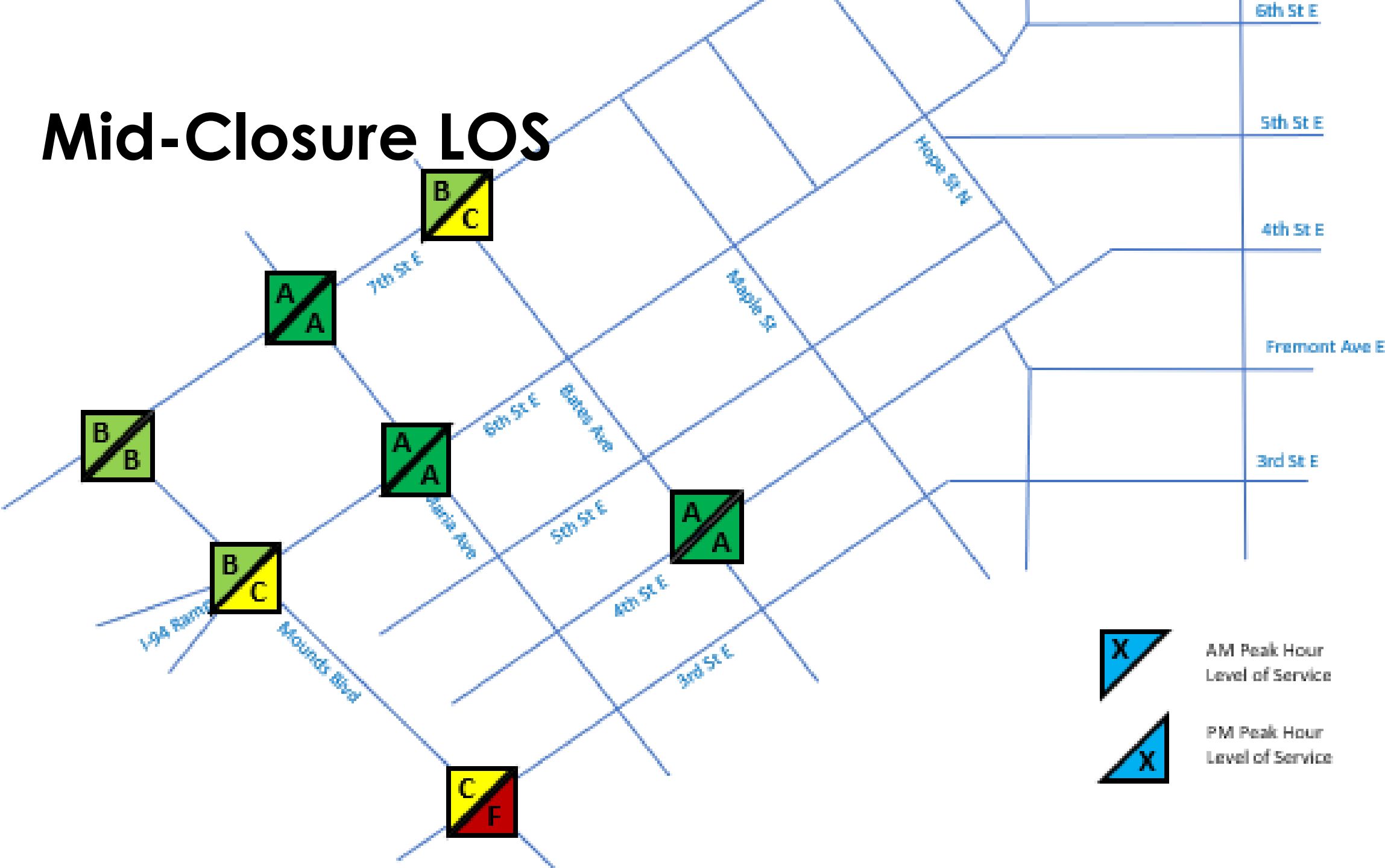
85th Percentile Speeds



Pre-Closure LOS



Mid-Closure LOS



Findings

- Volume changes
- Intersection operations
- 85th percentile speeds