

CITY OF SAINT PAUL

Public Works

Division of

Street Design and Construction





Griggs-Scheffer Paving Project Phase I



CITY OF SAINT PAUL

Public Works

Street Design and Construction

Chris Engelmann - Project Manager

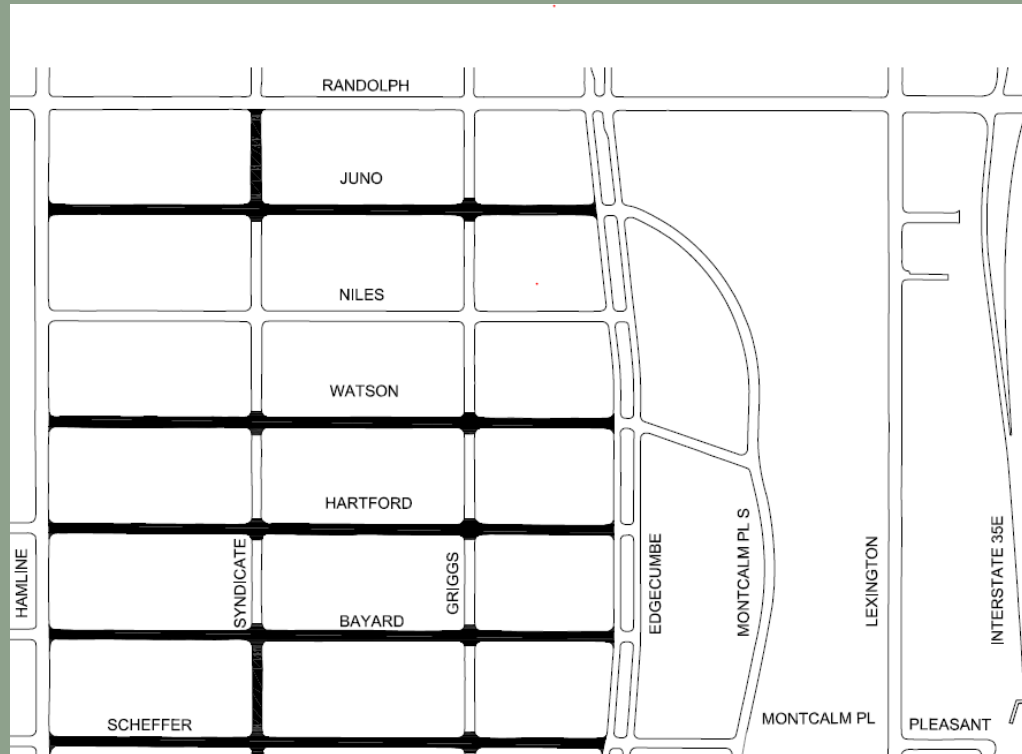
651-266-6084

<https://www.stpaul.gov/departments/public-works/street-design-and-construction>



GRIGGS-SCHEFFER

Project Map



www.stpaul.gov/construction



GRIGGS-SCHEFFER

Presenters

Project Engineer	Chris Engelmann	651-266-6084
Street Lighting	Ben Hawkins	651-266-6256
Forestry	Zach Jorgensen	651-632-2437
SPRWS (Water)	Graeme Chaple	651-266-6882
Sewers	Aaron Hass	651-266-6171
Real Estate Section	Lynn Moser	651-266-8858
Capital Region Watershed District	Andrew Novak	651-644-8888



GRIGGS-SCHEFFER

Project Schedule

- This is the 2nd public meeting for the project and is informational only.
- The 1st public meeting was held in September 2019 and provided early information related to the project to identify potential conflicts/coordination issues.
- City Council approval/Public Hearing in early 2020.
- Start construction spring/summer of 2020 – aim to be ready as soon as the weather permits.
- Planned end of major construction fall of 2020.
- The scope of the project may be adjusted should the bid prices exceed the available funding and/or based on work progression. Work not completed in 2020 is planned to be completed in 2021.

GRIGGS-SCHEFFER

What is the Project Improving?

- New concrete curb and gutter
- New pavement (32-foot width)
- Concrete driveway aprons
- Sidewalk and ADA-compliant pedestrian ramps
- Utility upgrades
- Lantern-style street lighting
- Urban forest, removal and tree planting
- Sodded boulevards

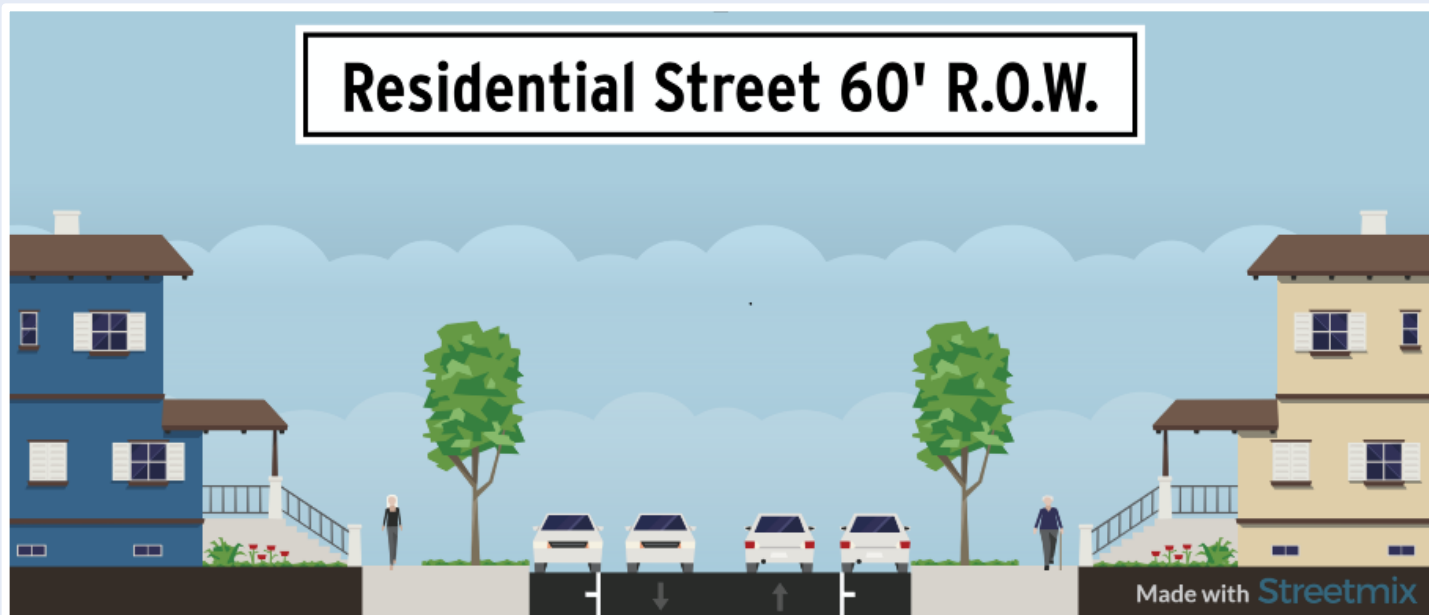
GRIGGS-SCHEFFER

Before and After



GRIGGS-SCHEFFER

Typical Residential Section



GRIGGS-SCHEFFER

Concrete Curb and Gutter with Catch Basins

Before



After



GRIGGS-SCHEFFER

Bituminous Pavement

Before



After



GRIGGS-SCHEFFER

Sidewalk Replacement



Sidewalk Replacement and Infill

- 5 to 6-foot walk
- Due to substantial utility work, most sidewalk will be replaced
- Typically set at property line
- Infill in areas of road reconstruction

GRIGGS-SCHEFFER

ADA-Compliant Pedestrian Ramps

Fan Ramp



Directional Ramp



GRIGGS-SCHEFFER

Driveways



Driveway aprons will be concrete regardless of any existing special material

New driveway aprons will be reconstructed at 12-foot-max, 30 feet beyond the garage



GRIGGS-SCHEFFER

Grade and Sod Boulevards

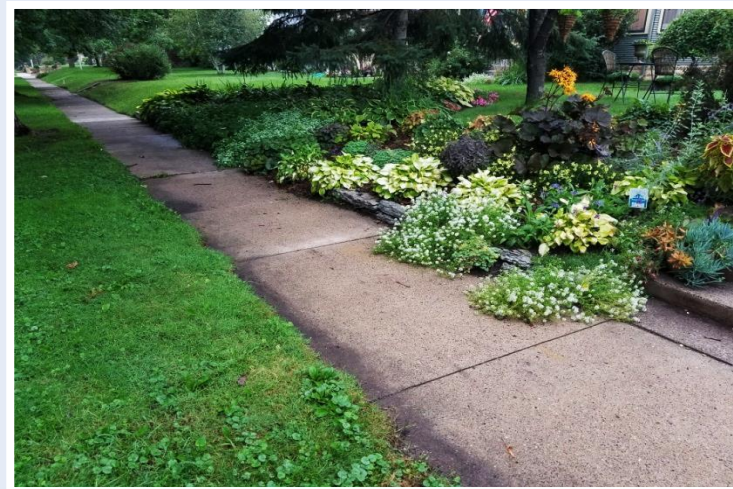


GRIGGS-SCHEFFER

Boulevard Gardens

If you have a boulevard garden or plants you want to salvage:

- Coordinate with the project to identify areas you do not want sod placed
- Plan to remove plants in the spring ***before construction work begins***



Capitol Region Watershed District

Andrew Novak

651-644-8888

www.capitolregionwd.org



CRWD BOULEVARD RAINGARDENS



CAPITOL REGION WATERSHED DISTRICT

Boulevard Curb-Cut Raingardens

Collect rainwater runoff from streets through an inlet in the curb. Water can then soak into the ground instead of flow to the Mississippi River.



Boulevard Curb-Cut Raingardens

Raingarden
plants have
roots that
allow runoff
to quickly
soak deep into
the ground.
Water in
raingardens
infiltrates
within 24
hours



Boulevard
Curb-Cut
Raingardens

Care for Raingardens:

- Weed
- Trash
- Sediment
- Replace
Plants



Thank You!

Rachel Funke

Capitol Region Watershed District
www.capitolregionwd.org

(651) 644-8888
rfunke@capitolregionwd.org



CITY OF SAINT PAUL

Public Works

Traffic and Lighting

Ben Hawkins

Customer Service Desk 651-266-6200

<http://www.stpaul.gov/departments/public-works/traffic-lighting>

GRIGGS-SCHEFFER

Lantern-style Street Lighting

Before



After



CITY OF SAINT PAUL

Parks and Recreation

Forestry

Zach Jorgensen

Forestry Customer Service 651-266-6400

<https://www.stpaul.gov/departments/parks-recreation/natural-resources/forestry>

GRIGGS-SCHEFFER

Tree Planting



GRIGGS-SCHEFFER

Tree Planting



Buckeye
Catalpa
Crabapple
Hackberry
Honeylocust
Hybrid Elm
Ironwood
Kentucky Coffee
London Plane
Oak
River Birch
Serviceberry

GRIGGS-SCHEFFER

Below the Surface





SAINT PAUL REGIONAL WATER SERVICES

SPRWS Engineering Service Desk

651.266.6270

1900 Rice Street

Saint Paul, MN 55113

<https://www.stpaul.gov/departments/water-services/lead-household-water>

WATER MAIN REPLACEMENT



- ▶ Water main is approx. 8' feet deep
- ▶ Most existing residential water mains are 6" diameter cast iron pipe.
- ▶ Most mains are replaced as 8" diameter ductile iron pipe or 8" PVC dependent on existing soils
- ▶ Installation by PW Contractor, SPRWS providing temporary water
- ▶ Water main must pass a series of bacterial tests, pressure tests, and conductivity tests prior to being put in service

TEMPORARY WATER MAINS



- ▶ 2" PVC pipe laid in the grassy area or on edge of sidewalk
- ▶ Fully Bacterially tested prior to hook-up
- ▶ Will become quite warm during the summer
- ▶ Water is provided at no cost when connected to temporary water

TEMPORARY WATER CONNECTION



- ▶ Back fed through outside hose spigot through the use of a grey potable water rated hose.
- ▶ A wye is installed to allow use of garden hose while connected
- ▶ Notification of temporary water will be posted on front door.
- ▶ Temporary water crew will need to access the water meter inside building twice, once during install and once for the take down

WATER SERVICE CONNECTION



- ▶ Water services are re-connected to the main once the watermain is fully tested and live.
- ▶ Most existing copper services are reconnected with only excavation at the watermain
- ▶ All lead services are replaced with copper pipe from the main to property line or water service valve box at SPRWS cost

LEAD SERVICE REPLACEMENT



- ▶ All Lead water services will be replaced from the water main to the property line or water service stop box
- ▶ Replacements to stop box are only done if there is an obstruction at the property line or if a private plumber has already replaced the water service inside property to the stop box

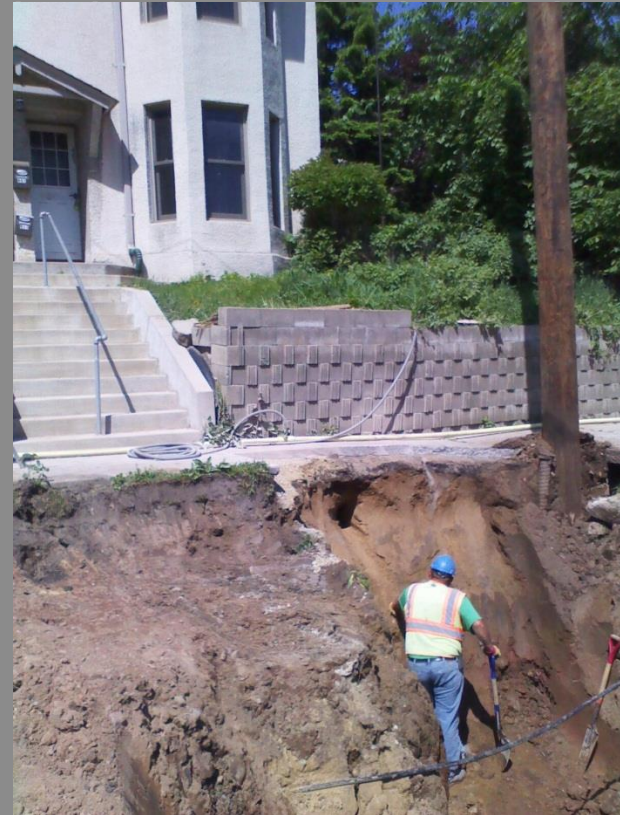
LEAD SERVICE REPLACEMENT



- ▶ New 1" copper water service installed in same location as the old 5/8ths or 3/4ths lead service
- ▶ old lead pipe either removed or abandoned in place, depending on situation
- ▶ Transition joint installed at property line from new copper service to existing material inside property.

LEAD SERVICE REPLACEMENT INSIDE PROPERTY

- ▶ Can be assessed onto taxes over 20-years
- ▶ Building owner will have to obtain private plumber and get quotes
- ▶ Excavation of yard generally not needed
- ▶ Costs are reduced because restoration is done in the ROW by the project
- ▶ Plumber list and information will be mailed to property owner addresses
- ▶ Additional information available from the SPRVS Engineering Service Desk 651.266.6270



CONTACT INFO

► Graeme Chaple

Damage Prevention and Inspections Supervisor

Cell: 651.775.3030

Email: graeme.chaple@ci.stpaul.mn.us

► SPRWS Engineering Service Desk

651.266.6270

1900 Rice St

Saint Paul, MN 55113

CITY OF SAINT PAUL

Public Works

Sewer Division

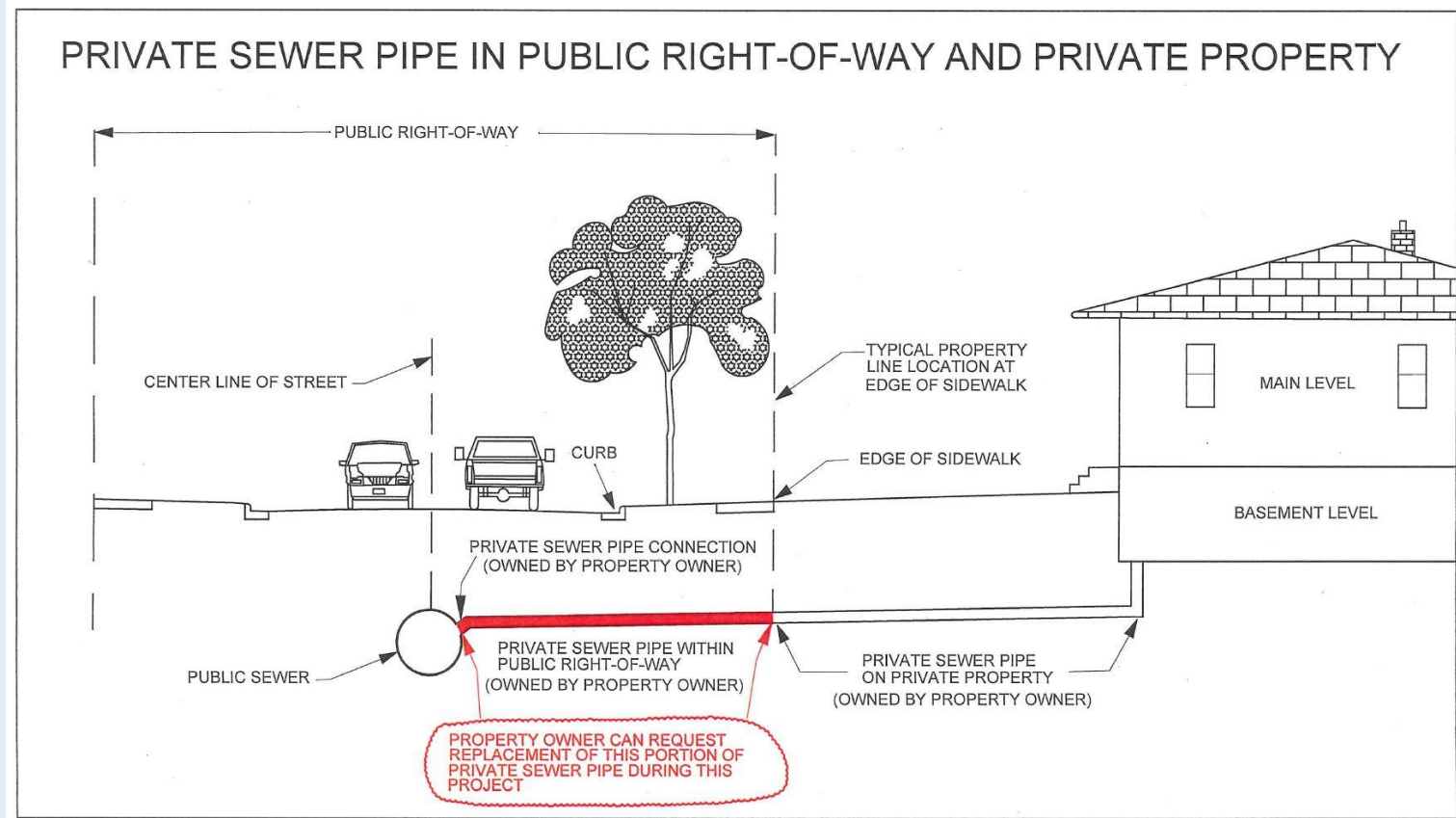
Sewer Utility Permit Desk 651-266-6234

PW-SewerCounter@ci.stpaul.mn.us

<https://www.stpaul.gov/departments/public-works/sewer-utility-divison/property-owner-information>

GRIGGS-SCHEFFER

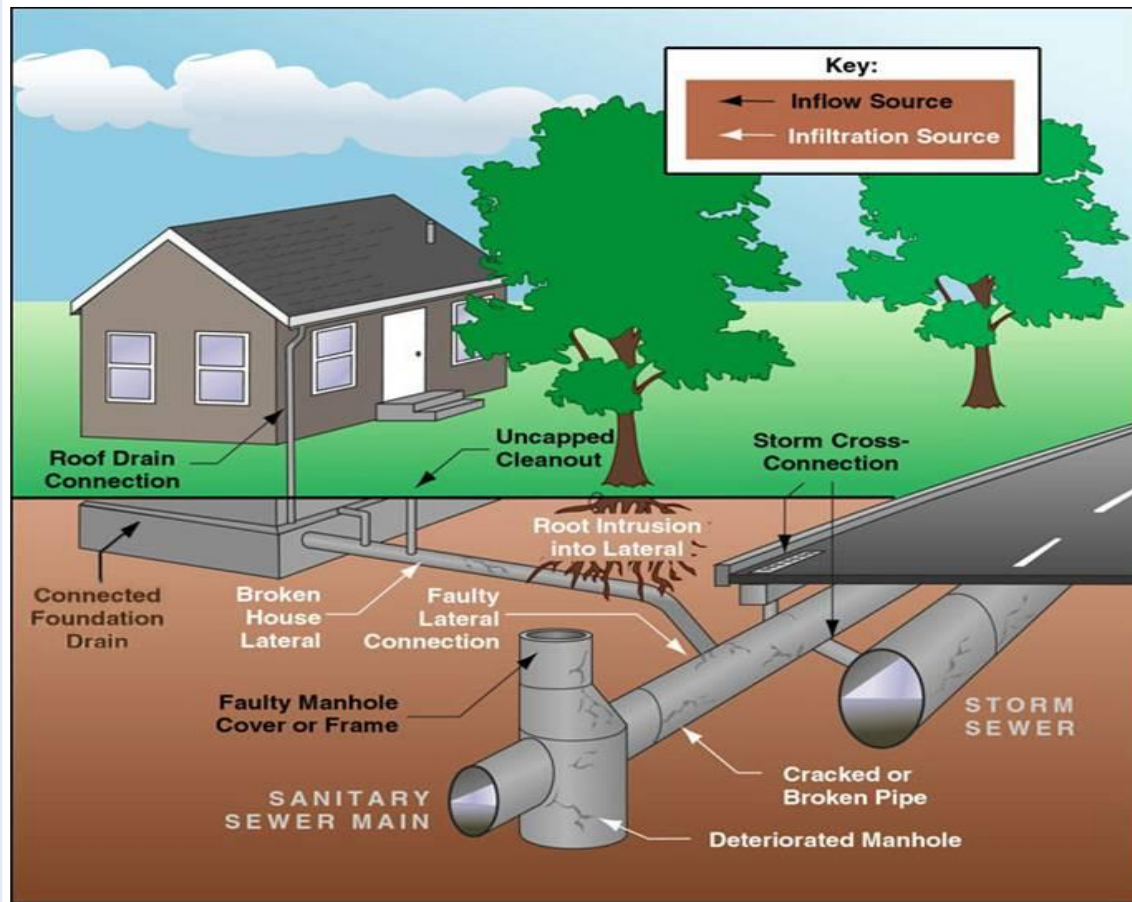
Sanitary Sewer Replacement Option



Sewer Division

GRIGGS-SCHEFFER

Sanitary Sewer Service Issues



GRIGGS-SCHEFFER

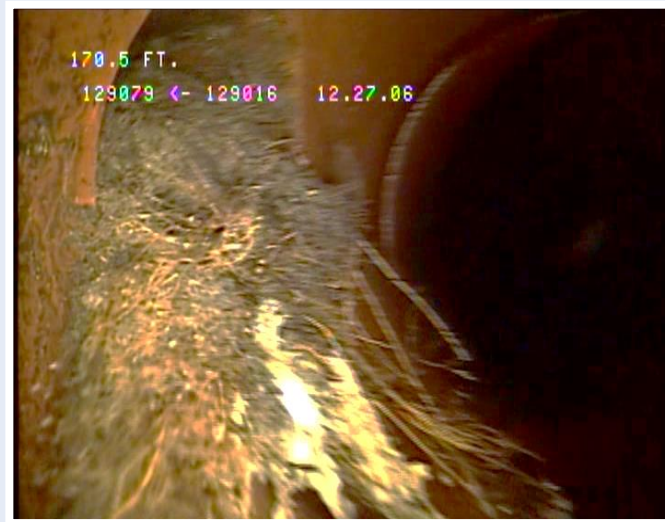
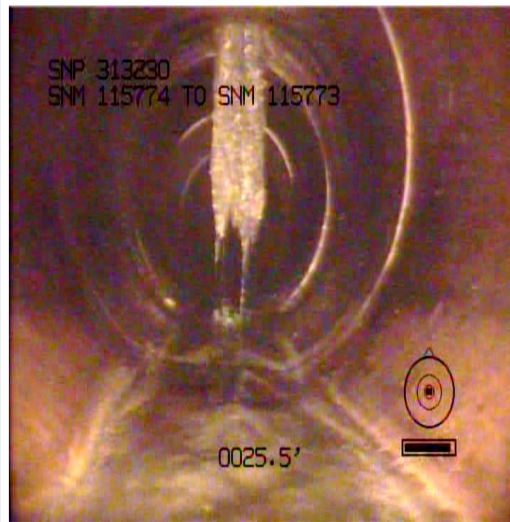
Warning Signs of a Defective Sewer Service

- Does your drain run slowly or gurgle?
- Do you have sewer odors?
- Do you know where your sewer service runs?
- Are there bushes or trees planted over it?
- Has your sewer line ever been cleaned and inspected?
- Do you have a garbage disposal and do you use it for everything?
- Is there a sinkhole or depression near your home, boulevard, or street?

GRIGGS-SCHEFFER

Common Sewer Problems

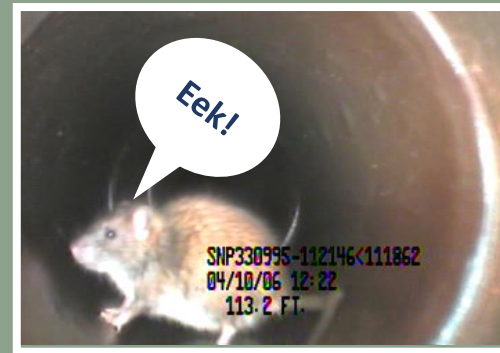
- Dropped connection to the main
- Broken clay pipe
- Root intrusion



GRIGGS-SCHEFFER

Benefits of Repairing the Sanitary Sewer Service

- Extends the system service life
- Reduces the risk of:
 - ✓ Sewer backups
 - ✓ Sinkholes
 - ✓ Rodent access
- Cheaper during construction
 - ✓ Fixed rate
 - ✓ Don't have to pay for street restoration
 - ✓ 20-years to pay



GRIGGS-SCHEFFER

Sanitary Sewer Service Cost

COST COMPARISON INFORMATION

Replacing Your Sewer Service From the Main to the Property Line

During Construction

Approximately **\$3,500**

- Cost to property owner can be spread out over a 20-year term/assessment
 - No street restoration costs

After Construction

Typically More Than **\$5,000**

- Restoration costs are paid by the property owner

If you are interested – **ACT NOW!**



Sewer Division

GRIGGS-SCHEFFER

Living Through a Construction Project

Noise

Dust

Mud

Limited Access

Inconvenience



GRIGGS-SCHEFFER

Living Through a Construction Project

- Your street will be dug up numerous times
- The work is done in layers and often by different crews doing different types of work
- Plan on 4 months of disruption
- Residents and emergency vehicle access will be maintained at all times

GRIGGS-SCHEFFER

Living Through a Construction Project

- All of the construction is done by private construction companies
- They are very busy and this isn't their only project
- Most road work is weather-dependent and rain *will* delay work
- Contractors work 5-to-6 days a week from 7:00 a.m. until 7:00 p.m.
- The City of Saint Paul will have an onsite representative (project inspector) to inspect the contractor's work

GRIGGS-SCHEFFER

Living Through a Construction Project



ROAD CLOSED TO THRU TRAFFIC

You can get to your house, but you cannot get all the way through - you will eventually come to a **ROAD CLOSED** sign



ROAD CLOSED **DO NOT ENTER!**

GRIGGS-SCHEFFER

Living Through a Construction Project

- The contractor will post **NO PARKING** signs everywhere
- If there is *no* activity on your block, you may park in front of your house
- If there *is* activity on your block, please leave contact information on the dashboard - the contractor would rather call you than a tow truck
- Police agree not to ticket unless requested by Public Works or the contractor



GRIGGS-SCHEFFER

Living Through a Construction Project

- You will receive a letter prior to the start of construction - keep this for names and contact numbers
- A flyer will be handed out a week before construction starts on your block - check front doors for flyers
- Onsite Public Works inspector - the project inspector should be your **first call** with questions or issues
- Weekly updates will be posted to the city's website at **www.stpaul.gov/construction**

GRIGGS-SCHEFFER

Living Through a Construction Project



GRIGGS-SCHEFFER

Living Through a Construction Project



GRIGGS-SCHEFFER

Living Through a Construction Project



GRIGGS-SCHEFFER

Living Through a Construction Project



GRIGGS-SCHEFFER

Living Through a Construction Project



CITY OF SAINT PAUL

Office of Financial Services

Real Estate Section

Assessments

Lynn Moser

Assessment Office 651-266-8858

www.stpaul.gov/assessments

GRIGGS-SCHEFFER

Saint Paul Streets Program

Cost of Street Projects

Project Cost Versus City Cost

- Project cost - calculated by the Department of Public Works
 - Covers street work only
 - Often less than project cost since other non-street work (sewers, water lines, etc.) not included
- City cost – component of project cost

Financing Street Projects

- Previous financing – street improvement bonds
 - Required 20% of project costs assessed to property owners
- Current financing – street reconstruction bonds
 - Requires City Council–approved 5-year plan for street reconstruction projects
 - No minimum assessment percentage required

GRIGGS-SCHEFFER

Saint Paul Streets Program

Determining the Assessment

- Rates are not determined at this time
- Additional information will be available later this fall



GRIGGS-SCHEFFER

Saint Paul Streets Program

Determining the Assessment

- Determine assessable cost – portion of city cost to be assessed
- Calculate per-foot assessment rate – divide amount by total frontage
- Calculate each property's assessment – multiply assessment rate by each property's frontage
- Verify reasonableness of assessments – based on appraisal firm analysis of project benefit to property values

GRIGGS-SCHEFFER

Assessment Schedule

Assessment Process/Approval

- Construction approved early 2020 (Final Order)
- Assessment approved fall of 2020 (Ratification of Assessment)

Pending Assessment

- Assessment is “pending” after the Final Order is approved
 - Visible for property owners or title companies
 - Payments are accepted (partial or full)

Levied Assessment

- Assessment is “levied” after the Ratification of Assessment is approved
 - Invoice mailed, 30 days to pay to avoid interest
 - If not fully paid, annual installments automatically go onto property taxes
 - Paid over 20 years with simple interest and a flat fee
- Delayed payment of Special Assessment for Senior Citizens or Permanently Disabled
 - Not a forgiveness of the assessment
 - Interest accrues the same as non-deferred

GRIGGS-SCHEFFER

Saint Paul Streets Program

Sanitary Sewer and Water Connections

- Requested by property owner
- Separate assessment(s)

View / pay assessment at www.stpaul.gov/assessments



Questions?



GRIGGS-SCHEFFER

Contacts

Project Manager	Chris Engelmann	651-266-6084
Project Engineer	Cheng Xiong	651-266-6168
Public Works Street Lighting	General Line	651-266-6200
Parks and Recreation	Forestry Unit	651-266-6400
SPRWS (Water)	Service Desk	651-266-6270
Public Works Sewers	Utility Permit Desk	651-266-6234
Real Estate Section - Assessments	General Line	651-266-8858
Capital Region Watershed District	Rachel Funke	651-644-8888

