



# JOHNSON PARKWAY TRAIL

OPEN HOUSE NO. 1  
January 17, 2019

# AGENDA

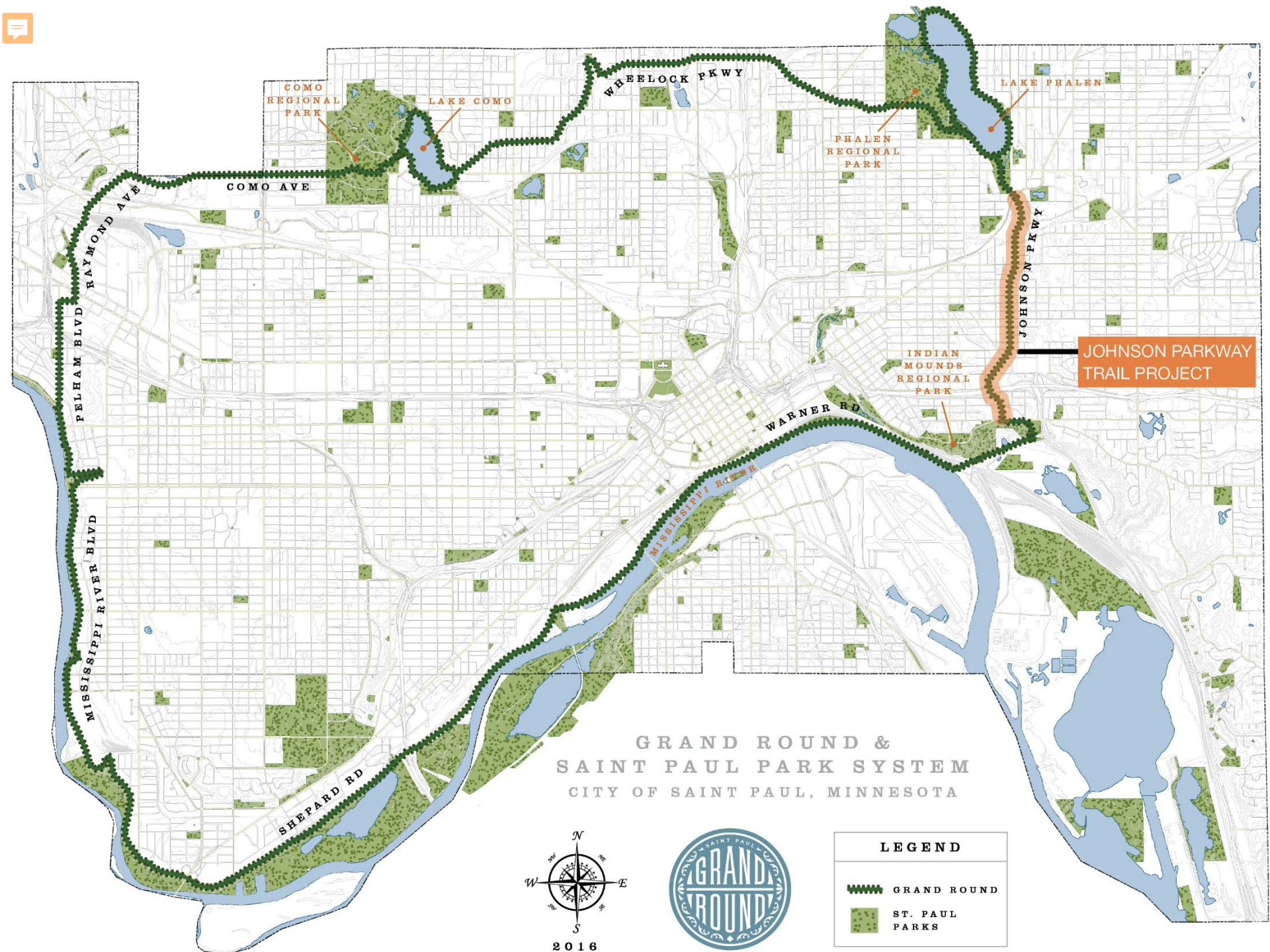
5:00 to 5:15 Welcome & Sign-In

5:15 to 5:45 Presentation

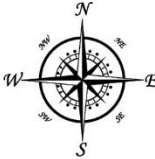
- Grand Round History
- Johnson Parkway Corridor
- Traffic Analysis
- What's Next?
- Questions

5:45 to 7:00 Open House





GRAND ROUND &  
SAINT PAUL PARK SYSTEM  
CITY OF SAINT PAUL, MINNESOTA



2016



LEGEND	
	GRAND ROUND
	ST. PAUL PARKS





# VISION



The Saint Paul Grand Round is a scenic parkway for pedestrians, bicyclists, and motorists that connects people to parks, nature, neighborhoods, and businesses.









---

JOHNSON PARKWAY TRAIL



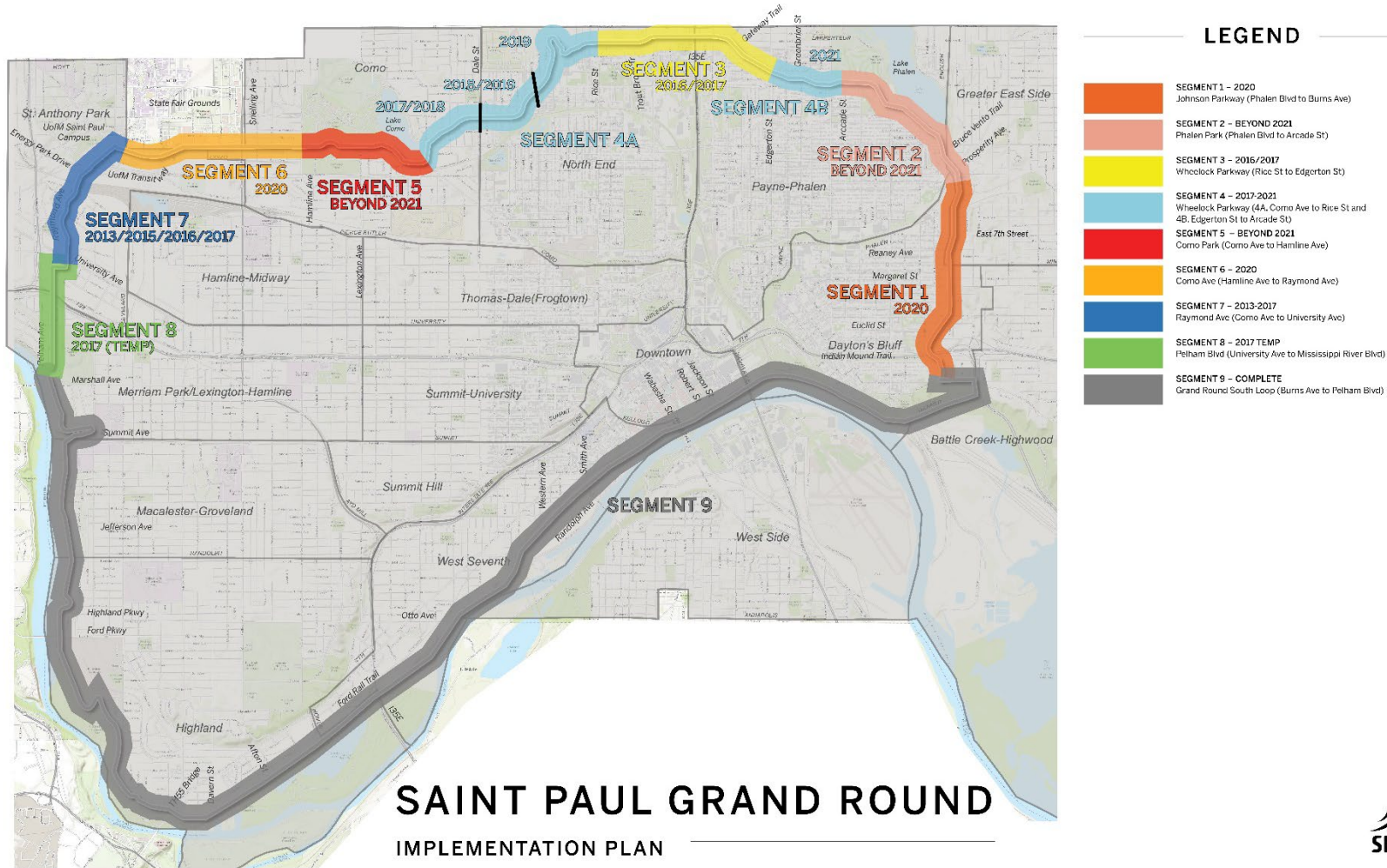
# Grand Round – Over 100 Years of Planning

-  Park System Plan (HW Cleveland – 1872)
-  Grand Round Master Plan (2000)
-  Bike Plan (2015)
-  Grand Round Design & Implementation (2016)
-  Pedestrian Plan (Draft 2018)
-  City Comprehensive Plan (Draft 2018)





# Grand Round Schedule

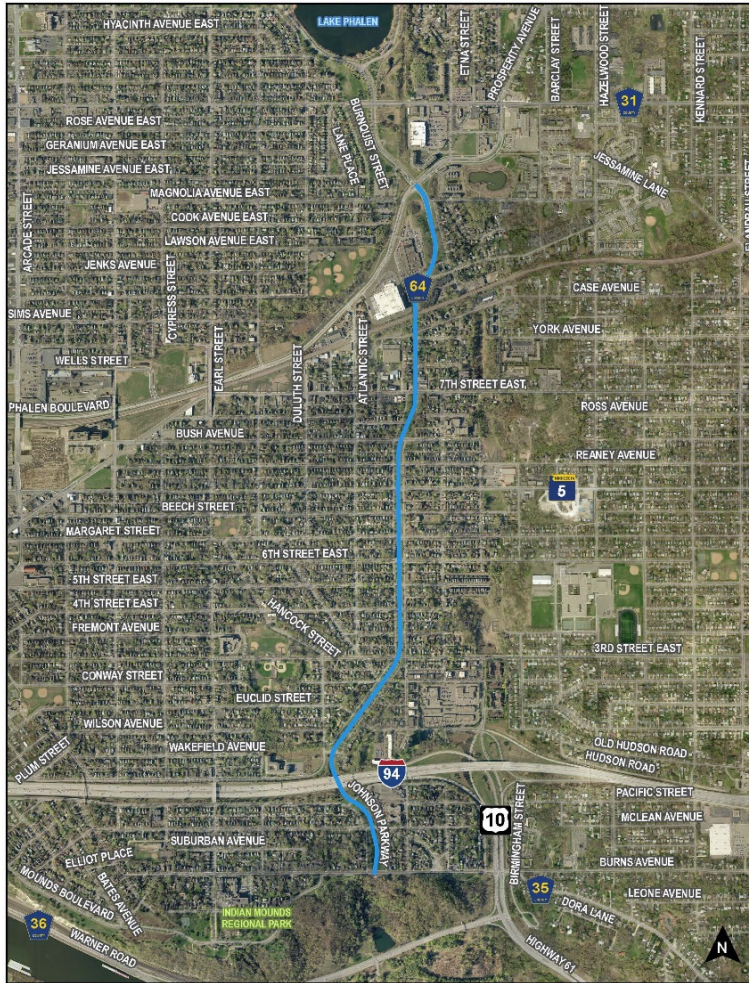


JOHNSON PARKWAY TRAIL





# Johnson Parkway Corridor



- 2-mile Trail for Walking and Biking
- Improves Safety for All Users
- Eliminates a mile-long gap in walking facilities
- Provides barrier access across I-94 and the Railroad to the north
- Provides direct connections to two regional parks and trails



JOHNSON PARKWAY TRAIL

# Johnson Parkway Trail - Purpose and Need



Promote health, safety, and comfort of all users along Johnson Parkway



JOHNSON PARKWAY TRAIL



# Johnson Parkway Trail - Purpose and Need



Promote health, safety, and comfort of all users along Johnson Parkway



JOHNSON PARKWAY TRAIL

# Johnson Parkway Trail - Purpose and Need



Make purposeful connections with system of public open space that improves quality of life.



JOHNSON PARKWAY TRAIL





# Johnson Parkway Trail – Project Cost



**\$5,500,000  
FEDERAL  
FUNDING**



**\$1,500,000  
CITY  
FUNDING**



**\$7,000,000  
TOTAL  
PROJECT  
COST**

There will be no assessments associated with this project



---

**JOHNSON PARKWAY TRAIL**



# Johnson Parkway Trail – Schedule



# Johnson Parkway Trail – Project Scope



## **In Project Scope:**



Construct a new 2-mile trail for walking and biking along the eastern boulevard between Burns and Phalen



Install new lantern-style lighting along the eastern boulevard



Improve the designs of intersections to improve safety



Ensure all trail crossings meet ADA standards



Treat stormwater and plant new trees



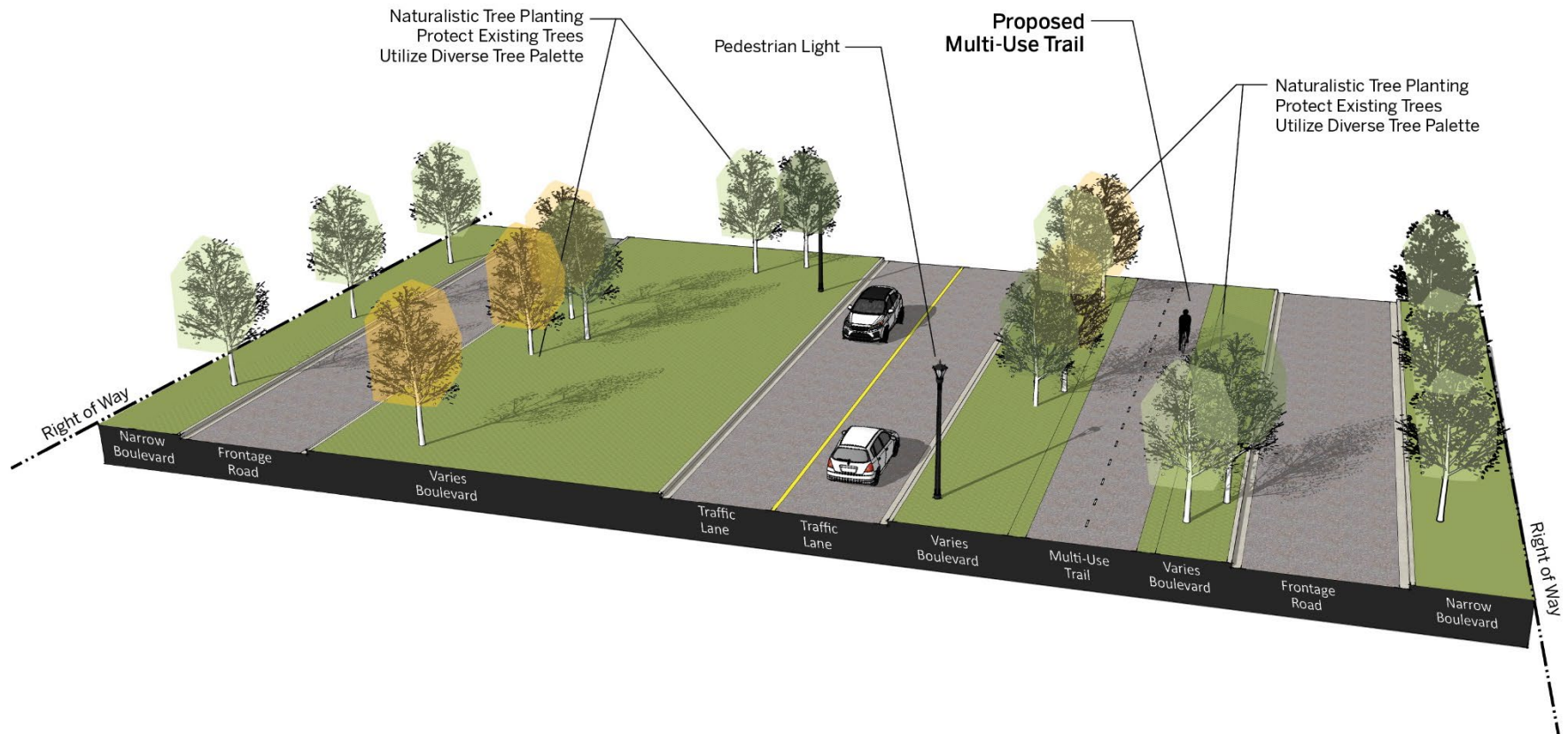
## **Not in Project Scope:**



This project will not reconstruct Johnson Parkway



# Johnson Parkway Corridor – Typical Section



JOHNSON PARKWAY TRAIL



# Exploring Intersection Closures



Intersection closures are being explored



Why?



Most conflicts (crashes) occur at intersections



Removing access points reduces conflicts for all modes and therefore increases safety



Additional benefit:



Increases green space along Johnson Parkway

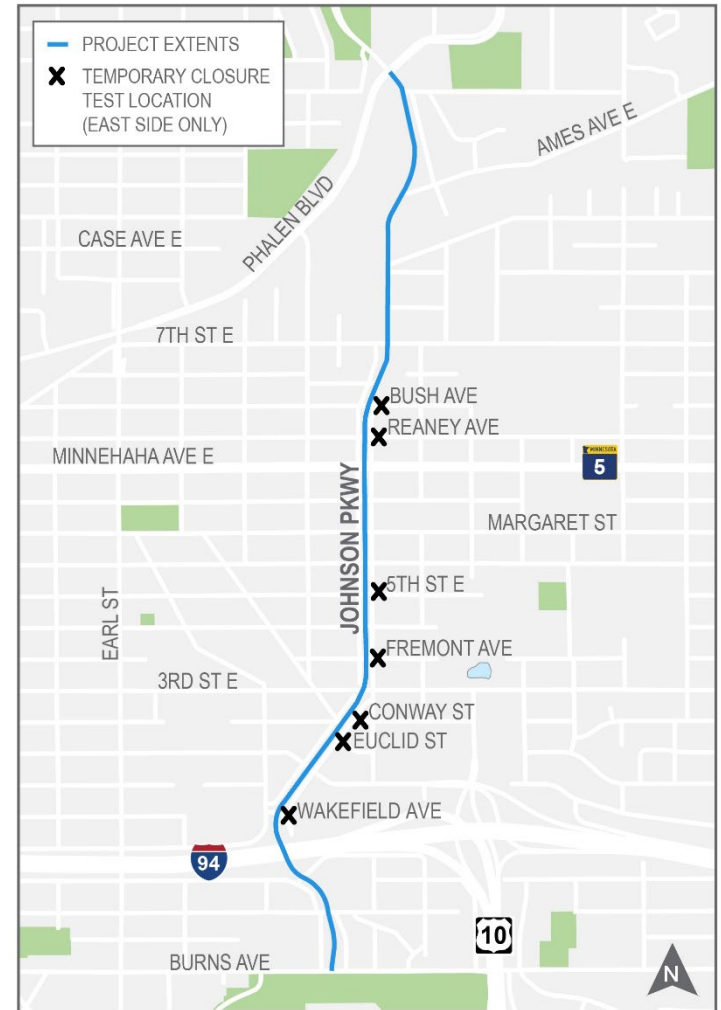


# Exploring Intersection Closures

- **Step 1:** Determining where to test intersection closures:
  - Explored traffic volumes
  - Considered access to neighborhood
  - Avoided signalized intersections
- **Step 2:** Temporary test of Intersection Closures
- **Step 3:** Perform a traffic study to analyze impacts



# Traffic Review - Test Closure Locations



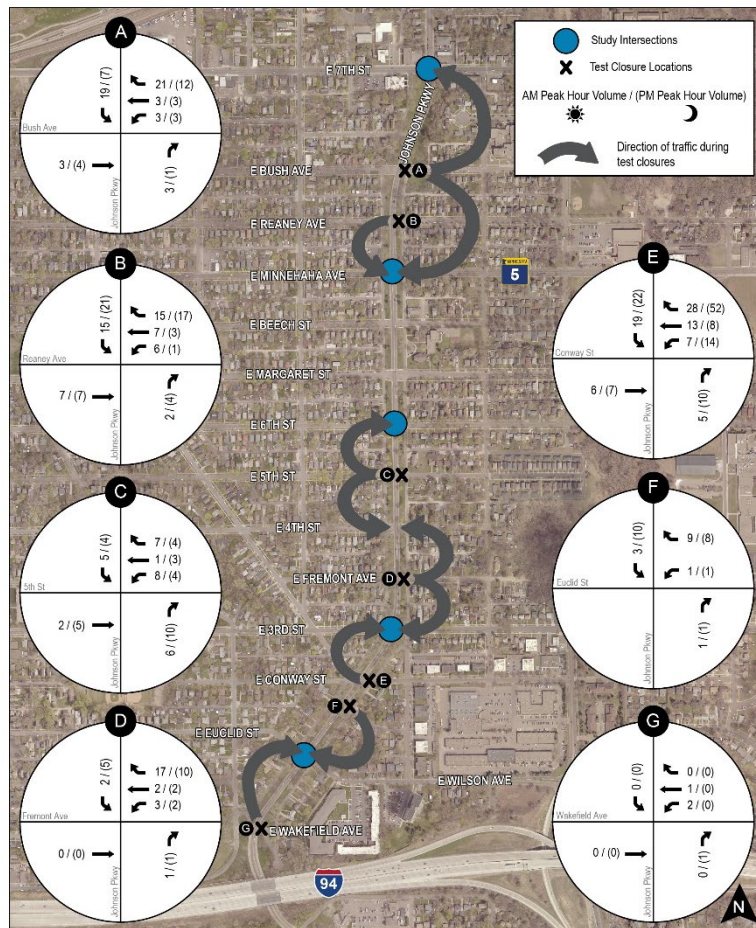
**JOHNSON PARKWAY TRAIL**





# Traffic Review – Test Closures

## How were traffic patterns altered ?

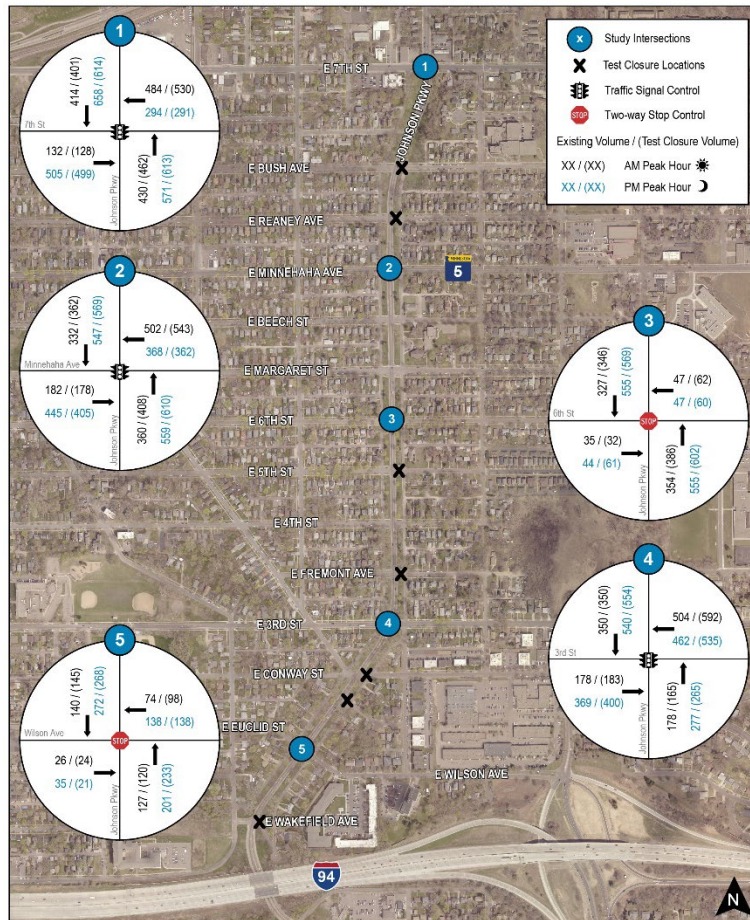


## Predictably, traffic shifted to open intersections

These shifts were relatively small

# Traffic Review – Test Closures

How were open intersections affected ?



Saw traffic shifts to  
signalize intersections



Impacts can largely be  
mitigated through signal  
timing improvements



Existing issues can also  
be addressed



Corridor will function  
similar to today

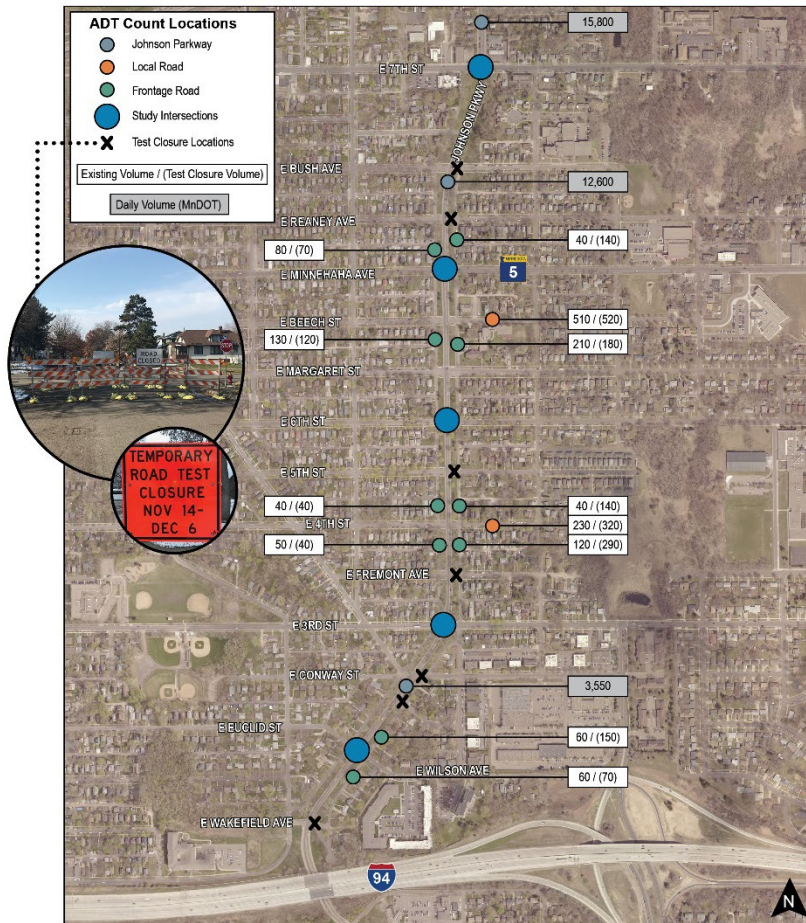


JOHNSON PARKWAY TRAIL



# Traffic Review - Test Closures

## Overall Findings:



**No major traffic issues during test closures**

**Small difference in traffic volumes during test**

- Small pattern shifts
- Within normal daily fluctuations

**Frontage roads still low daily volumes**

- Local volumes = <1,000
- Johnson Parkway = 3,500 to 12,600

**JOHNSON PARKWAY TRAIL**





# Intersection Closures: Next Steps

- Investigate Traffic Signal & Intersection Improvements
- Confirm Closure Locations
- Continue coordination with Police and Fire
- Evaluate design of walking and biking improvements



# What is Next?

- Collect feedback
- Review and process feedback
- Finalize proposed intersection closures
- Advance design plans

## 2<sup>nd</sup> Open House in Spring

- Invites will be sent out



# How to provide feedback?

---

- One-on-one
- Comment Cards
- Email Luke Hanson





# Thank You!!

Contact:

**Luke Hanson**

Department of Public Works

651-266-6146

luke.hanson@ci.stpaul.mn.us



**JOHNSON PARKWAY TRAIL**