

CITY OF SAINT PAUL

Public Works

Division of

Street Design and Construction



Washington Tech Magnet School Safe Routes To School (SRTS) Sidewalk Project



Washington Tech Safe Routes to School

Presenters

Project Manager	Chris Engelmann	651-266-6084
-----------------	-----------------	--------------

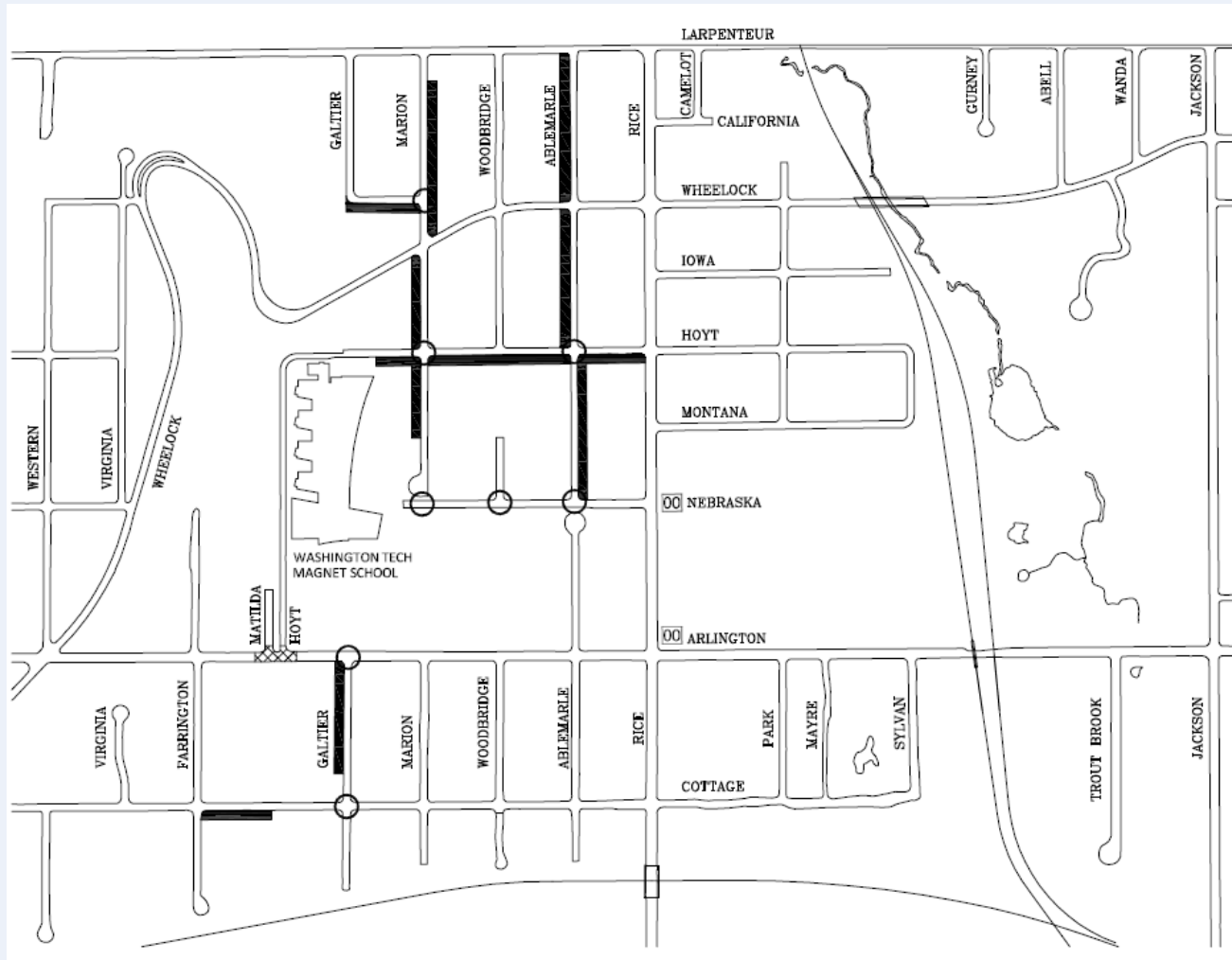
Project Engineer	Cheng Xiong	651-266-6168
------------------	-------------	--------------

Forestry	Zach Jorgensen	651-632-2437
----------	----------------	--------------



Washington Tech Safe Routes to School

Project Map



Washington Tech Safe Routes to School

Project Schedule

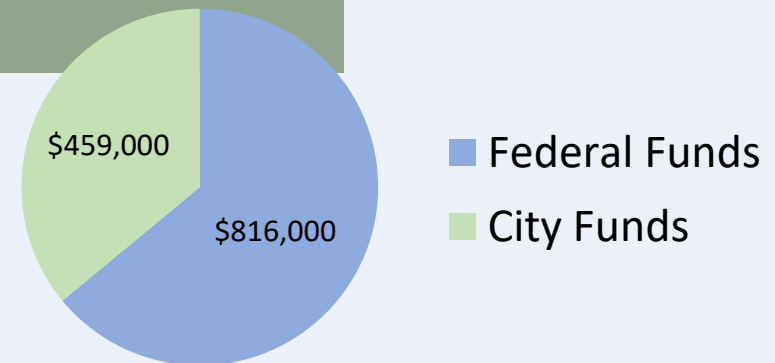
- This meeting is informational only
- City Council approval/Public Hearing in early 2019
- Design in early 2019
- Start construction summer of 2019
- End construction fall of 2020



Washington Tech Safe Routes to School

Funding

- Project cost estimate \$1,275,000
- Funding
 - Federal SRTS category \$816,000
 - City Capital Improvement Bonds \$459,000
- No direct assessments



Saint Paul Pedestrian Plan

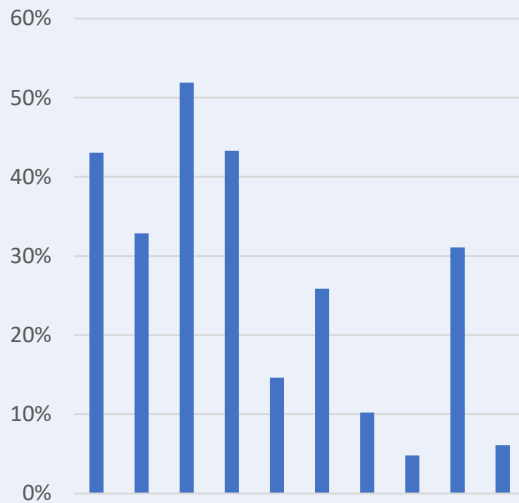
Our Vision

Saint Paul is a walking city.
We are more healthy,
resilient, and connected
when walking is safe and
appealing for all.



Saint Paul Pedestrian Plan

What Would Make Walking Safer and Easier for You?



Improving ways to cross busy streets (e.g. four-lane roads)



Adding sidewalks to streets without sidewalks



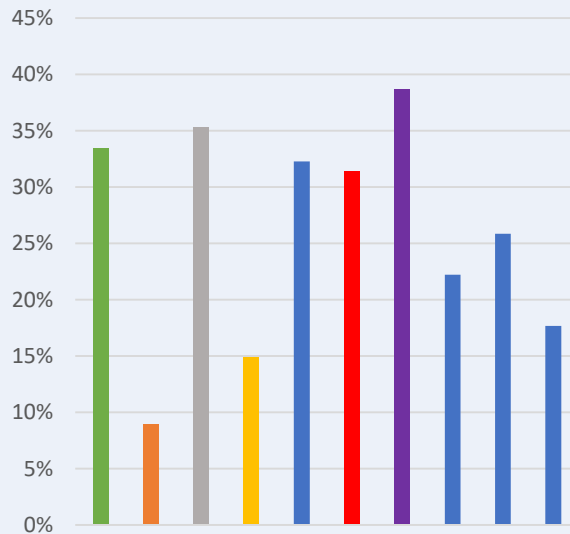
Improving snow and ice removal on sidewalks

Adding sidewalks to streets without sidewalks
Repairing cracks and surfaces on existing sidewalks
Improving snow and ice removal on sidewalks
Improving ways to cross busy streets (e.g. four-lane roads)
Adding barriers for people with mobility impairments
Improving ways to make people more visible at night
Addressing barriers to safe walking and driving behaviors
Adding street lighting to make people walk more safely
Educating people about safe walking via programs and events
Enforcing traffic laws that help people walk more safely

Saint Paul Pedestrian Plan

Where is it Most Important to Improve Walking?

Equity Health Connectivity Density Destinations Transit Safety



Along and across busy streets
(e.g. four-lane roads)



Areas of the city that lack
sidewalks

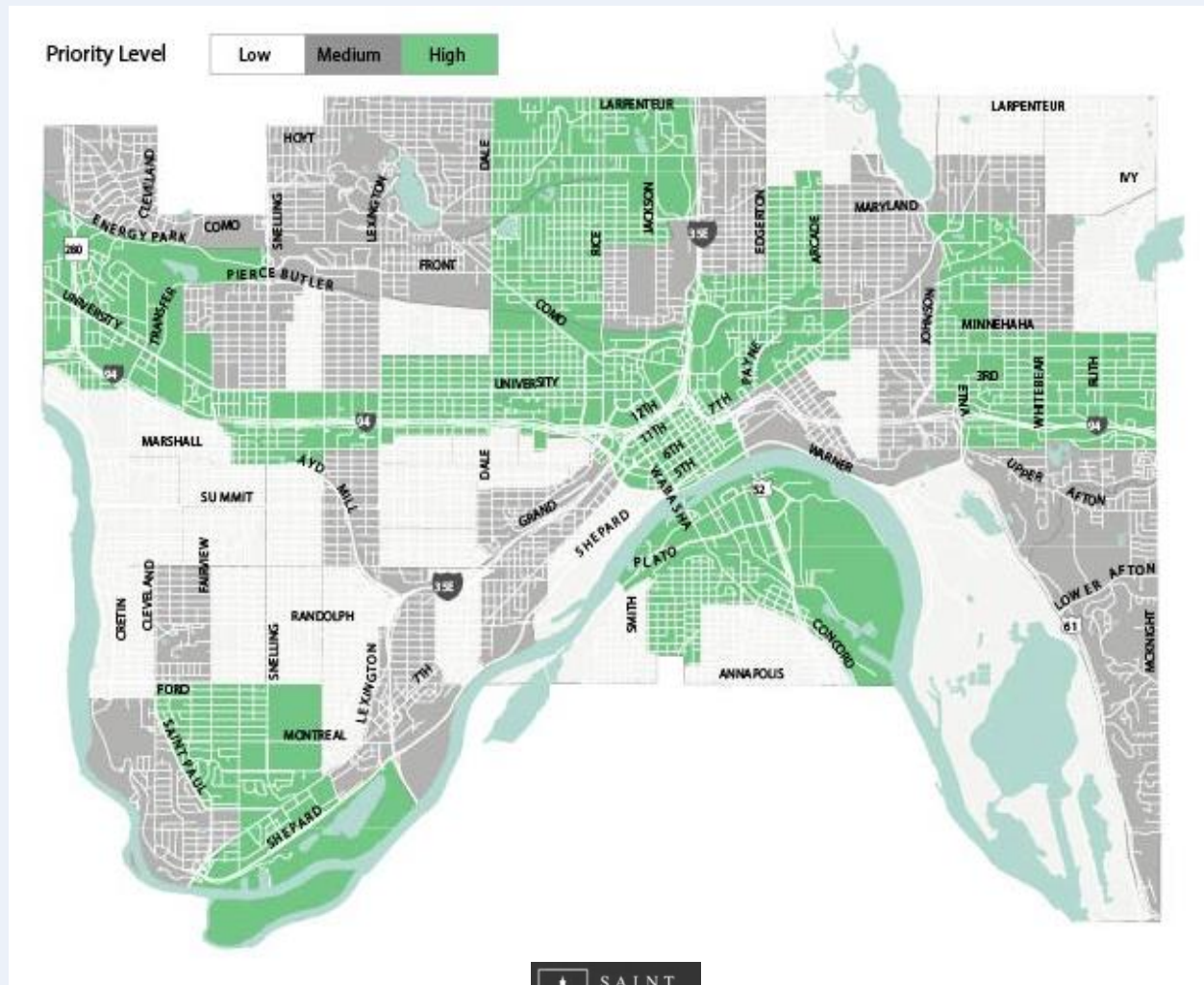


Neighborhoods whose residents
rely on walking the most

Neighborhoods whose residents rely on walking the most
Neighborhoods whose residents have the greatest health risks
Areas of the city that lack sidewalks
Areas where the most people live or work
Streets connecting children to schools
Streets connecting people to bus or light rail stops
Along and across busy streets (e.g. four-lane roads)
Streets connecting people to parks, libraries, universities, and places of ...
Streets connecting people to grocery stores, convenience stores, and ...
Streets connecting people to local businesses

Saint Paul Pedestrian Plan

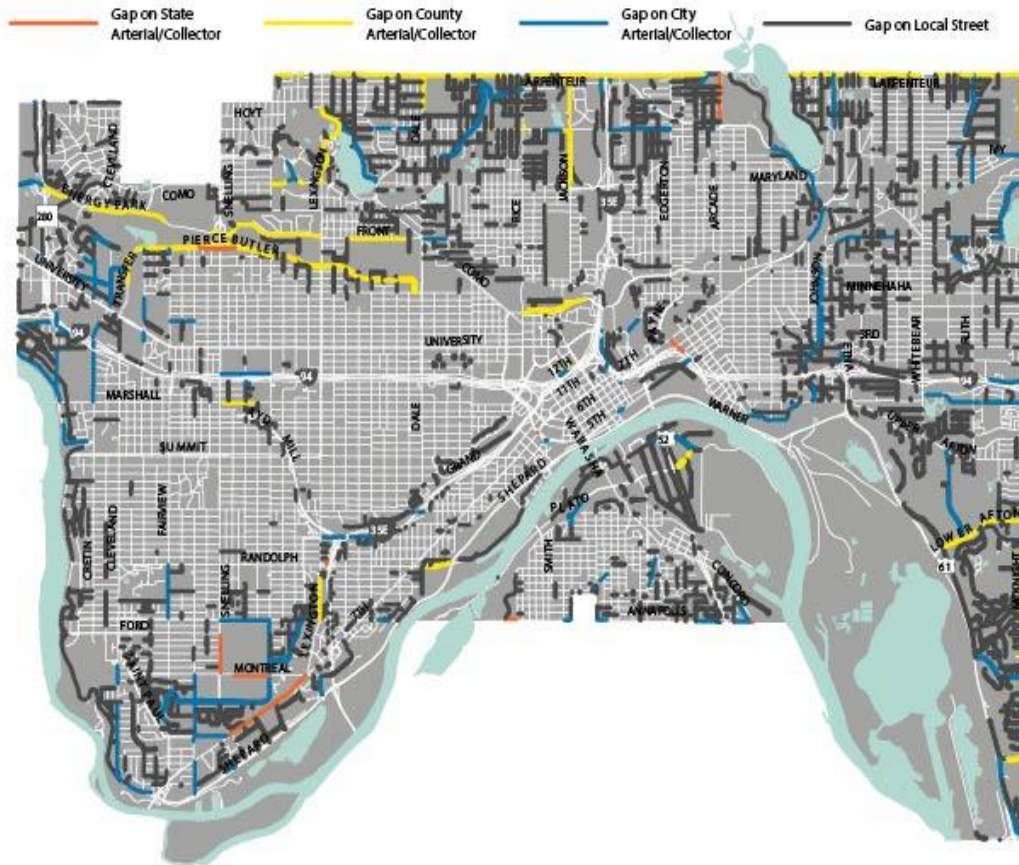
Priority Areas for Walking Investment



Saint Paul Pedestrian Plan

Adding Sidewalks to Streets Without Sidewalks

Sidewalk Gaps

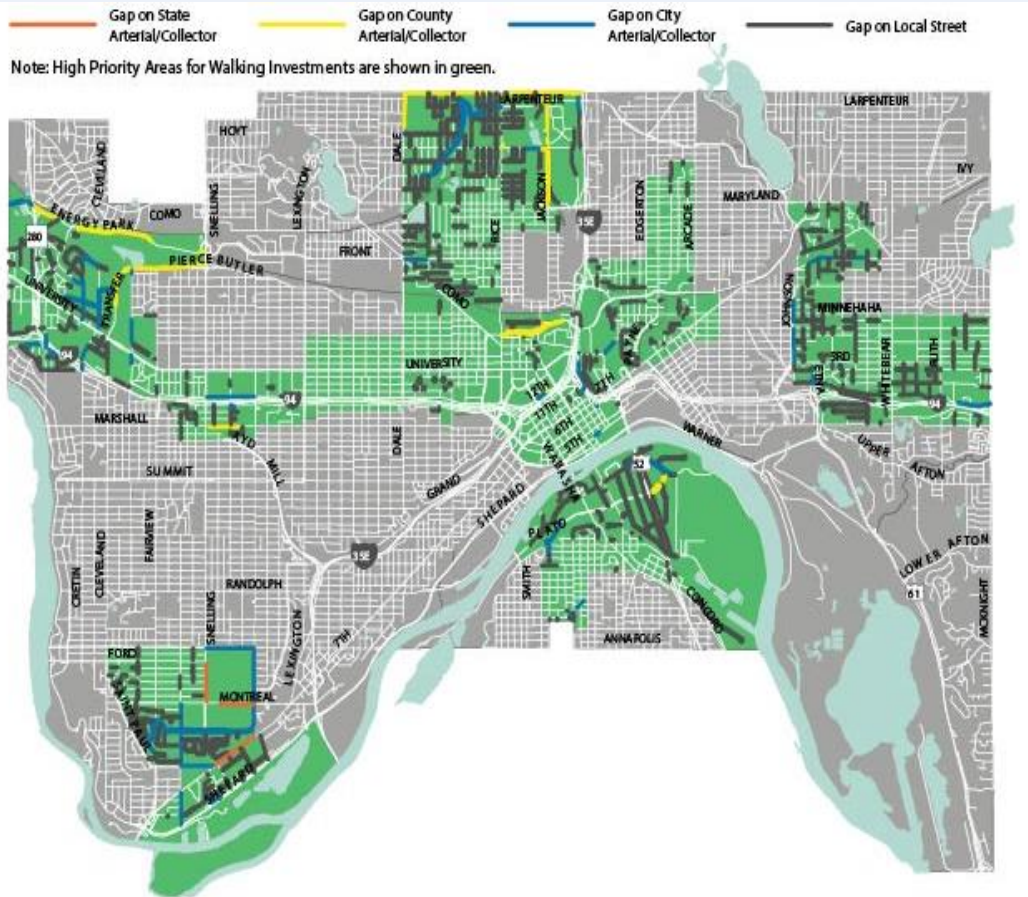


What We Know

- Approximately 330 miles of sidewalk gaps in Saint Paul. 62 miles are on busy roads.
- No dedicated funding source for construction; mixture of funding sources create uneven property owner assessments.
- Existing sidewalk network is 1,100 miles. We replace about 6 - 8 miles annually. Many sidewalks in poor condition.

Saint Paul Pedestrian Plan

Adding Sidewalks to Streets Without Sidewalks



What We're Doing

- Construct sidewalks on both sides of every street as part of street reconstruction projects in accordance with Saint Paul City Council Resolution 17-65.
- Require sidewalk on all sides of parcels undergoing site redevelopment.
- Use High Priority Areas for Walking Investments to select areas for grant funding opportunities, such as Safe Routes to School, Metropolitan Council Regional Solicitation and Ramsey County partnerships.

Saint Paul Pedestrian Plan

For More Information...

- Internet search “Saint Paul Pedestrian Plan”
- <https://www.stpaul.gov/departments/publicworks/transportation/walking-saint-paul>
- Contact Fay Simer
 - Fay.simer@ci.stpaul.mn.us or 651.266.6204



Safe Routes to School

What is it?

The Safe Routes to School program (SRTS) is an approach that promotes walking and bicycling to school through infrastructure improvements, enforcement, tools, safety education, and incentives to encourage walking and bicycling to school.



<https://www.transportation.gov/mission/health/Safe-Routes-to-School-Programs>



Safe Routes to School

Washington Technology Magnet School SRTS Plan 2017

- Developed by the community including 10-residents (parents), 3-students, an apartment property manager, Public Works staff, school staff, police staff, and others.
- Started in September 2016, report release in May 2017.
- Many recommendations ranging from education (pedestrian, bicycle, and driving safety), enforcement, engineering, and infrastructure.

<https://www.stpaul.gov/departments/public-works/walking-saint-paul/safe-routes-school>



Washington Tech Safe Routes to School

- This project is a direct outcome from the Washington Technology Magnet School Safe Routes to School Plan.
- Other projects/developments in the area include:
 - Wheelock Parkway Phase IV
 - Larpenteur Avenue sidewalk construction
 - The new Community School of Excellence
 - 224 Larpenteur Avenue townhomes
 - Resurfacing of Arlington Avenue from Rice Street to Jackson Street (including bike lanes)



Washington Tech Safe Routes to School

Included in the Project

- Sidewalk and ADA-compliant pedestrian ramps
- Crossing improvement at Hoyt/Matilda/Arlington
- Removal of Ash trees, dead trees, and stumps
- Count down timers at the intersections of Rice/Nebraska and Rice/Arlington
- Hydrant relocations as needed
- Sodded boulevards
- Tree plantings

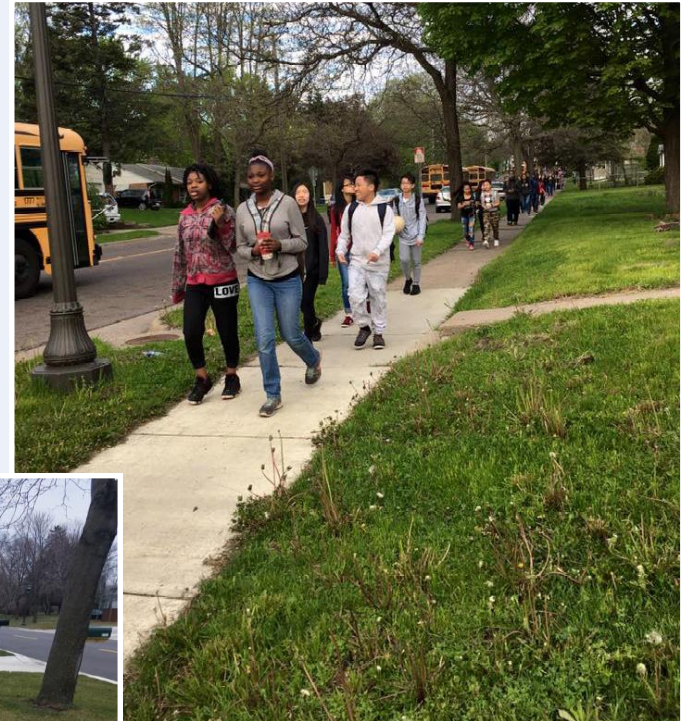


Washington Tech Safe Routes to School

Sidewalk

Sidewalk Installation

- 6-foot walk
- Typically set at property line
- Realignment (various locations)



Washington Tech Safe Routes to School

ADA-Compliant Pedestrian Ramps

Fan Ramp



Directional Ramp



Washington Tech Safe Routes to School

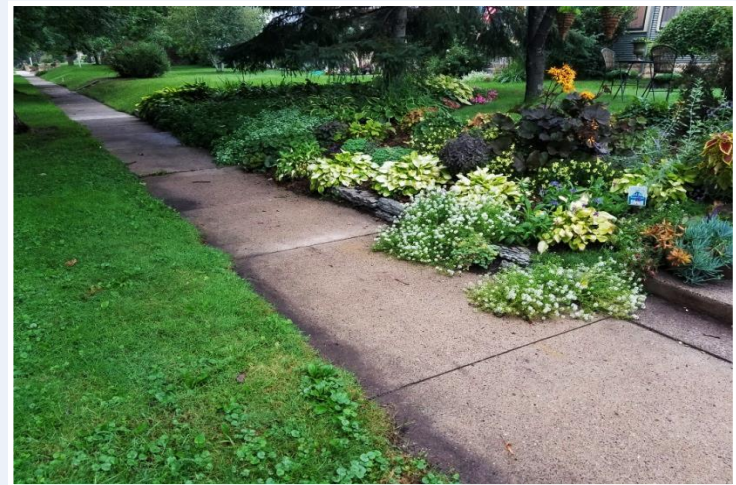
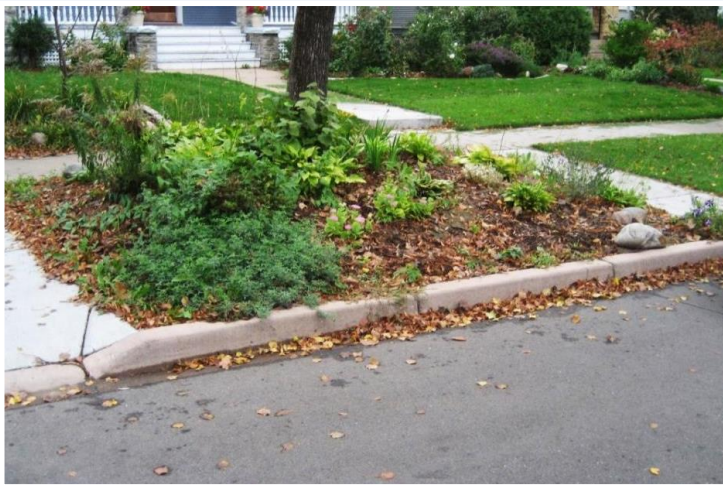
Grade and Sod Boulevards



Washington Tech Safe Routes to School

Boulevard Gardens

If you have a boulevard garden or plants
that you want to salvage,
remove the plants in the spring
before construction work begins



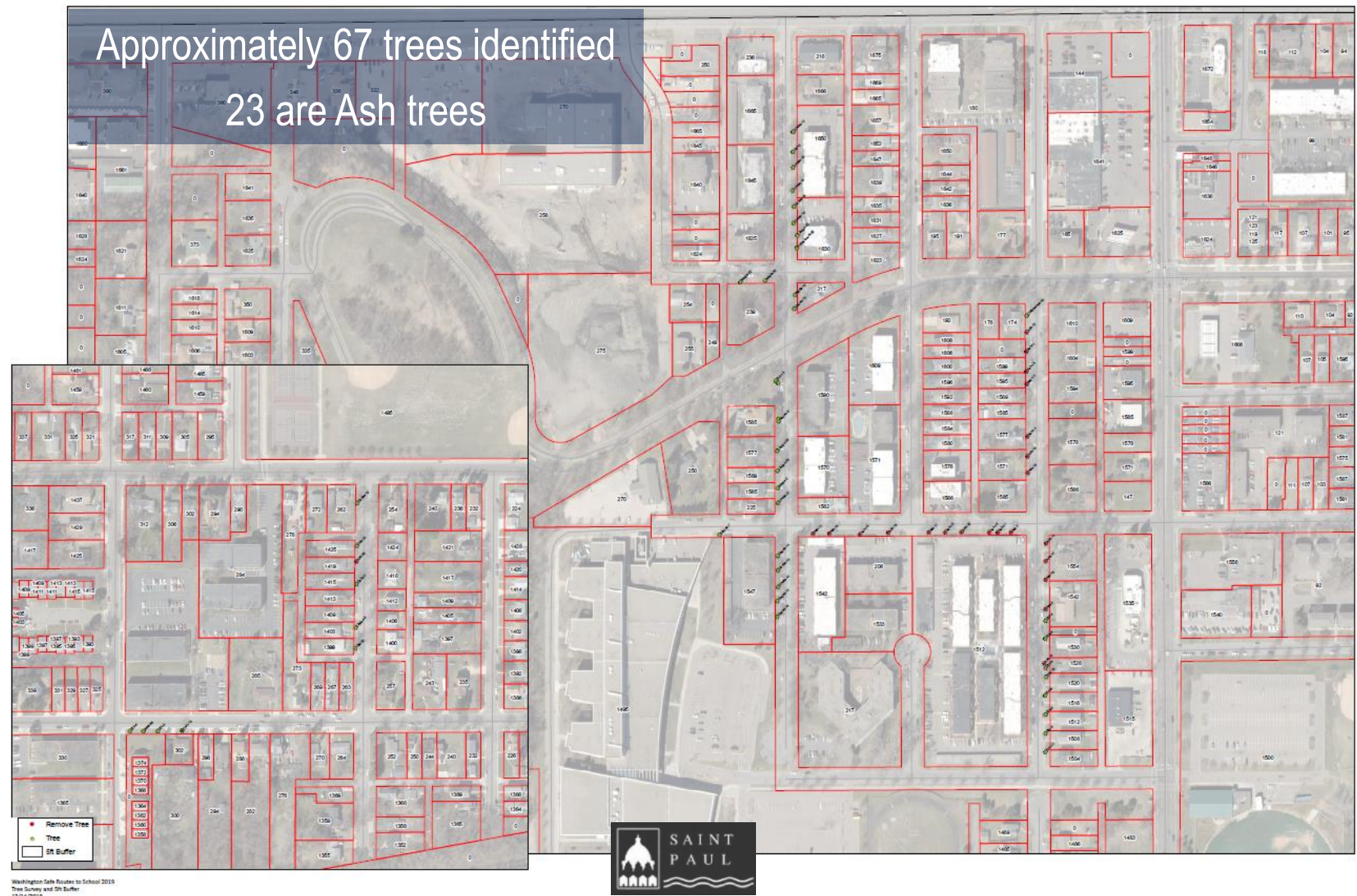
Washington Tech Safe Routes to School

Emerald Ash Borer



Washington Tech Safe Routes to School

Trees



Washington Tech Safe Routes to School

Tree Removal



Washington Tech Safe Routes to School

Tree Planting

Buckeye
Catalpa
Crabapple
Hackberry
Honeylocust
Hybrid Elm
Ironwood
Kentucky Coffee
London Plane
Oak
River Birch
Serviceberry



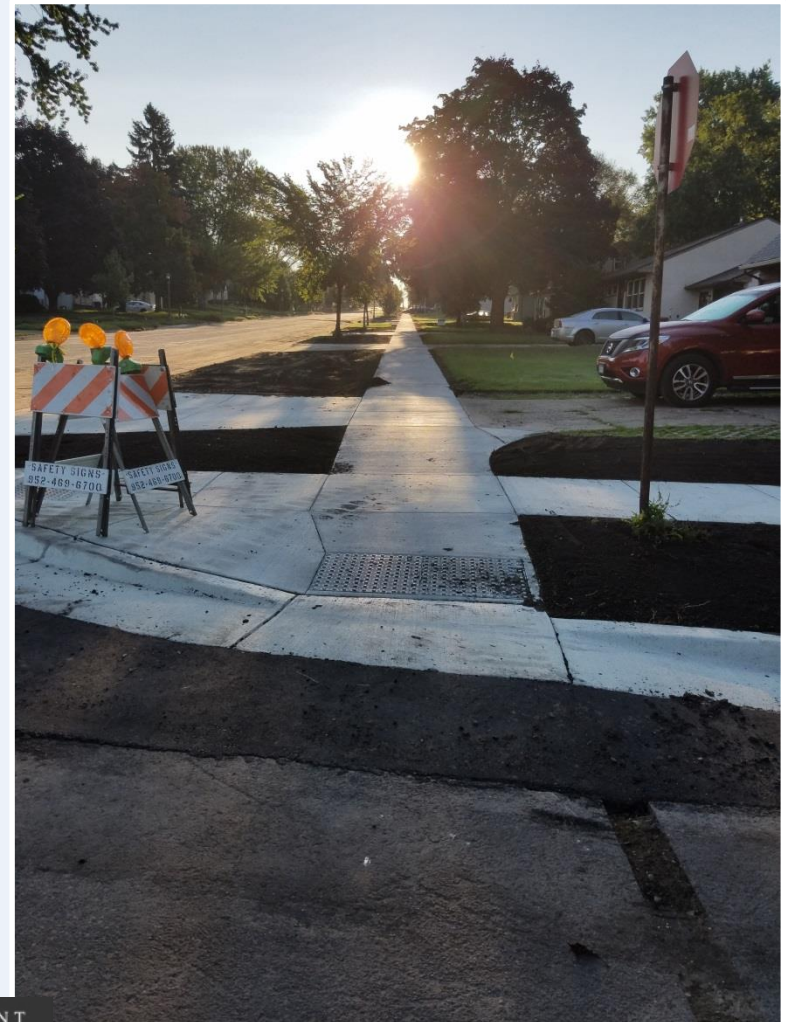
Washington Tech Safe Routes to School

Construction



Washington Tech Safe Routes to School

Sidewalk Construction



Washington Tech Safe Routes to School

Xcel Energy



SPRWS CONTACT INFO

► Graeme Chaple

Damage Prevention and Inspections Supervisor

Cell: 651.775.3030

Email: graeme.chaple@ci.stpaul.mn.us

► SPRWS Engineering Service Desk

651.266.6270

1900 Rice St

Saint Paul, MN 55113



Washington Tech Safe Routes to School

Living Through a Construction Project

Noise

Dust

Mud

Limited Access

Inconvenience



Washington Tech Safe Routes to School

Construction

- Your area will be dug up numerous different times
- The work is done in layers and often by different crews doing different types of work
- Plan on 1 to 2-months of disruption; will bridge 2019 and 2020
- Residents and emergency vehicle access will be maintained at all times

Washington Tech Safe Routes to School

Construction

- All of the construction is done by private construction companies
- They are very busy and this isn't their only project
- Most road work is weather-dependent and rain *will* delay work
- Contractors work 5-6 days a week from 7:00 a.m. until 7:00 p.m.
- The City of Saint Paul will have an onsite representative (project inspector) to inspect the contractor's work



Washington Tech Safe Routes to School

Roadway Construction Signs



ROAD CLOSED TO THRU TRAFFIC

You can get to your house, but you cannot get all the way through - you will eventually come to a **ROAD CLOSED** sign



ROAD CLOSED **DO NOT ENTER!**

Washington Tech Safe Routes to School

Parking

- The contractor will post **NO PARKING** signs everywhere
- If there *is no* activity on your block, you may park in front of your house
- If there *is* activity on your block, please leave contact information on the dashboard - the contractor would rather call you than a tow truck
- Police agree not to ticket unless requested by Public Works or the contractor



Washington Tech Safe Routes to School

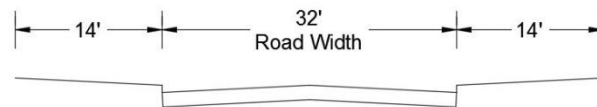
Project Information and Updates

- You will receive a letter prior to the start of construction - keep this for names and contact numbers
- A flyer will be handed out a week before construction starts on your block - check front doors for flyers
- Onsite Public Works inspector - the project inspector should be your **first call** with questions or issues
- Weekly updates will be posted to the city's website at **www.stpaul.gov/construction**



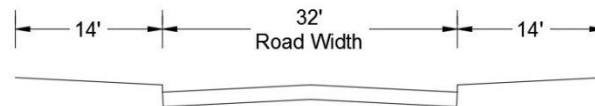
Washington Tech Safe Routes to School

Cottage Avenue and Farrington Street



Washington Tech Safe Routes to School

Galtier Street From Cottage Avenue to Arlington Avenue



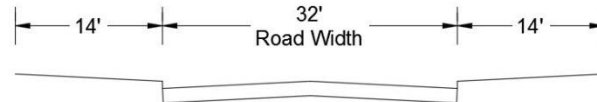
Washington Tech Safe Routes to School

Arlington Avenue and Matilda Street



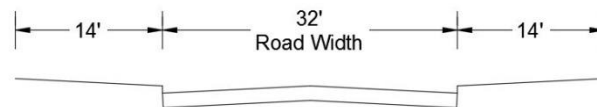
Washington Tech Safe Routes to School

Idaho Avenue From Galtier Street to Marion Street



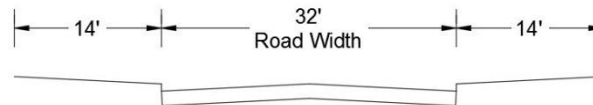
Washington Tech Safe Routes to School

Marion Street From Wheelock Parkway to Larpenteur Avenue



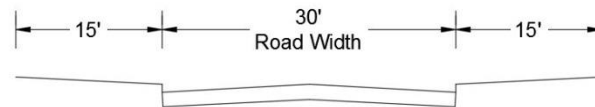
Washington Tech Safe Routes to School

Marion Street From Cul-de-sac to Wheelock Parkway



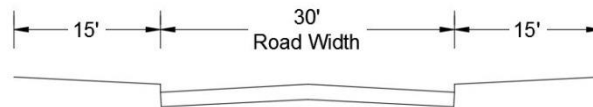
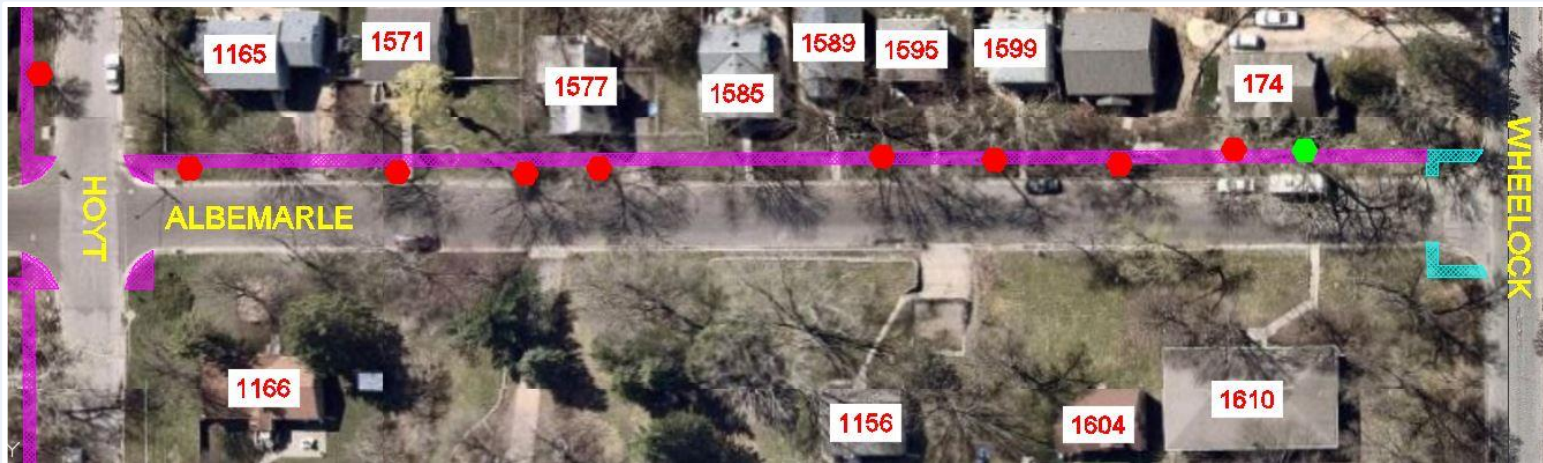
Washington Tech Safe Routes to School

Albemarle Street from Wheelock Parkway to Larpenteur Avenue



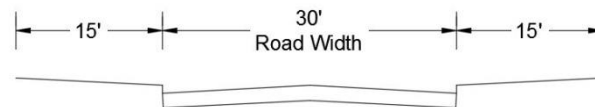
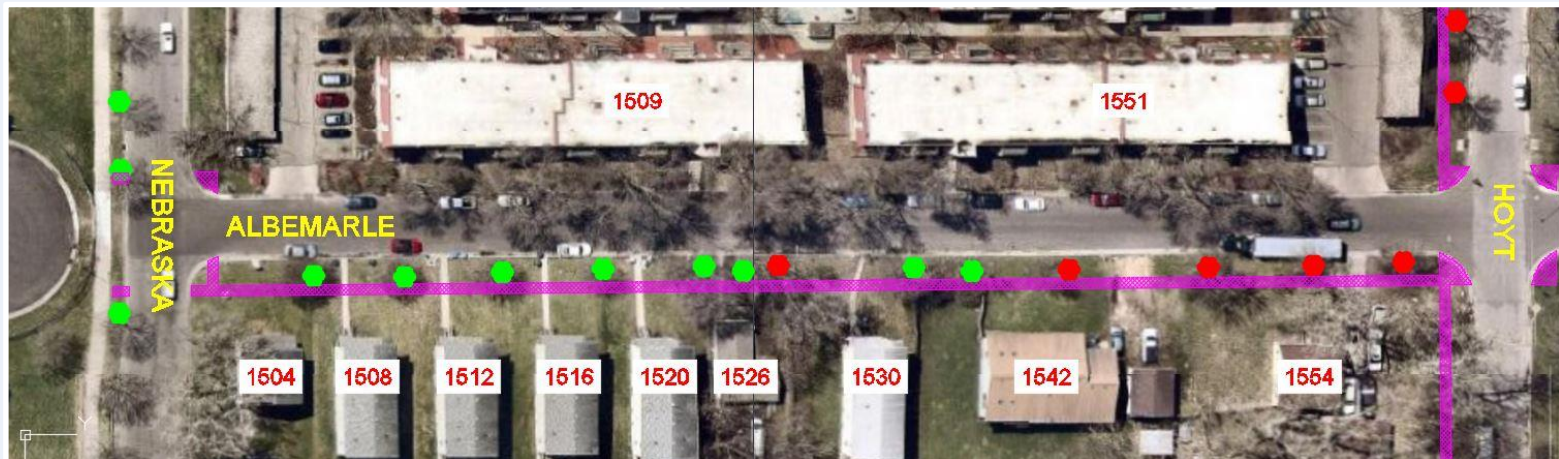
Washington Tech Safe Routes to School

Albemarle Street from Hoyt Avenue to Wheelock Parkway



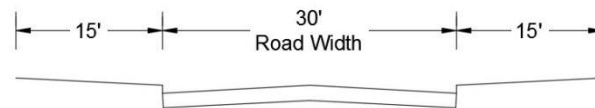
Washington Tech Safe Routes to School

Albemarle Street from Nebraska Avenue to Hoyt Avenue



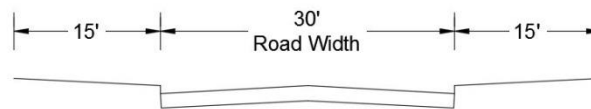
Washington Tech Safe Routes to School

Hoyt Avenue From Marion Street to Woodbridge Street



Washington Tech Safe Routes to School

Hoyt Avenue From Woodbridge Street to Rice Street



Washington Tech Safe Routes to School

Nebraska Avenue From Marion Street to Rice Street



Questions?



Washington Tech Safe Routes to School

Contacts

Project Manager	Chris Engelmann	651-266-6084
-----------------	-----------------	--------------

Project Engineer	Cheng Xiong	651-266-6168
------------------	-------------	--------------

Forestry	Zach Jorgensen	651-632-2437
----------	----------------	--------------

