

An aerial photograph of Saint Paul, Minnesota, showing a dense urban skyline with various skyscrapers and buildings. The city is situated along a river, which is visible in the foreground. The image has a greenish tint and a semi-transparent dark overlay in the center where the text is located.

CITY OF SAINT PAUL

Public Works

Division of

Street Design and Construction

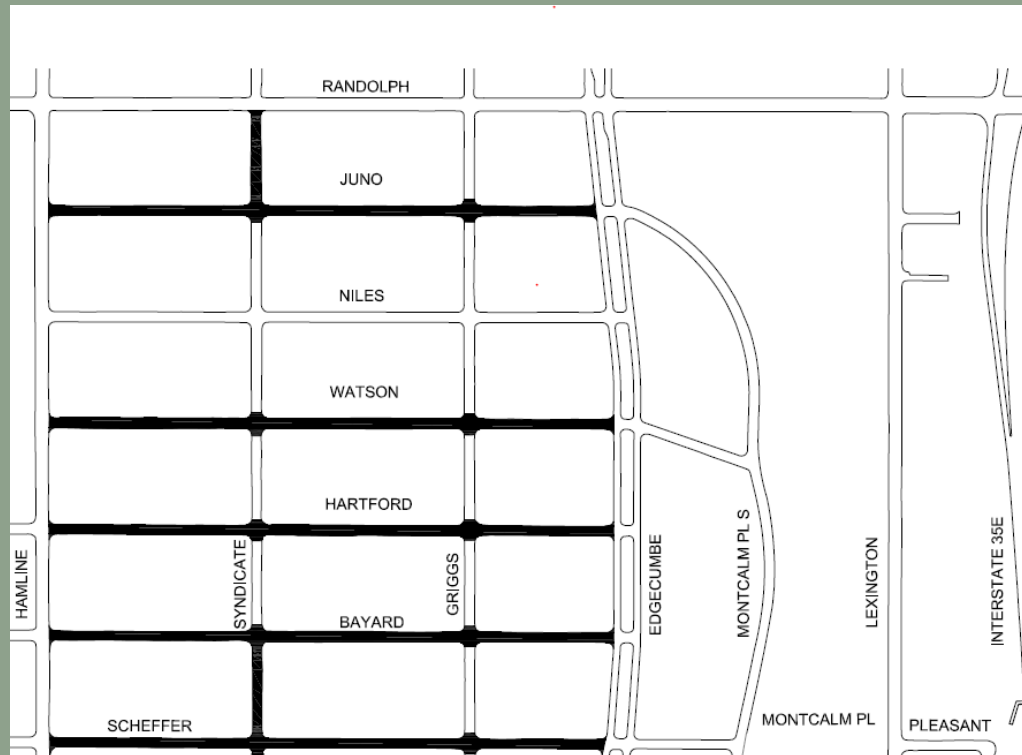


Griggs – Scheffer Paving Project Phase I



GRIGGS-SCHEFFER

Project Map



www.stpaul.gov/construction



Street Design and Construction

GRIGGS-SCHEFFER

Presenters

Project Manager	Chris Engelman chris.engelman@stpaul.gov	651-266-6084
Project Engineer	Cheng Xiong cheng.xiong@stpaul.gov	651-266-6168



GRIGGS-SCHEFFER

Project Schedule

- This 1st meeting is informational — we are reaching out to you early in our design phase for your help in identifying potential conflicts/coordination issues
- A 2nd public meeting will be held to review construction-related information — meeting time and location are TBD
- City Council approval/Public Hearing in early 2020
- Design winter of 2019/2020
- Start construction summer of 2020
- Planned end of major construction fall of 2020



GRIGGS-SCHEFFER

What is the Project Improving?

- New concrete curb and gutter
- New pavement (width 32-feet)
- Concrete driveway aprons
- Sidewalk and ADA-compliant pedestrian ramps
- Utility upgrades
- Lantern-style street lighting
- Urban forest planting — removal of all Ash trees, dead trees, and stumps
- Sodded boulevards



GRIGGS-SCHEFFER

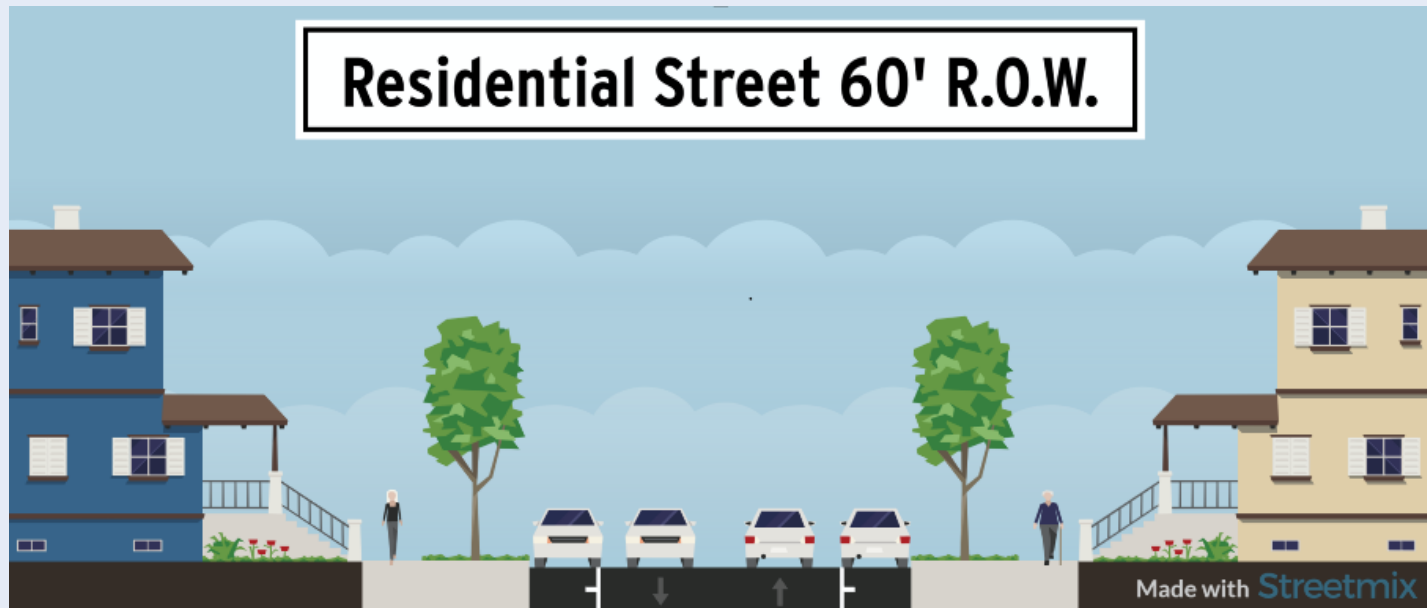
Before and After



Street Design and Construction

GRIGGS-SCHEFFER

Typical Residential Section



GRIGGS-SCHEFFER

Concrete Curb and Gutter with Catch Basins

Before



After



GRIGGS-SCHEFFER

Bituminous Pavement

Before



After



GRIGGS-SCHEFFER

Sidewalk Replacement



Sidewalk Replacement and Infill

- 5-foot walk
- Field inspection to identify panels to be replaced
- Typically set at property line
- Infill in areas of road reconstruction



GRIGGS-SCHEFFER

ADA-Compliant Pedestrian Ramps

Fan Ramp



Directional Ramp



GRIGGS-SCHEFFER

Driveways



Driveway aprons will be concrete regardless of any existing special material

New driveway aprons will be reconstructed at 12-foot max, 30-feet beyond the garage



GRIGGS-SCHEFFER

Grade and Sod Boulevards



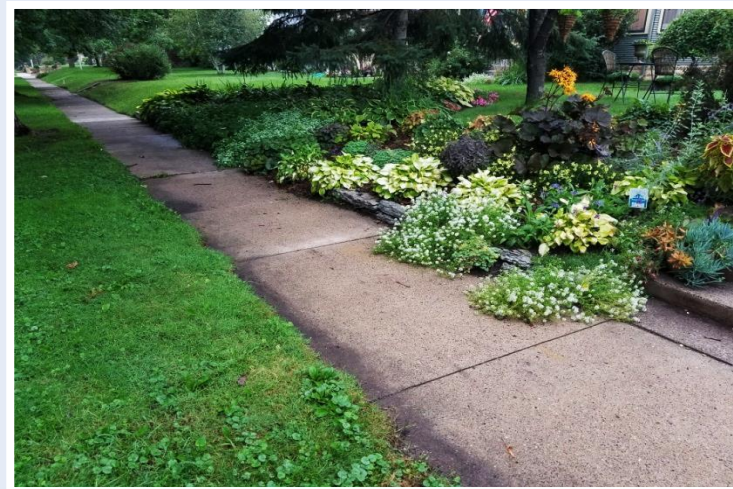
Street Design and Construction

GRIGGS-SCHEFFER

Boulevard Gardens

If you have a boulevard garden or plants you want to salvage:

- Coordinate with project to identify areas you do not want sod placed
- Plan to remove plants in the spring ***before construction work begins***



GRIGGS-SCHEFFER

Lantern-style Street Lighting

Before



After



GRIGGS-SCHEFFER

Tree Planting



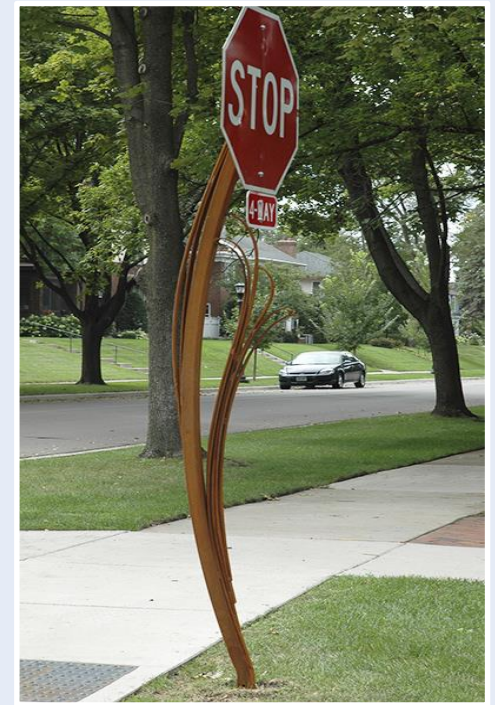
Buckeye
Catalpa
Crabapple
Hackberry
Honeylocust
Hybrid Elm
Ironwood
Kentucky Coffee
London Plane
Oak
River Birch
Serviceberry



GRIGGS-SCHEFFER

Public Art

The City of Saint Paul dedicates 1% of the project cost to public art





SAINT PAUL REGIONAL WATER SERVICES

SPRWS Engineering Service Desk

651.266.6270

1900 Rice Street

Saint Paul, MN 55113

<https://www.stpaul.gov/departments/water-services/lead-household-water>

LEAD SERVICE REPLACEMENT

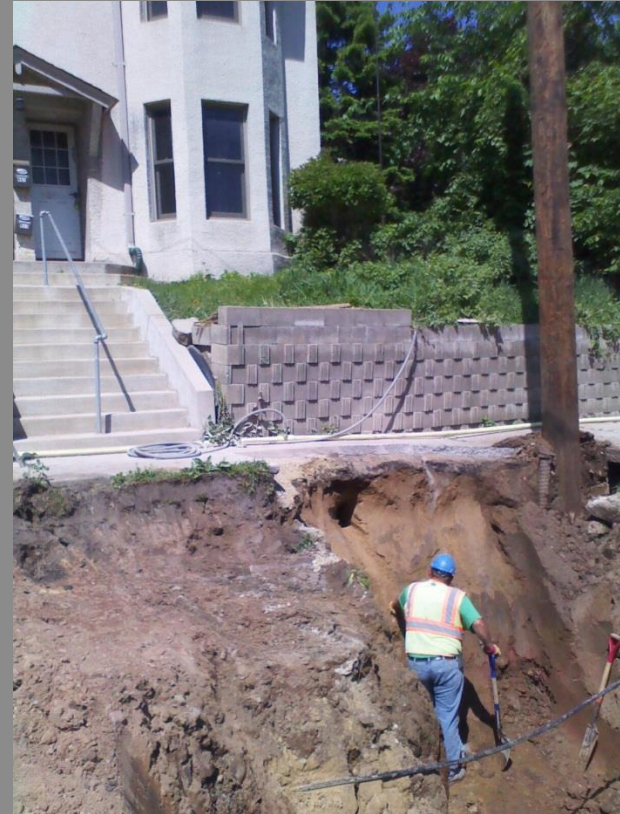


- ▶ All Lead water services will be replaced from the water main to the property line or water service stop box
- ▶ Replacements to stop box are only done if there is an obstruction at the property line or if a private plumber has already replaced the water service inside property to the stop box



LEAD SERVICE REPLACEMENT INSIDE PROPERTY

- ▶ Can be assessed onto taxes over 20-years
- ▶ Building owner will have to obtain private plumber and get quotes
- ▶ Excavation of yard generally not needed
- ▶ Costs are reduced because restoration is done in the ROW by the project
- ▶ Plumber list and information will be mailed to property owner addresses
- ▶ Additional information available from the SPRVS Engineering Service Desk 651.266.6270



CITY OF SAINT PAUL

Public Works

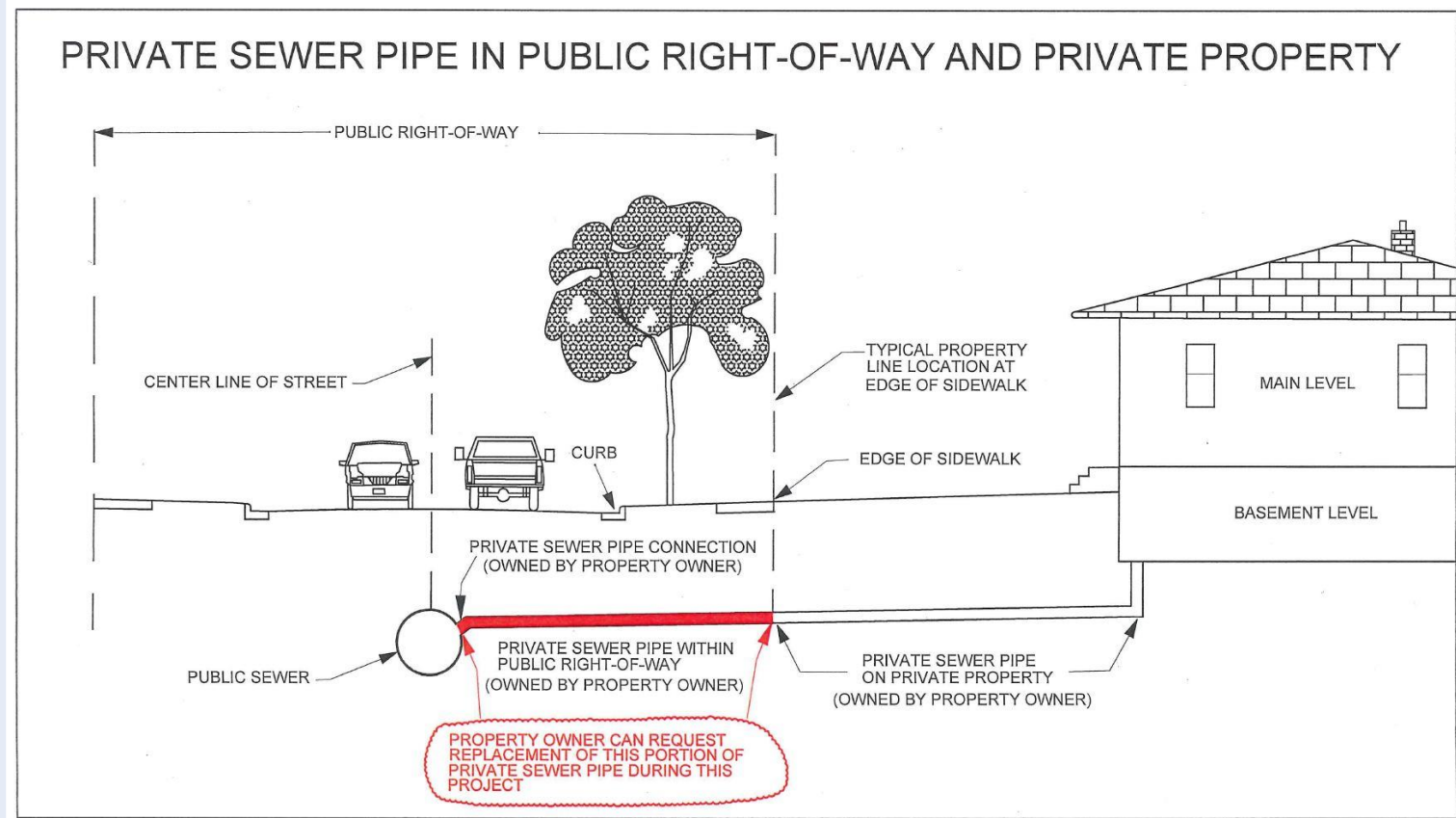
Sewer Division

Design Desk 651-266-6234

<https://www.stpaul.gov/departments/public-works/sewer-utility-division/property-owner-information>

GRIGGS-SCHEFFER

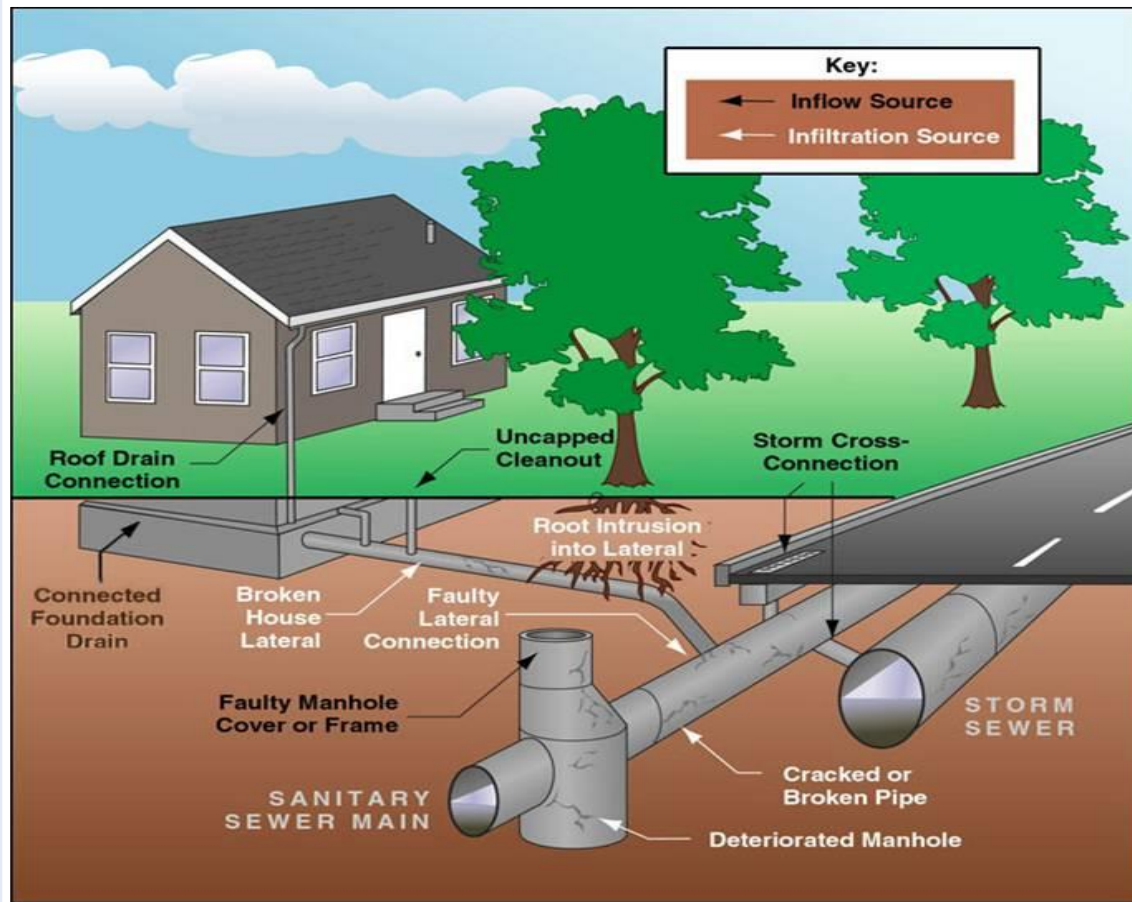
Sanitary Sewer Replacement Option



Sewer Division

GRIGGS-SCHEFFER

Sanitary Sewer Service Issues



Sewer Division

GRIGGS-SCHEFFER

Warning Signs of a Defective Sewer Service

- Does your drain run slowly or gurgle?
- Do you have sewer odors?
- Do you know where your sewer service runs?
- Are there bushes or trees planted over it?
- Has your sewer line ever been cleaned and inspected?
- Do you have a garbage disposal and do you use it for everything?
- Is there a sinkhole or depression near your home, boulevard, or street?



GRIGGS-SCHEFFER

Saint Paul Streets Program

Determining the Assessment

- Rates are not determined at this time
- Additional information will be available later this fall



GRIGGS-SCHEFFER

Assessment Schedule

Assessment Process/Approval

- Construction approved early 2020 (Final Order)
- Assessment approved fall of 2020 (Ratification of Assessment)

Pending Assessment

- Assessment is “pending” after the Final Order is approved
 - Visible for property owners or title companies
 - Payments are accepted (partial or full)

Levied Assessment

- Assessment is “levied” after the Ratification of Assessment is approved
 - Invoice mailed, 30-days to pay to avoid interest
 - If not fully paid, annual installments automatically go onto property taxes
 - Paid over 20-years with simple interest and a flat fee
- Delayed payment of Special Assessment for Senior Citizens or Permanently Disabled
 - Not a forgiveness of the assessment
 - Interest accrues the same as non-deferred



Questions?



GRIGGS-SCHEFFER

Contacts

Project Manager	Chris Engelmann	651-266-6084
Project Engineer	Cheng Xiong	651-266-6168
Public Works Street Lighting	Ben Hawkins	651-266-6256
Parks and Recreation	Forestry Unit	651-632-5129
SPRWS (Water)	Service Desk	651-266-6270
Public Works Sewers	Design Desk	651-266-6234
Real Estate Section - Assessments	General Line	651-266-8851

