
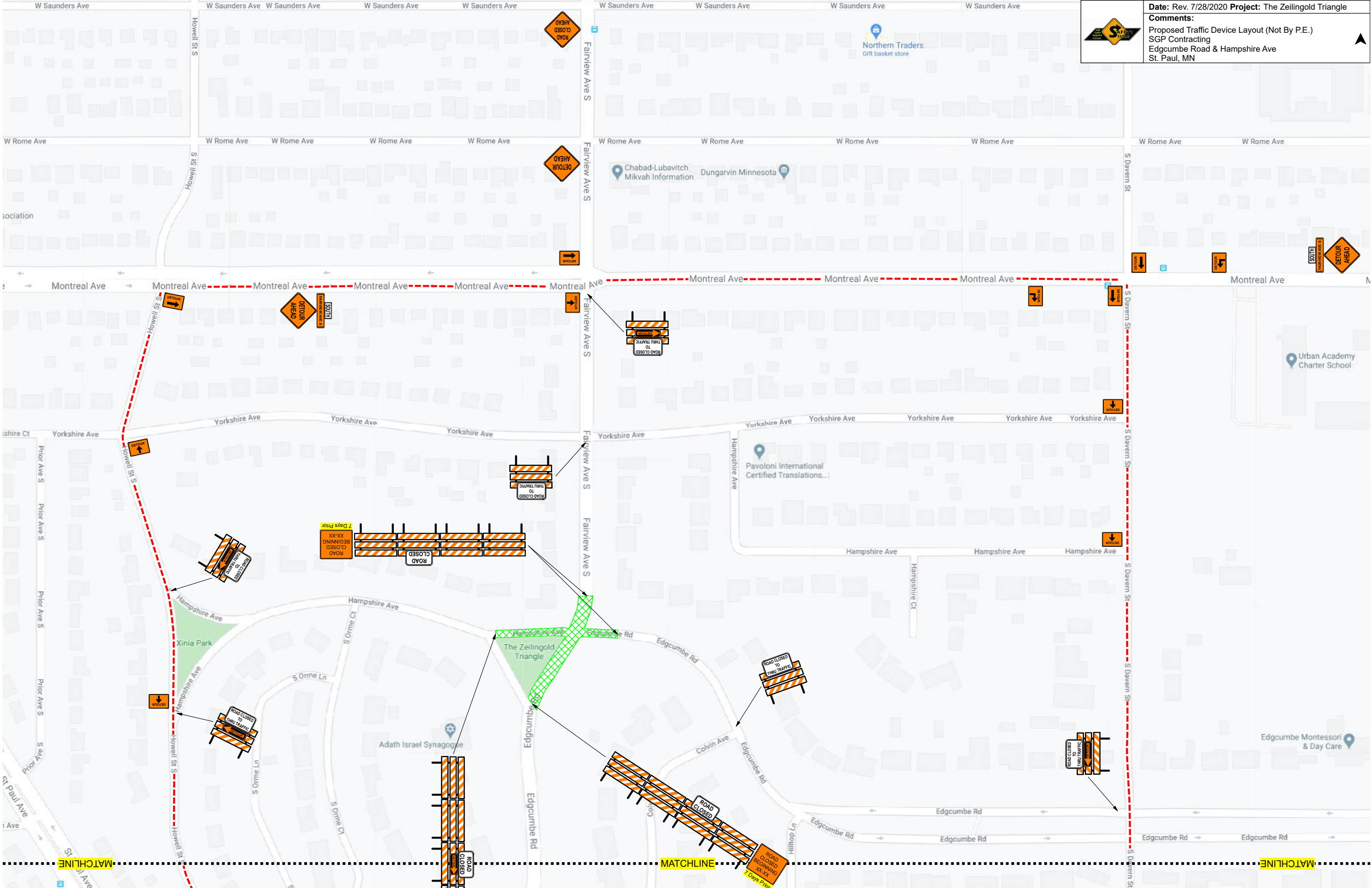
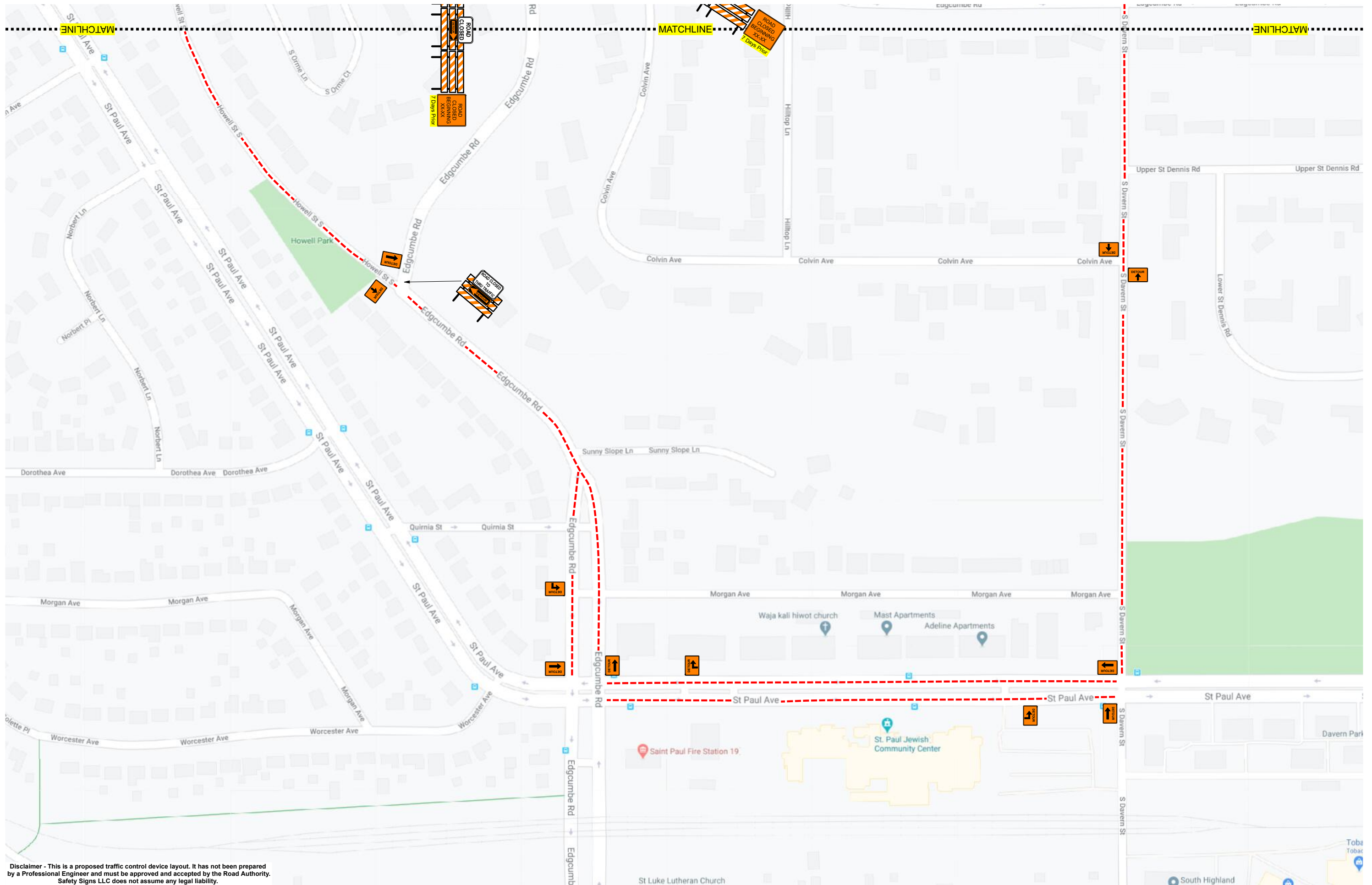


Date: Rev. 7/28/2020 **Project:** The Zeilngold Triangle

Comments:
 Proposed Traffic Device Layout (Not By P.E.)
 SGP Contracting
 Edgumbe Road & Hampshire Ave
 St. Paul, MN



Disclaimer - This is a proposed traffic control device layout. It has not been prepared by a Professional Engineer and must be approved and accepted by the Road Authority. Safety Signs LLC does not assume any legal liability.