

These plans are preliminary.

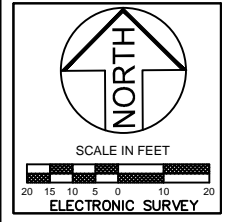
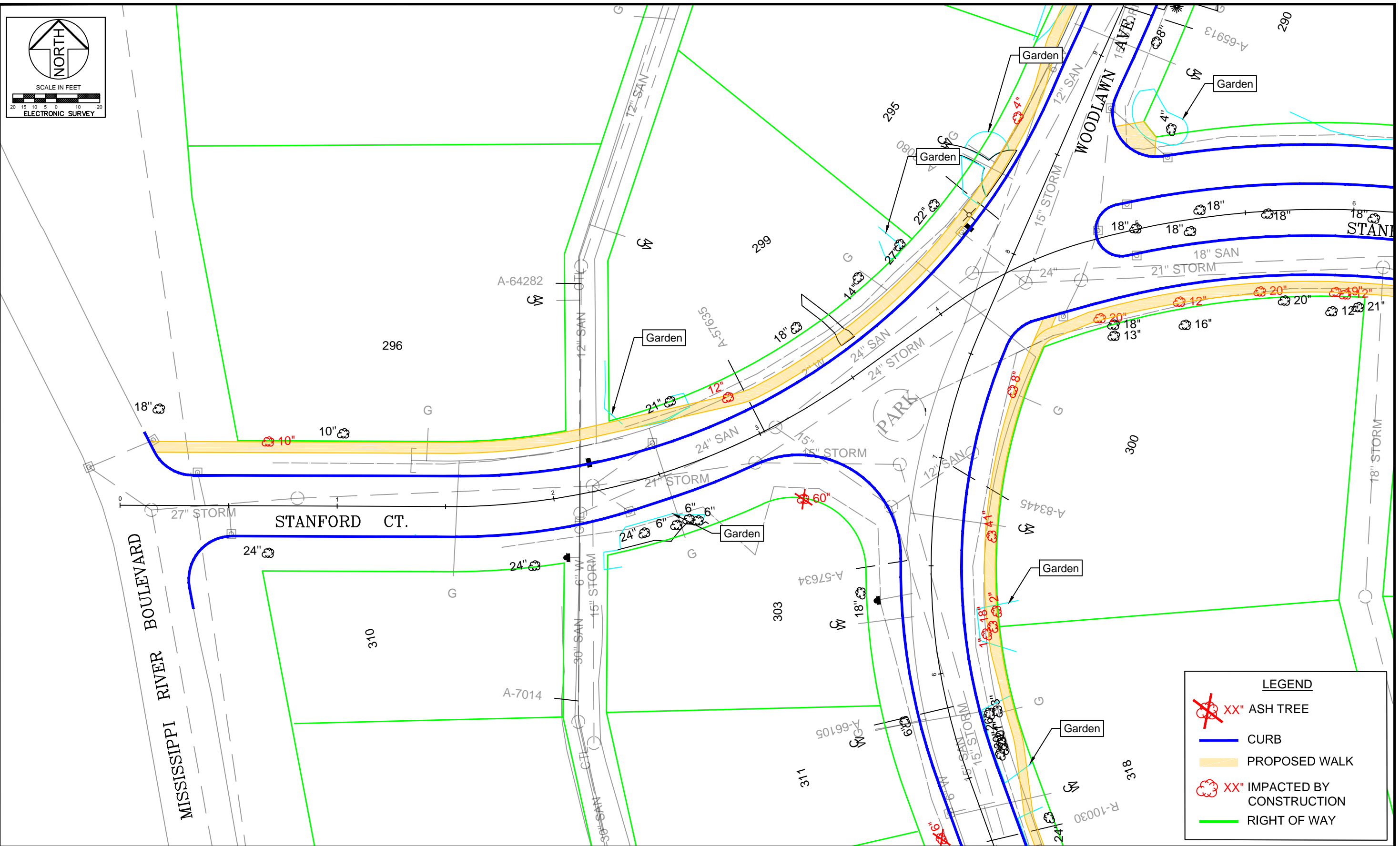
In general, proposed sidewalk location, i.e. side of street, will not change. However, sidewalks may meander to protect trees, minimize grading issues or to improve drainage.

Tree removal is subject to change based on pending construction information for watermain replacement, requests for sanitary sewer service repair, utility work or unknown subsurface conditions.

The subsurface utility information in this plan is utility quality level "D". This utility level was determined according to the guidelines of CI/ASCE 38.02, entitled "standard guideline for the collection and depiction of existing subsurface utility data".



C:\Users\omerahm.STPAUL\appdata\local\temp\AcPublish_8596\WJ BASE-Exhibit.dwg Dec 12, 2018 - 1:13pm



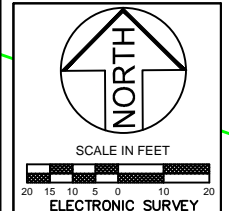
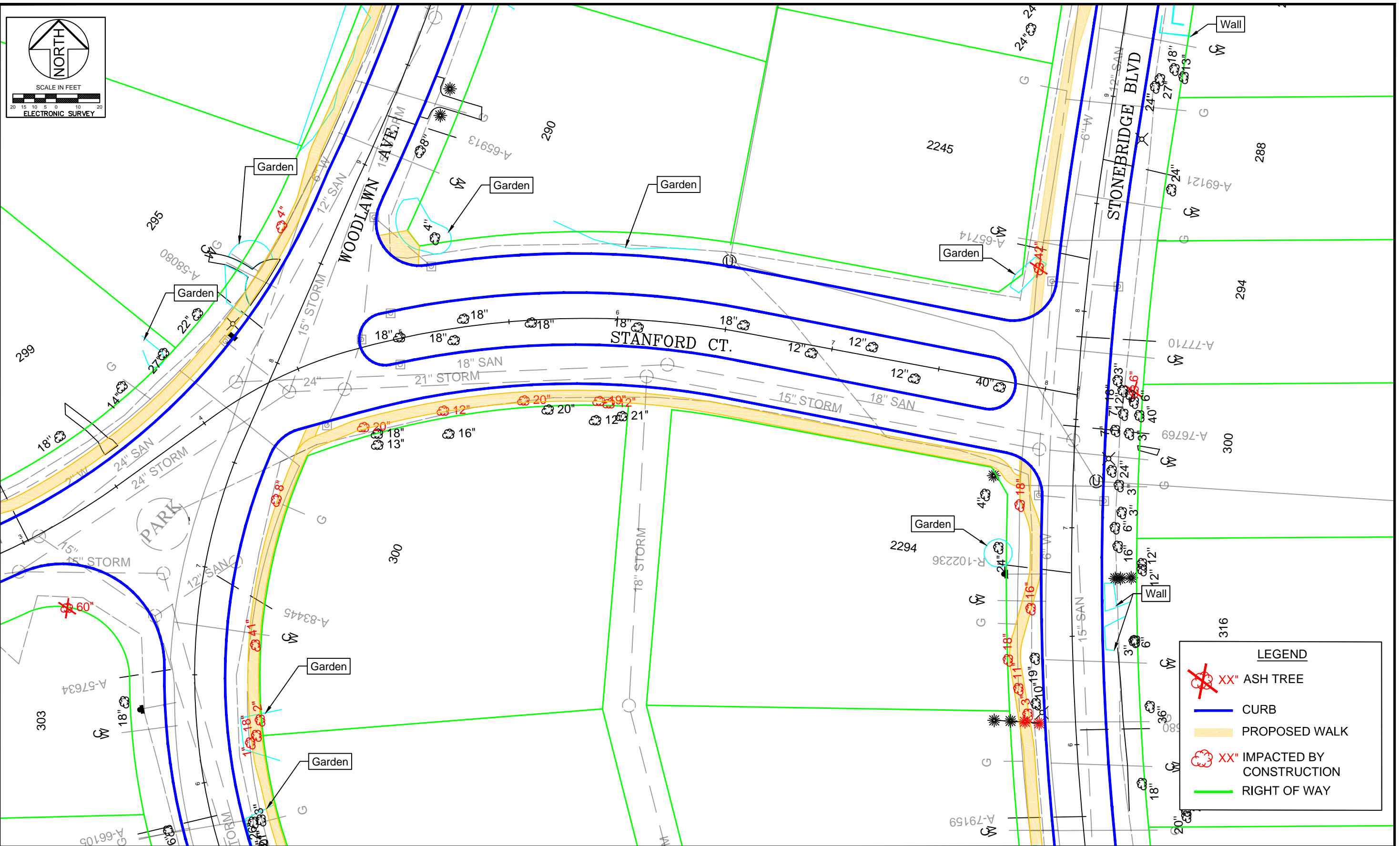
LEGEND	
	XX" ASH TREE
	CURB
	PROPOSED WALK
	XX" IMPACTED BY CONSTRUCTION
	RIGHT OF WAY

PREPARED BY STREET ENGINEERING DIVISION FOR THE CITY OF ST. PAUL, DEPARTMENT OF PUBLIC WORKS
WOODLAWN/JEFFERSON PHASE II
PRELIMINARY DRAFT SUBJECT TO CHANGE WITHOUT NOTICE.

SECTION 1
 SHEET NO. 01 OF 14



C:\Users\omerahm.STPAUL\appdata\local\temp\AcPublish_8596\WJ BASE-Exhibit.dwg Dec 12, 2018 - 1:13pm



LEGEND	
	ASH TREE
	CURB
	PROPOSED WALK
	IMPACTED BY CONSTRUCTION
	RIGHT OF WAY

PREPARED BY STREET ENGINEERING DIVISION FOR THE CITY OF ST. PAUL, DEPARTMENT OF PUBLIC WORKS

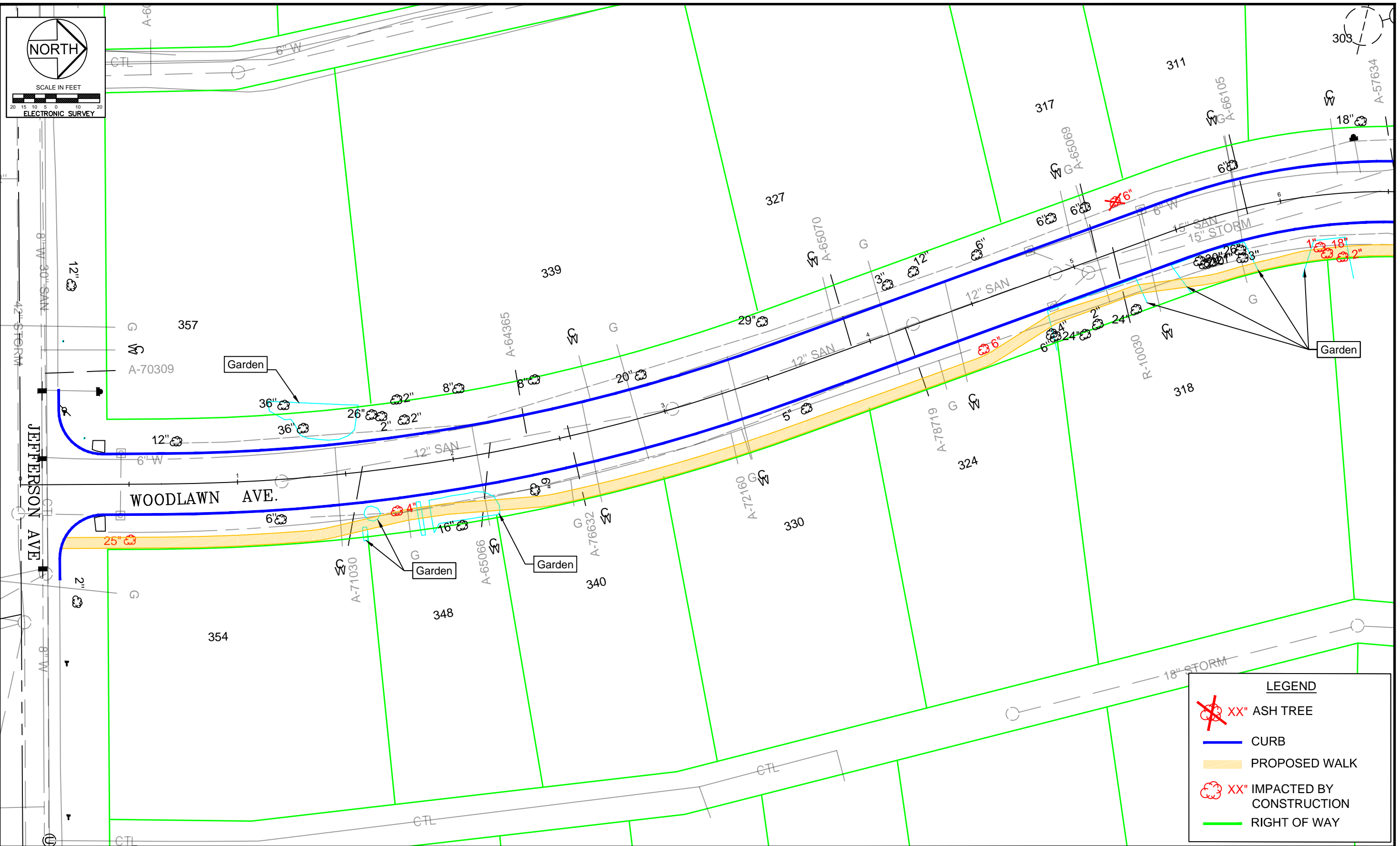
WOODLAWN/JEFFERSON PHASE II
PRELIMINARY DRAFT SUBJECT TO CHANGE WITHOUT NOTICE.

SECTION 2

SHEET NO. 02 OF 14



C:\Users\omerahm.STPAUL\appdata\local\temp\AcPublish_8596\WJ BASE-Exhibit.dwg Dec 12, 2018 - 1:13pm



LEGEND	
	XX" ASH TREE
	CURB
	PROPOSED WALK
	XX" IMPACTED BY CONSTRUCTION
	RIGHT OF WAY

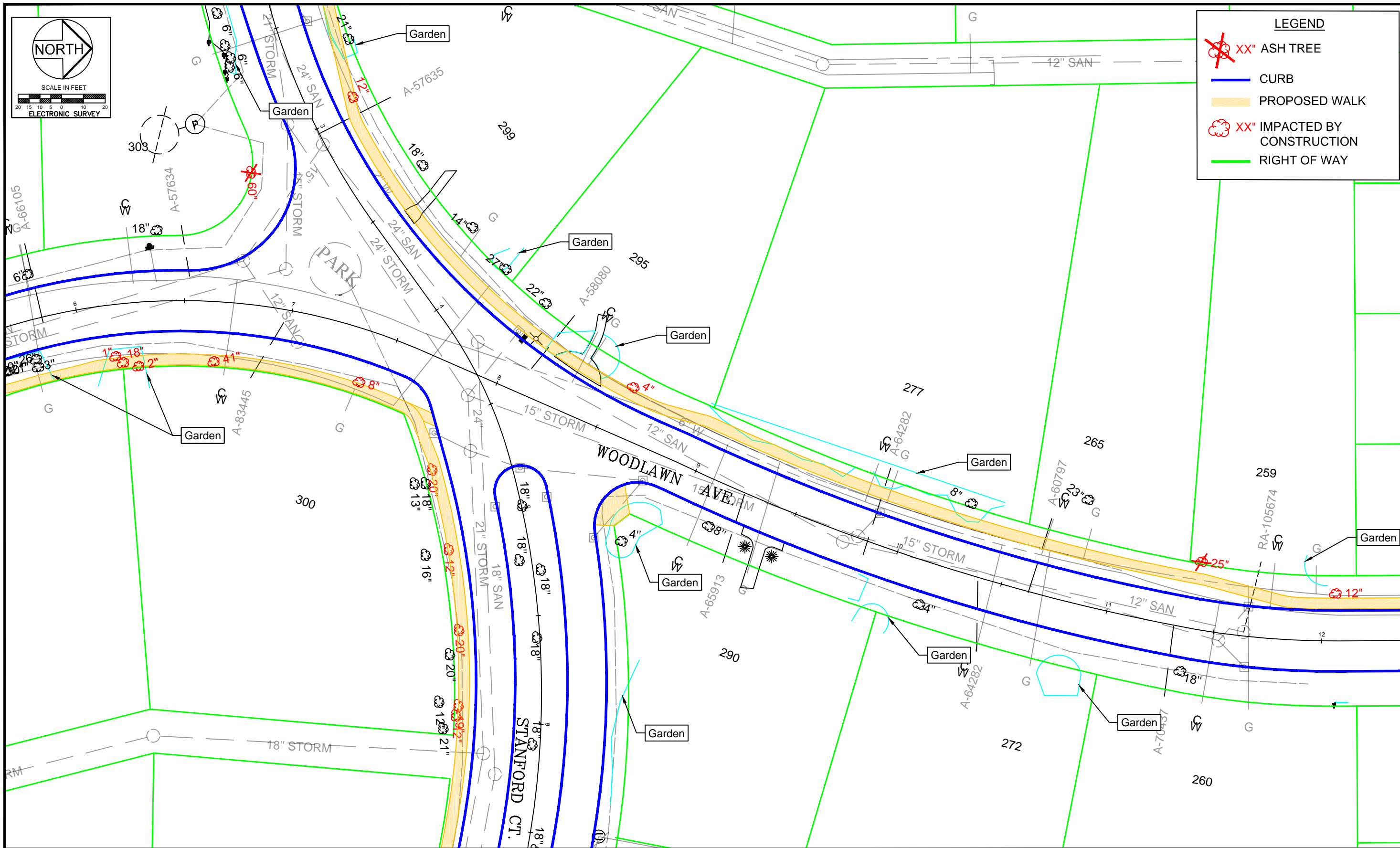
PREPARED BY STREET ENGINEERING DIVISION FOR THE CITY OF ST. PAUL, DEPARTMENT OF PUBLIC WORKS
WOODLAWN/JEFFERSON PHASE II
PRELIMINARY DRAFT SUBJECT TO CHANGE WITHOUT NOTICE.

SECTION 3

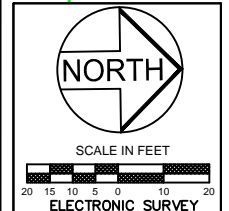
SHEET NO. 03 OF 14



C:\Users\omerahm.STPAUL\appdata\local\temp\AcPublish_8596\WJ BASE-Exhibit.dwg Dec 12, 2018 - 1:13pm



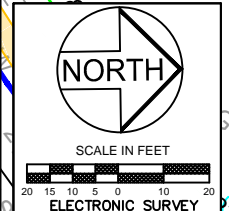
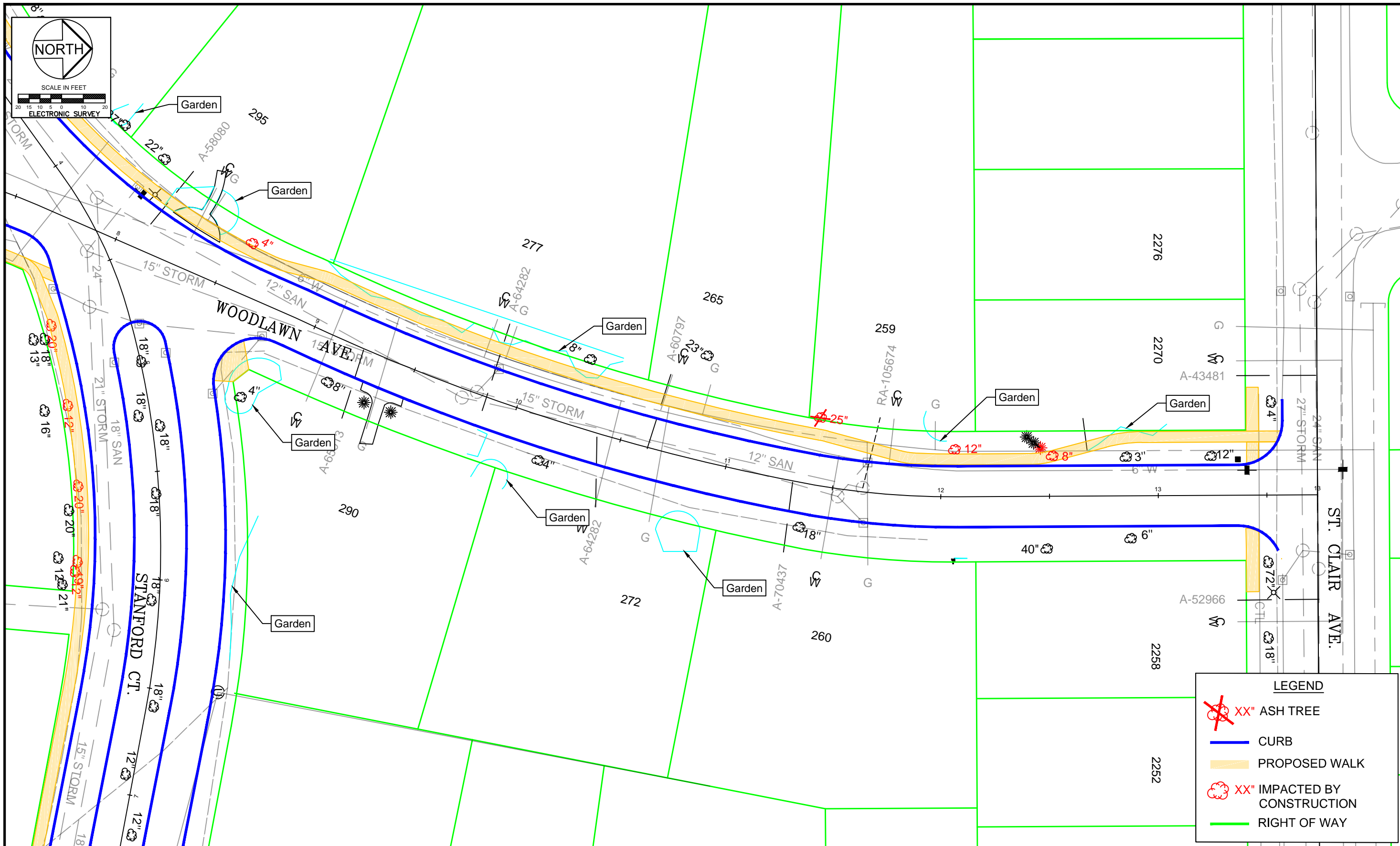
LEGEND	
	XX" ASH TREE
	CURB
	PROPOSED WALK
	XX" IMPACTED BY CONSTRUCTION
	RIGHT OF WAY



PREPARED BY STREET ENGINEERING DIVISION FOR THE CITY OF ST. PAUL, DEPARTMENT OF PUBLIC WORKS
WOODLAWN/JEFFERSON PHASE II
PRELIMINARY DRAFT SUBJECT TO CHANGE WITHOUT NOTICE.

SECTION 1
 SHEET NO. 04 OF 14

C:\Users\omerahm.STPAUL\appdata\local\temp\AcPublish_8596\WJ BASE-Exhibit.dwg Dec 12, 2018 - 1:13pm



LEGEND

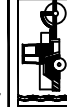
- XX" ASH TREE
- CURB
- PROPOSED WALK
- XX" IMPACTED BY CONSTRUCTION
- RIGHT OF WAY

PREPARED BY STREET ENGINEERING DIVISION FOR THE CITY OF ST. PAUL, DEPARTMENT OF PUBLIC WORKS

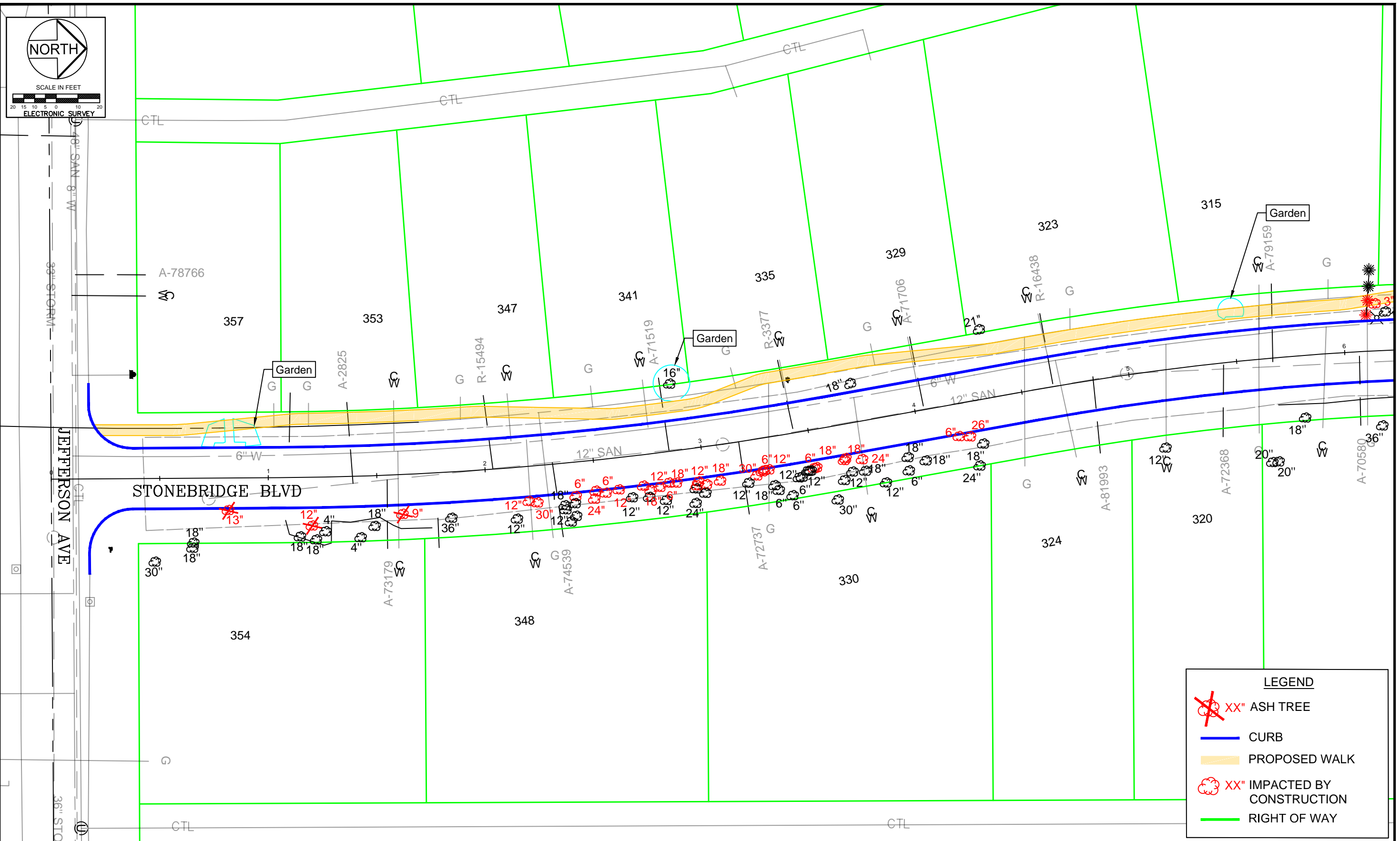
WOODLAWN/JEFFERSON PHASE II
PRELIMINARY DRAFT SUBJECT TO CHANGE WITHOUT NOTICE.

SECTION 1

SHEET NO. 05 OF 14



C:\Users\omerahm.STPAUL\appdata\local\temp\AcPublish_8596\WJ BASE-Exhibit.dwg Dec 12, 2018 - 1:13pm



LEGEND

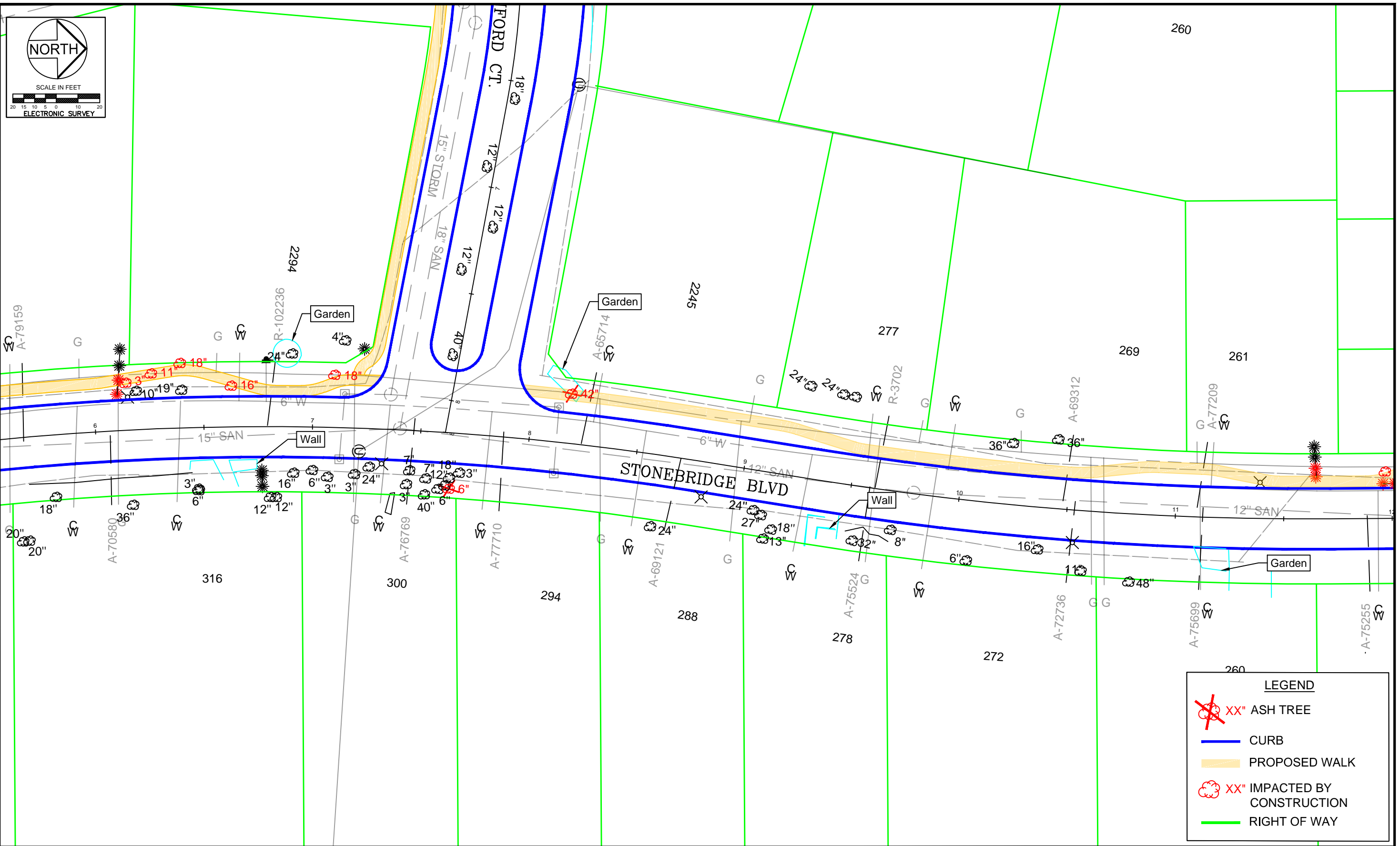
- XX" ASH TREE
- CURB
- PROPOSED WALK
- XX" IMPACTED BY CONSTRUCTION
- RIGHT OF WAY

PREPARED BY STREET ENGINEERING DIVISION FOR THE CITY OF ST. PAUL, DEPARTMENT OF PUBLIC WORKS
WOODLAWN/JEFFERSON PHASE II
PRELIMINARY DRAFT SUBJECT TO CHANGE WITHOUT NOTICE.

SECTION 4
 SHEET NO. 06 OF 14



C:\Users\omerahm.STPAUL\appdata\local\temp\AcPublish_8596\WJ BASE-Exhibit.dwg Dec 12, 2018 - 1:13pm



LEGEND

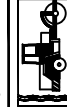
- XX" ASH TREE
- CURB
- PROPOSED WALK
- XX" IMPACTED BY CONSTRUCTION
- RIGHT OF WAY

PREPARED BY STREET ENGINEERING DIVISION FOR THE CITY OF ST. PAUL, DEPARTMENT OF PUBLIC WORKS

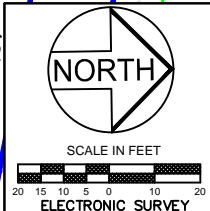
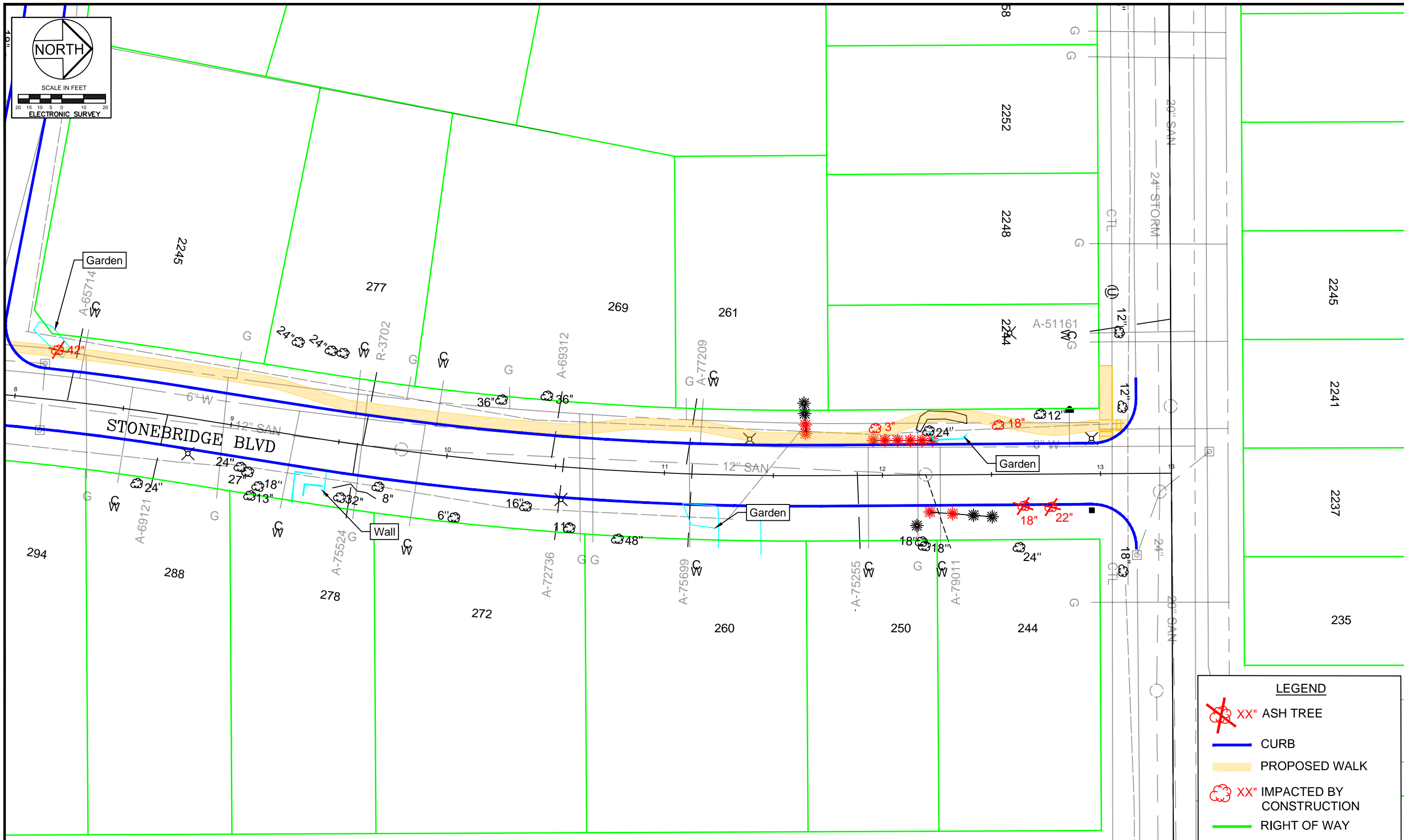
WOODLAWN/JEFFERSON PHASE II
PRELIMINARY DRAFT SUBJECT TO CHANGE WITHOUT NOTICE.

SECTION 4






SHEET NO. 07 OF 14



C:\Users\omerahm.STPAUL\appdata\local\temp\AcPublish_8596\WJ BASE-Exhibit.dwg Dec 12, 2018 - 1:13pm



LEGEND

-  XX" ASH TREE
-  CURB
-  PROPOSED WALK
-  XX" IMPACTED BY CONSTRUCTION
-  RIGHT OF WAY

PREPARED BY STREET ENGINEERING DIVISION FOR THE CITY OF ST. PAUL, DEPARTMENT OF PUBLIC WORKS

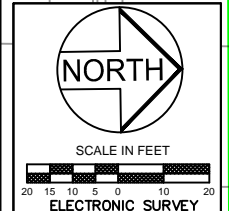
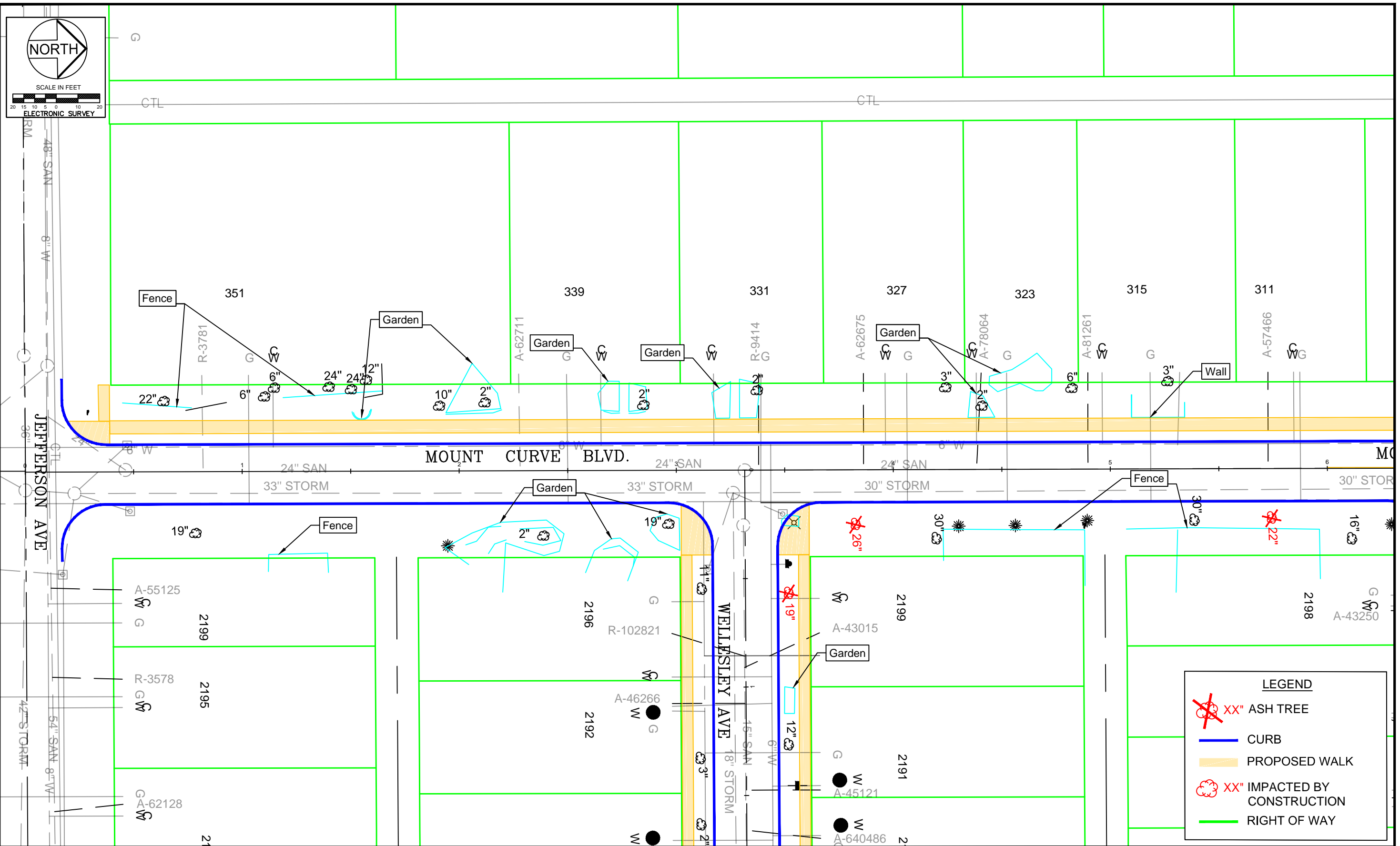
WOODLAWN/JEFFERSON PHASE II
PRELIMINARY DRAFT SUBJECT TO CHANGE WITHOUT NOTICE.

SECTION 4

SHEET NO. 08 OF 14



C:\Users\omerahm.STPAUL\appdata\local\temp\AcPublish_8596\WJ BASE-Exhibit.dwg Dec 12, 2018 - 1:13pm

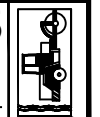


PREPARED BY STREET ENGINEERING DIVISION FOR THE CITY OF ST. PAUL, DEPARTMENT OF PUBLIC WORKS

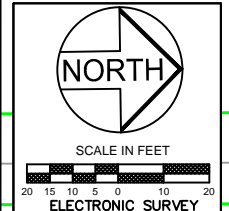
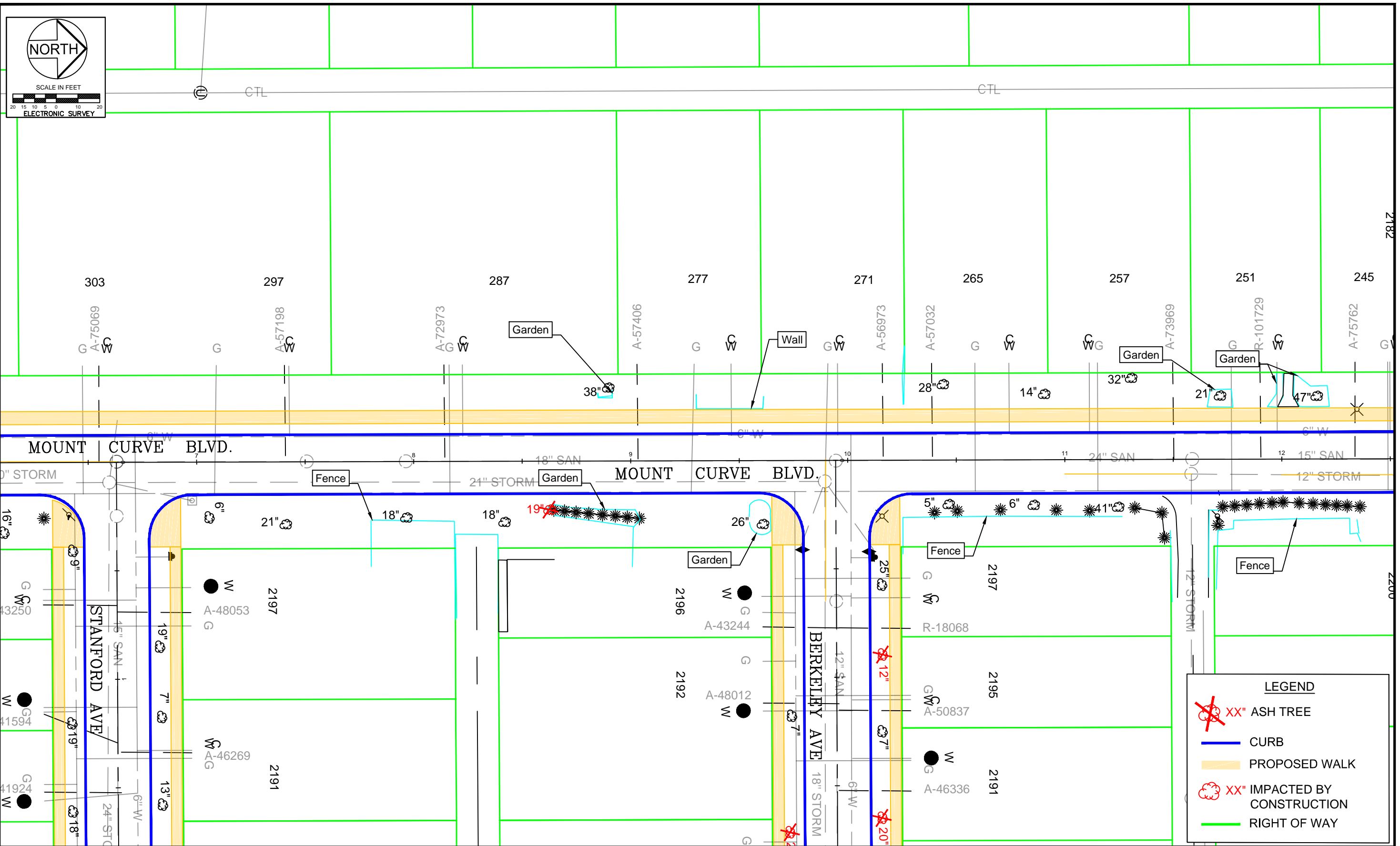
WOODLAWN/JEFFERSON PHASE II
PRELIMINARY DRAFT SUBJECT TO CHANGE WITHOUT NOTICE.

LEGEND	
	XX" ASH TREE
	CURB
	PROPOSED WALK
	XX" IMPACTED BY CONSTRUCTION
	RIGHT OF WAY

SECTION 5



C:\Users\omerahm.STPAUL\appdata\local\temp\AcPublish_8596\WJ BASE-Exhibit.dwg Dec 12, 2018 - 1:13pm



LEGEND

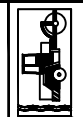
- XX" ASH TREE
- CURB
- PROPOSED WALK
- XX" IMPACTED BY CONSTRUCTION
- RIGHT OF WAY

PREPARED BY STREET ENGINEERING DIVISION FOR THE CITY OF ST. PAUL, DEPARTMENT OF PUBLIC WORKS

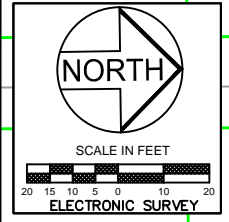
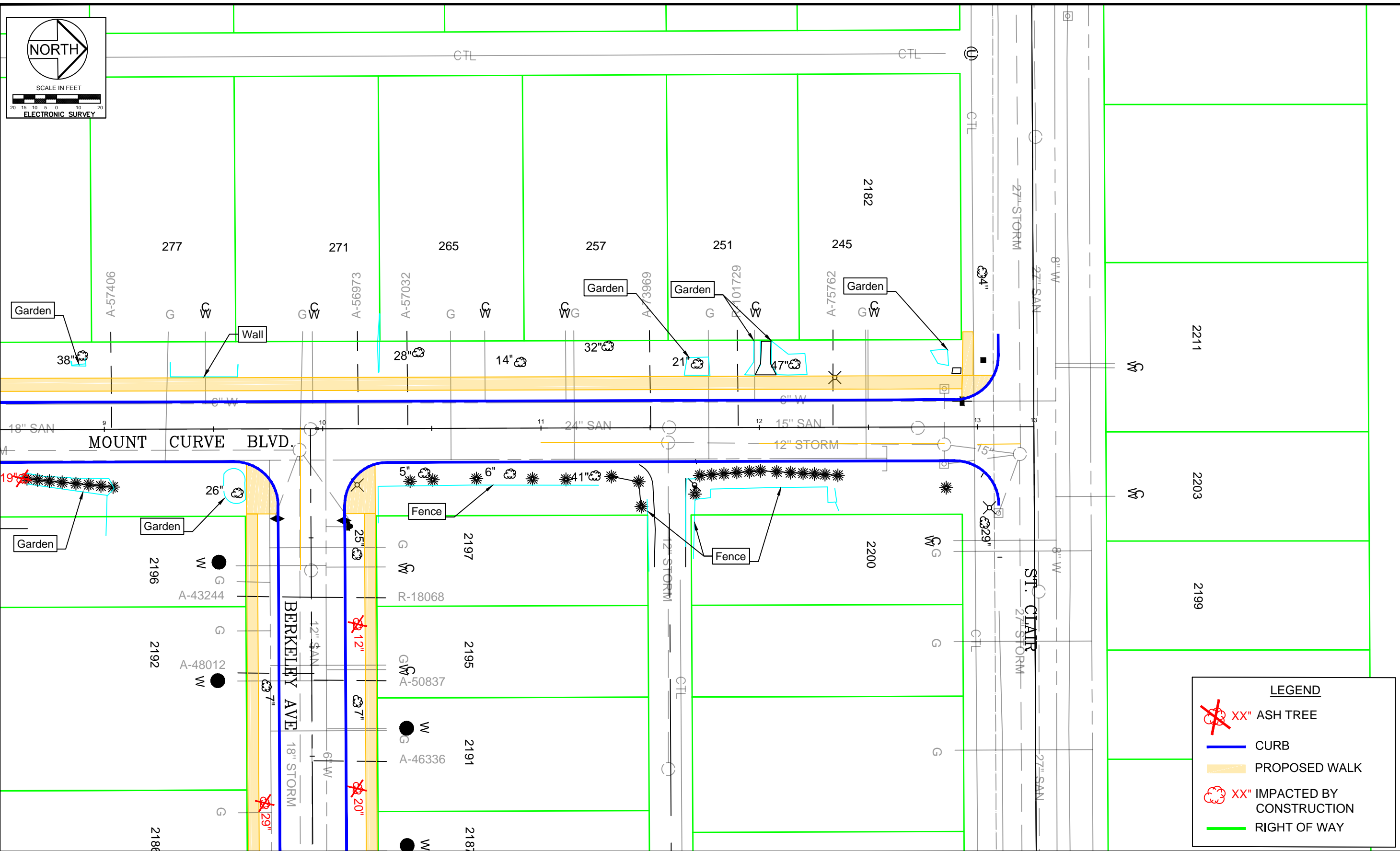
WOODLAWN/JEFFERSON PHASE II
PRELIMINARY DRAFT SUBJECT TO CHANGE WITHOUT NOTICE.

SECTION 5

SHEET NO. 10 OF 14



C:\Users\omerahm.STPAUL\appdata\local\temp\AcPublish_8596\WJ BASE-Exhibit.dwg Dec 12, 2018 - 1:13pm



LEGEND

- XX" ASH TREE
- CURB
- PROPOSED WALK
- XX" IMPACTED BY CONSTRUCTION
- RIGHT OF WAY

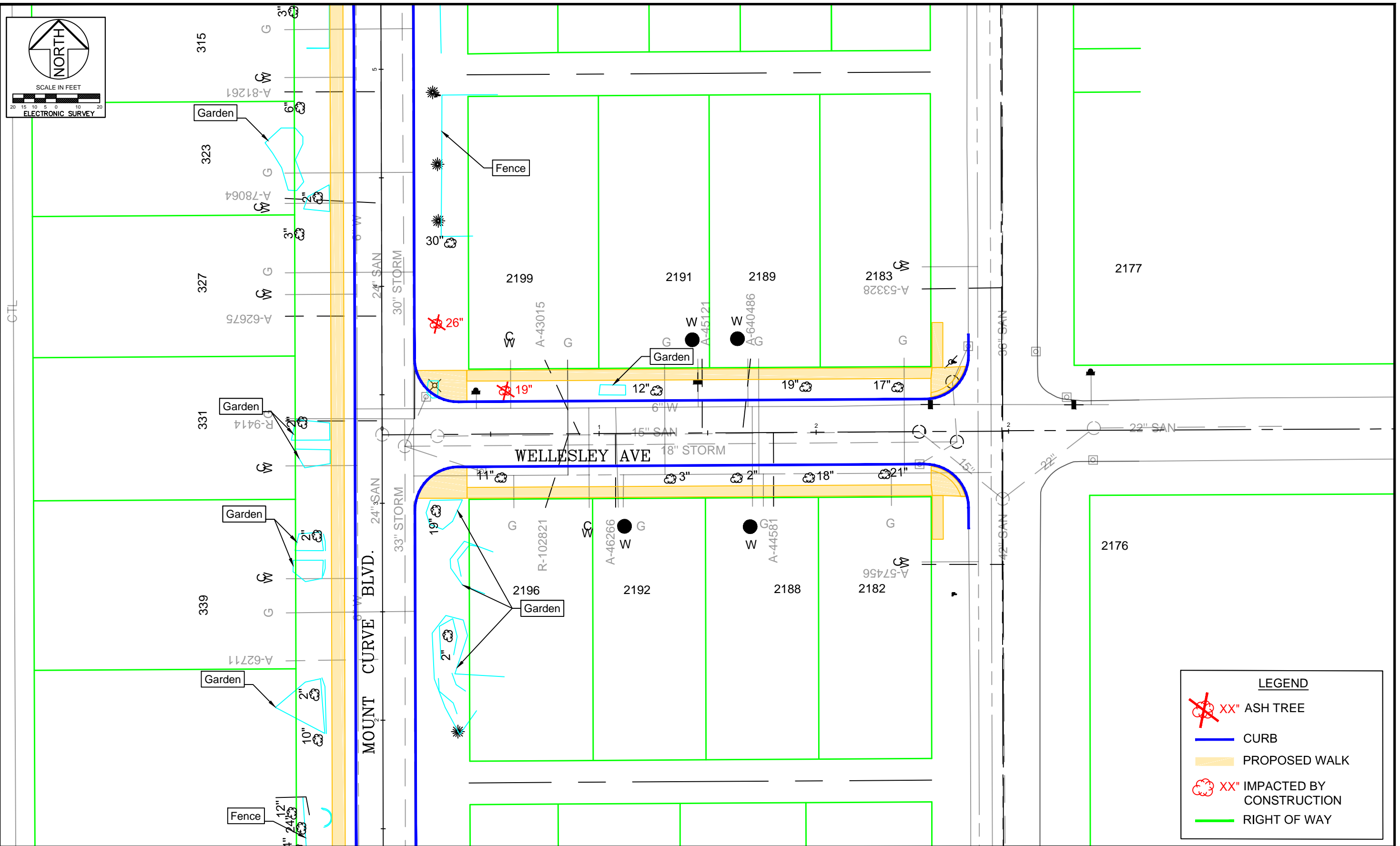
PREPARED BY STREET ENGINEERING DIVISION FOR THE CITY OF ST. PAUL, DEPARTMENT OF PUBLIC WORKS

WOODLAWN/JEFFERSON PHASE II
PRELIMINARY DRAFT SUBJECT TO CHANGE WITHOUT NOTICE.

SECTION 5

SHEET NO. 11 OF 14





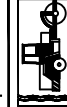
LEGEND

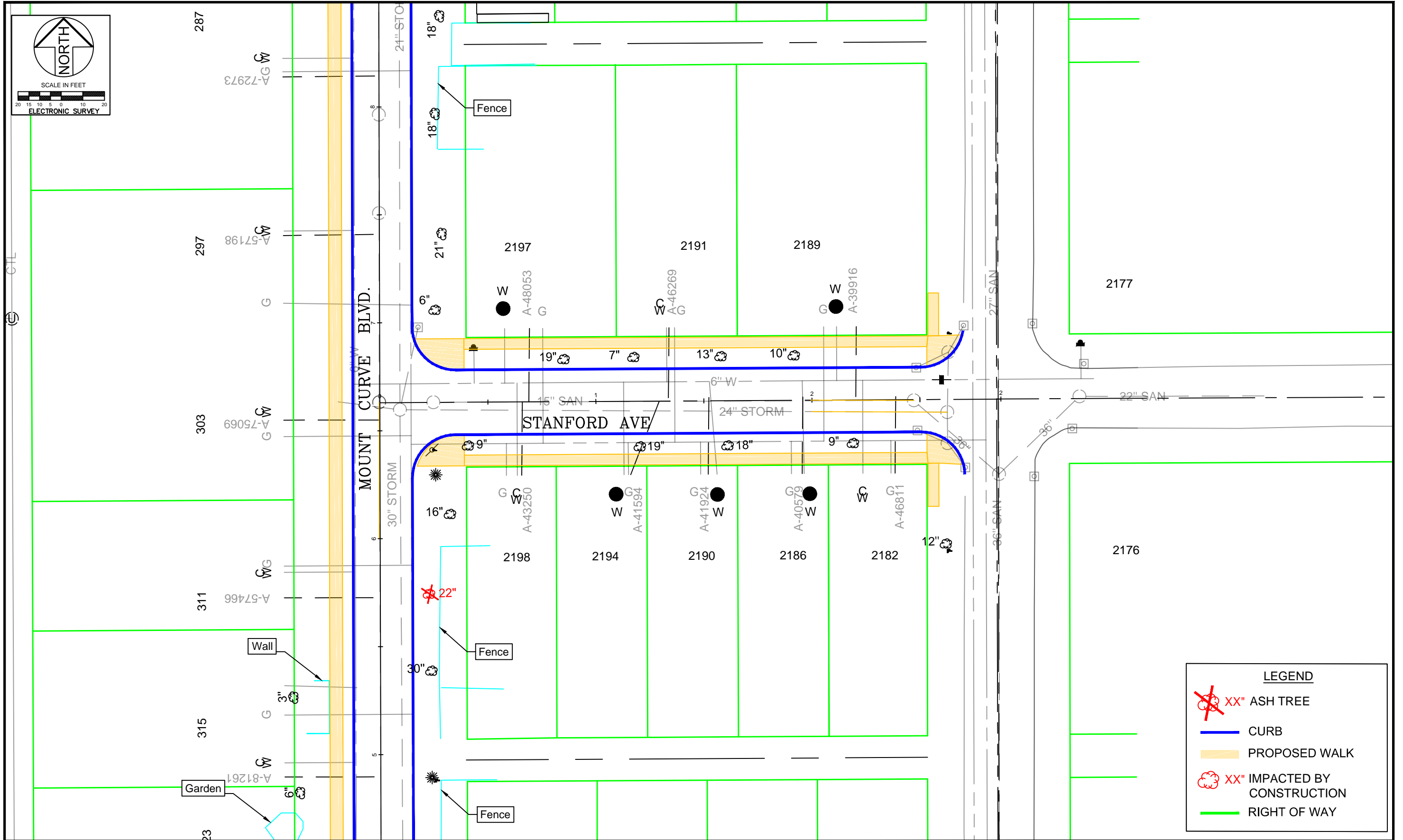
- XX" ASH TREE
- CURB
- PROPOSED WALK
- XX" IMPACTED BY CONSTRUCTION
- RIGHT OF WAY

PREPARED BY STREET ENGINEERING DIVISION FOR THE CITY OF ST. PAUL, DEPARTMENT OF PUBLIC WORKS

WOODLAWN/JEFFERSON PHASE II
PRELIMINARY DRAFT SUBJECT TO CHANGE WITHOUT NOTICE.

SECTION 8





LEGEND

- XX" ASH TREE
- CURB
- PROPOSED WALK
- XX" IMPACTED BY CONSTRUCTION
- RIGHT OF WAY

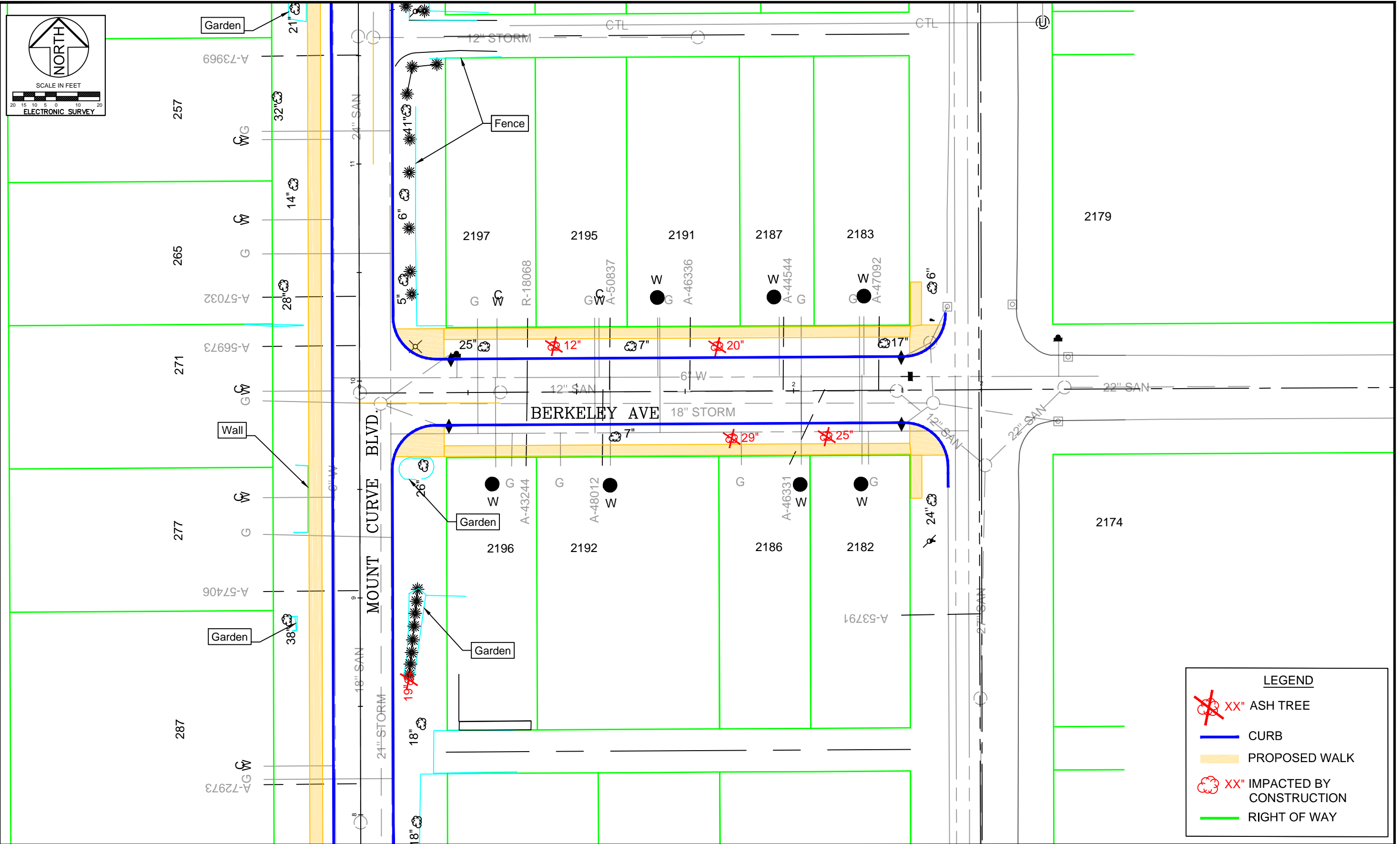
PREPARED BY STREET ENGINEERING DIVISION FOR THE CITY OF ST. PAUL, DEPARTMENT OF PUBLIC WORKS

WOODLAWN/JEFFERSON PHASE II






PRELIMINARY DRAFT SUBJECT TO CHANGE WITHOUT NOTICE.

SECTION 7





LEGEND

-  XX" ASH TREE
-  CURB
-  PROPOSED WALK
-  XX" IMPACTED BY CONSTRUCTION
-  RIGHT OF WAY

PREPARED BY STREET ENGINEERING DIVISION FOR THE CITY OF ST. PAUL, DEPARTMENT OF PUBLIC WORKS

WOODLAWN/JEFFERSON PHASE II
PRELIMINARY DRAFT SUBJECT TO CHANGE WITHOUT NOTICE.

SECTION 6

