

A photograph of a bridge, likely the Rivercentre Bridge, with a traffic light in the foreground. The bridge has a blue and white structure. The background shows a cityscape with buildings and trees.

Westbound Kellogg Boulevard “Rivercentre Bridge” 62574 2018 Repair Project

Informational Meeting
April 12, 2018

Meeting Agenda

- Audience Introduction
- Project Basics
- Traffic Impacts
- Other Local Projects
- Q&A and Audience Input

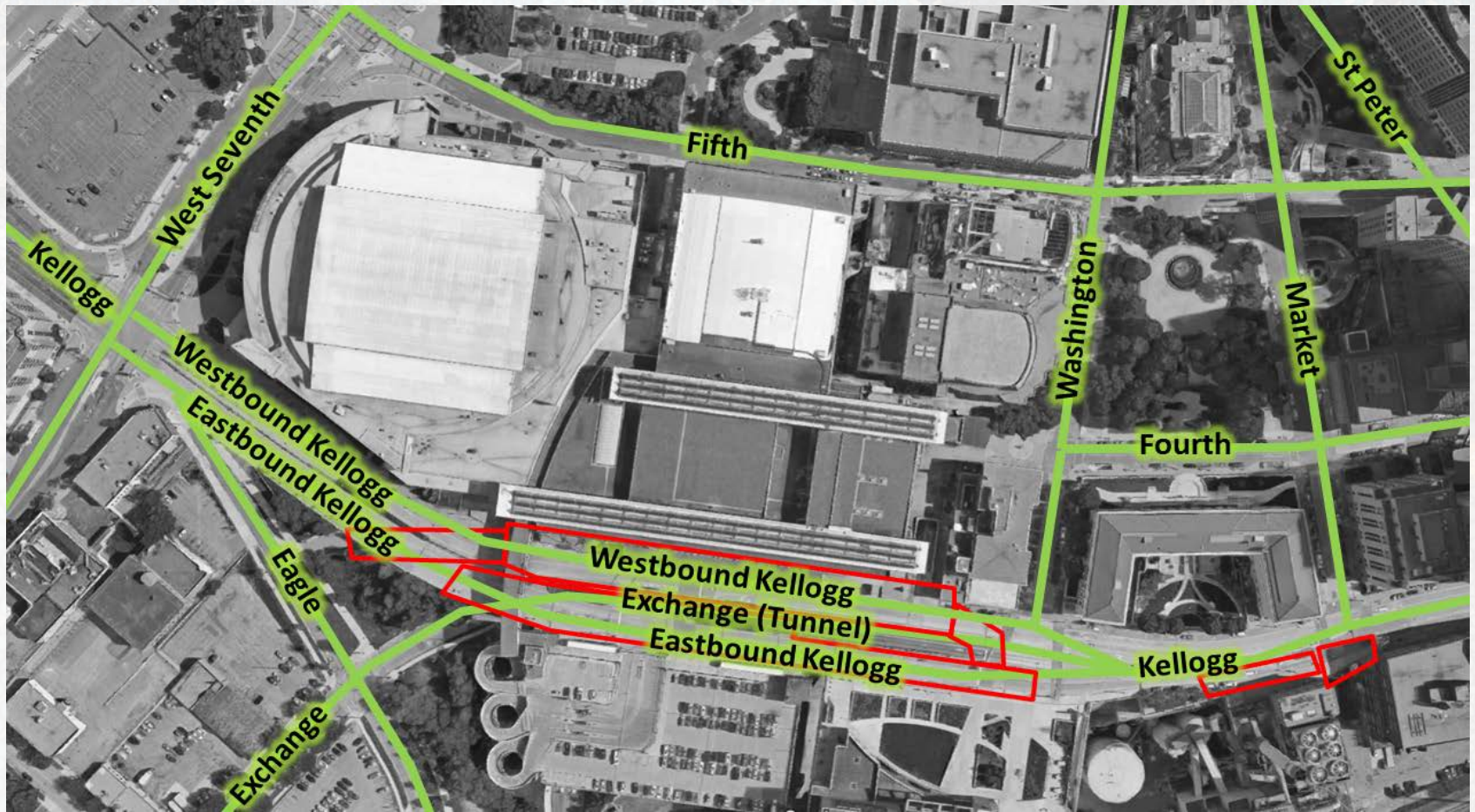
Today's Audience

- City and project staff
- Business operators and managers
- Public officials (safety, emergency)
- Other stakeholders

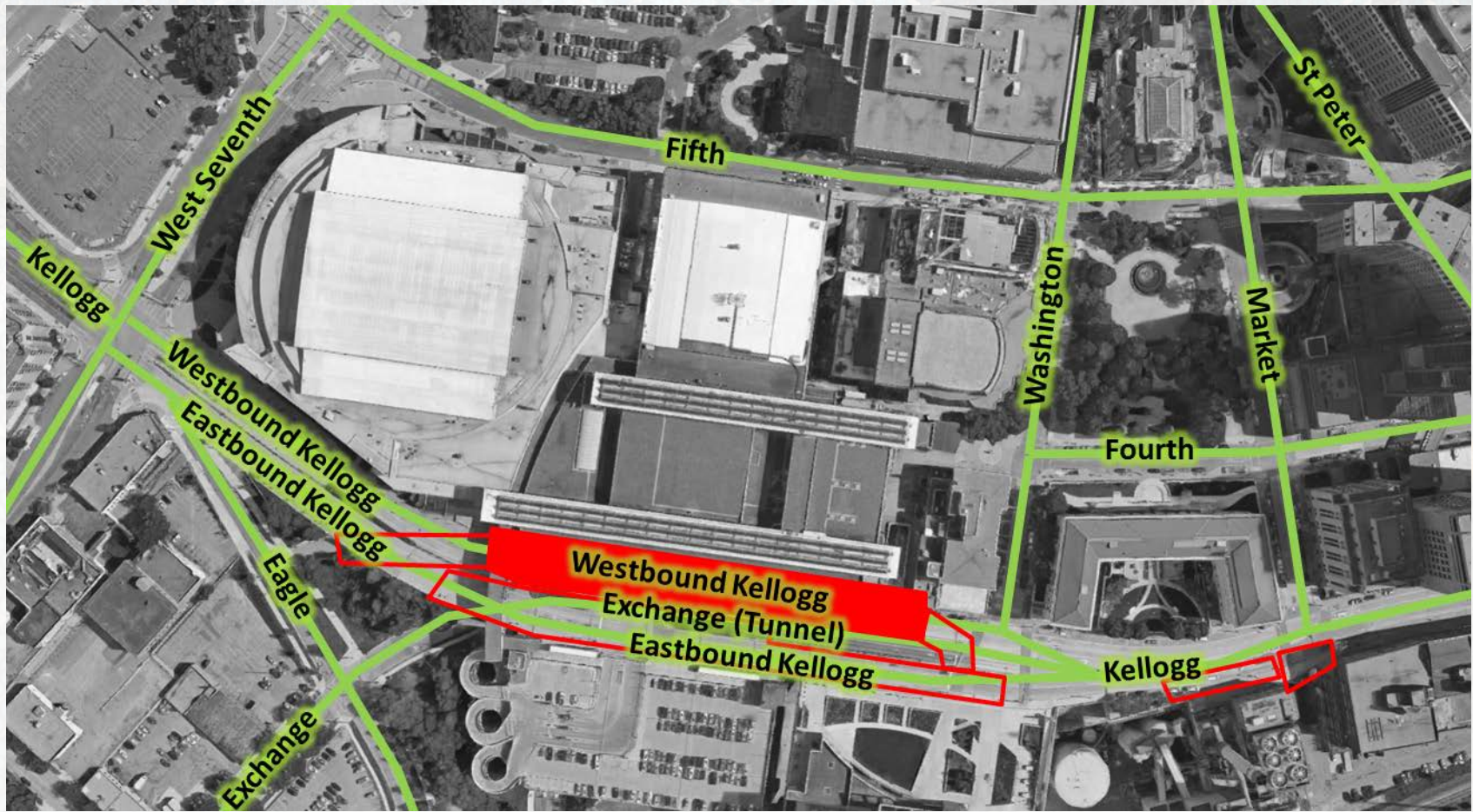
Simplified Stakeholder Needs

- Public Works needs to repair portions of the bridge to preserve the structure.
- Businesses need to minimize project-related impacts to their patrons/operations.
- First responders need practical access for fire and emergency services.
- The general travelling public needs road access for work, tourism, and daily life.

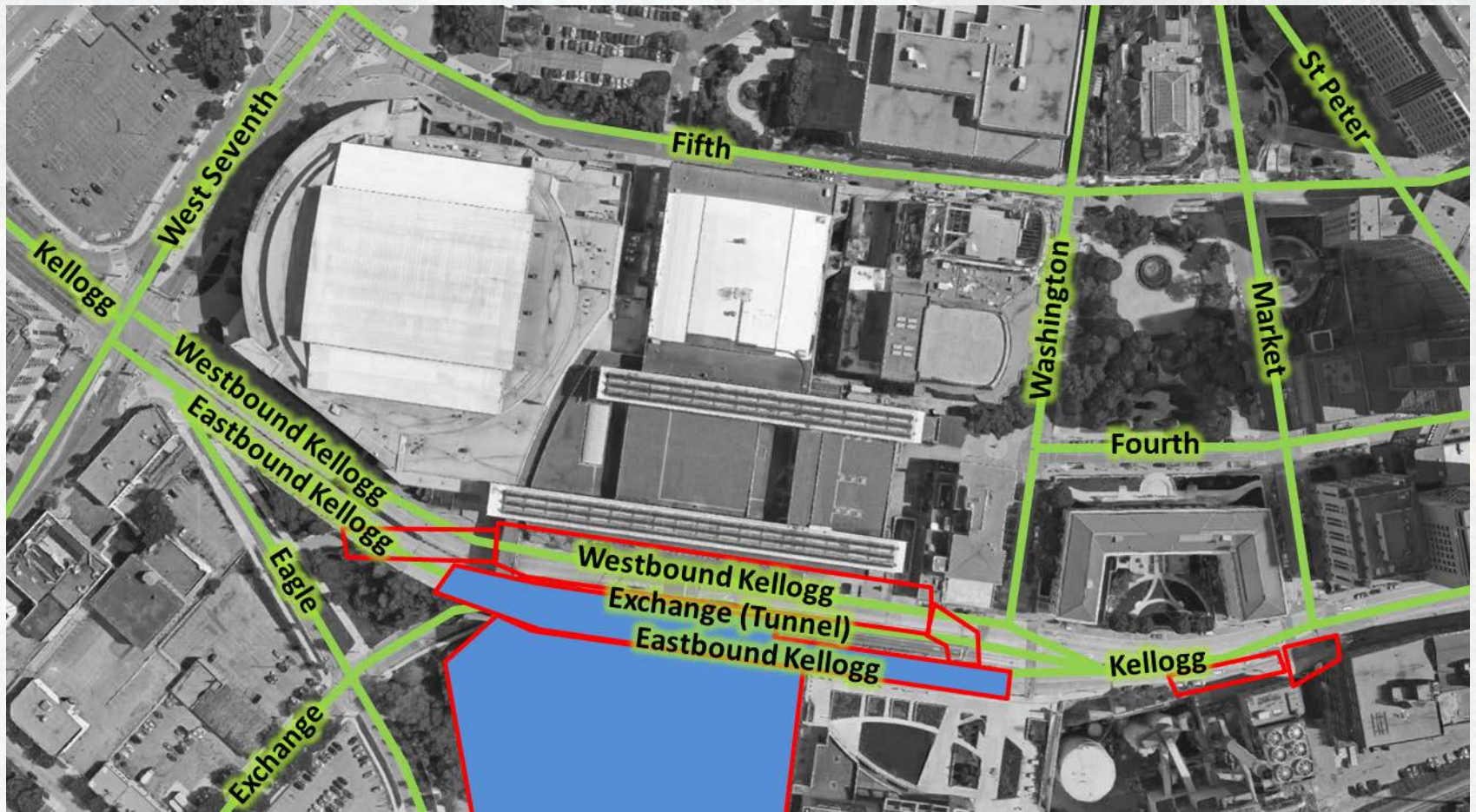
Kellogg is a system of Bridges



This bridge supports Westbound

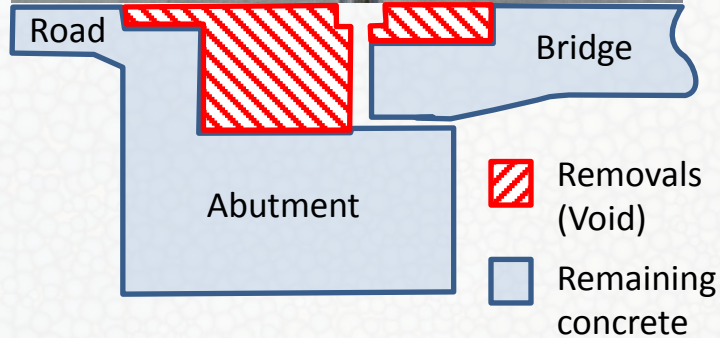


This is not the “ramp” project



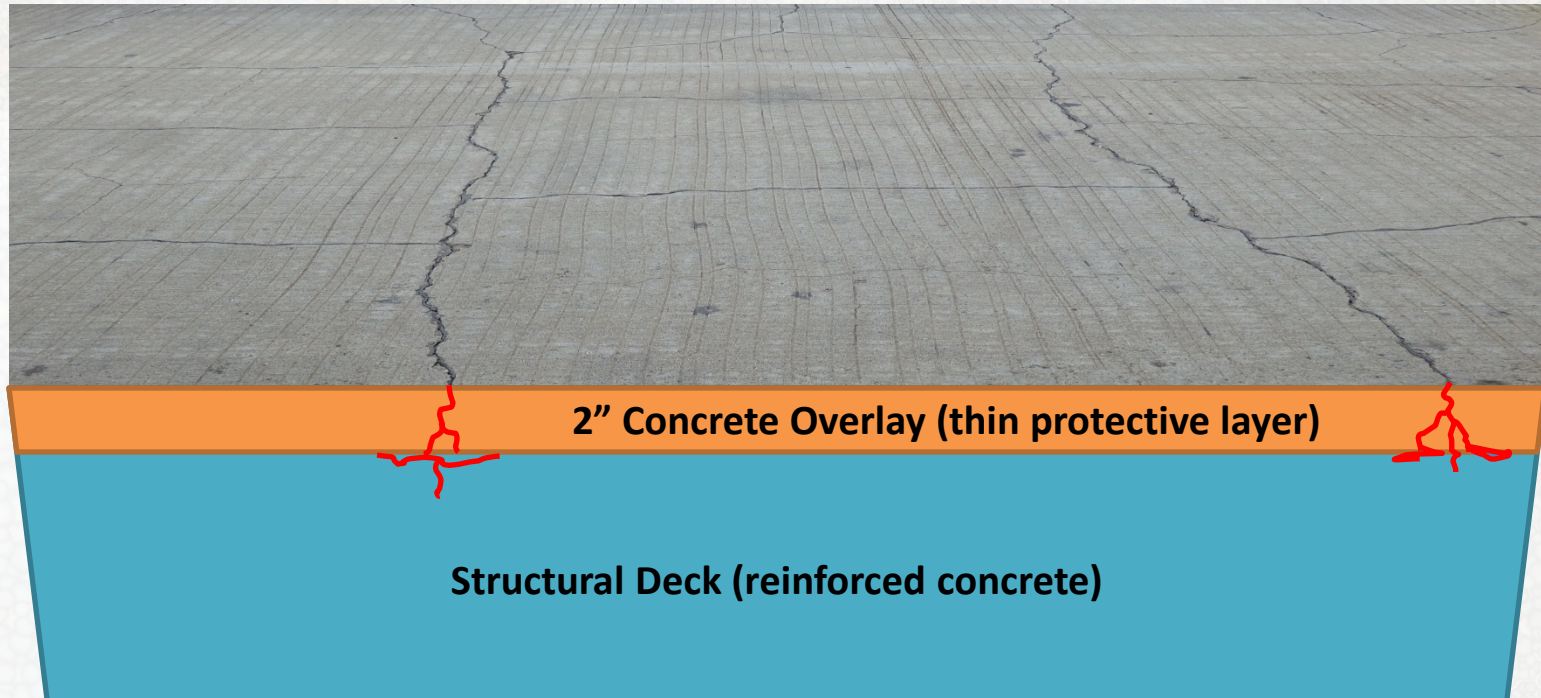
Simplified Repair Scope

- Approximately 4 weeks to replace joints



Simplified Repair Scope

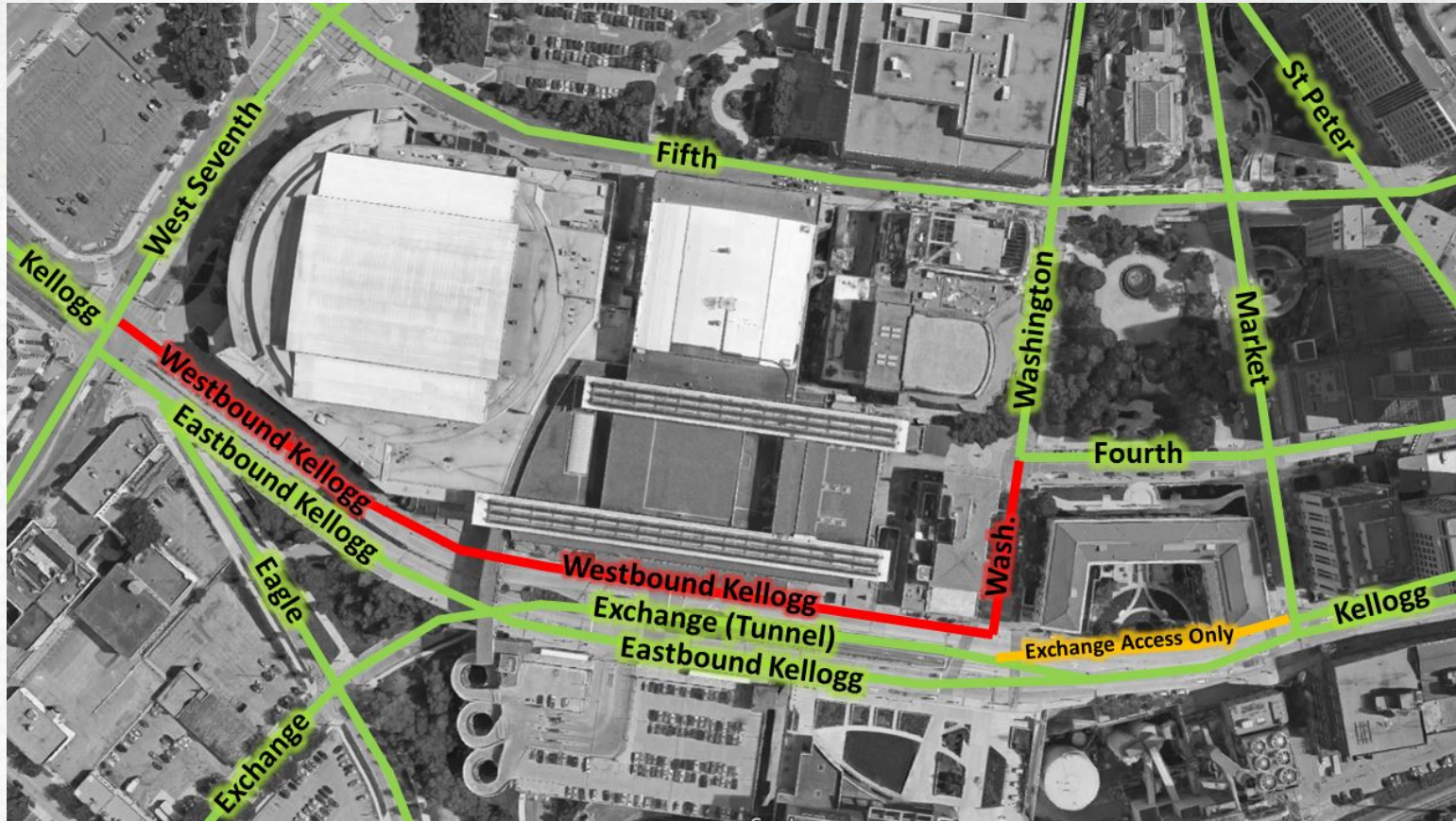
- Approximately 4 weeks to overlay deck



Anticipated Schedule

- July 30 – September 30
- Weekday work, with some nights/Saturdays
- Set to reduce disruption to Xcel/RiverCentre
- Highly dependent on favorable weather
- This is specialty repair work

Traffic Map



Traffic Details

- For project safety and efficiency:
 - WB Kellogg closed btwn W 7th and Washington
- For special operation of the Kellogg Ramp:
 - Washington closed south of 4th Street
 - Open to ramp access only (no parking or drop-offs)
 - Westbound Kellogg cannot turn right onto Wash.
 - Westbound from Market can only access Exchange
 - Also library driveways and Science Museum ramp

Other Local Projects

- Rice Park Re-development
 - Contractor will require Right-of-Way permits
- Ryan Lot Development
 - Major in-street items will be done before July
- Are any other businesses planning projects?

A background image of a city street at night. In the upper left, a traffic light is visible, showing a green light. The street is illuminated by various lights, creating a bokeh effect. In the upper right, a building with a grid-like facade is visible. The overall scene is a blurred urban environment.

Q&A / Audience Input



Thank You



Sample Photo of Joint Removals



Joint #4 (East) – 2 to 3 weeks



Sample Photo of Milling Operation



Sample Photo of Overlay Equipment



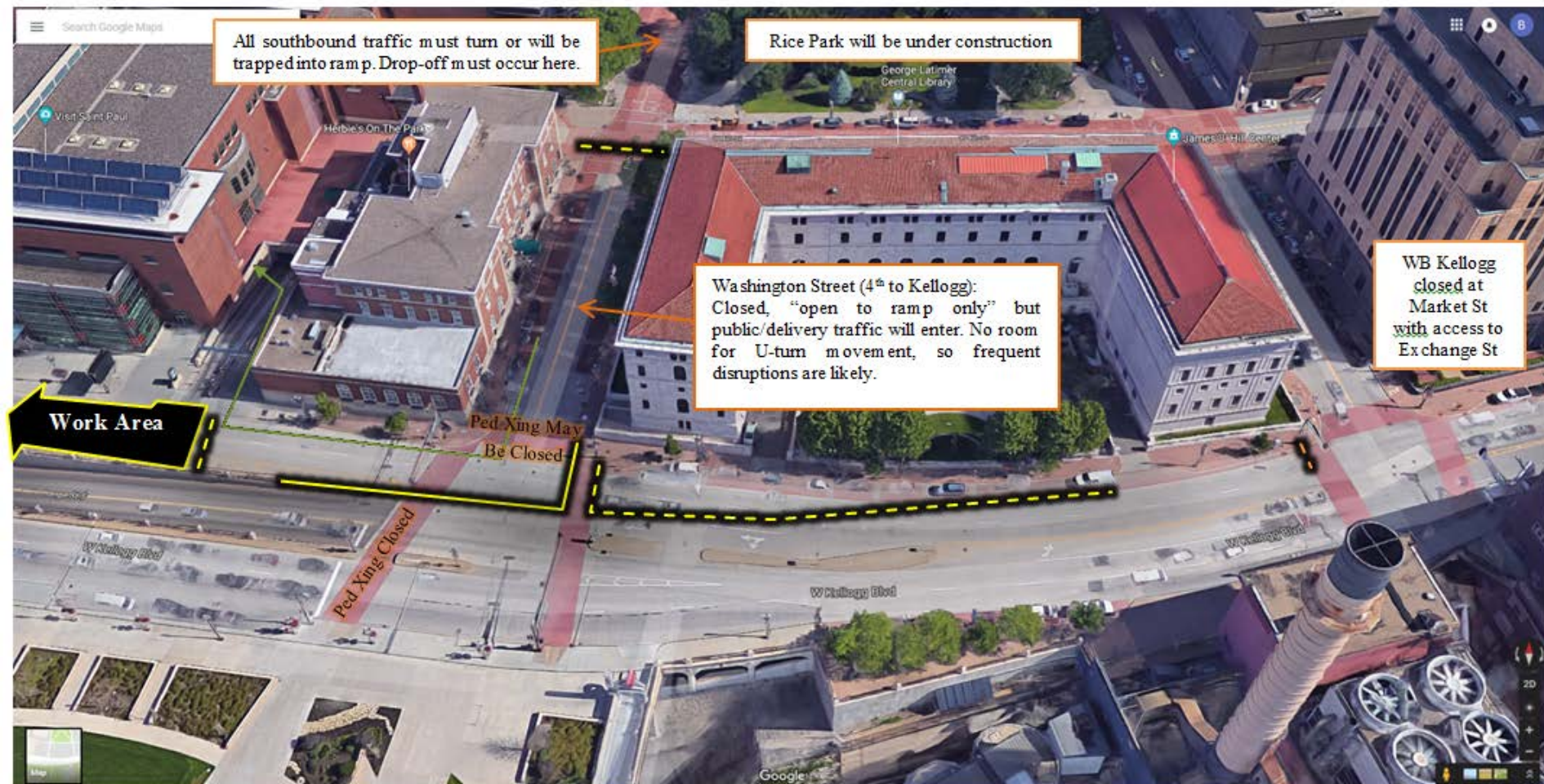
Sample Photo of Overlay Operation



Sample Photo of Gland Installation



Traffic arrangement to accommodate operation of Kellogg Municipal Ramp (with special operational requirements)



Traffic arrangement to minimize public impact (requires Kellogg Municipal Ramp closure)

