



The Most Livable
City in America

Wheelock Parkway Reconstruction

Green Spaces and Vibrant Places

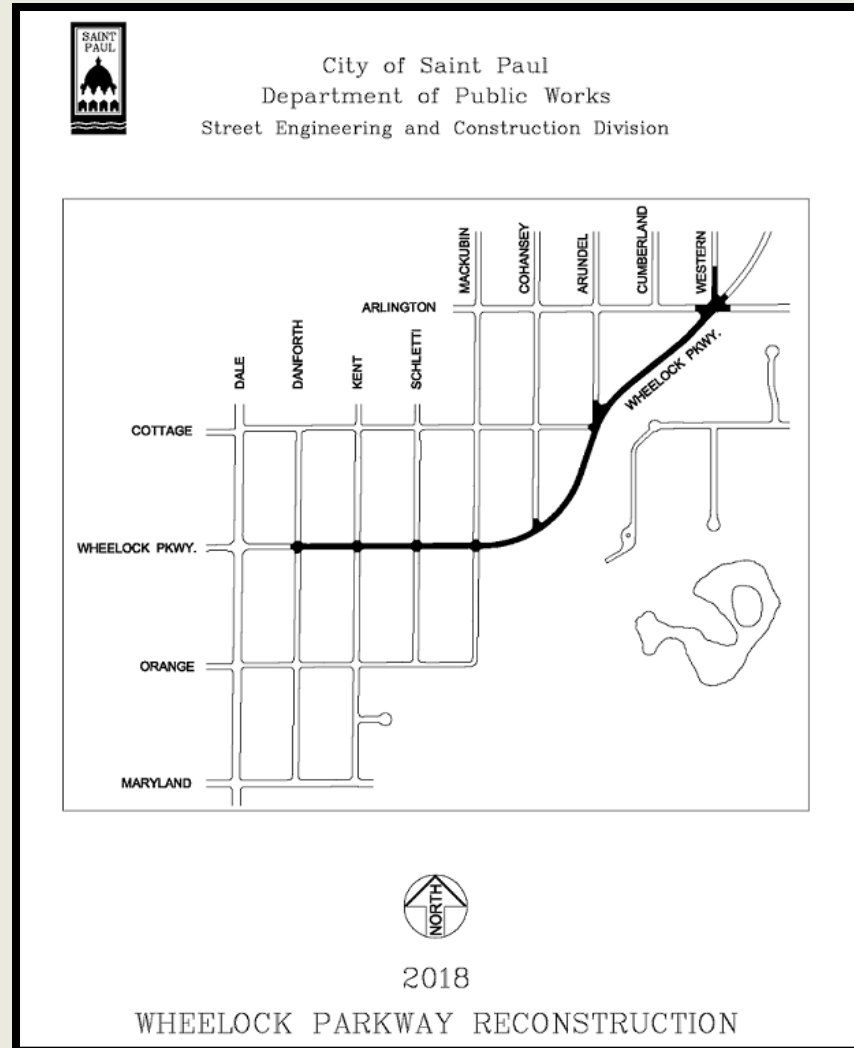




The Most Livable
City in America

Wheelock Parkway Reconstruction

Project Map 2018





The Most Livable
City in America

Wheelock Parkway Reconstruction

Presenters

Project Engineer	Dan Haak	651-266-6084
------------------	----------	--------------

Parks & Recreation	Kathleen Anglo	651-266-6368
--------------------	----------------	--------------

Street Lighting	Ben Hawkins	651-266-6256
-----------------	-------------	--------------

Sewers	Richard Ekobena	651-266-6253
--------	-----------------	--------------

SPRWS (Water)	Ramsey Coronado	651-266-6294
---------------	-----------------	--------------

Forestry	Zach Jorgensen	651-632-2437
----------	----------------	--------------

Real Estate Section	Lynn Moser	651-266-8858
---------------------	------------	--------------



The Most Livable
City in America

Wheelock Parkway Reconstruction

Project Schedule

- This meeting is informational only
- City Council approval/Public Hearing in January 2018
- Design winter of 2017/2018
- Start construction summer 2018
- End construction fall 2018



The Most Livable
City in America

Wheelock Parkway Reconstruction

Included in the Project

- Sidewalk and ADA-compliant pedestrian ramps
- Bike trail 10-feet (south side)
- New concrete curb and gutter
- New pavement (width = 24-feet)
- Concrete driveway aprons
- Utility upgrades
- Lantern-style street lighting
- Removal of all Ash trees, dead trees, and stumps
- Sodded boulevards
- Tree planting



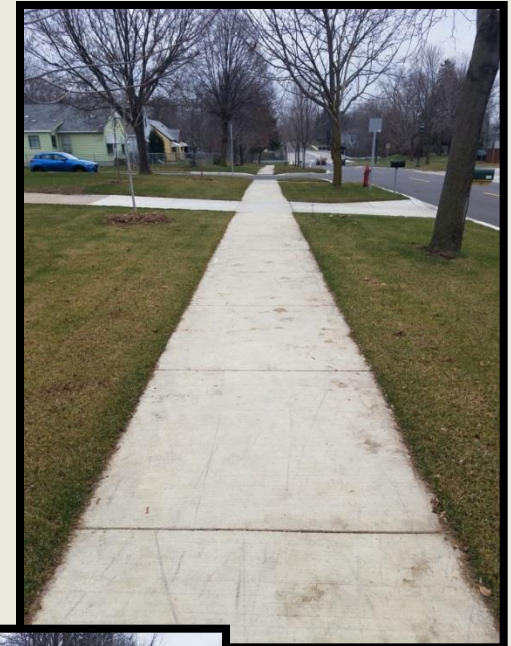
The Most Livable
City in America

Wheelock Parkway Reconstruction

Sidewalk Replacement

Sidewalk Replacement

- 5-foot walk
- Typically set at property line
- Realignment (various locations)
- Adjacent to bike trail at intersections





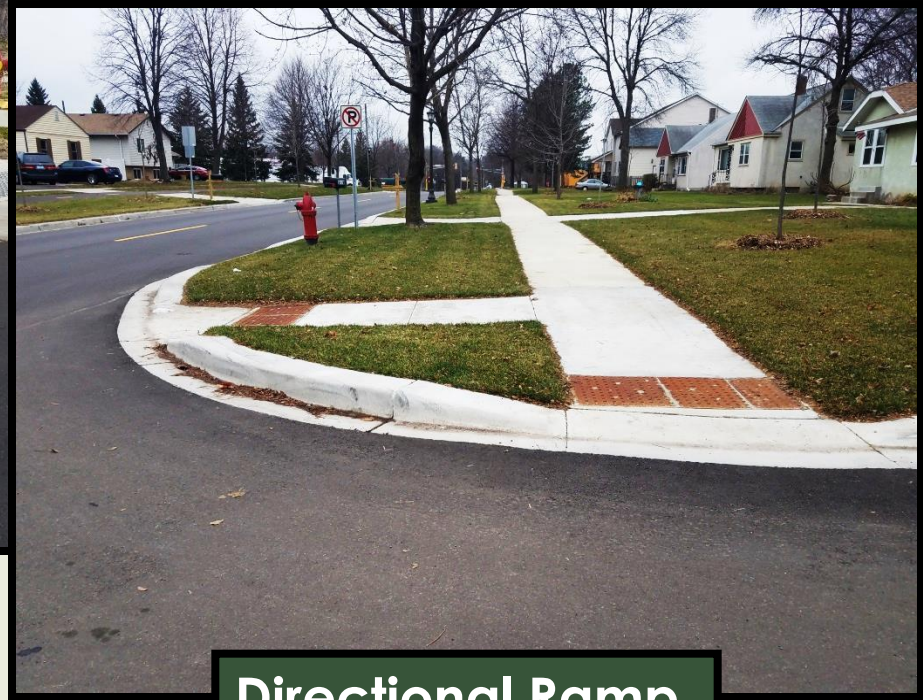
The Most Livable
City in America

Wheelock Parkway Reconstruction

ADA-Compliant Pedestrian Ramps



Fan Ramp



Directional Ramp



The Most Livable
City in America

Wheellock Parkway Reconstruction

Bicycle Trail

Bicycle Trail

- 10-foot bituminous trail
- 5-foot minimum offset from curbs
- Adjacent with sidewalk at intersections
- Tabled crosswalk at intersections



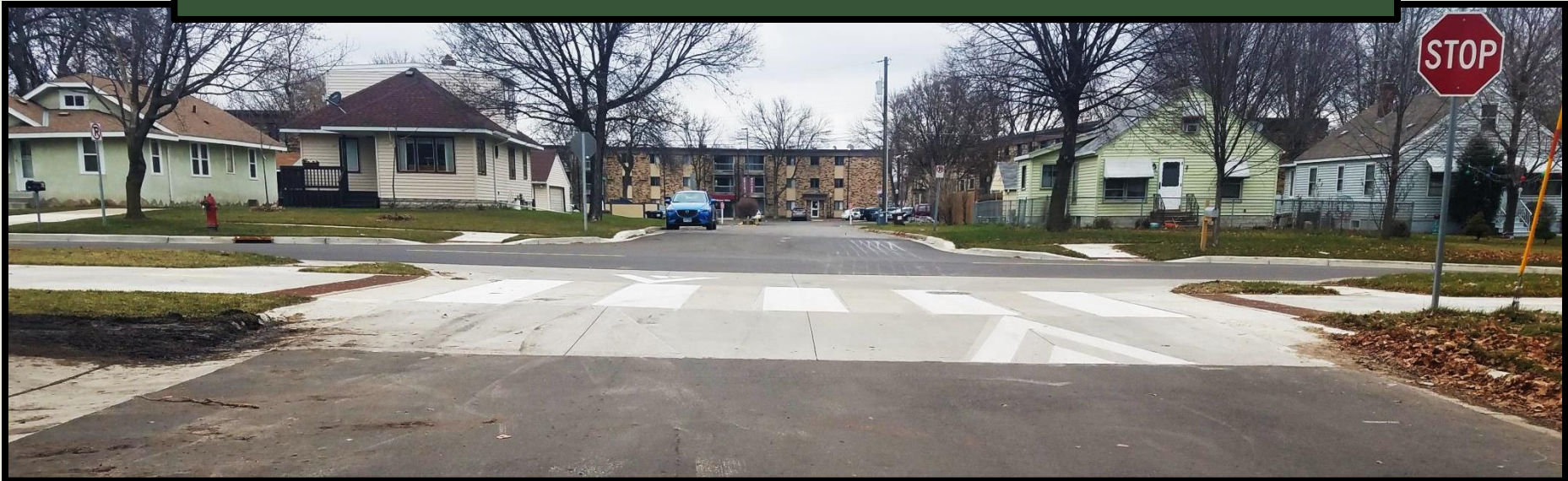


The Most Livable
City in America

Wheelock Parkway Reconstruction

Tabled Crosswalks

- Crosswalk is raised 3-inches
- Improves accessibility for bicyclists and pedestrians
- Traffic-calming design

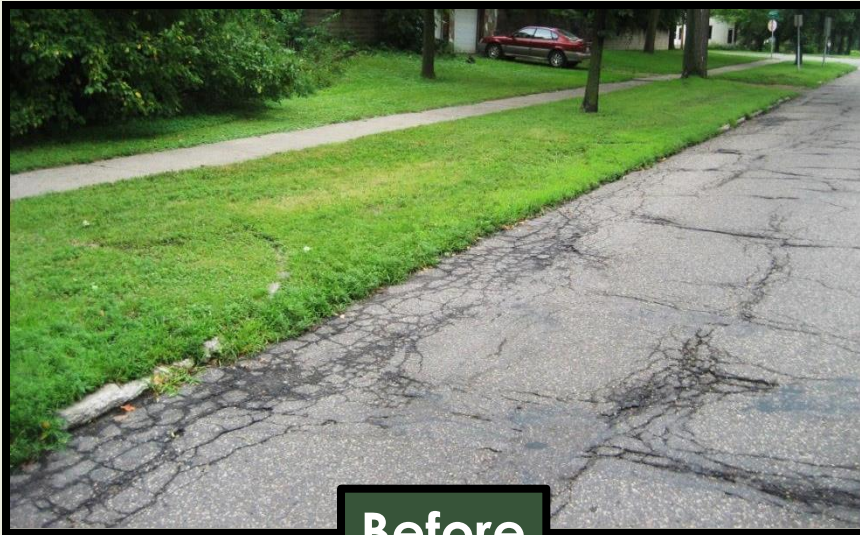




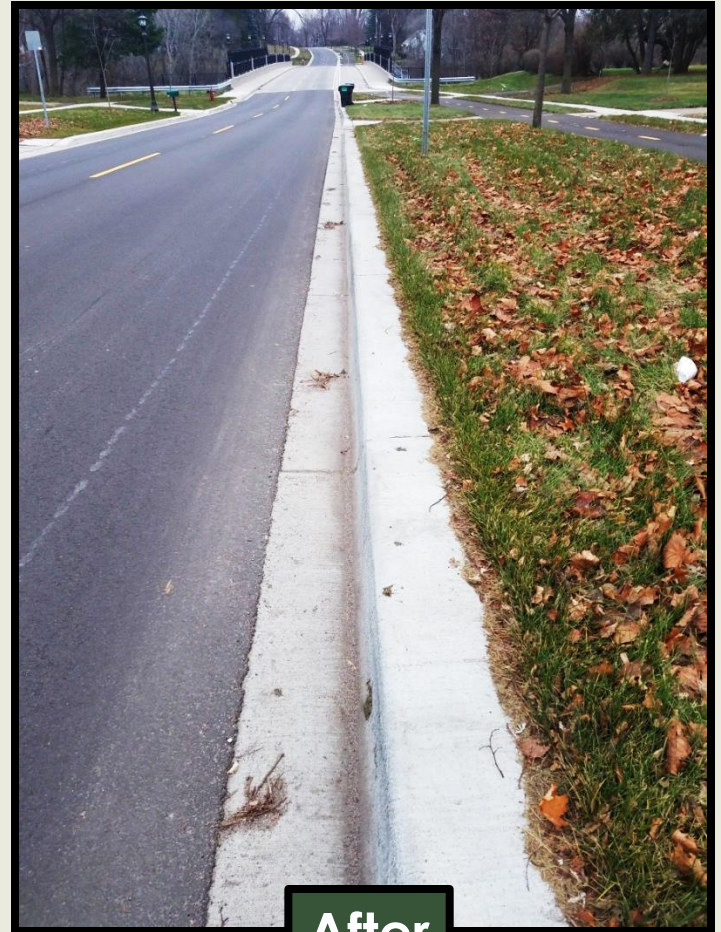
The Most Livable
City in America

Wheelock Parkway Reconstruction

Concrete Curb and Gutter



Before



After



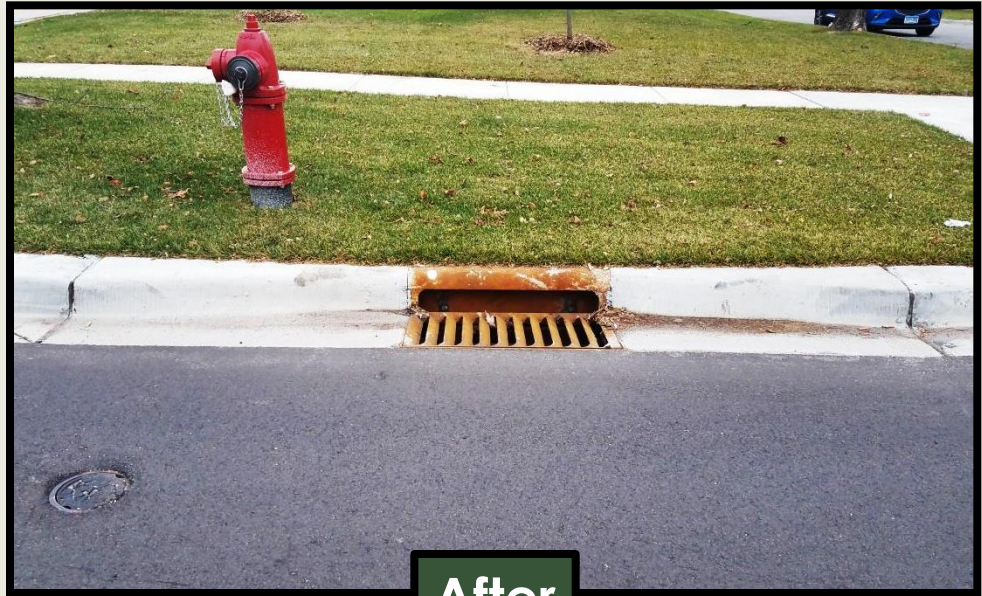
The Most Livable
City in America

Wheelock Parkway Reconstruction

Concrete Curb and Gutter With Catch Basins



Before



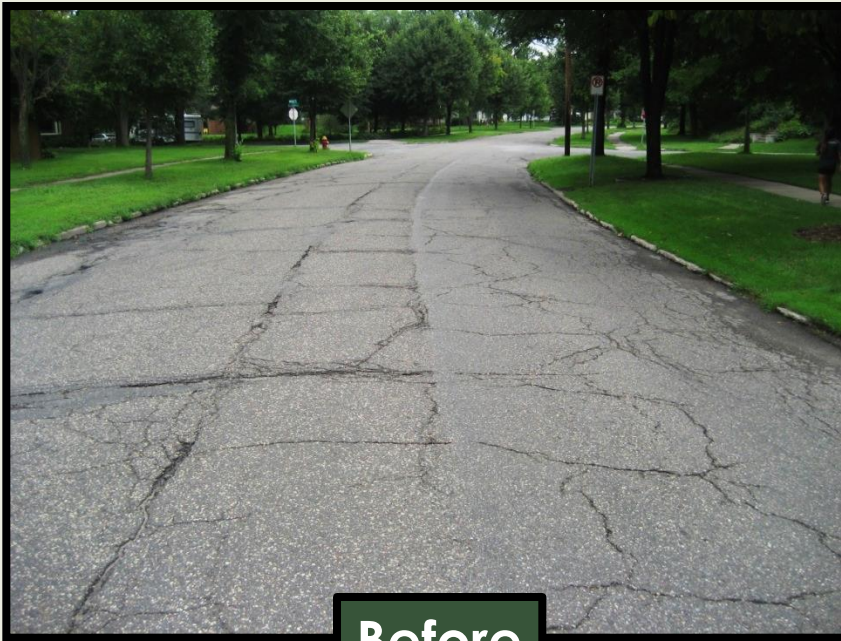
After



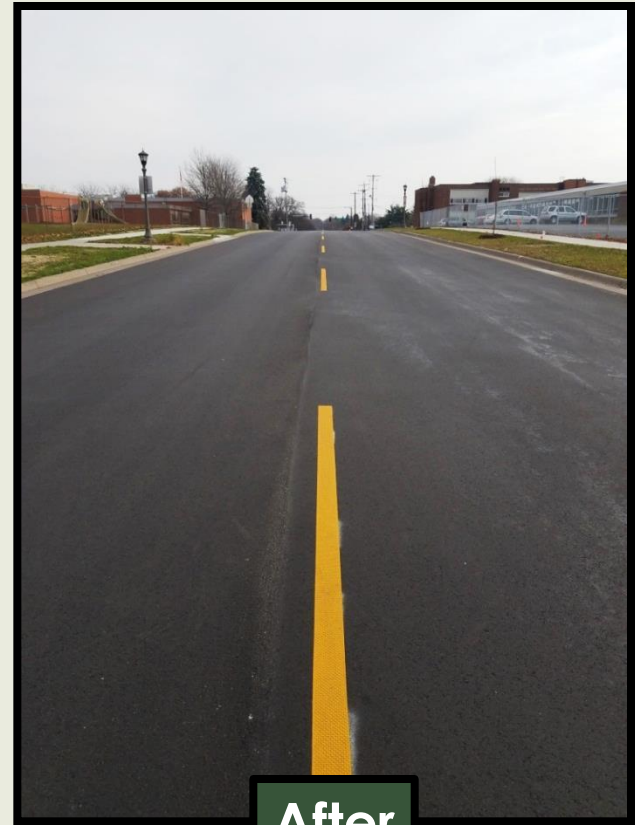
The Most Livable
City in America

Wheelock Parkway Reconstruction

Bituminous Pavement



Before



After



The Most Livable
City in America

Wheelock Parkway Reconstruction

Driveways



Driveway aprons will be concrete regardless of any existing special material



New driveway aprons will be reconstructed at 12-feet max, 30-feet beyond the garage



The Most Livable
City in America

Wheelock Parkway Reconstruction

Grade and Sod Boulevards

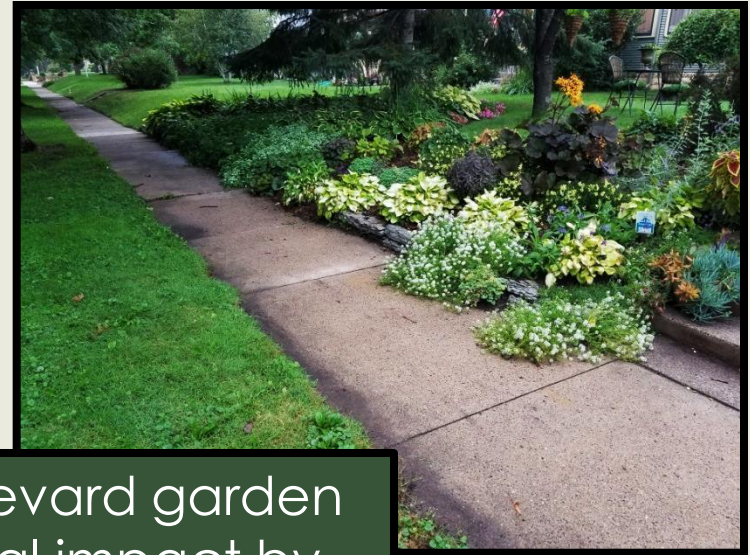
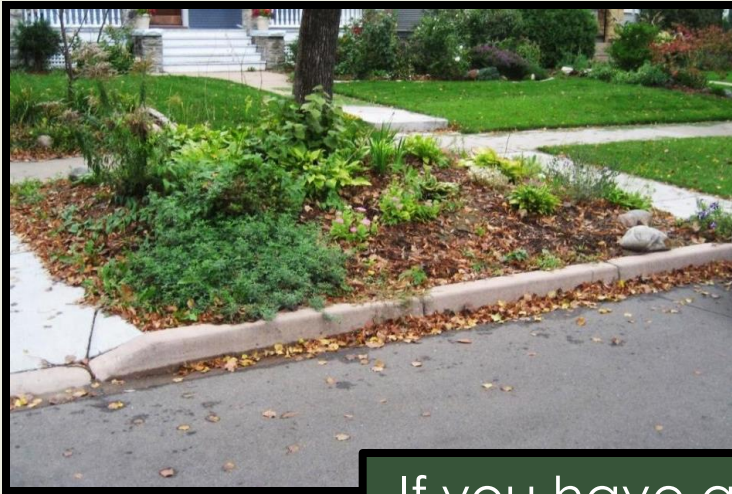




The Most Livable
City in America

Wheelock Parkway Reconstruction

Boulevard Gardens



If you have a boulevard garden or plants (potential impact by construction) and you want to salvage them, you should remove the plants in the spring before construction works begins



The Most Livable
City in America

Wheelock Parkway Reconstruction

Lantern-style Street Lights



Before



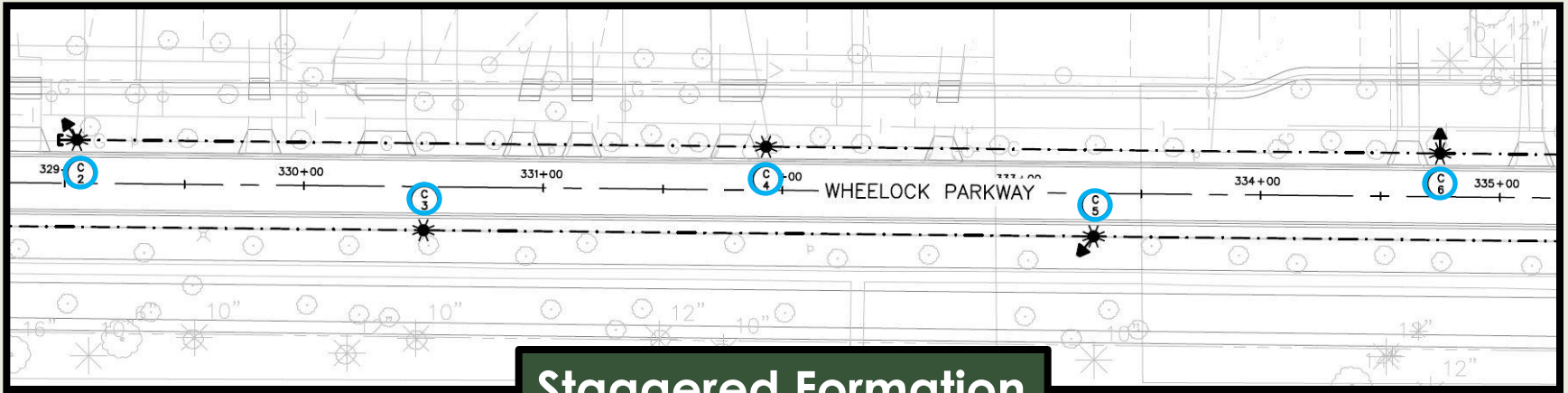
After



The Most Livable
City in America

Wheelock Parkway Reconstruction

Lantern-style Street Lights



Staggered Formation



The Most Livable
City in America

Wheelock Parkway Reconstruction

Tree Removal





The Most Livable
City in America

Wheelock Parkway Reconstruction

Emerald Ash Borer

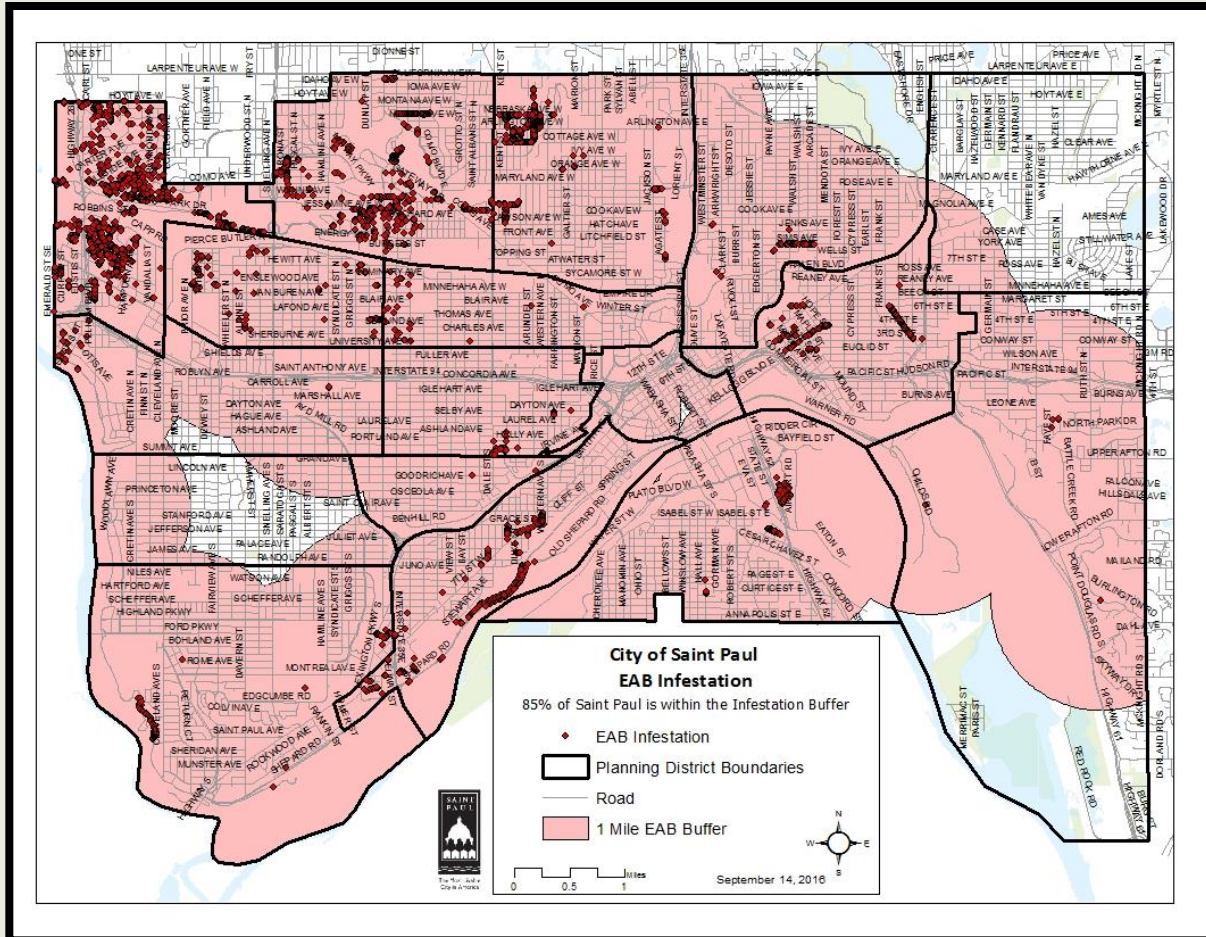




The Most Livable
City in America

Wheelock Parkway Reconstruction

Emerald Ash Borer Infestation





The Most Livable
City in America

Wheelock Parkway Reconstruction

Tree Planting

Proposed Planting List

- Crabapple
- Elm Hybrids
- Hackberry
- Ironwood
- Kentucky Coffee
- London Plane



- Northern Oak
- Red Oak
- River Birch
- Serviceberry
- Swamp White Oak



The Most Livable
City in America

Wheelock Parkway Reconstruction

Public Art

The City of Saint Paul dedicates 1% of the project cost to public art





The Most Livable
City in America

Wheelock Parkway Reconstruction

Below the Surface







The Most Livable
City in America

Wheelock Parkway Reconstruction

Xcel Energy Gas Main and Service Replacement







SAINT PAUL REGIONAL WATER SERVICES

Graeme Chaple – Damage Prevention
and Inspections Supervisor

Cell: 651.775.3030

Email: graeme.chaple@ci.stpaul.mn.us

WATER MAIN REPLACEMENT



- ▶ Water main is approximately 8' feet deep
- ▶ Most existing residential water mains are 6" diameter cast iron pipe
- ▶ Most mains are replaced as 8" diameter ductile iron pipe or 8" PVC dependent on existing soils
- ▶ Installation by PW contractor, SPRWS providing temporary water
- ▶ Water main must pass a series of bacterial tests, pressure tests, and conductivity tests prior to being put in service

TEMPORARY WATER MAINS



- ▶ 2" PVC pipe laid in the grassy area or on edge of sidewalk
- ▶ Fully bacterially tested prior to hook-up
- ▶ Will become quite warm during the summer
- ▶ Water is provided at no cost when connected to temporary water

TEMPORARY WATER CONNECTION



- ▶ Back fed through outside hose spigot through the use of a grey potable water rated hose
- ▶ A wye is installed to allow use of garden hose while connected
- ▶ Notification of temporary water will be posted on front door
- ▶ Temporary water crew will need to access the water meter inside building twice, once during install and once for the take down

WATER SERVICE CONNECTION



- ▶ Water services are re-connected to the main once the watermain is fully tested and live
- ▶ Most existing copper services are reconnected with only excavation at the watermain
- ▶ All lead services are replaced with copper pipe from the main to property line or water service valve box at SPRVS cost

LEAD SERVICE REPLACEMENT



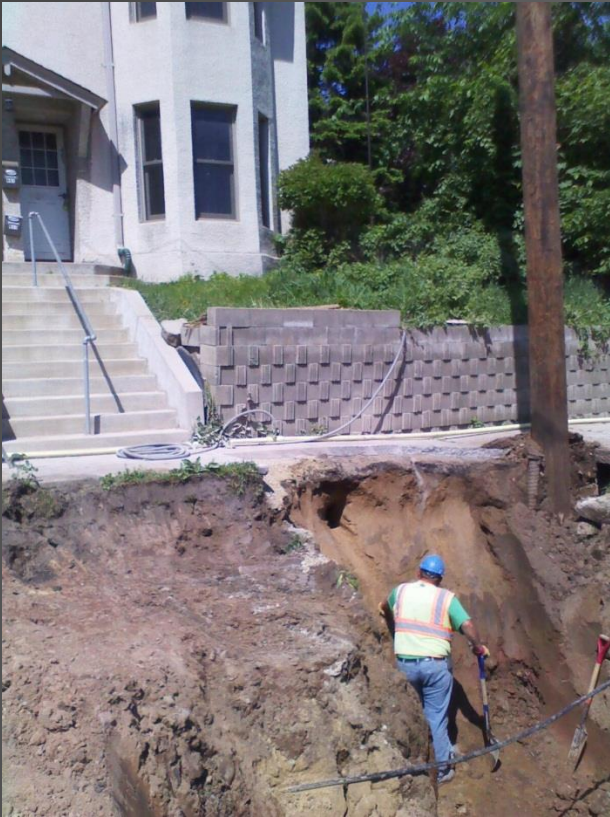
- ▶ All Lead water services will be replaced from the water main to the property line or water service stop box
- ▶ Replacements to stop box are only done if there is an obstruction at the property line or if a private plumber has already replaced the water service inside property to the stop box

LEAD SERVICE REPLACEMENT



- ▶ New 1" copper water service installed in same location as the old 5/8^{ths} or 3/4^{ths} lead service
- ▶ Old lead pipe either removed or abandoned in place, depending on situation
- ▶ Transition joint installed at property line from new copper service to existing material inside property.

LEAD SERVICE REPLACEMENT INSIDE PROPERTY



- ▶ Can be assessed onto taxes over 20 years
- ▶ Building owner will have to obtain private plumber and get quotes
- ▶ Excavation of yard generally not needed
- ▶ Costs are reduced because restoration is done in the ROW by the project
- ▶ Plumber list and information will be mailed to property owners addresses
- ▶ Additional information available from the SPRWS Engineering Service Desk 651.266.6270

CONTACT INFO

▶ Graeme Chaple

Damage Prevention and Inspections Supervisor

Cell: 651.775.3030

Email: graeme.chaple@ci.stpaul.mn.us

▶ SPRWS Engineering Service Desk

651.266.6270

1900 Rice Street

Saint Paul, MN 55113

City of Saint Paul

Public Works

Sewer Division

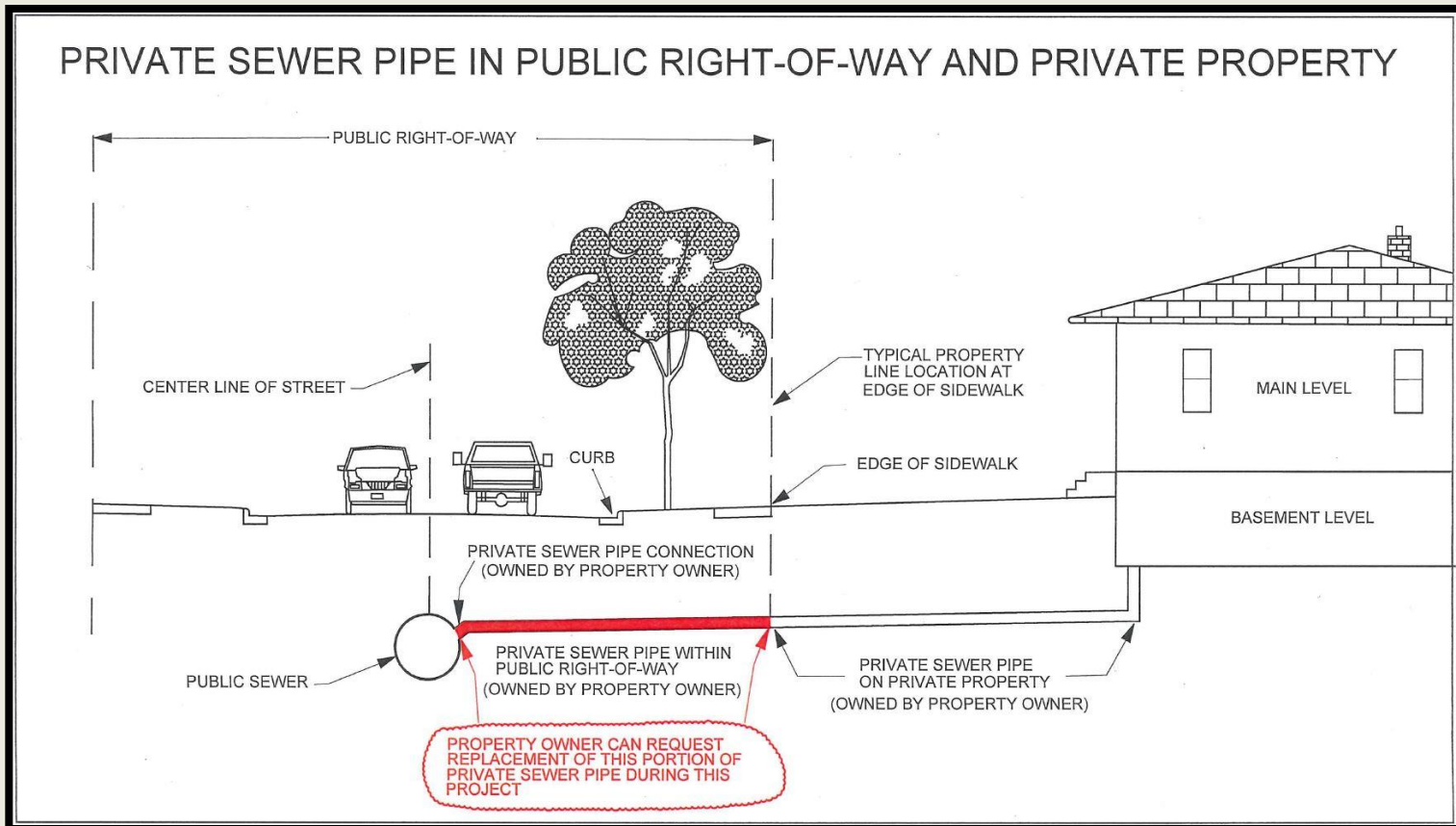




The Most Livable
City in America

Wheelock Parkway Reconstruction

Sanitary Sewer Replacement Option

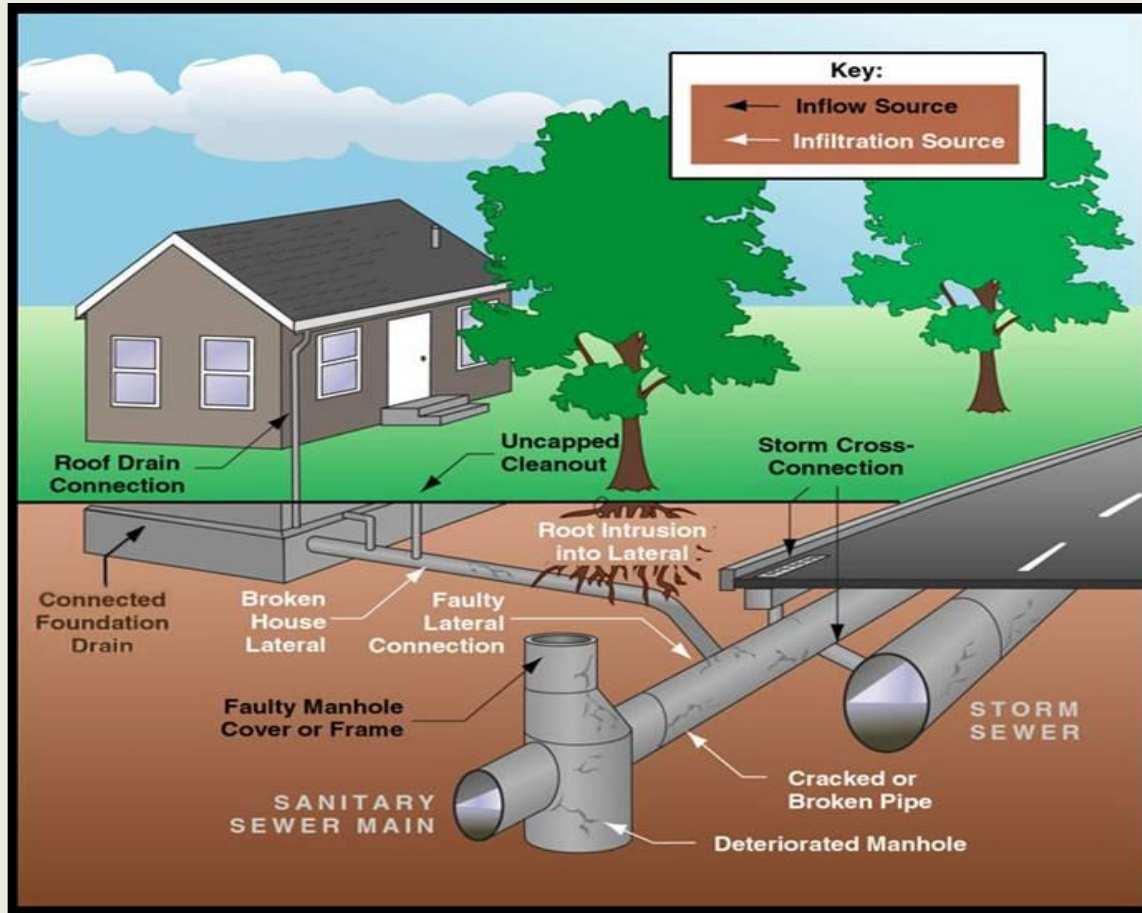




The Most Livable
City in America

Wheelock Parkway Reconstruction

Sanitary Sewer Service Issues





The Most Livable
City in America

Wheelock Parkway Reconstruction

Warning Signs of a Defective Sewer Service

- Does your drain run slowly? Or gurgle?
- Do you have sewer odors?
- Do you know where your sewer service runs?
- Are there bushes or trees planted over it?
- Has your sewer line ever been cleaned and inspected?
- Do you have a garbage disposal and do you use it for everything?
- Is there a sinkhole or depression near your building, boulevard, or street?

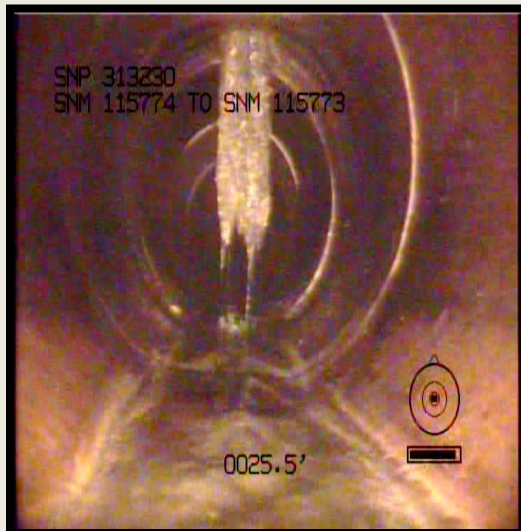


The Most Livable
City in America

Wheelock Parkway Reconstruction

Common Sewer Problems

- Dropped connection to the main
- Broken clay pipe
- Root intrusion





The Most Livable
City in America

Wheelock Parkway Reconstruction

Benefits of Repairing the Sanitary Sewer Service

- **Extends the system service life**
- **Reduces the risk of:**
 - ✓ Sewer backups
 - ✓ Sinkholes
 - ✓ Rodent access
- **Cheaper during construction:**
 - ✓ Fixed rate
 - ✓ Don't have to pay for street restoration
 - ✓ 20-years to pay





Wheelock Parkway Reconstruction

Sanitary Sewer Service

COST COMPARISON INFORMATION

Replacing Your Sewer Service From the Main to the Property Line

During Construction

Approximately **\$3,000**

- Cost to property owner can be spread out over a 20-year term/assessment
- No street restoration costs

After Construction

Typically More Than **\$5,000**

- Restoration costs are paid by the property owner

If you are interested – **ACT NOW!**



The Most Livable
City in America

Wheelock Parkway Reconstruction

Living Through a Construction Project

- ✓ Noise
- ✓ Dust
- ✓ Mud
- ✓ Limited access
- ✓ Inconvenient





The Most Livable
City in America

Wheelock Parkway Reconstruction

Construction

- Your street will be dug up numerous times
- The work is done in layers and often by different crews doing different types of work
- Plan on 4-months of disruption
- Residents and emergency vehicle access will be maintained at all times



The Most Livable
City in America

Wheelock Parkway Reconstruction

Construction

- All of the construction is done by private construction companies
- They are very busy and this isn't their only project
- Most road work is weather-dependent and rain *will* delay us
- Contractors work five-to-six days a week from 7:00 a.m. until 5:00, 6:00, 7:00 p.m.
- The City of Saint Paul will have an onsite representative (project inspector) to inspect the contractors' work



The Most Livable
City in America

Wheelock Parkway Reconstruction

Roadway Construction Signs



ROAD CLOSED TO THRU TRAFFIC

means

you can get to your house, but you cannot get all the way through - you will eventually come to a ROAD CLOSED sign



ROAD CLOSED

means

DO NOT ENTER!



The Most Livable
City in America

Wheelock Parkway Reconstruction

Parking

- The contractor will post NO PARKING signs everywhere
- If there **is no** activity on your block, you may park in front of your house
- If there *is* activity on your block, please leave contact information on the dashboard - the contractor would rather call you than a tow truck
- Police agree not to ticket unless requested by Public Works or the contractor





The Most Livable
City in America

Wheelock Parkway Reconstruction

Project Information and Updates

- You will receive a letter prior to the start of construction. Keep this for names and contact numbers.
- A flyer will be handed out a week before construction starts on your block. Check front doors for flyers.
- Onsite Public Works inspector: The project inspector should be your **first call** with questions or issues.
- Weekly updates will be posted to the city's website at www.stpaul.gov/construction.



The Most Livable
City in America

Wheelock Parkway Reconstruction

Placement of Class 5





The Most Livable
City in America

Wheelock Parkway Reconstruction

Placing Curb





The Most Livable
City in America

Wheelock Parkway Reconstruction

Final Grading





The Most Livable
City in America

Wheelock Parkway Reconstruction

Grading Boulevards





The Most Livable
City in America

Wheelock Parkway Reconstruction

Placing Asphalt Wear Course





The Most Livable
City in America

Wheelock Parkway Reconstruction

Before and After





City of Saint Paul
Office of Financial Services
Real Estate Section
Assessments



The Most Livable
City in America

Wheelock Parkway Reconstruction

Project Funding

Historically Street Improvement Bonds:

- 75% of the project by property taxes (paid by all taxpayers in the city)
- 25% Assessment to property owners

Assessment group convened (City Council requested) to evaluate and recommend:

- Funding sources
- Assessment policy



The Most Livable
City in America

Wheelock Parkway Reconstruction

Assessment Information

- Construction approved early 2018
- Assessments approved fall of 2018
- Bill is sent – 30 days to pay to avoid interest
- If not fully paid, annual installments automatically go onto property taxes
- Paid over 20 years with simple interest and a flat fee
- Senior citizen deferment
- Sanitary sewer and water connections, done by request, are separate assessments
- View/pay assessments at: www.stpaul.gov/assessments



The Most Livable
City in America

Wheelock Parkway Reconstruction

Questions?

Questions?





The Most Livable
City in America

Wheelock Parkway Reconstruction

Contact Names and Numbers

Project Engineer	Dan Haak	651-266-6084
------------------	----------	--------------

Parks & Recreation	Kathleen Anglo	651-266-6368
--------------------	----------------	--------------

Street Lighting	Ben Hawkins	651-266-6256
-----------------	-------------	--------------

Sewers	Richard Ekobena	651-266-6253
--------	-----------------	--------------

SPRWS (Water)	Ramsey Coronado	651-266-6294
---------------	-----------------	--------------

Forestry	Zach Jorgensen	651-632-2437
----------	----------------	--------------

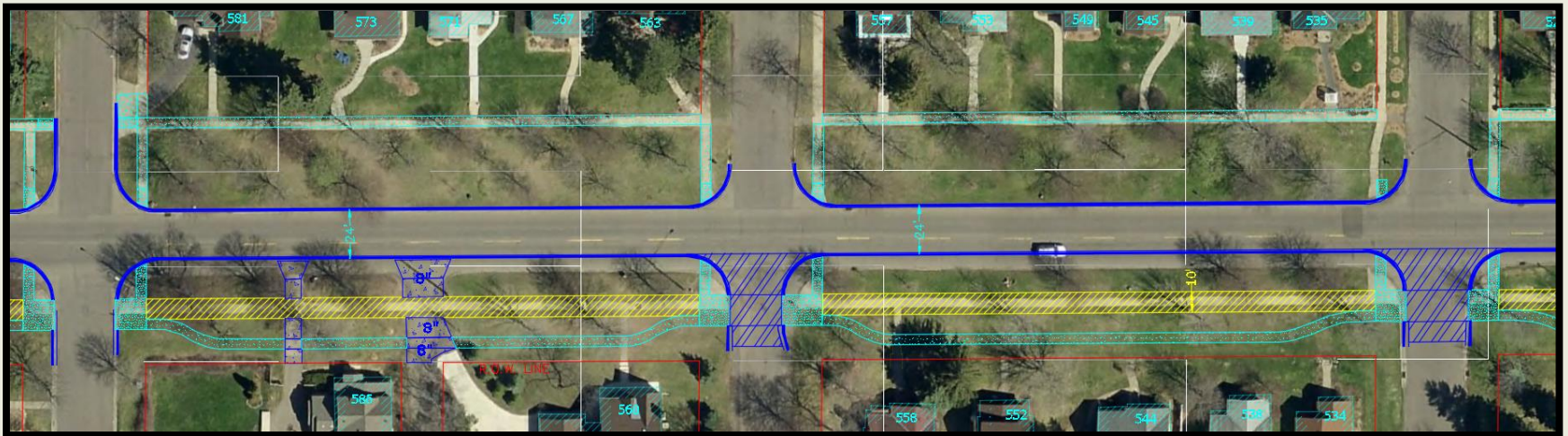
Real Estate Section	Lynn Moser	651-266-8858
---------------------	------------	--------------



The Most Livable
City in America

Wheelock Parkway Reconstruction

Danforth Street to Schletti Street

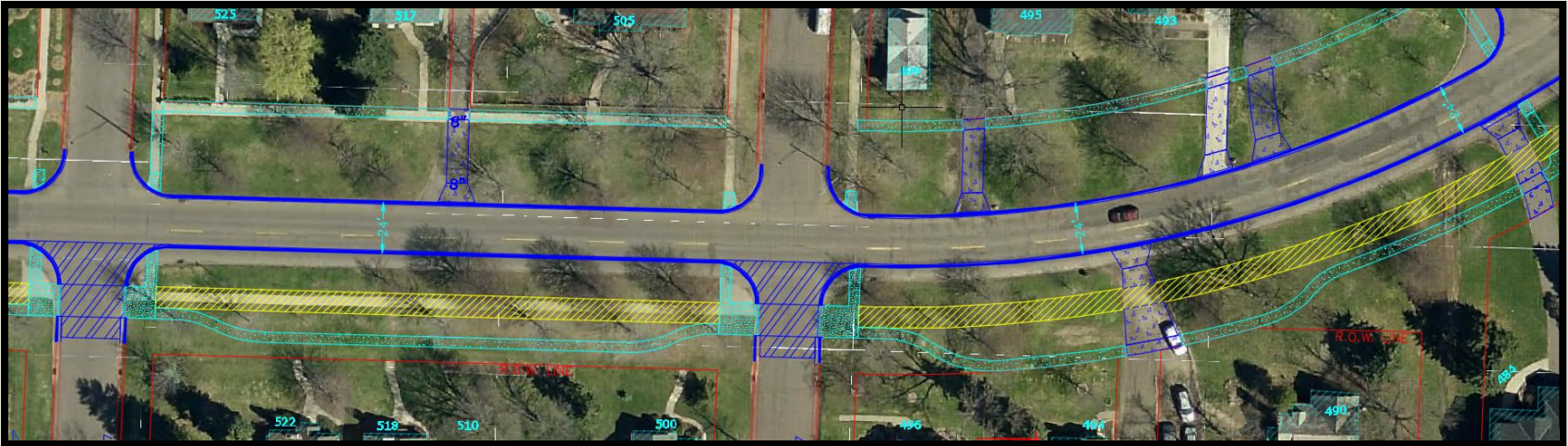




The Most Livable
City in America

Wheelock Parkway Reconstruction

Schletti Street to Cohansey Street

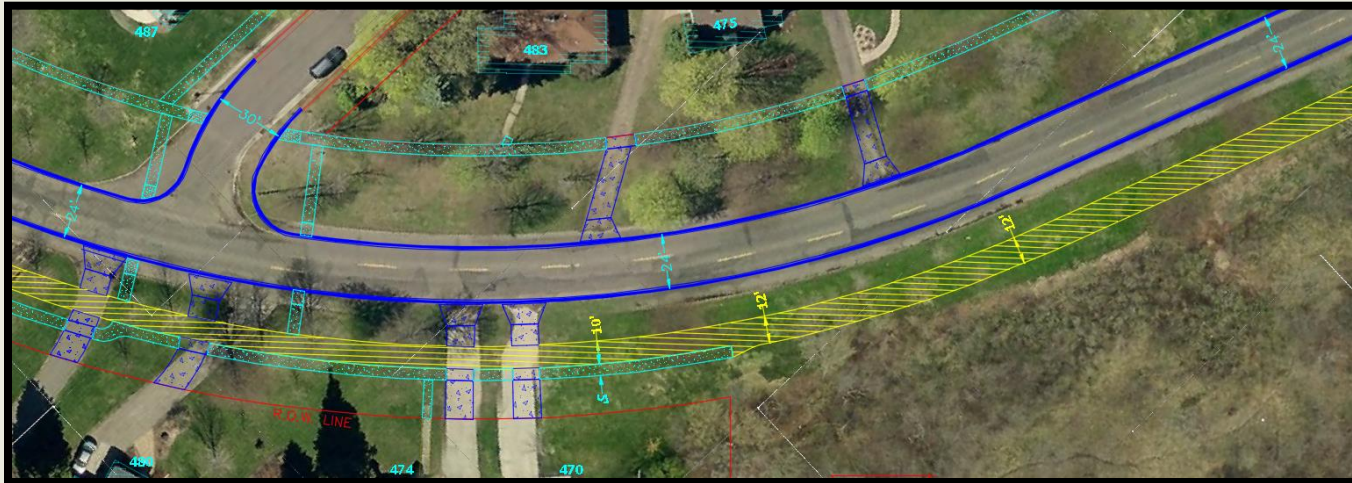




The Most Livable
City in America

Wheelock Parkway Reconstruction

Cohansey Street to Cottage Avenue

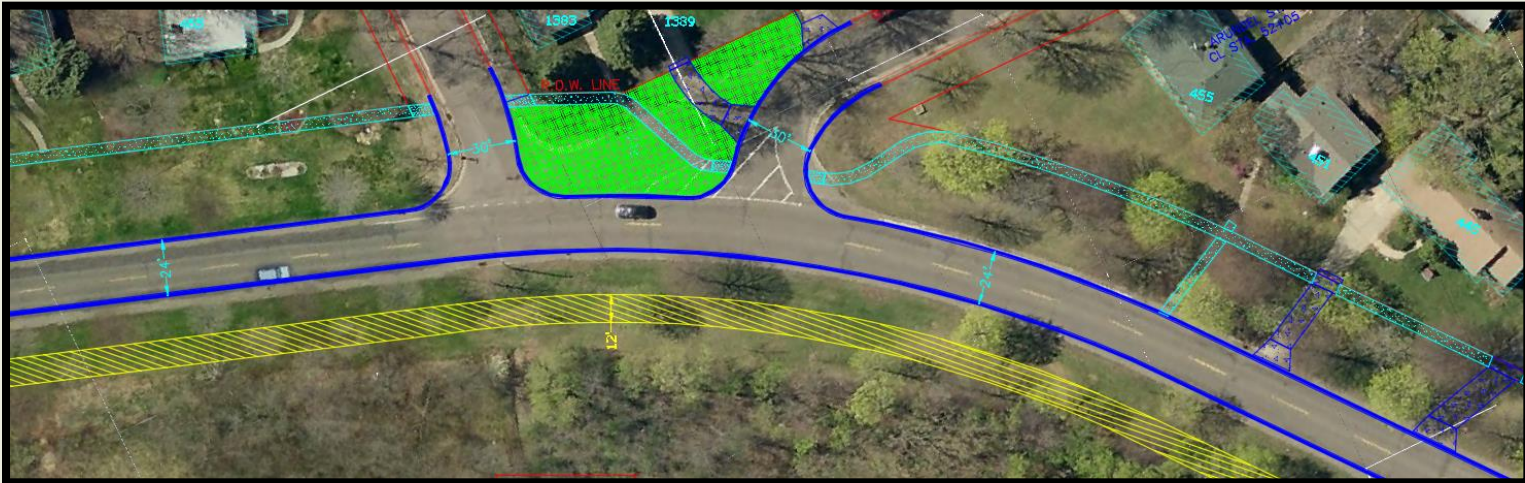




The Most Livable
City in America

Wheelock Parkway Reconstruction

Cottage Avenue to Arundel Street

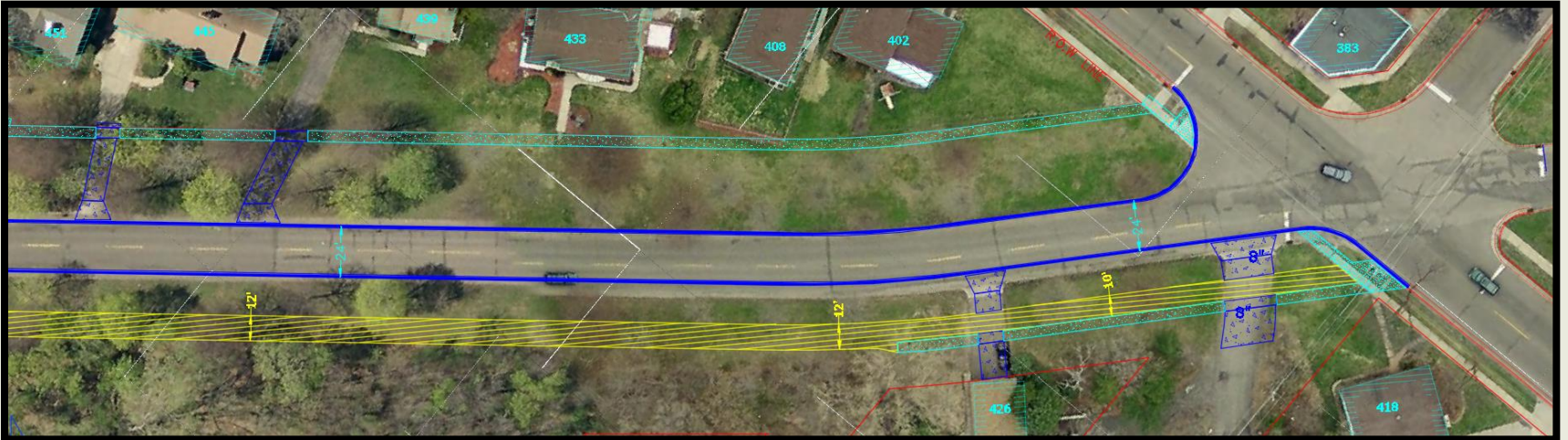




The Most Livable
City in America

Wheelock Parkway Reconstruction

Arundel Street to Western Avenue

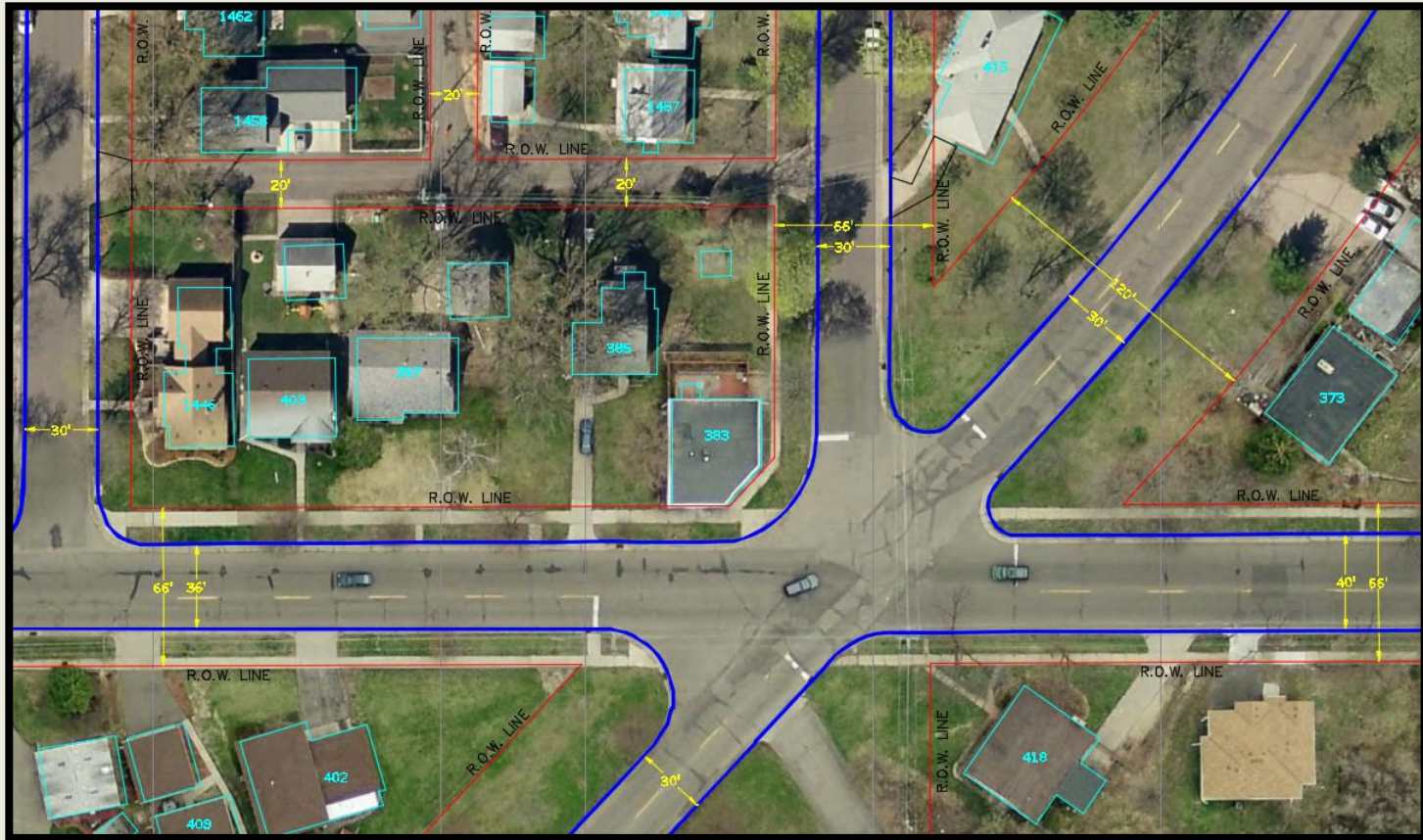




The Most Livable City in America

Wheelock Parkway Reconstruction

Intersection Redesign

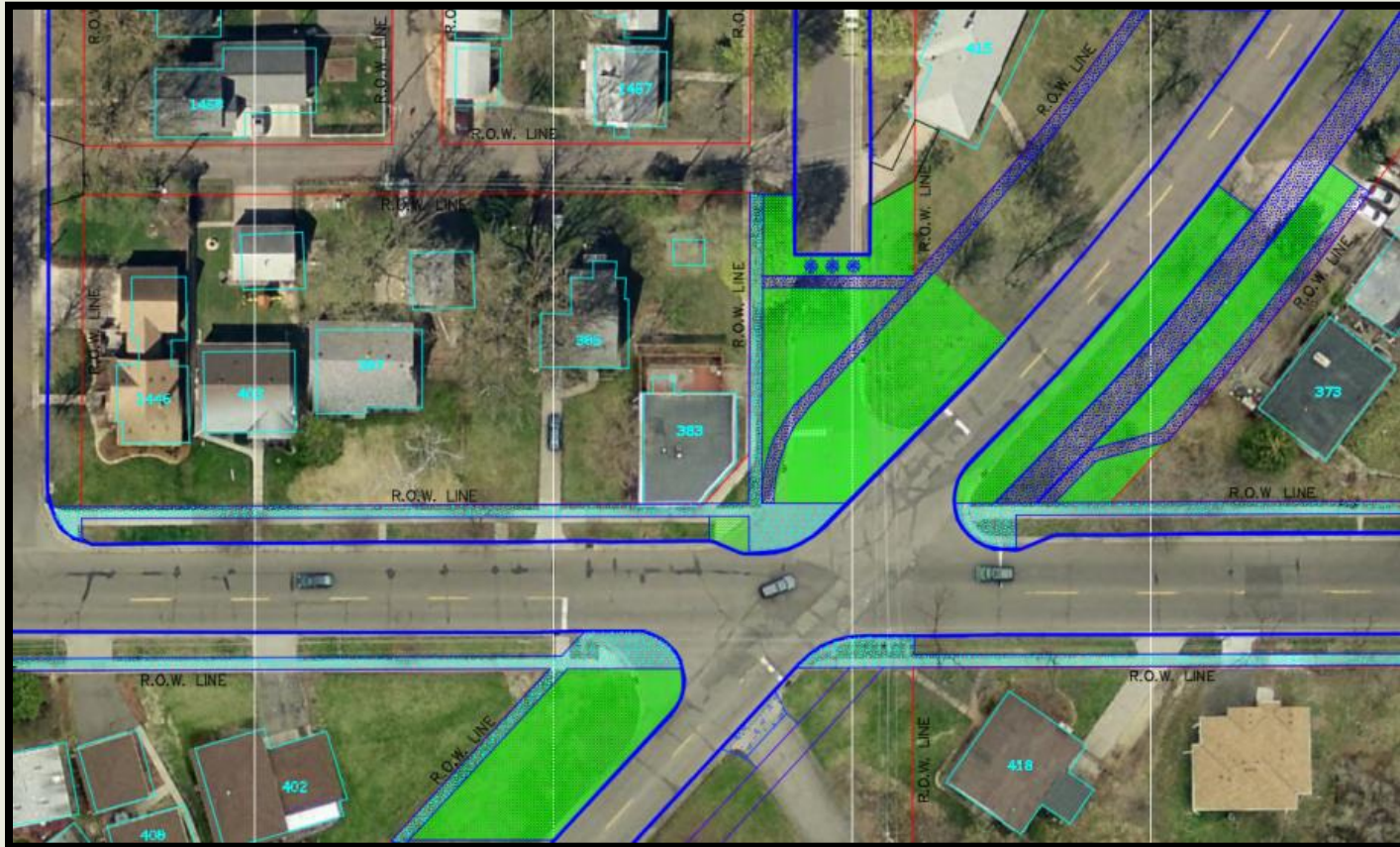




The Most Livable
City in America

Wheelock Parkway Reconstruction

Alternative #1

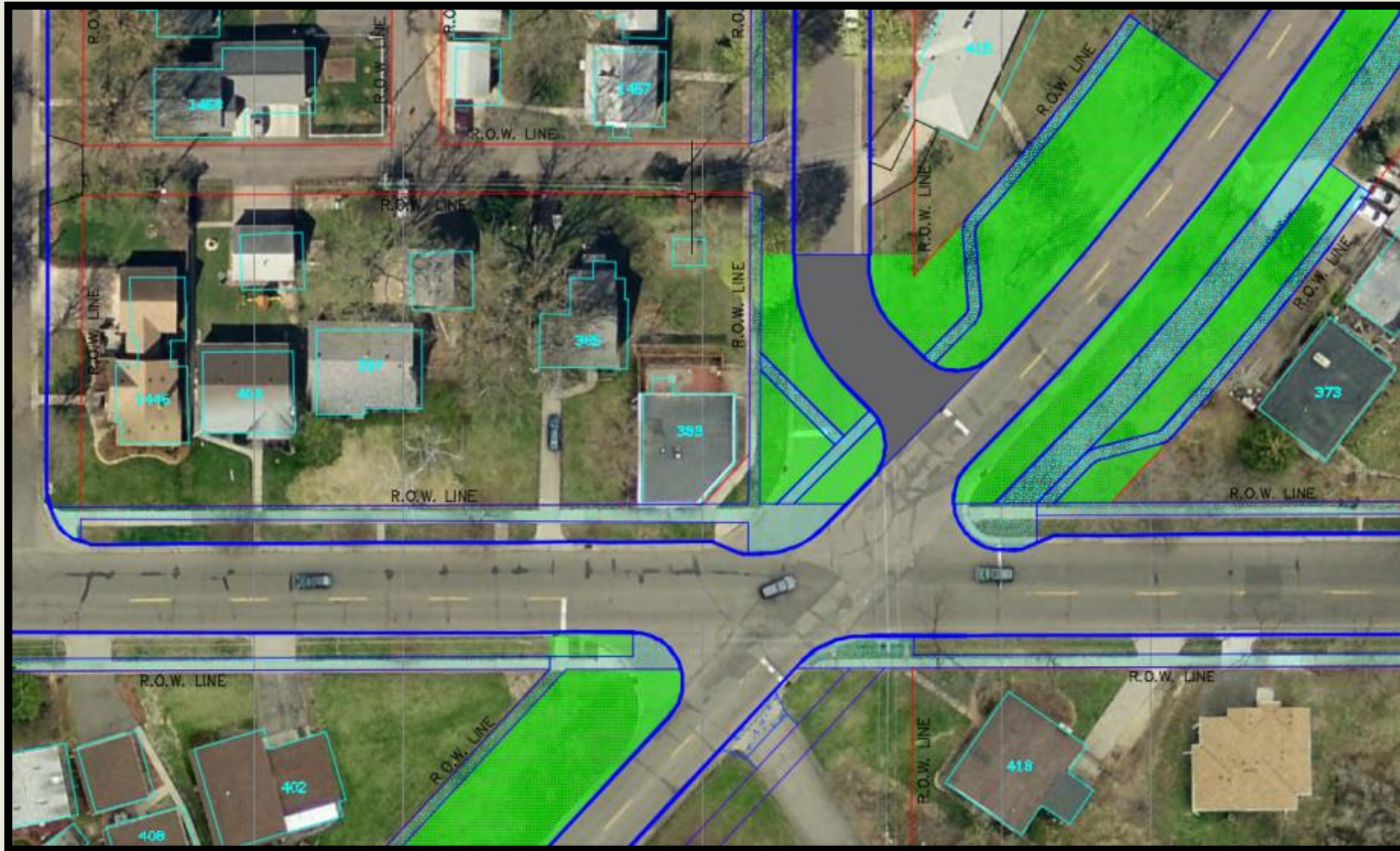




The Most Livable
City in America

Wheelock Parkway Reconstruction

Alternative #2



THANK
YOU!

for attending