

Introduction to SPRWS

SPRWS has been in the business of producing drinking water for more than 130 years.

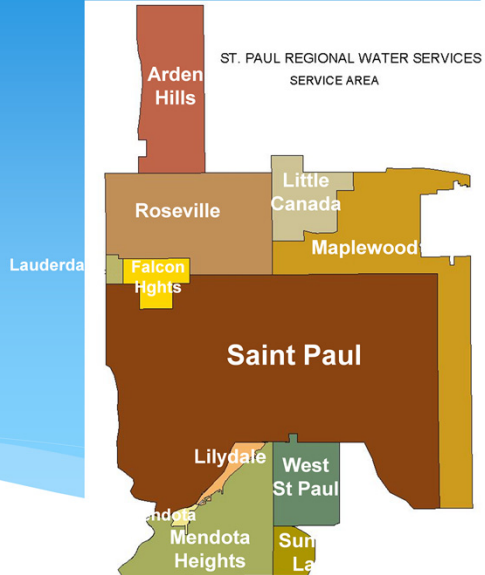


Lub Chaw Saib Xyuas Dej Havv Ib Cheeb Tsam Ntawm Saint Paul tau muab cov dej haus rau cov zos nyob havv lub nroog Saint Paul thiab peb cov zos nyob ib puag ncig los tau ntau lub xyoo lawm. Peb zoo siab txog qhov peb tau tsim ua dej uas raug tus nqi tsim nyog rau peb txhua tus neeg siv dej havv lub sijhawm yav dhau los.



Introduction to SPRWS

- Serve approximately 425,000 people
 - 9 retail municipalities
 - 2 wholesale municipalities
- 90,000 domestic accounts
- 4,000 commercial accounts



Peb xa dej thiab saib xyuas ntau txog 425,000 leej neeg ntawm lub sijhawm 24 teev hauv ib hnuv , 7 hnuv hauv ib asthiv. Nws muaj ntau dua 94,000 thaj chaw uas peb tau xa dej rau lawv. Nws muaj nyob rau hauv Saint Paul thiab 10 lub zos hauv ib puag ncig.

Introduction to SPRWS

We have 253 employees



Peb muaj cov neeg ua haujlwm 253 leeg los sib pab ua haujlwm saib xyuas kom xa dej rau sawd daws tau txhua hnuv mus tag hauv lub xyoo.

Where do we get our
drinking water?



SPRWS tau txais cov dej feem ntau los ntawm peb cov dej ntawm tus Niam Dej Mississippi uas los ntawm peb cov ncauj tso dej hauv Fridley, Minnesota.

Where do we get our drinking water?



Cov dej no raug nqus tawm los ntawm thaj chaw ntawd mus raws cov raj xa dej ntawm cov pa dej hia txwv dej tsuag uas nyob sab qaum teb ntawm Lub Nroog Ramsey. Cov dej ntws los ntawm cov pa dej hia txwv dej tsuag mus rau hauv peb cov chaw tso dej nyob hauv Vadnais Lake.

Where do we get our drinking water?



Rau ntawm qhov chaw ntawd, cov dej yuav ntwis mus rau hauv peb lub tsev tsim ua dej hauv Maplewood, Minnesota mus raws cov raj xa dej loj. Peb kuj maj 10 lub qhov dej nyob raws cov raj xa dej no uas peb tuaj yeem siv cov dej hauv qhov av tau yog thaum muaj neej siv dej ntau.

We treat the water

Softening

Filtration

Sedimentation

Disinfection



Rau ntawm Lub Tsev Tsim Dej McCarrons, peb tsim ua cov dej kom huv zoo thiab nyab xeeb rau koj los haus. Yuav ua tau li no ua ntej tshaj peb yuav tsum tso cov tshuaj khes mis los tshem cov txo av thiab tej yam khoom tsuas tawm hauv cov dej, lub tshuab lim dej yuav tshem tej yam txo tawm thiab thaum kawg yog tua kab mob hauv cov dej kom tsis txhob muaj tej yam kab mob bacteria tsis zoo lossis cov kab mob viruses tsis zoo.

We test the water

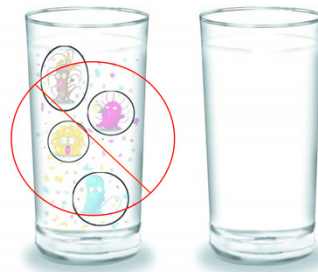
During the treatment process, we run dozens of tests on the water to ensure that the water meets all the standards for high quality drinking water. SPRWS meets all EPA standards for drinking water.



Peb lub tsev tshuaj xyuas dej yuav tshuaj xyuas cov dej ntau zaus kom paub meej tias tsim tau cov dej zoo haus. Peb cov tshuab ntsuas dej ntau lub yuav soj qab xyuas dej txhua txhua 24 teev hauv ib hnuv. Peb cov dej haus yuav tsum tau raws li cov qauv dej ntawm EPA.

Distribution System Water Quality

Once the water has been treated, it is ready to be sent out into the distribution system to homes and businesses. At that point, it is high quality drinking water that has had impurities removed. There is no lead in the water as it leaves our treatment plant.



Thaum cov dej tawm ntawm lub tsev tsim ua dej mus, nws yeej siv haus tau los ntawm koj tus kais dej. Cov dej zoo no yuav tsum tsis muaj tshuaj txhuas xyaws rau thaum tsim ua cov dej tiav.

Distribution System Water Quality

This water can be consumed straight from the tap with a high level of confidence in the quality of the water.



Tuaj yeem siv cov dej nyob ntawm koj tus kais dej tau yam tsis muaj kev txhawj xeeb dab tsi.

Tap water vs. bottled water

- * Why tap water?
 - ✓ Tap water has stricter standards than does bottled water
 - ✓ Tap water is delivered directly to your home- no need to go out to get it
 - ✓ Tap water is far less expensive

Muaj puas tsawg tus neeg nyob ntawm no yuav dej fwj lossis yuav dej los ntim siv? Nod yog qee lub laj thawj uas tej zaum koj yuav tau txiav txim txog tus kais dej.

Tus kais dej muaj ib daim ntawv lo qhia rau nruj dua cov taub dej

Tus kais dej raug xa ncaj qha tuaj rau tom koj lub tsev- tsis tas yuav mus nqa nws

Tus kais dej yeej tsis kim

Tap water vs. bottled water

For \$1.00, you can buy:



1 quart of
Bottled water

Vs

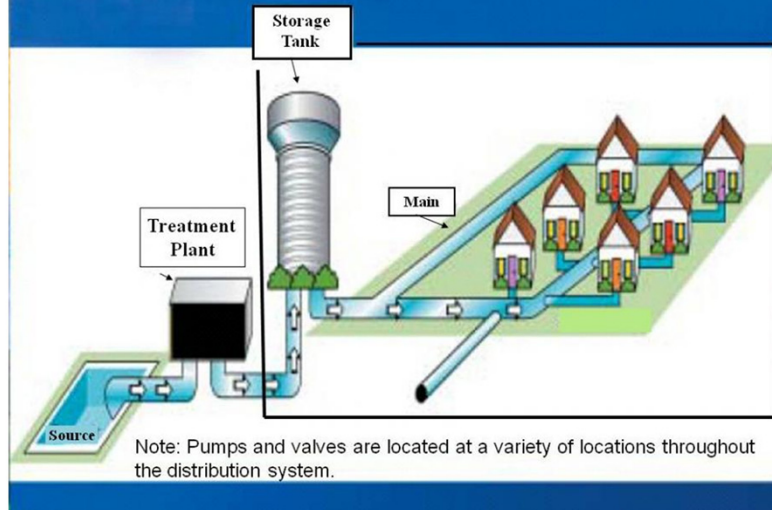
291 gallons
of tap water



Ib daus las yuav tau 291 gallons dej zoo yog siv tus kais dej zoo ntawm SPRWS. Nco ntsoov tias tus kais dej uas muaj kev ceev ruj ntau ntawd yuav tsum tau raws li cov dej fwj.

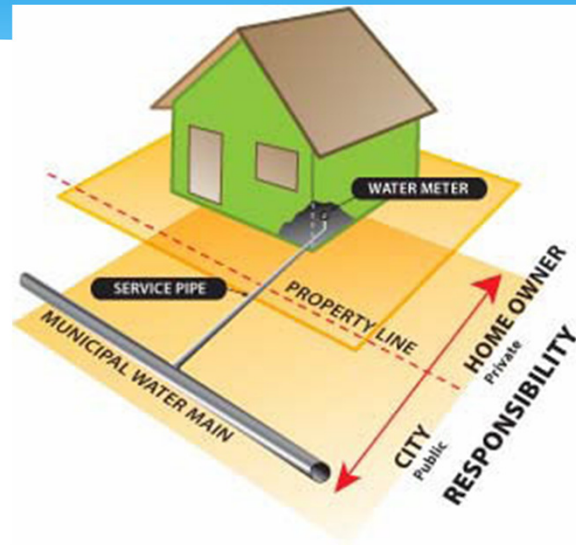
How water gets to your home

Water Supply Distribution System



Txhua cov dej siv haus yuav tsum raug tsim ua kom tau raws li cov qauv dej haus rau ntawm lub tsev tsim ua dej McCarrons. Dhau ntawd mam li nqus cov dej mus thiab xa mus rau txoj kev mus rau ntawm ib lub tsev rau dej siab lossis tej zaum yuav tso rau hauv cov raj xa dej nyob hauv qhov av.

How water gets to your home



Kiag thaum cov dej los ze rau ntawm koj lub tsev, nws yuav ntwis mus rau hauv lub tsev raws li cov raj txuas dej. Dhau ntawd nws raug ntsuas thaum koj siv. Kev txuas dej nkag hauv tsev yog los ntawm SPRWS thiab ib txhia yog los ntawm tus tswv tsev.

Home water services

We provide water to about 90,000 homes in Saint Paul and several surrounding communities.



Nws muaj ntau dua 90,000 lub tsev uas raug saib xyuas los ntawm peb.
Txhua lub chaw no tau xa dej haus mus rau ib lub tsev zuj zus.

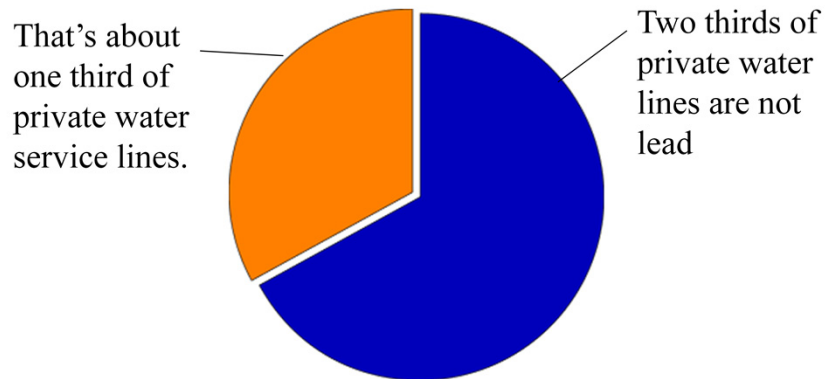
Home water services

Perhaps as many as 28,000 homes still have private water service lines that contain lead.



Kev txuas cov dej no raug tsim ua los tau ntau lub xyoo thiab siv tooj liab, hlau thiab txhuas ploom rau cov raj xa dej. Kev saib xyuas cov ntaub ntawv teev tseg tsis ntev los no pom tias muaj ntau dua 28,000 lub tsev tseem muaj tag nrho lossis ib txhais yog cov raj xa dej txhuas. Qhov no kuj yog ib feem ntawm lub chaw SPRWS lossis ib feem ntawm tus tswv tsev.

Home water services



Qhov no npaum li ib qho ntawm txhua txhua peb cov raj xa dej ntawm peb.

Why is lead an issue?

Lead can be harmful.

It can:

- impact normal physical and mental development in babies and young children
- cause deficits in the attention span, hearing, and learning abilities of children
- increase blood pressure in adults

Tshuaj txhuas tuaj yeem ua rau mob tau, tshwj xeeb mas yog cov menyuam yaus. Nws tuaj yeem cuam tshuam rau lub cev thiab kev loj hlob ntawm lub hlwb rau cov menyuam yaus thiab ua rau cov neeg laus muaj ntshav siab.

Remember:

Lead is not present in the drinking water leaving the plant.



Qhov tseem ceeb uas yuav tau nco tseg tias yuav tsum tsis txhob muaj cov tshuaj txhuas xyaws rau hauv cov dej haus thaum tawm mus ntawm lub tsev tsim ua dej.

Lead and the Distribution System

Lead gets in the water at the site of the home, from the water service, lead in fixtures or lead solder in the home.



Txawm li cas los xij, tshuaj txhuas tuaj yeem xyaws cov dej haus los ntawm cov raj xa dej txhuas, cov raj xa dej plooj tooj dag thiab plooj txhuas uas raug siv nqus dej rau tus kheej ntiag tug.

Lead and the Distribution System

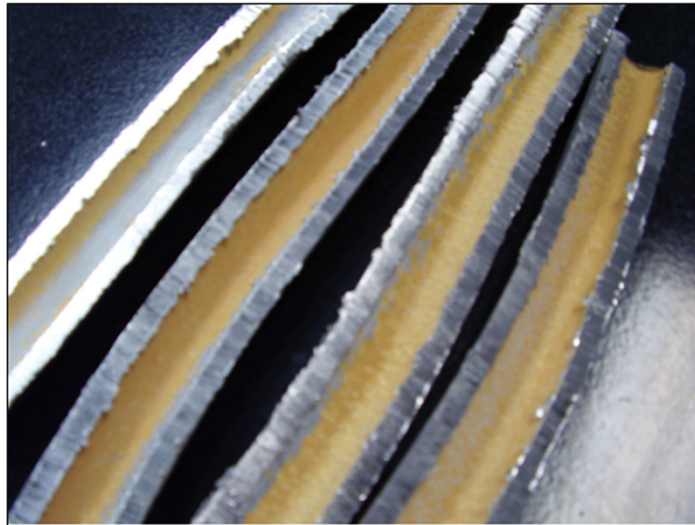
Many homes in the SPRWS distribution system were built before 1927, when lead stopped being used for water service lines. Those homes may still have lead water service lines.

To help control corrosion out in the distribution system, we adjust our pH and alkalinity at the water treatment plant.



Koj puas paub tias koj lub tsev raug tsim ua thaum twg? Cov tsev feem ntau nyob hauv Saint Paul uas raug tsim ua xyoo 1927 thiab ua ntej ntawd yeej muaj cov raj xa dej txhuas. Yuav pab txo kev yaig ntawm cov raj xa dej, lub chaw SPRWS tau tswj xyuas cov pH thiab cov tshuaj alkalinity ntawm cov dej uas peb tau xa rau sawd daws siv kom tau zoo.

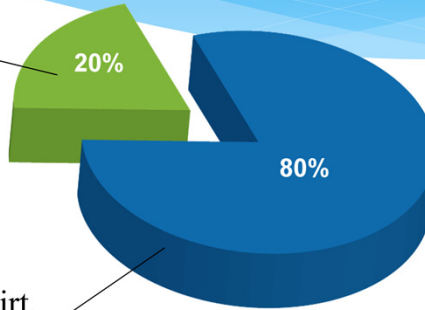
The proper pH and alkalinity help to create a coating on the inside of the lead water service lines, as seen below.



Qhov no yuav ua rau peb tsim ua tau cov dej tsis noj yam plooj sab hauv lub raj xa dej thiab txo tsis ua rau cov dej thiab lub raj xa dej sib chww ntau.

Important things to know about lead

EPA estimates that
20% of exposure to
lead comes from
water.



The remaining 80% of
exposure comes from
other sources, such as dirt,
lead paint, household dust,
pottery, and air.

Nws yog peb lub homphiaj txo kom txhob muaj cov tshuaj txhuas xyaws hauv koj cov dej haus. Qhov tseem ceeb uas yuav tau paub tias puas muaj lwm cov dej uas muaj tshuaj xyuas nyob rau hauv ib puag ncig ntawm peb. Tej no kuj suav txog cov tsos xim pleev qub, tej plua av thiab cov plua av hauv lub tsev. Raws li kev hais qhia rau ntawm EPA pom tias 20% ntawm kev raug tshuaj txhuas yog los ntawm cov dej, thiab 80% yog los ntawm lwm qhov chaw.

What is SPRWS doing?



* Replacing lead services in the street

* Educating customers

* Providing



- SPRWS replaces hundreds of lead services in the street each year. We have been doing this since the early 1980s and pay for half of the cost. We will replace the street flashing of any lead service replaced by the city. We provide information for interested customers.

Peb yuav ua li cas thiaj daws tau qhov teeb meem no?

Ua ntej tshaj, peb yuav tsum hloov cov raj xa dej txhuas raws kev. Txhua lub xyoo, peb hloov cov raj xa dej rau ntau pua lub tsev thiab peb tau ua li no los puag thaum xyoo 1980s lawm. Yog ib tus tswv tsev nws tus kheej hloov cov raj xa dej raws li nws tus kheej ntiag tug, peb yuav hloov cov ntawm peb tus kheej ntiag tug ib yam nkaus.

Peb tab tom qhia peb cov neeg qhua txog cov tshuaj txhuas xyaws cov dej haus.

Peb muab nyiaj txiag pab txhawb rau cov neeg nyob hauv Saint Paul txog kev qhia hloov lawv cov raj xa dej txhuas.

What we are doing

This year, we also started providing filter pitchers to those customers who have had a partial lead replacement. We include filters that will give six months of service.



Thaum lub sijhawm uas muaj cov tshuaj txhuas rau ntawm ib qho chaw los ntawm qhov chaw xa dej loj mus rau ntawm lub tshuab ntsuas dej, peb yuav qhia rau tus tswv tsev kom siv lub tshuab lim dej thiaj li tshem tau cov tshuaj txhuas tawm ntawm cov dej. Peb kuj muaj cov tshuab lim dej txaus rau sawd daws kom kav ntev txog rau lub hlis.

What you can do

Know if you have a lead service

You can call our engineering desk for help in determining if your home has lead service lines at 651-266-6270.



Koj yuav ua li cas thiaj li tuaj yeem txo kom txhob raug tshuaj txhuas ntau?

Ua ntej tshaj plaws, tshuaj xyuas seb koj puas muaj raj xa dej txhuas. Peb tuaj yeem pab koj tau qhov no. Txawm li cas los xij, tej zaum peb yuav tsis muaj cov ntaub ntauv teev tseg tias muaj yam dab tsi rau hauv tus kheej ntiag tug tej vaj tsev. Nyob rau qee kis, koj yuav tsum muaj ib tug neeg los pab koj tshuaj xyuas seb cov raj xa dej hauv koj lub tsev yog yam dab tsi.

What you can do

- Know if you have a lead service

If you have a copper service, that's great!
Your chances of having an issue with high
lead levels in your water are small!

Yog koj muaj cov raj xa dej tooj liab tag nrhorau hauv koj lub tsev, qhov yuav muaj cov tshuaj txhuas xyaws koj cov dej yuav muaj tsawg.

What you can do

- Replace your lead water service

- * The best way to reduce lead levels in your water is to replace your lead water service.
- * We can help with financing through our assessment program.

Yog koj muaj ib ya roj xa dej txhuas, qhov zoo tshaj plaws ces yuav tau hloov nws. Ib zaug ntxiv thiab, peb tuaj yeem pab nyiaj rau kis no thiab peb yuav hloov raws li peb feem yog koj hloov koj li ua ntej lawm.

What you can do

- ❑ Flush your water if it has not been used for hours

If you know that your home has a lead service line, you can let your water run for 3 -5 minutes any time the water has been sitting stagnant for several hours, such as overnight.



Yog koj xaiv tsis hloov koj cov raj xa dej, tso cov dej tawm los ntev li 3-5 feeb yog tsis muaj dej siv ntev li ob peb teev yuav yog qhov txo tau cov tshuaj txhuas xyaws koj cov dej tau zoo tshaj plaws.

What you can do

- ❑ Use a filter pitcher or other device to remove lead

You can purchase and use a water filter pitcher certified by the NSF International for lead removal to remove lead from your water before drinking or cooking.



Koj tuaj yeem yuav lub tshuab lim dej thiab siv ib lub tshuab lim dej raws li lub chaw NSF tau pom zoo yog lub tshuab lim dej uas tuaj yeem tshem tau cov tshuaj txhuas tawm hauv koj cov dej ua ntej yuav siv haus lossis siv ua zaub mov noj.

What you can do

Have your water tested for lead

If you are concerned about lead levels in your home, you can contact our water quality lab at 651-266-1635 to have a lead test conducted to determine the lead levels in your water.

We will conduct the tests and help you to interpret the results.



Lub chaw SPRWS muab kev pab ntsuas dej pub dawb yog koj txhawj xeeb txog cov tshuaj txhuas nyob hauv koj cov dej haus. Peb yuav xa qhov ntsuas tau los tuaj rau koj thiab pab qhia txog qhov ntsuas tau los.

What you can do

To summarize:

- * If you have a copper service, you probably have little to worry about with lead in your water.
- * If you have a lead service, replacing it is the best option.
- * If you can't replace it or don't want to, use a filter pitcher and/or flush your system to reduce lead levels.

We are always available to help if you have questions.

Peb ib txwm yeej khoom pab koj tas li yog koj muaj lus nug txog. Peb cov kws saib xyuas dej zoo, cov kws tsim ua dej thiab cov neeg saib xyuas neeg qhua yuav sib koom tes ua haujlwm los daws tej teeb meem no.

Final thoughts

We have been treating the water to reduce the possible leaching of lead into the drinking water from water service lines and lead solder since the 1990s.



Lub chaw SPRWS mob siab daws qhov teeb meem no los tau ntau caum xyoo lawm. Peb yuav sib koom tes ua haujlwm txuas mus ntxiv los pab txo kom koj txhob raug tshuaj txhuas xyaws koj cov dej haus.

Final thoughts

We continue to be in compliance with all EPA and Minnesota Department of Health regulations on drinking water.

Peb ua raws li txhua cov cai kav ntawm cov dej haus.

Final thoughts

Tap water is still the most:

- Economical
- Convenient
- Regulated

Source of drinking water

Tus kais dej yog yam tseem ceeb tshaj plaws:

- Pheej yig
- Siv tau yooj yim
- Raug raws li txoj cai

Qhov chaw ntawm cov dej haus

Final thoughts

We take pride in producing high quality drinking water to our customers and continue to do everything we can to extend the trust our customers have placed in us and in their drinking water.



Peb zoo siab uas tau tsim ua cov dej haus zoo rau peb cov neeg qhua thiab peb yuav ua txhua yam kom zoo raws li qhov peb tuaj yeem ua tau rau peb cov neeg qhua thiab kom lawv muaj kev ntseeg rau lawv cov dej haus.



Questions?

Nws muaj ntau cov ntaub ntawv nyob hauv on-line hais txog cov tshuaj txhuas. Koj tuaj yeem saib hauv phau ntawv qhia yog xav paub ntau ntiv.

Contact Information

Water quality lab
651-266-1635

Engineering desk
651-266-6270

Customer service
651-266-6350

Chav tshuaj xyuas dej zoo
651-266-1635

Chav tsim ua tej chaw ua dej
651-266-6270

Lub Chaw Saib Xyuas Neeg Qhua
651-266-6350