

Introduction to SPRWS

SPRWS has been in the business of producing drinking water for more than 130 years.

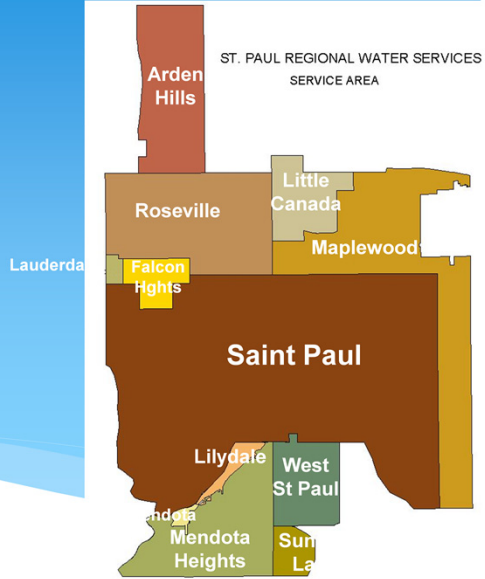


စူးဖီ(လ)ဟိန်ကဝီထံတော်မၤစၢၤတဖၣ် (**Saint Paul Regional Water Services**) ဟ့ၣ်လီၤထံအိဆူ **Saint Paul** ဒီးပဝ်ခိၣ်ဃၢၤဝးဝးပုၤတဝၢတဖၣ်လၢအါ နံၣ်အဂီၢ်လံၣ်န့ၣ်လီၤ. ပဟ်ကဖၢလၢပသးလၢပအိၣ်ဒီးတၢ်စံၣ်စီၤ လၢပဟ့ၣ်လီၤထံလၢတၢ်နၣ် န့ၣ်အိၤသ့ဒီးတၢ်မၤစၢၤဆူပပုၤပုၤစူးကါတၢ်ဖိခဲလၢၢ်အအိၣ်ဒီးတၢ်အပူၤလၢအကြၢးဝဲဘၣ်ဝဲ န့ၣ်လီၤ.



Introduction to SPRWS

- Serve approximately 425,000 people
 - 9 retail municipalities
 - 2 wholesale municipalities
- 90,000 domestic accounts
- 4,000 commercial accounts



ပဟ့ၣ်လီၤထံၣ်ဒီးတၢ်မၤစၢၤတဖၣ်ဆူ ပှၤ ၄၂၅,၀၀၀ ယၣ်ယၣ်လၢ ၂၄ န့ၣ်ရံၣ် တသီ, ၇ သီ လၢတနွံအတီၢ်ပူၤန့ၣ်လီၤ. ပမၤစၢၤပှၤနီၢ်တဂၤအတၢ်လီၢ်တၢ်ကျဲအါန့ၢ် ၉၄,၀၀၀ န့ၣ်လီၤ. တၢ်သ့ၣ်တဖၣ်အံၤအိၣ်သ့ၣ်လီၤအသးလၢ **Saint Paul** အပူၤဒီးအခိၣ်အယၢၤဝးဝး န့ၣ် ပှၤတတၢ်အိၣ် ၁၀ န့ၣ်န့ၣ်လီၤ.

Introduction to SPRWS

We have 253 employees



ပပှမးတၢ်ဖိအိၣ် ၂၅၃ ဂၤလၢအမၤသကိးတၢ်တပူၤယီ လၢကမၤလီၤတၢ် ထံတၢ်မၤစၢၤလၢပ စူးကၢအိၣ်ကိးမုၢ်နံၤဒဲးလၢတနံၣ်အတီၢ်ပူၤလၢတအိၣ်ဒီးတၢ်မၤတံၢ်တၢ်အဂီၢ်န့ၣ်လီၤ.

Where do we get our drinking water?



SPRWS ဒီးန့ၢ်ပထံအါမးလာ မံးစံးစပံထံကျိ (Mississippi River) လာ ပတၢ်ဟံးန့ၢ်ဟ်ကီၤဃာ်ထံအလီၢ် (intakes) လာဖြးလ့ၣ် (Fridley), မံၣ်နံၣ်စိထံၣ်အပူၤန့ၣ်လီၤ.

Where do we get our drinking water?



တၢ်ဆူးထူးထီၣ်ထံလၢ တၢ်လီၢ်တၢ်ကျဲၣ်ဖျိ ထံပီၤဘိဖးဒိၣ်ဆူၣ်ရၣ်ကီၣ်တဖၣ်လၢအအိၣ်
လၢ ရဲ(မ)စံၣ်ခိထံၣ် (Ramsey County) ကလံၤစိးတကပၤအပူၤန့ၣ်လီၤ. ထံယွၤလီၤခိ
ဖျိ ရၣ်ကီၣ်တဖၣ်အံၤ ဆူ ပတၢ်ဟံးန့ၣ်ဟံးကီၤဃၢ်ထံအလီၢ် (intakes) လၢ ဘးနဲး(စ)ရၣ်
ကီၣ် (Vadnais Lake) အပူၤန့ၣ်လီၤ.

Where do we get our drinking water?



ဖဲန့ဉ်, ထံယွၤလီၤဆူပတ်ၢ်မၤကဆိထံဝဲးဖိကဟ့ဉ်တၢ်မၤလီၢ် (treatment plant) လၢ မ့
ပၢဉ်ဂူး (Maplewood) အပူၤ, မံဉ်န့ဉ်စိထံဉ် ခိဖျိထံပိၤဘိဖးဒိဉ်န့ဉ်လီၤ. ပထံပူၤအိဉ်စ့ၢ်
ကိးအပူၤ ၁၀ ဒီးထံပိၤဘိတဖၣ်အံၤဖဲပစူးကိထံလၢအဟဲလၢဟီဉ်ခိဉ်လၢအံၤသ့ဖဲထံအိဉ်
ဟဲအလီၢ်မ့ၢ်လိဉ်ဟဲထီဉ်အခါန့ဉ်လီၤ.

We treat the water

Softening

Filtration

Sedimentation

Disinfection



ဖဲ McCarrons တၢ်မၤကဆိထံစဲးဖီကဟံၣ်တၢ်မၤလီၢ် (treatment plant) ပမၤကဆိထံစိးမၤလီၢ်တၢ်လၢအိၣ်ဒီးအကံၢ်အစီၣ်ဂ့ၤဒီးပူၤဖျဲးလၢပကအိအီၤအဂီၢ်န့ၣ်လီၤ. လၢပကမၤတၢ်အံၤအဂီၢ် အဆိကတၢ်ပထၢန့ၣ်လီၤကံၤတဖၣ်လၢကမၤဟါမၢ်ကွံာ်စၢ်ထးဒီးတၢ်ဘၣ်အဘၣ်သီလၢအဟဲပၣ်ဒီးထံ, ပှံၢ်ထံလၢကမၤဟါမၢ်ကွံာ်တၢ်အယံၣ်အမူး (finer particle) ဒီးလၢခံကတၢ်, ပမၤသံတၢ်ယူးတၢ်ယၢ်လၢထံကျါ လၢကမၤလီၢ်တၢ် တၢ်လၢကမၤဘၣ်ဒိဆါပုၤဒ်အမ့ၢ် ဘဲးထံရံၤယါ မ့တမ့ၢ် တၢ်ယူးတၢ်ယၢ်တဖၣ်တပၣ်ယုာ်တဂ့ၤအဂီၢ်န့ၣ်လီၤ.

We test the water

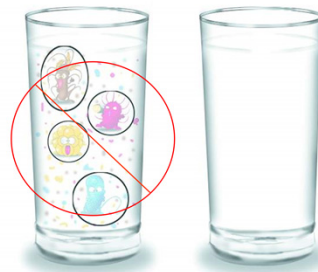
During the treatment process, we run dozens of tests on the water to ensure that the water meets all the standards for high quality drinking water. SPRWS meets all EPA standards for drinking water.



ပတ်မီကွာ်ဒေးလတ်အုန်ကီအီ၊ မဲတ်မီကွာ်အါဘျီ လာကမလီတံထံန့အကံအ
စီတုထီထီဘးဒီးထံအီကံစီအတီပတီန့လီ။ ပတ်ဟ်ပနီအတက့အါ
မး (parameters) ဖံတ်မတ် တနံ ၂၄ န့ရံန့လီ။ ပထံအကံအစီတုထီထီ
ဘးဒီး EPA အတ်ဟ်ပနီထံအီအတီပတီတဖုခဲလင်လီ။

Distribution System Water Quality

Once the water has been treated, it is ready to be sent out into the distribution system to homes and businesses. At that point, it is high quality drinking water that has had impurities removed. There is no lead in the water as it leaves our treatment plant.



ဖဲထံလဲၤခိက် တၢ်မၤကဆိထံစးဖီကဟ်တၢ်မၤလီၢ် (treatment plant) န့ၣ် နအိးထီၣ်သူ အီၤလၢနထံပီၤနိးသ့လံန့ၣ်လီၤ. ထံအကံၢ်အစီအိၣ်အါမးအံၤ တပၣ်ယုၣ်ဒီးစၢ်ပှ်ဖဲတၢ်မၤ ကဆိအီၤဝံၤအလီၢ်ခံဘၣ်န့ၣ်လီၤ.

Distribution System Water Quality

This water can be consumed straight from the tap with a high level of confidence in the quality of the water.



ထံဖဲနထံပီနိးန့ၣ်နစူးကါအီလၢတၢ်န့ၣ်အပူၤလၢလၢပွဲၤသ့လံန့ၣ်လီၤ.

Tap water vs. bottled water

* Why tap water?

- ✓ Tap water has stricter standards than does bottled water
- ✓ Tap water is delivered directly to your home- no need to go out to get it
- ✓ Tap water is far less expensive

ဖဲအံၤပုၤအီထံပလီၣ်ဂၤ၊ မ့တမ့ၢ် ပုၤထံအီဖးဒိၣ်လၢစတီအပူၤညီၣ်ဂ့ၢ်ဂၤလဲၣ်.

ဖဲအံၤမ့ၢ်ဝဲတၢ်ဂ့ၢ်တနီၤလၢနကအဲၣ်ဒီးစူးကါထံလၢအဟဲလၢထံပီၤနိးန့ၣ်လီၤ.

ထံဟဲလၢထံပီၤနိးအိၣ်ဒီးတၢ်ပၤပနီၣ်အတီၤပတီၢ်လၢတၢ်ဖိၣ်ပံးအီၤအါန့ၢ်ဒံးထံပလီၣ်န့ၣ်လီၤ.

ထံဟဲလၢထံပီၤနိးန့ၣ်တၢ်ဟ့ၣ်လီၤအီၤဆူနဟံၣ်ပီၤလီၤလီၤ- တလိၣ်နလဲၤဟးထီၣ်လၢတၢ်ချၢ
ဒီးမၤန့ၢ်အီၤဘၣ်.

ထံဟဲလၢထံပီၤနိးန့ၣ်အပူၤဘၣ်ဒိၣ်မးန့ၣ်လီၤ.

Tap water vs. bottled water

For \$1.00, you can buy:



1 quart of
Bottled water

Vs

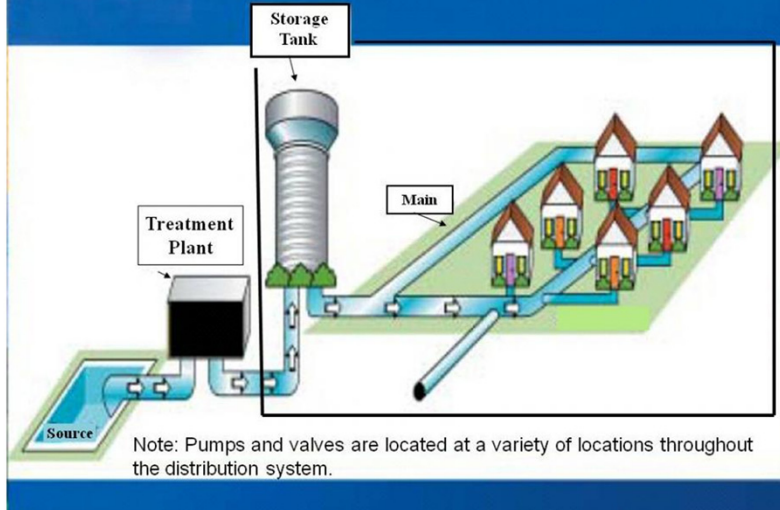
291 gallons
of tap water



တဒီလၢန့ၣ်ပူၤ **SPRWS** ထံၣ်လၢထံၣ်ပီၤနိး လၢအိၣ်ဒီးအကံၢ်အစီအါမး ၂၉၁ ကါလၢန့ၣ်လီၤ. သ့ၣ်နီၣ်ထီၣ်လၢထံၣ်ပီၤနိးန့ၣ်အိၣ်ဒီးတၢ်ပၣ်ပနီၣ်အတီၤပတီၢ်လၢတၢ်ဖီၣ်ယံးအီၤန့ၣ် ကဘၣ်တုၤထီၣ်ထီၣ်ဘးဒီး ထံၣ်ပီၤအတီၤပတီၢ်လၢတၢ်ပၣ်ပနီၣ်အီၤန့ၣ်လီၤ.

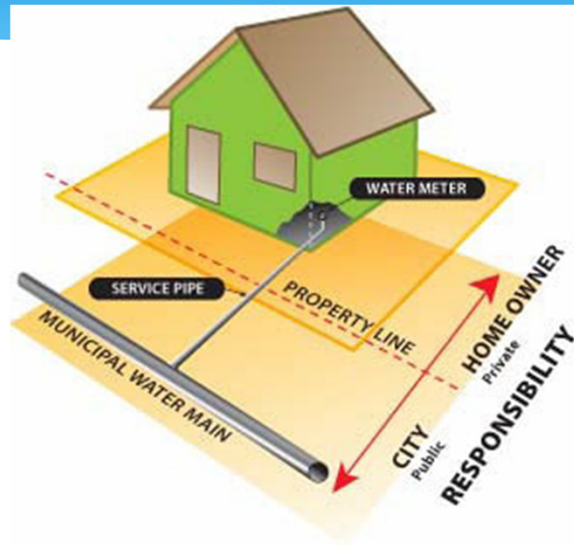
How water gets to your home

Water Supply Distribution System



ထံခဲလၢၣ်န့ၣ်တၢ်မၤကဆိကဲထီၣ်အီၤဆူတၢ်ဟံပနီၣ်ထံအီၤအတီၤပတီၢ် ဝဲ McCarrons တၢ်မၤကဆိထံခဲးဖိကဟံၣ်တၢ်မၤလီၢ် (treatment plant) န့ၣ်လီၤ. ဝံၤဒီးတၢ်ဆူးထူးထီၣ်ထံခိးဘၣ်သ့ၣ်သ့ၣ်တၢ်ကရၤလီၤအီၤဆူန့ၣ်ကျဲၣ်မုၢ်အပူၤ ဒိဖျိထံပျီၣ် မ့တမ့ၢ် ကအိၣ်တ့ၢ်လၢပဟီၣ်လၢထံပီၤဘိတဖၣ်အပူၤဒီးတဘိဝဲန့ၣ်လီၤ.

How water gets to your home



ဖဲထံအိၣ်ဘူးဒီးနဟံၣ်န့ၣ်, တၢ်ကရၢလီၤအီၤဆူဟံၣ်ယီၤ ခိဖျိ ထံတၢ်မၤစၢၤတၢ်ဘျးစဲန့ၣ် လီၤ. ဝံၤဒီးတၢ်ကထိၣ်အီၤဒီးတၢ်ကမၤအီၤလၢနစူးကါအီၤကသ့န့ၣ်လီၤ. ထံတၢ်မၤစၢၤတၢ်ဘျးစဲန့ၣ် SPRWS ပၤဘၣ်အီၤတနီၤဒီး တနီၤန့ၣ်ဟံၣ်ကစၢ်ပၤဝဲဒၣ်န့ၣ်လီၤ.

Home water services

We provide water to about 90,000 homes in Saint Paul and several surrounding communities.



လၢပတၢ်မၤအကျဲသနူအပူၤ ပှၤအိၣ်ဆိးလၢအစူးကါတၢ်မၤစၢၤအိၣ်ဝဲ ၉၀,၀၀၀ ဘျဲၣ်န့ၣ်လီၤ. တၢ်ဟ့ၣ်လီၤထံအိၣ်ဆူဟံၣ်တဖျၢၣ်ဘၣ်တဖျၢၣ်စ့ၣ်စ့ၣ်အအိၣ်န့ၣ်လီၤ.

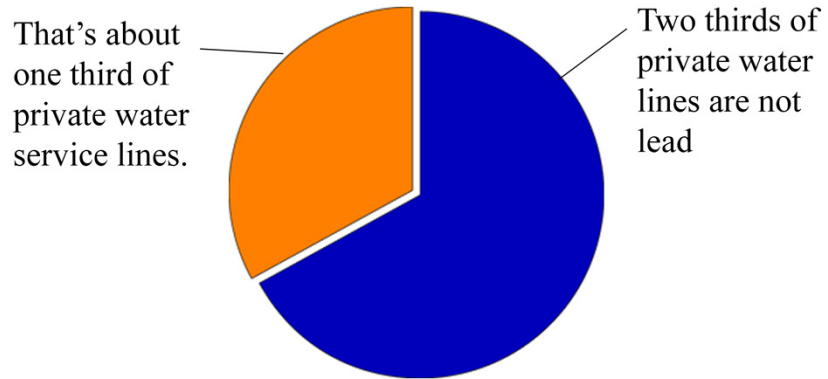
Home water services

Perhaps as many as 28,000 homes still have private water service lines that contain lead.



ထံတော်မၤစၢၤတၢ်ဘျးဝဲတဖၣ်အံၤ ဘၣ်တၢ်ဘျးအိၤလၢတီၢ်ဘီၤလၢအကံၢ်အစီၣ်ဂ့ၤဂ့ၤ, ထးခိပနံၣ်
ဒီးစၢၢ်ပုၣ်တၢ်ပိးတၢ်လီၤတဖၣ်အိၣ်လၢအနံၣ်တဖၣ်အနံၣ်လံၣ်န့ၣ်လီၤ. တၢ်ကွၢ်ကဒါက့ၤပတၢ်
ကွဲးနီၣ်ကွဲးပါဖဲအပူၤကွံၣ် ဖုးနဲၣ်ဟံၣ်ဖျါထီၣ်လၢ ဟံၣ်ခိၣ် ၂၈,၀၀၀ ဖျါၣ်ယၣ်ယၣ်န့ၣ် တၢ်မၤ
စၢၤတၢ်ဘျးဝဲန့ၣ်ကအိၣ်ဒီး စၢၢ်ပုၣ်တနီၤ မ့တမ့ၢ် ခဲလၢၢ်ဒံးန့ၣ်လီၤ. တၢ်အံၤကမ့ၢ်ဝဲတၢ်အ
ကူၢ်လၢ SPRWS ပၤဝဲ မ့တမ့ၢ် ဟံၣ်ကစၢ်ပၤဝဲတၢ်ဘျးဝဲအံၤတနီၤန့ၣ်လီၤ.

Home water services



တၢ်အံၤထံသိးတုၤသိးယၢ်ယၢ်ဒီး ပတၢ်မၤစၢၤအကျိၤ ၁ လၢ ၃ အကျိၤစုၣ်စုၣ်န့ၣ်လီၤ.

Why is lead an issue?

Lead can be harmful.

It can:

- impact normal physical and mental development in babies and young children
- cause deficits in the attention span, hearing, and learning abilities of children
- increase blood pressure in adults

စက်မှုနှင့်မာဘန်ဒီဆိတ်သု, လီဆီဒ်ဖိသန်ဆံးတဖန်နှင့်လီ. တ်အံမာဘန်ဒီပုဖိသန်
လါအဒိန်ထိန်တဖန်အနီခိကွန်ဂီဒီးသးဂွန်ဝိအတ်ဒိန်ထိန်တဖန် ဒီးမအါထိန်သွန်ဂံဆိန်
အါထိန်လါပုသးပွန်တဖန်အပူနှင့်လီ.

Remember:

Lead is not present in the drinking water leaving the plant.



တၢ်အံၤအရူၤဒိၣ်လၢတၢ်ကဟ်သ့ၣ်ဟ်သးလၢ စၢ်ပှ်န့ၣ်တအိၣ်လၢထံအီၤအပူၤ ဖဲလဲၤဒီဖျိ တၢ်မၤကဆိထံဖဲးဖိကဟ်တၢ်မၤလီၢ် (treatment plant) ဘၣ်န့ၣ်လီၤ.

Lead and the Distribution System

Lead gets in the water at the site of the home, from the water service, lead in fixtures or lead solder in the home.

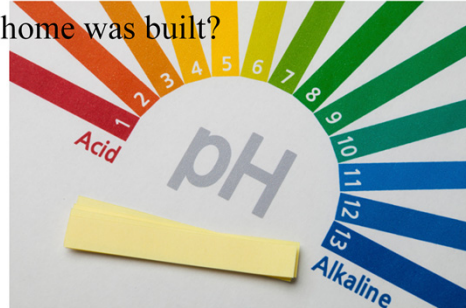


ဘၣ်ဆၣ်သနၣ်က့, စၢ်ပှၣ်တဖၣ်ဟဲန့ၣ်လီၤဆူထံအီၤအပူၤသ့ခီဖျိ စၢ်ပှၣ်တၢ်မၤစၢၤအကျိၤတဖၣ်, တီၢ်ဘိထးပဝံၣ်ဒီးထံပီၤနိး (brass fitting and fixtures) တဖၣ်ဒီးစၢ်ပှၣ်ဝါပီးလီ (brass fixtures) လၢတၢ်စူးကါညီၣ်နီၤအီၤလၢ နီၢ်တဂၤတၢ်ကျဲၤထံတၢ်မၤအကျိၤအကျဲတဖၣ် (private plumbing systems) အပူၤန့ၣ်လီၤ.

Lead and the Distribution System

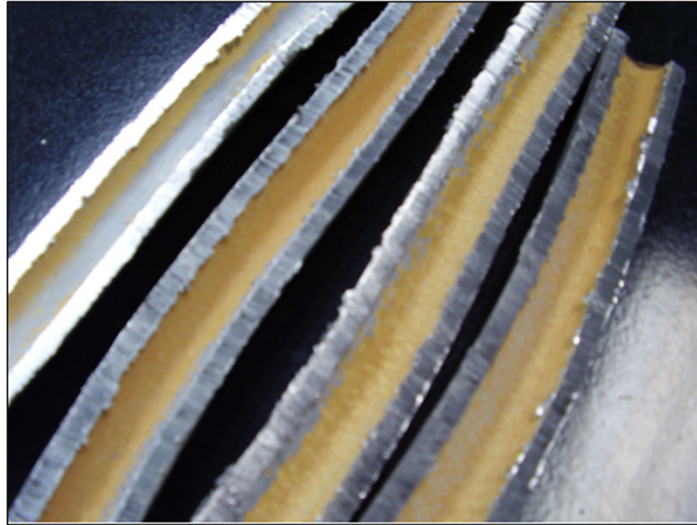
Many homes in the SPRWS distribution system were built before 1927, when lead stopped being used for water service lines. Those homes may still have lead water service lines.

To help control corrosion out in the distribution system, we adjust our pH and alkalinity at the water treatment plant.



နဟံဉ်ဘျီအသးအခါဖဲလဲဉ်န့ဉ်နသ့ဉ်ညါဧါ. ဟံဉ်လၢ အပူၤအါတက့ၢ်တဖဉ်န့ဉ် တၢ်ဘျီအီၤလၢ ၁၉၂၇ ဇီးတချုးနံဉ်အဝဲန့ဉ်အပူၤ, အိဉ်ဇီးထံတၢ်မၤစၢၤအကျိၤတဖဉ်လၢတၢ်မၤအီၤဇီးစၢ်ပုၤဝါတၢ်ပိးတၢ်လီတဖဉ်န့ဉ်လီၤ. လၢကမၤစၢၤတၢ်ဟံပနီဉ်တၢ်ပျံးထံအပတီၢ်လၢအအိဉ်ဖျါလၢတၢ်မၤအကျိၤအကျဲအပူၤအဂီၢ်, SPRWS ပၤယၢ်ဝဲ ထံအ pH ဇီး အဲ(လ)ခ နံဉ် (alkalinity) အပတီၢ်ယံးယံးလၢပထးထီဉ်ရၤလီၤအီၤန့ဉ်လီၤ.

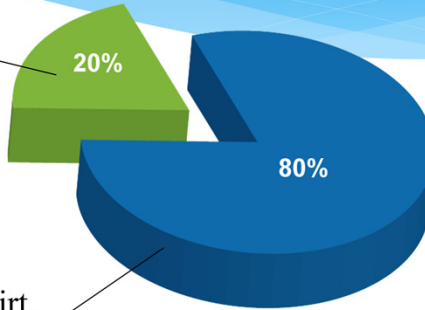
The proper pH and alkalinity help to create a coating on the inside of the lead water service lines, as seen below.



တၢ်အံၤပျဲပှၤလၢပကထုးထီၣ်ထံလၢ အဖူးအိၣ်ထီၣ် တၢ်ကျါၢ်ဘၢဘူဘူဖိလၢထံပိၤဘိအအိ ပူၤတကပၤခဲလၢၢ် လၢပတၢ်မၤအကျိၤအကျဲအပူၤ လၢကဟ်ပနီၣ်တၢ်ဘၣ်ခွဲးဘၣ်ခွါလၢထံ ဇီးထံဇီးထံပိၤဘိပိးလိတဖၣ်အဘၢၣ်စၢၤန့ၣ်လီၤ.

Important things to know about lead

EPA estimates that 20% of exposure to lead comes from water.



The remaining 80% of exposure comes from other sources, such as dirt, lead paint, household dust, pottery, and air.

တၢ်အံၤမ့ၢ်ဝဲပတၢ်ပညိၣ်ဖီတၢ်လၢပကဟ်ပနီၣ် စၢ်ပှၢ်အနီၣ်ဂံၢ်လၢအအိၣ်လၢနထံအီၤအပူၤ န့ၣ်လီၤ. တၢ်အံၤအရ့ၣ်ဒိၣ်လၢနကသ့ၣ်ညါတၢ်လီၤအဂၤလၢစၢ်ပှၢ်အိၣ်ဝဲလၢပန့ၣ်ဆၢၣ်ခိၣ်ယၢၤ အပူၤန့ၣ်လီၤ. တၢ်တဖၣ်အံၤပၣ်ယုၣ်ဒီး တၢ်ခဲၣ်လွဲၢ်အလီၢ်လံၤ, တၢ်ဘၣ်အဘၣ်သီဒီးဟံၣ်ယီၤ ပီးလီၤတၢ်ကမ့ၢ်တဖၣ်န့ၣ်လီၤ. ၆ EPA ဟ်ဖျါဝဲအသိး, တၢ်ဘၣ်ခွံးဘၣ်ခွါဒီးစၢ်ပှၢ် ၂၀% န့ၣ်ဟဲလၢထံ, ဒီး ၈၀% န့ၣ်ဟဲလၢတၢ်လီၤအဂၤန့ၣ်လီၤ.

What is SPRWS doing?



- * Replacing lead services in the street
- * Educating customers
- * Providing...



- SPRWS replaces hundreds of lead services in the street each year. We have been doing this since the early 1980s and pay for half of the cost. We will replace the street half of the lead services replaced by the other half will be provided for interested customers.

ပကဘဉ်မၤတၢ်မနုၤလဲၣ်ပကတီၢ်ဖျါထီၣ်တၢ်ဂ့ၢ်အံၤလဲၣ်.

အဆိကတၢ်, ပကထူးကွံာ်စၢ်ပှ်ထံတၢ်မၤစၢၤတဖၣ် (lead water services) လၢကျဲၣ်မုၢ်အပူၤလီၤ. ကိးနံၤဒဲး, ပထူးထီၣ်ကွံာ်တဘျူးကယၢဒီးစးထီၣ်မၤအီၤလၢ ၁၉၈၀ နံၣ်လံၤလံၤလံၤန့ၣ်လီၤ. ဟံၣ်ကစၢ်မ့ၢ်ထူးထီၣ်ကွံာ်အဝဲသ့ၣ်အထံပီၤဘိလၢအကစၢ်အတၢ်ပၤအကဝီၤပူၤန့ၣ်, ပကထူးထီၣ်ကွံာ်ထံပီၤဘိလၢပတၢ်ပၤအပူၤစ့ၢ်ကိးန့ၣ်လီၤ.

ပဟ့ၣ်တၢ်သ့ၣ်ညါန့ၣ်ပၤဆူပပုၤစူးကါတၢ်မၤစၢၤတဖၣ်အအိၣ်ဘဉ်ယးဒီး စၢ်ပှ်ဒီးစၢ်ပှ်လၢအအိၣ်လၢထံအိအပူၤန့ၣ်လီၤ.

ပဟ့ၣ်လီၤကျိၣ်စ့တၢ်မၤစၢၤလၢ ပုၤ Saint Paul ဖိတဖၣ်အဂီၢ် လၢကရဲၣ်ကျဲၣ်ဆိတလဲကွံာ်အဝဲသ့ၣ်အစၢ်ပှ်တၢ်မၤစၢၤ (lead service) တဖၣ်န့ၣ်လီၤ.

What we are doing

This year, we also started providing filter pitchers to those customers who have had a partial lead replacement. We include filters that will give six months of service.



ဖဲတၢ်မၤဝံၤတၢ်တဘျီလၢ်လၢအအိၣ်ဒီးတၢ်မၤတံၢ်တံၢ် စၢ်ပုၣ်ထံတၢ်မၤစၢၤ (lead water service) လၢထံအိၣ်တၢ်လီၢ်တတီၤလၢ်လၢဆူထံအနီၣ်ထီၣ်န့ၣ်, ပဟ့ၣ်လီၤဟံၣ်ကစၢ် ဒီးနီၣ်ပုၣ်ထံဒၢ (filtering water pitcher) လၢတၢ်အုၣ်ကီၤအီၤလၢကထူးကွံာ်စၢ်ပုၣ်လၢထံအပူၤလီၤ. ပဟ့ၣ်လီၤစ့ၢ်ကိး နီၣ်ပုၣ်ထံ (filters) လၢလၢပုၣ်ၤပုၣ်ၤလၢကတူၢ်လၢယုလၢအတီၢ်ပူၤအဂီၢ်န့ၣ်လီၤ.

What you can do

□ Know if you have a lead service

You can call our engineering desk for help in determining if your home has lead service lines at 651-266-6270.



နမၤတၢ်မနုၤကသုလၢနကဟ်ပနီၣ်တၢ်လၢအဘၣ်ဒွဲးဘၣ်ဒွါတဖၣ်လဲၣ်.

အဆိကတၢ်, ယုသ့ၣ်ညါမ့ၢ်နအိၣ်ဒီး စၢ်ပှ်ထံတၢ်မၤစၢၤ (lead water service) တဖၣ်ဒါ န့ၣ်တက့ၢ်. ပမၤစၢၤနၤဒီးတၢ်အံၤသ့န့ၣ်လီၤ. ဒ်လဲၣ်ဂ့ၤ, ပတအိၣ်ဒီးတၢ်ကွဲးနီၣ်ကွဲးယါ လၢ အတဲလီၤတံၢ်ဘၣ်ယးတၢ်မနုၤအိၣ်လၢနီၢ်တဂၤအတၢ်စုလီၢ်ခိၣ်ခိၣ်အပူၤဘၣ်န့ၣ်လီၤ. လၢ တၢ်ဂ့ၢ်တနီၤအပူၤ နကလိၣ်ဘၣ်ပှၤအဂၤတဂၤဂၤယုသ့ၣ်ညါစၢၤနၤလၢ နအိၣ်ဒီးတၢ်ပိးတၢ် လီၤမနုၤလၢနနီၢ်ကစၢ်အတၢ်စုလီၢ်ခိၣ်ခိၣ်အပူၤလဲၣ်န့ၣ်လီၤ.

What you can do

Know if you have a lead service

If you have a copper service, that's great!
Your chances of having an issue with high
lead levels in your water are small!

နမ့်အိန်ဒီး တိတ်တိတ်မၤစၢၤ (copper service) ဒီတကျိၤလၢနဟံၣ်အပူၤန့ၣ်, နတၢ်ခွဲးတၢ်
ယၢ်လၢစၢၢ်ပုၣ်အပတီၢ်ကအိၣ်လၢနထံအပူၤအါဒီးအရူၤဒိၣ်လၢ နကဘၣ်မၤစၢၤလီၤအီၤန့ၣ်
လီၤ.

What you can do

- ❑ Replace your lead water service

- * The best way to reduce lead levels in your water is to replace your lead water service.
- * We can help with financing through our assessment program.

နမူနာအိတ်ဒီး စာပိုက်ထံတော်မၤစၤ (နဂီတအေနမုနမလငခန) နှိပ်, အဂ့ၤကတၢ်နကြးထူး ထီၣ်ကွံာ်အိၤန့ၣ်လီၤ. ပမၤစၢၤကျိၣ်စ့လၢတၢ်အံၤအဂီၢ်သ့ ဒီးပအၢၣ်လီၤနၤလၢပကထူးကွံာ်ပ တၢ်ဖဲနမူၢ်ထူးထီၣ်ကွံာ်နတၢ်ဆိန့ၣ်လီၤ.

What you can do

Flush your water if it has not been used for hours

If you know that your home has a lead service line, you can let your water run for 3 -5 minutes any time the water has been sitting stagnant for several hours, such as overnight.



နမ့်ယုထာလာနတထူးထိန်ကွန်နတ်မၤစၢၤဘၣ်တခီ, နပျဲယုလီၤထံ လၢ ၃-၅ မံးနံး အဂီၢ် ဖဲထံတအိၣ်လၢနကစူးကါအီၤအဂီၢ်တဘျူးနၣ်ရံၣ် ကမၤဘၣ်ဒိတ်ထူးစ့ၤလီၤစၢၢ်ပှ် အနီၣ်ဂၢ်လၢဘၣ်သ့ၣ်သ့ၣ်အအိၣ်လၢထံအပူၤန့ၣ်လီၤ.

What you can do

Use a filter pitcher or other device to remove lead

You can purchase and use a water filter pitcher certified by the NSF International for lead removal to remove lead from your water before drinking or cooking.



နယူးဒီးစူးကါ ထံပိုင်ဒါတဖန် (water filter pitcher) လာဘိုင်တင်အိုင်ကီအီလါ ဟိုင်ခိုင် ဘီမိုင်တင်ကရါကရီလာတင်ထူးကွိုင်စါပိုင် လါတင်ကထူးကွိုင်စါပိုင်လါနထံအပူတချူး န အိ မှတမ့် ဖိအိုင်အီန့ဒ်လီ.

What you can do

☐ Have your water tested for lead

If you are concerned about lead levels in your home, you can contact our water quality lab at 651-266-1635 to have a lead test conducted to determine the lead levels in your water.



We will conduct the tests and help you to interpret the results.

SPRWS ဟုခေါ်သော တစ်မူကွင်းထံလျာအကူအညီ ဖဲနမူနာတိုက်ယိုက်တိုက်ယးစားပျော်လာနထံအီအပူ
နံ့လီ။ ပကဆဲးကျိုးရဲက်ကျဲတော်အစာတဖန်ဒီးမလစာကျိုးထံစာနံ့နဒီးတော်သွန်တဖန်အံ
နံ့လီ။

What you can do

To summarize:

- * If you have a copper service, you probably have little to worry about with lead in your water.
- * If you have a lead service, replacing it is the best option.
- * If you can't replace it or don't want to, use a filter pitcher and/or flush your system to reduce lead levels.

We are always available to help if you have questions.

ထိတ်ပမောစားနာသုဖဲနအိဉ်ဒီးတၢ်သံကွၢ်တမံၤလၢ်လၢ်အခါန့ၣ်လီၤ. ပပှၤစဲၣ်နီၤလၢအမၤကွၢ်ထံအကံၢ်အစီတဖၣ်, အ့ၣ်ကွံနယၢၣ်စးဖိကဟၣ်တၢ်မၤအကျိၤအကျဲဒီးပှၤစူးကါတၢ်မၤစၢၤအပှၤမၤတၢ်ဖိတဖၣ် ကကွၢ်ကဒါက့ၤ တၢ်လၢပမၤသကိးတၢ်သ့တပူၤယီၤလၢကဟ်ဖျါတၢ်ဂ့ၢ်အံၤန့ၣ်လီၤ.

Final thoughts

We have been treating the water to reduce the possible leaching of lead into the drinking water from water service lines and lead solder since the 1990s.



SPRWS ပတ်ပျက်ထိခိုက်တိုက်ရိုက်အံ့အိတ်အနံ့တဖန်လံ့န့ၣ်လီၤ. ပကဆဲးမၤသကိးတၢ်ဒီးန့ၣ်လၢ ကမၤစ့ၤလီၤတၢ်လၢအဘၣ်အၢဒီးစၢ်ပှ်တဖန်လၢနထံအီၤအပူၤန့ၣ်လီၤ.

Final thoughts

We continue to be in compliance with all EPA and Minnesota Department of Health regulations on drinking water.

ပလူပိတ်မာထွဲ တာ်သိန်တာ်သီလာအကြားဝဲဘန်ဝဲတဖန်လာထံအီအဂီ်န့ၣ်လီၤ.

Final thoughts

Tap water is still the most:

- Economical
- Convenient
- Regulated

Source of drinking water

ထံအပီအနီးနှင့် မှန်ဒဲးတၢ်လၢ -

- အပူၤဘၣ်
- ညီဘျိဝဲ
- လူၤပိၣ်မၤထွဲတၢ်သိၣ်တၢ်သီ

ထံအီအလီၢ်အကျဲ

Final thoughts

We take pride in producing high quality drinking water to our customers and continue to do everything we can to extend the trust our customers have placed in us and in their drinking water.



ပတ်ကဖာလာပသးလာ ပထူးထိန်ထံအီအတီပတီလာအဂုဆူပပူစူးကါတမ်စာဒီးပက ဆဲးမတ်ကီးမံဒဲးလာပမအီသ့အသိးလာကမအါထိန်ပပူပူစူးကါတမ်အတ်နင်လာအ အိန်လာပပူဒီးလာအဝဲသ့အထံအီအပူန့ဉ်လီ.

Questions?

တၢ်ဂ့ၢ်တၢ်ကျိၤအိၣ်ဒီးဝဲအါမးလၢနကမၤန့ၢ်တၢ်ဂ့ၢ်ဘၣ်ယးစၢ်ပှ်လၢအ့ထၢၣ်နဲးအလီၤန့ၣ်လီၤ. နက့ၢ်သတြၢဒီးနလံာ်န့ၣ်ဆံးဖိလၢနကဒီးန့ၢ်အါထီၣ်တၢ်ဂ့ၢ်တၢ်ကျိၤအဂီၢ်သ့န့ၣ်လီၤ.

Contact Information

Water quality lab
651-266-1635

Engineering desk
651-266-6270

Customer service
651-266-6350

တၢ်မၤကွၢ်ထံအကံၢ်အစီအဒၢး (Water quality lab)

651-266-1635

စးဖိကဟံၣ်တၢ်မၤအကျိၤအကျဲအလီၢ် (Engineering desk)

651-266-6270

ပှၤပှၤစူးကိတၢ်မၤစၢၤ (Customer service)

651-266-6350