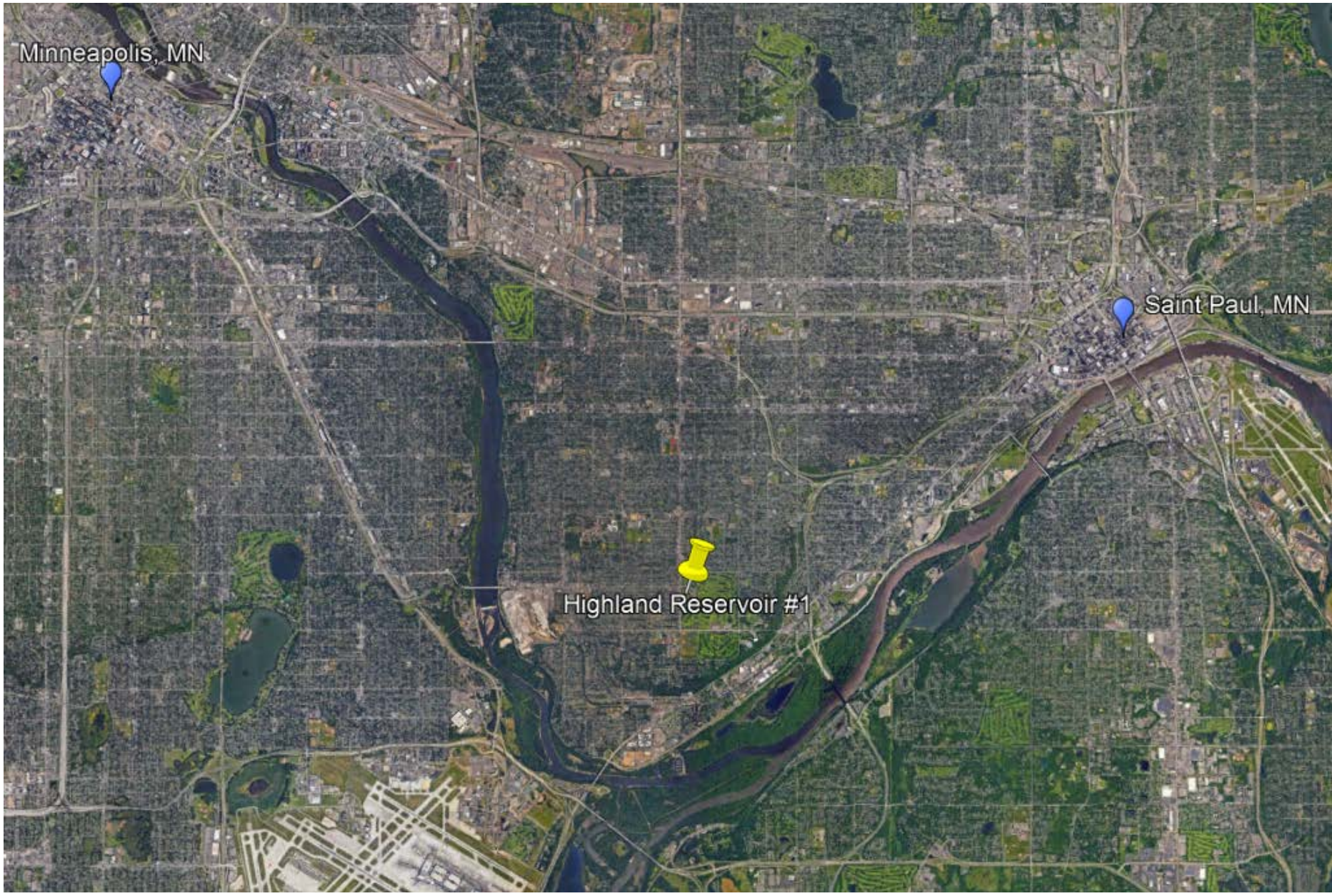
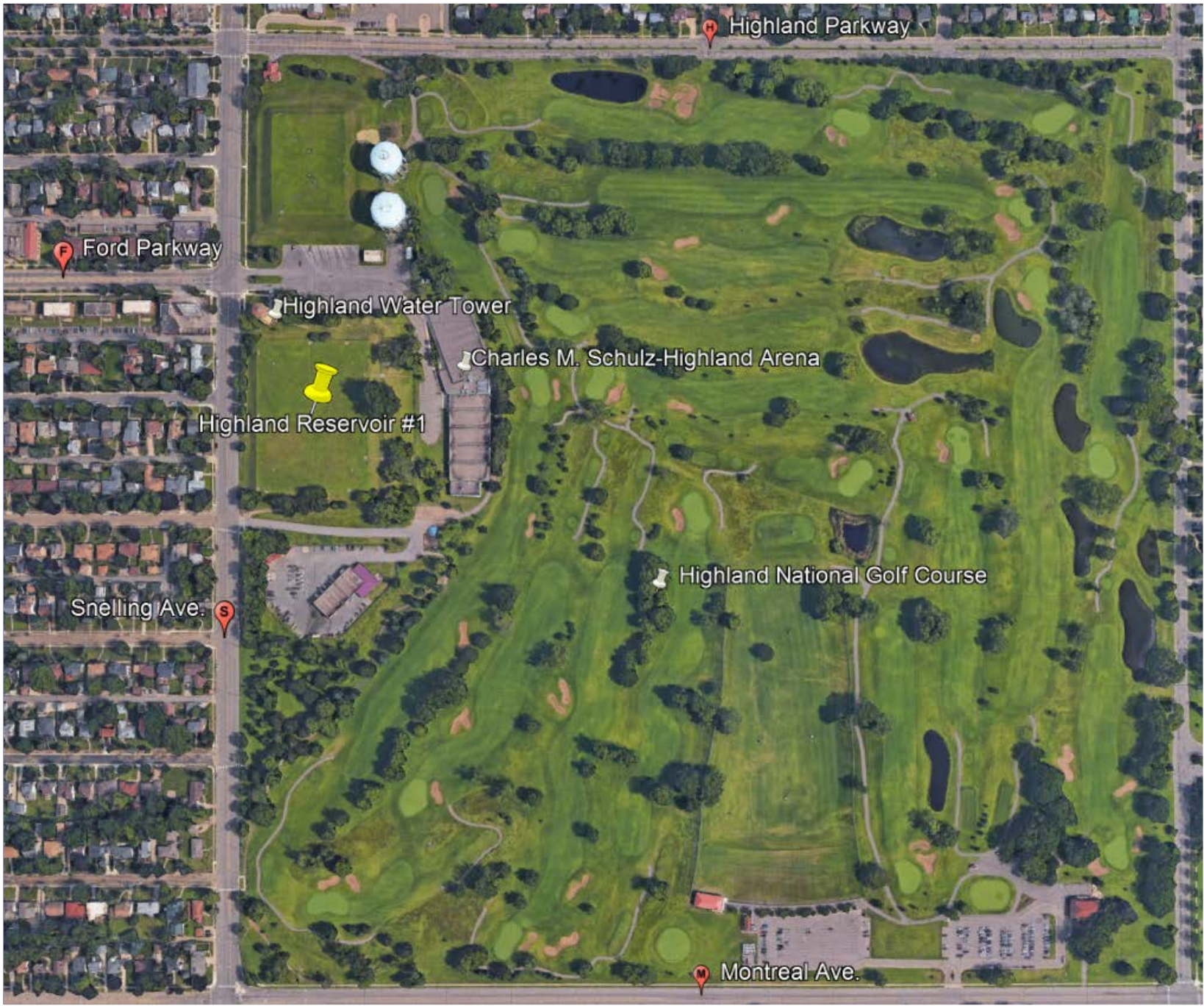


Minneapolis, MN

Saint Paul, MN

Highland Reservoir #1





Highland Parkway

Ford Parkway

Highland Water Tower


Charles M. Schulz-Highland Arena

Highland Reservoir #1

Snelling Ave.

Highland National Golf Course


Montreal Ave.

An aerial photograph of a water treatment facility. A large, rectangular area in the center is highlighted with a red border and labeled as an 'Existing 18 MG Reservoir'. To the left of the reservoir is a tall, cylindrical 'Highland Water Tower' with a red-tiled roof. To the right is a large, multi-story building with a brown roof, labeled 'Charles M.'. The facility is surrounded by green grass, trees, and a paved road on the left side.

Highland Water Tower

Existing 18 MG Reservoir

Charles M.

An aerial photograph of a campus. A large, rectangular green field is outlined with a red border. To the left of the field is a road with several cars. To the right is a large, multi-story building with a brown roof. In the upper left, there is a small, octagonal tower with a red roof. The text 'Highland Water Tower' is positioned near the tower, and 'Charles M.' is positioned near the building. The text 'Approximate Extents of Land to be Developed' is centered within the red box.

Highland Water Tower

Charles M.

Approximate Extents of
Land to be Developed